



Cattle on Feed

Released October 22, 2004, by the National Agricultural Statistics Service (NASS), Agricultural Statistics Board, U.S. Department of Agriculture. For information on *Cattle on Feed* call Mike Miller at (202) 720-3040, office hours 7:30 a.m. to 4:00 p.m. ET.

U.S. Cattle on Feed Up 3 Percent

Cattle and calves on feed for slaughter market in the United States for feedlots with capacity of 1,000 or more head totaled 10.5 million head on October 1, 2004. The inventory was 3 percent above October 1, 2003 and up slightly from October 1, 2002. The inventory included 6.46 million steers and steer calves, up 4 percent from the previous year. This group accounted for 62 percent of the total inventory. Heifers and heifer calves accounted for 3.96 million head, up 1 percent from 2003.

Placements in feedlots during September totaled 2.37 million, 4 percent below 2003 but 8 percent above 2002. Net placements were 2.31 million head. During September, placements of cattle and calves weighing less than 600 pounds were 623,000, 600-699 pounds were 474,000, 700-799 pounds were 557,000, and 800 pounds and greater were 720,000.

Marketings of fed cattle during September totaled 1.80 million, 11 percent below 2003 and 3 percent below 2002. This is the second lowest fed cattle marketings for the month of September since the series began in 1996.

Other disappearance totaled 61,000 during September, 3 percent below 2003 but 15 percent above 2002.

**Cattle on Feed: Number on Feed, Placements, Marketings, and
Other Disappearance, 1,000+ Capacity Feedlots,
United States, October 1, 2002-2004**

Item	Number			2004 as % of	
	2002	2003	2004	2002	2003
	<i>1,000 Head</i>	<i>1,000 Head</i>	<i>1,000 Head</i>	<i>Percent</i>	<i>Percent</i>
On Feed Sep 1 ¹	10,159	9,839	9,973	98	101
Placed on Feed During Sep	2,194	2,474	2,374	108	96
Fed Cattle Marketed During Sep	1,848	2,032	1,800	97	89
Other Disappearance During Sep ²	53	63	61	115	97
On Feed Oct 1 ¹	10,452	10,218	10,486	100	103

¹ Cattle and calves on feed are animals for slaughter market being fed a ration of grain or other concentrates and are expected to produce a carcass that will grade select or better.

² Includes death loss, movement from feedlots to pasture, and shipments to other feedlots for further feeding.

**Cattle on Feed: Number on Feed, Placements, Marketings, and
Other Disappearance, 1,000+ Capacity Feedlots,
United States, September 1, 2002-2004**

Item	Number			2004 as % of	
	2002	2003	2004	2002	2003
	<i>1,000 Head</i>	<i>1,000 Head</i>	<i>1,000 Head</i>	<i>Percent</i>	<i>Percent</i>
On Feed Aug 1 ¹	10,109	9,590	9,853	97	103
Placed on Feed During Aug	2,228	2,384	2,099	94	88
Fed Cattle Marketed During Aug	2,135	2,075	1,923	90	93
Other Disappearance During Aug ²	43	60	56	130	93
On Feed Sep 1 ¹	10,159	9,839	9,973	98	101

¹ Cattle and calves on feed are animals for slaughter market being fed a ration of grain or other concentrates and are expected to produce a carcass that will grade select or better.

² Includes death loss, movement from feedlots to pasture, and shipments to other feedlots for further feeding.

**Cattle on Feed: Number on Feed by Class, 1,000+ Capacity Feedlots,
United States, October 1, 2002-2004**

Item	Number			2004 as % of	
	2002	2003	2004	2002	2003
	<i>1,000 Head</i>	<i>1,000 Head</i>	<i>1,000 Head</i>	<i>Percent</i>	<i>Percent</i>
Class on Feed Oct 1					
Steers and Steer Calves	6,282	6,243	6,462	103	104
Heifers and Heifer Calves	4,096	3,911	3,964	97	101
Cows and Bulls	74	64	60	81	94

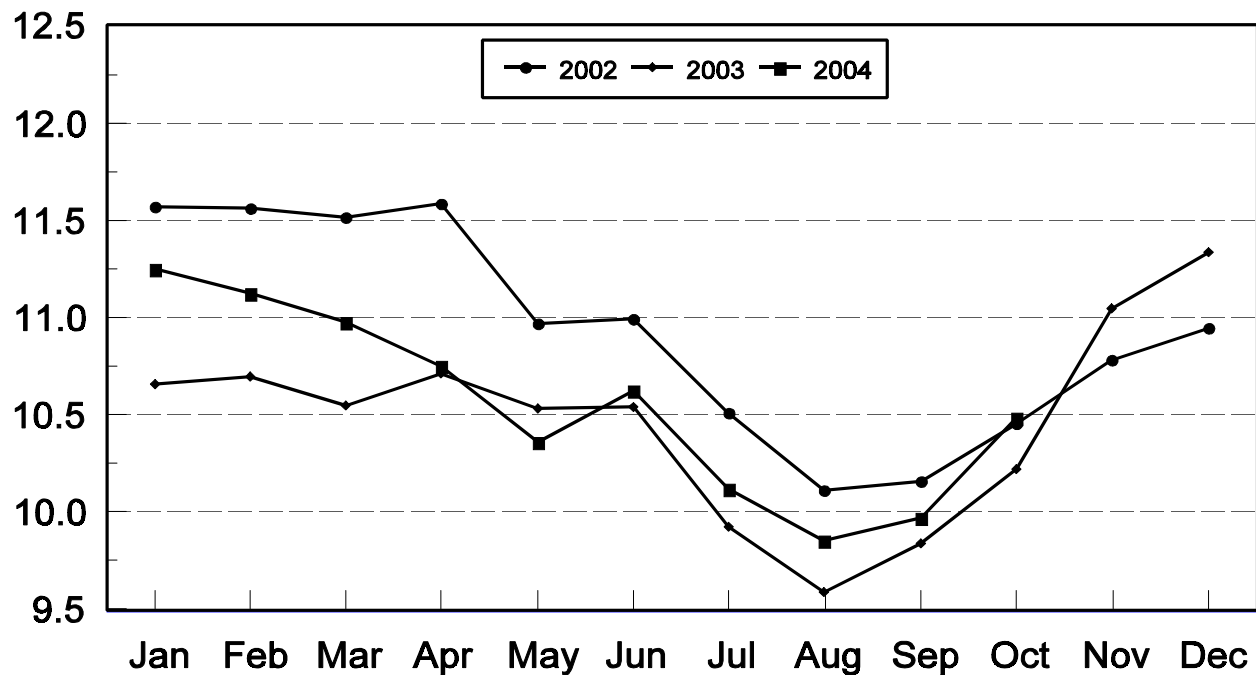
**Cattle on Feed: Number on Feed, 1,000+ Capacity Feedlots,
by Month, State, and United States 2003-2004 ¹**

State	Oct 1, 2003	Sep 1, 2004	Oct 1, 2004		
			Number	as % of 2003	as % of Sep
	<i>1,000 Head</i>	<i>1,000 Head</i>	<i>1,000 Head</i>	<i>Percent</i>	<i>Percent</i>
AZ	275	296	298	108	101
CA	485	520	520	107	100
CO	950	930	1,020	107	110
ID	270	245	275	102	112
IA	310	375	375	121	100
KS	2,300	2,130	2,220	97	104
NE	1,830	1,800	1,940	106	108
NM	123	129	125	102	97
OK	350	325	340	97	105
SD	145	138	143	99	104
TX	2,720	2,670	2,770	102	104
WA	195	160	175	90	109
Oth Sts	265	255	285	108	112
US	10,218	9,973	10,486	103	105

¹ Cattle and calves on feed are animals for slaughter market being fed a ration of grain or other concentrates and are expected to produce a carcass that will grade select or better.

United States Cattle on Feed 1,000+ Capacity Feedlots

Million Head



**Cattle on Feed: Number Placed on Feed, 1,000+ Capacity Feedlots,
by Month, State, and United States 2003-2004**

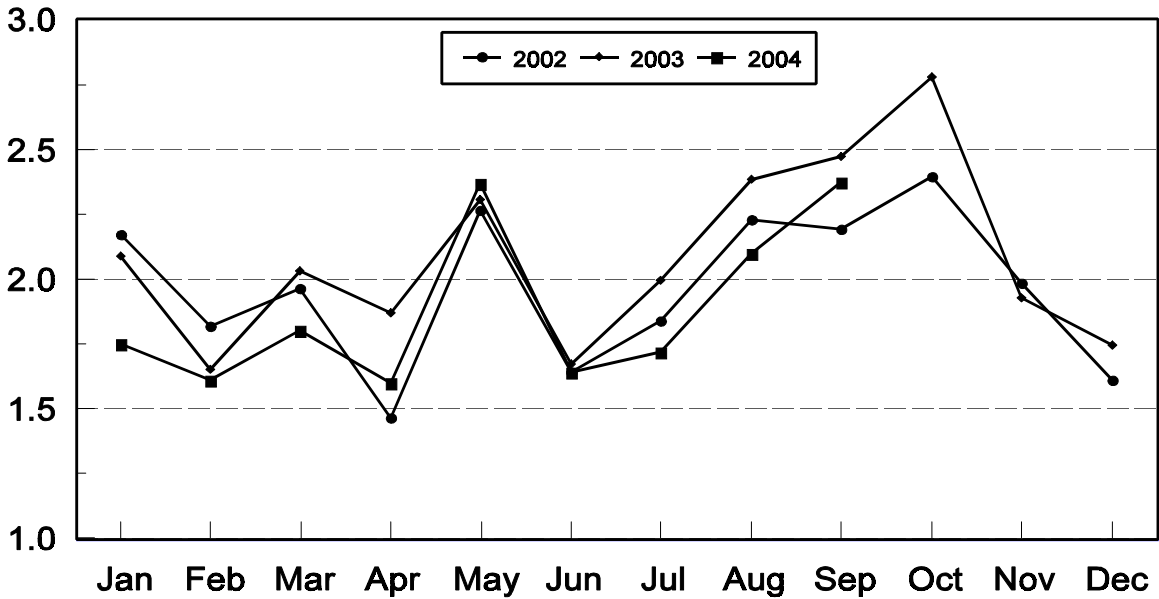
State	During Sep 2003	During Aug 2004	During Sep 2004		
			Number	as % of 2003	as % of Aug
	<i>1,000 Head</i>	<i>1,000 Head</i>	<i>1,000 Head</i>	<i>Percent</i>	<i>Percent</i>
AZ	25	30	28	112	93
CA	61	63	64	105	102
CO	255	205	275	108	134
ID	82	58	84	102	145
IA	80	62	70	88	113
KS	530	520	520	98	100
NE	520	420	470	90	112
NM	16	23	18	113	78
OK	81	76	80	99	105
SD	49	25	41	84	164
TX	620	530	600	97	113
WA	53	33	48	91	145
Oth Sts	102	54	76	75	141
US	2,474	2,099	2,374	96	113

**Cattle on Feed: Number Placed on Feed by Weight Group, 1,000+ Capacity
Feedlots, by Month, State, and United States, 2003-2004**

State	During September									
	Under 600		600-699		700-799		800 Plus		Total	
	2003	2004	2003	2004	2003	2004	2003	2004	2003	2004
	<i>1,000 Head</i>	<i>1,000 Head</i>	<i>1,000 Head</i>	<i>1,000 Head</i>	<i>1,000 Head</i>	<i>1,000 Head</i>	<i>1,000 Head</i>	<i>1,000 Head</i>	<i>1,000 Head</i>	<i>1,000 Head</i>
CO	41	30	46	50	78	65	90	130	255	275
KS	135	135	140	110	160	140	95	135	530	520
NE	102	88	95	70	127	102	196	210	520	470
TX	250	210	185	180	130	145	55	65	620	600
Oth Sts	170	160	79	64	115	105	185	180	549	509
US	698	623	545	474	610	557	621	720	2,474	2,374
State	During August									
	Under 600		600-699		700-799		800 Plus		Total	
	2003	2004	2003	2004	2003	2004	2003	2004	2003	2004
	<i>1,000 Head</i>	<i>1,000 Head</i>	<i>1,000 Head</i>	<i>1,000 Head</i>	<i>1,000 Head</i>	<i>1,000 Head</i>	<i>1,000 Head</i>	<i>1,000 Head</i>	<i>1,000 Head</i>	<i>1,000 Head</i>
CO	43	30	55	40	63	65	79	70	240	205
KS	120	115	150	100	205	180	105	125	580	520
NE	74	66	80	54	141	100	175	200	470	420
TX	220	165	170	165	150	130	70	70	610	530
Oth Sts	145	130	74	54	100	90	165	150	484	424
US	602	506	529	413	659	565	594	615	2,384	2,099

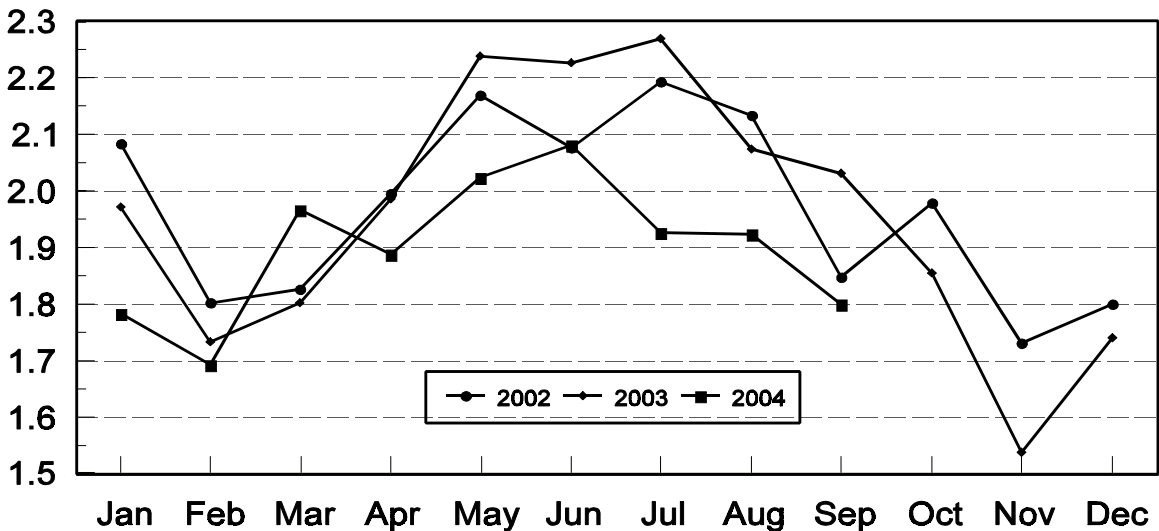
United States Cattle on Feed 1,000+ Capacity Feedlots Number Placed

Million Head



United States Cattle on Feed 1,000+ Capacity Feedlots Number Marketed

Million Head



**Cattle on Feed: Number Marketed, 1,000+ Capacity Feedlots,
by Month, State, and United States 2003-2004**

State	During Sep 2003	During Aug 2004	During Sep 2004		
			Number	as % of 2003	as % of Aug
	<i>1,000 Head</i>	<i>1,000 Head</i>	<i>1,000 Head</i>	<i>Percent</i>	<i>Percent</i>
AZ	23	26	25	109	96
CA	63	59	60	95	102
CO	200	150	180	90	120
ID	56	47	53	95	113
IA	69	66	69	100	105
KS	465	495	410	88	83
NE	345	360	320	93	89
NM	10	19	19	190	100
OK	73	64	62	85	97
SD	37	43	35	95	81
TX	580	520	490	84	94
WA	41	22	32	78	145
Oth Sts	70	52	45	64	87
US	2,032	1,923	1,800	89	94

**Cattle on Feed: Other Disappearance, 1,000+ Capacity Feedlots,
by Month, State, and United States 2003-2004 ¹**

State	During Sep 2003	During Aug 2004	During Sep 2004		
			Number	as % of 2003	as % of Aug
	<i>1,000 Head</i>	<i>1,000 Head</i>	<i>1,000 Head</i>	<i>Percent</i>	<i>Percent</i>
AZ	1	2	1	100	50
CA	3	4	4	133	100
CO	5	5	5	100	100
ID	1	1	1	100	100
IA	1	1	1	100	100
KS	15	15	20	133	133
NE	5	10	10	200	100
NM	4	2	3	75	150
OK	3	2	3	100	150
SD	1	1	1	100	100
TX	20	10	10	50	100
WA	2	1	1	50	100
Oth Sts	2	2	1	50	50
US	63	56	61	97	109

¹ Includes death loss, movement from feedlots to pasture, and shipments to other feedlots for further feeding.

**Cattle on Feed: Number on Feed by Class, 1,000+ Capacity Feedlots,
by Quarter, State, and United States, 2003-2004**

State	Steers & Steer Calves			Heifers & Heifer Calves			Cows and Bulls		
	Oct 1, 2003	Jul 1, 2004	Oct 1, 2004	Oct 1, 2003	Jul 1, 2004	Oct 1, 2004	Oct 1, 2003	Jul 1, 2004	Oct 1, 2004
	<i>1,000 Head</i>	<i>1,000 Head</i>	<i>1,000 Head</i>	<i>1,000 Head</i>	<i>1,000 Head</i>	<i>1,000 Head</i>	<i>1,000 Head</i>	<i>1,000 Head</i>	<i>1,000 Head</i>
AZ	271	292	296	4	3	2	0	0	0
CA	445	480	485	40	40	35	0	0	0
CO	580	560	605	365	375	410	5	5	5
ID	166	150	170	104	90	104	0	0	1
IA	200	260	240	109	129	134	1	1	1
KS	1,220	1,130	1,180	1,060	950	1,020	20	10	20
NE	1,010	1,100	1,110	805	740	820	15	10	10
NM	54	60	75	69	64	50	0	0	0
OK	215	205	220	131	109	118	4	1	2
SD	77	88	71	59	68	60	9	17	12
TX	1,700	1,750	1,710	1,018	1,008	1,056	2	2	4
WA	115	90	105	77	59	68	3	1	2
Oth Sts	190	205	195	70	60	87	5	5	3
US	6,243	6,370	6,462	3,911	3,695	3,964	64	52	60

Terms and Definitions of Cattle on Feed Estimates

Cattle on feed are animals being fed a ration of grain, silage, hay and/or protein supplement for slaughter market that are expected to produce a carcass that will grade select or better. It excludes cattle being "backgrounded only" for later sale as feeders or later placement in another feedlot.

Placements are cattle put into a feedlot, fed a ration which will produce a carcass that will grade select or better, and are intended for the slaughter market.

Marketings are cattle shipped out of feedlots to a slaughter market.

Other disappearance includes death loss, movement from feedlots to pasture, and shipments to other feedlots for further feeding.

Reliability of Cattle on Feed Estimates

Survey Procedures: During January and July all known feedlots in the U.S. with capacity of 1,000 or more head are surveyed to provide data for cattle on feed estimates. During the other months, all known feedlots from 17 States are surveyed. The 17 States account for 98 percent of the cattle on feed in feedlots with capacity of 1,000 or more head.

Estimating Procedures: These cattle on feed estimates were prepared by the Agricultural Statistics Board after reviewing recommendations and analysis submitted by each State office. Regional and State survey data were reviewed for reasonableness with each other and with estimates from the previous month when setting the current estimates.

Revision Policy: Revisions to previous estimates are made to improve month to month relationships. Estimates for the previous month are subject to revision in all States each month when current estimates are made. In February, all monthly estimates for the previous year, and the number of feedlots and annual marketings from two years ago are reviewed and subject to revisions. The reviews are primarily based on slaughter data, state check-off or brand data, and any other data that may have been received after the original estimate was made. Estimates will also be reviewed after data from the Census of Agriculture are available. No revisions will be made after that date and estimates become final.

Reliability: Since all 1000+ capacity cattle on feed operators in every State are not included in the monthly survey, survey estimates are subject to sampling variability. Survey results are also subject to non-sampling errors such as omissions, duplications, and mistakes in reporting, recording, and processing the data. The effects of these errors cannot be measured directly. They are minimized through rigid quality controls in the data collection process and through a careful review of all reported data for consistency and reasonableness.

ACCESS TO REPORTS!!

For your convenience, there are several ways to obtain NASS reports, data products, and services:

INTERNET ACCESS

All NASS reports are available free of charge on the worldwide Internet. For access, connect to the Internet and go to the NASS Home Page at: www.usda.gov/nass/. Select "Today's Reports" or Publications and then Reports Calendar or Publications and then Search, by Title or Subject.

E-MAIL SUBSCRIPTION

All NASS reports are available by subscription free of charge direct to your e-mail address. Starting with the NASS Home Page at www.usda.gov/nass/, click on **Publications**, then click on the **Subscribe by E-mail** button which takes you to the page describing e-mail delivery of reports. Finally, click on **Go to the Subscription Page** and follow the instructions.

PRINTED REPORTS OR DATA PRODUCTS

CALL OUR TOLL-FREE ORDER DESK: 800-999-6779 (U.S. and Canada)
Other areas, please call 703-605-6220 FAX: 703-605-6900
(Visa, MasterCard, check, or money order acceptable for payment.)

ASSISTANCE

For **assistance** with general agricultural statistics or further information about NASS or its products or services, contact the **Agricultural Statistics Hotline** at **800-727-9540**, 7:30 a.m. to 4:00 p.m. ET, or e-mail: nass@nass.usda.gov.

The United States Department of Agriculture (USDA) prohibits discrimination in all its programs on the basis of race, color, national origin, gender, religion, age, disability, political beliefs, sexual orientation, and marital or family status. (Not all prohibited bases apply to all programs.) Persons with disabilities who require alternative means for communication of program information (braille, large print, audiotape, etc.) should contact the USDA's TARGET Center at 202-720-2600 (voice and TDD).

To file a complaint of discrimination, write USDA, Director, Office of Civil Rights, Room 326-W, Whitten Building, 1400 Independence Avenue, SW, Washington, D.C., 20250-9410, or call 202-720-5964 (voice or TDD). USDA is an equal opportunity provider and employer.