



Cattle on Feed

Released December 17, 2004, by the National Agricultural Statistics Service (NASS), Agricultural Statistics Board, U.S. Department of Agriculture. For information on *Cattle on Feed* call Mike Miller at (202) 720-3040, office hours 7:30 a.m. to 4:00 p.m. ET.

U.S. Cattle on Feed Up Slightly

Cattle and calves on feed for slaughter market in the United States for feedlots with capacity of 1,000 or more head totaled 11.3 million head on December 1, 2004. The inventory was slightly above December 1, 2003 and 4 percent above December 1, 2002.

Placements in feedlots during November totaled 1.74 million, 10 percent below 2003 and 12 percent below 2002. This is the lowest placements for the month of November since the series began in 1996. Net placements were 1.64 million. During November, placements of cattle and calves weighing less than 600 pounds were 590,000, 600-699 pounds were 557,000, 700-799 pounds were 326,000, and 800 pounds and greater were 270,000.

Marketings of fed cattle during November totaled 1.63 million, 6 percent above 2003 but 6 percent below 2002. This is the second lowest fed cattle marketings for the month of November since the series began in 1996.

Other disappearance totaled 108,000 during November, 11 percent above 2003 and 20 percent above 2002.

**Cattle on Feed: Number on Feed, Placements, Marketings, and
Other Disappearance, 1,000+ Capacity Feedlots,
United States, December 1, 2002-2004**

Item	Number			2004 as % of	
	2002	2003	2004	2002	2003
	<i>1,000 Head</i>	<i>1,000 Head</i>	<i>1,000 Head</i>	<i>Percent</i>	<i>Percent</i>
On Feed Nov 1 ¹	10,785	11,043	11,334	105	103
Placed on Feed During Nov	1,982	1,926	1,743	88	90
Fed Cattle Marketed During Nov	1,731	1,537	1,625	94	106
Other Disappearance During Nov ²	90	97	108	120	111
On Feed Dec 1 ¹	10,946	11,335	11,344	104	100

¹ Cattle and calves on feed are animals for slaughter market being fed a ration of grain or other concentrates and are expected to produce a carcass that will grade select or better.

² Includes death loss, movement from feedlots to pasture, and shipments to other feedlots for further feeding.

**Cattle on Feed: Number on Feed, Placements, Marketings, and
Other Disappearance, 1,000+ Capacity Feedlots,
United States, November 1, 2002-2004**

Item	Number			2004 as % of	
	2002	2003	2004	2002	2003
	<i>1,000 Head</i>	<i>1,000 Head</i>	<i>1,000 Head</i>	<i>Percent</i>	<i>Percent</i>
On Feed Oct 1 ¹	10,452	10,218	10,497	100	103
Placed on Feed During Oct	2,396	2,781	2,701	113	97
Fed Cattle Marketed During Oct	1,979	1,855	1,798	91	97
Other Disappearance During Oct ²	84	101	66	79	65
On Feed Nov 1 ¹	10,785	11,043	11,334	105	103

¹ Cattle and calves on feed are animals for slaughter market being fed a ration of grain or other concentrates and are expected to produce a carcass that will grade select or better.

² Includes death loss, movement from feedlots to pasture, and shipments to other feedlots for further feeding.

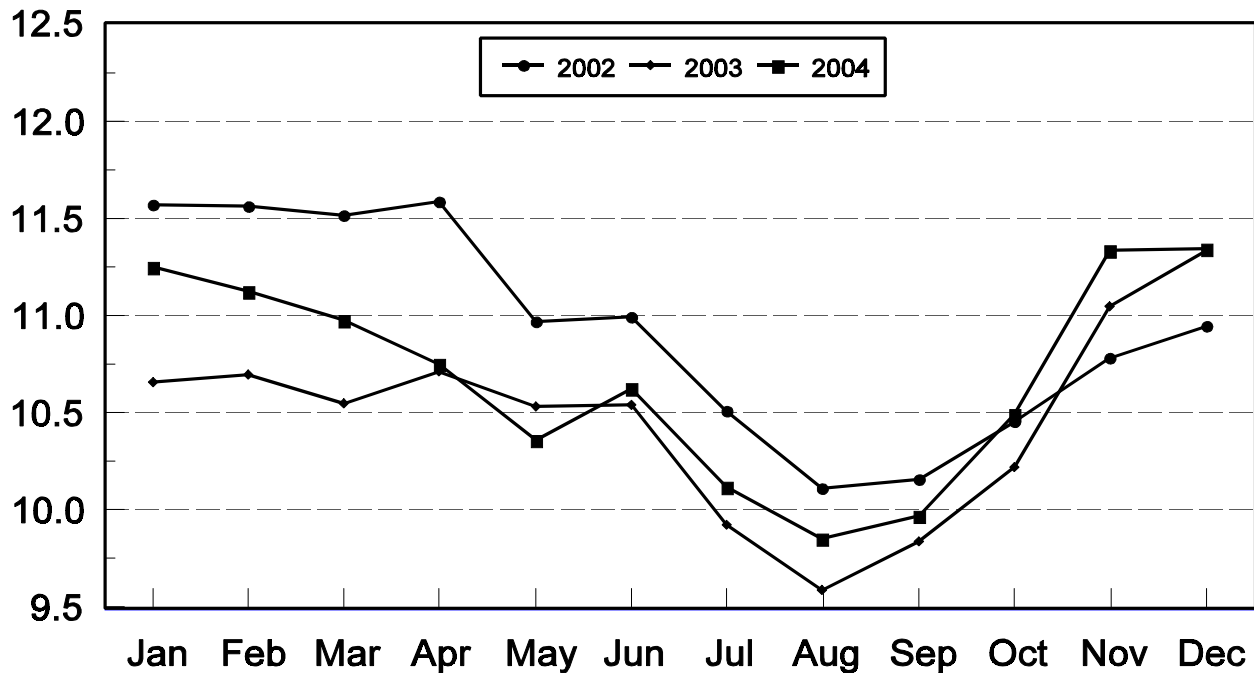
**Cattle on Feed: Number on Feed, 1,000+ Capacity Feedlots,
by Month, State, and United States 2003-2004 ¹**

State	Dec 1, 2003	Nov 1, 2004	Dec 1, 2004		
			Number	as % of 2003	as % of Nov
	<i>1,000 Head</i>	<i>1,000 Head</i>	<i>1,000 Head</i>	<i>Percent</i>	<i>Percent</i>
AZ	284	321	329	116	102
CA	500	525	530	106	101
CO	1,060	1,090	1,100	104	101
ID	310	305	305	98	100
IA	370	430	435	118	101
KS	2,480	2,400	2,390	96	100
NE	2,280	2,210	2,300	101	104
NM	121	134	129	107	96
OK	350	360	355	101	99
SD	200	169	186	93	110
TX	2,840	2,880	2,740	96	95
WA	210	180	185	88	103
Oth Sts	330	330	360	109	109
US	11,335	11,334	11,344	100	100

¹ Cattle and calves on feed are animals for slaughter market being fed a ration of grain or other concentrates and are expected to produce a carcass that will grade select or better.

United States Cattle on Feed 1,000+ Capacity Feedlots

Million Head



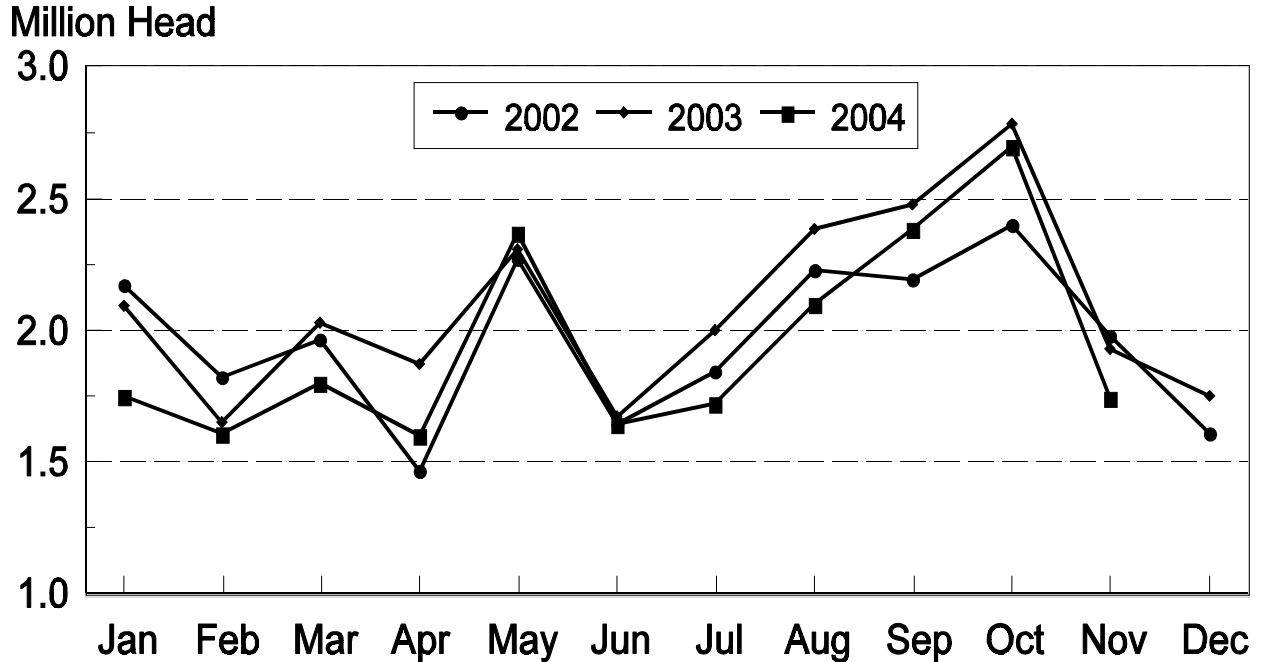
**Cattle on Feed: Number Placed on Feed, 1,000+ Capacity Feedlots,
by Month, State, and United States 2003-2004**

State	During Nov 2003	During Oct 2004	During Nov 2004		
			Number	as % of 2003	as % of Oct
	<i>1,000 Head</i>	<i>1,000 Head</i>	<i>1,000 Head</i>	<i>Percent</i>	<i>Percent</i>
AZ	26	48	35	135	73
CA	62	70	66	106	94
CO	185	260	175	95	67
ID	64	78	50	78	64
IA	77	125	90	117	72
KS	425	570	390	92	68
NE	410	600	410	100	68
NM	22	29	14	64	48
OK	56	87	43	77	49
SD	54	65	51	94	78
TX	440	650	320	73	49
WA	46	43	37	80	86
Oth Sts	59	76	62	105	82
US	1,926	2,701	1,743	90	65

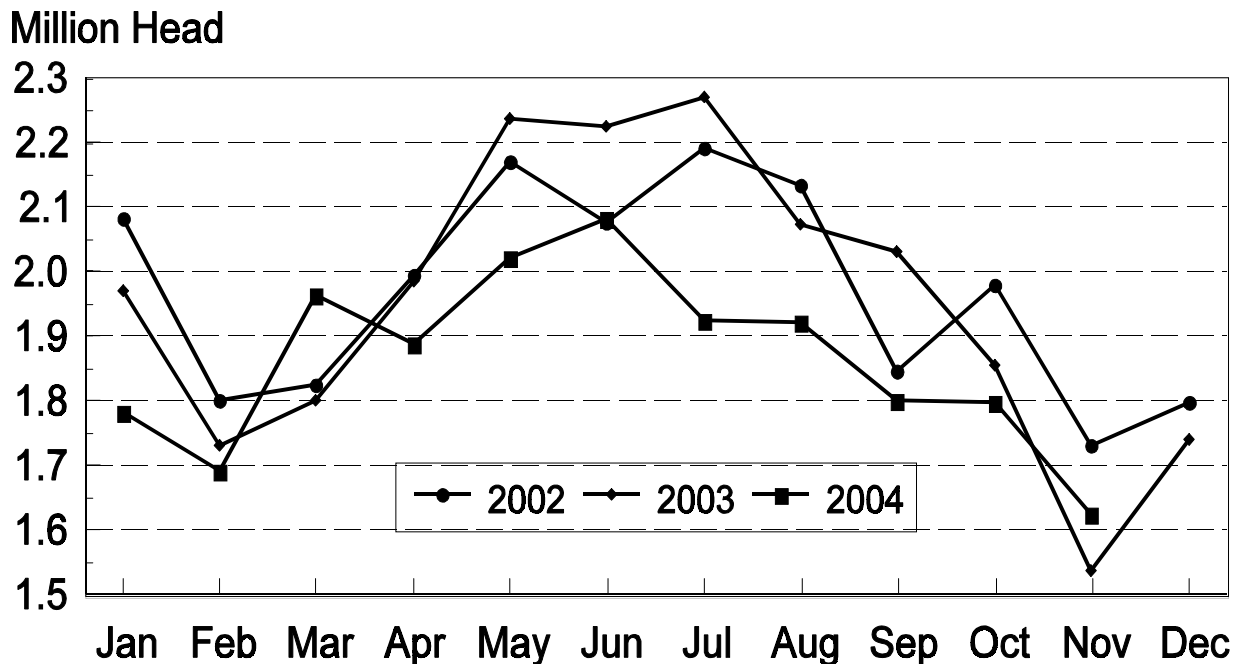
**Cattle on Feed: Number Placed on Feed by Weight Group, 1,000+ Capacity
Feedlots, by Month, State, and United States, 2003-2004**

State	During November									
	Under 600		600-699		700-799		800 Plus		Total	
	2003	2004	2003	2004	2003	2004	2003	2004	2003	2004
	<i>1,000 Head</i>	<i>1,000 Head</i>	<i>1,000 Head</i>	<i>1,000 Head</i>	<i>1,000 Head</i>	<i>1,000 Head</i>	<i>1,000 Head</i>	<i>1,000 Head</i>	<i>1,000 Head</i>	<i>1,000 Head</i>
CO	72	60	45	55	40	35	28	25	185	175
KS	130	115	130	125	110	90	55	60	425	390
NE	128	115	138	157	63	66	81	72	410	410
TX	155	115	150	105	100	70	35	30	440	320
Oth Sts	195	185	115	115	66	65	90	83	466	448
US	680	590	578	557	379	326	289	270	1,926	1,743
	During October									
	Under 600		600-699		700-799		800 Plus		Total	
	2003	2004	2003	2004	2003	2004	2003	2004	2003	2004
	<i>1,000 Head</i>	<i>1,000 Head</i>	<i>1,000 Head</i>	<i>1,000 Head</i>	<i>1,000 Head</i>	<i>1,000 Head</i>	<i>1,000 Head</i>	<i>1,000 Head</i>	<i>1,000 Head</i>	<i>1,000 Head</i>
CO	88	85	69	65	54	50	59	60	270	260
KS	185	175	170	165	130	130	85	100	570	570
NE	245	187	187	189	88	103	120	121	640	600
TX	250	215	235	200	145	155	50	80	680	650
Oth Sts	255	250	135	145	91	91	140	135	621	621
US	1,023	912	796	764	508	529	454	496	2,781	2,701

United States Cattle on Feed 1,000+ Capacity Feedlots Number Placed



United States Cattle on Feed 1,000+ Capacity Feedlots Number Marketed



**Cattle on Feed: Number Marketed, 1,000+ Capacity Feedlots,
by Month, State, and United States 2003-2004**

State	During Nov 2003	During Oct 2004	During Nov 2004		
			Number	as % of 2003	as % of Oct
	<i>1,000 Head</i>	<i>1,000 Head</i>	<i>1,000 Head</i>	<i>Percent</i>	<i>Percent</i>
AZ	19	21	23	121	110
CA	52	59	53	102	90
CO	165	185	155	94	84
ID	47	47	48	102	102
IA	56	68	82	146	121
KS	350	375	370	106	99
NE	260	325	310	119	95
NM	17	29	16	94	55
OK	51	64	44	86	69
SD	30	38	33	110	87
TX	410	520	430	105	83
WA	35	37	31	89	84
Oth Sts	45	30	30	67	100
US	1,537	1,798	1,625	106	90

**Cattle on Feed: Other Disappearance, 1,000+ Capacity Feedlots,
by Month, State, and United States 2003-2004 ¹**

State	During Nov 2003	During Oct 2004	During Nov 2004		
			Number	as % of 2003	as % of Oct
	<i>1,000 Head</i>	<i>1,000 Head</i>	<i>1,000 Head</i>	<i>Percent</i>	<i>Percent</i>
AZ	1	4	4	400	100
CA	5	6	8	160	133
CO	10	5	10	100	200
ID	2	1	2	100	200
IA	1	2	3	300	150
KS	25	15	30	120	200
NE	10	5	10	100	200
NM	2	2	3	150	150
OK	5	3	4	80	133
SD	1	1	1	100	100
TX	30	20	30	100	150
WA	1	1	1	100	100
Oth Sts	4	1	2	50	200
US	97	66	108	111	164

¹ Includes death loss, movement from feedlots to pasture, and shipments to other feedlots for further feeding.

Terms and Definitions of Cattle on Feed Estimates

Cattle on feed are animals being fed a ration of grain, silage, hay and/or protein supplement for slaughter market that are expected to produce a carcass that will grade select or better. It excludes cattle being "backgrounded only" for later sale as feeders or later placement in another feedlot.

Placements are cattle put into a feedlot, fed a ration which will produce a carcass that will grade select or better, and are intended for the slaughter market.

Marketings are cattle shipped out of feedlots to a slaughter market.

Other disappearance includes death loss, movement from feedlots to pasture, and shipments to other feedlots for further feeding.

Reliability of Cattle on Feed Estimates

Survey Procedures: During January and July all known feedlots in the U.S. with capacity of 1,000 or more head are surveyed to provide data for cattle on feed estimates. During the other months, all known feedlots from 17 States are surveyed. The 17 States account for 98 percent of the cattle on feed in feedlots with capacity of 1,000 or more head.

Estimating Procedures: These cattle on feed estimates were prepared by the Agricultural Statistics Board after reviewing recommendations and analysis submitted by each State office. Regional and State survey data were reviewed for reasonableness with each other and with estimates from the previous month when setting the current estimates.

Revision Policy: Revisions to previous estimates are made to improve month to month relationships. Estimates for the previous month are subject to revision in all States each month when current estimates are made. In February, all monthly estimates for the previous year, and the number of feedlots and annual marketings from two years ago are reviewed and subject to revisions. The reviews are primarily based on slaughter data, state check-off or brand data, and any other data that may have been received after the original estimate was made. Estimates will also be reviewed after data from the Census of Agriculture are available. No revisions will be made after that date and estimates become final.

Reliability: Since all 1000+ capacity cattle on feed operators in every State are not included in the monthly survey, survey estimates are subject to sampling variability. Survey results are also subject to non-sampling errors such as omissions, duplications, and mistakes in reporting, recording, and processing the data. The effects of these errors cannot be measured directly. They are minimized through rigid quality controls in the data collection process and through a careful review of all reported data for consistency and reasonableness.

ACCESS TO REPORTS!!

For your convenience, there are several ways to obtain NASS reports, data products, and services:

INTERNET ACCESS

All NASS reports are available free of charge on the worldwide Internet. For access, connect to the Internet and go to the NASS Home Page at: www.usda.gov/nass/. Select "Today's Reports" or Publications and then Reports Calendar or Publications and then Search, by Title or Subject.

E-MAIL SUBSCRIPTION

All NASS reports are available by subscription free of charge direct to your e-mail address. Starting with the NASS Home Page at www.usda.gov/nass/, click on **Publications**, then click on the **Subscribe by E-mail** button which takes you to the page describing e-mail delivery of reports. Finally, click on **Go to the Subscription Page** and follow the instructions.

PRINTED REPORTS OR DATA PRODUCTS

CALL OUR TOLL-FREE ORDER DESK: 800-999-6779 (U.S. and Canada)
Other areas, please call 703-605-6220 FAX: 703-605-6900
(Visa, MasterCard, check, or money order acceptable for payment.)

ASSISTANCE

For **assistance** with general agricultural statistics or further information about NASS or its products or services, contact the **Agricultural Statistics Hotline** at **800-727-9540**, 7:30 a.m. to 4:00 p.m. ET, or e-mail: nass@nass.usda.gov.

The United States Department of Agriculture (USDA) prohibits discrimination in all its programs on the basis of race, color, national origin, gender, religion, age, disability, political beliefs, sexual orientation, and marital or family status. (Not all prohibited bases apply to all programs.) Persons with disabilities who require alternative means for communication of program information (braille, large print, audiotape, etc.) should contact the USDA's TARGET Center at 202-720-2600 (voice and TDD).

To file a complaint of discrimination, write USDA, Director, Office of Civil Rights, Room 326-W, Whitten Building, 1400 Independence Avenue, SW, Washington, D.C., 20250-9410, or call 202-720-5964 (voice or TDD). USDA is an equal opportunity provider and employer.