



Cattle on Feed

Released January 21, 2005, by the National Agricultural Statistics Service (NASS), Agricultural Statistics Board, U.S. Department of Agriculture. For information on *Cattle on Feed* call Mike Miller at (202) 720-3040, office hours 7:30 a.m. to 4:00 p.m. ET.

U.S. Cattle on Feed Up Slightly

Cattle and calves on feed for slaughter market in the United States for feedlots with capacity of 1,000 or more head totaled 11.3 million head on January 1, 2005. The inventory was slightly above January 1, 2004 and 6 percent above January 1, 2003. The inventory included 7.19 million steers and steer calves, up 5 percent from the previous year. This group accounted for 64 percent of the total inventory. Heifers and heifer calves accounted for 4.05 million head, down 7 percent from January 1, 2004.

Placements in feedlots during December totaled 1.83 million, 5 percent above 2003 and 14 percent above 2002. This is the highest placements for the month of December since the series began in 1996. Net placements were 1.74 million. During December, placements of cattle and calves weighing less than 600 pounds were 465,000, 600-699 pounds were 558,000, 700-799 pounds were 489,000, and 800 pounds and greater were 322,000.

Marketings of fed cattle during December totaled 1.78 million, 2 percent above 2003 but 1 percent below 2002.

Other disappearance totaled 92,000 during December, 2 percent above 2003 but 7 percent below 2002.

**Cattle on Feed: Number on Feed, Placements, Marketings, and
Other Disappearance, 1,000+ Capacity Feedlots,
United States, January 1, 2003-2005**

Item	Number			2005 as % of	
	2003	2004	2005	2003	2004
	<i>1,000 Head</i>	<i>1,000 Head</i>	<i>1,000 Head</i>	<i>Percent</i>	<i>Percent</i>
On Feed Dec 1 ^{1 2}	10,946	11,335	11,344	104	100
Placed on Feed During Dec ²	1,610	1,748	1,834	114	105
Fed Cattle Marketed During Dec ²	1,799	1,740	1,777	99	102
Other Disappearance During Dec ^{2 3}	99	90	92	93	102
On Feed Jan 1 ¹	10,658	11,253	11,309	106	100

¹ Cattle and calves on feed are animals for slaughter market being fed a ration of grain or other concentrates and are expected to produce a carcass that will grade select or better.

² December preceding year.

³ Includes death loss, movement from feedlots to pasture, and shipments to other feedlots for further feeding.

**Cattle on Feed: Number on Feed, Placements, Marketings, and
Other Disappearance, 1,000+ Capacity Feedlots,
United States, December 1, 2002-2004**

Item	Number			2004 as % of	
	2002	2003	2004	2002	2003
	<i>1,000 Head</i>	<i>1,000 Head</i>	<i>1,000 Head</i>	<i>Percent</i>	<i>Percent</i>
On Feed Nov 1 ¹	10,785	11,043	11,334	105	103
Placed on Feed During Nov	1,982	1,926	1,743	88	90
Fed Cattle Marketed During Nov	1,731	1,537	1,625	94	106
Other Disappearance During Nov ²	90	97	108	120	111
On Feed Dec 1 ¹	10,946	11,335	11,344	104	100

¹ Cattle and calves on feed are animals for slaughter market being fed a ration of grain or other concentrates and are expected to produce a carcass that will grade select or better.

² Includes death loss, movement from feedlots to pasture, and shipments to other feedlots for further feeding.

**Cattle on Feed: Number on Feed by Class, 1,000+ Capacity Feedlots,
United States, January 1, 2003-2005**

Item	Number			2005 as % of	
	2003	2004	2005	2003	2004
	<i>1,000 Head</i>	<i>1,000 Head</i>	<i>1,000 Head</i>	<i>Percent</i>	<i>Percent</i>
Class on Feed Jan 1					
Steers and Steer Calves	6,580	6,845	7,185	109	105
Heifers and Heifer Calves	3,999	4,330	4,046	101	93
Cows and Bulls	79	78	78	99	100

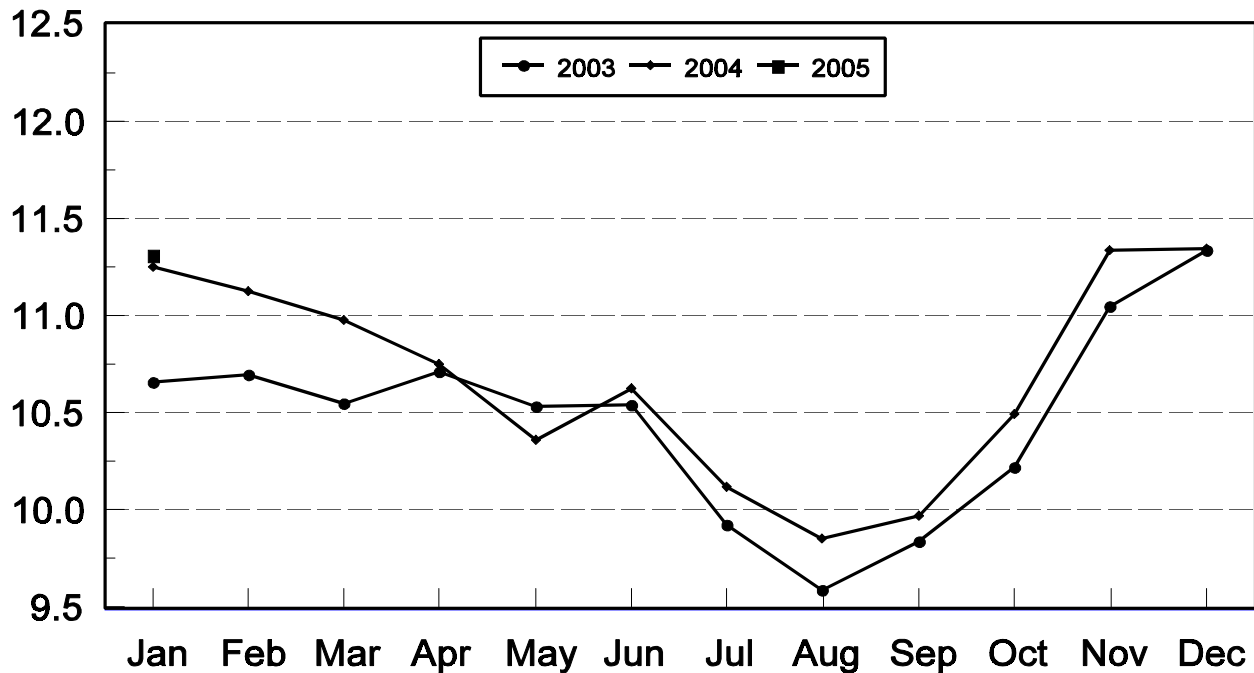
**Cattle on Feed: Number on Feed, 1,000+ Capacity Feedlots,
by Month, State, and United States 2004-2005 ¹**

State	Jan 1, 2004	Dec 1, 2004	Jan 1, 2005		
			Number	as % of 2004	as % of Dec
	<i>1,000 Head</i>	<i>1,000 Head</i>	<i>1,000 Head</i>	<i>Percent</i>	<i>Percent</i>
AZ	293	329	331	113	101
CA	510	530	535	105	101
CO	1,040	1,100	1,080	104	98
ID	300	305	295	98	97
IA	370	435	450	122	103
KS	2,430	2,390	2,410	99	101
NE	2,280	2,300	2,300	101	100
NM	115	129	126	110	98
OK	355	355	350	99	99
SD	200	186	192	96	103
TX	2,830	2,740	2,700	95	99
WA	200	185	190	95	103
Oth Sts	330	360	350	106	97
US	11,253	11,344	11,309	100	100

¹ Cattle and calves on feed are animals for slaughter market being fed a ration of grain or other concentrates and are expected to produce a carcass that will grade select or better.

United States Cattle on Feed 1,000+ Capacity Feedlots

Million Head



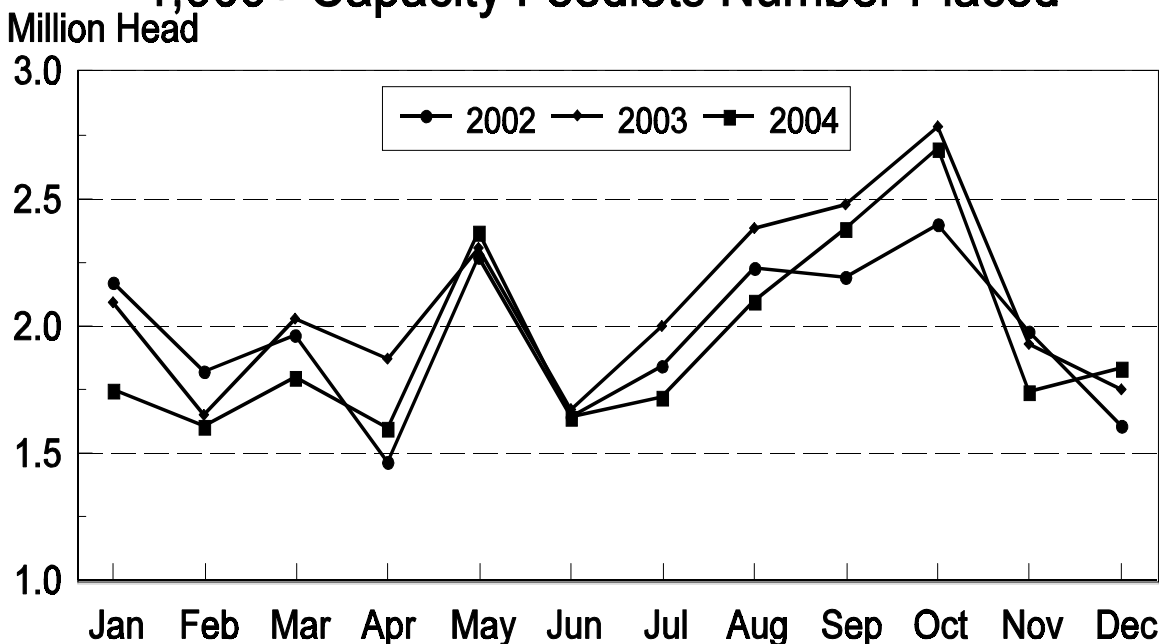
**Cattle on Feed: Number Placed on Feed, 1,000+ Capacity Feedlots,
by Month, State, and United States 2003-2004**

State	During Dec 2003	During Nov 2004	During Dec 2004		
			Number	as % of 2003	as % of Nov
	<i>1,000 Head</i>	<i>1,000 Head</i>	<i>1,000 Head</i>	<i>Percent</i>	<i>Percent</i>
AZ	32	35	33	103	94
CA	70	66	72	103	109
CO	180	175	135	75	77
ID	53	50	55	104	110
IA	50	90	71	142	79
KS	410	390	490	120	126
NE	350	410	390	111	95
NM	14	14	14	100	100
OK	53	43	53	100	123
SD	31	51	42	135	82
TX	420	320	405	96	127
WA	30	37	39	130	105
Oth Sts	55	62	35	64	56
US	1,748	1,743	1,834	105	105

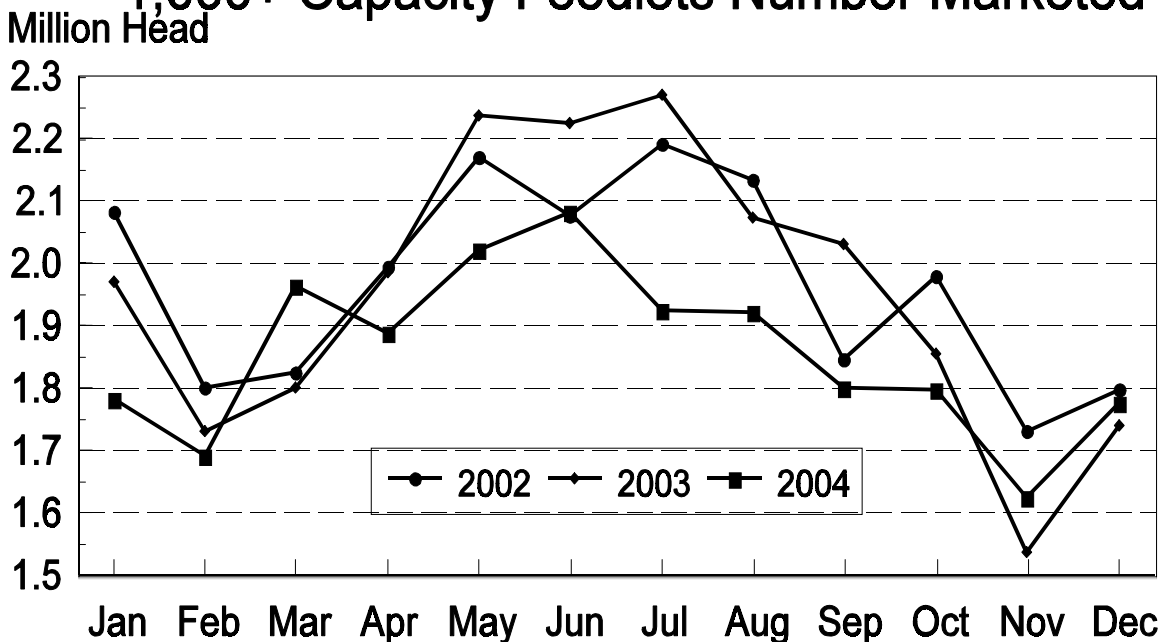
**Cattle on Feed: Number Placed on Feed by Weight Group, 1,000+ Capacity
Feedlots, by Month, State, and United States, 2003-2004**

State	During December									
	Under 600		600-699		700-799		800 Plus		Total	
	2003	2004	2003	2004	2003	2004	2003	2004	2003	2004
	<i>1,000 Head</i>	<i>1,000 Head</i>	<i>1,000 Head</i>	<i>1,000 Head</i>	<i>1,000 Head</i>	<i>1,000 Head</i>	<i>1,000 Head</i>	<i>1,000 Head</i>	<i>1,000 Head</i>	<i>1,000 Head</i>
CO	45	25	50	40	60	45	25	25	180	135
KS	95	100	155	175	110	135	50	80	410	490
NE	68	60	104	117	100	114	78	99	350	390
TX	150	130	140	135	100	110	30	30	420	405
Oth Sts	145	150	80	91	78	85	85	88	388	414
US	503	465	529	558	448	489	268	322	1,748	1,834
	During November									
	Under 600		600-699		700-799		800 Plus		Total	
	2003	2004	2003	2004	2003	2004	2003	2004	2003	2004
	<i>1,000 Head</i>	<i>1,000 Head</i>	<i>1,000 Head</i>	<i>1,000 Head</i>	<i>1,000 Head</i>	<i>1,000 Head</i>	<i>1,000 Head</i>	<i>1,000 Head</i>	<i>1,000 Head</i>	<i>1,000 Head</i>
CO	72	60	45	55	40	35	28	25	185	175
KS	130	115	130	125	110	90	55	60	425	390
NE	128	115	138	157	63	66	81	72	410	410
TX	155	115	150	105	100	70	35	30	440	320
Oth Sts	195	185	115	115	66	65	90	83	466	448
US	680	590	578	557	379	326	289	270	1,926	1,743

United States Cattle on Feed 1,000+ Capacity Feedlots Number Placed



United States Cattle on Feed 1,000+ Capacity Feedlots Number Marketed



**Cattle on Feed: Number Marketed, 1,000+ Capacity Feedlots,
by Month, State, and United States 2003-2004**

State	During Dec 2003	During Nov 2004	During Dec 2004		
			Number	as % of 2003	as % of Nov
	<i>1,000 Head</i>	<i>1,000 Head</i>	<i>1,000 Head</i>	<i>Percent</i>	<i>Percent</i>
AZ	22	23	30	136	130
CA	55	53	62	113	117
CO	190	155	145	76	94
ID	60	48	62	103	129
IA	48	82	55	115	67
KS	435	370	450	103	122
NE	340	310	380	112	123
NM	17	16	15	88	94
OK	45	44	52	116	118
SD	30	33	34	113	103
TX	410	430	420	102	98
WA	38	31	32	84	103
Oth Sts	50	30	40	80	133
US	1,740	1,625	1,777	102	109

**Cattle on Feed: Other Disappearance, 1,000+ Capacity Feedlots,
by Month, State, and United States 2003-2004 ¹**

State	During Dec 2003	During Nov 2004	During Dec 2004		
			Number	as % of 2003	as % of Nov
	<i>1,000 Head</i>	<i>1,000 Head</i>	<i>1,000 Head</i>	<i>Percent</i>	<i>Percent</i>
AZ	1	4	1	100	25
CA	5	8	5	100	63
CO	10	10	10	100	100
ID	3	2	3	100	150
IA	2	3	1	50	33
KS	25	30	20	80	67
NE	10	10	10	100	100
NM	3	3	2	67	67
OK	3	4	6	200	150
SD	1	1	2	200	200
TX	20	30	25	125	83
WA	2	1	2	100	200
Oth Sts	5	2	5	100	250
US	90	108	92	102	85

¹ Includes death loss, movement from feedlots to pasture, and shipments to other feedlots for further feeding.

**Cattle on Feed: Number on Feed by Class, 1,000+ Capacity Feedlots,
by Quarter, State, and United States, 2004-2005**

State	Steers & Steer Calves			Heifers & Heifer Calves			Cows and Bulls		
	Jan 1, 2004	Oct 1, 2004	Jan 1, 2005	Jan 1, 2004	Oct 1, 2004	Jan 1, 2005	Jan 1, 2004	Oct 1, 2004	Jan 1, 2005
	<i>1,000 Head</i>	<i>1,000 Head</i>	<i>1,000 Head</i>	<i>1,000 Head</i>	<i>1,000 Head</i>	<i>1,000 Head</i>	<i>1,000 Head</i>	<i>1,000 Head</i>	<i>1,000 Head</i>
AZ	289	296	323	4	2	7	0	0	1
CA	470	485	495	40	35	40	0	0	0
CO	625	605	665	410	410	410	5	5	5
ID	191	170	184	108	104	111	1	1	0
IA	250	240	305	119	134	144	1	1	1
KS	1,270	1,180	1,310	1,150	1,020	1,080	10	20	20
NE	1,310	1,110	1,390	940	820	890	30	10	20
NM	50	*78	80	65	*58	46	0	0	0
OK	200	220	225	155	118	125	0	2	0
SD	110	71	98	74	60	74	16	12	20
TX	1,720	1,710	1,750	1,107	1,056	947	3	4	3
WA	125	105	110	73	68	79	2	2	1
Oth Sts	235	195	250	85	87	93	10	3	7
US	6,845	*6,465	7,185	4,330	*3,972	4,046	78	60	78

* Revised.

Terms and Definitions of Cattle on Feed Estimates

Cattle on feed are animals being fed a ration of grain, silage, hay and/or protein supplement for slaughter market that are expected to produce a carcass that will grade select or better. It excludes cattle being "backgrounded only" for later sale as feeders or later placement in another feedlot.

Placements are cattle put into a feedlot, fed a ration which will produce a carcass that will grade select or better, and are intended for the slaughter market.

Marketings are cattle shipped out of feedlots to a slaughter market.

Other disappearance includes death loss, movement from feedlots to pasture, and shipments to other feedlots for further feeding.

Reliability of Cattle on Feed Estimates

Survey Procedures: During January and July all known feedlots in the U.S. with capacity of 1,000 or more head are surveyed to provide data for cattle on feed estimates. During the other months, all known feedlots from 17 States are surveyed. The 17 States account for 98 percent of the cattle on feed in feedlots with capacity of 1,000 or more head.

Estimating Procedures: These cattle on feed estimates were prepared by the Agricultural Statistics Board after reviewing recommendations and analysis submitted by each State office. Regional and State survey data were reviewed for reasonableness with each other and with estimates from the previous month when setting the current estimates.

Revision Policy: Revisions to previous estimates are made to improve month to month relationships. Estimates for the previous month are subject to revision in all States each month when current estimates are made. In February, all monthly estimates for the previous year, and the number of feedlots and annual marketings from two years ago are reviewed and subject to revisions. The reviews are primarily based on slaughter data, state check-off or brand data, and any other data that may have been received after the original estimate was made. Estimates will also be reviewed after data from the Census of Agriculture are available. No revisions will be made after that date and estimates become final.

Reliability: Since all 1000+ capacity cattle on feed operators in every State are not included in the monthly survey, survey estimates are subject to sampling variability. Survey results are also subject to non-sampling errors such as omissions, duplications, and mistakes in reporting, recording, and processing the data. The effects of these errors cannot be measured directly. They are minimized through rigid quality controls in the data collection process and through a careful review of all reported data for consistency and reasonableness.

ACCESS TO REPORTS!!

For your convenience, there are several ways to obtain NASS reports, data products, and services:

INTERNET ACCESS

All NASS reports are available free of charge on the worldwide Internet. For access, connect to the Internet and go to the NASS Home Page at: www.usda.gov/nass/. Select "Today's Reports" or Publications and then Reports Calendar or Publications and then Search, by Title or Subject.

E-MAIL SUBSCRIPTION

All NASS reports are available by subscription free of charge direct to your e-mail address. Starting with the NASS Home Page at www.usda.gov/nass/, click on **Publications**, then click on the **Subscribe by E-mail** button which takes you to the page describing e-mail delivery of reports. Finally, click on **Go to the Subscription Page** and follow the instructions.

PRINTED REPORTS OR DATA PRODUCTS

CALL OUR TOLL-FREE ORDER DESK: 800-999-6779 (U.S. and Canada)
Other areas, please call 703-605-6220 FAX: 703-605-6900
(Visa, MasterCard, check, or money order acceptable for payment.)

ASSISTANCE

For **assistance** with general agricultural statistics or further information about NASS or its products or services, contact the **Agricultural Statistics Hotline** at **800-727-9540**, 7:30 a.m. to 4:00 p.m. ET, or e-mail: nass@nass.usda.gov.

The United States Department of Agriculture (USDA) prohibits discrimination in all its programs on the basis of race, color, national origin, gender, religion, age, disability, political beliefs, sexual orientation, and marital or family status. (Not all prohibited bases apply to all programs.) Persons with disabilities who require alternative means for communication of program information (braille, large print, audiotape, etc.) should contact the USDA's TARGET Center at 202-720-2600 (voice and TDD).

To file a complaint of discrimination, write USDA, Director, Office of Civil Rights, Room 326-W, Whitten Building, 1400 Independence Avenue, SW, Washington, D.C., 20250-9410, or call 202-720-5964 (voice or TDD). USDA is an equal opportunity provider and employer.