



Cattle On Feed

Released February 18, 2005, by the National Agricultural Statistics Service (NASS), Agricultural Statistics Board, U.S. Department of Agriculture. For information on *Cattle on Feed* call Mike Miller at (202) 720-3040, office hours 7:30 a.m. to 4:00 p.m. ET.

U.S. Cattle on Feed Up 2 Percent

Cattle and calves on feed for slaughter market in the United States for feedlots with capacity of 1,000 or more head totaled 11.3 million head on February 1, 2005. The inventory was 2 percent above February 1, 2004 and 6 percent above February 1, 2003.

Placements in feedlots during January totaled 1.89 million, 7 percent above 2004 but 10 percent below 2003. Net placements were 1.81 million. During January, placements of cattle and calves weighing less than 600 pounds were 380,000, 600-699 pounds were 458,000, 700-799 pounds were 628,000, and 800 pounds and greater were 419,000.

Marketings of fed cattle during January totaled 1.78 million, up slightly from 2004 but down 10 percent from 2003.

Other disappearance totaled 74,000 during January, 21 percent below 2004 and 1 percent below 2003.

2004 Cattle on Feed and Annual Size Group Estimates

This report contains the 2004 monthly cattle on feed estimates for feedlots with capacity of 1,000 or more head. Also included are the number of feedlots, inventory, and annual marketings by size group for 2003 and 2004. Data for total U.S. capacity of 1,000 or more head feedlots are also published in this issue. These data are measured by the number of head.

Cattle and calves on feed for slaughter market in the United States for feedlots with capacity of 1,000 or more head represented 82.2 percent of all cattle and calves on feed in the United States on January 1, 2005, up from 81.5 percent on January 1, 2004.

Marketings of fed cattle for feedlots with capacity of 1,000 or more head during 2004 represented 85.3 percent all cattle marketed from feedlots in the United States, up from 85.1 percent during 2003.

**Cattle on Feed: Number on Feed, Placements, Marketings, and
Other Disappearance, 1,000+ Capacity Feedlots,
United States, February 1, 2003-2005**

Item	Number			2005 as % of	
	2003	2004	2005	2003	2004
	<i>1,000 Head</i>	<i>1,000 Head</i>	<i>1,000 Head</i>	<i>Percent</i>	<i>Percent</i>
On Feed Jan 1 ¹	10,658	11,253	*11,299	106	100
Placed on Feed During Jan	2,089	*1,754	1,885	90	107
Fed Cattle Marketed During Jan	1,972	*1,775	1,776	90	100
Other Disappearance During Jan ²	75	94	74	99	79
On Feed Feb 1 ¹	10,700	*11,138	11,334	106	102

* Revised.

¹ Cattle and calves on feed are animals for slaughter market being fed a ration of grain or other concentrates and are expected to produce a carcass that will grade select or better.

² Includes death loss, movement from feedlots to pasture, and shipments to other feedlots for further feeding.

**Cattle on Feed: Number on Feed, Placements, Marketings, and
Other Disappearance, 1,000+ Capacity Feedlots,
United States, January 1, 2003-2005**

Item	Number			2005 as % of	
	2003	2004	2005	2003	2004
	<i>1,000 Head</i>	<i>1,000 Head</i>	<i>1,000 Head</i>	<i>Percent</i>	<i>Percent</i>
On Feed Dec 1 ^{1 2}	10,946	11,335	*11,334	104	100
Placed on Feed During Dec ²	1,610	1,748	1,834	114	105
Fed Cattle Marketed During Dec ²	1,799	1,740	1,777	99	102
Other Disappearance During Dec ³	99	90	92	93	102
On Feed Jan 1 ¹	10,658	11,253	*11,299	106	100

* Revised.

¹ Cattle and calves on feed are animals for slaughter market being fed a ration of grain or other concentrates and are expected to produce a carcass that will grade select or better.

² December preceding year.

³ Includes death loss, movement from feedlots to pasture, and shipments to other feedlots for further feeding.

**Cattle on Feed: Number on Feed by Class, 1,000+ Capacity Feedlots,
United States, January 1, 2003-2005**

Item	Number			2005 as % of	
	2003	2004	2005	2003	2004
	<i>1,000 Head</i>	<i>1,000 Head</i>	<i>1,000 Head</i>	<i>Percent</i>	<i>Percent</i>
Class on Feed Jan 1					
Steers and Steer Calves	6,580	6,845	*7,175	109	105
Heifers and Heifer Calves	3,999	4,330	4,046	101	93
Cows and Bulls	79	78	78	99	100

* Revised.

**Cattle on Feed: Number on Feed, 1,000+ Capacity Feedlots,
by Month, State, and United States 2004-2005 ¹**

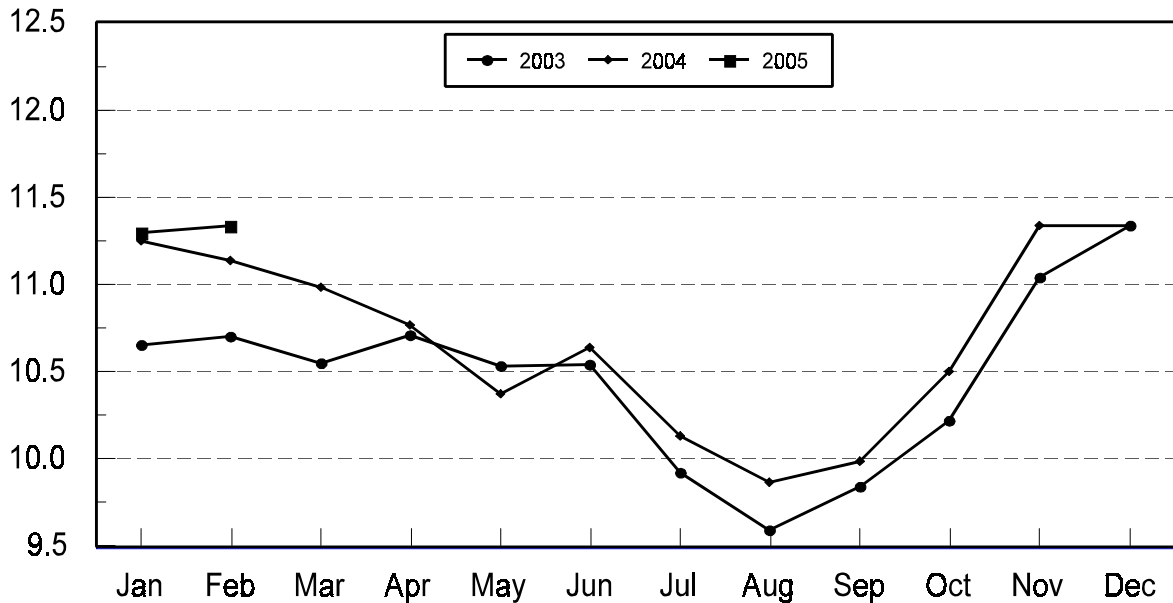
State	Feb 1, 2004	Jan 1, 2005	Feb 1, 2005		
			Number	as % of 2004	as % of Jan
	<i>1,000 Head</i>	<i>1,000 Head</i>	<i>1,000 Head</i>	<i>Percent</i>	<i>Percent</i>
AZ	296	331	325	110	98
CA	500	535	525	105	98
CO	1,040	1,080	1,060	102	98
ID	275	295	265	96	90
IA	385	450	465	121	103
KS	2,420	2,410	2,420	100	100
NE	2,280	2,300	2,350	103	102
NM	117	126	129	110	102
OK	350	350	350	100	100
SD	200	192	205	103	107
TX	2,770	2,700	2,720	98	101
WA	*195	190	190	97	100
Oth Sts	310	*340	330	106	97
US	*11,138	*11,299	11,334	102	100

* Revised.

¹ Cattle and calves on feed are animals for slaughter market being fed a ration of grain or other concentrates and are expected to produce a carcass that will grade select or better.

**United States Cattle on Feed
1,000+ Capacity Feedlots**

Million Head



**Cattle on Feed: Number Placed on Feed, 1,000+ Capacity Feedlots,
by Month, State, and United States 2004-2005**

State	During Jan 2004	During Dec 2004	During Jan 2005		
			Number	as % of 2004	as % of Dec
	<i>1,000 Head</i>	<i>1,000 Head</i>	<i>1,000 Head</i>	<i>Percent</i>	<i>Percent</i>
AZ	32	33	27	84	82
CA	55	72	59	107	82
CO	165	135	175	106	130
ID	41	55	37	90	67
IA	64	71	77	120	108
KS	455	490	475	104	97
NE	380	390	425	112	109
NM	17	14	18	106	129
OK	50	53	55	110	104
SD	30	42	41	137	98
TX	390	405	425	109	105
WA	*29	39	30	103	77
Oth Sts	46	35	41	89	117
US	*1,754	1,834	1,885	107	103

* Revised

**Cattle on Feed: Number Placed on Feed by Weight Group, 1,000+ Capacity
Feedlots, by Month, State, and United States, 2003-2005**

State	During January									
	Under 600		600-699		700-799		800 Plus		Total	
	2004	2005	2004	2005	2004	2005	2004	2005	2004	2005
	<i>1,000 Head</i>	<i>1,000 Head</i>	<i>1,000 Head</i>	<i>1,000 Head</i>	<i>1,000 Head</i>	<i>1,000 Head</i>	<i>1,000 Head</i>	<i>1,000 Head</i>	<i>1,000 Head</i>	<i>1,000 Head</i>
CO	25	25	45	45	61	70	34	35	165	175
KS	60	65	140	135	175	170	80	105	455	475
NE	47	50	95	93	140	153	98	129	380	425
TX	110	120	120	110	115	145	45	50	390	425
Oth Sts	125	120	66	75	*88	90	85	100	*364	385
US	367	380	466	458	*579	628	342	419	*1,754	1,885
	During December									
	Under 600		600-699		700-799		800 Plus		Total	
	2003	2004	2003	2004	2003	2004	2003	2004	2003	2004
	<i>1,000 Head</i>	<i>1,000 Head</i>	<i>1,000 Head</i>	<i>1,000 Head</i>	<i>1,000 Head</i>	<i>1,000 Head</i>	<i>1,000 Head</i>	<i>1,000 Head</i>	<i>1,000 Head</i>	<i>1,000 Head</i>
CO	45	25	50	40	60	45	25	25	180	135
KS	95	100	155	175	110	135	50	80	410	490
NE	68	60	104	117	100	114	78	99	350	390
TX	150	130	140	135	100	110	30	30	420	405
Oth Sts	145	150	80	91	78	85	85	88	388	414
US	503	465	529	558	448	489	268	322	1,748	1,834

* Revised.

**Cattle on Feed: Number Marketed, 1,000+ Capacity Feedlots,
by Month, State, and United States 2004-2005**

State	During Jan 2004	During Dec 2004	During Jan 2005		
			Number	as % of 2004	as % of Dec
	<i>1,000 Head</i>	<i>1,000 Head</i>	<i>1,000 Head</i>	<i>Percent</i>	<i>Percent</i>
AZ	26	30	30	115	100
CA	60	62	63	105	102
CO	160	145	185	116	128
ID	64	62	66	103	106
IA	47	55	60	128	109
KS	440	450	450	102	100
NE	360	380	360	100	95
NM	13	15	13	100	87
OK	53	52	52	98	100
SD	29	34	26	90	76
TX	430	420	395	92	94
WA	*33	32	29	88	91
Oth Sts	60	40	47	78	118
US	*1,775	1,777	1,776	100	100

* Revised.

**Cattle on Feed: Other Disappearance, 1,000+ Capacity Feedlots,
by Month, State, and United States 2004-2005¹**

State	During Jan 2004	During Dec 2004	During Jan 2005		
			Number	as % of 2004	as % of Dec
	<i>1,000 Head</i>	<i>1,000 Head</i>	<i>1,000 Head</i>	<i>Percent</i>	<i>Percent</i>
AZ	3	1	3	100	300
CA	5	5	6	120	120
CO	5	10	10	200	100
ID	2	3	1	50	33
IA	2	1	2	100	200
KS	25	20	15	60	75
NE	20	10	15	75	150
NM	2	2	2	100	100
OK	2	6	3	150	50
SD	1	2	2	200	100
TX	20	25	10	50	40
WA	1	2	1	100	50
Oth Sts	6	5	4	67	80
US	94	92	74	79	80

¹ Includes death loss, movement from feedlots to pasture, and shipments to other feedlots for further feeding.

**Cattle on Feed: Number on Feed, 1,000+ Capacity Feedlots,
by Month, State, and United States, 2004¹**

State	Jan 1	Feb 1	Mar 1	Apr 1	May 1	Jun 1
	<i>1,000 Head</i>	<i>1,000 Head</i>	<i>1,000 Head</i>	<i>1,000 Head</i>	<i>1,000 Head</i>	<i>1,000 Head</i>
AZ	293	296	295	293	295	294
CA	510	500	500	495	500	520
CO	1,040	1,040	1,020	970	940	1,010
ID	300	275	265	255	250	255
IA	370	385	405	415	415	400
KS	2,430	2,420	2,390	2,360	2,240	2,250
NE	2,280	2,280	2,270	2,210	2,100	2,010
NM	115	117	112	105	105	118
OK	355	350	335	330	310	330
SD	200	200	210	205	200	188
TX	2,830	2,770	2,690	2,640	2,560	2,810
WA	200	*195	*185	*185	*175	*170
Oth Sts	330	310	310	300	285	285
US	11,253	*11,138	*10,987	*10,763	*10,375	*10,640
	Jul 1	Aug 1	Sep 1	Oct 1	Nov 1	Dec 1
	<i>1,000 Head</i>	<i>1,000 Head</i>	<i>1,000 Head</i>	<i>1,000 Head</i>	<i>1,000 Head</i>	<i>1,000 Head</i>
AZ	295	294	296	298	321	329
CA	520	520	520	520	525	530
CO	940	880	930	1,020	1,090	1,100
ID	240	235	245	275	305	305
IA	390	380	375	375	430	435
KS	2,090	2,120	2,130	2,220	2,400	2,390
NE	1,850	1,750	1,800	1,940	2,210	2,300
NM	124	127	129	136	134	129
OK	315	315	325	340	360	355
SD	173	157	138	143	169	186
TX	2,760	2,670	2,670	2,770	2,880	2,740
WA	*165	*165	*175	*180	*185	185
Oth Sts	270	255	255	285	*325	*350
US	*10,132	*9,868	*9,988	*10,502	11,334	*11,334

* Revised.

¹ Cattle and calves on feed are animals for slaughter market being fed a ration of grain or other concentrates and are expected to produce a carcass that will grade select or better.

**Cattle on Feed: Number Placed on Feed, 1,000+ Capacity Feedlots,
by Month, State, and United States, 2003-2004**

State	During					
	Dec	Jan	Feb	Mar	Apr	May
	<i>1,000 Head</i>	<i>1,000 Head</i>	<i>1,000 Head</i>	<i>1,000 Head</i>	<i>1,000 Head</i>	<i>1,000 Head</i>
AZ	32	32	27	33	31	29
CA	70	55	56	70	75	91
CO	180	165	155	150	150	270
ID	53	41	43	39	45	74
IA	50	64	61	69	57	50
KS	410	455	390	460	355	495
NE	350	380	350	295	320	390
NM	14	17	16	16	14	27
OK	53	50	47	74	51	92
SD	31	30	43	33	26	28
TX	420	390	350	490	415	740
WA	30	*29	*26	*35	*26	*38
Oth Sts	55	46	48	46	35	46
US	1,748	*1,754	*1,612	*1,810	*1,600	*2,370
	During					
	Jun	Jul	Aug	Sep	Oct	Nov
	<i>1,000 Head</i>	<i>1,000 Head</i>	<i>1,000 Head</i>	<i>1,000 Head</i>	<i>1,000 Head</i>	<i>1,000 Head</i>
AZ	31	32	30	28	48	35
CA	69	65	63	64	70	66
CO	145	*145	205	*265	260	175
ID	47	43	58	84	78	50
IA	50	52	62	70	125	90
KS	400	520	520	520	570	390
NE	285	310	420	470	600	410
NM	26	22	23	29	29	14
OK	52	61	76	80	87	43
SD	20	12	25	41	65	51
TX	455	395	530	600	650	320
WA	*37	*33	*36	48	43	37
Oth Sts	30	29	54	76	76	62
US	*1,647	*1,719	*2,102	*2,375	2,701	1,743

* Revised.

**Cattle on Feed: Number Placed on Feed by Weight Group, 1,000+ Capacity
Feedlots, by Month, State, and United States, 2003-2004**

State	During December				
	Under 600	600-699	700-799	800 Plus	Total
	<i>1,000 Head</i>	<i>1,000 Head</i>	<i>1,000 Head</i>	<i>1,000 Head</i>	<i>1,000 Head</i>
CO	45	50	60	25	180
KS	95	155	110	50	410
NE	68	104	100	78	350
TX	150	140	100	30	420
Oth Sts	145	80	78	85	388
US	503	529	448	268	1,748
	During January				
	Under 600	600-699	700-799	800 Plus	Total
	<i>1,000 Head</i>	<i>1,000 Head</i>	<i>1,000 Head</i>	<i>1,000 Head</i>	<i>1,000 Head</i>
CO	25	45	61	34	165
KS	60	140	175	80	455
NE	47	95	140	98	380
TX	110	120	115	45	390
Oth Sts	125	66	*88	85	*364
US	367	466	*579	342	*1,754
	During February				
	Under 600	600-699	700-799	800 Plus	Total
	<i>1,000 Head</i>	<i>1,000 Head</i>	<i>1,000 Head</i>	<i>1,000 Head</i>	<i>1,000 Head</i>
CO	13	38	58	46	155
KS	55	85	150	100	390
NE	51	63	125	111	350
TX	85	100	125	40	350
Oth Sts	115	65	90	*97	*367
US	319	351	548	*394	*1,612

See footnote(s) at end of table.

--continued

**Cattle on Feed: Number Placed on Feed by Weight Group, 1,000+ Capacity
Feedlots, by Month, State, and United States, 2003-2004 (continued)**

State	During March				
	Under 600	600-699	700-799	800 Plus	Total
	<i>1,000 Head</i>	<i>1,000 Head</i>	<i>1,000 Head</i>	<i>1,000 Head</i>	<i>1,000 Head</i>
CO	15	30	60	45	150
KS	55	95	195	115	460
NE	32	47	106	110	295
TX	120	120	180	70	490
Oth Sts	125	*55	*105	130	*415
US	347	*347	*646	470	*1,810
	During April				
	Under 600	600-699	700-799	800 Plus	Total
	<i>1,000 Head</i>	<i>1,000 Head</i>	<i>1,000 Head</i>	<i>1,000 Head</i>	<i>1,000 Head</i>
CO	15	37	61	37	150
KS	45	60	140	110	355
NE	50	52	105	113	320
TX	85	100	175	55	415
Oth Sts	120	*55	85	100	*360
US	315	*304	566	415	*1,600
	During May				
	Under 600	600-699	700-799	800 Plus	Total
	<i>1,000 Head</i>	<i>1,000 Head</i>	<i>1,000 Head</i>	<i>1,000 Head</i>	<i>1,000 Head</i>
CO	46	73	103	48	270
KS	65	95	195	140	495
NE	54	60	134	142	390
TX	190	185	225	140	740
Oth Sts	140	*80	115	140	*475
US	495	*493	772	610	*2,370

See footnote(s) at end of table.

--continued

**Cattle on Feed: Number Placed on Feed by Weight Group, 1,000+ Capacity
Feedlots, by Month, State, and United States, 2003-2004 (continued)**

State	During June				
	Under 600	600-699	700-799	800 Plus	Total
	<i>1,000 Head</i>	<i>1,000 Head</i>	<i>1,000 Head</i>	<i>1,000 Head</i>	<i>1,000 Head</i>
CO	30	40	45	30	145
KS	95	100	120	85	400
NE	55	47	73	110	285
TX	150	115	140	50	455
Oth Sts	130	*57	75	100	*362
US	460	*359	453	375	*1,647
	During July				
	Under 600	600-699	700-799	800 Plus	Total
	<i>1,000 Head</i>	<i>1,000 Head</i>	<i>1,000 Head</i>	<i>1,000 Head</i>	<i>1,000 Head</i>
CO	30	30	50	*35	*145
KS	90	105	190	135	520
NE	40	55	84	131	310
TX	155	90	100	50	395
Oth Sts	*130	*44	75	100	*349
US	*445	*324	499	*451	*1,719
	During August				
	Under 600	600-699	700-799	800 Plus	Total
	<i>1,000 Head</i>	<i>1,000 Head</i>	<i>1,000 Head</i>	<i>1,000 Head</i>	<i>1,000 Head</i>
CO	30	40	65	70	205
KS	115	100	180	125	520
NE	66	54	100	200	420
TX	165	165	130	70	530
Oth Sts	130	*57	90	150	*427
US	506	*416	565	615	*2,102

See footnote(s) at end of table.

--continued

**Cattle on Feed: Number Placed on Feed by Weight Group, 1,000+ Capacity
Feedlots, by Month, State, and United States, 2003-2004 (continued)**

State	During September				
	Under 600	600-699	700-799	800 Plus	Total
	<i>1,000 Head</i>	<i>1,000 Head</i>	<i>1,000 Head</i>	<i>1,000 Head</i>	<i>1,000 Head</i>
CO	30	50	*60	*125	*265
KS	135	110	140	135	520
NE	88	70	102	210	470
TX	210	180	145	65	600
Oth Sts	165	65	105	185	520
US	628	475	*552	*720	*2,375
	During October				
	Under 600	600-699	700-799	800 Plus	Total
	<i>1,000 Head</i>	<i>1,000 Head</i>	<i>1,000 Head</i>	<i>1,000 Head</i>	<i>1,000 Head</i>
CO	85	65	50	60	260
KS	175	165	130	100	570
NE	187	189	103	121	600
TX	215	200	155	80	650
Oth Sts	250	145	91	135	621
US	912	764	529	496	2,701
	During November				
	Under 600	600-699	700-799	800 Plus	Total
	<i>1,000 Head</i>	<i>1,000 Head</i>	<i>1,000 Head</i>	<i>1,000 Head</i>	<i>1,000 Head</i>
CO	60	55	35	25	175
KS	115	125	90	60	390
NE	115	157	66	72	410
TX	115	105	70	30	320
Oth Sts	185	115	65	83	448
US	590	557	326	270	1,743

* Revised.

**Cattle on Feed: Number on Feed by Class, 1,000+ Capacity Feedlots,
by Quarter, State, and United States, 2004**

State	Steers & Steer Calves				Heifers & Heifer Calves			
	Jan 1	Apr 1	Jul 1	Oct 1	Jan 1	Apr 1	Jul 1	Oct 1
	<i>1,000 Head</i>	<i>1,000 Head</i>	<i>1,000 Head</i>	<i>1,000 Head</i>	<i>1,000 Head</i>	<i>1,000 Head</i>	<i>1,000 Head</i>	<i>1,000 Head</i>
AZ	289	289	292	296	4	4	3	2
CA	470	465	480	485	40	30	40	35
CO	625	575	560	605	410	390	375	410
ID	191	160	150	170	108	95	90	104
IA	250	260	260	240	119	154	129	134
KS	1,270	1,230	1,130	1,180	1,150	1,110	950	1,020
NE	1,310	1,300	1,100	1,110	940	890	740	820
NM	50	49	60	78	65	56	64	58
OK	200	200	205	220	155	129	109	118
SD	110	112	88	71	74	81	68	60
TX	1,720	1,670	1,750	1,710	1,107	967	1,008	1,056
WA	125	*115	*99	*108	73	*70	*65	*70
Oth Sts	235	205	205	195	85	90	60	87
US	6,845	*6,630	*6,379	*6,468	4,330	*4,066	*3,701	*3,974
Cows and Bulls								
	Jan 1	Apr 1	Jul 1	Oct 1				
	<i>1,000 Head</i>	<i>1,000 Head</i>	<i>1,000 Head</i>	<i>1,000 Head</i>				
AZ	0	0	0	0				
CA	0	0	0	0				
CO	5	5	5	5				
ID	1	0	0	0				
IA	1	1	1	1				
KS	10	20	10	20				
NE	30	20	10	10				
NM	0	0	0	0				
OK	0	1	1	2				
SD	16	12	17	12				
TX	3	3	2	4				
WA	2	0	1	2				
Oth Sts	10	5	5	3				
US	78	67	52	60				

* Revised.

**Cattle on Feed: Number of Feedlots, Inventory, and Marketings,
by Size of Feedlot, United States 2003-2004 ¹**

Year	Feedlot Capacity in Number of Head					
	1,000 - 1,999			2,000 - 3,999		
	Lots	Inventory	Cattle Marketed	Lots	Inventory	Cattle Marketed
	<i>Number</i>	<i>1,000 Head</i>	<i>1,000 Head</i>	<i>Number</i>	<i>1,000 Head</i>	<i>1,000 Head</i>
2003	852	467	925	552	704	1,403
2004	835	469	823	549	737	1,261

¹ Number of feedlots is the number of lots operating at anytime during the year. Inventory is the number on hand January 1 of the following year. The United States totals show the actual number of feedlots, inventory, and number of animals marketed in each size group. The sum of the numbers shown by State under a specified size group may or may not add to the United States total for that size group since for some States size groups are combined to avoid disclosing individual operations.

**Cattle on Feed: Number of Feedlots, Inventory, and Marketings,
by Size of Feedlot, United States 2003-2004 ¹**

Year	Feedlot Capacity in Number of Head					
	4,000 - 7,999			8,000 - 15,999		
	Lots	Inventory	Cattle Marketed	Lots	Inventory	Cattle Marketed
	<i>Number</i>	<i>1,000 Head</i>	<i>1,000 Head</i>	<i>Number</i>	<i>1,000 Head</i>	<i>1,000 Head</i>
2003	347	944	1,915	195	1,442	*2,920
2004	338	971	1,787	190	1,320	2,615

¹ Number of feedlots is the number of lots operating at anytime during the year. Inventory is the number on hand January 1 of the following year. The United States totals show the actual number of feedlots, inventory, and number of animals marketed in each size group. The sum of the numbers shown by State under a specified size group may or may not add to the United States total for that size group since for some States size groups are combined to avoid disclosing individual operations.

**Cattle on Feed: Number of Feedlots, Inventory, and Marketings, by
Size of Feedlot, State, and United States 2003-2004 ¹ (continued)**

Year and State	Feedlot Capacity in Number of Head					
	1,000 - 3,999			4,000 - 15,999		
	Lots	Inventory	Cattle Marketed	Lots	Inventory	Cattle Marketed
	<i>Number</i>	<i>1,000 Head</i>	<i>1,000 Head</i>	<i>Number</i>	<i>1,000 Head</i>	<i>1,000 Head</i>
2003						
AZ						
CA	3	5	6	7	26	35
CO	82	63	95	58	242	400
ID	22	24	39	² 28	² 276	² 668
IA	308	280	563	32	90	226
KS	76	55	140	88	460	905
NE	525	495	920	192	915	1,890
NM				² 4	² 12	² 30
OK	3	3	5	12	55	118
SD	126	92	241	² 26	² 108	² 226
TX	12	11	25	40	249	495
WA	² 10	² 26	² 34	² 6	² 69	² 165
Oth Sts	243	140	290	53	136	340
US	1,404	1,171	2,328	542	2,386	4,835
2004						
AZ						
CA	3	4	5	5	18	22
CO	82	71	110	56	205	365
ID	23	21	32	² 27	² 274	² 608
IA	292	330	510	² 33	² 120	² 208
KS	75	70	115	85	410	810
NE	525	465	880	193	890	1,790
NM				² 4	² 15	² 27
OK	4	7	10	11	54	101
SD	130	88	192	² 23	² 104	² 213
TX	11	9	20	39	240	485
WA	² 10	² 26	² 39	² 6	² 75	² 131
Oth Sts	235	140	205	51	145	240
US	1,384	1,206	2,084	528	2,291	4,402

See footnote(s) at end of table.

--continued

**Cattle on Feed: Number of Feedlots, Inventory, and Marketings, by
Size of Feedlot, State, and United States 2003-2004 ¹ (continued)**

Year and State	Feedlot Capacity in Number of Head					
	16,000 - 31,999			32,000 and Over		
	Lots	Inventory	Cattle Marketed	Lots	Inventory	Cattle Marketed
	<i>Number</i>	<i>1,000 Head</i>	<i>1,000 Head</i>	<i>Number</i>	<i>1,000 Head</i>	<i>1,000 Head</i>
2003						
AZ	² 3	² 34	² 42	3	259	288
CA	7	139	186	5	340	494
CO	15	241	445	10	494	1,330
ID						
IA						
KS	30	555	1,275	31	1,360	3,150
NE	35	555	1,120	8	315	635
NM	2	29	47	2	74	123
OK	2	49	113	7	248	540
SD						
TX	33	550	1,090	49	2,020	4,360
WA				3	105	244
Oth Sts	² 4	² 54	² 129			
US	139	2,343	*4,795	120	5,353	11,509
2004						
AZ	² 3	² 27	² 42	3	304	280
CA	8	166	201	5	347	500
CO	15	250	425	11	554	1,180
ID						
IA						
KS	33	600	1,250	32	1,330	3,160
NE	32	550	1,100	10	395	710
NM	2	37	63	2	74	121
OK	2	44	111	7	245	514
SD						
TX	32	501	1,070	49	1,950	4,110
WA				3	89	253
Oth Sts	² 4	² 55	² 96			
US	140	2,385	4,679	124	5,417	11,139

See footnote(s) at end of table.

--continued

**Cattle on Feed: Number of Feedlots, Inventory, and Marketings, by
Size of Feedlot, State, and United States 2003-2004¹ (continued)**

Year and State	Feedlot Capacity in Number of Head		
	Total - 1,000+ Capacity Feedlots		
	Lots	Inventory	Cattle Marketed
	<i>Number</i>	<i>1,000 Head</i>	<i>1,000 Head</i>
2003			
AZ	6	293	330
CA	22	510	721
CO	165	1,040	2,270
ID	50	300	707
IA	340	370	789
KS	225	2,430	5,470
NE	760	2,280	4,565
NM	8	115	200
OK	24	355	776
SD	152	200	467
TX	134	2,830	5,970
WA	19	200	443
Oth Sts	300	330	759
US	2,205	11,253	23,467
2004			
AZ	6	331	322
CA	21	535	728
CO	164	1,080	2,080
ID	50	295	640
IA	325	450	718
KS	225	2,410	5,335
NE	760	2,300	4,480
NM	8	126	211
OK	24	350	736
SD	153	192	405
TX	131	2,700	5,685
WA	19	190	423
Oth Sts	290	340	541
US	2,176	*11,299	22,304

* Revised.

¹ Number of feedlots is the number of lots operating at anytime during the year. Inventory is the number on hand January 1 of the following year. The United States totals show the actual number of feedlots, inventory, and number of animals marketed in each size group. The sum of the numbers shown by State under a specified size group may or may not add to the United States total for that size group since for some States size groups are combined to avoid disclosing individual operations.

² Lots, inventory, and marketings from other size groups are included to avoid disclosing individual operations.

**Cattle on Feed: Feedlot Capacity, 1000+ Capacity Feedlots,
United States, January 1, 2003-2005¹**

Item	Feedlot Capacity in Number of Head		
	2003	2004	2005
	<i>1,000 Head</i>	<i>1,000 Head</i>	<i>1,000 Head</i>
US	16,500	16,600	16,600

¹ Total capacity of all 1000+ capacity feedlots in the U.S.

**Cattle on Feed: Number of Feedlots, Inventory, and Marketings,
by Size of Feedlot, Region, and United States 2003-2004 ¹**

Year and State	Feedlot Capacity in Number of Head					
	16,000 - 23,999			24,000 - 31,999		
	Lots	Inventory	Cattle Marketed	Lots	Inventory	Cattle Marketed
	<i>Number</i>	<i>1,000 Head</i>	<i>1,000 Head</i>	<i>Number</i>	<i>1,000 Head</i>	<i>1,000 Head</i>
2003						
AZ,CA,TX	21	285	548	21	433	765
CO,KS,NE	52	729	1,460	28	622	1,380
Oth Sts	6	84	181	11	190	*461
US	79	1,098	2,189	60	1,245	*2,606
2004						
AZ,CA,TX	22	276	536	20	413	773
CO,KS,NE	55	825	1,575	25	575	1,200
Oth Sts	8	122	239	10	174	356
US	85	1,223	2,350	55	1,162	2,329

See footnote(s) at end of table.

--continued

**Cattle on Feed: Number of Feedlots, Inventory, and Marketings, by
Size of Feedlot, Region, and United States 2003-2004 ¹ (continued)**

Year and State	Feedlot Capacity in Number of Head					
	32,000 - 49,999			50,000 and Over		
	Lots	Inventory	Cattle Marketed	Lots	Inventory	Cattle Marketed
	<i>Number</i>	<i>1,000 Head</i>	<i>1,000 Head</i>	<i>Number</i>	<i>1,000 Head</i>	<i>1,000 Head</i>
2003						
AZ,CA,TX	32	1,074	2,099	25	1,545	3,043
CO,KS,NE	30	944	2,180	19	1,225	2,935
Oth Sts	5	142	265	9	423	987
US	67	2,160	4,544	53	3,193	6,965
2004						
AZ,CA,TX	31	964	1,905	26	1,637	2,985
CO,KS,NE	34	1,019	2,190	19	1,260	2,860
Oth Sts	5	143	300	9	394	899
US	70	2,126	4,395	54	3,291	6,744

* Revised.

¹ Number of feedlots is the number of lots operating at anytime during the year. Inventory is the number on hand January 1 of the following year.

**Cattle on Feed: Number of Feedlots, Inventory, and Marketings,
Feedlots With Less Than 1,000 Head Capacity,
by State, and United States 2003-2004¹**

Year and State	Lots	Inventory	Cattle Marketed
	<i>Number</i>	<i>1,000 Head</i>	<i>1,000 Head</i>
2003			
IL	5,400	154	250
IN	5,800	101	170
IA	10,500	580	970
MI	3,900	171	250
MN	6,600	229	320
MO	2,800	47	80
NE	4,140	170	300
ND	1,300	40	70
OH	6,700	188	290
PA	4,900	69	120
SD	3,100	175	270
WI	6,800	200	310
Oth Sts	29,060	*435.9	700
US	91,000	*2,559.9	4,100
2004			
IL	5,700	168	230
IN	6,000	116	160
IA	9,500	470	780
MI	3,900	157	230
MN	5,500	194	300
MO	3,100	52	70
NE	3,800	170	310
ND	1,100	34	60
OH	6,500	182	300
PA	4,600	74	120
SD	3,100	208	280
WI	7,700	211	310
Oth Sts	27,500	413.7	700
US	88,000	2,449.7	3,850

* Revised.

¹ Number of feedlots is the number of lots operating at the end of the year. Inventory is the number on hand January 1 of the following year.

**Cattle on Feed: Number of Feedlots, Inventory, and Marketings,
by Size of Feedlot, United States 2003-2004¹**

Feedlot Capacity	2003			2004		
	Lots	Inventory	Cattle Marketed	Lots	Inventory	Cattle Marketed
	<i>No.</i>	<i>1,000 Head</i>	<i>1,000 Head</i>	<i>No.</i>	<i>1,000 Head</i>	<i>1,000 Head</i>
Less than 1,000 head	91,000	*2,559.9	4,100	88,000	2,449.7	3,850
1,000 head or more	2,205	11,253	23,467	2,176	*11,299	22,304
All Feedlots	93,205	*13,812.9	27,567	90,176	13,748.7	26,154

* Revised.

¹ Number of feedlots with capacity less than 1,000 head is the number of lots operating at the end of the year. Number of feedlots with capacity 1,000 head or more is the number of lots operating at anytime during the year. Inventory is the number on hand January 1 of the following year.

Terms and Definitions of Cattle on Feed Estimates

Cattle on feed are animals being fed a ration of grain, silage, hay and/or protein supplement for slaughter market that are expected to produce a carcass that will grade select or better. It excludes cattle being "backgrounded only" for later sale as feeders or later placement in another feedlot.

Placements are cattle put into a feedlot, fed a ration which will produce a carcass that will grade select or better, and are intended for the slaughter market.

Marketings are cattle shipped out of feedlots to a slaughter market.

Other disappearance includes death loss, movement from feedlots to pasture, and shipments to other feedlots for further feeding.

Reliability of Cattle on Feed Estimates

Survey Procedures: During January and July all known feedlots in the U.S. with capacity of 1,000 or more head are surveyed to provide data for cattle on feed estimates. During the other months, all known feedlots from 17 States are surveyed. The 17 States account for 98 percent of the cattle on feed.

Estimating Procedures: These cattle on feed estimates were prepared by the Agricultural Statistics Board after reviewing recommendations and analysis submitted by each State office. Regional and State survey data were reviewed for reasonableness with each other and with estimates from the previous month when setting the current estimates.

Revision Policy: Revisions to previous estimates are made to improve month to month relationships. Estimates for the previous month are subject to revision in all States each month when current estimates are made. In February, all monthly estimates for the previous year, and the number of feedlots and annual marketings from two years ago are reviewed and subject to revisions. The reviews are primarily based on slaughter data, state check-off or brand data, and any other data that may have been received after the original estimate was made. Estimates will also be reviewed after data from the Census of Agriculture are available. No revisions will be made after that date and estimates become final.

Reliability: Since all 1000+ capacity cattle on feed operators in every State are not included in the monthly survey, survey estimates are subject to sampling variability. Survey results are also subject to non-sampling errors such as omissions, duplications, and mistakes in reporting, recording, and processing the data. The effects of these errors cannot be measured directly. They are minimized through rigid quality controls in the data collection process and through a careful review of all reported data for consistency and reasonableness.

Index

Page

Cattle on Feed, 1,000+ Capacity Feedlots, State and U.S., January 1, 2004 and February 1, 2004-2005	3
Cattle on Feed, 1,000+ Capacity Feedlots, State and U.S., January 2004 - December 2004	6
Cattle on Feed, 1,000+ Capacity Feedlots, United States Summary	2
Cattle on Feed, Feedlot Capacity, 1,000+ Capacity Feedlots, United States, January 1, 2003-2004	18
Cattle on Feed, Number by Class, 1,000+ Capacity Feedlots, State and U.S., January 2004-October 2004	14
Marketings, 1,000+ Capacity Feedlots, State and U.S., December 2003 and January 2004-November 2004	12
Marketings, 1,000+ Capacity Feedlots, State and U.S., December 2004 and January 2004-2005	5
Number of Feedlots, Inventory, and Marketings by Size of Feedlot, Region and U.S., 2003-2004	19
Number of Feedlots, Inventory, and Marketings by Size of Feedlot, U.S., 2003-2004	15
Number of Feedlots, Inventory, and Marketings by Size of Feedlot, U.S., 2003-2004	21
Number of Feedlots with less than 1000 Head Capacity, Inventory, and Marketings, State and U.S., 2003-2004	21
Other Disappearance, 1,000+ Capacity Feedlots, State and U.S., December 2003 and January 2004-November 2004	13
Other Disappearance, 1,000+ Capacity Feedlots, State and U.S., December 2004 and January 2004-2005	5
Placements, 1000+ Capacity Feedlots, State and U.S., December 2003 and January 2004-November 2004	7
Placements, 1000+ Capacity Feedlots, State and U.S., December 2004 and January 2004-2005	4
Placements by Weight Group, 1,000+ Capacity Feedlots, State and U.S., December 2003 and January 2004-November 2004	8
Placements by Weight Group, 1,000+ Capacity Feedlots, State and U.S., December 2003-2004 and January 2004-2005	4
Reliability of Cattle on Feed Estimates	22
Terms and Definitions of Cattle on Feed Estimates	22

ACCESS TO REPORTS!!

For your convenience, there are several ways to obtain NASS reports, data products, and services:

INTERNET ACCESS

All NASS reports are available free of charge on the worldwide Internet. For access, connect to the Internet and go to the NASS Home Page at: www.usda.gov/nass/. Select "Today's Reports" or Publications and then Reports Calendar or Publications and then Search, by Title or Subject.

E-MAIL SUBSCRIPTION

All NASS reports are available by subscription free of charge direct to your e-mail address. Starting with the NASS Home Page at www.usda.gov/nass/, click on **Publications**, then click on the **Subscribe by E-mail** button which takes you to the page describing e-mail delivery of reports. Finally, click on **Go to the Subscription Page** and follow the instructions.

PRINTED REPORTS OR DATA PRODUCTS

CALL OUR TOLL-FREE ORDER DESK: 800-999-6779 (U.S. and Canada)
Other areas, please call 703-605-6220 FAX: 703-605-6900
(Visa, MasterCard, check, or money order acceptable for payment.)

ASSISTANCE

For **assistance** with general agricultural statistics or further information about NASS or its products or services, contact the **Agricultural Statistics Hotline** at **800-727-9540**, 7:30 a.m. to 4:00 p.m. ET, or e-mail: nass@nass.usda.gov.

The United States Department of Agriculture (USDA) prohibits discrimination in all its programs on the basis of race, color, national origin, gender, religion, age, disability, political beliefs, sexual orientation, and marital or family status. (Not all prohibited bases apply to all programs.) Persons with disabilities who require alternative means for communication of program information (braille, large print, audiotape, etc.) should contact the USDA's TARGET Center at 202-720-2600 (voice and TDD).

To file a complaint of discrimination, write USDA, Director, Office of Civil Rights, Room 326-W, Whitten Building, 1400 Independence Avenue, SW, Washington, D.C., 20250-9410, or call 202-720-5964 (voice or TDD). USDA is an equal opportunity provider and employer.