



Cattle On Feed

Released March 18, 2005, by the National Agricultural Statistics Service (NASS), Agricultural Statistics Board, U.S. Department of Agriculture. For information on *Cattle on Feed* call Mike Miller at (202) 720-3040, office hours 7:30 a.m. to 4:00 p.m. ET.

U.S. Cattle on Feed Up 2 Percent

Cattle and calves on feed for slaughter market in the United States for feedlots with capacity of 1,000 or more head totaled 11.2 million head on March 1, 2005. The inventory was 2 percent above March 1, 2004 and 6 percent above March 1, 2003.

Placements in feedlots during February totaled 1.52 million, 6 percent below 2004 and 8 percent below 2003. This is the second lowest placements for the month of February since the series began in 1996. Net placements were 1.45 million. During February, placements of cattle and calves weighing less than 600 pounds were 277,000, 600-699 pounds were 308,000, 700-799 pounds were 526,000, and 800 pounds and greater were 412,000.

Marketings of fed cattle during February totaled 1.63 million, 4 percent below 2004 and 6 percent below 2003. This is the lowest fed cattle marketings for the month of February since the series began in 1996.

Other disappearance totaled 76,000 during February, 10 percent above 2004 and 7 percent above 2003.

**Cattle on Feed: Number on Feed, Placements, Marketings, and
Other Disappearance, 1,000+ Capacity Feedlots,
United States, March 1, 2003-2005**

Item	Number			2005 as % of	
	2003	2004	2005	2003	2004
	<i>1,000 Head</i>	<i>1,000 Head</i>	<i>1,000 Head</i>	<i>Percent</i>	<i>Percent</i>
On Feed Feb 1 ¹	10,700	11,138	*11,339	106	102
Placed on Feed During Feb	1,650	1,612	1,523	92	94
Fed Cattle Marketed During Feb	1,733	1,694	1,634	94	96
Other Disappearance During Feb ²	71	69	76	107	110
On Feed Mar 1 ¹	10,546	10,987	11,152	106	102

* Revised.

¹ Cattle and calves on feed are animals for slaughter market being fed a ration of grain or other concentrates and are expected to produce a carcass that will grade select or better.

² Includes death loss, movement from feedlots to pasture, and shipments to other feedlots for further feeding.

**Cattle on Feed: Number on Feed, Placements, Marketings, and
Other Disappearance, 1,000+ Capacity Feedlots,
United States, February 1, 2003-2005**

Item	Number			2005 as % of	
	2003	2004	2005	2003	2004
	<i>1,000 Head</i>	<i>1,000 Head</i>	<i>1,000 Head</i>	<i>Percent</i>	<i>Percent</i>
On Feed Jan 1 ¹	10,658	11,253	11,299	106	100
Placed on Feed During Jan	2,089	1,754	1,885	90	107
Fed Cattle Marketed During Jan	1,972	1,775	*1,771	90	100
Other Disappearance During Jan ²	75	94	74	99	79
On Feed Feb 1 ¹	10,700	11,138	*11,339	106	102

* Revised.

¹ Cattle and calves on feed are animals for slaughter market being fed a ration of grain or other concentrates and are expected to produce a carcass that will grade select or better.

² Includes death loss, movement from feedlots to pasture, and shipments to other feedlots for further feeding.

**Cattle on Feed: Number on Feed, 1,000+ Capacity Feedlots,
by Month, State, and United States 2004-2005 ¹**

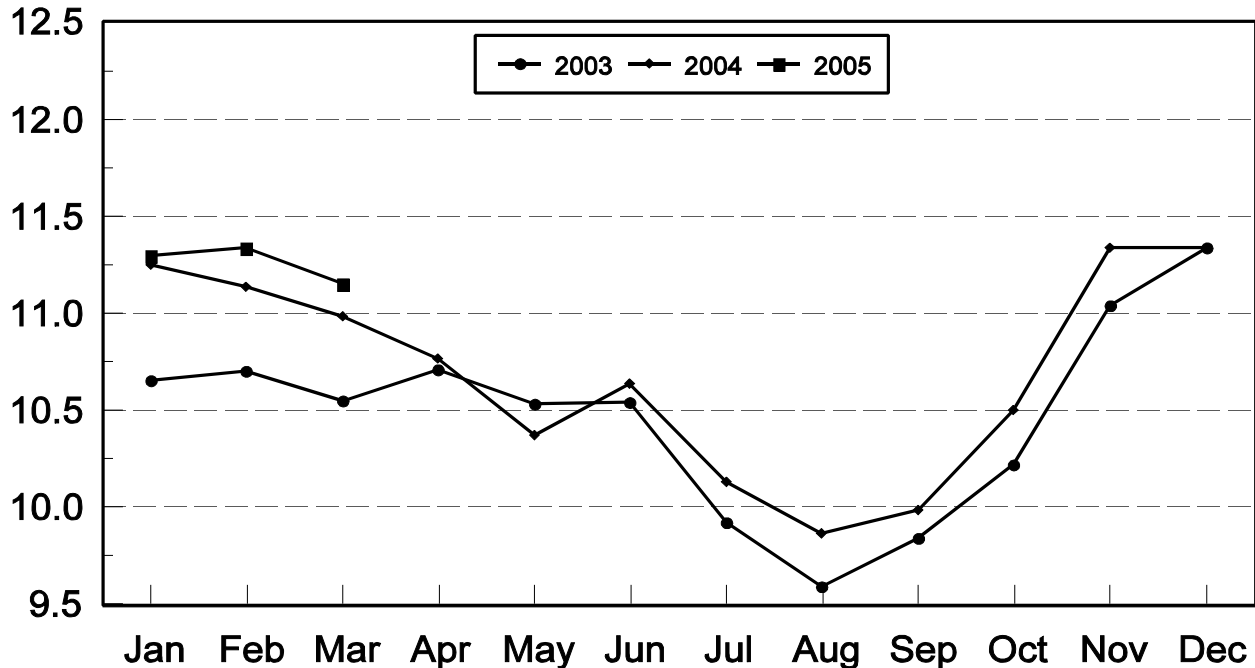
State	Mar 1, 2004	Feb 1, 2005	Mar 1, 2005		
			Number	as % of 2004	as % of Feb
	<i>1,000 Head</i>	<i>1,000 Head</i>	<i>1,000 Head</i>	<i>Percent</i>	<i>Percent</i>
AZ	295	325	322	109	99
CA	500	525	515	103	98
CO	1,020	1,060	1,040	102	98
ID	265	*270	250	94	93
IA	405	465	465	115	100
KS	2,390	2,420	2,370	99	98
NE	2,270	2,350	2,320	102	99
NM	112	129	125	112	97
OK	335	350	340	101	97
SD	210	205	210	100	102
TX	2,690	2,720	2,690	100	99
WA	185	190	185	100	97
Oth Sts	310	330	320	103	97
US	10,987	*11,339	11,152	102	98

* Revised.

¹ Cattle and calves on feed are animals for slaughter market being fed a ration of grain or other concentrates and are expected to produce a carcass that will grade select or better.

United States Cattle on Feed 1,000+ Capacity Feedlots

Million Head



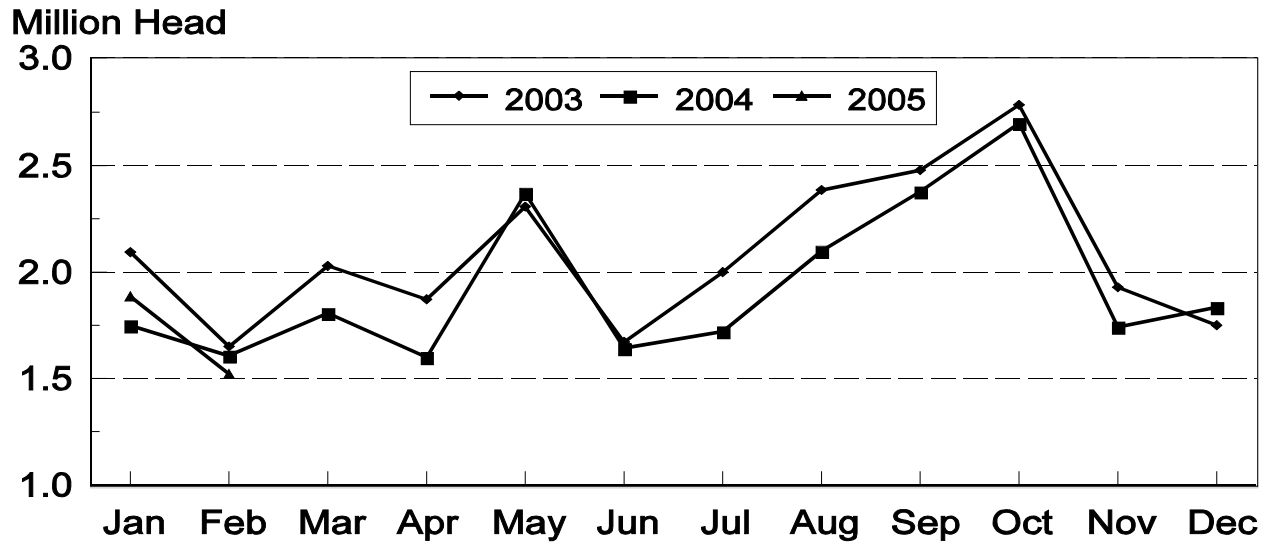
**Cattle on Feed: Number Placed on Feed, 1,000+ Capacity Feedlots,
by Month, State, and United States 2004-2005**

State	During Feb 2004	During Jan 2005	During Feb 2005		
			Number	as % of 2004	as % of Jan
	<i>1,000 Head</i>	<i>1,000 Head</i>	<i>1,000 Head</i>	<i>Percent</i>	<i>Percent</i>
AZ	27	27	23	85	85
CA	56	59	49	88	83
CO	155	175	175	113	100
ID	43	37	33	77	89
IA	61	77	57	93	74
KS	390	475	360	92	76
NE	350	425	315	90	74
NM	16	18	13	81	72
OK	47	55	48	102	87
SD	43	41	32	74	78
TX	350	425	340	97	80
WA	26	30	32	123	107
Oth Sts	48	41	46	96	112
US	1,612	1,885	1,523	94	81

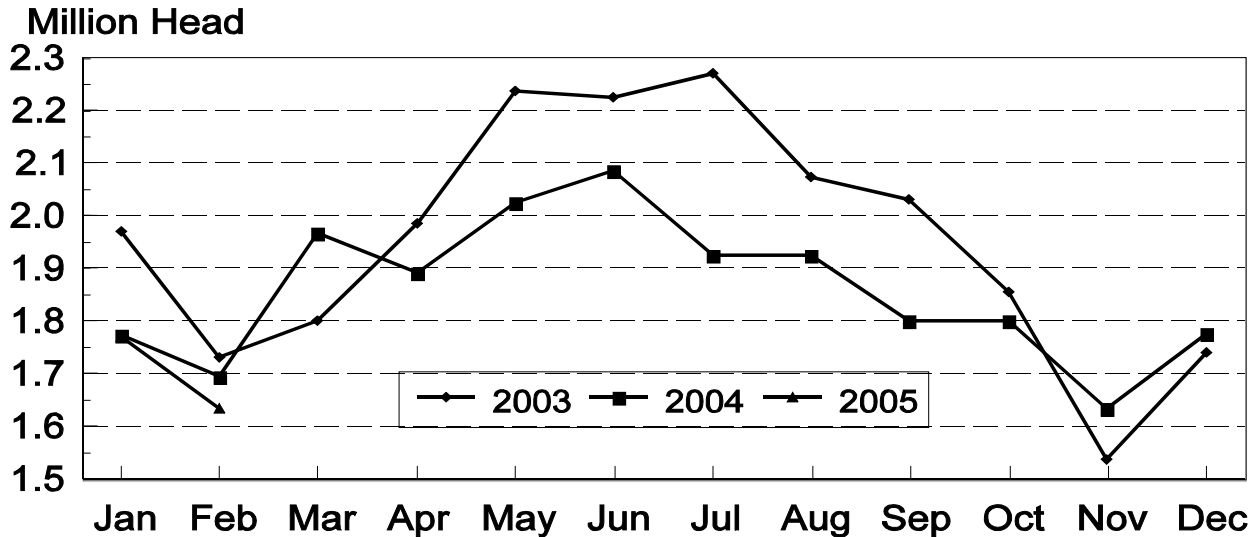
**Cattle on Feed: Number Placed on Feed by Weight Group, 1,000+ Capacity
Feedlots, by Month, State, and United States, 2004-2005**

State	During February									
	Under 600		600-699		700-799		800 Plus		Total	
	2004	2005	2004	2005	2004	2005	2004	2005	2004	2005
	<i>1,000 Head</i>	<i>1,000 Head</i>	<i>1,000 Head</i>	<i>1,000 Head</i>	<i>1,000 Head</i>	<i>1,000 Head</i>	<i>1,000 Head</i>	<i>1,000 Head</i>	<i>1,000 Head</i>	<i>1,000 Head</i>
CO	13	15	38	45	58	70	46	45	155	175
KS	55	50	85	75	150	125	100	110	390	360
NE	51	42	63	63	125	111	111	99	350	315
TX	85	70	100	75	125	135	40	60	350	340
Oth Sts	115	100	65	50	90	85	97	98	367	333
US	319	277	351	308	548	526	394	412	1,612	1,523
	During January									
	Under 600		600-699		700-799		800 Plus		Total	
	2004	2005	2004	2005	2004	2005	2004	2005	2004	2005
	<i>1,000 Head</i>	<i>1,000 Head</i>	<i>1,000 Head</i>	<i>1,000 Head</i>	<i>1,000 Head</i>	<i>1,000 Head</i>	<i>1,000 Head</i>	<i>1,000 Head</i>	<i>1,000 Head</i>	<i>1,000 Head</i>
CO	25	25	45	45	61	70	34	35	165	175
KS	60	65	140	135	175	170	80	105	455	475
NE	47	50	95	93	140	153	98	129	380	425
TX	110	120	120	110	115	145	45	50	390	425
Oth Sts	125	120	66	75	88	90	85	100	364	385
US	367	380	466	458	579	628	342	419	1,754	1,885

United States Cattle on Feed 1,000+ Capacity Feedlots Number Placed



United States Cattle on Feed 1,000+ Capacity Feedlots Number Marketed



**Cattle on Feed: Number Marketed, 1,000+ Capacity Feedlots,
by Month, State, and United States 2004-2005**

State	During Feb 2004	During Jan 2005	During Feb 2005		
			Number	as % of 2004	as % of Jan
	<i>1,000 Head</i>	<i>1,000 Head</i>	<i>1,000 Head</i>	<i>Percent</i>	<i>Percent</i>
AZ	25	30	24	96	80
CA	52	63	54	104	86
CO	165	185	185	112	100
ID	52	*61	52	100	85
IA	40	60	55	138	92
KS	405	450	390	96	87
NE	345	360	330	96	92
NM	20	13	14	70	108
OK	59	52	56	95	108
SD	32	26	26	81	100
TX	420	395	360	86	91
WA	34	29	35	103	121
Oth Sts	45	47	53	118	113
US	1,694	*1,771	1,634	96	92

* Revised.

**Cattle on Feed: Other Disappearance, 1,000+ Capacity Feedlots,
by Month, State, and United States 2004-2005 ¹**

State	During Feb 2004	During Jan 2005	During Feb 2005		
			Number	as % of 2004	as % of Jan
	<i>1,000 Head</i>	<i>1,000 Head</i>	<i>1,000 Head</i>	<i>Percent</i>	<i>Percent</i>
AZ	3	3	2	67	67
CA	4	6	5	125	83
CO	10	10	10	100	100
ID	1	1	1	100	100
IA	1	2	2	200	100
KS	15	15	20	133	133
NE	15	15	15	100	100
NM	1	2	3	300	150
OK	3	3	2	67	67
SD	1	2	1	100	50
TX	10	10	10	100	100
WA	2	1	2	100	200
Oth Sts	3	4	3	100	75
US	69	74	76	110	103

¹ Includes death loss, movement from feedlots to pasture, and shipments to other feedlots for further feeding.

Terms and Definitions of Cattle on Feed Estimates

Cattle on feed are animals being fed a ration of grain, silage, hay and/or protein supplement for slaughter market that are expected to produce a carcass that will grade select or better. It excludes cattle being "backgrounded only" for later sale as feeders or later placement in another feedlot.

Placements are cattle put into a feedlot, fed a ration which will produce a carcass that will grade select or better, and are intended for the slaughter market.

Marketings are cattle shipped out of feedlots to a slaughter market.

Other disappearance includes death loss, movement from feedlots to pasture, and shipments to other feedlots for further feeding.

Reliability of Cattle on Feed Estimates

Survey Procedures: During January and July all known feedlots in the U.S. with capacity of 1,000 or more head are surveyed to provide data for cattle on feed estimates. During the other months, all known feedlots from 17 States are surveyed. The 17 States account for 98 percent of the cattle on feed.

Estimating Procedures: These cattle on feed estimates were prepared by the Agricultural Statistics Board after reviewing recommendations and analysis submitted by each State office. Regional and State survey data were reviewed for reasonableness with each other and with estimates from the previous month when setting the current estimates.

Revision Policy: Revisions to previous estimates are made to improve month to month relationships. Estimates for the previous month are subject to revision in all States each month when current estimates are made. In February, all monthly estimates for the previous year, and the number of feedlots and annual marketings from two years ago are reviewed and subject to revisions. The reviews are primarily based on slaughter data, state check-off or brand data, and any other data that may have been received after the original estimate was made. Estimates will also be reviewed after data from the Census of Agriculture are available. No revisions will be made after that date and estimates become final.

Reliability: Since all 1000+ capacity cattle on feed operators in every State are not included in the monthly survey, survey estimates are subject to sampling variability. Survey results are also subject to non-sampling errors such as omissions, duplications, and mistakes in reporting, recording, and processing the data. The effects of these errors cannot be measured directly. They are minimized through rigid quality controls in the data collection process and through a careful review of all reported data for consistency and reasonableness.

ACCESS TO REPORTS!!

For your convenience, there are several ways to obtain NASS reports, data products, and services:

INTERNET ACCESS

All NASS reports are available free of charge on the worldwide Internet. For access, connect to the Internet and go to the NASS Home Page at: www.usda.gov/nass/. Select "Today's Reports" or Publications and then Reports Calendar or Publications and then Search, by Title or Subject.

E-MAIL SUBSCRIPTION

All NASS reports are available by subscription free of charge direct to your e-mail address. Starting with the NASS Home Page at www.usda.gov/nass/, click on **Publications**, then click on the **Subscribe by E-mail** button which takes you to the page describing e-mail delivery of reports. Finally, click on **Go to the Subscription Page** and follow the instructions.

PRINTED REPORTS OR DATA PRODUCTS

CALL OUR TOLL-FREE ORDER DESK: 800-999-6779 (U.S. and Canada)
Other areas, please call 703-605-6220 FAX: 703-605-6900
(Visa, MasterCard, check, or money order acceptable for payment.)

ASSISTANCE

For **assistance** with general agricultural statistics or further information about NASS or its products or services, contact the **Agricultural Statistics Hotline** at **800-727-9540**, 7:30 a.m. to 4:00 p.m. ET, or e-mail: nass@nass.usda.gov.

The United States Department of Agriculture (USDA) prohibits discrimination in all its programs on the basis of race, color, national origin, gender, religion, age, disability, political beliefs, sexual orientation, and marital or family status. (Not all prohibited bases apply to all programs.) Persons with disabilities who require alternative means for communication of program information (braille, large print, audiotape, etc.) should contact the USDA's TARGET Center at 202-720-2600 (voice and TDD).

To file a complaint of discrimination, write USDA, Director, Office of Civil Rights, Room 326-W, Whitten Building, 1400 Independence Avenue, SW, Washington, D.C., 20250-9410, or call 202-720-5964 (voice or TDD). USDA is an equal opportunity provider and employer.