



Cattle On Feed

Released April 22, 2005, by the National Agricultural Statistics Service (NASS), Agricultural Statistics Board, U.S. Department of Agriculture. For information on *Cattle on Feed* call Mike Miller at (202) 720-3040, office hours 7:30 a.m. to 4:00 p.m. ET.

U.S. Cattle on Feed Up 1 Percent

Cattle and calves on feed for slaughter market in the United States for feedlots with capacity of 1,000 or more head totaled 10.9 million head on April 1, 2005. The inventory was 1 percent above April 1, 2004 and 1 percent above April 1, 2003. The inventory included 6.99 million steers and steer calves, up 5 percent from the previous year. This group accounted for 64 percent of the total inventory. Heifers and heifer calves accounted for 3.80 million head, down 6 percent from 2004.

Placements in feedlots during March totaled 1.76 million, 3 percent below 2004 and 13 percent below 2003. This is the second lowest placements for the month of March since the series began in 1996. Net placements were 1.69 million. During March, placements of cattle and calves weighing less than 600 pounds were 299,000, 600-699 pounds were 320,000, 700-799 pounds were 614,000, and 800 pounds and greater were 527,000.

Marketings of fed cattle during March totaled 1.97 million, up slightly from 2004 and 9 percent above 2003.

Other disappearance totaled 69,000 during March, 3 percent above 2004 and 11 percent above 2003.

**Cattle on Feed: Number on Feed, Placements, Marketings, and
Other Disappearance, 1,000+ Capacity Feedlots,
United States, April 1, 2003-2005**

Item	Number			2005 as % of	
	2003	2004	2005	2003	2004
	<i>1,000 Head</i>	<i>1,000 Head</i>	<i>1,000 Head</i>	<i>Percent</i>	<i>Percent</i>
On Feed Mar 1 ¹	10,546	10,987	11,152	106	102
Placed on Feed During Mar	2,032	1,810	1,760	87	97
Fed Cattle Marketed During Mar	1,803	1,967	1,973	109	100
Other Disappearance During Mar ²	62	67	69	111	103
On Feed Apr 1 ¹	10,713	10,763	10,870	101	101

¹ Cattle and calves on feed are animals for slaughter market being fed a ration of grain or other concentrates and are expected to produce a carcass that will grade select or better.

² Includes death loss, movement from feedlots to pasture, and shipments to other feedlots for further feeding.

**Cattle on Feed: Number on Feed, Placements, Marketings, and
Other Disappearance, 1,000+ Capacity Feedlots,
United States, March 1, 2003-2005**

Item	Number			2005 as % of	
	2003	2004	2005	2003	2004
	<i>1,000 Head</i>	<i>1,000 Head</i>	<i>1,000 Head</i>	<i>Percent</i>	<i>Percent</i>
On Feed Feb 1 ¹	10,700	11,138	11,339	106	102
Placed on Feed During Feb	1,650	1,612	1,523	92	94
Fed Cattle Marketed During Feb	1,733	1,694	1,634	94	96
Other Disappearance During Feb ²	71	69	76	107	110
On Feed Mar 1 ¹	10,546	10,987	11,152	106	102

¹ Cattle and calves on feed are animals for slaughter market being fed a ration of grain or other concentrates and are expected to produce a carcass that will grade select or better.

² Includes death loss, movement from feedlots to pasture, and shipments to other feedlots for further feeding.

**Cattle on Feed: Number on Feed by Class, 1,000+ Capacity Feedlots,
United States, April 1, 2003-2005**

Item	Number			2005 as % of	
	2003	2004	2005	2003	2004
	<i>1,000 Head</i>	<i>1,000 Head</i>	<i>1,000 Head</i>	<i>Percent</i>	<i>Percent</i>
Class on Feed Apr 1					
Steers and Steer Calves	6,722	6,630	6,989	104	105
Heifers and Heifer Calves	3,921	4,066	3,803	97	94
Cows and Bulls	70	67	78	111	116

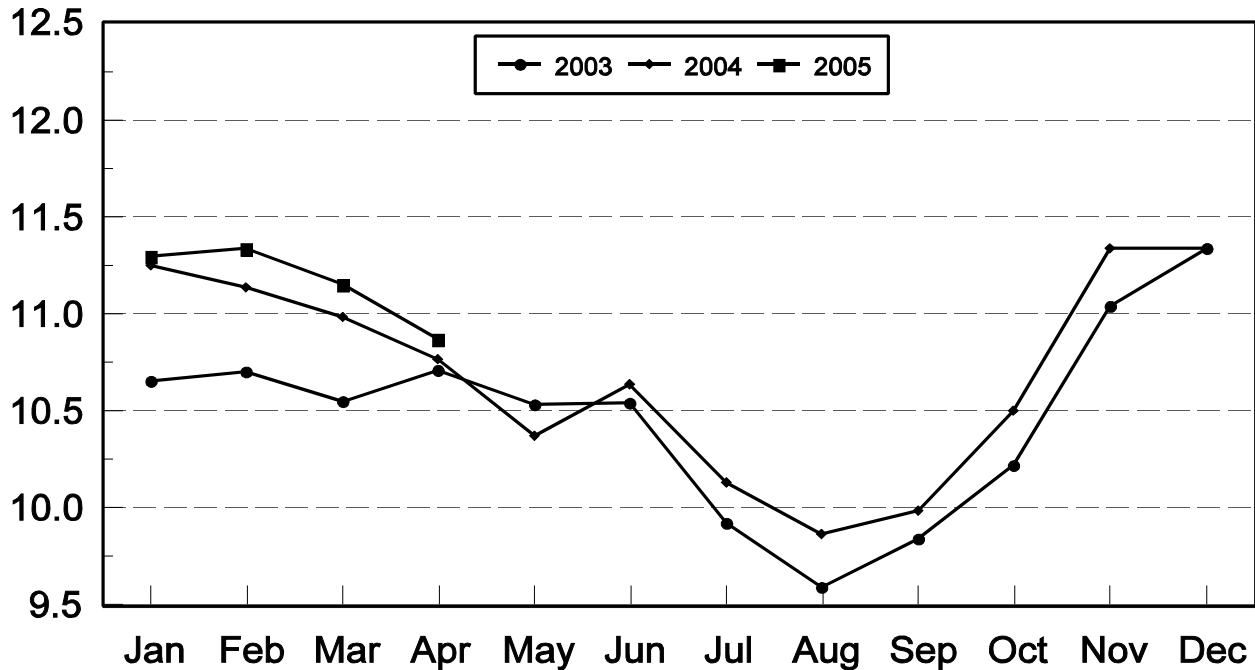
**Cattle on Feed: Number on Feed, 1,000+ Capacity Feedlots,
by Month, State, and United States 2004-2005 ¹**

State	Apr 1, 2004	Mar 1, 2005	Apr 1, 2005		
			Number	as % of 2004	as % of Mar
	<i>1,000 Head</i>	<i>1,000 Head</i>	<i>1,000 Head</i>	<i>Percent</i>	<i>Percent</i>
AZ	293	322	323	110	100
CA	495	515	500	101	97
CO	970	1,040	1,020	105	98
ID	255	250	240	94	96
IA	415	465	455	110	98
KS	2,360	2,370	2,340	99	99
NE	2,210	2,320	2,260	102	97
NM	105	125	113	108	90
OK	330	340	325	98	96
SD	205	210	205	100	98
TX	2,640	2,690	2,620	99	97
WA	185	185	159	86	86
Oth Sts	300	320	310	103	97
US	10,763	11,152	10,870	101	97

¹ Cattle and calves on feed are animals for slaughter market being fed a ration of grain or other concentrates and are expected to produce a carcass that will grade select or better.

United States Cattle on Feed 1,000+ Capacity Feedlots

Million Head



**Cattle on Feed: Number Placed on Feed, 1,000+ Capacity Feedlots,
by Month, State, and United States 2004-2005**

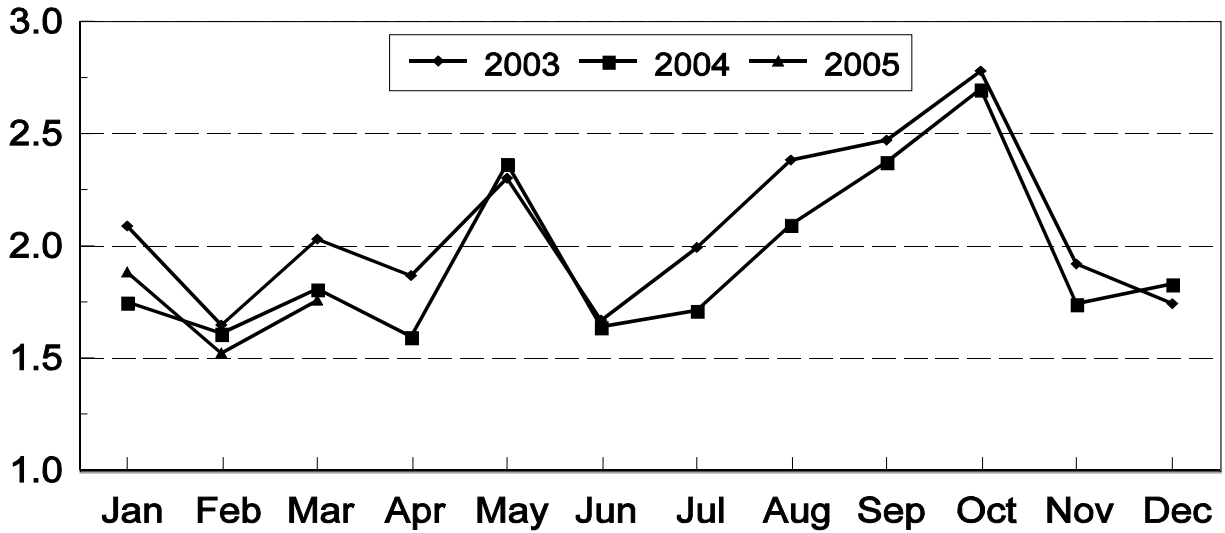
State	During Mar 2004	During Feb 2005	During Mar 2005		
			Number	as % of 2004	as % of Feb
	<i>1,000 Head</i>	<i>1,000 Head</i>	<i>1,000 Head</i>	<i>Percent</i>	<i>Percent</i>
AZ	33	23	27	82	117
CA	70	49	65	93	133
CO	150	175	175	117	100
ID	39	33	44	113	133
IA	69	57	55	80	96
KS	460	360	445	97	124
NE	295	315	300	102	95
NM	16	13	13	81	100
OK	74	48	61	82	127
SD	33	32	31	94	97
TX	490	340	480	98	141
WA	35	32	22	63	69
Oth Sts	46	46	42	91	91
US	1,810	1,523	1,760	97	116

**Cattle on Feed: Number Placed on Feed by Weight Group, 1,000+ Capacity
Feedlots, by Month, State, and United States, 2004-2005**

State	During March									
	Under 600		600-699		700-799		800 Plus		Total	
	2004	2005	2004	2005	2004	2005	2004	2005	2004	2005
	<i>1,000 Head</i>	<i>1,000 Head</i>	<i>1,000 Head</i>	<i>1,000 Head</i>	<i>1,000 Head</i>	<i>1,000 Head</i>	<i>1,000 Head</i>	<i>1,000 Head</i>	<i>1,000 Head</i>	<i>1,000 Head</i>
CO	15	15	30	35	60	70	45	55	150	175
KS	55	50	95	85	195	170	115	140	460	445
NE	32	34	47	52	106	92	110	122	295	300
TX	120	85	120	105	180	190	70	100	490	480
Oth Sts	125	115	55	43	105	92	130	110	415	360
US	347	299	347	320	646	614	470	527	1,810	1,760
	During February									
	Under 600		600-699		700-799		800 Plus		Total	
	2004	2005	2004	2005	2004	2005	2004	2005	2004	2005
	<i>1,000 Head</i>	<i>1,000 Head</i>	<i>1,000 Head</i>	<i>1,000 Head</i>	<i>1,000 Head</i>	<i>1,000 Head</i>	<i>1,000 Head</i>	<i>1,000 Head</i>	<i>1,000 Head</i>	<i>1,000 Head</i>
CO	13	15	38	45	58	70	46	45	155	175
KS	55	50	85	75	150	125	100	110	390	360
NE	51	42	63	63	125	111	111	99	350	315
TX	85	70	100	75	125	135	40	60	350	340
Oth Sts	115	100	65	50	90	85	97	98	367	333
US	319	277	351	308	548	526	394	412	1,612	1,523

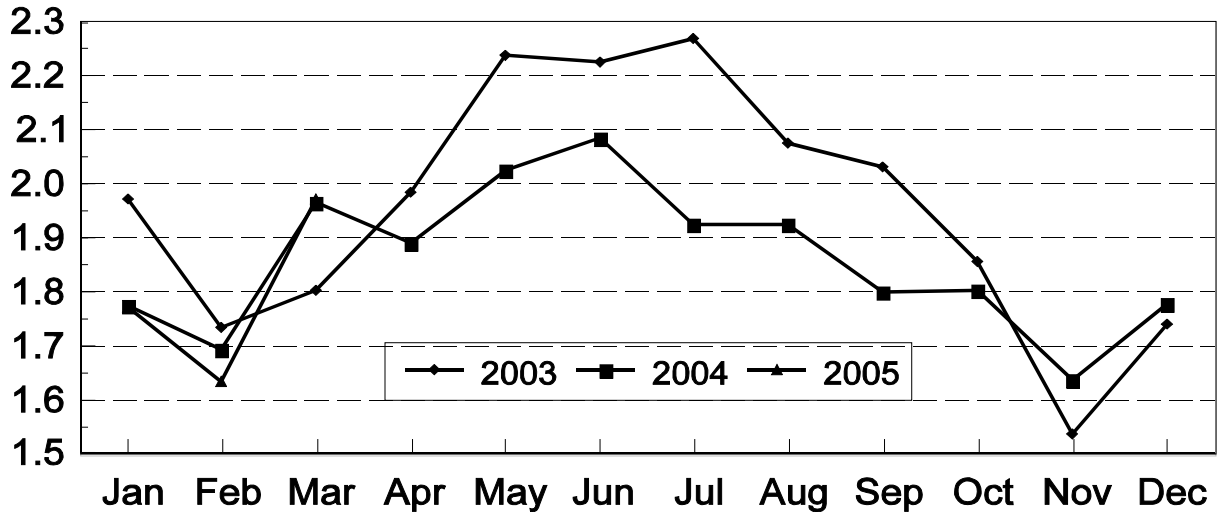
United States Cattle on Feed 1,000+ Capacity Feedlots Number Placed

Million Head



United States Cattle on Feed 1,000+ Capacity Feedlots Number Marketed

Million Head



**Cattle on Feed: Number Marketed, 1,000+ Capacity Feedlots,
by Month, State, and United States 2004-2005**

State	During Mar 2004	During Feb 2005	During Mar 2005		
			Number	as % of 2004	as % of Feb
	<i>1,000 Head</i>	<i>1,000 Head</i>	<i>1,000 Head</i>	<i>Percent</i>	<i>Percent</i>
AZ	32	24	24	75	100
CA	71	54	70	99	130
CO	190	185	185	97	100
ID	46	52	53	115	102
IA	56	55	64	114	116
KS	470	390	460	98	118
NE	350	330	350	100	106
NM	21	14	23	110	164
OK	77	56	73	95	130
SD	36	26	34	94	131
TX	530	360	540	102	150
WA	34	35	47	138	134
Oth Sts	54	53	50	93	94
US	1,967	1,634	1,973	100	121

**Cattle on Feed: Other Disappearance, 1,000+ Capacity Feedlots,
by Month, State, and United States 2004-2005 ¹**

State	During Mar 2004	During Feb 2005	During Mar 2005		
			Number	as % of 2004	as % of Feb
	<i>1,000 Head</i>	<i>1,000 Head</i>	<i>1,000 Head</i>	<i>Percent</i>	<i>Percent</i>
AZ	3	2	2	67	100
CA	4	5	10	250	200
CO	10	10	10	100	100
ID	3	1	1	33	100
IA	3	2	1	33	50
KS	20	20	15	75	75
NE	5	15	10	200	67
NM	2	3	2	100	67
OK	2	2	3	150	150
SD	2	1	2	100	200
TX	10	10	10	100	100
WA	1	2	1	100	50
Oth Sts	2	3	2	100	67
US	67	76	69	103	91

¹ Includes death loss, movement from feedlots to pasture, and shipments to other feedlots for further feeding.

**Cattle on Feed: Number on Feed by Class, 1,000+ Capacity Feedlots,
by Quarter, State, and United States, 2004-2005**

State	Steers & Steer Calves			Heifers & Heifer Calves			Cows and Bulls		
	Apr 1, 2004	Jan 1, 2005	Apr 1, 2005	Apr 1, 2004	Jan 1, 2005	Apr 1, 2005	Apr 1, 2004	Jan 1, 2005	Apr 1, 2005
	<i>1,000 Head</i>	<i>1,000 Head</i>	<i>1,000 Head</i>	<i>1,000 Head</i>	<i>1,000 Head</i>	<i>1,000 Head</i>	<i>1,000 Head</i>	<i>1,000 Head</i>	<i>1,000 Head</i>
AZ	289	323	317	4	7	6	0	1	0
CA	465	495	480	30	40	20	0	0	0
CO	575	665	620	390	410	390	5	5	10
ID	160	184	149	95	111	91	0	0	0
IA	260	305	300	154	144	154	1	1	1
KS	1,230	1,310	1,320	1,110	1,080	995	20	20	25
NE	1,300	1,390	1,410	890	890	835	20	20	15
NM	49	80	71	56	46	42	0	0	0
OK	200	225	215	129	125	106	1	0	4
SD	112	98	110	81	74	83	12	20	12
TX	1,670	1,750	1,680	967	947	936	3	3	4
WA	115	110	92	70	79	63	0	1	4
Oth Sts	205	*240	225	90	93	82	5	7	3
US	6,630	*7,175	6,989	4,066	4,046	3,803	67	78	78

* Revised.

Terms and Definitions of Cattle on Feed Estimates

Cattle on feed are animals being fed a ration of grain, silage, hay and/or protein supplement for slaughter market that are expected to produce a carcass that will grade select or better. It excludes cattle being "backgrounded only" for later sale as feeders or later placement in another feedlot.

Placements are cattle put into a feedlot, fed a ration which will produce a carcass that will grade select or better, and are intended for the slaughter market.

Marketings are cattle shipped out of feedlots to a slaughter market.

Other disappearance includes death loss, movement from feedlots to pasture, and shipments to other feedlots for further feeding.

Reliability of Cattle on Feed Estimates

Survey Procedures: During January and July all known feedlots in the U.S. with capacity of 1,000 or more head are surveyed to provide data for cattle on feed estimates. During the other months, all known feedlots from 17 States are surveyed. The 17 States account for 98 percent of the cattle on feed.

Estimating Procedures: These cattle on feed estimates were prepared by the Agricultural Statistics Board after reviewing recommendations and analysis submitted by each State office. Regional and State survey data were reviewed for reasonableness with each other and with estimates from the previous month when setting the current estimates.

Revision Policy: Revisions to previous estimates are made to improve month to month relationships. Estimates for the previous month are subject to revision in all States each month when current estimates are made. In February, all monthly estimates for the previous year, and the number of feedlots and annual marketings from two years ago are reviewed and subject to revisions. The reviews are primarily based on slaughter data, state check-off or brand data, and any other data that may have been received after the original estimate was made. Estimates will also be reviewed after data from the Census of Agriculture are available. No revisions will be made after that date and estimates become final.

Reliability: Since all 1,000+ capacity cattle on feed operators in every State are not included in the monthly survey, survey estimates are subject to sampling variability. Survey results are also subject to non-sampling errors such as omissions, duplications, and mistakes in reporting, recording, and processing the data. The effects of these errors cannot be measured directly. They are minimized through rigid quality controls in the data collection process and through a careful review of all reported data for consistency and reasonableness.

ACCESS TO REPORTS!!

For your convenience, there are several ways to obtain NASS reports, data products, and services:

INTERNET ACCESS

All NASS reports are available free of charge on the worldwide Internet. For access, connect to the Internet and go to the NASS Home Page at: www.usda.gov/nass/. Select "Today's Reports" or Publications and then Reports Calendar or Publications and then Search, by Title or Subject.

E-MAIL SUBSCRIPTION

All NASS reports are available by subscription free of charge direct to your e-mail address. Starting with the NASS Home Page at www.usda.gov/nass/, click on **Publications**, then click on the **Subscribe by E-mail** button which takes you to the page describing e-mail delivery of reports. Finally, click on **Go to the Subscription Page** and follow the instructions.

PRINTED REPORTS OR DATA PRODUCTS

CALL OUR TOLL-FREE ORDER DESK: 800-999-6779 (U.S. and Canada)
Other areas, please call 703-605-6220 FAX: 703-605-6900
(Visa, MasterCard, check, or money order acceptable for payment.)

ASSISTANCE

For **assistance** with general agricultural statistics or further information about NASS or its products or services, contact the **Agricultural Statistics Hotline** at **800-727-9540**, 7:30 a.m. to 4:00 p.m. ET, or e-mail: nass@nass.usda.gov.

The U.S. Department of Agriculture (USDA) prohibits discrimination in all its programs and activities on the basis of race, color, national origin, sex, religion, age, disability, political beliefs, sexual orientation, and marital or family status. (Not all prohibited bases apply to all programs.) Persons with disabilities who require alternative means for communication of program information (Braille, large print, audiotape, etc.) should contact USDA's TARGET Center at 202-720-2600 (voice and TDD).

To file a complaint of discrimination, write USDA, Director, Office of Civil Rights, Room 326-W, Whitten Building, 14th and Independence Avenue, SW, Washington, DC 20250-9410 or call 202-720-5964 (voice and TDD). USDA is an equal opportunity provider and employer.