



Cattle On Feed

Released May 20, 2005, by the National Agricultural Statistics Service (NASS), Agricultural Statistics Board, U.S. Department of Agriculture. For information on *Cattle on Feed* call Mike Miller at (202) 720-3040, office hours 7:30 a.m. to 4:00 p.m. ET.

U.S. Cattle on Feed Up 3 Percent

Cattle and calves on feed for slaughter market in the United States for feedlots with capacity of 1,000 or more head totaled 10.6 million head on May 1, 2005. The inventory was 3 percent above May 1, 2004 and 1 percent above May 1, 2003.

Placements in feedlots during April totaled 1.66 million, 4 percent above 2004 but 11 percent below 2003. Net placements were 1.57 million. During April, placements of cattle and calves weighing less than 600 pounds were 340,000, 600-699 pounds were 225,000, 700-799 pounds were 500,000, and 800 pounds and greater were 595,000.

Marketings of fed cattle during April totaled 1.80 million, 5 percent below 2004 and 9 percent below 2003. This is the lowest fed cattle marketings for the month of April since the series began in 1996.

Other disappearance totaled 90,000 during April, 7 percent below 2004 but 43 percent above 2003.

**Cattle on Feed: Number on Feed, Placements, Marketings, and
Other Disappearance, 1,000+ Capacity Feedlots,
United States, May 1, 2003-2005**

Item	Number			2005 as % of	
	2003	2004	2005	2003	2004
	<i>1,000 Head</i>	<i>1,000 Head</i>	<i>1,000 Head</i>	<i>Percent</i>	<i>Percent</i>
On Feed Apr 1 ¹	10,713	10,763	10,870	101	101
Placed on Feed During Apr	1,870	1,600	1,660	89	104
Fed Cattle Marketed During Apr	1,985	1,891	1,801	91	95
Other Disappearance During Apr ²	63	97	90	143	93
On Feed May 1 ¹	10,535	10,375	10,639	101	103

¹ Cattle and calves on feed are animals for slaughter market being fed a ration of grain or other concentrates and are expected to produce a carcass that will grade select or better.

² Includes death loss, movement from feedlots to pasture, and shipments to other feedlots for further feeding.

**Cattle on Feed: Number on Feed, Placements, Marketings, and
Other Disappearance, 1,000+ Capacity Feedlots,
United States, April 1, 2003-2005**

Item	Number			2005 as % of	
	2003	2004	2005	2003	2004
	<i>1,000 Head</i>	<i>1,000 Head</i>	<i>1,000 Head</i>	<i>Percent</i>	<i>Percent</i>
On Feed Mar 1 ¹	10,546	10,987	11,152	106	102
Placed on Feed During Mar	2,032	1,810	*1,750	86	97
Fed Cattle Marketed During Mar	1,803	1,967	*1,963	109	100
Other Disappearance During Mar ²	62	67	69	111	103
On Feed Apr 1 ¹	10,713	10,763	10,870	101	101

* Revised.

¹ Cattle and calves on feed are animals for slaughter market being fed a ration of grain or other concentrates and are expected to produce a carcass that will grade select or better.

² Includes death loss, movement from feedlots to pasture, and shipments to other feedlots for further feeding.

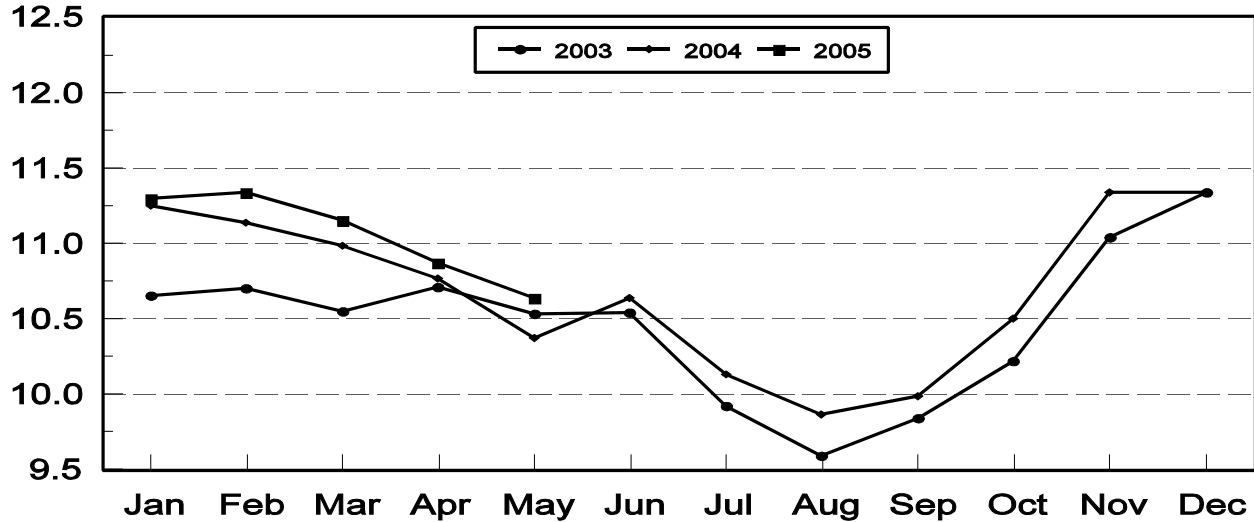
**Cattle on Feed: Number on Feed, 1,000+ Capacity Feedlots,
by Month, State, and United States 2004-2005 ¹**

State	May 1, 2004	Apr 1, 2005	May 1, 2005		
			Number	as % of 2004	as % of Apr
	<i>1,000 Head</i>	<i>1,000 Head</i>	<i>1,000 Head</i>	<i>Percent</i>	<i>Percent</i>
AZ	295	323	328	111	102
CA	500	500	500	100	100
CO	940	1,020	970	103	95
ID	250	240	240	96	100
IA	415	455	455	110	100
KS	2,240	2,340	2,260	101	97
NE	2,100	2,260	2,190	104	97
NM	105	113	114	109	101
OK	310	325	305	98	94
SD	200	205	200	100	98
TX	2,560	2,620	2,630	103	100
WA	175	159	147	84	92
Oth Sts	285	310	300	105	97
US	10,375	10,870	10,639	103	98

¹ Cattle and calves on feed are animals for slaughter market being fed a ration of grain or other concentrates and are expected to produce a carcass that will grade select or better.

**United States Cattle on Feed
1,000+ Capacity Feedlots**

Million Head



**Cattle on Feed: Number Placed on Feed, 1,000+ Capacity Feedlots,
by Month, State, and United States 2004-2005**

State	During Apr 2004	During Mar 2005	During Apr 2005		
			Number	as % of 2004	as % of Mar
	<i>1,000 Head</i>	<i>1,000 Head</i>	<i>1,000 Head</i>	<i>Percent</i>	<i>Percent</i>
AZ	31	27	31	100	115
CA	75	65	64	85	98
CO	150	*165	120	80	73
ID	45	44	39	87	89
IA	57	55	55	96	100
KS	355	445	375	106	84
NE	320	300	320	100	107
NM	14	13	19	136	146
OK	51	61	52	102	85
SD	26	31	27	104	87
TX	415	480	500	120	104
WA	26	22	19	73	86
Oth Sts	35	42	39	111	93
US	1,600	*1,750	1,660	104	95

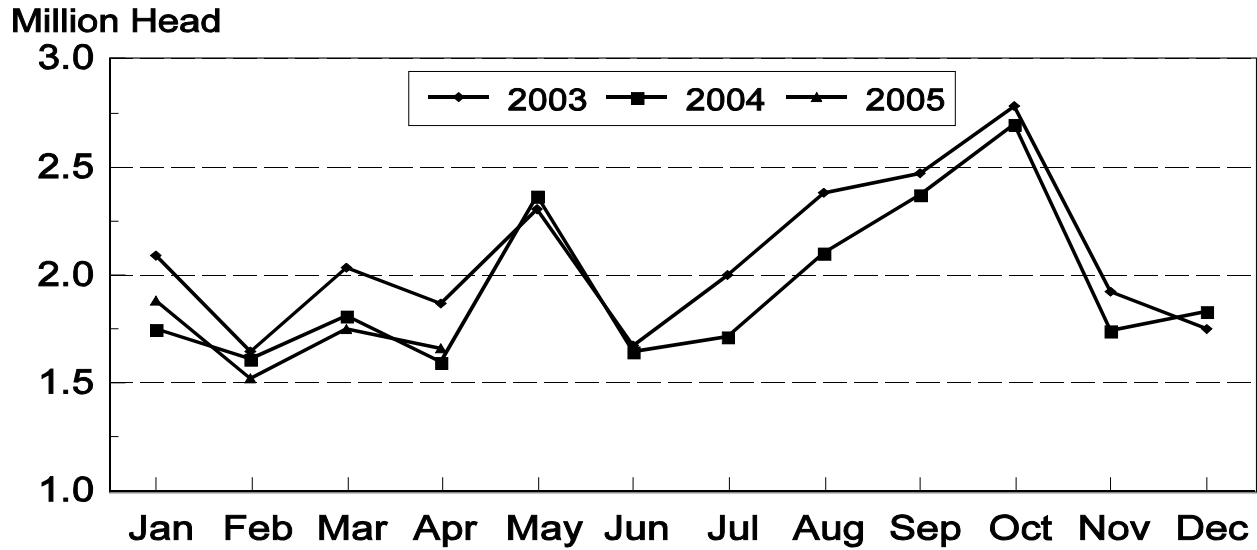
* Revised

**Cattle on Feed: Number Placed on Feed by Weight Group, 1,000+ Capacity
Feedlots, by Month, State, and United States, 2004-2005**

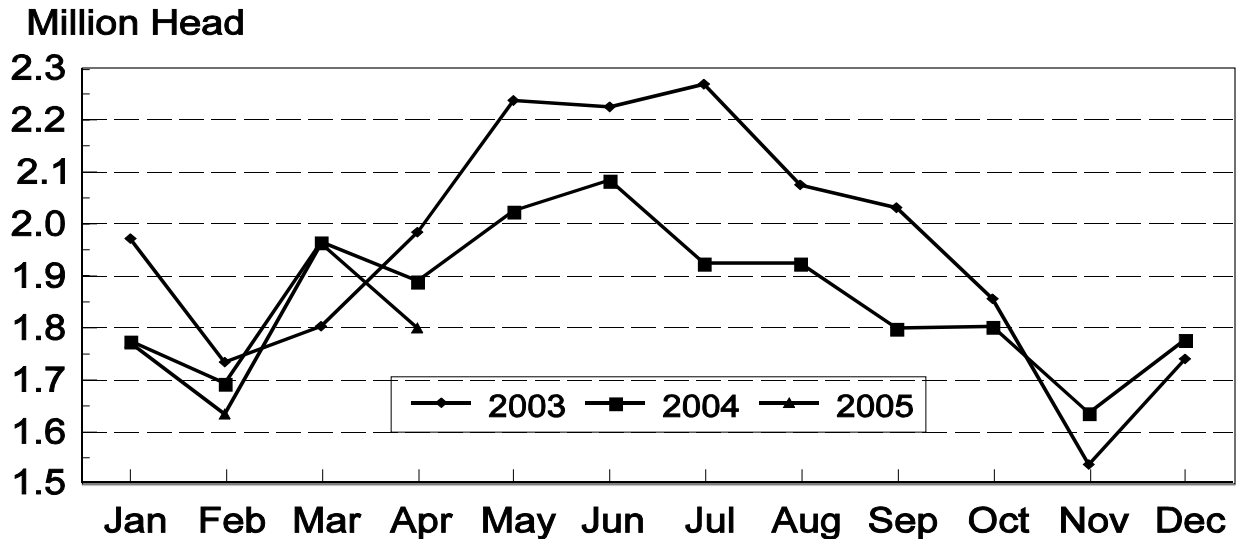
State	During April									
	Under 600		600-699		700-799		800 Plus		Total	
	2004	2005	2004	2005	2004	2005	2004	2005	2004	2005
	<i>1,000 Head</i>	<i>1,000 Head</i>	<i>1,000 Head</i>	<i>1,000 Head</i>	<i>1,000 Head</i>	<i>1,000 Head</i>	<i>1,000 Head</i>	<i>1,000 Head</i>	<i>1,000 Head</i>	<i>1,000 Head</i>
CO	15	20	37	20	61	35	37	45	150	120
KS	45	50	60	50	140	120	110	155	355	375
NE	50	45	52	40	105	105	113	130	320	320
TX	85	105	100	70	175	170	55	155	415	500
Oth Sts	120	120	55	45	85	70	100	110	360	345
US	315	340	304	225	566	500	415	595	1,600	1,660
	During March									
	Under 600		600-699		700-799		800 Plus		Total	
	2004	2005	2004	2005	2004	2005	2004	2005	2004	2005
	<i>1,000 Head</i>	<i>1,000 Head</i>	<i>1,000 Head</i>	<i>1,000 Head</i>	<i>1,000 Head</i>	<i>1,000 Head</i>	<i>1,000 Head</i>	<i>1,000 Head</i>	<i>1,000 Head</i>	<i>1,000 Head</i>
CO	15	15	30	35	60	*65	45	*50	150	*165
KS	55	50	95	85	195	170	115	140	460	445
NE	32	34	47	52	106	92	110	122	295	300
TX	120	85	120	105	180	190	70	100	490	480
Oth Sts	125	115	55	43	105	92	130	110	415	360
US	347	299	347	320	646	*609	470	*522	1,810	*1,750

* Revised

United States Cattle on Feed 1,000+ Capacity Feedlots Number Placed



United States Cattle on Feed 1,000+ Capacity Feedlots Number Marketed



**Cattle on Feed: Number Marketed, 1,000+ Capacity Feedlots,
by Month, State, and United States 2004-2005**

State	During Apr 2004	During Mar 2005	During Apr 2005		
			Number	as % of 2004	as % of Mar
	<i>1,000 Head</i>	<i>1,000 Head</i>	<i>1,000 Head</i>	<i>Percent</i>	<i>Percent</i>
AZ	27	24	24	89	100
CA	67	70	59	88	84
CO	170	*175	150	88	86
ID	47	53	37	79	70
IA	53	64	53	100	83
KS	440	460	425	97	92
NE	420	350	380	90	109
NM	11	23	16	145	70
OK	68	73	70	103	96
SD	28	34	31	111	91
TX	480	540	480	100	89
WA	35	47	30	86	64
Oth Sts	45	50	46	102	92
US	1,891	*1,963	1,801	95	92

* Revised.

**Cattle on Feed: Other Disappearance, 1,000+ Capacity Feedlots,
by Month, State, and United States 2004-2005 ¹**

State	During Apr 2004	During Mar 2005	During Apr 2005		
			Number	as % of 2004	as % of Mar
	<i>1,000 Head</i>	<i>1,000 Head</i>	<i>1,000 Head</i>	<i>Percent</i>	<i>Percent</i>
AZ	2	2	2	100	100
CA	3	10	5	167	50
CO	10	10	20	200	200
ID	3	1	2	67	200
IA	4	1	2	50	200
KS	35	15	30	86	200
NE	10	10	10	100	100
NM	3	2	2	67	100
OK	3	3	2	67	67
SD	3	2	1	33	50
TX	15	10	10	67	100
WA	1	1	1	100	100
Oth Sts	5	2	3	60	150
US	97	69	90	93	130

¹ Includes death loss, movement from feedlots to pasture, and shipments to other feedlots for further feeding.

Terms and Definitions of Cattle on Feed Estimates

Cattle on feed are animals being fed a ration of grain, silage, hay and/or protein supplement for slaughter market that are expected to produce a carcass that will grade select or better. It excludes cattle being "backgrounded only" for later sale as feeders or later placement in another feedlot.

Placements are cattle put into a feedlot, fed a ration which will produce a carcass that will grade select or better, and are intended for the slaughter market.

Marketings are cattle shipped out of feedlots to a slaughter market.

Other disappearance includes death loss, movement from feedlots to pasture, and shipments to other feedlots for further feeding.

Reliability of Cattle on Feed Estimates

Survey Procedures: During January and July all known feedlots in the U.S. with capacity of 1,000 or more head are surveyed to provide data for cattle on feed estimates. During the other months, all known feedlots from 17 States are surveyed. The 17 States account for 98 percent of the cattle on feed in feedlots with capacity of 1,000 or more head.

Estimating Procedures: These cattle on feed estimates were prepared by the Agricultural Statistics Board after reviewing recommendations and analysis submitted by each State office. Regional and State survey data were reviewed for reasonableness with each other and with estimates from the previous month when setting the current estimates.

Revision Policy: Revisions to previous estimates are made to improve month to month relationships. Estimates for the previous month are subject to revision in all States each month when current estimates are made. In February, all monthly estimates for the previous year, and the number of feedlots and annual marketings from two years ago are reviewed and subject to revisions. The reviews are primarily based on slaughter data, state check-off or brand data, and any other data that may have been received after the original estimate was made. Estimates will also be reviewed after data from the Census of Agriculture are available. No revisions will be made after that date and estimates become final.

Reliability: Since all 1000+ capacity cattle on feed operators in every State are not included in the monthly survey, survey estimates are subject to sampling variability. Survey results are also subject to non-sampling errors such as omissions, duplications, and mistakes in reporting, recording, and processing the data. The effects of these errors cannot be measured directly. They are minimized through rigid quality controls in the data collection process and through a careful review of all reported data for consistency and reasonableness.

ACCESS TO REPORTS!!

For your convenience, there are several ways to obtain NASS reports, data products, and services:

INTERNET ACCESS

All NASS reports are available free of charge on the worldwide Internet. For access, connect to the Internet and go to the NASS Home Page at: www.usda.gov/nass/. Select "Today's Reports" or Publications and then Reports Calendar or Publications and then Search, by Title or Subject.

E-MAIL SUBSCRIPTION

All NASS reports are available by subscription free of charge direct to your e-mail address. Starting with the NASS Home Page at www.usda.gov/nass/, click on **Publications**, then click on the **Subscribe by E-mail** button which takes you to the page describing e-mail delivery of reports. Finally, click on **Go to the Subscription Page** and follow the instructions.

PRINTED REPORTS OR DATA PRODUCTS

CALL OUR TOLL-FREE ORDER DESK: 800-999-6779 (U.S. and Canada)
Other areas, please call 703-605-6220 FAX: 703-605-6900
(Visa, MasterCard, check, or money order acceptable for payment.)

ASSISTANCE

For **assistance** with general agricultural statistics or further information about NASS or its products or services, contact the **Agricultural Statistics Hotline** at **800-727-9540**, 7:30 a.m. to 4:00 p.m. ET, or e-mail: nass@nass.usda.gov.

The U.S. Department of Agriculture (USDA) prohibits discrimination in all its programs and activities on the basis of race, color, national origin, sex, religion, age, disability, political beliefs, sexual orientation, and marital or family status. (Not all prohibited bases apply to all programs.) Persons with disabilities who require alternative means for communication of program information (Braille, large print, audiotape, etc.) should contact USDA's TARGET Center at 202-720-2600 (voice and TDD).

To file a complaint of discrimination, write USDA, Director, Office of Civil Rights, Room 326-W, Whitten Building, 14th and Independence Avenue, SW, Washington, DC 20250-9410 or call 202-720-5964 (voice and TDD). USDA is an equal opportunity provider and employer.