



# Cattle On Feed

---

Released June 17, 2005, by the National Agricultural Statistics Service (NASS), Agricultural Statistics Board, U.S. Department of Agriculture. For information on *Cattle on Feed* call Mike Miller at (202) 720-3040, office hours 7:30 a.m. to 4:00 p.m. ET.

## U.S. Cattle on Feed Up 1 Percent

**Cattle and calves on feed** for slaughter market in the United States for feedlots with capacity of 1,000 or more head totaled 10.77 million head on June 1, 2005. The inventory was 1 percent above June 1, 2004 and 2 percent above June 1, 2003.

**Placements** in feedlots during May totaled 2.22 million, 6 percent below 2004 and 4 percent below 2003. Net placements were 2.13 million. During May, placements of cattle and calves weighing less than 600 pounds were 435,000, 600-699 pounds were 390,000, 700-799 pounds were 663,000, and 800 pounds and greater were 735,000.

**Marketings** of fed cattle during May totaled 2.0 million, 1 percent below 2004 and 11 percent below 2003.

**Other disappearance** totaled 96,000 during May, 22 percent above 2004 and 48 percent above 2003.

**Cattle on Feed: Number on Feed, Placements, Marketings, and  
Other Disappearance, 1,000+ Capacity Feedlots,  
United States, June 1, 2003-2005**

Item	Number			2005 as % of	
	2003	2004	2005	2003	2004
	<i>1,000 Head</i>	<i>1,000 Head</i>	<i>1,000 Head</i>	<i>Percent</i>	<i>Percent</i>
On Feed May 1 <sup>1</sup>	10,535	10,375	10,639	101	103
Placed on Feed During May	2,307	2,370	2,223	96	94
Fed Cattle Marketed During May	2,238	2,026	1,997	89	99
Other Disappearance During May <sup>2</sup>	65	79	96	148	122
On Feed Jun 1 <sup>1</sup>	10,539	10,640	10,769	102	101

<sup>1</sup> Cattle and calves on feed are animals for slaughter market being fed a ration of grain or other concentrates and are expected to produce a carcass that will grade select or better.

<sup>2</sup> Includes death loss, movement from feedlots to pasture, and shipments to other feedlots for further feeding.

**Cattle on Feed: Number on Feed, Placements, Marketings, and  
Other Disappearance, 1,000+ Capacity Feedlots,  
United States, May 1, 2003-2005**

Item	Number			2005 as % of	
	2003	2004	2005	2003	2004
	<i>1,000 Head</i>	<i>1,000 Head</i>	<i>1,000 Head</i>	<i>Percent</i>	<i>Percent</i>
On Feed Apr 1 <sup>1</sup>	10,713	10,763	10,870	101	101
Placed on Feed During Apr	1,870	1,600	1,660	89	104
Fed Cattle Marketed During Apr	1,985	1,891	1,801	91	95
Other Disappearance During Apr <sup>2</sup>	63	97	90	143	93
On Feed May 1 <sup>1</sup>	10,535	10,375	10,639	101	103

<sup>1</sup> Cattle and calves on feed are animals for slaughter market being fed a ration of grain or other concentrates and are expected to produce a carcass that will grade select or better.

<sup>2</sup> Includes death loss, movement from feedlots to pasture, and shipments to other feedlots for further feeding.

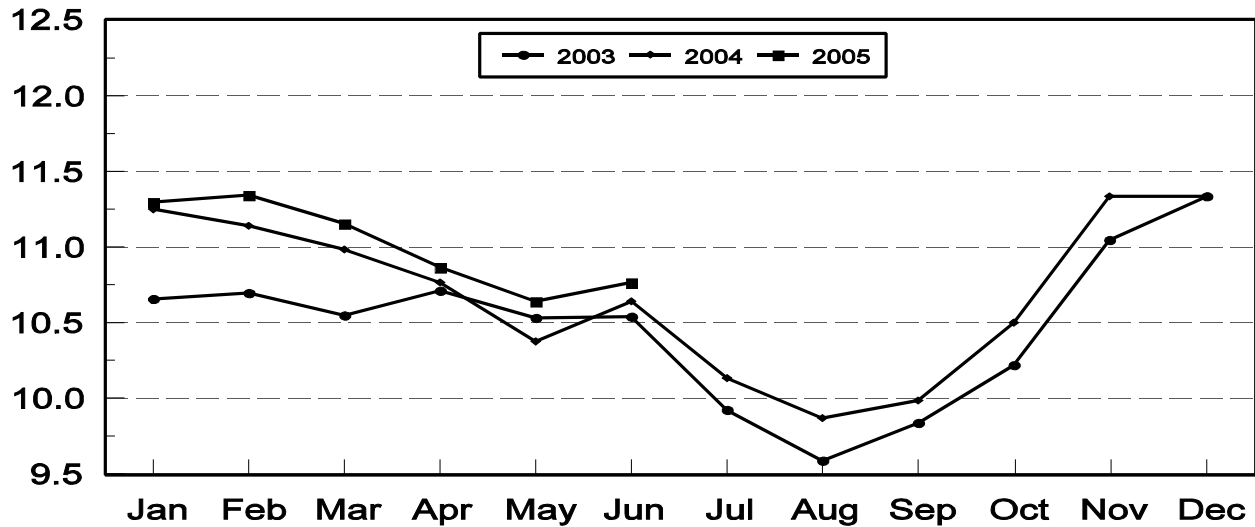
**Cattle on Feed: Number on Feed, 1,000+ Capacity Feedlots,  
by Month, State, and United States 2004-2005 <sup>1</sup>**

State	Jun 1, 2004	May 1, 2005	Jun 1, 2005		
			Number	as % of 2004	as % of May
	<i>1,000 Head</i>	<i>1,000 Head</i>	<i>1,000 Head</i>	<i>Percent</i>	<i>Percent</i>
AZ	294	328	329	112	100
CA	520	500	515	99	103
CO	1,010	970	970	96	100
ID	255	240	245	96	102
IA	400	455	435	109	96
KS	2,250	2,260	2,280	101	101
NE	2,010	2,190	2,050	102	94
NM	118	114	127	108	111
OK	330	305	325	98	107
SD	188	200	186	99	93
TX	2,810	2,630	2,890	103	110
WA	170	147	137	81	93
Oth Sts	285	300	280	98	93
US	10,640	10,639	10,769	101	101

<sup>1</sup> Cattle and calves on feed are animals for slaughter market being fed a ration of grain or other concentrates and are expected to produce a carcass that will grade select or better.

**United States Cattle on Feed  
1,000+ Capacity Feedlots**

Million Head



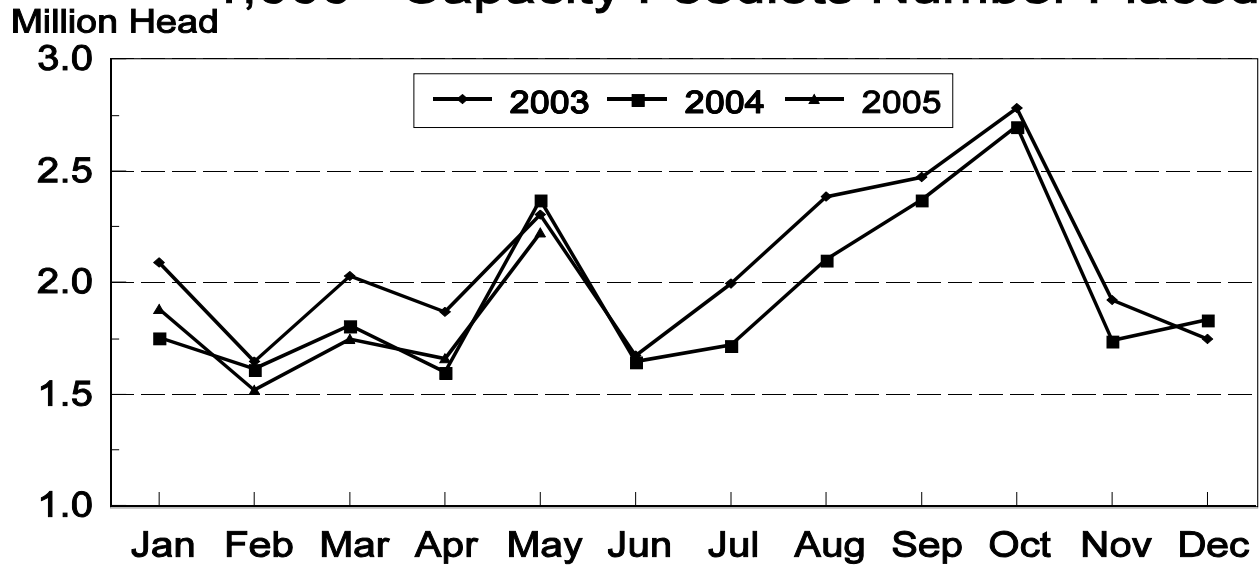
**Cattle on Feed: Number Placed on Feed, 1,000+ Capacity Feedlots,  
by Month, State, and United States 2004-2005**

State	During May 2004	During Apr 2005	During May 2005		
			Number	as % of 2004	as % of Apr
	<i>1,000 Head</i>	<i>1,000 Head</i>	<i>1,000 Head</i>	<i>Percent</i>	<i>Percent</i>
AZ	29	31	32	110	103
CA	91	64	82	90	128
CO	270	120	165	61	138
ID	74	39	61	82	156
IA	50	55	55	110	100
KS	495	375	510	103	136
NE	390	320	360	92	113
NM	27	19	30	111	158
OK	92	52	86	93	165
SD	28	27	28	100	104
TX	740	500	750	101	150
WA	38	19	26	68	137
Oth Sts	46	39	38	83	97
US	2,370	1,660	2,223	94	134

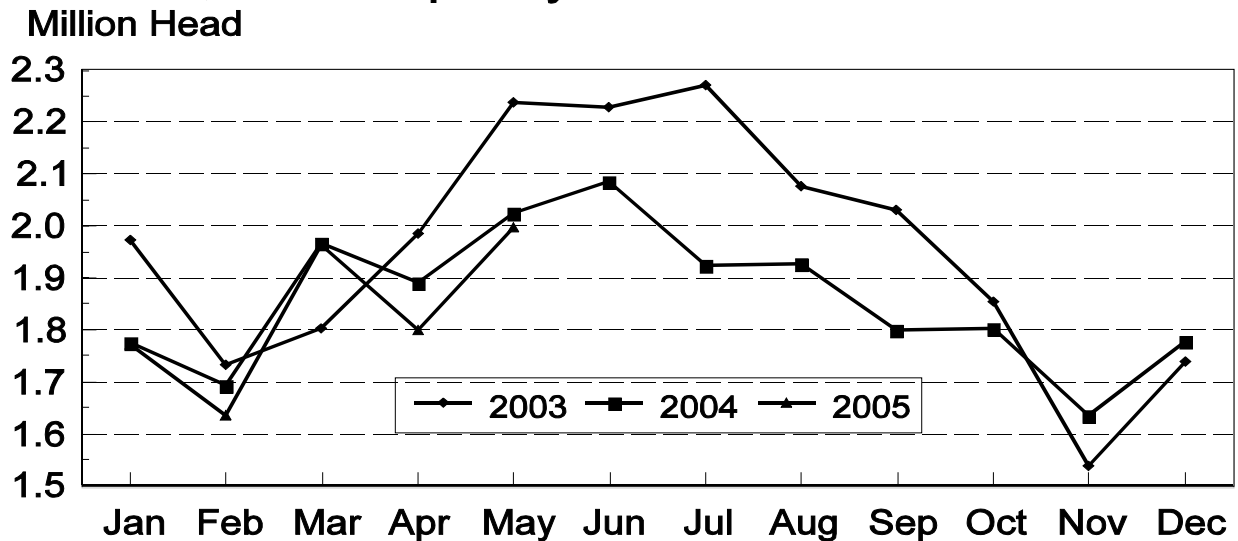
**Cattle on Feed: Number Placed on Feed by Weight Group, 1,000+ Capacity  
Feedlots, by Month, State, and United States, 2004-2005**

State	During May									
	Under 600		600-699		700-799		800 Plus		Total	
	2004	2005	2004	2005	2004	2005	2004	2005	2004	2005
	<i>1,000 Head</i>	<i>1,000 Head</i>	<i>1,000 Head</i>	<i>1,000 Head</i>	<i>1,000 Head</i>	<i>1,000 Head</i>	<i>1,000 Head</i>	<i>1,000 Head</i>	<i>1,000 Head</i>	<i>1,000 Head</i>
CO	46	20	73	30	103	60	48	55	270	165
KS	65	60	95	95	195	160	140	195	495	510
NE	54	45	60	45	134	110	142	160	390	360
TX	190	165	185	160	225	240	140	185	740	750
Oth Sts	140	145	80	60	115	93	140	140	475	438
US	495	435	493	390	772	663	610	735	2,370	2,223
	During April									
	Under 600		600-699		700-799		800 Plus		Total	
	2004	2005	2004	2005	2004	2005	2004	2005	2004	2005
	<i>1,000 Head</i>	<i>1,000 Head</i>	<i>1,000 Head</i>	<i>1,000 Head</i>	<i>1,000 Head</i>	<i>1,000 Head</i>	<i>1,000 Head</i>	<i>1,000 Head</i>	<i>1,000 Head</i>	<i>1,000 Head</i>
CO	15	20	37	20	61	35	37	45	150	120
KS	45	50	60	50	140	120	110	155	355	375
NE	50	45	52	40	105	105	113	130	320	320
TX	85	105	100	70	175	170	55	155	415	500
Oth Sts	120	120	55	45	85	70	100	110	360	345
US	315	340	304	225	566	500	415	595	1,600	1,660

## United States Cattle on Feed 1,000+ Capacity Feedlots Number Placed



## United States Cattle on Feed 1,000+ Capacity Feedlots Number Marketed



**Cattle on Feed: Number Marketed, 1,000+ Capacity Feedlots,  
by Month, State, and United States 2004-2005**

State	During May 2004	During Apr 2005	During May 2005		
			Number	as % of 2004	as % of Apr
	<i>1,000 Head</i>	<i>1,000 Head</i>	<i>1,000 Head</i>	<i>Percent</i>	<i>Percent</i>
AZ	28	24	29	104	121
CA	63	59	62	98	105
CO	185	150	150	81	100
ID	67	37	54	81	146
IA	63	53	73	116	138
KS	465	425	465	100	109
NE	470	380	480	102	126
NM	12	16	16	133	100
OK	70	70	64	91	91
SD	37	31	38	103	123
TX	480	480	480	100	100
WA	42	30	34	81	113
Oth Sts	44	46	52	118	113
US	2,026	1,801	1,997	99	111

**Cattle on Feed: Other Disappearance, 1,000+ Capacity Feedlots,  
by Month, State, and United States 2004-2005 <sup>1</sup>**

State	During May 2004	During Apr 2005	During May 2005		
			Number	as % of 2004	as % of Apr
	<i>1,000 Head</i>	<i>1,000 Head</i>	<i>1,000 Head</i>	<i>Percent</i>	<i>Percent</i>
AZ	2	2	2	100	100
CA	8	5	5	63	100
CO	15	20	15	100	75
ID	2	2	2	100	100
IA	2	2	2	100	100
KS	20	30	25	125	83
NE	10	10	20	200	200
NM	2	2	1	50	50
OK	2	2	2	100	100
SD	3	1	4	133	400
TX	10	10	10	100	100
WA	1	1	2	200	200
Oth Sts	2	3	6	300	200
US	79	90	96	122	107

<sup>1</sup> Includes death loss, movement from feedlots to pasture, and shipments to other feedlots for further feeding.

## Terms and Definitions of Cattle on Feed Estimates

**Cattle on feed** are animals being fed a ration of grain, silage, hay and/or protein supplement for slaughter market that are expected to produce a carcass that will grade select or better. It excludes cattle being "backgrounded only" for later sale as feeders or later placement in another feedlot.

**Placements** are cattle put into a feedlot, fed a ration which will produce a carcass that will grade select or better, and are intended for the slaughter market.

**Marketings** are cattle shipped out of feedlots to a slaughter market.

**Other disappearance** includes death loss, movement from feedlots to pasture, and shipments to other feedlots for further feeding.

## Reliability of Cattle on Feed Estimates

**Survey Procedures:** During January and July all known feedlots in the U.S. with capacity of 1,000 or more head are surveyed to provide data for cattle on feed estimates. During the other months, all known feedlots from 17 States are surveyed. The 17 States account for 98 percent of the cattle on feed in feedlots with capacity of 1,000 or more head.

**Estimating Procedures:** These cattle on feed estimates were prepared by the Agricultural Statistics Board after reviewing recommendations and analysis submitted by each State office. Regional and State survey data were reviewed for reasonableness with each other and with estimates from the previous month when setting the current estimates.

**Revision Policy:** Revisions to previous estimates are made to improve month to month relationships. Estimates for the previous month are subject to revision in all States each month when current estimates are made. In February, all monthly estimates for the previous year, and the number of feedlots and annual marketings from two years ago are reviewed and subject to revisions. The reviews are primarily based on slaughter data, state check-off or brand data, and any other data that may have been received after the original estimate was made. Estimates will also be reviewed after data from the Census of Agriculture are available. No revisions will be made after that date and estimates become final.

**Reliability:** Since all 1000+ capacity cattle on feed operators in every State are not included in the monthly survey, survey estimates are subject to sampling variability. Survey results are also subject to non-sampling errors such as omissions, duplications, and mistakes in reporting, recording, and processing the data. The effects of these errors cannot be measured directly. They are minimized through rigid quality controls in the data collection process and through a careful review of all reported data for consistency and reasonableness.

## ACCESS TO REPORTS!!

---

For your convenience, there are several ways to obtain NASS reports, data products, and services:

### INTERNET ACCESS

All NASS reports are available free of charge on the worldwide Internet. For access, connect to the Internet and go to the NASS Home Page at: [www.usda.gov/nass/](http://www.usda.gov/nass/). Select "Today's Reports" or Publications and then Reports Calendar or Publications and then Search, by Title or Subject.

### E-MAIL SUBSCRIPTION

All NASS reports are available by subscription free of charge direct to your e-mail address. Starting with the NASS Home Page at [www.usda.gov/nass/](http://www.usda.gov/nass/), click on **Publications**, then click on the **Subscribe by E-mail** button which takes you to the page describing e-mail delivery of reports. Finally, click on **Go to the Subscription Page** and follow the instructions.

-----

### PRINTED REPORTS OR DATA PRODUCTS

**CALL OUR TOLL-FREE ORDER DESK: 800-999-6779 (U.S. and Canada)**  
**Other areas, please call 703-605-6220      FAX: 703-605-6900**  
**(Visa, MasterCard, check, or money order acceptable for payment.)**

-----

### ASSISTANCE

For **assistance** with general agricultural statistics or further information about NASS or its products or services, contact the **Agricultural Statistics Hotline** at **800-727-9540**, 7:30 a.m. to 4:00 p.m. ET, or e-mail: [nass@nass.usda.gov](mailto:nass@nass.usda.gov).

The U.S. Department of Agriculture (USDA) prohibits discrimination in all its programs and activities on the basis of race, color, national origin, sex, religion, age, disability, political beliefs, sexual orientation, and marital or family status. (Not all prohibited bases apply to all programs.) Persons with disabilities who require alternative means for communication of program information (Braille, large print, audiotape, etc.) should contact USDA's TARGET Center at 202-720-2600 (voice and TDD).

To file a complaint of discrimination, write USDA, Director, Office of Civil Rights, Room 326-W, Whitten Building, 14th and Independence Avenue, SW, Washington, DC 20250-9410 or call 202-720-5964 (voice and TDD). USDA is an equal opportunity provider and employer.