



Cattle On Feed

Released July 22, 2005, by the National Agricultural Statistics Service (NASS), Agricultural Statistics Board, U.S. Department of Agriculture. For information on *Cattle on Feed* call Mike Miller at (202) 720-3040, office hours 7:30 a.m. to 4:00 p.m. ET.

U.S. Cattle on Feed Up 3 Percent

Cattle and calves on feed for slaughter market in the United States for feedlots with capacity of 1,000 or more head totaled 10.4 million head on July 1, 2005. The inventory was 3 percent above July 1, 2004 and 5 percent above July 1, 2003. The inventory included 6.81 million steers and steer calves, up 7 percent from the previous year. This group accounted for 65 percent of the total inventory. Heifers and heifer calves accounted for 3.53 million head, down 5 percent from 2004.

Placements in feedlots during June totaled 1.77 million, 7 percent above 2004 and 6 percent above 2003. Net placements were 1.71 million. During June, placements of cattle and calves weighing less than 600 pounds were 412,000, 600-699 pounds were 347,000, 700-799 pounds were 480,000, and 800 pounds and greater were 530,000.

Marketings of fed cattle during June totaled 2.07 million, 1 percent below 2004 and 7 percent below 2003.

Other disappearance totaled 63,000 during June, 10 percent below 2004 but 3 percent above 2003.

U.S. All Cattle on Feed Up 2 Percent

Cattle on feed July 1, 2005, from all feedlots in the United States, totaled 12.0 million, up 2 percent from the 11.8 million on July 1, 2004 and up 2 percent from July 1, 2003. Cattle on feed in feedlots with 1,000 or more head accounted for 87 percent of the total cattle on feed on July 1, 2005, up from 86 percent on July 1, 2004.

**Cattle on Feed: Number on Feed, Placements, Marketings, and
Other Disappearance, 1,000+ Capacity Feedlots,
United States, July 1, 2003-2005**

Item	Number			2005 as % of	
	2003	2004	2005	2003	2004
	<i>1,000 Head</i>	<i>1,000 Head</i>	<i>1,000 Head</i>	<i>Percent</i>	<i>Percent</i>
On Feed Jun 1 ¹	10,539	10,640	10,769	102	101
Placed on Feed During Jun	1,672	1,647	1,769	106	107
Fed Cattle Marketed During Jun	2,227	2,085	2,073	93	99
Other Disappearance During Jun ²	61	70	63	103	90
On Feed Jul 1 ¹	9,923	10,132	10,402	105	103

¹ Cattle and calves on feed are animals for slaughter market being fed a ration of grain or other concentrates and are expected to produce a carcass that will grade select or better.

² Includes death loss, movement from feedlots to pasture, and shipments to other feedlots for further feeding.

**Cattle on Feed: Number on Feed, Placements, Marketings, and
Other Disappearance, 1,000+ Capacity Feedlots,
United States, June 1, 2003-2005**

Item	Number			2005 as % of	
	2003	2004	2005	2003	2004
	<i>1,000 Head</i>	<i>1,000 Head</i>	<i>1,000 Head</i>	<i>Percent</i>	<i>Percent</i>
On Feed May 1 ¹	10,535	10,375	10,639	101	103
Placed on Feed During May	2,307	2,370	2,223	96	94
Fed Cattle Marketed During May	2,238	2,026	1,997	89	99
Other Disappearance During May ²	65	79	96	148	122
On Feed Jun 1 ¹	10,539	10,640	10,769	102	101

¹ Cattle and calves on feed are animals for slaughter market being fed a ration of grain or other concentrates and are expected to produce a carcass that will grade select or better.

² Includes death loss, movement from feedlots to pasture, and shipments to other feedlots for further feeding.

**Cattle on Feed: Number on Feed by Class, 1,000+ Capacity Feedlots,
United States, July 1, 2003-2005**

Item	Number			2005 as % of	
	2003	2004	2005	2003	2004
	<i>1,000 Head</i>	<i>1,000 Head</i>	<i>1,000 Head</i>	<i>Percent</i>	<i>Percent</i>
Class on Feed Jul 1					
Steers and Steer Calves	6,111	6,379	6,805	111	107
Heifers and Heifer Calves	3,751	3,701	3,532	94	95
Cows and Bulls	61	52	65	107	125

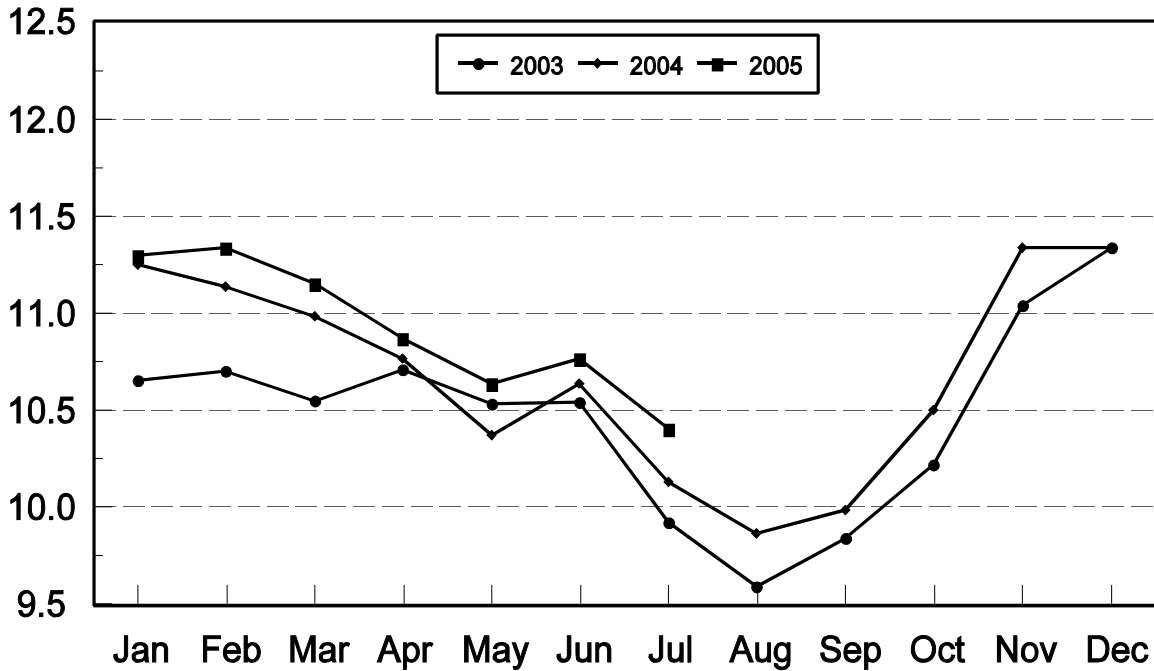
**Cattle on Feed: Number on Feed, 1,000+ Capacity Feedlots,
by Month, State, and United States 2004-2005 ¹**

State	Jul 1, 2004	Jun 1, 2005	Jul 1, 2005		
			Number	as % of 2004	as % of Jun
	<i>1,000 Head</i>	<i>1,000 Head</i>	<i>1,000 Head</i>	<i>Percent</i>	<i>Percent</i>
AZ	295	329	322	109	98
CA	520	515	520	100	101
CO	940	970	910	97	94
ID	240	245	260	108	106
IA	390	435	415	106	95
KS	2,090	2,280	2,200	105	96
NE	1,850	2,050	1,820	98	89
NM	124	127	132	106	104
OK	315	325	320	102	98
SD	173	186	161	93	87
TX	2,760	2,890	2,950	107	102
WA	165	137	142	86	104
Oth Sts	270	280	250	93	89
US	10,132	10,769	10,402	103	97

¹ Cattle and calves on feed are animals for slaughter market being fed a ration of grain or other concentrates and are expected to produce a carcass that will grade select or better.

United States Cattle on Feed 1,000+ Capacity Feedlots

Million Head



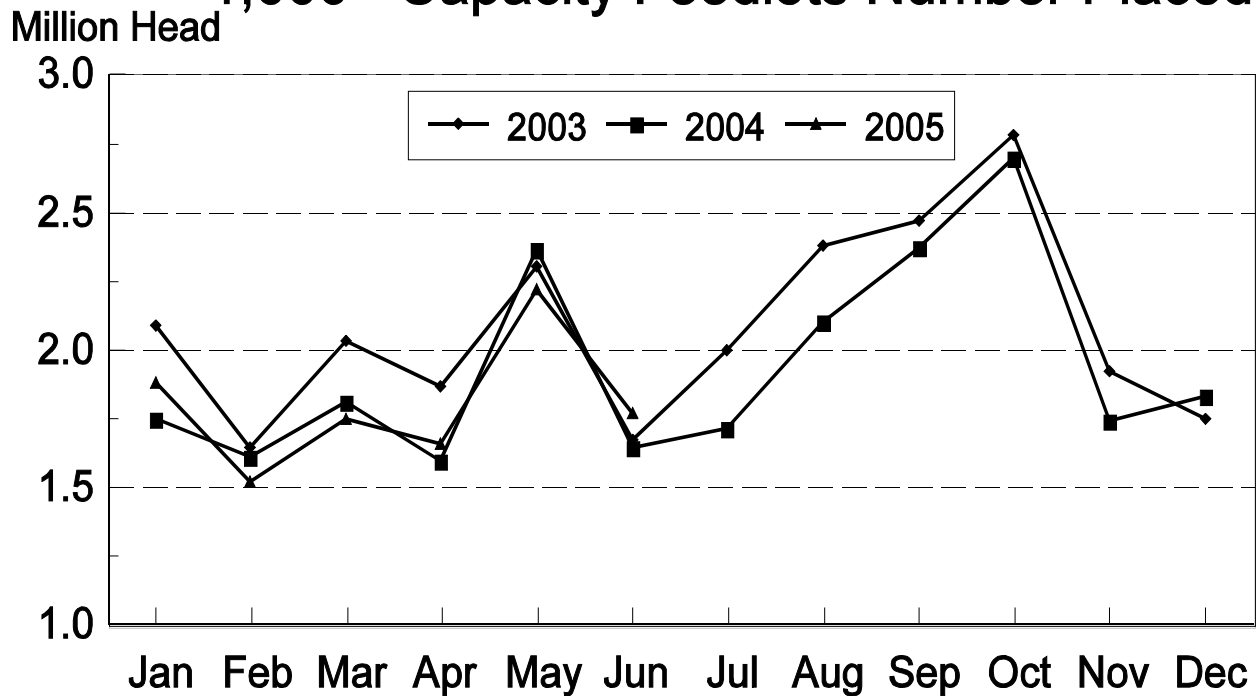
**Cattle on Feed: Number Placed on Feed, 1,000+ Capacity Feedlots,
by Month, State, and United States 2004-2005**

State	During Jun 2004	During May 2005	During Jun 2005		
			Number	as % of 2004	as % of May
	<i>1,000 Head</i>	<i>1,000 Head</i>	<i>1,000 Head</i>	<i>Percent</i>	<i>Percent</i>
AZ	31	32	29	94	91
CA	69	82	73	106	89
CO	145	165	130	90	79
ID	47	61	70	149	115
IA	50	55	49	98	89
KS	400	510	400	100	78
NE	285	360	290	102	81
NM	26	30	26	100	87
OK	52	86	54	104	63
SD	20	28	26	130	93
TX	455	750	550	121	73
WA	37	26	41	111	158
Oth Sts	30	38	31	103	82
US	1,647	2,223	1,769	107	80

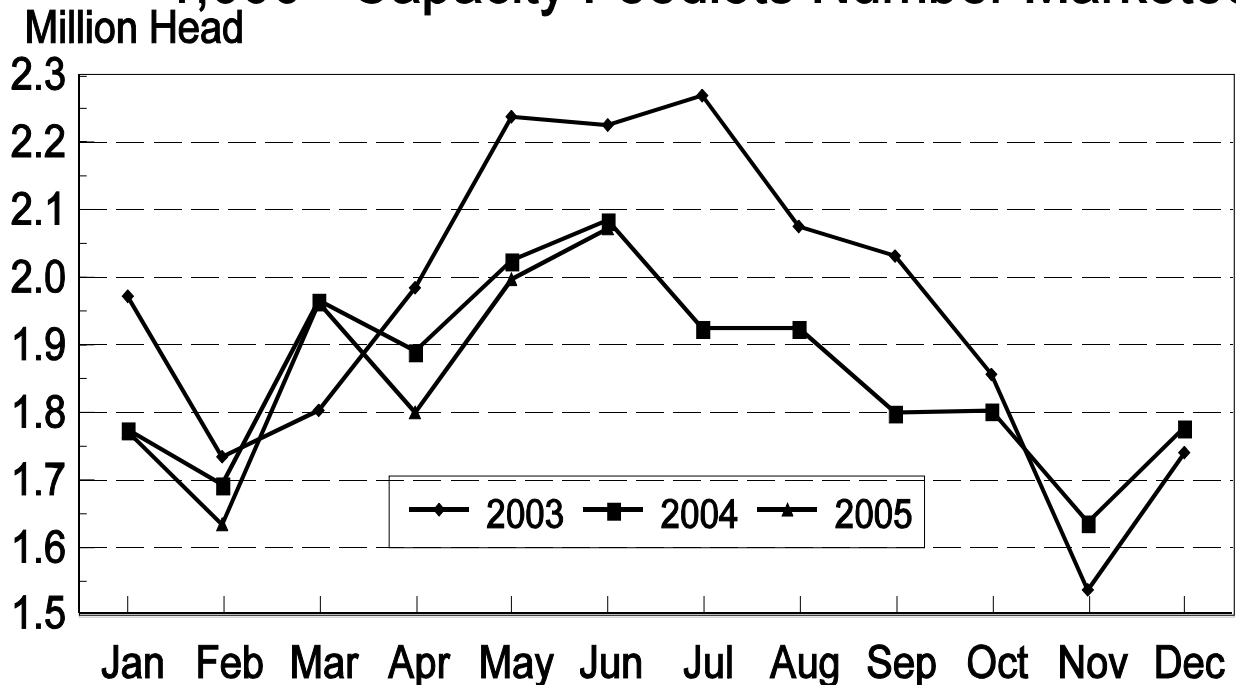
**Cattle on Feed: Number Placed on Feed by Weight Group, 1,000+ Capacity
Feedlots, by Month, State, and United States, 2004-2005**

State	During June									
	Under 600		600-699		700-799		800 Plus		Total	
	2004	2005	2004	2005	2004	2005	2004	2005	2004	2005
	<i>1,000 Head</i>	<i>1,000 Head</i>	<i>1,000 Head</i>	<i>1,000 Head</i>	<i>1,000 Head</i>	<i>1,000 Head</i>	<i>1,000 Head</i>	<i>1,000 Head</i>	<i>1,000 Head</i>	<i>1,000 Head</i>
CO	30	25	40	25	45	40	30	40	145	130
KS	95	80	100	85	120	125	85	110	400	400
NE	55	52	47	38	73	75	110	125	285	290
TX	150	130	115	150	140	160	50	110	455	550
Oth Sts	130	125	57	49	75	80	100	145	362	399
US	460	412	359	347	453	480	375	530	1,647	1,769
	During May									
	Under 600		600-699		700-799		800 Plus		Total	
	2004	2005	2004	2005	2004	2005	2004	2005	2004	2005
	<i>1,000 Head</i>	<i>1,000 Head</i>	<i>1,000 Head</i>	<i>1,000 Head</i>	<i>1,000 Head</i>	<i>1,000 Head</i>	<i>1,000 Head</i>	<i>1,000 Head</i>	<i>1,000 Head</i>	<i>1,000 Head</i>
CO	46	20	73	30	103	60	48	55	270	165
KS	65	60	95	95	195	160	140	195	495	510
NE	54	45	60	45	134	110	142	160	390	360
TX	190	165	185	160	225	240	140	185	740	750
Oth Sts	140	145	80	60	115	93	140	140	475	438
US	495	435	493	390	772	663	610	735	2,370	2,223

United States Cattle on Feed 1,000+ Capacity Feedlots Number Placed



United States Cattle on Feed 1,000+ Capacity Feedlots Number Marketed



**Cattle on Feed: Number Marketed, 1,000+ Capacity Feedlots,
by Month, State, and United States 2004-2005**

State	During Jun 2004	During May 2005	During Jun 2005		
			Number	as % of 2004	as % of May
	<i>1,000 Head</i>	<i>1,000 Head</i>	<i>1,000 Head</i>	<i>Percent</i>	<i>Percent</i>
AZ	28	29	35	125	121
CA	62	62	63	102	102
CO	205	150	180	88	120
ID	60	54	54	90	100
IA	59	73	68	115	93
KS	540	465	465	86	100
NE	435	480	510	117	106
NM	19	16	18	95	113
OK	64	64	58	91	91
SD	34	38	48	141	126
TX	495	480	480	97	100
WA	41	34	35	85	103
Oth Sts	43	52	59	137	113
US	2,085	1,997	2,073	99	104

**Cattle on Feed: Other Disappearance, 1,000+ Capacity Feedlots,
by Month, State, and United States 2004-2005 ¹**

State	During Jun 2004	During May 2005	During Jun 2005		
			Number	as % of 2004	as % of May
	<i>1,000 Head</i>	<i>1,000 Head</i>	<i>1,000 Head</i>	<i>Percent</i>	<i>Percent</i>
AZ	2	2	1	50	50
CA	7	5	5	71	100
CO	10	15	10	100	67
ID	2	2	1	50	50
IA	1	2	1	100	50
KS	20	25	15	75	60
NE	10	20	10	100	50
NM	1	1	3	300	300
OK	3	2	1	33	50
SD	1	4	3	300	75
TX	10	10	10	100	100
WA	1	2	1	100	50
Oth Sts	2	6	2	100	33
US	70	96	63	90	66

¹ Includes death loss, movement from feedlots to pasture, and shipments to other feedlots for further feeding.

**Cattle on Feed: Number on Feed by Class, 1,000+ Capacity Feedlots,
by Quarter, State, and United States, 2004-2005**

State	Steers & Steer Calves			Heifers & Heifer Calves			Cows and Bulls		
	Jul 1, 2004	Apr 1, 2005	Jul 1, 2005	Jul 1, 2004	Apr 1, 2005	Jul 1, 2005	Jul 1, 2004	Apr 1, 2005	Jul 1, 2005
	<i>1,000 Head</i>	<i>1,000 Head</i>	<i>1,000 Head</i>	<i>1,000 Head</i>	<i>1,000 Head</i>	<i>1,000 Head</i>	<i>1,000 Head</i>	<i>1,000 Head</i>	<i>1,000 Head</i>
AZ	292	317	317	3	6	5	0	0	0
CA	480	480	490	40	20	30	0	0	0
CO	560	620	560	375	390	345	5	10	5
ID	150	149	169	90	91	89	0	0	2
IA	260	300	265	129	154	149	1	1	1
KS	1,130	1,320	1,280	950	995	900	10	25	20
NE	1,100	1,410	1,150	740	835	660	10	15	10
NM	60	71	77	64	42	55	0	0	0
OK	205	215	205	109	106	114	1	4	1
SD	88	110	75	68	83	69	17	12	17
TX	1,750	1,680	1,940	1,008	936	1,005	2	4	5
WA	99	92	87	65	63	54	1	4	1
Oth Sts	205	225	190	60	82	57	5	3	3
US	6,379	6,989	6,805	3,701	3,803	3,532	52	78	65

**Cattle on Feed: Total Number on Feed, United States,
July 1, 2003-2005 ¹**

State	Jul 1, 2003	Jul 1, 2004	July 1, 2005		
			Number	as % of 2003	as % of 2004
	<i>1,000 Head</i>	<i>1,000 Head</i>	<i>1,000 Head</i>	<i>Percent</i>	<i>Percent</i>
US	11,810	11,800	12,000	102	102

¹ Cattle and calves on feed are animals for slaughter market being fed a ration of grain or other concentrates and are expected to produce a carcass that will grade select or better.

Terms and Definitions of Cattle on Feed Estimates

Cattle on feed are animals being fed a ration of grain, silage, hay and/or protein supplement for slaughter market that are expected to produce a carcass that will grade select or better. It excludes cattle being "backgrounded only" for later sale as feeders or later placement in another feedlot.

Placements are cattle put into a feedlot, fed a ration which will produce a carcass that will grade select or better, and are intended for the slaughter market.

Marketings are cattle shipped out of feedlots to a slaughter market.

Other disappearance includes death loss, movement from feedlots to pasture, and shipments to other feedlots for further feeding.

Reliability of Cattle on Feed Estimates

Survey Procedures: During January and July all known feedlots in the U.S. with capacity of 1,000 or more head are surveyed to provide data for cattle on feed estimates. During the other months, all known feedlots from 17 States are surveyed. The 17 States account for 98 percent of the cattle on feed in feedlots with capacity of 1,000 or more head.

Estimating Procedures: These cattle on feed estimates were prepared by the Agricultural Statistics Board after reviewing recommendations and analysis submitted by each State office. Regional and State survey data were reviewed for reasonableness with each other and with estimates from the previous month when setting the current estimates.

Revision Policy: Revisions to previous estimates are made to improve month to month relationships. Estimates for the previous month are subject to revision in all States each month when current estimates are made. In February, all monthly estimates for the previous year, and the number of feedlots and annual marketings from two years ago are reviewed and subject to revisions. The reviews are primarily based on slaughter data, state check-off or brand data, and any other data that may have been received after the original estimate was made. Estimates will also be reviewed after data from the Census of Agriculture are available. No revisions will be made after that date and estimates become final.

Reliability: Since all 1000+ capacity cattle on feed operators in every State are not included in the monthly survey, survey estimates are subject to sampling variability. Survey results are also subject to non-sampling errors such as omissions, duplications, and mistakes in reporting, recording, and processing the data. The effects of these errors cannot be measured directly. They are minimized through rigid quality controls in the data collection process and through a careful review of all reported data for consistency and reasonableness.

ACCESS TO REPORTS!!

For your convenience, there are several ways to obtain NASS reports, data products, and services:

INTERNET ACCESS

All NASS reports are available free of charge on the worldwide Internet. For access, connect to the Internet and go to the NASS Home Page at: www.usda.gov/nass/. Select "Today's Reports" or Publications and then Reports Calendar or Publications and then Search, by Title or Subject.

E-MAIL SUBSCRIPTION

All NASS reports are available by subscription free of charge direct to your e-mail address. Starting with the NASS Home Page at www.usda.gov/nass/, click on **Publications**, then click on the **Subscribe by E-mail** button which takes you to the page describing e-mail delivery of reports. Finally, click on **Go to the Subscription Page** and follow the instructions.

PRINTED REPORTS OR DATA PRODUCTS

CALL OUR TOLL-FREE ORDER DESK: 800-999-6779 (U.S. and Canada)
Other areas, please call 703-605-6220 FAX: 703-605-6900
(Visa, MasterCard, check, or money order acceptable for payment.)

ASSISTANCE

For **assistance** with general agricultural statistics or further information about NASS or its products or services, contact the **Agricultural Statistics Hotline** at **800-727-9540**, 7:30 a.m. to 4:00 p.m. ET, or e-mail: nass@nass.usda.gov.

The U.S. Department of Agriculture (USDA) prohibits discrimination in all its programs and activities on the basis of race, color, national origin, sex, religion, age, disability, political beliefs, sexual orientation, and marital or family status. (Not all prohibited bases apply to all programs.) Persons with disabilities who require alternative means for communication of program information (Braille, large print, audiotape, etc.) should contact USDA's TARGET Center at 202-720-2600 (voice and TDD).

To file a complaint of discrimination, write USDA, Director, Office of Civil Rights, Room 326-W, Whitten Building, 14th and Independence Avenue, SW, Washington, DC 20250-9410 or call 202-720-5964 (voice and TDD). USDA is an equal opportunity provider and employer.