



# Cattle On Feed

---

Released August 19, 2005, by the National Agricultural Statistics Service (NASS), Agricultural Statistics Board, U.S. Department of Agriculture. For information on *Cattle on Feed* call Mike Miller at (202) 720-3040, office hours 7:30 a.m. to 4:00 p.m. ET.

## U.S. Cattle on Feed Up 2 Percent

**Cattle and calves on feed** for slaughter market in the United States for feedlots with capacity of 1,000 or more head totaled 10.1 million head on August 1, 2005. The inventory was 2 percent above August 1, 2004 and 5 percent above August 1, 2003.

**Placements** in feedlots during July totaled 1.68 million, 2 percent below 2004 and 16 percent below 2003. This is the lowest placements for the month of July since the series began in 1996. Net placements were 1.62 million. During July, placements of cattle and calves weighing less than 600 pounds were 400,000, 600-699 pounds were 338,000, 700-799 pounds were 465,000, and 800 pounds and greater were 475,000.

**Marketings** of fed cattle during July totaled 1.92 million, slightly below 2004 and 16 percent below 2003. This is the lowest fed cattle marketings for the month of July since the series began in 1996.

**Other disappearance** totaled 60,000 during July, 3 percent above 2004 but unchanged from 2003.

**Cattle on Feed: Number on Feed, Placements, Marketings, and  
Other Disappearance, 1,000+ Capacity Feedlots,  
United States, August 1, 2003-2005**

Item	Number			2005 as % of	
	2003	2004	2005	2003	2004
	<i>1,000 Head</i>	<i>1,000 Head</i>	<i>1,000 Head</i>	<i>Percent</i>	<i>Percent</i>
On Feed Jul 1 <sup>1</sup>	9,923	10,132	*10,392	105	103
Placed on Feed During Jul	1,997	1,719	1,678	84	98
Fed Cattle Marketed During Jul	2,270	1,925	1,918	84	100
Other Disappearance During Jul <sup>2</sup>	60	58	60	100	103
On Feed Aug 1 <sup>1</sup>	9,590	9,868	10,092	105	102

\* Revised.

<sup>1</sup> Cattle and calves on feed are animals for slaughter market being fed a ration of grain or other concentrates and are expected to produce a carcass that will grade select or better.

<sup>2</sup> Includes death loss, movement from feedlots to pasture, and shipments to other feedlots for further feeding.

**Cattle on Feed: Number on Feed, Placements, Marketings, and  
Other Disappearance, 1,000+ Capacity Feedlots,  
United States, July 1, 2003-2005**

Item	Number			2005 as % of	
	2003	2004	2005	2003	2004
	<i>1,000 Head</i>	<i>1,000 Head</i>	<i>1,000 Head</i>	<i>Percent</i>	<i>Percent</i>
On Feed Jun 1 <sup>1</sup>	10,539	10,640	10,769	102	101
Placed on Feed During Jun	1,672	1,647	1,769	106	107
Fed Cattle Marketed During Jun	2,227	2,085	*2,083	94	100
Other Disappearance During Jun <sup>2</sup>	61	70	63	103	90
On Feed Jul 1 <sup>1</sup>	9,923	10,132	*10,392	105	103

\* Revised.

<sup>1</sup> Cattle and calves on feed are animals for slaughter market being fed a ration of grain or other concentrates and are expected to produce a carcass that will grade select or better.

<sup>2</sup> Includes death loss, movement from feedlots to pasture, and shipments to other feedlots for further feeding.

**Cattle on Feed: Number on Feed, 1,000+ Capacity Feedlots,  
by Month, State, and United States 2004-2005 <sup>1</sup>**

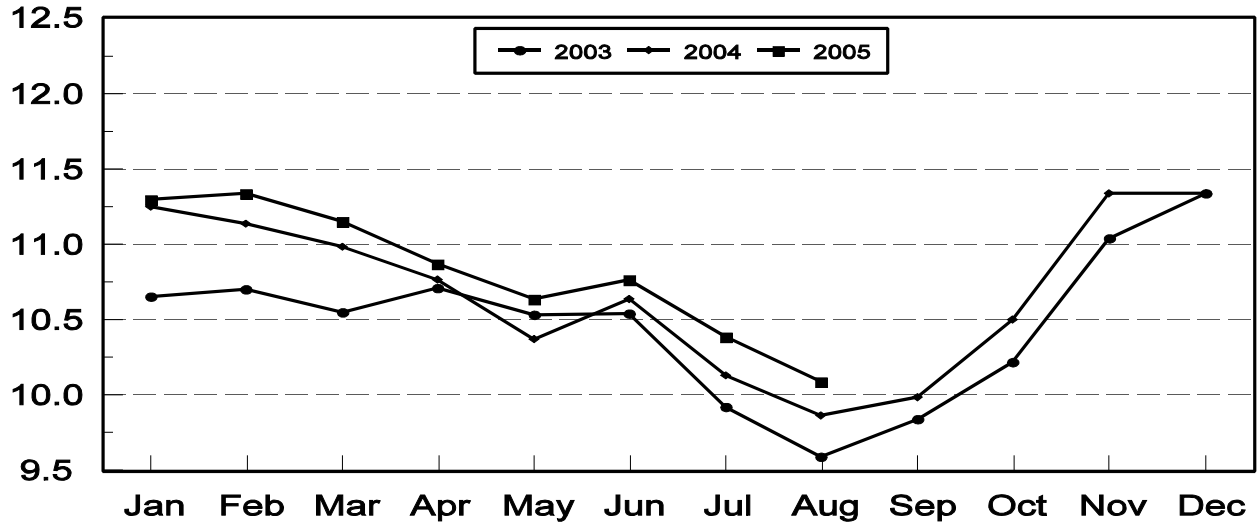
State	Aug 1, 2004	Jul 1, 2005	Aug 1, 2005		
			Number	as % of 2004	as % of Jul
	<i>1,000 Head</i>	<i>1,000 Head</i>	<i>1,000 Head</i>	<i>Percent</i>	<i>Percent</i>
AZ	294	322	313	106	97
CA	520	520	530	102	102
CO	880	*900	820	93	91
ID	235	260	250	106	96
IA	380	415	400	105	96
KS	2,120	2,200	2,190	103	100
NE	1,750	1,820	1,730	99	95
NM	127	132	134	106	102
OK	315	320	320	102	100
SD	157	161	143	91	89
TX	2,670	2,950	2,890	108	98
WA	165	142	137	83	96
Oth Sts	255	250	235	92	94
US	9,868	*10,392	10,092	102	97

\* Revised.

<sup>1</sup> Cattle and calves on feed are animals for slaughter market being fed a ration of grain or other concentrates and are expected to produce a carcass that will grade select or better.

**United States Cattle on Feed  
1,000+ Capacity Feedlots**

Million Head



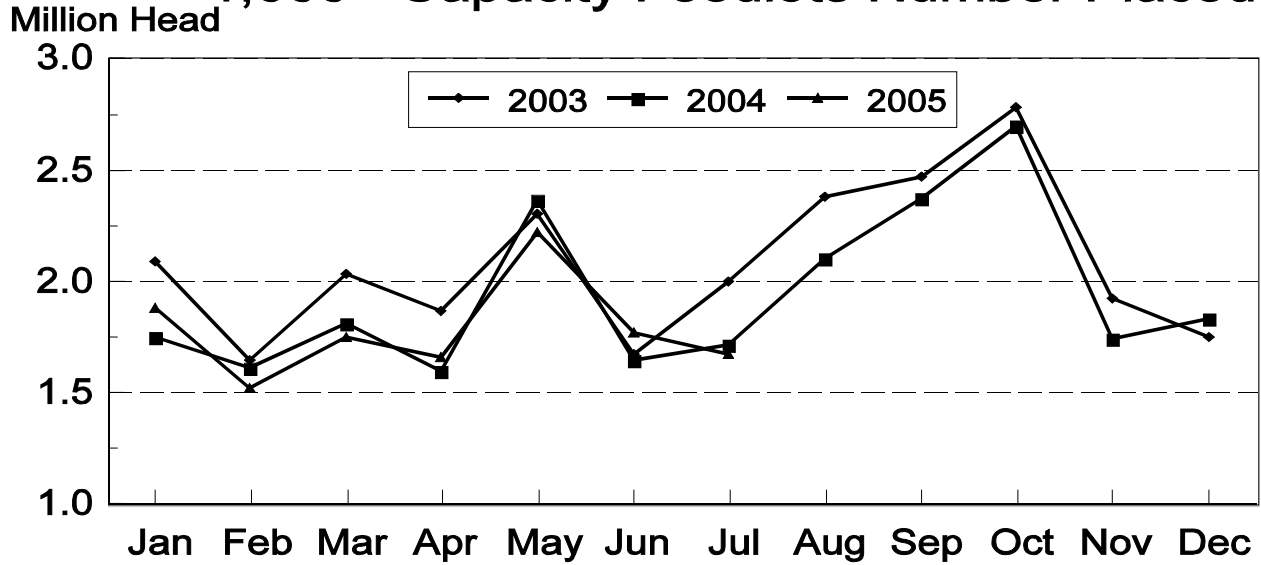
**Cattle on Feed: Number Placed on Feed, 1,000+ Capacity Feedlots,  
by Month, State, and United States 2004-2005**

State	During Jul 2004	During Jun 2005	During Jul 2005		
			Number	as % of 2004	as % of Jun
	<i>1,000 Head</i>	<i>1,000 Head</i>	<i>1,000 Head</i>	<i>Percent</i>	<i>Percent</i>
AZ	32	29	29	91	100
CA	65	73	72	111	99
CO	145	130	125	86	96
ID	43	70	36	84	51
IA	52	49	49	94	100
KS	520	400	480	92	120
NE	310	290	325	105	112
NM	22	26	23	105	88
OK	61	54	62	102	115
SD	12	26	15	125	58
TX	395	550	400	101	73
WA	33	41	26	79	63
Oth Sts	29	31	36	124	116
US	1,719	1,769	1,678	98	95

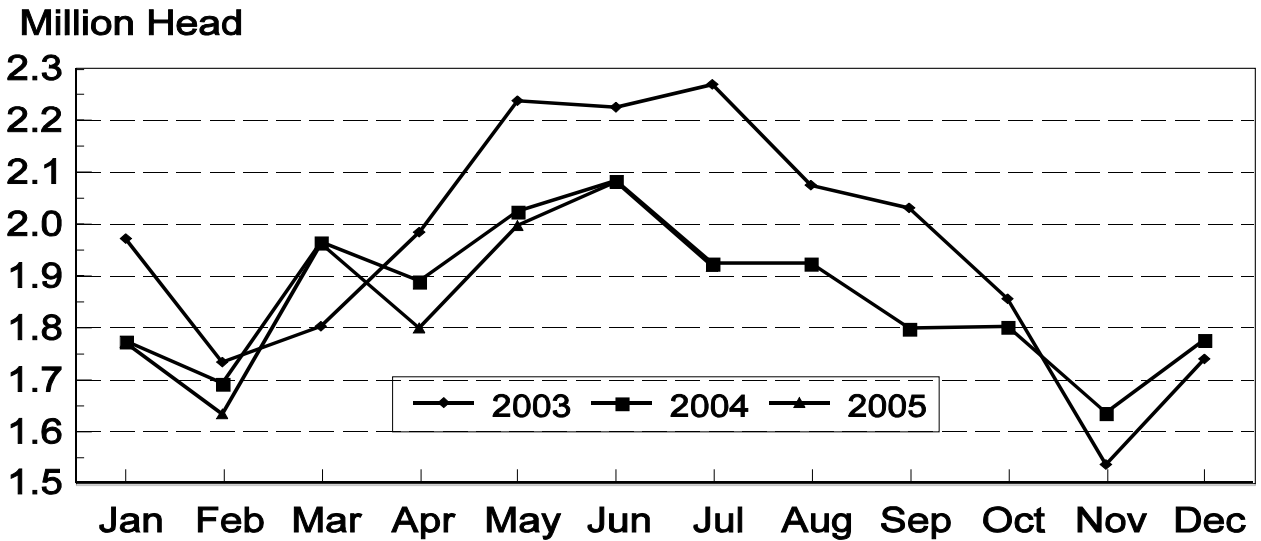
**Cattle on Feed: Number Placed on Feed by Weight Group, 1,000+ Capacity  
Feedlots, by Month, State, and United States, 2004-2005**

State	During July									
	Under 600		600-699		700-799		800 Plus		Total	
	2004	2005	2004	2005	2004	2005	2004	2005	2004	2005
	<i>1,000 Head</i>	<i>1,000 Head</i>	<i>1,000 Head</i>	<i>1,000 Head</i>	<i>1,000 Head</i>	<i>1,000 Head</i>	<i>1,000 Head</i>	<i>1,000 Head</i>	<i>1,000 Head</i>	<i>1,000 Head</i>
CO	30	20	30	20	50	45	35	40	145	125
KS	90	85	105	100	190	150	135	145	520	480
NE	40	40	55	65	84	90	131	130	310	325
TX	155	130	90	105	100	110	50	55	395	400
Oth Sts	130	125	44	48	75	70	100	105	349	348
US	445	400	324	338	499	465	451	475	1,719	1,678
	During June									
	Under 600		600-699		700-799		800 Plus		Total	
	2004	2005	2004	2005	2004	2005	2004	2005	2004	2005
	<i>1,000 Head</i>	<i>1,000 Head</i>	<i>1,000 Head</i>	<i>1,000 Head</i>	<i>1,000 Head</i>	<i>1,000 Head</i>	<i>1,000 Head</i>	<i>1,000 Head</i>	<i>1,000 Head</i>	<i>1,000 Head</i>
CO	30	25	40	25	45	40	30	40	145	130
KS	95	80	100	85	120	125	85	110	400	400
NE	55	52	47	38	73	75	110	125	285	290
TX	150	130	115	150	140	160	50	110	455	550
Oth Sts	130	125	57	49	75	80	100	145	362	399
US	460	412	359	347	453	480	375	530	1,647	1,769

## United States Cattle on Feed 1,000+ Capacity Feedlots Number Placed



## United States Cattle on Feed 1,000+ Capacity Feedlots Number Marketed



**Cattle on Feed: Number Marketed, 1,000+ Capacity Feedlots,  
by Month, State, and United States 2004-2005**

State	During Jul 2004	During Jun 2005	During Jul 2005		
			Number	as % of 2004	as % of Jun
	<i>1,000 Head</i>	<i>1,000 Head</i>	<i>1,000 Head</i>	<i>Percent</i>	<i>Percent</i>
AZ	31	35	37	119	106
CA	60	63	59	98	94
CO	200	*190	200	100	105
ID	47	54	45	96	83
IA	60	68	63	105	93
KS	475	465	470	99	101
NE	405	510	405	100	79
NM	17	18	18	106	100
OK	59	58	61	103	105
SD	26	48	30	115	63
TX	470	480	450	96	94
WA	32	35	30	94	86
Oth Sts	43	59	50	116	85
US	1,925	*2,083	1,918	100	92

\* Revised.

**Cattle on Feed: Other Disappearance, 1,000+ Capacity Feedlots,  
by Month, State, and United States 2004-2005 <sup>1</sup>**

State	During Jul 2004	During Jun 2005	During Jul 2005		
			Number	as % of 2004	as % of Jun
	<i>1,000 Head</i>	<i>1,000 Head</i>	<i>1,000 Head</i>	<i>Percent</i>	<i>Percent</i>
AZ	2	1	1	50	100
CA	5	5	3	60	60
CO	5	10	5	100	50
ID	1	1	1	100	100
IA	2	1	1	50	100
KS	15	15	20	133	133
NE	5	10	10	200	100
NM	2	3	3	150	100
OK	2	1	1	50	100
SD	2	3	3	150	100
TX	15	10	10	67	100
WA	1	1	1	100	100
Oth Sts	1	2	1	100	50
US	58	63	60	103	95

<sup>1</sup> Includes death loss, movement from feedlots to pasture, and shipments to other feedlots for further feeding.

## Terms and Definitions of Cattle on Feed Estimates

**Cattle on feed** are animals being fed a ration of grain, silage, hay and/or protein supplement for slaughter market that are expected to produce a carcass that will grade select or better. It excludes cattle being "backgrounded only" for later sale as feeders or later placement in another feedlot.

**Placements** are cattle put into a feedlot, fed a ration which will produce a carcass that will grade select or better, and are intended for the slaughter market.

**Marketings** are cattle shipped out of feedlots to a slaughter market.

**Other disappearance** includes death loss, movement from feedlots to pasture, and shipments to other feedlots for further feeding.

## Reliability of Cattle on Feed Estimates

**Survey Procedures:** During January and July all known feedlots in the U.S. with capacity of 1,000 or more head are surveyed to provide data for cattle on feed estimates. During the other months, all known feedlots from 17 States are surveyed. The 17 States account for 98 percent of the cattle on feed in feedlots with capacity of 1,000 or more head.

**Estimating Procedures:** These cattle on feed estimates were prepared by the Agricultural Statistics Board after reviewing recommendations and analysis submitted by each State office. Regional and State survey data were reviewed for reasonableness with each other and with estimates from the previous month when setting the current estimates.

**Revision Policy:** Revisions to previous estimates are made to improve month to month relationships. Estimates for the previous month are subject to revision in all States each month when current estimates are made. In February, all monthly estimates for the previous year, and the number of feedlots and annual marketings from two years ago are reviewed and subject to revisions. The reviews are primarily based on slaughter data, state check-off or brand data, and any other data that may have been received after the original estimate was made. Estimates will also be reviewed after data from the Census of Agriculture are available. No revisions will be made after that date and estimates become final.

**Reliability:** Since all 1000+ capacity cattle on feed operators in every State are not included in the monthly survey, survey estimates are subject to sampling variability. Survey results are also subject to non-sampling errors such as omissions, duplications, and mistakes in reporting, recording, and processing the data. The effects of these errors cannot be measured directly. They are minimized through rigid quality controls in the data collection process and through a careful review of all reported data for consistency and reasonableness.

## ACCESS TO REPORTS!!

---

For your convenience, there are several ways to obtain NASS reports, data products, and services:

### INTERNET ACCESS

All NASS reports are available free of charge on the worldwide Internet. For access, connect to the Internet and go to the NASS Home Page at: [www.usda.gov/nass/](http://www.usda.gov/nass/). Select "Today's Reports" or Publications and then Reports Calendar or Publications and then Search, by Title or Subject.

### E-MAIL SUBSCRIPTION

All NASS reports are available by subscription free of charge direct to your e-mail address. Starting with the NASS Home Page at [www.usda.gov/nass/](http://www.usda.gov/nass/), click on **Publications**, then click on the **Subscribe by E-mail** button which takes you to the page describing e-mail delivery of reports. Finally, click on **Go to the Subscription Page** and follow the instructions.

-----

### PRINTED REPORTS OR DATA PRODUCTS

**CALL OUR TOLL-FREE ORDER DESK: 800-999-6779 (U.S. and Canada)**  
**Other areas, please call 703-605-6220      FAX: 703-605-6900**  
**(Visa, MasterCard, check, or money order acceptable for payment.)**

-----

### ASSISTANCE

For **assistance** with general agricultural statistics or further information about NASS or its products or services, contact the **Agricultural Statistics Hotline** at **800-727-9540**, 7:30 a.m. to 4:00 p.m. ET, or e-mail: [nass@nass.usda.gov](mailto:nass@nass.usda.gov).

The U.S. Department of Agriculture (USDA) prohibits discrimination in all its programs and activities on the basis of race, color, national origin, age, disability, and where applicable, sex, marital status, familial status, parental status, religion, sexual orientation, genetic information, political beliefs, reprisal, or because all or part of an individual's income is derived from any public assistance program. (Not all prohibited bases apply to all programs.) Persons with disabilities who require alternative means for communication of program information (Braille, large print, audiotape, etc.) should contact USDA's TARGET Center at (202) 720-2600 (voice and TDD).

To file a complaint of discrimination, write to USDA, Director, Office of Civil Rights, 1400 Independence Avenue, S.W., Washington, D.C. 20250-9410, or call (800) 795-3272 (voice) or (202) 720-6382 (TDD). USDA is an equal opportunity provider and employer.