



NASS

FACT FINDERS FOR AGRICULTURE
UNITED STATES DEPARTMENT OF AGRICULTURE

Washington, D.C.

Cattle On Feed

Released September 23, 2005, by the National Agricultural Statistics Service (NASS), Agricultural Statistics Board, U.S. Department of Agriculture. For information on *Cattle on Feed* call Mike Miller at (202) 720-3040, office hours 7:30 a.m. to 4:00 p.m. ET.

U.S. Cattle on Feed Up Slightly

Cattle and calves on feed for slaughter market in the United States for feedlots with capacity of 1,000 or more head totaled 10.0 million head on September 1, 2005. The inventory was slightly above September 1, 2004 and 2 percent above September 1, 2003.

Placements in feedlots during August totaled 1.99 million, 5 percent below 2004 and 16 percent below 2003. This is the lowest placements for the month of August since the series began in 1996. Net placements were 1.94 million. During August, placements of cattle and calves weighing less than 600 pounds were 418,000, 600-699 pounds were 385,000, 700-799 pounds were 540,000, and 800 pounds and greater were 650,000.

Marketings of fed cattle during August totaled 2.03 million, 6 percent above 2004 but 2 percent below 2003.

Other disappearance totaled 53,000 during August, 5 percent below 2004 and 12 percent below 2003.

**Cattle on Feed: Number on Feed, Placements, Marketings, and
Other Disappearance, 1,000+ Capacity Feedlots,
United States, September 1, 2003-2005**

Item	Number			2005 as % of	
	2003	2004	2005	2003	2004
	<i>1,000 Head</i>	<i>1,000 Head</i>	<i>1,000 Head</i>	<i>Percent</i>	<i>Percent</i>
On Feed Aug 1 ¹	9,590	9,868	10,092	105	102
Placed on Feed During Aug	2,384	2,102	1,993	84	95
Fed Cattle Marketed During Aug	2,075	1,926	2,032	98	106
Other Disappearance During Aug ²	60	56	53	88	95
On Feed Sep 1 ¹	9,839	9,988	10,000	102	100

¹ Cattle and calves on feed are animals for slaughter market being fed a ration of grain or other concentrates and are expected to produce a carcass that will grade select or better.

² Includes death loss, movement from feedlots to pasture, and shipments to other feedlots for further feeding.

**Cattle on Feed: Number on Feed, Placements, Marketings, and
Other Disappearance, 1,000+ Capacity Feedlots,
United States, August 1, 2003-2005**

Item	Number			2005 as % of	
	2003	2004	2005	2003	2004
	<i>1,000 Head</i>	<i>1,000 Head</i>	<i>1,000 Head</i>	<i>Percent</i>	<i>Percent</i>
On Feed Jul 1 ¹	9,923	10,132	10,392	105	103
Placed on Feed During Jul	1,997	1,719	1,678	84	98
Fed Cattle Marketed During Jul	2,270	1,925	1,918	84	100
Other Disappearance During Jul ²	60	58	60	100	103
On Feed Aug 1 ¹	9,590	9,868	10,092	105	102

¹ Cattle and calves on feed are animals for slaughter market being fed a ration of grain or other concentrates and are expected to produce a carcass that will grade select or better.

² Includes death loss, movement from feedlots to pasture, and shipments to other feedlots for further feeding.

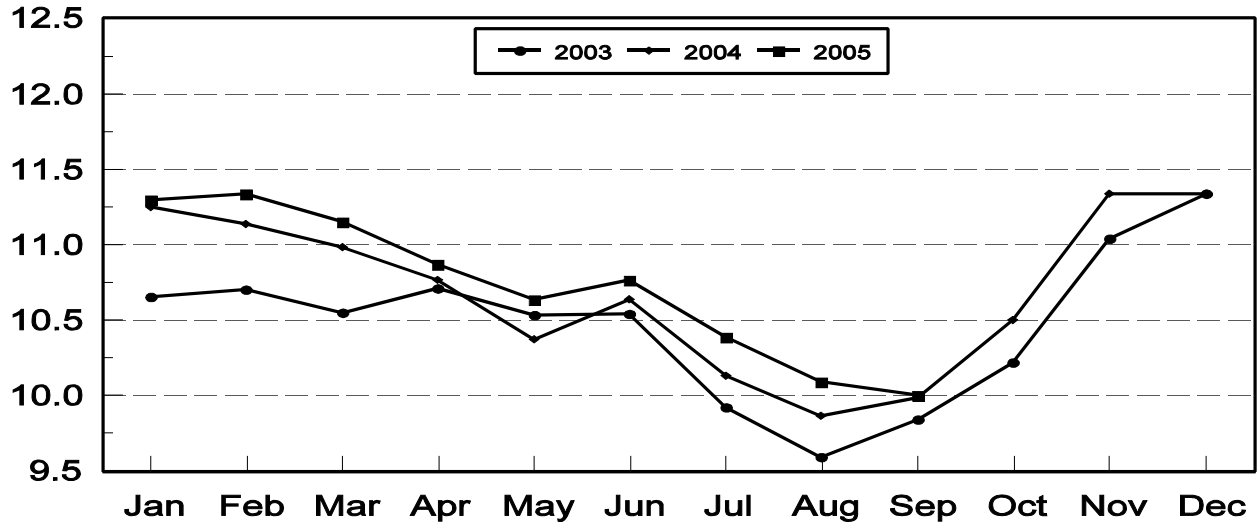
**Cattle on Feed: Number on Feed, 1,000+ Capacity Feedlots,
by Month, State, and United States 2004-2005 ¹**

State	Sep 1, 2004	Aug 1, 2005	Sep 1, 2005		
			Number	as % of 2004	as % of Aug
	<i>1,000 Head</i>	<i>1,000 Head</i>	<i>1,000 Head</i>	<i>Percent</i>	<i>Percent</i>
AZ	296	313	314	106	100
CA	520	530	530	102	100
CO	930	820	770	83	94
ID	245	250	250	102	100
IA	375	400	395	105	99
KS	2,130	2,190	2,210	104	101
NE	1,800	1,730	1,770	98	102
NM	129	134	135	105	101
OK	325	320	320	98	100
SD	138	143	132	96	92
TX	2,670	2,890	2,800	105	97
WA	175	137	139	79	101
Oth Sts	255	235	235	92	100
US	9,988	10,092	10,000	100	99

¹ Cattle and calves on feed are animals for slaughter market being fed a ration of grain or other concentrates and are expected to produce a carcass that will grade select or better.

**United States Cattle on Feed
1,000+ Capacity Feedlots**

Million Head



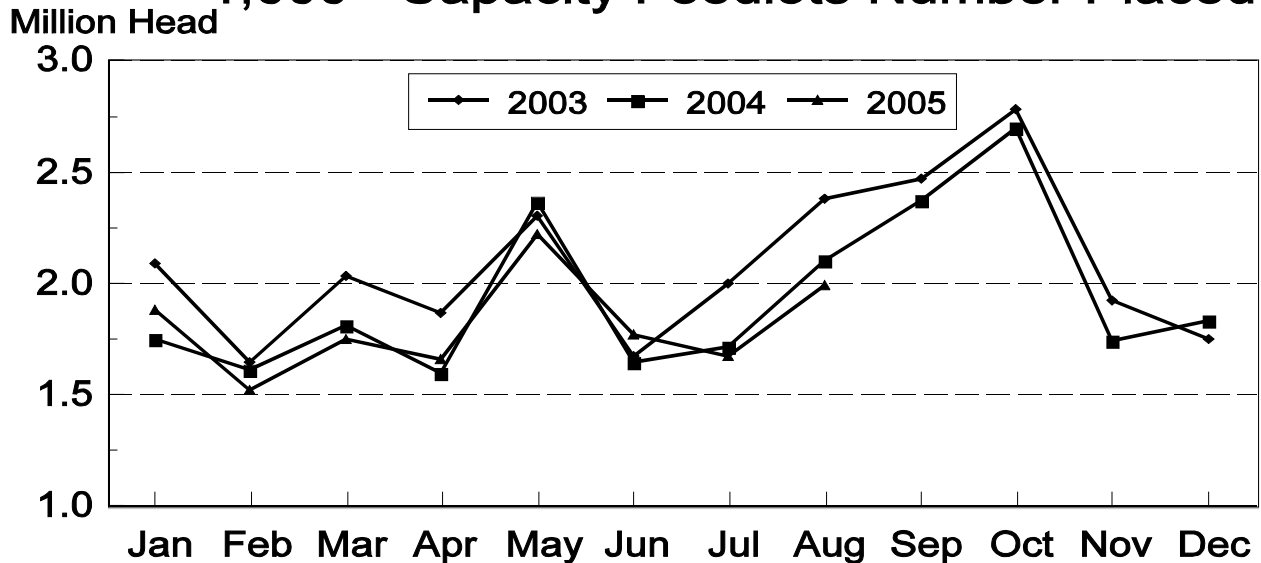
**Cattle on Feed: Number Placed on Feed, 1,000+ Capacity Feedlots,
by Month, State, and United States 2004-2005**

State	During Aug 2004	During Jul 2005	During Aug 2005		
			Number	as % of 2004	as % of Jul
	<i>1,000 Head</i>	<i>1,000 Head</i>	<i>1,000 Head</i>	<i>Percent</i>	<i>Percent</i>
AZ	30	29	35	117	121
CA	63	72	62	98	86
CO	205	125	155	76	124
ID	58	36	51	88	142
IA	62	49	69	111	141
KS	520	480	520	100	108
NE	420	325	415	99	128
NM	23	23	28	122	122
OK	76	62	70	92	113
SD	25	15	24	96	160
TX	530	400	480	91	120
WA	36	26	30	83	115
Oth Sts	54	36	54	100	150
US	2,102	1,678	1,993	95	119

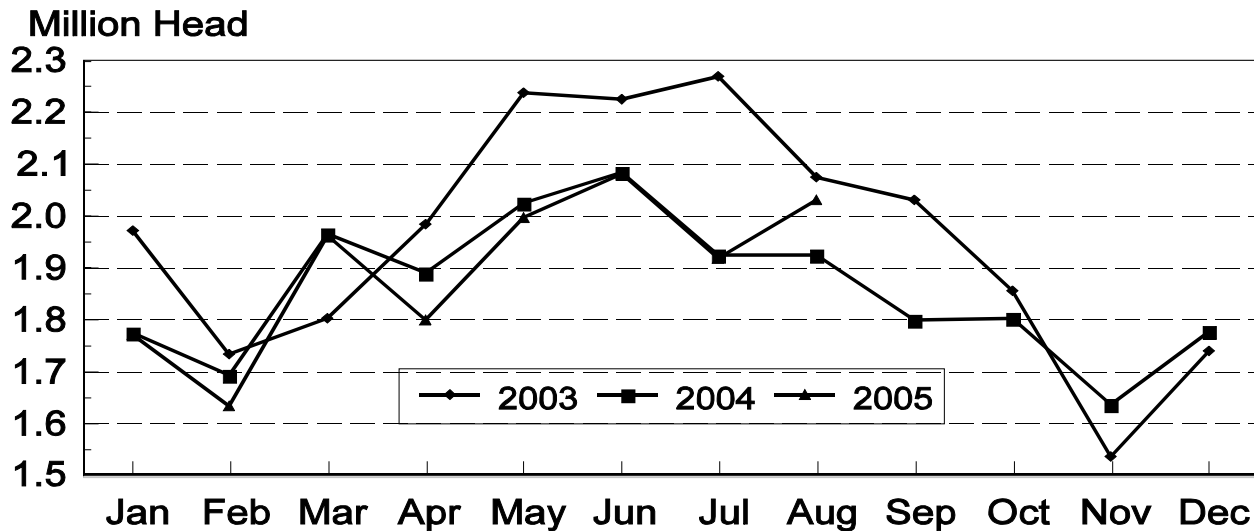
**Cattle on Feed: Number Placed on Feed by Weight Group, 1,000+ Capacity
Feedlots, by Month, State, and United States, 2004-2005**

State	During August									
	Under 600		600-699		700-799		800 Plus		Total	
	2004	2005	2004	2005	2004	2005	2004	2005	2004	2005
	<i>1,000 Head</i>	<i>1,000 Head</i>	<i>1,000 Head</i>	<i>1,000 Head</i>	<i>1,000 Head</i>	<i>1,000 Head</i>	<i>1,000 Head</i>	<i>1,000 Head</i>	<i>1,000 Head</i>	<i>1,000 Head</i>
CO	30	20	40	25	65	40	70	70	205	155
KS	115	85	100	105	180	165	125	165	520	520
NE	66	43	54	65	100	112	200	195	420	415
TX	165	140	165	130	130	135	70	75	530	480
Oth Sts	130	130	57	60	90	88	150	145	427	423
US	506	418	416	385	565	540	615	650	2,102	1,993
	During July									
	Under 600		600-699		700-799		800 Plus		Total	
	2004	2005	2004	2005	2004	2005	2004	2005	2004	2005
	<i>1,000 Head</i>	<i>1,000 Head</i>	<i>1,000 Head</i>	<i>1,000 Head</i>	<i>1,000 Head</i>	<i>1,000 Head</i>	<i>1,000 Head</i>	<i>1,000 Head</i>	<i>1,000 Head</i>	<i>1,000 Head</i>
CO	30	20	30	20	50	45	35	40	145	125
KS	90	85	105	100	190	150	135	145	520	480
NE	40	40	55	65	84	90	131	130	310	325
TX	155	130	90	105	100	110	50	55	395	400
Oth Sts	130	125	44	48	75	70	100	105	349	348
US	445	400	324	338	499	465	451	475	1,719	1,678

United States Cattle on Feed 1,000+ Capacity Feedlots Number Placed



United States Cattle on Feed 1,000+ Capacity Feedlots Number Marketed



**Cattle on Feed: Number Marketed, 1,000+ Capacity Feedlots,
by Month, State, and United States 2004-2005**

State	During Aug 2004	During Jul 2005	During Aug 2005		
			Number	as % of 2004	as % of Jul
	<i>1,000 Head</i>	<i>1,000 Head</i>	<i>1,000 Head</i>	<i>Percent</i>	<i>Percent</i>
AZ	26	37	33	127	89
CA	59	59	57	97	97
CO	150	200	200	133	100
ID	47	45	50	106	111
IA	66	63	72	109	114
KS	495	470	490	99	104
NE	360	405	365	101	90
NM	19	18	24	126	133
OK	64	61	68	106	111
SD	43	30	34	79	113
TX	520	450	560	108	124
WA	25	30	27	108	90
Oth Sts	52	50	52	100	104
US	1,926	1,918	2,032	106	106

**Cattle on Feed: Other Disappearance, 1,000+ Capacity Feedlots,
by Month, State, and United States 2004-2005 ¹**

State	During Aug 2004	During Jul 2005	During Aug 2005		
			Number	as % of 2004	as % of Jul
	<i>1,000 Head</i>	<i>1,000 Head</i>	<i>1,000 Head</i>	<i>Percent</i>	<i>Percent</i>
AZ	2	1	1	50	100
CA	4	3	5	125	167
CO	5	5	5	100	100
ID	1	1	1	100	100
IA	1	1	2	200	200
KS	15	20	10	67	50
NE	10	10	10	100	100
NM	2	3	3	150	100
OK	2	1	2	100	200
SD	1	3	1	100	33
TX	10	10	10	100	100
WA	1	1	1	100	100
Oth Sts	2	1	2	100	200
US	56	60	53	95	88

¹ Includes death loss, movement from feedlots to pasture, and shipments to other feedlots for further feeding.

Terms and Definitions of Cattle on Feed Estimates

Cattle on feed are animals being fed a ration of grain, silage, hay and/or protein supplement for slaughter market that are expected to produce a carcass that will grade select or better. It excludes cattle being "backgrounded only" for later sale as feeders or later placement in another feedlot.

Placements are cattle put into a feedlot, fed a ration which will produce a carcass that will grade select or better, and are intended for the slaughter market.

Marketings are cattle shipped out of feedlots to a slaughter market.

Other disappearance includes death loss, movement from feedlots to pasture, and shipments to other feedlots for further feeding.

Reliability of Cattle on Feed Estimates

Survey Procedures: During January and July all known feedlots in the U.S. with capacity of 1,000 or more head are surveyed to provide data for cattle on feed estimates. During the other months, all known feedlots from 17 States are surveyed. The 17 States account for 98 percent of the cattle on feed in feedlots with capacity of 1,000 or more head.

Estimating Procedures: These cattle on feed estimates were prepared by the Agricultural Statistics Board after reviewing recommendations and analysis submitted by each State office. Regional and State survey data were reviewed for reasonableness with each other and with estimates from the previous month when setting the current estimates.

Revision Policy: Revisions to previous estimates are made to improve month to month relationships. Estimates for the previous month are subject to revision in all States each month when current estimates are made. In February, all monthly estimates for the previous year, and the number of feedlots and annual marketings from two years ago are reviewed and subject to revisions. The reviews are primarily based on slaughter data, state check-off or brand data, and any other data that may have been received after the original estimate was made. Estimates will also be reviewed after data from the Census of Agriculture are available. No revisions will be made after that date and estimates become final.

Reliability: Since all 1000+ capacity cattle on feed operators in every State are not included in the monthly survey, survey estimates are subject to sampling variability. Survey results are also subject to non-sampling errors such as omissions, duplications, and mistakes in reporting, recording, and processing the data. The effects of these errors cannot be measured directly. They are minimized through rigid quality controls in the data collection process and through a careful review of all reported data for consistency and reasonableness.

ACCESS TO REPORTS!!

For your convenience, there are several ways to obtain NASS reports, data products, and services:

INTERNET ACCESS

All NASS reports are available free of charge on the worldwide Internet. For access, connect to the Internet and go to the NASS Home Page at: www.usda.gov/nass/. Select "Today's Reports" or Publications and then Reports Calendar or Publications and then Search, by Title or Subject.

E-MAIL SUBSCRIPTION

All NASS reports are available by subscription free of charge direct to your e-mail address. Starting with the NASS Home Page at www.usda.gov/nass/, click on **Publications**, then click on the **Subscribe by E-mail** button which takes you to the page describing e-mail delivery of reports. Finally, click on **Go to the Subscription Page** and follow the instructions.

PRINTED REPORTS OR DATA PRODUCTS

CALL OUR TOLL-FREE ORDER DESK: 800-999-6779 (U.S. and Canada)
Other areas, please call 703-605-6220 FAX: 703-605-6900
(Visa, MasterCard, check, or money order acceptable for payment.)

ASSISTANCE

For **assistance** with general agricultural statistics or further information about NASS or its products or services, contact the **Agricultural Statistics Hotline** at **800-727-9540**, 7:30 a.m. to 4:00 p.m. ET, or e-mail: nass@nass.usda.gov.

The U.S. Department of Agriculture (USDA) prohibits discrimination in all its programs and activities on the basis of race, color, national origin, age, disability, and where applicable, sex, marital status, familial status, parental status, religion, sexual orientation, genetic information, political beliefs, reprisal, or because all or part of an individual's income is derived from any public assistance program. (Not all prohibited bases apply to all programs.) Persons with disabilities who require alternative means for communication of program information (Braille, large print, audiotape, etc.) should contact USDA's TARGET Center at (202) 720-2600 (voice and TDD).

To file a complaint of discrimination, write to USDA, Director, Office of Civil Rights, 1400 Independence Avenue, S.W., Washington, D.C. 20250-9410, or call (800) 795-3272 (voice) or (202) 720-6382 (TDD). USDA is an equal opportunity provider and employer.