



# NASS

FACT FINDERS FOR AGRICULTURE  
UNITED STATES DEPARTMENT OF AGRICULTURE

Washington, D.C.

## Cattle On Feed

---

Released October 21, 2005, by the National Agricultural Statistics Service (NASS), Agricultural Statistics Board, U.S. Department of Agriculture. For information on *Cattle on Feed* call Mike Miller at (202) 720-3040, office hours 7:30 a.m. to 4:00 p.m. ET.

### U.S. Cattle on Feed Down Slightly

**Cattle and calves on feed** for slaughter market in the United States for feedlots with capacity of 1,000 or more head totaled 10.5 million head on October 1, 2005. The inventory was slightly below October 1, 2004 but up 3 percent from October 1, 2003. The inventory included 6.87 million steers and steer calves, up 6 percent from the previous year. This group accounted for 66 percent of the total inventory. Heifers and heifer calves accounted for 3.55 million head, down 11 percent from 2004.

**Placements** in feedlots during September totaled 2.36 million, 1 percent below 2004 and 5 percent below 2003. Net placements were 2.30 million head. During September, placements of cattle and calves weighing less than 600 pounds were 565,000, 600-699 pounds were 505,000, 700-799 pounds were 550,000, and 800 pounds and greater were 735,000.

**Marketings** of fed cattle during September totaled 1.82 million, 1 percent above 2004 but 11 percent below 2003.

**Other disappearance** totaled 57,000 during September, 7 percent below 2004 and 10 percent below 2003.

**Cattle on Feed: Number on Feed, Placements, Marketings, and  
Other Disappearance, 1,000+ Capacity Feedlots,  
United States, October 1, 2003-2005**

Item	Number			2005 as % of	
	2003	2004	2005	2003	2004
	<i>1,000 Head</i>	<i>1,000 Head</i>	<i>1,000 Head</i>	<i>Percent</i>	<i>Percent</i>
On Feed Sep 1 <sup>1</sup>	9,839	9,988	10,000	102	100
Placed on Feed During Sep	2,474	2,375	2,355	95	99
Fed Cattle Marketed During Sep	2,032	1,800	1,816	89	101
Other Disappearance During Sep <sup>2</sup>	63	61	57	90	93
On Feed Oct 1 <sup>1</sup>	10,218	10,502	10,482	103	100

<sup>1</sup> Cattle and calves on feed are animals for slaughter market being fed a ration of grain or other concentrates and are expected to produce a carcass that will grade select or better.

<sup>2</sup> Includes death loss, movement from feedlots to pasture, and shipments to other feedlots for further feeding.

**Cattle on Feed: Number on Feed, Placements, Marketings, and  
Other Disappearance, 1,000+ Capacity Feedlots,  
United States, September 1, 2003-2005**

Item	Number			2005 as % of	
	2003	2004	2005	2003	2004
	<i>1,000 Head</i>	<i>1,000 Head</i>	<i>1,000 Head</i>	<i>Percent</i>	<i>Percent</i>
On Feed Aug 1 <sup>1</sup>	9,590	9,868	10,092	105	102
Placed on Feed During Aug	2,384	2,102	1,993	84	95
Fed Cattle Marketed During Aug	2,075	1,926	2,032	98	106
Other Disappearance During Aug <sup>2</sup>	60	56	53	88	95
On Feed Sep 1 <sup>1</sup>	9,839	9,988	10,000	102	100

<sup>1</sup> Cattle and calves on feed are animals for slaughter market being fed a ration of grain or other concentrates and are expected to produce a carcass that will grade select or better.

<sup>2</sup> Includes death loss, movement from feedlots to pasture, and shipments to other feedlots for further feeding.

**Cattle on Feed: Number on Feed by Class, 1,000+ Capacity Feedlots,  
United States, October 1, 2003-2005**

Item	Number			2005 as % of	
	2003	2004	2005	2003	2004
	<i>1,000 Head</i>	<i>1,000 Head</i>	<i>1,000 Head</i>	<i>Percent</i>	<i>Percent</i>
Class on Feed Oct 1					
Steers and Steer Calves	6,243	6,468	6,872	110	106
Heifers and Heifer Calves	3,911	3,974	3,553	91	89
Cows and Bulls	64	60	57	89	95

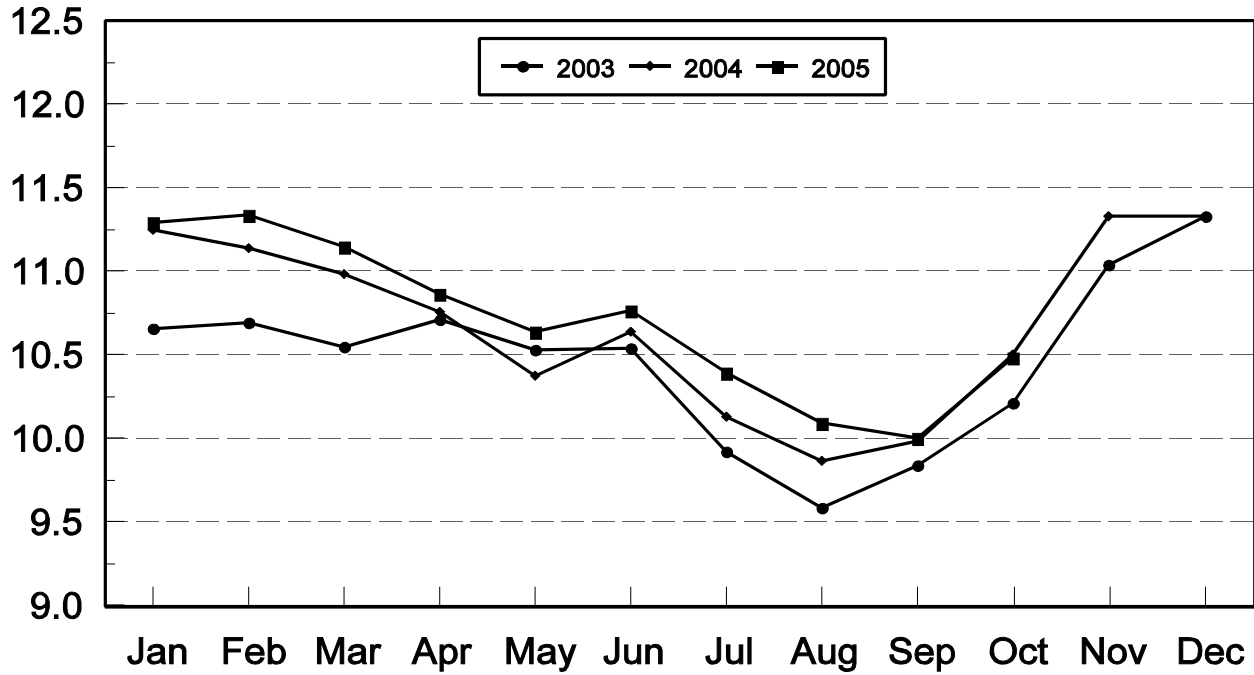
**Cattle on Feed: Number on Feed, 1,000+ Capacity Feedlots,  
by Month, State, and United States 2004-2005 <sup>1</sup>**

State	Oct 1, 2004	Sep 1, 2005	Oct 1, 2005		
			Number	as % of 2004	as % of Sep
	<i>1,000 Head</i>	<i>1,000 Head</i>	<i>1,000 Head</i>	<i>Percent</i>	<i>Percent</i>
AZ	298	314	318	107	101
CA	520	530	535	103	101
CO	1,020	770	900	88	117
ID	275	250	270	98	108
IA	375	395	410	109	104
KS	2,220	2,210	2,250	101	102
NE	1,940	1,770	1,940	100	110
NM	136	135	136	100	101
OK	340	320	335	99	105
SD	143	132	130	91	98
TX	2,770	2,800	2,830	102	101
WA	180	139	153	85	110
Oth Sts	285	235	275	96	117
US	10,502	10,000	10,482	100	105

<sup>1</sup> Cattle and calves on feed are animals for slaughter market being fed a ration of grain or other concentrates and are expected to produce a carcass that will grade select or better.

## United States Cattle on Feed 1,000+ Capacity Feedlots

Million Head



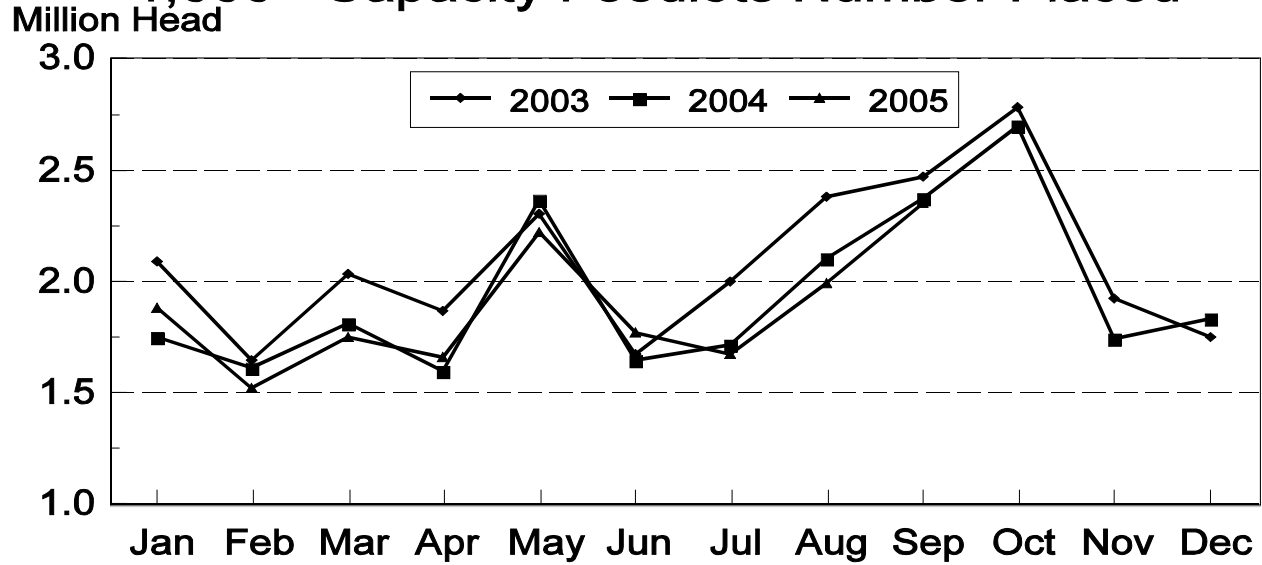
**Cattle on Feed: Number Placed on Feed, 1,000+ Capacity Feedlots,  
by Month, State, and United States 2004-2005**

State	During Sep 2004	During Aug 2005	During Sep 2005		
			Number	as % of 2004	as % of Aug
	<i>1,000 Head</i>	<i>1,000 Head</i>	<i>1,000 Head</i>	<i>Percent</i>	<i>Percent</i>
AZ	28	35	29	104	83
CA	64	62	68	106	110
CO	265	155	280	106	181
ID	84	51	69	82	135
IA	70	69	90	129	130
KS	520	520	510	98	98
NE	470	415	500	106	120
NM	29	28	26	90	93
OK	80	70	69	86	99
SD	41	24	40	98	167
TX	600	480	550	92	115
WA	48	30	40	83	133
Oth Sts	76	54	84	111	156
US	2,375	1,993	2,355	99	118

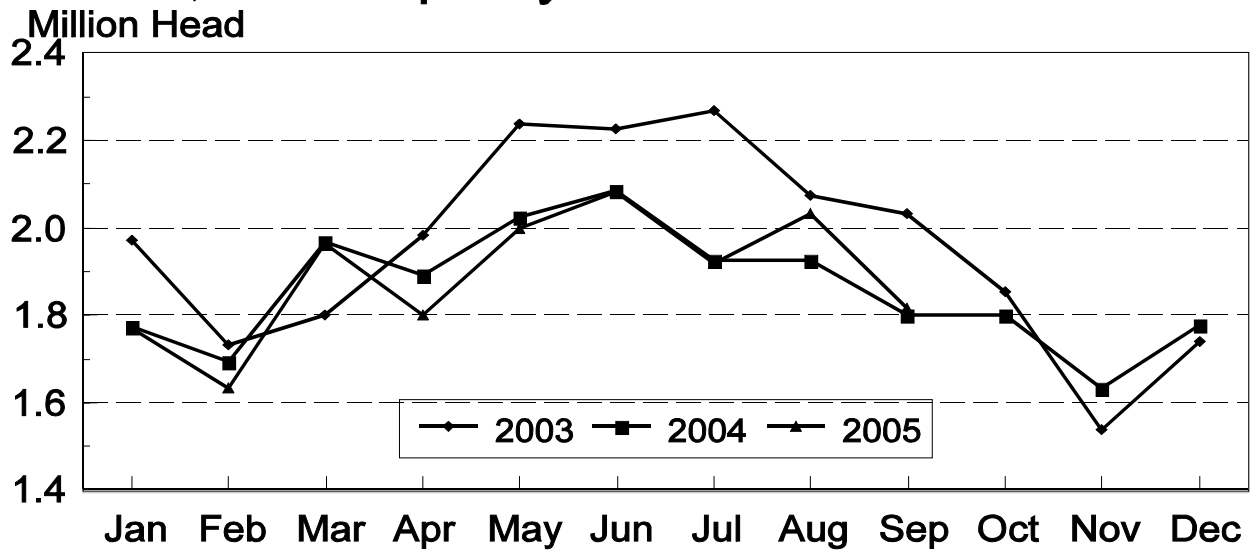
**Cattle on Feed: Number Placed on Feed by Weight Group, 1,000+ Capacity  
Feedlots, by Month, State, and United States, 2004-2005**

State	During September									
	Under 600		600-699		700-799		800 Plus		Total	
	2004	2005	2004	2005	2004	2005	2004	2005	2004	2005
	<i>1,000 Head</i>	<i>1,000 Head</i>	<i>1,000 Head</i>	<i>1,000 Head</i>	<i>1,000 Head</i>	<i>1,000 Head</i>	<i>1,000 Head</i>	<i>1,000 Head</i>	<i>1,000 Head</i>	<i>1,000 Head</i>
CO	30	30	50	45	60	70	125	135	265	280
KS	135	120	110	120	140	130	135	140	520	510
NE	88	85	70	90	102	120	210	205	470	500
TX	210	175	180	185	145	130	65	60	600	550
Oth Sts	165	155	65	65	105	100	185	195	520	515
US	628	565	475	505	552	550	720	735	2,375	2,355
	During August									
	Under 600		600-699		700-799		800 Plus		Total	
	2004	2005	2004	2005	2004	2005	2004	2005	2004	2005
	<i>1,000 Head</i>	<i>1,000 Head</i>	<i>1,000 Head</i>	<i>1,000 Head</i>	<i>1,000 Head</i>	<i>1,000 Head</i>	<i>1,000 Head</i>	<i>1,000 Head</i>	<i>1,000 Head</i>	<i>1,000 Head</i>
CO	30	20	40	25	65	40	70	70	205	155
KS	115	85	100	105	180	165	125	165	520	520
NE	66	43	54	65	100	112	200	195	420	415
TX	165	140	165	130	130	135	70	75	530	480
Oth Sts	130	130	57	60	90	88	150	145	427	423
US	506	418	416	385	565	540	615	650	2,102	1,993

## United States Cattle on Feed 1,000+ Capacity Feedlots Number Placed



## United States Cattle on Feed 1,000+ Capacity Feedlots Number Marketed



**Cattle on Feed: Number Marketed, 1,000+ Capacity Feedlots,  
by Month, State, and United States 2004-2005**

State	During Sep 2004	During Aug 2005	During Sep 2005		
			Number	as % of 2004	as % of Aug
	<i>1,000 Head</i>	<i>1,000 Head</i>	<i>1,000 Head</i>	<i>Percent</i>	<i>Percent</i>
AZ	25	33	24	96	73
CA	60	57	57	95	100
CO	170	200	145	85	73
ID	53	50	48	91	96
IA	69	72	74	107	103
KS	410	490	455	111	93
NE	320	365	320	100	88
NM	19	24	22	116	92
OK	62	68	53	85	78
SD	35	34	40	114	118
TX	490	560	510	104	91
WA	42	27	25	60	93
Oth Sts	45	52	43	96	83
US	1,800	2,032	1,816	101	89

**Cattle on Feed: Other Disappearance, 1,000+ Capacity Feedlots,  
by Month, State, and United States 2004-2005 <sup>1</sup>**

State	During Sep 2004	During Aug 2005	During Sep 2005		
			Number	as % of 2004	as % of Aug
	<i>1,000 Head</i>	<i>1,000 Head</i>	<i>1,000 Head</i>	<i>Percent</i>	<i>Percent</i>
AZ	1	1	1	100	100
CA	4	5	6	150	120
CO	5	5	5	100	100
ID	1	1	1	100	100
IA	1	2	1	100	50
KS	20	10	15	75	150
NE	10	10	10	100	100
NM	3	3	3	100	100
OK	3	2	1	33	50
SD	1	1	2	200	200
TX	10	10	10	100	100
WA	1	1	1	100	100
Oth Sts	1	2	1	100	50
US	61	53	57	93	108

<sup>1</sup> Includes death loss, movement from feedlots to pasture, and shipments to other feedlots for further feeding.

**Cattle on Feed: Number on Feed by Class, 1,000+ Capacity Feedlots,  
by Quarter, State, and United States, 2004-2005**

State	Steers & Steer Calves			Heifers & Heifer Calves			Cows and Bulls		
	Oct 1, 2004	Jul 1, 2005	Oct 1, 2005	Oct 1, 2004	Jul 1, 2005	Oct 1, 2005	Oct 1, 2004	Jul 1, 2005	Oct 1, 2005
	<i>1,000 Head</i>	<i>1,000 Head</i>	<i>1,000 Head</i>	<i>1,000 Head</i>	<i>1,000 Head</i>	<i>1,000 Head</i>	<i>1,000 Head</i>	<i>1,000 Head</i>	<i>1,000 Head</i>
AZ	296	317	316	2	5	2	0	0	0
CA	485	490	505	35	30	30	0	0	0
CO	605	*555	585	410	*340	310	5	5	5
ID	170	169	166	104	89	101	1	2	3
IA	240	265	280	134	149	129	1	1	1
KS	1,180	1,280	1,330	1,020	900	900	20	20	20
NE	1,110	1,150	1,140	820	660	790	10	10	10
NM	78	77	76	58	55	60	0	0	0
OK	220	205	235	118	114	100	2	1	0
SD	71	75	64	60	69	56	12	17	10
TX	1,710	1,940	1,880	1,056	1,005	947	4	5	3
WA	108	87	90	70	54	62	2	1	1
Oth Sts	195	190	205	87	57	66	3	3	4
US	6,468	*6,800	6,872	3,974	*3,527	3,553	60	65	57

\* Revised.

## Terms and Definitions of Cattle on Feed Estimates

**Cattle on feed** are animals being fed a ration of grain, silage, hay and/or protein supplement for slaughter market that are expected to produce a carcass that will grade select or better. It excludes cattle being "backgrounded only" for later sale as feeders or later placement in another feedlot.

**Placements** are cattle put into a feedlot, fed a ration which will produce a carcass that will grade select or better, and are intended for the slaughter market.

**Marketings** are cattle shipped out of feedlots to a slaughter market.

**Other disappearance** includes death loss, movement from feedlots to pasture, and shipments to other feedlots for further feeding.

## Reliability of Cattle on Feed Estimates

**Survey Procedures:** During January and July all known feedlots in the U.S. with capacity of 1,000 or more head are surveyed to provide data for cattle on feed estimates. During the other months, all known feedlots from 17 States are surveyed. The 17 States account for 98 percent of the cattle on feed in feedlots with capacity of 1,000 or more head.

**Estimating Procedures:** These cattle on feed estimates were prepared by the Agricultural Statistics Board after reviewing recommendations and analysis submitted by each State office. Regional and State survey data were reviewed for reasonableness with each other and with estimates from the previous month when setting the current estimates.

**Revision Policy:** Revisions to previous estimates are made to improve month to month relationships. Estimates for the previous month are subject to revision in all States each month when current estimates are made. In February, all monthly estimates for the previous year, and the number of feedlots and annual marketings from two years ago are reviewed and subject to revisions. The reviews are primarily based on slaughter data, state check-off or brand data, and any other data that may have been received after the original estimate was made. Estimates will also be reviewed after data from the Census of Agriculture are available. No revisions will be made after that date and estimates become final.

**Reliability:** Since all 1000+ capacity cattle on feed operators in every State are not included in the monthly survey, survey estimates are subject to sampling variability. Survey results are also subject to non-sampling errors such as omissions, duplications, and mistakes in reporting, recording, and processing the data. The effects of these errors cannot be measured directly. They are minimized through rigid quality controls in the data collection process and through a careful review of all reported data for consistency and reasonableness.



## ACCESS TO REPORTS!!

---

For your convenience, there are several ways to obtain NASS reports, data products, and services:

### INTERNET ACCESS

All NASS reports are available free of charge on the worldwide Internet. For access, connect to the Internet and go to the NASS Home Page at: [www.usda.gov/nass/](http://www.usda.gov/nass/). Select "Today's Reports" or Publications and then Reports Calendar or Publications and then Search, by Title or Subject.

### E-MAIL SUBSCRIPTION

All NASS reports are available by subscription free of charge direct to your e-mail address. Starting with the NASS Home Page at [www.usda.gov/nass/](http://www.usda.gov/nass/), click on **Publications**, then click on the **Subscribe by E-mail** button which takes you to the page describing e-mail delivery of reports. Finally, click on **Go to the Subscription Page** and follow the instructions.

-----

### PRINTED REPORTS OR DATA PRODUCTS

**CALL OUR TOLL-FREE ORDER DESK: 800-999-6779 (U.S. and Canada)**  
**Other areas, please call 703-605-6220      FAX: 703-605-6900**  
**(Visa, MasterCard, check, or money order acceptable for payment.)**

-----

### ASSISTANCE

For **assistance** with general agricultural statistics or further information about NASS or its products or services, contact the **Agricultural Statistics Hotline** at **800-727-9540**, 7:30 a.m. to 4:00 p.m. ET, or e-mail: [nass@nass.usda.gov](mailto:nass@nass.usda.gov).

The U.S. Department of Agriculture (USDA) prohibits discrimination in all its programs and activities on the basis of race, color, national origin, age, disability, and where applicable, sex, marital status, familial status, parental status, religion, sexual orientation, genetic information, political beliefs, reprisal, or because all or part of an individual's income is derived from any public assistance program. (Not all prohibited bases apply to all programs.) Persons with disabilities who require alternative means for communication of program information (Braille, large print, audiotape, etc.) should contact USDA's TARGET Center at (202) 720-2600 (voice and TDD).

To file a complaint of discrimination, write to USDA, Director, Office of Civil Rights, 1400 Independence Avenue, S.W., Washington, D.C. 20250-9410, or call (800) 795-3272 (voice) or (202) 720-6382 (TDD). USDA is an equal opportunity provider and employer.