



# NASS

FACT FINDERS FOR AGRICULTURE  
UNITED STATES DEPARTMENT OF AGRICULTURE

Washington, D.C.

# Cattle On Feed

---

Released November 18, 2005, by the National Agricultural Statistics Service (NASS), Agricultural Statistics Board, U.S. Department of Agriculture. For information on *Cattle on Feed* call Mike Miller at (202) 720-3040, office hours 7:30 a.m. to 4:00 p.m. ET.

## U.S. Cattle on Feed Up 1 Percent

**Cattle and calves on feed** for slaughter market in the United States for feedlots with capacity of 1,000 or more head totaled 11.5 million head on November 1, 2005. The inventory was 1 percent above November 1, 2004 and 4 percent above November 1, 2003.

**Placements** in feedlots during October totaled 2.80 million, 3 percent above 2004 and 1 percent above 2003. Net placements were 2.74 million head. During October, placements of cattle and calves weighing less than 600 pounds were 880,000, 600-699 pounds were 790,000, 700-799 pounds were 600,000, and 800 pounds and greater were 525,000.

**Marketings** of fed cattle during October totaled 1.74 million, 3 percent below 2004 and 6 percent below 2003. This is the second lowest fed cattle marketings for the month of October since the series began in 1996.

**Other disappearance** totaled 58,000 during October, 12 percent below 2004 and 43 percent below 2003.

**Cattle on Feed: Number on Feed, Placements, Marketings, and  
Other Disappearance, 1,000+ Capacity Feedlots,  
United States, November 1, 2003-2005**

Item	Number			2005 as % of	
	2003	2004	2005	2003	2004
	<i>1,000 Head</i>	<i>1,000 Head</i>	<i>1,000 Head</i>	<i>Percent</i>	<i>Percent</i>
On Feed Oct 1 <sup>1</sup>	10,218	10,502	10,482	103	100
Placed on Feed During Oct	2,781	2,701	2,795	101	103
Fed Cattle Marketed During Oct	1,855	1,803	1,744	94	97
Other Disappearance During Oct <sup>2</sup>	101	66	58	57	88
On Feed Nov 1 <sup>1</sup>	11,043	11,334	11,475	104	101

<sup>1</sup> Cattle and calves on feed are animals for slaughter market being fed a ration of grain or other concentrates and are expected to produce a carcass that will grade select or better.

<sup>2</sup> Includes death loss, movement from feedlots to pasture, and shipments to other feedlots for further feeding.

**Cattle on Feed: Number on Feed, Placements, Marketings, and  
Other Disappearance, 1,000+ Capacity Feedlots,  
United States, October 1, 2003-2005**

Item	Number			2005 as % of	
	2003	2004	2005	2003	2004
	<i>1,000 Head</i>	<i>1,000 Head</i>	<i>1,000 Head</i>	<i>Percent</i>	<i>Percent</i>
On Feed Sep 1 <sup>1</sup>	9,839	9,988	10,000	102	100
Placed on Feed During Sep	2,474	2,375	2,355	95	99
Fed Cattle Marketed During Sep	2,032	1,800	1,816	89	101
Other Disappearance During Sep <sup>2</sup>	63	61	57	90	93
On Feed Oct 1 <sup>1</sup>	10,218	10,502	10,482	103	100

<sup>1</sup> Cattle and calves on feed are animals for slaughter market being fed a ration of grain or other concentrates and are expected to produce a carcass that will grade select or better.

<sup>2</sup> Includes death loss, movement from feedlots to pasture, and shipments to other feedlots for further feeding.

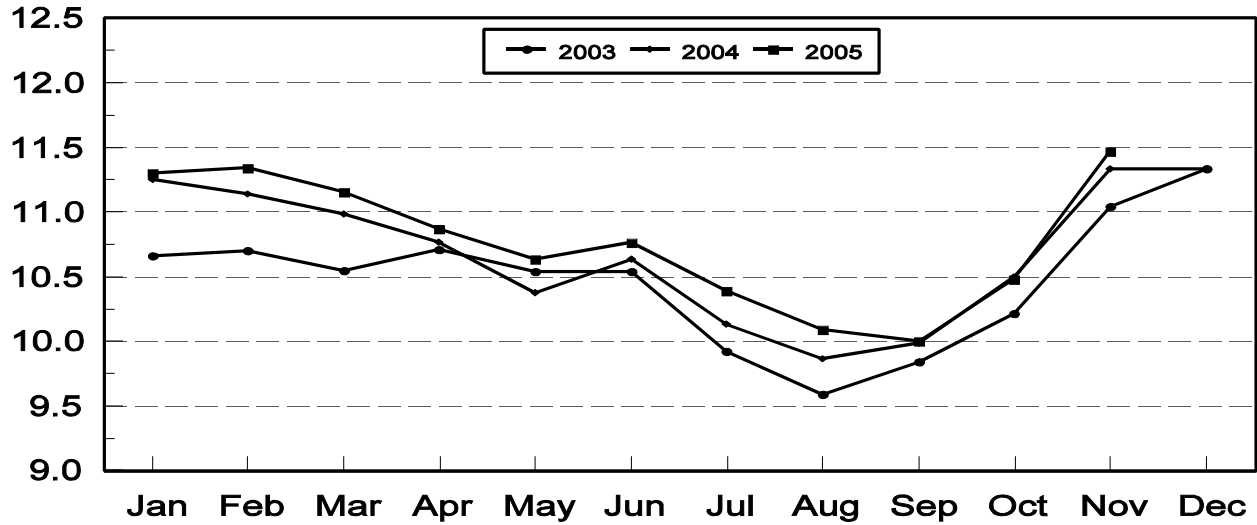
**Cattle on Feed: Number on Feed, 1,000+ Capacity Feedlots,  
by Month, State, and United States 2004-2005 <sup>1</sup>**

State	Nov 1, 2004	Oct 1, 2005	Nov 1, 2005		
			Number	as % of 2004	as % of Oct
	<i>1,000 Head</i>	<i>1,000 Head</i>	<i>1,000 Head</i>	<i>Percent</i>	<i>Percent</i>
AZ	321	318	325	101	102
CA	525	535	545	104	102
CO	1,090	900	1,030	94	114
ID	305	270	290	95	107
IA	430	410	475	110	116
KS	2,400	2,250	2,410	100	107
NE	2,210	1,940	2,280	103	118
NM	134	136	141	105	104
OK	360	335	360	100	107
SD	169	130	161	95	124
TX	2,880	2,830	2,970	103	105
WA	185	153	163	88	107
Oth Sts	325	275	325	100	118
US	11,334	10,482	11,475	101	109

<sup>1</sup> Cattle and calves on feed are animals for slaughter market being fed a ration of grain or other concentrates and are expected to produce a carcass that will grade select or better.

**United States Cattle on Feed  
1,000+ Capacity Feedlots**

Million Head



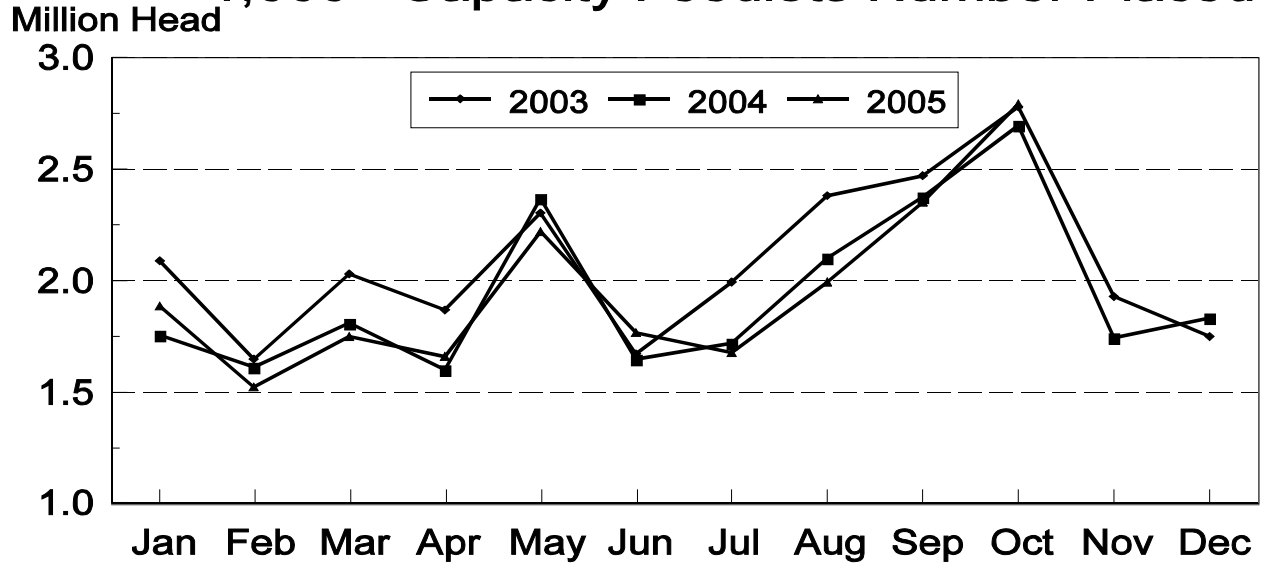
**Cattle on Feed: Number Placed on Feed, 1,000+ Capacity Feedlots,  
by Month, State, and United States 2004-2005**

State	During Oct 2004	During Sep 2005	During Oct 2005		
			Number	as % of 2004	as % of Sep
	<i>1,000 Head</i>	<i>1,000 Head</i>	<i>1,000 Head</i>	<i>Percent</i>	<i>Percent</i>
AZ	48	29	35	73	121
CA	70	68	64	91	94
CO	260	280	290	112	104
ID	78	69	76	97	110
IA	125	90	131	105	146
KS	570	510	580	102	114
NE	600	500	660	110	132
NM	29	26	22	76	85
OK	87	69	79	91	114
SD	65	40	68	105	170
TX	650	550	670	103	122
WA	43	40	34	79	85
Oth Sts	76	84	86	113	102
US	2,701	2,355	2,795	103	119

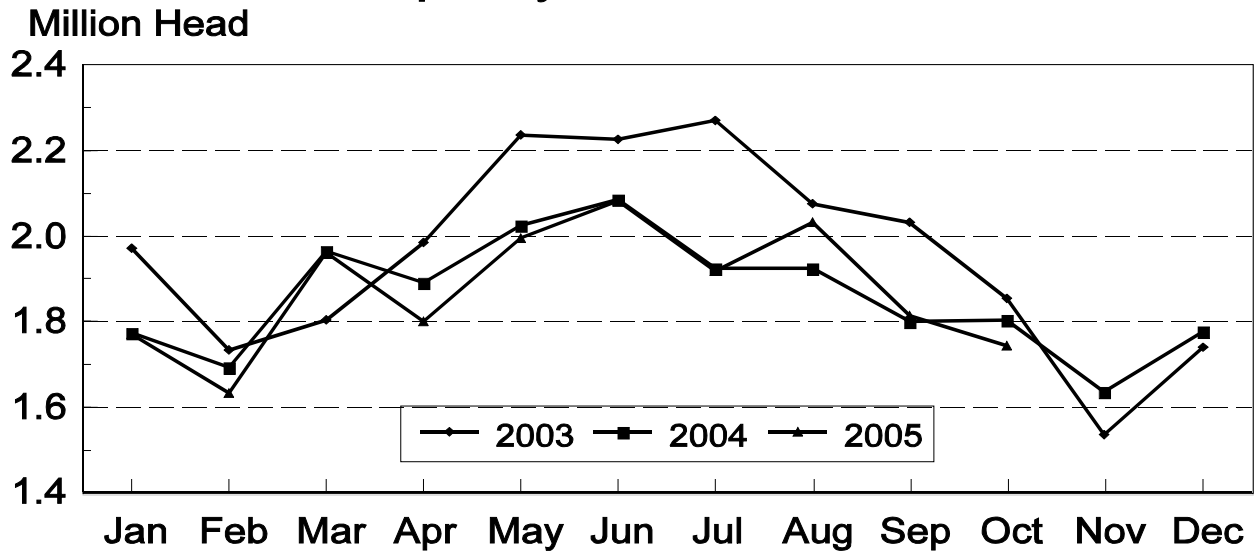
**Cattle on Feed: Number Placed on Feed by Weight Group, 1,000+ Capacity  
Feedlots, by Month, State, and United States, 2004-2005**

State	During October									
	Under 600		600-699		700-799		800 Plus		Total	
	2004	2005	2004	2005	2004	2005	2004	2005	2004	2005
	<i>1,000 Head</i>	<i>1,000 Head</i>	<i>1,000 Head</i>	<i>1,000 Head</i>	<i>1,000 Head</i>	<i>1,000 Head</i>	<i>1,000 Head</i>	<i>1,000 Head</i>	<i>1,000 Head</i>	<i>1,000 Head</i>
CO	85	75	65	65	50	65	60	85	260	290
KS	175	170	165	175	130	130	100	105	570	580
NE	187	220	189	200	103	120	121	120	600	660
TX	215	185	200	205	155	200	80	80	650	670
Oth Sts	250	230	145	145	91	85	135	135	621	595
US	912	880	764	790	529	600	496	525	2,701	2,795
	During September									
	Under 600		600-699		700-799		800 Plus		Total	
	2004	2005	2004	2005	2004	2005	2004	2005	2004	2005
	<i>1,000 Head</i>	<i>1,000 Head</i>	<i>1,000 Head</i>	<i>1,000 Head</i>	<i>1,000 Head</i>	<i>1,000 Head</i>	<i>1,000 Head</i>	<i>1,000 Head</i>	<i>1,000 Head</i>	<i>1,000 Head</i>
CO	30	30	50	45	60	70	125	135	265	280
KS	135	120	110	120	140	130	135	140	520	510
NE	88	85	70	90	102	120	210	205	470	500
TX	210	175	180	185	145	130	65	60	600	550
Oth Sts	165	155	65	65	105	100	185	195	520	515
US	628	565	475	505	552	550	720	735	2,375	2,355

## United States Cattle on Feed 1,000+ Capacity Feedlots Number Placed



## United States Cattle on Feed 1,000+ Capacity Feedlots Number Marketed



**Cattle on Feed: Number Marketed, 1,000+ Capacity Feedlots,  
by Month, State, and United States 2004-2005**

State	During Oct 2004	During Sep 2005	During Oct 2005		
			Number	as % of 2004	as % of Sep
	<i>1,000 Head</i>	<i>1,000 Head</i>	<i>1,000 Head</i>	<i>Percent</i>	<i>Percent</i>
AZ	21	24	27	129	113
CA	59	57	50	85	88
CO	185	145	155	84	107
ID	47	48	55	117	115
IA	68	74	65	96	88
KS	375	455	400	107	88
NE	325	320	310	95	97
NM	29	22	16	55	73
OK	64	53	53	83	100
SD	38	40	35	92	88
TX	520	510	520	100	102
WA	37	25	23	62	92
Oth Sts	35	43	35	100	81
US	1,803	1,816	1,744	97	96

**Cattle on Feed: Other Disappearance, 1,000+ Capacity Feedlots,  
by Month, State, and United States 2004-2005 <sup>1</sup>**

State	During Oct 2004	During Sep 2005	During Oct 2005		
			Number	as % of 2004	as % of Sep
	<i>1,000 Head</i>	<i>1,000 Head</i>	<i>1,000 Head</i>	<i>Percent</i>	<i>Percent</i>
AZ	4	1	1	25	100
CA	6	6	4	67	67
CO	5	5	5	100	100
ID	1	1	1	100	100
IA	2	1	1	50	100
KS	15	15	20	133	133
NE	5	10	10	200	100
NM	2	3	1	50	33
OK	3	1	1	33	100
SD	1	2	2	200	100
TX	20	10	10	50	100
WA	1	1	1	100	100
Oth Sts	1	1	1	100	100
US	66	57	58	88	102

<sup>1</sup> Includes death loss, movement from feedlots to pasture, and shipments to other feedlots for further feeding.

## Terms and Definitions of Cattle on Feed Estimates

**Cattle on feed** are animals being fed a ration of grain, silage, hay and/or protein supplement for slaughter market that are expected to produce a carcass that will grade select or better. It excludes cattle being "backgrounded only" for later sale as feeders or later placement in another feedlot.

**Placements** are cattle put into a feedlot, fed a ration which will produce a carcass that will grade select or better, and are intended for the slaughter market.

**Marketings** are cattle shipped out of feedlots to a slaughter market.

**Other disappearance** includes death loss, movement from feedlots to pasture, and shipments to other feedlots for further feeding.

## Reliability of Cattle on Feed Estimates

**Survey Procedures:** During January and July all known feedlots in the U.S. with capacity of 1,000 or more head are surveyed to provide data for cattle on feed estimates. During the other months, all known feedlots from 17 States are surveyed. The 17 States account for 98 percent of the cattle on feed in feedlots with capacity of 1,000 or more head.

**Estimating Procedures:** These cattle on feed estimates were prepared by the Agricultural Statistics Board after reviewing recommendations and analysis submitted by each State office. Regional and State survey data were reviewed for reasonableness with each other and with estimates from the previous month when setting the current estimates.

**Revision Policy:** Revisions to previous estimates are made to improve month to month relationships. Estimates for the previous month are subject to revision in all States each month when current estimates are made. In February, all monthly estimates for the previous year, and the number of feedlots and annual marketings from two years ago are reviewed and subject to revisions. The reviews are primarily based on slaughter data, state check-off or brand data, and any other data that may have been received after the original estimate was made. Estimates will also be reviewed after data from the Census of Agriculture are available. No revisions will be made after that date and estimates become final.

**Reliability:** Since all 1000+ capacity cattle on feed operators in every State are not included in the monthly survey, survey estimates are subject to sampling variability. Survey results are also subject to non-sampling errors such as omissions, duplications, and mistakes in reporting, recording, and processing the data. The effects of these errors cannot be measured directly. They are minimized through rigid quality controls in the data collection process and through a careful review of all reported data for consistency and reasonableness.

## ACCESS TO REPORTS!!

---

For your convenience, there are several ways to obtain NASS reports, data products, and services:

### INTERNET ACCESS

All NASS reports are available free of charge on the worldwide Internet. For access, connect to the Internet and go to the NASS Home Page at: [www.usda.gov/nass/](http://www.usda.gov/nass/). Select "Today's Reports" or Publications and then Reports Calendar or Publications and then Search, by Title or Subject.

### E-MAIL SUBSCRIPTION

All NASS reports are available by subscription free of charge direct to your e-mail address. Starting with the NASS Home Page at [www.usda.gov/nass/](http://www.usda.gov/nass/), click on **Publications**, then click on the **Subscribe by E-mail** button which takes you to the page describing e-mail delivery of reports. Finally, click on **Go to the Subscription Page** and follow the instructions.

-----

### PRINTED REPORTS OR DATA PRODUCTS

**CALL OUR TOLL-FREE ORDER DESK: 800-999-6779 (U.S. and Canada)**  
**Other areas, please call 703-605-6220      FAX: 703-605-6900**  
**(Visa, MasterCard, check, or money order acceptable for payment.)**

-----

### ASSISTANCE

For **assistance** with general agricultural statistics or further information about NASS or its products or services, contact the **Agricultural Statistics Hotline** at **800-727-9540**, 7:30 a.m. to 4:00 p.m. ET, or e-mail: [nass@nass.usda.gov](mailto:nass@nass.usda.gov).

The U.S. Department of Agriculture (USDA) prohibits discrimination in all its programs and activities on the basis of race, color, national origin, age, disability, and where applicable, sex, marital status, familial status, parental status, religion, sexual orientation, genetic information, political beliefs, reprisal, or because all or part of an individual's income is derived from any public assistance program. (Not all prohibited bases apply to all programs.) Persons with disabilities who require alternative means for communication of program information (Braille, large print, audiotape, etc.) should contact USDA's TARGET Center at (202) 720-2600 (voice and TDD).

To file a complaint of discrimination, write to USDA, Director, Office of Civil Rights, 1400 Independence Avenue, S.W., Washington, D.C. 20250-9410, or call (800) 795-3272 (voice) or (202) 720-6382 (TDD). USDA is an equal opportunity provider and employer.