



# Cattle On Feed

---

Released December 23, 2005, by the National Agricultural Statistics Service (NASS), Agricultural Statistics Board, U.S. Department of Agriculture. For information on *Cattle on Feed* call Mike Miller at (202) 720-3040, office hours 7:30 a.m. to 4:00 p.m. ET.

## U.S. Cattle on Feed Up 3 Percent

**Cattle and calves on feed** for slaughter market in the United States for feedlots with capacity of 1,000 or more head totaled 11.7 million head on December 1, 2005. The inventory was 3 percent above December 1, 2004 and 3 percent above December 1, 2003.

**Placements** in feedlots during November totaled 2.05 million, 17 percent above 2004 and 6 percent above 2003. Net placements were 1.95 million. During November, placements of cattle and calves weighing less than 600 pounds were 660,000, 600-699 pounds were 650,000, 700-799 pounds were 420,000, and 800 pounds and greater were 315,000.

**Marketings** of fed cattle during November totaled 1.70 million, 4 percent above 2004 and 11 percent above 2003.

**Other disappearance** totaled 91,000 during November, 16 percent below 2004 and 6 percent below 2003.

**Cattle on Feed: Number on Feed, Placements, Marketings, and  
Other Disappearance, 1,000+ Capacity Feedlots,  
United States, December 1, 2003-2005**

Item	Number			2005 as % of	
	2003	2004	2005	2003	2004
	<i>1,000 Head</i>	<i>1,000 Head</i>	<i>1,000 Head</i>	<i>Percent</i>	<i>Percent</i>
On Feed Nov 1 <sup>1</sup>	11,043	11,334	*11,473	104	101
Placed on Feed During Nov	1,926	1,743	2,045	106	117
Fed Cattle Marketed During Nov	1,537	1,635	1,701	111	104
Other Disappearance During Nov <sup>2</sup>	97	108	91	94	84
On Feed Dec 1 <sup>1</sup>	11,335	11,334	11,726	103	103

\* Revised.

<sup>1</sup> Cattle and calves on feed are animals for slaughter market being fed a ration of grain or other concentrates and are expected to produce a carcass that will grade select or better.

<sup>2</sup> Includes death loss, movement from feedlots to pasture, and shipments to other feedlots for further feeding.

**Cattle on Feed: Number on Feed, Placements, Marketings, and  
Other Disappearance, 1,000+ Capacity Feedlots,  
United States, November 1, 2003-2005**

Item	Number			2005 as % of	
	2003	2004	2005	2003	2004
	<i>1,000 Head</i>	<i>1,000 Head</i>	<i>1,000 Head</i>	<i>Percent</i>	<i>Percent</i>
On Feed Oct 1 <sup>1</sup>	10,218	10,502	10,482	103	100
Placed on Feed During Oct	2,781	2,701	*2,788	100	103
Fed Cattle Marketed During Oct	1,855	1,803	*1,739	94	96
Other Disappearance During Oct <sup>2</sup>	101	66	58	57	88
On Feed Nov 1 <sup>1</sup>	11,043	11,334	*11,473	104	101

\* Revised.

<sup>1</sup> Cattle and calves on feed are animals for slaughter market being fed a ration of grain or other concentrates and are expected to produce a carcass that will grade select or better.

<sup>2</sup> Includes death loss, movement from feedlots to pasture, and shipments to other feedlots for further feeding.

**Cattle on Feed: Number on Feed, 1,000+ Capacity Feedlots,  
by Month, State, and United States 2004-2005 <sup>1</sup>**

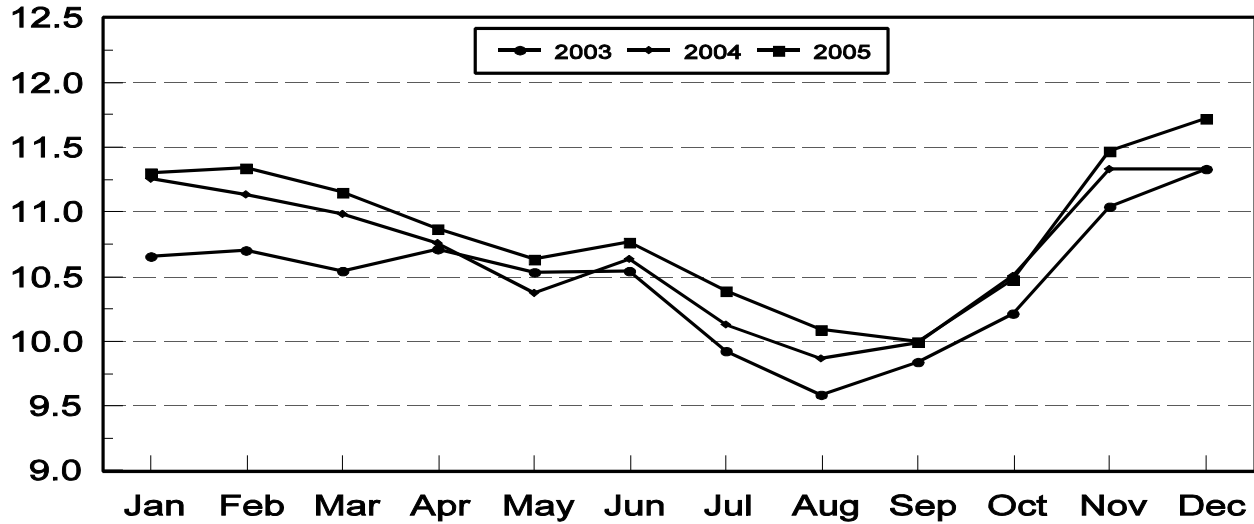
State	Dec 1, 2004	Nov 1, 2005	Dec 1, 2005		
			Number	as % of 2004	as % of Nov
	<i>1,000 Head</i>	<i>1,000 Head</i>	<i>1,000 Head</i>	<i>Percent</i>	<i>Percent</i>
AZ	329	*323	328	100	102
CA	530	545	550	104	101
CO	1,100	1,030	1,070	97	104
ID	305	290	280	92	97
IA	435	475	500	115	105
KS	2,390	2,410	2,470	103	102
NE	2,300	2,280	2,400	104	105
NM	129	141	137	106	97
OK	355	360	365	103	101
SD	186	161	190	102	118
TX	2,740	2,970	2,940	107	99
WA	185	163	161	87	99
Oth Sts	350	325	335	96	103
US	11,334	*11,473	11,726	103	102

\* Revised.

<sup>1</sup> Cattle and calves on feed are animals for slaughter market being fed a ration of grain or other concentrates and are expected to produce a carcass that will grade select or better.

**United States Cattle on Feed  
1,000+ Capacity Feedlots**

Million Head



**Cattle on Feed: Number Placed on Feed, 1,000+ Capacity Feedlots,  
by Month, State, and United States 2004-2005**

State	During Nov 2004	During Oct 2005	During Nov 2005		
			Number	as % of 2004	as % of Oct
	<i>1,000 Head</i>	<i>1,000 Head</i>	<i>1,000 Head</i>	<i>Percent</i>	<i>Percent</i>
AZ	35	*33	35	100	106
CA	66	64	66	100	103
CO	175	*285	165	94	58
ID	50	76	49	98	64
IA	90	131	108	120	82
KS	390	580	465	119	80
NE	410	660	440	107	67
NM	14	22	18	129	82
OK	43	79	68	158	86
SD	51	68	63	124	93
TX	320	670	495	155	74
WA	37	34	27	73	79
Oth Sts	62	86	46	74	53
US	1,743	*2,788	2,045	117	73

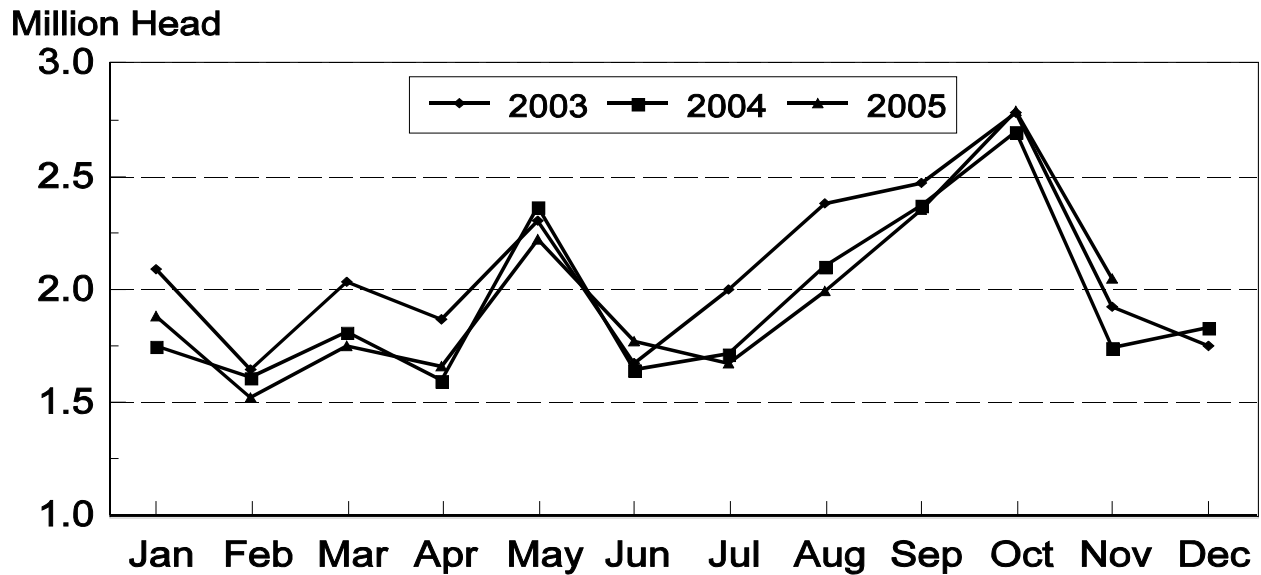
\* Revised

**Cattle on Feed: Number Placed on Feed by Weight Group, 1,000+ Capacity  
Feedlots, by Month, State, and United States, 2004-2005**

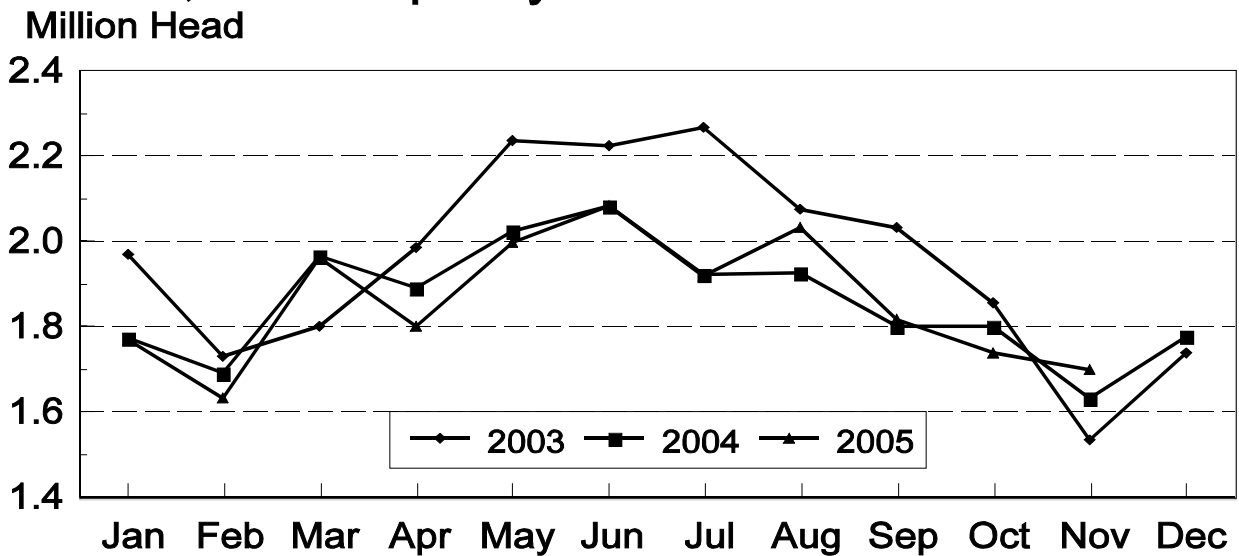
State	During November									
	Under 600		600-699		700-799		800 Plus		Total	
	2004	2005	2004	2005	2004	2005	2004	2005	2004	2005
	<i>1,000 Head</i>	<i>1,000 Head</i>	<i>1,000 Head</i>	<i>1,000 Head</i>	<i>1,000 Head</i>	<i>1,000 Head</i>	<i>1,000 Head</i>	<i>1,000 Head</i>	<i>1,000 Head</i>	<i>1,000 Head</i>
CO	60	45	55	60	35	35	25	25	175	165
KS	115	155	125	145	90	100	60	65	390	465
NE	115	120	157	145	66	85	72	90	410	440
TX	115	160	105	170	70	120	30	45	320	495
Oth Sts	185	180	115	130	65	80	83	90	448	480
US	590	660	557	650	326	420	270	315	1,743	2,045
	During October									
	Under 600		600-699		700-799		800 Plus		Total	
	2004	2005	2004	2005	2004	2005	2004	2005	2004	2005
	<i>1,000 Head</i>	<i>1,000 Head</i>	<i>1,000 Head</i>	<i>1,000 Head</i>	<i>1,000 Head</i>	<i>1,000 Head</i>	<i>1,000 Head</i>	<i>1,000 Head</i>	<i>1,000 Head</i>	<i>1,000 Head</i>
CO	85	75	65	65	50	*60	60	85	260	*285
KS	175	170	165	175	130	130	100	105	570	580
NE	187	220	189	200	103	120	121	120	600	660
TX	215	185	200	205	155	200	80	80	650	670
Oth Sts	250	230	145	145	91	*83	135	135	621	*593
US	912	880	764	790	529	*593	496	525	2,701	*2,788

\* Revised

## United States Cattle on Feed 1,000+ Capacity Feedlots Number Placed



## United States Cattle on Feed 1,000+ Capacity Feedlots Number Marketed



**Cattle on Feed: Number Marketed, 1,000+ Capacity Feedlots,  
by Month, State, and United States 2004-2005**

State	During Nov 2004	During Oct 2005	During Nov 2005		
			Number	as % of 2004	as % of Oct
	<i>1,000 Head</i>	<i>1,000 Head</i>	<i>1,000 Head</i>	<i>Percent</i>	<i>Percent</i>
AZ	23	27	29	126	107
CA	53	50	53	100	106
CO	155	*150	115	74	77
ID	48	55	57	119	104
IA	82	65	80	98	123
KS	370	400	375	101	94
NE	310	310	305	98	98
NM	16	16	20	125	125
OK	44	53	62	141	117
SD	33	35	33	100	94
TX	430	520	510	119	98
WA	36	23	28	78	122
Oth Sts	35	35	34	97	97
US	1,635	*1,739	1,701	104	98

\* Revised.

**Cattle on Feed: Other Disappearance, 1,000+ Capacity Feedlots,  
by Month, State, and United States 2004-2005 <sup>1</sup>**

State	During Nov 2004	During Oct 2005	During Nov 2005		
			Number	as % of 2004	as % of Oct
	<i>1,000 Head</i>	<i>1,000 Head</i>	<i>1,000 Head</i>	<i>Percent</i>	<i>Percent</i>
AZ	4	1	1	25	100
CA	8	4	8	100	200
CO	10	5	10	100	200
ID	2	1	2	100	200
IA	3	1	3	100	300
KS	30	20	30	100	150
NE	10	10	15	150	150
NM	3	1	2	67	200
OK	4	1	1	25	100
SD	1	2	1	100	50
TX	30	10	15	50	150
WA	1	1	1	100	100
Oth Sts	2	1	2	100	200
US	108	58	91	84	157

<sup>1</sup> Includes death loss, movement from feedlots to pasture, and shipments to other feedlots for further feeding.

## Terms and Definitions of Cattle on Feed Estimates

**Cattle on feed** are animals being fed a ration of grain, silage, hay and/or protein supplement for slaughter market that are expected to produce a carcass that will grade select or better. It excludes cattle being "backgrounded only" for later sale as feeders or later placement in another feedlot.

**Placements** are cattle put into a feedlot, fed a ration which will produce a carcass that will grade select or better, and are intended for the slaughter market.

**Marketings** are cattle shipped out of feedlots to a slaughter market.

**Other disappearance** includes death loss, movement from feedlots to pasture, and shipments to other feedlots for further feeding.

## Reliability of Cattle on Feed Estimates

**Survey Procedures:** During January and July all known feedlots in the U.S. with capacity of 1,000 or more head are surveyed to provide data for cattle on feed estimates. During the other months, all known feedlots from 17 States are surveyed. The 17 States account for 98 percent of the cattle on feed in feedlots with capacity of 1,000 or more head.

**Estimating Procedures:** These cattle on feed estimates were prepared by the Agricultural Statistics Board after reviewing recommendations and analysis submitted by each State office. Regional and State survey data were reviewed for reasonableness with each other and with estimates from the previous month when setting the current estimates.

**Revision Policy:** Revisions to previous estimates are made to improve month to month relationships. Estimates for the previous month are subject to revision in all States each month when current estimates are made. In February, all monthly estimates for the previous year, and the number of feedlots and annual marketings from two years ago are reviewed and subject to revisions. The reviews are primarily based on slaughter data, state check-off or brand data, and any other data that may have been received after the original estimate was made. Estimates will also be reviewed after data from the Census of Agriculture are available. No revisions will be made after that date and estimates become final.

**Reliability:** Since all 1000+ capacity cattle on feed operators in every State are not included in the monthly survey, survey estimates are subject to sampling variability. Survey results are also subject to non-sampling errors such as omissions, duplications, and mistakes in reporting, recording, and processing the data. The effects of these errors cannot be measured directly. They are minimized through rigid quality controls in the data collection process and through a careful review of all reported data for consistency and reasonableness.

## ACCESS TO REPORTS!!

---

For your convenience, there are several ways to obtain NASS reports, data products, and services:

### INTERNET ACCESS

All NASS reports are available free of charge on the worldwide Internet. For access, connect to the Internet and go to the NASS Home Page at: [www.usda.gov/nass/](http://www.usda.gov/nass/). Select "Today's Reports" or Publications and then Reports Calendar or Publications and then Search, by Title or Subject.

### E-MAIL SUBSCRIPTION

All NASS reports are available by subscription free of charge direct to your e-mail address. Starting with the NASS Home Page at [www.usda.gov/nass/](http://www.usda.gov/nass/), click on **Publications**, then click on the **Subscribe by E-mail** button which takes you to the page describing e-mail delivery of reports. Finally, click on **Go to the Subscription Page** and follow the instructions.

-----

### PRINTED REPORTS OR DATA PRODUCTS

**CALL OUR TOLL-FREE ORDER DESK: 800-999-6779 (U.S. and Canada)**  
**Other areas, please call 703-605-6220      FAX: 703-605-6900**  
**(Visa, MasterCard, check, or money order acceptable for payment.)**

-----

### ASSISTANCE

For **assistance** with general agricultural statistics or further information about NASS or its products or services, contact the **Agricultural Statistics Hotline** at **800-727-9540**, 7:30 a.m. to 4:00 p.m. ET, or e-mail: [nass@nass.usda.gov](mailto:nass@nass.usda.gov).

The U.S. Department of Agriculture (USDA) prohibits discrimination in all its programs and activities on the basis of race, color, national origin, age, disability, and where applicable, sex, marital status, familial status, parental status, religion, sexual orientation, genetic information, political beliefs, reprisal, or because all or part of an individual's income is derived from any public assistance program. (Not all prohibited bases apply to all programs.) Persons with disabilities who require alternative means for communication of program information (Braille, large print, audiotape, etc.) should contact USDA's TARGET Center at (202) 720-2600 (voice and TDD).

To file a complaint of discrimination, write to USDA, Director, Office of Civil Rights, 1400 Independence Avenue, S.W., Washington, D.C. 20250-9410, or call (800) 795-3272 (voice) or (202) 720-6382 (TDD). USDA is an equal opportunity provider and employer.