



NASS

FACT FINDERS FOR AGRICULTURE
UNITED STATES DEPARTMENT OF AGRICULTURE

Washington, D.C.

Cattle On Feed

Released January 20, 2006, by the National Agricultural Statistics Service (NASS), Agricultural Statistics Board, U.S. Department of Agriculture. For information on *Cattle on Feed* call Mike Miller at (202) 720-3040, office hours 7:30 a.m. to 4:00 p.m. ET.

U.S. Cattle on Feed Up 4 Percent

Cattle and calves on feed for slaughter market in the United States for feedlots with capacity of 1,000 or more head totaled 11.8 million head on January 1, 2006. The inventory was 4 percent above January 1, 2005 and 5 percent above January 1, 2004. The inventory included 7.57 million steers and steer calves, up 6 percent from the previous year. This group accounted for 64 percent of the total inventory. Heifers and heifer calves accounted for 4.15 million head, up 2 percent from January 1, 2005.

Placements in feedlots during December totaled 1.88 million, 3 percent above 2004 and 8 percent above 2003. This is the highest placements for the month of December since the series began in 1996. Net placements were 1.79 million. During December, placements of cattle and calves weighing less than 600 pounds were 575,000, 600-699 pounds were 554,000, 700-799 pounds were 430,000, and 800 pounds and greater were 325,000.

Marketings of fed cattle during December totaled 1.72 million, 3 percent below 2004 and 1 percent below 2003.

Other disappearance totaled 91,000 during December, 1 percent below 2004 but 1 percent above 2003.

**Cattle on Feed: Number on Feed, Placements, Marketings, and
Other Disappearance, 1,000+ Capacity Feedlots,
United States, January 1, 2004-2006**

Item	Number			2006 as % of	
	2004	2005	2006	2004	2005
	<i>1,000 Head</i>	<i>1,000 Head</i>	<i>1,000 Head</i>	<i>Percent</i>	<i>Percent</i>
On Feed Dec 1 ^{1 2}	11,335	11,334	11,726	103	103
Placed on Feed During Dec ²	1,748	1,834	1,884	108	103
Fed Cattle Marketed During Dec ²	1,740	1,777	1,715	99	97
Other Disappearance During Dec ^{2 3}	90	92	91	101	99
On Feed Jan 1 ¹	11,253	11,299	11,804	105	104

¹ Cattle and calves on feed are animals for slaughter market being fed a ration of grain or other concentrates and are expected to produce a carcass that will grade select or better.

² December preceding year.

³ Includes death loss, movement from feedlots to pasture, and shipments to other feedlots for further feeding.

**Cattle on Feed: Number on Feed, Placements, Marketings, and
Other Disappearance, 1,000+ Capacity Feedlots,
United States, December 1, 2003-2005**

Item	Number			2005 as % of	
	2003	2004	2005	2003	2004
	<i>1,000 Head</i>	<i>1,000 Head</i>	<i>1,000 Head</i>	<i>Percent</i>	<i>Percent</i>
On Feed Nov 1 ¹	11,043	11,334	11,473	104	101
Placed on Feed During Nov	1,926	1,743	2,045	106	117
Fed Cattle Marketed During Nov	1,537	1,635	1,701	111	104
Other Disappearance During Nov ²	97	108	91	94	84
On Feed Dec 1 ¹	11,335	11,334	11,726	103	103

¹ Cattle and calves on feed are animals for slaughter market being fed a ration of grain or other concentrates and are expected to produce a carcass that will grade select or better.

² Includes death loss, movement from feedlots to pasture, and shipments to other feedlots for further feeding.

**Cattle on Feed: Number on Feed by Class, 1,000+ Capacity Feedlots,
United States, January 1, 2004-2006**

Item	Number			2006 as % of	
	2004	2005	2006	2004	2005
	<i>1,000 Head</i>	<i>1,000 Head</i>	<i>1,000 Head</i>	<i>Percent</i>	<i>Percent</i>
Class on Feed Jan 1					
Steers and Steer Calves	6,845	7,175	7,570	111	106
Heifers and Heifer Calves	4,330	4,046	4,147	96	102
Cows and Bulls	78	78	87	112	112

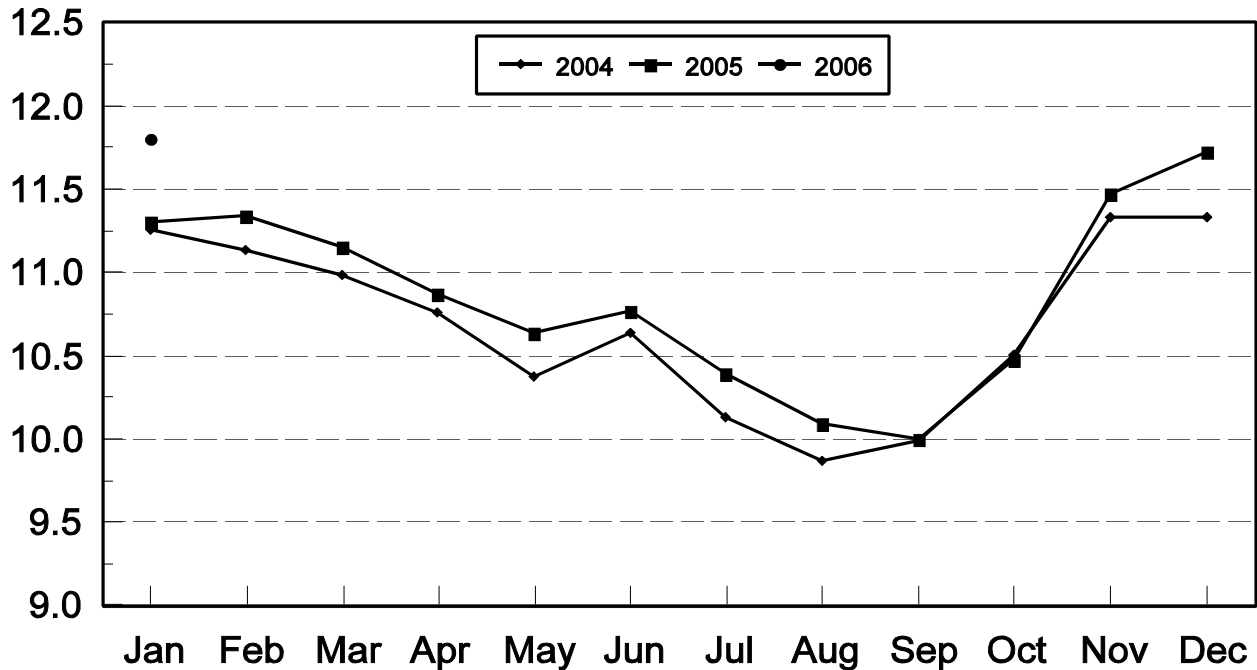
**Cattle on Feed: Number on Feed, 1,000+ Capacity Feedlots,
by Month, State, and United States 2005-2006 ¹**

State	Jan 1, 2005	Dec 1, 2005	Jan 1, 2006		
			Number	as % of 2005	as % of Dec
	<i>1,000 Head</i>	<i>1,000 Head</i>	<i>1,000 Head</i>	<i>Percent</i>	<i>Percent</i>
AZ	331	328	334	101	102
CA	535	550	550	103	100
CO	1,080	1,070	1,080	100	101
ID	295	280	275	93	98
IA	450	500	510	113	102
KS	2,410	2,470	2,500	104	101
NE	2,300	2,400	2,430	106	101
NM	126	137	143	113	104
OK	350	365	370	106	101
SD	192	190	205	107	108
TX	2,700	2,940	2,920	108	99
WA	190	161	152	80	94
Oth Sts	340	335	335	99	100
US	11,299	11,726	11,804	104	101

¹ Cattle and calves on feed are animals for slaughter market being fed a ration of grain or other concentrates and are expected to produce a carcass that will grade select or better.

United States Cattle on Feed 1,000+ Capacity Feedlots

Million Head



**Cattle on Feed: Number Placed on Feed, 1,000+ Capacity Feedlots,
by Month, State, and United States 2004-2005**

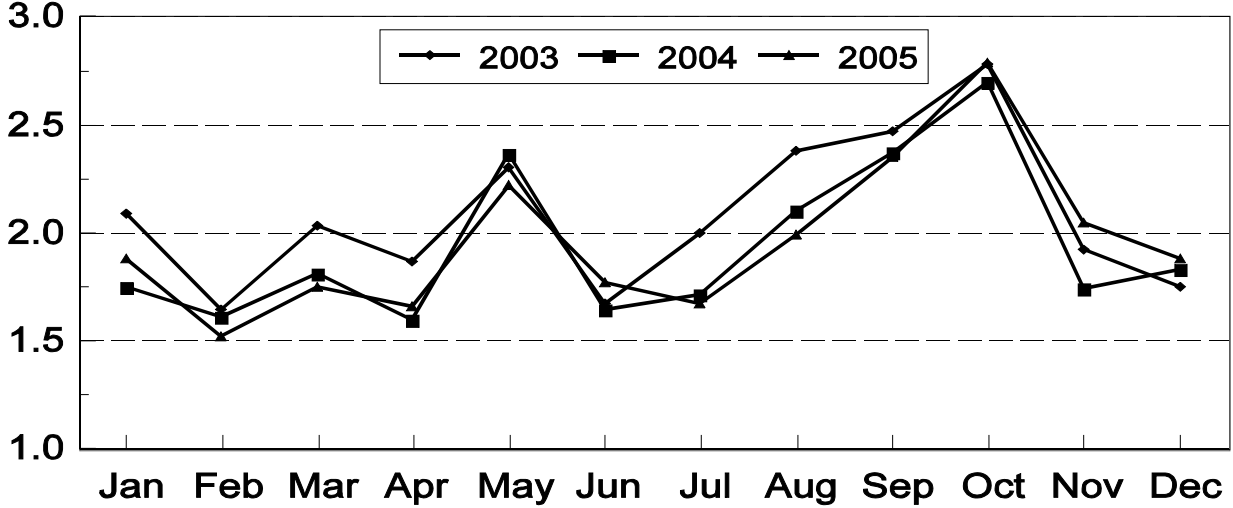
State	During Dec 2004	During Nov 2005	During Dec 2005		
			Number	as % of 2004	as % of Nov
	<i>1,000 Head</i>	<i>1,000 Head</i>	<i>1,000 Head</i>	<i>Percent</i>	<i>Percent</i>
AZ	33	35	35	106	100
CA	72	66	69	96	105
CO	135	165	155	115	94
ID	55	49	48	87	98
IA	71	108	65	92	60
KS	490	465	495	101	106
NE	390	440	350	90	80
NM	14	18	20	143	111
OK	53	68	64	121	94
SD	42	63	46	110	73
TX	405	495	465	115	94
WA	39	27	26	67	96
Oth Sts	35	46	46	131	100
US	1,834	2,045	1,884	103	92

**Cattle on Feed: Number Placed on Feed by Weight Group, 1,000+ Capacity
Feedlots, by Month, State, and United States, 2004-2005**

State	During December									
	Under 600		600-699		700-799		800 Plus		Total	
	2004	2005	2004	2005	2004	2005	2004	2005	2004	2005
	<i>1,000 Head</i>	<i>1,000 Head</i>	<i>1,000 Head</i>	<i>1,000 Head</i>	<i>1,000 Head</i>	<i>1,000 Head</i>	<i>1,000 Head</i>	<i>1,000 Head</i>	<i>1,000 Head</i>	<i>1,000 Head</i>
CO	25	35	40	45	45	45	25	30	135	155
KS	100	120	175	150	135	135	80	90	490	495
NE	60	60	117	100	114	100	99	90	390	350
TX	130	200	135	165	110	70	30	30	405	465
Oth Sts	150	160	91	94	85	80	88	85	414	419
US	465	575	558	554	489	430	322	325	1,834	1,884
	During November									
	Under 600		600-699		700-799		800 Plus		Total	
	2004	2005	2004	2005	2004	2005	2004	2005	2004	2005
	<i>1,000 Head</i>	<i>1,000 Head</i>	<i>1,000 Head</i>	<i>1,000 Head</i>	<i>1,000 Head</i>	<i>1,000 Head</i>	<i>1,000 Head</i>	<i>1,000 Head</i>	<i>1,000 Head</i>	<i>1,000 Head</i>
CO	60	45	55	60	35	35	25	25	175	165
KS	115	155	125	145	90	100	60	65	390	465
NE	115	120	157	145	66	85	72	90	410	440
TX	115	160	105	170	70	120	30	45	320	495
Oth Sts	185	180	115	130	65	80	83	90	448	480
US	590	660	557	650	326	420	270	315	1,743	2,045

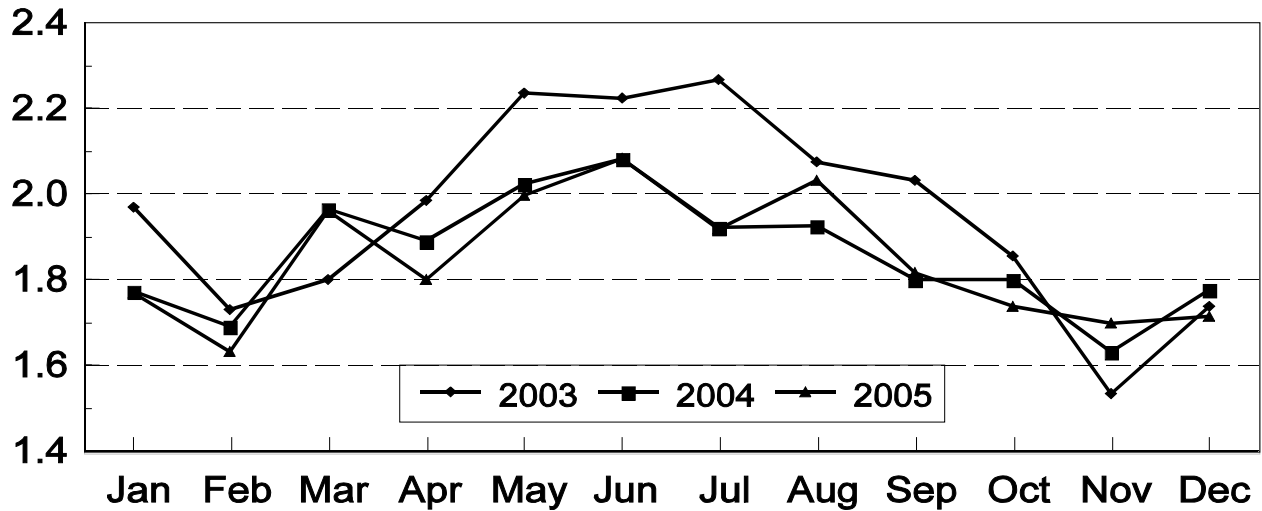
United States Cattle on Feed 1,000+ Capacity Feedlots Number Placed

Million Head



United States Cattle on Feed 1,000+ Capacity Feedlots Number Marketed

Million Head



**Cattle on Feed: Number Marketed, 1,000+ Capacity Feedlots,
by Month, State, and United States 2004-2005**

State	During Dec 2004	During Nov 2005	During Dec 2005		
			Number	as % of 2004	as % of Nov
	<i>1,000 Head</i>	<i>1,000 Head</i>	<i>1,000 Head</i>	<i>Percent</i>	<i>Percent</i>
AZ	30	29	27	90	93
CA	62	53	60	97	113
CO	145	115	140	97	122
ID	62	57	50	81	88
IA	55	80	53	96	66
KS	450	375	435	97	116
NE	380	305	305	80	100
NM	15	20	13	87	65
OK	52	62	57	110	92
SD	34	33	28	82	85
TX	420	510	470	112	92
WA	32	28	34	106	121
Oth Sts	40	34	43	108	126
US	1,777	1,701	1,715	97	101

**Cattle on Feed: Other Disappearance, 1,000+ Capacity Feedlots,
by Month, State, and United States 2004-2005 ¹**

State	During Dec 2004	During Nov 2005	During Dec 2005		
			Number	as % of 2004	as % of Nov
	<i>1,000 Head</i>	<i>1,000 Head</i>	<i>1,000 Head</i>	<i>Percent</i>	<i>Percent</i>
AZ	1	1	2	200	200
CA	5	8	9	180	113
CO	10	10	5	50	50
ID	3	2	3	100	150
IA	1	3	2	200	67
KS	20	30	30	150	100
NE	10	15	15	150	100
NM	2	2	1	50	50
OK	6	1	2	33	200
SD	2	1	3	150	300
TX	25	15	15	60	100
WA	2	1	1	50	100
Oth Sts	5	2	3	60	150
US	92	91	91	99	100

¹ Includes death loss, movement from feedlots to pasture, and shipments to other feedlots for further feeding.

**Cattle on Feed: Number on Feed by Class, 1,000+ Capacity Feedlots,
by Quarter, State, and United States, 2005-2006**

State	Steers & Steer Calves			Heifers & Heifer Calves			Cows and Bulls		
	Jan 1, 2005	Oct 1, 2005	Jan 1, 2006	Jan 1, 2005	Oct 1, 2005	Jan 1, 2006	Jan 1, 2005	Oct 1, 2005	Jan 1, 2006
	<i>1,000 Head</i>	<i>1,000 Head</i>	<i>1,000 Head</i>	<i>1,000 Head</i>	<i>1,000 Head</i>	<i>1,000 Head</i>	<i>1,000 Head</i>	<i>1,000 Head</i>	<i>1,000 Head</i>
AZ	323	316	332	7	2	2	1	0	0
CA	495	505	506	40	30	44	0	0	0
CO	665	585	690	410	310	380	5	5	10
ID	184	166	167	111	101	106	0	3	2
IA	305	280	340	144	129	169	1	1	1
KS	1,310	1,330	1,390	1,080	900	1,090	20	20	20
NE	1,390	1,140	1,460	890	790	950	20	10	20
NM	80	76	78	46	60	65	0	0	0
OK	225	235	265	125	100	105	0	0	0
SD	98	64	105	74	56	73	20	10	27
TX	1,750	1,880	1,900	947	947	1,017	3	3	3
WA	110	90	92	79	62	59	1	1	1
Oth Sts	240	205	245	93	66	87	7	4	3
US	7,175	6,872	7,570	4,046	3,553	4,147	78	57	87

Terms and Definitions of Cattle on Feed Estimates

Cattle on feed are animals being fed a ration of grain, silage, hay and/or protein supplement for slaughter market that are expected to produce a carcass that will grade select or better. It excludes cattle being "backgrounded only" for later sale as feeders or later placement in another feedlot.

Placements are cattle put into a feedlot, fed a ration which will produce a carcass that will grade select or better, and are intended for the slaughter market.

Marketings are cattle shipped out of feedlots to a slaughter market.

Other disappearance includes death loss, movement from feedlots to pasture, and shipments to other feedlots for further feeding.

Reliability of Cattle on Feed Estimates

Survey Procedures: During January and July all known feedlots in the U.S. with capacity of 1,000 or more head are surveyed to provide data for cattle on feed estimates. During the other months, all known feedlots from 17 States are surveyed. The 17 States account for 98 percent of the cattle on feed in feedlots with capacity of 1,000 or more head.

Estimating Procedures: These cattle on feed estimates were prepared by the Agricultural Statistics Board after reviewing recommendations and analysis submitted by each State office. Regional and State survey data were reviewed for reasonableness with each other and with estimates from the previous month when setting the current estimates.

Revision Policy: Revisions to previous estimates are made to improve month to month relationships. Estimates for the previous month are subject to revision in all States each month when current estimates are made. In February, all monthly estimates for the previous year, and the number of feedlots and annual marketings from two years ago are reviewed and subject to revisions. The reviews are primarily based on slaughter data, state check-off or brand data, and any other data that may have been received after the original estimate was made. Estimates will also be reviewed after data from the Census of Agriculture are available. No revisions will be made after that date and estimates become final.

Reliability: Since all 1000+ capacity cattle on feed operators in every State are not included in the monthly survey, survey estimates are subject to sampling variability. Survey results are also subject to non-sampling errors such as omissions, duplications, and mistakes in reporting, recording, and processing the data. The effects of these errors cannot be measured directly. They are minimized through rigid quality controls in the data collection process and through a careful review of all reported data for consistency and reasonableness.

To assist users in evaluating the reliability of estimates in this report, the "**Root Mean Square Error**" is shown for selected items in the following table. The "Root Mean Square Error" is a statistical measure based on past performance and is computed using the differences between first and latest estimates. The "Root Mean Square Error" for cattle on feed inventory estimates over the

past 10 years is .3 percent. This means that chances are 2 out of 3 that the final estimate will not be above or below the current estimate of 11.8 million head by more than .3 percent. Chances are 9 out of 10 that the difference will not exceed .5 percent.

The following table also shows a 10 year record of the range of differences between first and latest estimates for selected items. Using estimates of number on feed as an example, changes between the first estimate and the latest estimate during the past 10 years have averaged 18,000 head, ranging from 0 to 70,000 head. During this period the initial estimate has been below the final estimate 5 times, and above the final estimate 1 time. This does not imply that the initial estimate is likely to understate or overstate final inventory.

Reliability of U.S. January 1 Cattle on Feed Estimates ¹

Item	Root Mean Square Error	90% Confidence Level		Difference Between First and Final Estimates ¹			Number of Years	
		Percent	(000) Head	Average	Smallest	Largest	First Above Final	First Below Final
	<i>Percent</i>	<i>Percent</i>	<i>1,000 Head</i>	<i>1,000 Head</i>	<i>1,000 Head</i>	<i>1,000 Head</i>	<i>Number</i>	<i>Number</i>
Number on Feed	0.3	0.5	58.4	18	0	70	1	5
Placements	0.5	0.9	17.8	4	0	20	0	3
Marketings	0.2	0.3	5.6	1	0	10	1	2

¹ Based on data for the past 10 years.

ACCESS TO REPORTS!!

For your convenience, there are several ways to obtain NASS reports, data products, and services:

INTERNET ACCESS

All NASS reports are available free of charge on the worldwide Internet. For access, connect to the Internet and go to the NASS Home Page at: www.nass.usda.gov.

E-MAIL SUBSCRIPTION

All NASS reports are available by subscription free of charge direct to your e-mail address. Starting with the NASS Home Page at www.nass.usda.gov, under the right navigation, *Receive reports by Email*, click on **National** or **State**. Follow the instructions on the screen.

PRINTED REPORTS OR DATA PRODUCTS

CALL OUR TOLL-FREE ORDER DESK: 800-999-6779 (U.S. and Canada)
Other areas, please call 703-605-6220 FAX: 703-605-6900
(Visa, MasterCard, check, or money order acceptable for payment.)

ASSISTANCE

For **assistance** with general agricultural statistics or further information about NASS or its products or services, contact the **Agricultural Statistics Hotline** at **800-727-9540**, 7:30 a.m. to 4:00 p.m. ET, or e-mail: nass@nass.usda.gov.

The U.S. Department of Agriculture (USDA) prohibits discrimination in all its programs and activities on the basis of race, color, national origin, age, disability, and where applicable, sex, marital status, familial status, parental status, religion, sexual orientation, genetic information, political beliefs, reprisal, or because all or part of an individual's income is derived from any public assistance program. (Not all prohibited bases apply to all programs.) Persons with disabilities who require alternative means for communication of program information (Braille, large print, audiotape, etc.) should contact USDA's TARGET Center at (202) 720-2600 (voice and TDD).

To file a complaint of discrimination, write to USDA, Director, Office of Civil Rights, 1400 Independence Avenue, S.W., Washington, D.C. 20250-9410, or call (800) 795-3272 (voice) or (202) 720-6382 (TDD). USDA is an equal opportunity provider and employer.