



NASS

FACT FINDERS FOR AGRICULTURE
UNITED STATES DEPARTMENT OF AGRICULTURE

Washington, D.C.

Cattle On Feed

Released February 24, 2006, by the National Agricultural Statistics Service (NASS), Agricultural Statistics Board, U.S. Department of Agriculture. For information on *Cattle on Feed* call Mike Miller at (202) 720-3040, office hours 7:30 a.m. to 4:00 p.m. ET.

U.S. Cattle on Feed Up 7 Percent

Cattle and calves on feed for slaughter market in the United States for feedlots with capacity of 1,000 or more head totaled 12.1 million head on February 1, 2006. The inventory was 7 percent above February 1, 2005 and 9 percent above February 1, 2004.

Placements in feedlots during January totaled 2.20 million, 16 percent above 2005 and 25 percent above 2004. Net placements were 2.12 million. During January, placements of cattle and calves weighing less than 600 pounds were 530,000, 600-699 pounds were 447,000, 700-799 pounds were 702,000, and 800 pounds and greater were 520,000.

Marketings of fed cattle during January totaled 1.81 million, up 2 percent from 2005 and up 2 percent from 2004.

Other disappearance totaled 83,000 during January, 14 percent above 2005 but 12 percent below 2004.

2005 Cattle on Feed and Annual Size Group Estimates

This report contains the 2005 monthly cattle on feed estimates for feedlots with capacity of 1,000 or more head. Also included are the number of feedlots, inventory, and annual marketings by size group for 2004 and 2005. Data for total U.S. capacity of 1,000 or more head feedlots are also published in this issue. These data are measured by the number of head.

Cattle and calves on feed for slaughter market in the United States for feedlots with capacity of 1,000 or more head represented 83.5 percent of all cattle and calves on feed in the United States on January 1, 2006, up from 82.2 percent on January 1, 2005.

Marketings of fed cattle for feedlots with capacity of 1,000 or more head during 2005 represented 86.0 percent of all cattle marketed from feedlots in the United States, up from 85.3 percent during 2004.

**Cattle on Feed: Number on Feed, Placements, Marketings, and
Other Disappearance, 1,000+ Capacity Feedlots,
United States, February 1, 2004-2006**

Item	Number			2006 as % of	
	2004	2005	2006	2004	2005
	<i>1,000 Head</i>	<i>1,000 Head</i>	<i>1,000 Head</i>	<i>Percent</i>	<i>Percent</i>
On Feed Jan 1 ¹	11,253	11,299	11,804	105	104
Placed on Feed During Jan	1,754	*1,888	2,199	125	116
Fed Cattle Marketed During Jan	1,775	*1,772	1,810	102	102
Other Disappearance During Jan ²	94	*73	83	88	114
On Feed Feb 1 ¹	11,138	*11,342	12,110	109	107

* Revised.

¹ Cattle and calves on feed are animals for slaughter market being fed a ration of grain or other concentrates and are expected to produce a carcass that will grade select or better.

² Includes death loss, movement from feedlots to pasture, and shipments to other feedlots for further feeding.

**Cattle on Feed: Number on Feed, Placements, Marketings, and
Other Disappearance, 1,000+ Capacity Feedlots,
United States, January 1, 2004-2006**

Item	Number			2006 as % of	
	2004	2005	2006	2004	2005
	<i>1,000 Head</i>	<i>1,000 Head</i>	<i>1,000 Head</i>	<i>Percent</i>	<i>Percent</i>
On Feed Dec 1 ^{1 2}	11,335	11,334	11,726	103	103
Placed on Feed During Dec ²	1,748	1,834	1,884	108	103
Fed Cattle Marketed During Dec ²	1,740	1,777	1,715	99	97
Other Disappearance During Dec ^{2 3}	90	92	91	101	99
On Feed Jan 1 ¹	11,253	11,299	11,804	105	104

¹ Cattle and calves on feed are animals for slaughter market being fed a ration of grain or other concentrates and are expected to produce a carcass that will grade select or better.

² December preceding year.

³ Includes death loss, movement from feedlots to pasture, and shipments to other feedlots for further feeding.

**Cattle on Feed: Number on Feed by Class, 1,000+ Capacity Feedlots,
United States, January 1, 2004-2006**

Item	Number			2006 as % of	
	2004	2005	2006	2004	2005
	<i>1,000 Head</i>	<i>1,000 Head</i>	<i>1,000 Head</i>	<i>Percent</i>	<i>Percent</i>
Class on Feed Jan 1					
Steers and Steer Calves	6,845	7,175	7,570	111	106
Heifers and Heifer Calves	4,330	4,046	4,147	96	102
Cows and Bulls	78	78	87	112	112

**Cattle on Feed: Number on Feed, 1,000+ Capacity Feedlots,
by Month, State, and United States 2005-2006 ¹**

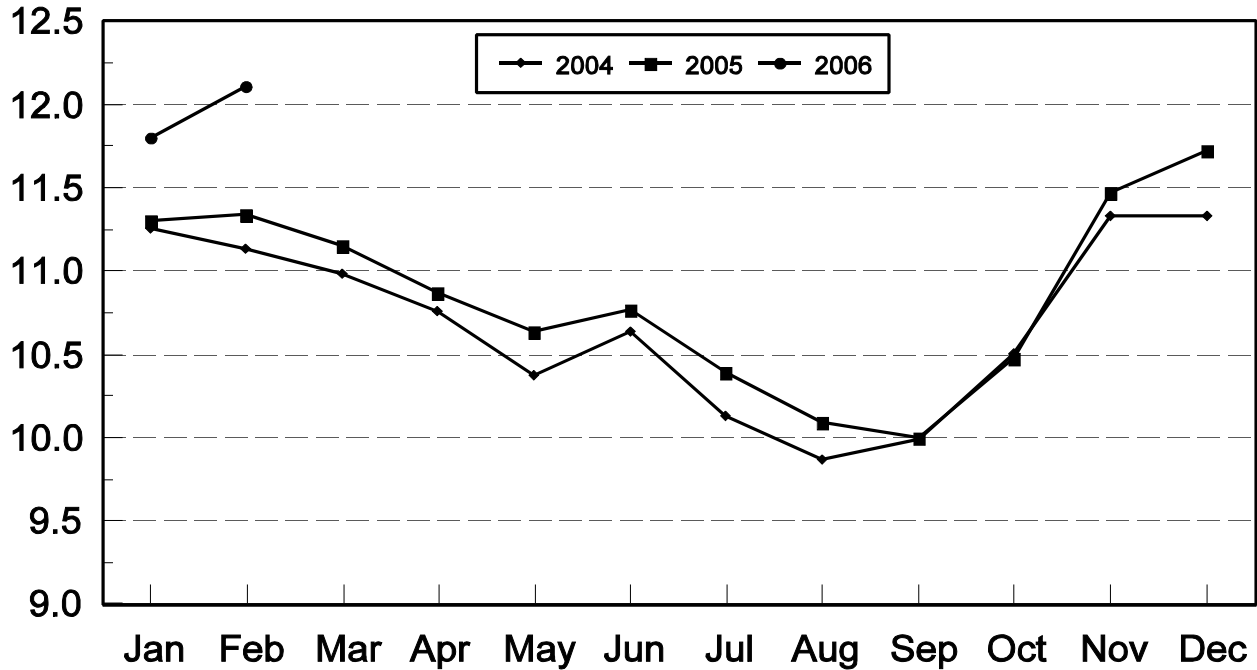
State	Feb 1, 2005	Jan 1, 2006	Feb 1, 2006		
			Number	as % of 2005	as % of Jan
	<i>1,000 Head</i>	<i>1,000 Head</i>	<i>1,000 Head</i>	<i>Percent</i>	<i>Percent</i>
AZ	*328	334	346	105	104
CA	525	550	550	105	100
CO	1,060	1,080	1,110	105	103
ID	270	275	265	98	96
IA	465	510	520	112	102
KS	2,420	2,500	2,580	107	103
NE	2,350	2,430	2,490	106	102
NM	129	143	146	113	102
OK	350	370	375	107	101
SD	205	205	210	102	102
TX	2,720	2,920	3,030	111	104
WA	190	152	153	81	101
Oth Sts	330	335	335	102	100
US	*11,342	11,804	12,110	107	103

* Revised.

¹ Cattle and calves on feed are animals for slaughter market being fed a ration of grain or other concentrates and are expected to produce a carcass that will grade select or better.

United States Cattle on Feed 1,000+ Capacity Feedlots

Million Head



**Cattle on Feed: Number Placed on Feed, 1,000+ Capacity Feedlots,
by Month, State, and United States 2005-2006**

State	During Jan 2005	During Dec 2005	During Jan 2006		
			Number	as % of 2005	as % of Dec
	<i>1,000 Head</i>	<i>1,000 Head</i>	<i>1,000 Head</i>	<i>Percent</i>	<i>Percent</i>
AZ	*30	35	39	130	111
CA	59	69	71	120	103
CO	175	155	225	129	145
ID	37	48	46	124	96
IA	77	65	81	105	125
KS	475	495	570	120	115
NE	425	350	425	100	121
NM	18	20	18	100	90
OK	55	64	65	118	102
SD	41	46	38	93	83
TX	425	465	540	127	116
WA	30	26	33	110	127
Oth Sts	41	46	48	117	104
US	*1,888	1,884	2,199	116	117

* Revised

**Cattle on Feed: Number Placed on Feed by Weight Group, 1,000+ Capacity
Feedlots, by Month, State, and United States, 2004-2006**

State	During January									
	Under 600		600-699		700-799		800 Plus		Total	
	2005	2006	2005	2006	2005	2006	2005	2006	2005	2006
	<i>1,000 Head</i>	<i>1,000 Head</i>	<i>1,000 Head</i>	<i>1,000 Head</i>	<i>1,000 Head</i>	<i>1,000 Head</i>	<i>1,000 Head</i>	<i>1,000 Head</i>	<i>1,000 Head</i>	<i>1,000 Head</i>
CO	25	35	45	45	70	85	35	60	175	225
KS	65	95	135	125	170	220	105	130	475	570
NE	50	50	93	80	153	150	129	145	425	425
TX	120	210	110	115	145	150	50	65	425	540
Oth Sts	120	140	75	82	*93	97	100	120	*388	439
US	380	530	458	447	*631	702	419	520	*1,888	2,199
	During December									
	Under 600		600-699		700-799		800 Plus		Total	
	2004	2005	2004	2005	2004	2005	2004	2005	2004	2005
	<i>1,000 Head</i>	<i>1,000 Head</i>	<i>1,000 Head</i>	<i>1,000 Head</i>	<i>1,000 Head</i>	<i>1,000 Head</i>	<i>1,000 Head</i>	<i>1,000 Head</i>	<i>1,000 Head</i>	<i>1,000 Head</i>
CO	25	35	40	45	45	45	25	30	135	155
KS	100	120	175	150	135	135	80	90	490	495
NE	60	60	117	100	114	100	99	90	390	350
TX	130	200	135	165	110	70	30	30	405	465
Oth Sts	150	160	91	94	85	80	88	85	414	419
US	465	575	558	554	489	430	322	325	1,834	1,884

* Revised

**Cattle on Feed: Number Marketed, 1,000+ Capacity Feedlots,
by Month, State, and United States 2005-2006**

State	During Jan 2005	During Dec 2005	During Jan 2006		
			Number	as % of 2005	as % of Dec
	<i>1,000 Head</i>	<i>1,000 Head</i>	<i>1,000 Head</i>	<i>Percent</i>	<i>Percent</i>
AZ	*31	27	26	84	96
CA	63	60	62	98	103
CO	185	140	185	100	132
ID	61	50	51	84	102
IA	60	53	69	115	130
KS	450	435	465	103	107
NE	360	305	355	99	116
NM	13	13	13	100	100
OK	52	57	57	110	100
SD	26	28	32	123	114
TX	395	470	420	106	89
WA	29	34	31	107	91
Oth Sts	47	43	44	94	102
US	*1,772	1,715	1,810	102	106

* Revised.

**Cattle on Feed: Other Disappearance, 1,000+ Capacity Feedlots,
by Month, State, and United States 2005-2006 ¹**

State	During Jan 2005	During Dec 2005	During Jan 2006		
			Number	as % of 2005	as % of Dec
	<i>1,000 Head</i>	<i>1,000 Head</i>	<i>1,000 Head</i>	<i>Percent</i>	<i>Percent</i>
AZ	*2	2	1	50	50
CA	6	9	9	150	100
CO	10	5	10	100	200
ID	1	3	5	500	167
IA	2	2	2	100	100
KS	15	30	25	167	83
NE	15	15	10	67	67
NM	2	1	2	100	200
OK	3	2	3	100	150
SD	2	3	1	50	33
TX	10	15	10	100	67
WA	1	1	1	100	100
Oth Sts	4	3	4	100	133
US	*73	91	83	114	91

* Revised.

¹ Includes death loss, movement from feedlots to pasture, and shipments to other feedlots for further feeding.

**Cattle on Feed: Number on Feed, 1,000+ Capacity Feedlots,
by Month, State, and United States, 2005 ¹**

State	Jan 1	Feb 1	Mar 1	Apr 1	May 1	Jun 1
	<i>1,000 Head</i>	<i>1,000 Head</i>	<i>1,000 Head</i>	<i>1,000 Head</i>	<i>1,000 Head</i>	<i>1,000 Head</i>
AZ	331	*328	*324	*326	*330	*331
CA	535	525	515	500	500	515
CO	1,080	1,060	1,040	1,020	970	970
ID	295	270	250	240	240	245
IA	450	465	465	455	455	435
KS	2,410	2,420	2,370	2,340	2,260	2,280
NE	2,300	2,350	2,320	2,260	2,190	2,050
NM	126	129	125	113	114	127
OK	350	350	340	325	305	325
SD	192	205	210	205	200	186
TX	2,700	2,720	2,690	2,620	2,630	2,890
WA	190	190	185	159	147	137
Oth Sts	340	330	320	310	300	280
US	11,299	*11,342	*11,154	*10,873	*10,641	*10,771
	Jul 1	Aug 1	Sep 1	Oct 1	Nov 1	Dec 1
	<i>1,000 Head</i>	<i>1,000 Head</i>	<i>1,000 Head</i>	<i>1,000 Head</i>	<i>1,000 Head</i>	<i>1,000 Head</i>
AZ	*324	*314	314	318	323	328
CA	520	530	530	535	545	550
CO	900	820	770	900	1,030	1,070
ID	260	250	250	270	290	280
IA	415	400	395	410	475	500
KS	2,200	2,190	2,210	2,250	2,410	2,470
NE	1,820	1,730	1,770	1,940	2,280	2,400
NM	132	134	135	136	141	137
OK	320	320	320	335	360	365
SD	161	143	132	130	161	190
TX	2,950	2,890	2,800	2,830	2,970	2,940
WA	142	137	139	153	163	161
Oth Sts	250	235	235	275	325	335
US	*10,394	*10,093	10,000	10,482	11,473	11,726

* Revised.

¹ Cattle and calves on feed are animals for slaughter market being fed a ration of grain or other concentrates and are expected to produce a carcass that will grade select or better.

**Cattle on Feed: Number Placed on Feed, 1,000+ Capacity Feedlots,
by Month, State, and United States, 2004-2005**

State	During					
	Dec	Jan	Feb	Mar	Apr	May
	<i>1,000 Head</i>	<i>1,000 Head</i>	<i>1,000 Head</i>	<i>1,000 Head</i>	<i>1,000 Head</i>	<i>1,000 Head</i>
AZ	33	*30	23	27	31	32
CA	72	59	49	65	64	82
CO	135	175	175	165	120	165
ID	55	37	33	44	39	61
IA	71	77	57	55	55	55
KS	490	475	360	445	375	510
NE	390	425	315	300	320	360
NM	14	18	13	13	19	30
OK	53	55	48	61	52	86
SD	42	41	32	31	27	28
TX	405	425	340	480	500	750
WA	39	30	32	22	19	26
Oth Sts	35	41	46	42	39	38
US	1,834	*1,888	1,523	1,750	1,660	2,223
	During					
	Jun	Jul	Aug	Sep	Oct	Nov
	<i>1,000 Head</i>	<i>1,000 Head</i>	<i>1,000 Head</i>	<i>1,000 Head</i>	<i>1,000 Head</i>	<i>1,000 Head</i>
AZ	29	29	35	29	33	35
CA	73	72	62	68	64	66
CO	130	125	155	280	285	165
ID	70	36	51	69	76	49
IA	49	49	69	90	131	108
KS	400	480	520	510	580	465
NE	290	325	415	500	660	440
NM	26	23	28	26	22	18
OK	54	62	70	69	79	68
SD	26	15	24	40	68	63
TX	550	400	480	550	670	495
WA	41	26	30	40	34	27
Oth Sts	31	36	54	84	86	46
US	1,769	1,678	1,993	2,355	2,788	2,045

* Revised.

**Cattle on Feed: Number Placed on Feed by Weight Group, 1,000+ Capacity
Feedlots, by Month, State, and United States, 2004-2005**

State	During December				
	Under 600	600-699	700-799	800 Plus	Total
	<i>1,000 Head</i>	<i>1,000 Head</i>	<i>1,000 Head</i>	<i>1,000 Head</i>	<i>1,000 Head</i>
CO	25	40	45	25	135
KS	100	175	135	80	490
NE	60	117	114	99	390
TX	130	135	110	30	405
Oth Sts	150	91	85	88	414
US	465	558	489	322	1,834
	During January				
	Under 600	600-699	700-799	800 Plus	Total
	<i>1,000 Head</i>	<i>1,000 Head</i>	<i>1,000 Head</i>	<i>1,000 Head</i>	<i>1,000 Head</i>
CO	25	45	70	35	175
KS	65	135	170	105	475
NE	50	93	153	129	425
TX	120	110	145	50	425
Oth Sts	120	75	*93	100	*388
US	380	458	*631	419	*1,888
	During February				
	Under 600	600-699	700-799	800 Plus	Total
	<i>1,000 Head</i>	<i>1,000 Head</i>	<i>1,000 Head</i>	<i>1,000 Head</i>	<i>1,000 Head</i>
CO	15	45	70	45	175
KS	50	75	125	110	360
NE	42	63	111	99	315
TX	70	75	135	60	340
Oth Sts	100	50	85	98	333
US	277	308	526	412	1,523

See footnote(s) at end of table.

--continued

**Cattle on Feed: Number Placed on Feed by Weight Group, 1,000+ Capacity
Feedlots, by Month, State, and United States, 2004-2005 (continued)**

State	During March				
	Under 600	600-699	700-799	800 Plus	Total
	<i>1,000 Head</i>	<i>1,000 Head</i>	<i>1,000 Head</i>	<i>1,000 Head</i>	<i>1,000 Head</i>
CO	15	35	65	50	165
KS	50	85	170	140	445
NE	34	52	92	122	300
TX	85	105	190	100	480
Oth Sts	115	43	92	110	360
US	299	320	609	522	1,750
	During April				
	Under 600	600-699	700-799	800 Plus	Total
	<i>1,000 Head</i>	<i>1,000 Head</i>	<i>1,000 Head</i>	<i>1,000 Head</i>	<i>1,000 Head</i>
CO	20	20	35	45	120
KS	50	50	120	155	375
NE	45	40	105	130	320
TX	105	70	170	155	500
Oth Sts	120	45	70	110	345
US	340	225	500	595	1,660
	During May				
	Under 600	600-699	700-799	800 Plus	Total
	<i>1,000 Head</i>	<i>1,000 Head</i>	<i>1,000 Head</i>	<i>1,000 Head</i>	<i>1,000 Head</i>
CO	20	30	60	55	165
KS	60	95	160	195	510
NE	45	45	110	160	360
TX	165	160	240	185	750
Oth Sts	145	60	93	140	438
US	435	390	663	735	2,223

See footnote(s) at end of table.

--continued

**Cattle on Feed: Number Placed on Feed by Weight Group, 1,000+ Capacity
Feedlots, by Month, State, and United States, 2004-2005 (continued)**

State	During June				
	Under 600	600-699	700-799	800 Plus	Total
	<i>1,000 Head</i>	<i>1,000 Head</i>	<i>1,000 Head</i>	<i>1,000 Head</i>	<i>1,000 Head</i>
CO	25	25	40	40	130
KS	80	85	125	110	400
NE	52	38	75	125	290
TX	130	150	160	110	550
Oth Sts	125	49	80	145	399
US	412	347	480	530	1,769
	During July				
	Under 600	600-699	700-799	800 Plus	Total
	<i>1,000 Head</i>	<i>1,000 Head</i>	<i>1,000 Head</i>	<i>1,000 Head</i>	<i>1,000 Head</i>
CO	20	20	45	40	125
KS	85	100	150	145	480
NE	40	65	90	130	325
TX	130	105	110	55	400
Oth Sts	125	48	70	105	348
US	400	338	465	475	1,678
	During August				
	Under 600	600-699	700-799	800 Plus	Total
	<i>1,000 Head</i>	<i>1,000 Head</i>	<i>1,000 Head</i>	<i>1,000 Head</i>	<i>1,000 Head</i>
CO	20	25	40	70	155
KS	85	105	165	165	520
NE	43	65	112	195	415
TX	140	130	135	75	480
Oth Sts	130	60	88	145	423
US	418	385	540	650	1,993

See footnote(s) at end of table.

--continued

**Cattle on Feed: Number Placed on Feed by Weight Group, 1,000+ Capacity
Feedlots, by Month, State, and United States, 2004-2005 (continued)**

State	During September				
	Under 600	600-699	700-799	800 Plus	Total
	<i>1,000 Head</i>	<i>1,000 Head</i>	<i>1,000 Head</i>	<i>1,000 Head</i>	<i>1,000 Head</i>
CO	30	45	70	135	280
KS	120	120	130	140	510
NE	85	90	120	205	500
TX	175	185	130	60	550
Oth Sts	155	65	100	195	515
US	565	505	550	735	2,355
	During October				
	Under 600	600-699	700-799	800 Plus	Total
	<i>1,000 Head</i>	<i>1,000 Head</i>	<i>1,000 Head</i>	<i>1,000 Head</i>	<i>1,000 Head</i>
CO	75	65	60	85	285
KS	170	175	130	105	580
NE	220	200	120	120	660
TX	185	205	200	80	670
Oth Sts	230	145	83	135	593
US	880	790	593	525	2,788
	During November				
	Under 600	600-699	700-799	800 Plus	Total
	<i>1,000 Head</i>	<i>1,000 Head</i>	<i>1,000 Head</i>	<i>1,000 Head</i>	<i>1,000 Head</i>
CO	45	60	35	25	165
KS	155	145	100	65	465
NE	120	145	85	90	440
TX	160	170	120	45	495
Oth Sts	180	130	80	90	480
US	660	650	420	315	2,045

* Revised.

**Cattle on Feed: Number Marketed, 1,000+ Capacity Feedlots,
by Month, State, and United States, 2004-2005**

State	During					
	Dec	Jan	Feb	Mar	Apr	May
	<i>1,000 Head</i>	<i>1,000 Head</i>	<i>1,000 Head</i>	<i>1,000 Head</i>	<i>1,000 Head</i>	<i>1,000 Head</i>
AZ	30	*31	24	24	24	29
CA	62	63	54	70	59	62
CO	145	185	185	175	150	150
ID	62	61	52	53	37	54
IA	55	60	55	64	53	73
KS	450	450	390	460	425	465
NE	380	360	330	350	380	480
NM	15	13	14	23	16	16
OK	52	52	56	73	70	64
SD	34	26	26	34	31	38
TX	420	395	360	540	480	480
WA	32	29	35	47	30	34
Oth Sts	40	47	53	50	46	52
US	1,777	*1,772	1,634	1,963	1,801	1,997
	During					
	Jun	Jul	Aug	Sep	Oct	Nov
	<i>1,000 Head</i>	<i>1,000 Head</i>	<i>1,000 Head</i>	<i>1,000 Head</i>	<i>1,000 Head</i>	<i>1,000 Head</i>
AZ	35	37	*34	24	27	29
CA	63	59	57	57	50	53
CO	190	200	200	145	150	115
ID	54	45	50	48	55	57
IA	68	63	72	74	65	80
KS	465	470	490	455	400	375
NE	510	405	365	320	310	305
NM	18	18	24	22	16	20
OK	58	61	68	53	53	62
SD	48	30	34	40	35	33
TX	480	450	560	510	520	510
WA	35	30	27	25	23	28
Oth Sts	59	50	52	43	35	34
US	2,083	1,918	*2,033	1,816	1,739	1,701

* Revised.

**Cattle on Feed: Other Disappearance, 1,000+ Capacity Feedlots,
by Month, State, and United States, 2004-2005 ¹**

State	During					
	Dec	Jan	Feb	Mar	Apr	May
	<i>1,000 Head</i>	<i>1,000 Head</i>	<i>1,000 Head</i>	<i>1,000 Head</i>	<i>1,000 Head</i>	<i>1,000 Head</i>
AZ	1	*2	*3	*1	*3	2
CA	5	6	5	10	5	5
CO	10	10	10	10	20	15
ID	3	1	1	1	2	2
IA	1	2	2	2	2	2
KS	20	15	20	15	30	25
NE	10	15	15	10	10	20
NM	2	2	3	2	2	1
OK	6	3	2	3	2	2
SD	2	2	1	2	1	4
TX	25	10	10	10	10	10
WA	2	1	2	1	1	2
Oth Sts	5	4	3	2	3	6
US	92	*73	*77	*68	*91	96
	During					
	Jun	Jul	Aug	Sep	Oct	Nov
	<i>1,000 Head</i>	<i>1,000 Head</i>	<i>1,000 Head</i>	<i>1,000 Head</i>	<i>1,000 Head</i>	<i>1,000 Head</i>
AZ	1	*2	1	1	1	1
CA	5	3	5	6	4	8
CO	10	5	5	5	5	10
ID	1	1	1	1	1	2
IA	1	1	2	1	1	3
KS	15	20	10	15	20	30
NE	10	10	10	10	10	15
NM	3	3	3	3	1	2
OK	1	1	2	1	1	1
SD	3	3	1	2	2	1
TX	10	10	10	10	10	15
WA	1	1	1	1	1	1
Oth Sts	2	1	2	1	1	2
US	63	*61	53	57	58	91

* Revised.

¹ Includes death loss, movement from feedlots to pasture, and shipments to other feedlots for further feeding.

**Cattle on Feed: Number on Feed by Class, 1,000+ Capacity Feedlots,
by Quarter, State, and United States, 2005**

State	Steers & Steer Calves				Heifers & Heifer Calves			
	Jan 1	Apr 1	Jul 1	Oct 1	Jan 1	Apr 1	Jul 1	Oct 1
	<i>1,000 Head</i>	<i>1,000 Head</i>	<i>1,000 Head</i>	<i>1,000 Head</i>	<i>1,000 Head</i>	<i>1,000 Head</i>	<i>1,000 Head</i>	<i>1,000 Head</i>
AZ	323	*320	*319	316	7	6	5	2
CA	495	480	490	505	40	20	30	30
CO	665	620	555	585	410	390	340	310
ID	184	149	169	166	111	91	89	101
IA	305	300	265	280	144	154	149	129
KS	1,310	1,320	1,280	1,330	1,080	995	900	900
NE	1,390	1,410	1,150	1,140	890	835	660	790
NM	80	71	77	76	46	42	55	60
OK	225	215	205	235	125	106	114	100
SD	98	110	75	64	74	83	69	56
TX	1,750	1,680	1,940	1,880	947	936	1,005	947
WA	110	92	87	90	79	63	54	62
Oth Sts	240	225	190	205	93	82	57	66
US	7,175	*6,992	*6,802	6,872	4,046	3,803	3,527	3,553
Cows and Bulls								
	Jan 1	Apr 1	Jul 1	Oct 1				
	<i>1,000 Head</i>	<i>1,000 Head</i>	<i>1,000 Head</i>	<i>1,000 Head</i>				
AZ	1	0	0	0				
CA	0	0	0	0				
CO	5	10	5	5				
ID	0	0	2	3				
IA	1	1	1	1				
KS	20	25	20	20				
NE	20	15	10	10				
NM	0	0	0	0				
OK	0	4	1	0				
SD	20	12	17	10				
TX	3	4	5	3				
WA	1	4	1	1				
Oth Sts	7	3	3	4				
US	78	78	65	57				

* Revised.

**Cattle on Feed: Number of Feedlots, Inventory, and Marketings, by
Size of Feedlot, United States 2004-2005 ¹ (continued)**

Year and State	Feedlot Capacity in Number of Head					
	1,000 - 1,999			2,000 - 3,999		
	Lots	Inventory	Cattle Marketed	Lots	Inventory	Cattle Marketed
	<i>Number</i>	<i>1,000 Head</i>	<i>1,000 Head</i>	<i>Number</i>	<i>1,000 Head</i>	<i>1,000 Head</i>
2004	835	469	823	*548	*733	*1,256
2005	855	506	811	547	777	1,307

* Revised.

¹ Number of feedlots is the number of lots operating at anytime during the year. Inventory is the number on hand January 1 of the following year. The United States totals show the actual number of feedlots, inventory, and number of animals marketed in each size group. The sum of the number shown by State under a specified size group may or may not add to the United States total for that size group since for some states size groups are combined to avoid disclosing individual operations.

**Cattle on Feed: Number of Feedlots, Inventory, and Marketings, by
Size of Feedlot, United States 2004-2005 ¹ (continued)**

Year and State	Feedlot Capacity in Number of Head					
	4,000 - 7,999			8,000 -15,999		
	Lots	Inventory	Cattle Marketed	Lots	Inventory	Cattle Marketed
	<i>Number</i>	<i>1,000 Head</i>	<i>1,000 Head</i>	<i>Number</i>	<i>1,000 Head</i>	<i>1,000 Head</i>
2004	*340	*977	*1,788	*189	*1,314	*2,607
2005	350	1,009	1,780	184	1,363	2,609

* Revised.

¹ Number of feedlots is the number of lots operating at anytime during the year. Inventory is the number on hand January 1 of the following year. The United States totals show the actual number of feedlots, inventory, and number of animals marketed in each size group. The sum of the number shown by State under a specified size group may or may not add to the United States total for that size group since for some states size groups are combined to avoid disclosing individual operations.

**Cattle on Feed: Number of Feedlots, Inventory, and Marketings,
by Size of Feedlot, State, and United States 2004-2005 ¹ (continued)**

Year and State	Feedlot Capacity in Number of Head					
	1,000 - 3,999			4,000 - 15,999		
	Lots	Inventory	Cattle Marketed	Lots	Inventory	Cattle Marketed
	<i>Number</i>	<i>1,000 Head</i>	<i>1,000 Head</i>	<i>Number</i>	<i>1,000 Head</i>	<i>1,000 Head</i>
2004						
AZ						
CA	3	4	5	5	18	22
CO	82	71	110	56	205	365
ID	23	21	32	² 27	² 274	² 608
IA	292	330	510	² 33	² 120	² 208
KS	75	70	115	85	410	810
NE	525	465	880	193	890	1,790
NM				² 4	² 15	² 27
OK	*3	*3	*5	*12	54	*94
SD	130	88	192	² 23	² 104	² 213
TX	11	9	20	39	240	485
WA	² 10	² 26	² 39	² 6	² 75	² 131
Oth Sts	235	140	205	51	145	240
US	*1,383	*1,202	*2,079	*529	2,291	*4,395
2005						
AZ						
CA	4	4	5	4	15	15
CO	76	57	90	52	200	335
ID	19	15	29	² 26	² 260	² 587
IA	310	385	575	² 30	² 125	² 205
KS	69	85	140	87	455	830
NE	530	475	840	198	940	1,770
NM				² 4	² 13	² 23
OK	3	3	7	12	53	95
SD	138	99	190	² 26	² 106	² 213
TX	11	13	20	38	247	475
WA	² 7	² 15	² 26	² 6	² 52	² 140
Oth Sts	240	145	220	56	140	250
US	1,402	1,283	2,118	534	2,372	4,389

See footnote(s) at end of table.

--continued

**Cattle on Feed: Number of Feedlots, Inventory, and Marketings, by
Size of Feedlot, State, and United States 2004-2005 ¹ (continued)**

Year and State	Feedlot Capacity in Number of Head					
	16,000 - 31,999			32,000 and Over		
	Lots	Inventory	Cattle Marketed	Lots	Inventory	Cattle Marketed
	<i>Number</i>	<i>1,000 Head</i>	<i>1,000 Head</i>	<i>Number</i>	<i>1,000 Head</i>	<i>1,000 Head</i>
2004						
AZ	² 3	² 27	² 42	3	304	280
CA	8	166	201	5	347	500
CO	15	250	425	11	554	1,180
ID						
IA						
KS	33	600	1,250	32	1,330	3,160
NE	32	550	1,100	10	395	710
NM	2	37	63	2	74	121
OK	*3	*62	*147	*6	*231	*490
SD						
TX	32	501	1,070	49	1,950	4,110
WA				3	89	253
Oth Sts	² 4	² 55	² 96			
US	*141	*2,403	*4,715	*123	*5,403	*11,115
2005						
AZ	² 3	² 28	² 33	3	306	312
CA	6	114	125	7	417	562
CO	15	270	420	12	553	1,140
ID						
IA						
KS	32	590	1,240	32	1,370	3,070
NE	32	590	1,100	10	425	710
NM	2	34	74	2	96	116
OK	3	68	130	6	246	495
SD						
TX	32	560	1,030	49	2,100	4,230
WA				3	85	211
Oth Sts	² 4	² 50	² 94			
US	137	2,438	4,574	126	5,711	11,091

See footnote(s) at end of table.

--continued

**Cattle on Feed: Number of Feedlots, Inventory, and Marketings, by
Size of Feedlot, State, and United States 2004-2005 ¹ (continued)**

Year and State	Feedlot Capacity in Number of Head		
	Total - 1,000+ Capacity Feedlots		
	Lots	Inventory	Cattle Marketed
	<i>Number</i>	<i>1,000 Head</i>	<i>1,000 Head</i>
2004			
AZ	6	331	322
CA	21	535	728
CO	164	1,080	2,080
ID	50	295	640
IA	325	450	718
KS	225	2,410	5,335
NE	760	2,300	4,480
NM	8	126	211
OK	24	350	736
SD	153	192	405
TX	131	2,700	5,685
WA	19	190	423
Oth Sts	290	340	541
US	2,176	11,299	22,304
2005			
AZ	6	334	345
CA	21	550	707
CO	155	1,080	1,985
ID	45	275	616
IA	340	510	780
KS	220	2,500	5,280
NE	770	2,430	4,420
NM	8	143	213
OK	24	370	727
SD	164	205	403
TX	130	2,920	5,755
WA	16	152	377
Oth Sts	300	335	564
US	2,199	11,804	22,172

* Revised.

¹ Number of feedlots is the number of lots operating at anytime during the year. Inventory is the number on hand January 1 of the following year. The United States totals show the actual number of feedlots, inventory, and number of animals marketed in each size group. The sum of the numbers shown by State under a specified size group may or may not add to the United States total for that size group since for some States size groups are combined to avoid disclosing individual operations.

² Lots, inventory, and marketings from other size groups are included to avoid disclosing individual operations.

**Cattle on Feed: Feedlot Capacity, 1000+ Capacity Feedlots,
United States, January 1, 2004-2006 ¹**

Item	Feedlot Capacity in Number of Head		
	2004	2005	2006
	<i>1,000 Head</i>	<i>1,000 Head</i>	<i>1,000 Head</i>
US	16,600	16,600	16,800

¹ Total capacity of all 1000+ capacity feedlots in the U.S.

**Cattle on Feed: Number of Feedlots, Inventory, and Marketings,
by Size of Feedlot, Region, and United States 2004-2005 ¹**

Year and State	Feedlot Capacity in Number of Head					
	16,000 - 23,999			24,000 - 31,999		
	Lots	Inventory	Cattle Marketed	Lots	Inventory	Cattle Marketed
	<i>Number</i>	<i>1,000 Head</i>	<i>1,000 Head</i>	<i>Number</i>	<i>1,000 Head</i>	<i>1,000 Head</i>
2004						
AZ,CA,TX	22	276	536	20	413	773
CO,KS,NE	55	825	1,575	25	575	1,200
Oth Sts	8	122	239	*11	*192	*392
US	85	1,223	2,350	*56	*1,180	*2,365
2005						
AZ,CA,TX	20	291	510	19	405	671
CO,KS,NE	51	770	1,435	28	680	1,325
Oth Sts	8	130	264	11	162	369
US	79	1,191	2,209	58	1,247	2,365

See footnote(s) at end of table.

--continued

**Cattle on Feed: Number of Feedlots, Inventory, and Marketings, by
Size of Feedlot, Region, and United States 2004-2005 ¹ (continued)**

Year and State	Feedlot Capacity in Number of Head					
	32,000 - 49,999			50,000 and Over		
	Lots	Inventory	Cattle Marketed	Lots	Inventory	Cattle Marketed
	<i>Number</i>	<i>1,000 Head</i>	<i>1,000 Head</i>	<i>Number</i>	<i>1,000 Head</i>	<i>1,000 Head</i>
2004						
AZ,CA,TX	31	964	1,905	26	1,637	2,985
CO,KS,NE	34	1,019	2,190	19	1,260	2,860
Oth Sts	*4	*125	*266	9	*398	*909
US	*69	*2,108	*4,361	54	*3,295	*6,754
2005						
AZ,CA,TX	31	1,062	1,838	28	1,761	3,266
CO,KS,NE	34	1,143	2,355	20	1,205	2,565
Oth Sts	4	121	231	9	419	836
US	69	2,326	4,424	57	3,385	6,667

* Revised.

¹ Number of feedlots is the number of lots operating at anytime during the year. Inventory is the number on hand January 1 of the following year.

**Cattle on Feed: Number of Feedlots, Inventory, and Marketings,
Feedlots With Less Than 1,000 Head Capacity,
by State, and United States 2004-2005 ¹**

Year and State	Lots	Inventory	Cattle Marketed
	<i>Number</i>	<i>1,000 Head</i>	<i>1,000 Head</i>
2004			
IL	5,700	168	230
IN	6,000	116	160
IA	9,500	470	780
MI	3,900	157	230
MN	5,500	194	300
MO	3,100	52	70
NE	3,800	170	310
ND	1,100	34	60
OH	6,500	182	300
PA	4,600	74	120
SD	3,100	208	280
WI	7,700	211	310
Oth Sts	27,500	*409.7	700
US	88,000	*2,445.7	3,850
2005			
IL	5,600	157	230
IN	5,700	106	160
IA	8,600	410	600
MI	3,700	150	230
MN	5,400	184	290
MO	3,200	51	80
NE	3,800	170	290
ND	1,100	34	60
OH	6,100	158	270
PA	4,600	70	110
SD	3,000	195	280
WI	7,900	216	320
Oth Sts	27,300	426.9	700
US	86,000	2,327.9	3,620

* Revised.

¹ Number of feedlots is the number of lots operating at the end of the year. Inventory is the number on hand January 1 of the following year.

**Cattle on Feed: Number of Feedlots, Inventory, and Marketings,
by Size of Feedlot, United States 2004-2005 ¹**

Feedlot Capacity	2004			2005		
	Lots	Inventory	Cattle Marketed	Lots	Inventory	Cattle Marketed
	<i>No.</i>	<i>1,000 Head</i>	<i>1,000 Head</i>	<i>No.</i>	<i>1,000 Head</i>	<i>1,000 Head</i>
Less than 1,000 head	88,000	*2,445.7	3,850	86,000	2,327.9	3,620
1,000 head or more	2,176	11,299	22,304	2,199	11,804	22,172
All Feedlots	90,176	*13,744.7	26,154	88,199	14,131.9	25,792

* Revised.

¹ Number of feedlots with capacity less than 1,000 head is the number of lots operating at the end of the year. Number of feedlots with capacity 1,000 head or more is the number of lots operating at anytime during the year. Inventory is the number on hand January 1 of the following year.

Terms and Definitions of Cattle on Feed Estimates

Cattle on feed are animals being fed a ration of grain, silage, hay and/or protein supplement for slaughter market that are expected to produce a carcass that will grade select or better. It excludes cattle being "backgrounded only" for later sale as feeders or later placement in another feedlot.

Placements are cattle put into a feedlot, fed a ration which will produce a carcass that will grade select or better, and are intended for the slaughter market.

Marketings are cattle shipped out of feedlots to a slaughter market.

Other disappearance includes death loss, movement from feedlots to pasture, and shipments to other feedlots for further feeding.

Reliability of Cattle on Feed Estimates

Survey Procedures: During January and July all known feedlots in the U.S. with capacity of 1,000 or more head are surveyed to provide data for cattle on feed estimates. During the other months, all known feedlots from 17 States are surveyed. The 17 States account for 98 percent of the cattle on feed in feedlots with capacity of 1,000 or more head.

Estimating Procedures: These cattle on feed estimates were prepared by the Agricultural Statistics Board after reviewing recommendations and analysis submitted by each State office. Regional and State survey data were reviewed for reasonableness with each other and with estimates from the previous month when setting the current estimates.

Revision Policy: Revisions to previous estimates are made to improve month to month relationships. Estimates for the previous month are subject to revision in all States each month when current estimates are made. In February, all monthly estimates for the previous year, and the number of feedlots and annual marketings from two years ago are reviewed and subject to revisions. The reviews are primarily based on slaughter data, state check-off or brand data, and any other data that may have been received after the original estimate was made. Estimates will also be reviewed after data from the Census of Agriculture are available. No revisions will be made after that date and estimates become final.

Reliability: Since all 1000+ capacity cattle on feed operators in every State are not included in the monthly survey, survey estimates are subject to sampling variability. Survey results are also subject to non-sampling errors such as omissions, duplications, and mistakes in reporting, recording, and processing the data. The effects of these errors cannot be measured directly. They are minimized through rigid quality controls in the data collection process and through a careful review of all reported data for consistency and reasonableness.

To assist users in evaluating the reliability of estimates in this report, the "**Root Mean Square Error**" is shown for selected items in the following table. The "Root Mean Square Error" is a statistical measure based on past performance and is computed using the differences between first and latest estimates. The "Root Mean Square Error" for cattle on feed inventory estimates over the past 10 years is .1 percent. This means that chances are 2 out of 3 that the final estimate will not be above or below the current estimate of 12.1 million head by more than .1 percent. Chances are 9 out of 10 that the difference will not exceed .2 percent.

The following table also shows a 10 year record of the range of differences between first and latest estimates for selected items. Using estimates of number on feed as an example, changes between the first estimate and the latest estimate during the past 10 years have averaged 10,000 head, ranging from 0 to 30,000 head. During this period the initial estimate has been below the final estimate 7 times, and above the final estimate 1 time. This does not imply that the initial estimate is likely to understate or overstate final inventory.

Reliability of U.S. February 1 Cattle on Feed Estimates ¹

Item	Root Mean Square Error	90% Confidence Level		Difference Between First and Final Estimates ¹			Number of Years	
		Percent	(000) Head	Average	Smallest	Largest	First Above Final	First Below Final
Number on Feed	0.1	0.2	27.8	10	0	30	1	7
Placements	1.4	2.5	56.0	16	0	55	3	6
Marketings	0.9	1.7	31.0	9	0	55	5	1

¹ Based on data for the past 10 years.

ACCESS TO REPORTS!!

For your convenience, there are several ways to obtain NASS reports, data products, and services:

INTERNET ACCESS

All NASS reports are available free of charge on the worldwide Internet. For access, connect to the Internet and go to the NASS Home Page at: www.nass.usda.gov.

E-MAIL SUBSCRIPTION

All NASS reports are available by subscription free of charge direct to your e-mail address. Starting with the NASS Home Page at www.nass.usda.gov, under the right navigation, *Receive reports by Email*, click on **National** or **State**. Follow the instructions on the screen.

PRINTED REPORTS OR DATA PRODUCTS

CALL OUR TOLL-FREE ORDER DESK: 800-999-6779 (U.S. and Canada)
Other areas, please call 703-605-6220 FAX: 703-605-6900
(Visa, MasterCard, check, or money order acceptable for payment.)

ASSISTANCE

For **assistance** with general agricultural statistics or further information about NASS or its products or services, contact the **Agricultural Statistics Hotline** at **800-727-9540**, 7:30 a.m. to 4:00 p.m. ET, or e-mail: nass@nass.usda.gov.

The U.S. Department of Agriculture (USDA) prohibits discrimination in all its programs and activities on the basis of race, color, national origin, age, disability, and where applicable, sex, marital status, familial status, parental status, religion, sexual orientation, genetic information, political beliefs, reprisal, or because all or part of an individual's income is derived from any public assistance program. (Not all prohibited bases apply to all programs.) Persons with disabilities who require alternative means for communication of program information (Braille, large print, audiotape, etc.) should contact USDA's TARGET Center at (202) 720-2600 (voice and TDD).

To file a complaint of discrimination, write to USDA, Director, Office of Civil Rights, 1400 Independence Avenue, S.W., Washington, D.C. 20250-9410, or call (800) 795-3272 (voice) or (202) 720-6382 (TDD). USDA is an equal opportunity provider and employer.