



NASS

FACT FINDERS FOR AGRICULTURE
UNITED STATES DEPARTMENT OF AGRICULTURE

Washington, D.C.

Cattle On Feed

Released March 24, 2006, by the National Agricultural Statistics Service (NASS), Agricultural Statistics Board, U.S. Department of Agriculture. For information on *Cattle on Feed* call Mike Miller at (202) 720-3040, office hours 7:30 a.m. to 4:00 p.m. ET.

U.S. Cattle on Feed Up 8 Percent

Cattle and calves on feed for slaughter market in the United States for feedlots with capacity of 1,000 or more head totaled 12.0 million head on March 1, 2006. The inventory was 8 percent above March 1, 2005 and 9 percent above March 1, 2004. This is the highest March 1 inventory since the series began in 1996.

Placements in feedlots during February totaled 1.60 million, 5 percent above 2005 but 1 percent below 2004. Net placements were 1.53 million. During February, placements of cattle and calves weighing less than 600 pounds were 355,000, 600-699 pounds were 300,000, 700-799 pounds were 510,000, and 800 pounds and greater were 433,000.

Marketings of fed cattle during February totaled 1.61 million, 1 percent below 2005 and 5 percent below 2004. This is the lowest fed cattle marketings for the month of February since the series began in 1996.

Other disappearance totaled 73,000 during February, 5 percent below 2005 but 6 percent above 2004.

**Cattle on Feed: Number on Feed, Placements, Marketings, and
Other Disappearance, 1,000+ Capacity Feedlots,
United States, March 1, 2004-2006**

Item	Number			2006 as % of	
	2004	2005	2006	2004	2005
	<i>1,000 Head</i>	<i>1,000 Head</i>	<i>1,000 Head</i>	<i>Percent</i>	<i>Percent</i>
On Feed Feb 1 ¹	11,138	11,342	12,110	109	107
Placed on Feed During Feb	1,612	1,523	1,598	99	105
Fed Cattle Marketed During Feb	1,694	1,634	1,612	95	99
Other Disappearance During Feb ²	69	77	73	106	95
On Feed Mar 1 ¹	10,987	11,154	12,023	109	108

¹ Cattle and calves on feed are animals for slaughter market being fed a ration of grain or other concentrates and are expected to produce a carcass that will grade select or better.

² Includes death loss, movement from feedlots to pasture, and shipments to other feedlots for further feeding.

**Cattle on Feed: Number on Feed, Placements, Marketings, and
Other Disappearance, 1,000+ Capacity Feedlots,
United States, February 1, 2004-2006**

Item	Number			2006 as % of	
	2004	2005	2006	2004	2005
	<i>1,000 Head</i>	<i>1,000 Head</i>	<i>1,000 Head</i>	<i>Percent</i>	<i>Percent</i>
On Feed Jan 1 ¹	11,253	11,299	11,804	105	104
Placed on Feed During Jan	1,754	1,888	2,199	125	116
Fed Cattle Marketed During Jan	1,775	1,772	1,810	102	102
Other Disappearance During Jan ²	94	73	83	88	114
On Feed Feb 1 ¹	11,138	11,342	12,110	109	107

¹ Cattle and calves on feed are animals for slaughter market being fed a ration of grain or other concentrates and are expected to produce a carcass that will grade select or better.

² Includes death loss, movement from feedlots to pasture, and shipments to other feedlots for further feeding.

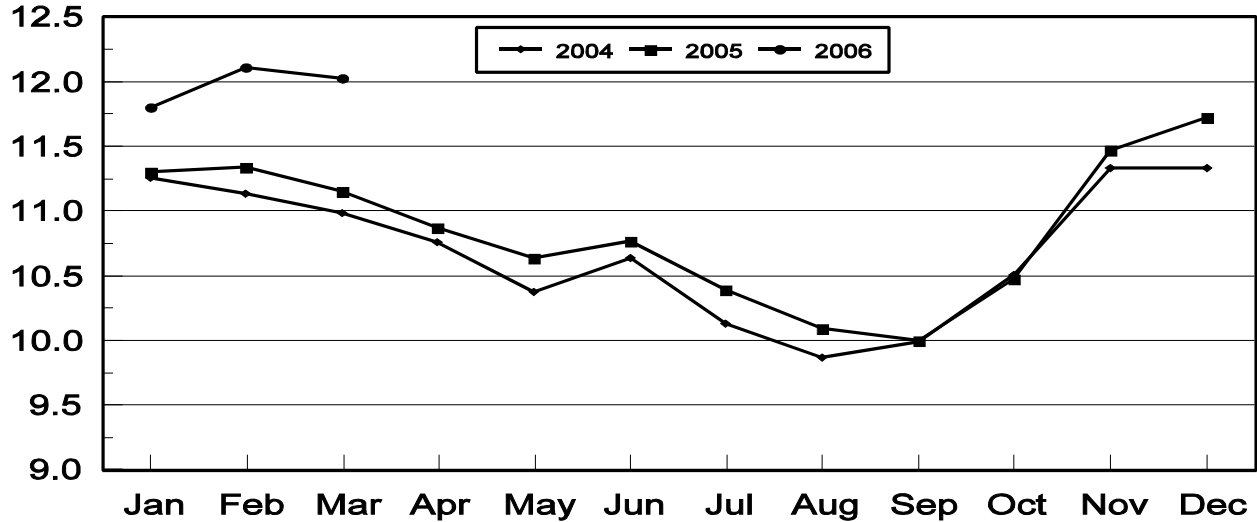
**Cattle on Feed: Number on Feed, 1,000+ Capacity Feedlots,
by Month, State, and United States 2005-2006 ¹**

State	Mar 1, 2005	Feb 1, 2006	Mar 1, 2006		
			Number	as % of 2005	as % of Feb
	<i>1,000 Head</i>	<i>1,000 Head</i>	<i>1,000 Head</i>	<i>Percent</i>	<i>Percent</i>
AZ	324	346	351	108	101
CA	515	550	550	107	100
CO	1,040	1,110	1,090	105	98
ID	250	265	255	102	96
IA	465	520	520	112	100
KS	2,370	2,580	2,610	110	101
NE	2,320	2,490	2,450	106	98
NM	125	146	143	114	98
OK	340	375	365	107	97
SD	210	210	210	100	100
TX	2,690	3,030	3,010	112	99
WA	185	153	154	83	101
Oth Sts	320	335	315	98	94
US	11,154	12,110	12,023	108	99

¹ Cattle and calves on feed are animals for slaughter market being fed a ration of grain or other concentrates and are expected to produce a carcass that will grade select or better.

**United States Cattle on Feed
1,000+ Capacity Feedlots**

Million Head

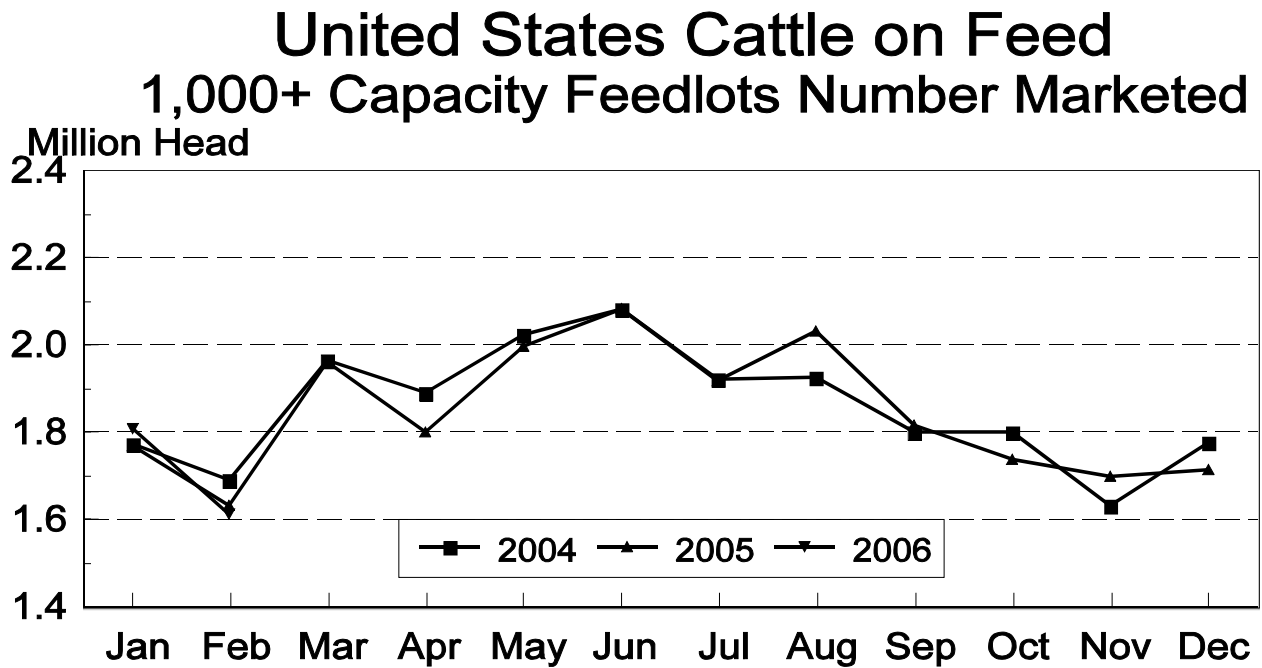
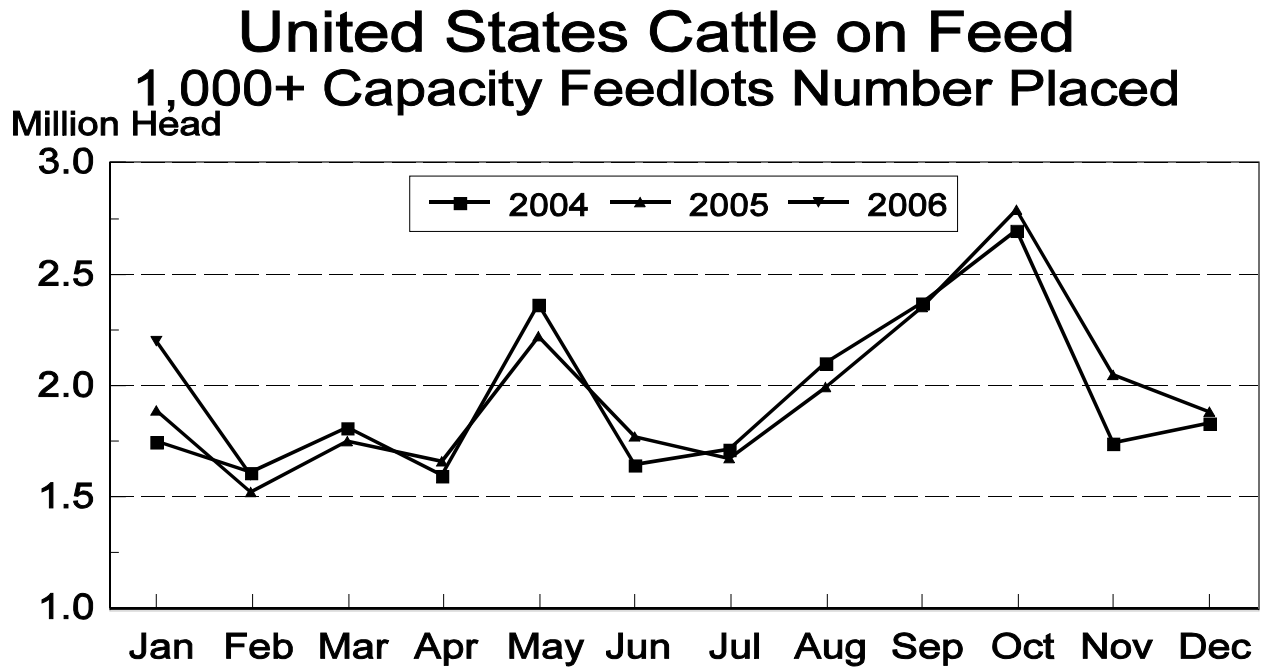


**Cattle on Feed: Number Placed on Feed, 1,000+ Capacity Feedlots,
by Month, State, and United States 2005-2006**

State	During Feb 2005	During Jan 2006	During Feb 2006		
			Number	as % of 2005	as % of Jan
	<i>1,000 Head</i>	<i>1,000 Head</i>	<i>1,000 Head</i>	<i>Percent</i>	<i>Percent</i>
AZ	23	39	31	135	79
CA	49	71	63	129	89
CO	175	225	150	86	67
ID	33	46	32	97	70
IA	57	81	60	105	74
KS	360	570	410	114	72
NE	315	425	330	105	78
NM	13	18	13	100	72
OK	48	65	49	102	75
SD	32	38	33	103	87
TX	340	540	360	106	67
WA	32	33	25	78	76
Oth Sts	46	48	42	91	88
US	1,523	2,199	1,598	105	73

**Cattle on Feed: Number Placed on Feed by Weight Group, 1,000+ Capacity
Feedlots, by Month, State, and United States, 2005-2006**

State	During February									
	Under 600		600-699		700-799		800 Plus		Total	
	2005	2006	2005	2006	2005	2006	2005	2006	2005	2006
	<i>1,000 Head</i>	<i>1,000 Head</i>	<i>1,000 Head</i>	<i>1,000 Head</i>	<i>1,000 Head</i>	<i>1,000 Head</i>	<i>1,000 Head</i>	<i>1,000 Head</i>	<i>1,000 Head</i>	<i>1,000 Head</i>
CO	15	20	45	30	70	55	45	45	175	150
KS	50	60	75	85	125	145	110	120	360	410
NE	42	55	63	60	111	105	99	110	315	330
TX	70	110	75	70	135	120	60	60	340	360
Oth Sts	100	110	50	55	85	85	98	98	333	348
US	277	355	308	300	526	510	412	433	1,523	1,598
State	During January									
	Under 600		600-699		700-799		800 Plus		Total	
	2005	2006	2005	2006	2005	2006	2005	2006	2005	2006
	<i>1,000 Head</i>	<i>1,000 Head</i>	<i>1,000 Head</i>	<i>1,000 Head</i>	<i>1,000 Head</i>	<i>1,000 Head</i>	<i>1,000 Head</i>	<i>1,000 Head</i>	<i>1,000 Head</i>	<i>1,000 Head</i>
CO	25	35	45	45	70	85	35	60	175	225
KS	65	95	135	125	170	220	105	130	475	570
NE	50	50	93	80	153	150	129	145	425	425
TX	120	210	110	115	145	150	50	65	425	540
Oth Sts	120	140	75	82	93	97	100	120	388	439
US	380	530	458	447	631	702	419	520	1,888	2,199



**Cattle on Feed: Number Marketed, 1,000+ Capacity Feedlots,
by Month, State, and United States 2005-2006**

State	During Feb 2005	During Jan 2006	During Feb 2006		
			Number	as % of 2005	as % of Jan
	<i>1,000 Head</i>	<i>1,000 Head</i>	<i>1,000 Head</i>	<i>Percent</i>	<i>Percent</i>
AZ	24	26	24	100	92
CA	54	62	56	104	90
CO	185	185	165	89	89
ID	52	51	38	73	75
IA	55	69	58	105	84
KS	390	465	360	92	77
NE	330	355	360	109	101
NM	14	13	14	100	108
OK	56	57	56	100	98
SD	26	32	29	112	91
TX	360	420	370	103	88
WA	35	31	22	63	71
Oth Sts	53	44	60	113	136
US	1,634	1,810	1,612	99	89

**Cattle on Feed: Other Disappearance, 1,000+ Capacity Feedlots,
by Month, State, and United States 2005-2006 ¹**

State	During Feb 2005	During Jan 2006	During Feb 2006		
			Number	as % of 2005	as % of Jan
	<i>1,000 Head</i>	<i>1,000 Head</i>	<i>1,000 Head</i>	<i>Percent</i>	<i>Percent</i>
AZ	3	1	2	67	200
CA	5	9	7	140	78
CO	10	10	5	50	50
ID	1	5	4	400	80
IA	2	2	2	100	100
KS	20	25	20	100	80
NE	15	10	10	67	100
NM	3	2	2	67	100
OK	2	3	3	150	100
SD	1	1	4	400	400
TX	10	10	10	100	100
WA	2	1	2	100	200
Oth Sts	3	4	2	67	50
US	77	83	73	95	88

¹ Includes death loss, movement from feedlots to pasture, and shipments to other feedlots for further feeding.

Terms and Definitions of Cattle on Feed Estimates

Cattle on feed are animals being fed a ration of grain, silage, hay and/or protein supplement for slaughter market that are expected to produce a carcass that will grade select or better. It excludes cattle being "backgrounded only" for later sale as feeders or later placement in another feedlot.

Placements are cattle put into a feedlot, fed a ration which will produce a carcass that will grade select or better, and are intended for the slaughter market.

Marketings are cattle shipped out of feedlots to a slaughter market.

Other disappearance includes death loss, movement from feedlots to pasture, and shipments to other feedlots for further feeding.

Reliability of Cattle on Feed Estimates

Survey Procedures: During January and July all known feedlots in the U.S. with capacity of 1,000 or more head are surveyed to provide data for cattle on feed estimates. During the other months, all known feedlots from 17 States are surveyed. The 17 States account for 98 percent of the cattle on feed in feedlots with capacity of 1,000 or more head.

Estimating Procedures: These cattle on feed estimates were prepared by the Agricultural Statistics Board after reviewing recommendations and analysis submitted by each State office. Regional and State survey data were reviewed for reasonableness with each other and with estimates from the previous month when setting the current estimates.

Revision Policy: Revisions to previous estimates are made to improve month to month relationships. Estimates for the previous month are subject to revision in all States each month when current estimates are made. In February, all monthly estimates for the previous year, and the number of feedlots and annual marketings from two years ago are reviewed and subject to revisions. The reviews are primarily based on slaughter data, state check-off or brand data, and any other data that may have been received after the original estimate was made. Estimates will also be reviewed after data from the Census of Agriculture are available. No revisions will be made after that date and estimates become final.

Reliability: Since all 1000+ capacity cattle on feed operators in every State are not included in the monthly survey, survey estimates are subject to sampling variability. Survey results are also subject to non-sampling errors such as omissions, duplications, and mistakes in reporting, recording, and processing the data. The effects of these errors cannot be measured directly. They are minimized through rigid quality controls in the data collection process and through a careful review of all reported data for consistency and reasonableness.

To assist users in evaluating the reliability of estimates in this report, the "**Root Mean Square Error**" is shown for selected items in the following table. The "Root Mean Square Error" is a statistical measure based on past performance and is computed using the differences between first and latest estimates. The "Root Mean Square Error" for cattle on feed inventory estimates over the

past 10 years is .1 percent. This means that chances are 2 out of 3 that the final estimate will not be above or below the current estimate of 12.0 million head by more than .1 percent. Chances are 9 out of 10 that the difference will not exceed .2 percent.

The following table also shows a 10 year record of the range of differences between first and latest estimates for selected items. Using estimates of number on feed as an example, changes between the first estimate and the latest estimate during the past 10 years have averaged 7,000 head, ranging from 0 to 25,000 head. During this period the initial estimate has been below the final estimate 5 times, and above the final estimate 0 times. This does not imply that the initial estimate is likely to understate or overstate final inventory.

Reliability of U.S. March 1 Cattle on Feed Estimates ¹

Item	Root Mean Square Error	90% Confidence Level		Difference Between First and Final Estimates ¹			Number of Years	
		Percent	(000) Head	Average	Smallest	Largest	First Above Final	First Below Final
	<i>Percent</i>	<i>Percent</i>	<i>1,000 Head</i>	<i>1,000 Head</i>	<i>1,000 Head</i>	<i>1,000 Head</i>	<i>Number</i>	<i>Number</i>
Number on Feed	0.1	0.2	23.4	7	0	25	0	5
Placements	1.1	2.0	32.0	11	0	42	1	5
Marketings	0.9	1.6	25.1	9	0	40	0	6

¹ Based on data for the past 10 years.

ACCESS TO REPORTS!!

For your convenience, there are several ways to obtain NASS reports, data products, and services:

INTERNET ACCESS

All NASS reports are available free of charge on the worldwide Internet. For access, connect to the Internet and go to the NASS Home Page at: **www.nass.usda.gov**.

E-MAIL SUBSCRIPTION

All NASS reports are available by subscription free of charge direct to your e-mail address. Starting with the NASS Home Page at **www.nass.usda.gov**, under the right navigation, *Receive reports by Email*, click on **National** or **State**. Follow the instructions on the screen.

PRINTED REPORTS OR DATA PRODUCTS

CALL OUR TOLL-FREE ORDER DESK: 800-999-6779 (U.S. and Canada)
Other areas, please call 703-605-6220 FAX: 703-605-6900
(Visa, MasterCard, check, or money order acceptable for payment.)

ASSISTANCE

For **assistance** with general agricultural statistics or further information about NASS or its products or services, contact the **Agricultural Statistics Hotline** at **800-727-9540**, 7:30 a.m. to 4:00 p.m. ET, or e-mail: **nass@nass.usda.gov**.

The U.S. Department of Agriculture (USDA) prohibits discrimination in all its programs and activities on the basis of race, color, national origin, age, disability, and where applicable, sex, marital status, familial status, parental status, religion, sexual orientation, genetic information, political beliefs, reprisal, or because all or part of an individual's income is derived from any public assistance program. (Not all prohibited bases apply to all programs.) Persons with disabilities who require alternative means for communication of program information (Braille, large print, audiotape, etc.) should contact USDA's TARGET Center at (202) 720-2600 (voice and TDD).

To file a complaint of discrimination, write to USDA, Director, Office of Civil Rights, 1400 Independence Avenue, S.W., Washington, D.C. 20250-9410, or call (800) 795-3272 (voice) or (202) 720-6382 (TDD). USDA is an equal opportunity provider and employer.