



Cattle On Feed

Released April 21, 2006, by the National Agricultural Statistics Service (NASS), Agricultural Statistics Board, U.S. Department of Agriculture. For information on *Cattle on Feed* call Mike Miller at (202) 720-3040, office hours 7:30 a.m. to 4:00 p.m. ET.

U.S. Cattle on Feed Up 9 Percent

Cattle and calves on feed for slaughter market in the United States for feedlots with capacity of 1,000 or more head totaled 11.8 million head on April 1, 2006. The inventory was 9 percent above April 1, 2005 and 10 percent above April 1, 2004. This is the highest April 1 inventory since the series began in 1996. The inventory included 7.74 million steers and steer calves, up 11 percent from the previous year. This group accounted for 66 percent of the total inventory. Heifers and heifer calves accounted for 4.0 million head, up 5 percent from 2005.

Placements in feedlots during March totaled 1.84 million, 5 percent above 2005 and 1 percent above 2004. Net placements were 1.75 million. During March, placements of cattle and calves weighing less than 600 pounds were 380,000, 600-699 pounds were 342,000, 700-799 pounds were 565,000, and 800 pounds and greater were 550,000.

Marketings of fed cattle during March totaled 1.96 million, down slightly from 2005 and slightly below 2004.

Other disappearance totaled 90,000 during March, 32 percent above 2005 and 34 percent above 2004.

**Cattle on Feed: Number on Feed, Placements, Marketings, and
Other Disappearance, 1,000+ Capacity Feedlots,
United States, April 1, 2004-2006**

Item	Number			2006 as % of	
	2004	2005	2006	2004	2005
	<i>1,000 Head</i>	<i>1,000 Head</i>	<i>1,000 Head</i>	<i>Percent</i>	<i>Percent</i>
On Feed Mar 1 ¹	10,987	11,154	12,023	109	108
Placed on Feed During Mar	1,810	1,750	1,837	101	105
Fed Cattle Marketed During Mar	1,967	1,963	1,958	100	100
Other Disappearance During Mar ²	67	68	90	134	132
On Feed Apr 1 ¹	10,763	10,873	11,812	110	109

¹ Cattle and calves on feed are animals for slaughter market being fed a ration of grain or other concentrates and are expected to produce a carcass that will grade select or better.

² Includes death loss, movement from feedlots to pasture, and shipments to other feedlots for further feeding.

**Cattle on Feed: Number on Feed, Placements, Marketings, and
Other Disappearance, 1,000+ Capacity Feedlots,
United States, March 1, 2004-2006**

Item	Number			2006 as % of	
	2004	2005	2006	2004	2005
	<i>1,000 Head</i>	<i>1,000 Head</i>	<i>1,000 Head</i>	<i>Percent</i>	<i>Percent</i>
On Feed Feb 1 ¹	11,138	11,342	12,110	109	107
Placed on Feed During Feb	1,612	1,523	1,598	99	105
Fed Cattle Marketed During Feb	1,694	1,634	1,612	95	99
Other Disappearance During Feb ²	69	77	73	106	95
On Feed Mar 1 ¹	10,987	11,154	12,023	109	108

¹ Cattle and calves on feed are animals for slaughter market being fed a ration of grain or other concentrates and are expected to produce a carcass that will grade select or better.

² Includes death loss, movement from feedlots to pasture, and shipments to other feedlots for further feeding.

**Cattle on Feed: Number on Feed by Class, 1,000+ Capacity Feedlots,
United States, April 1, 2004-2006**

Item	Number			2006 as % of	
	2004	2005	2006	2004	2005
	<i>1,000 Head</i>	<i>1,000 Head</i>	<i>1,000 Head</i>	<i>Percent</i>	<i>Percent</i>
Class on Feed Apr 1					
Steers and Steer Calves	6,630	6,992	7,740	117	111
Heifers and Heifer Calves	4,066	3,803	3,997	98	105
Cows and Bulls	67	78	75	112	96

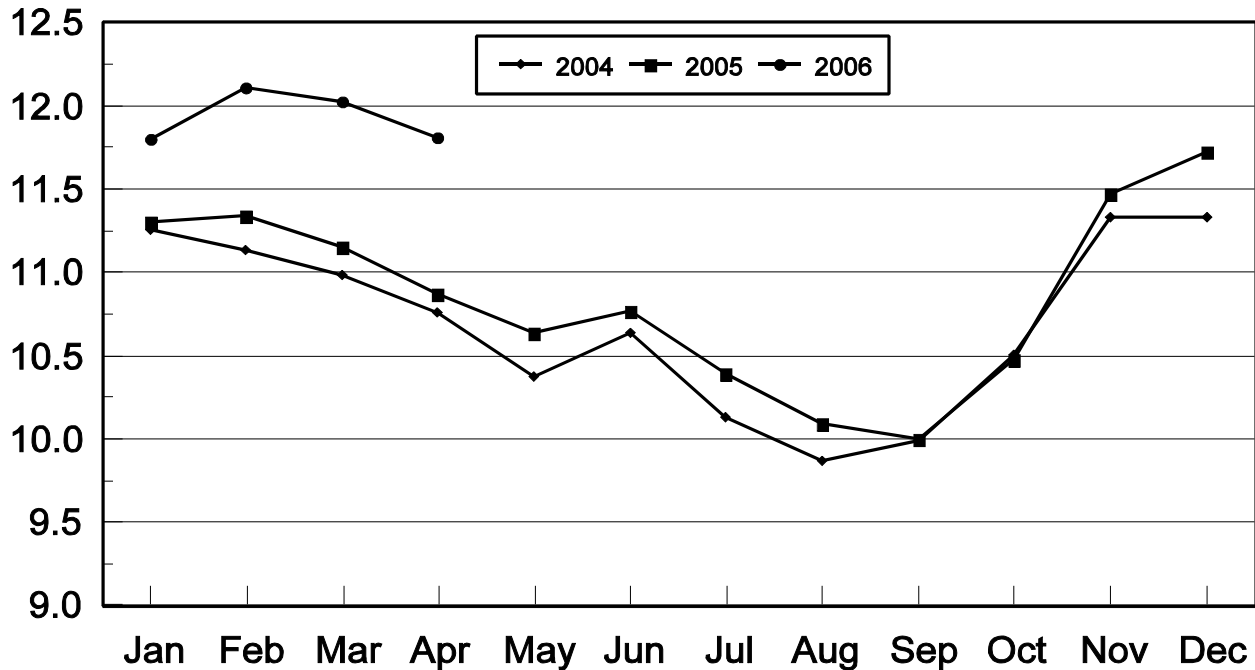
**Cattle on Feed: Number on Feed, 1,000+ Capacity Feedlots,
by Month, State, and United States 2005-2006 ¹**

State	Apr 1, 2005	Mar 1, 2006	Apr 1, 2006		
			Number	as % of 2005	as % of Mar
	<i>1,000 Head</i>	<i>1,000 Head</i>	<i>1,000 Head</i>	<i>Percent</i>	<i>Percent</i>
AZ	326	351	351	108	100
CA	500	550	535	107	97
CO	1,020	1,090	1,070	105	98
ID	240	255	250	104	98
IA	455	520	500	110	96
KS	2,340	2,610	2,590	111	99
NE	2,260	2,450	2,400	106	98
NM	113	143	139	123	97
OK	325	365	360	111	99
SD	205	210	210	102	100
TX	2,620	3,010	2,940	112	98
WA	159	154	152	96	99
Oth Sts	310	315	315	102	100
US	10,873	12,023	11,812	109	98

¹ Cattle and calves on feed are animals for slaughter market being fed a ration of grain or other concentrates and are expected to produce a carcass that will grade select or better.

United States Cattle on Feed 1,000+ Capacity Feedlots

Million Head

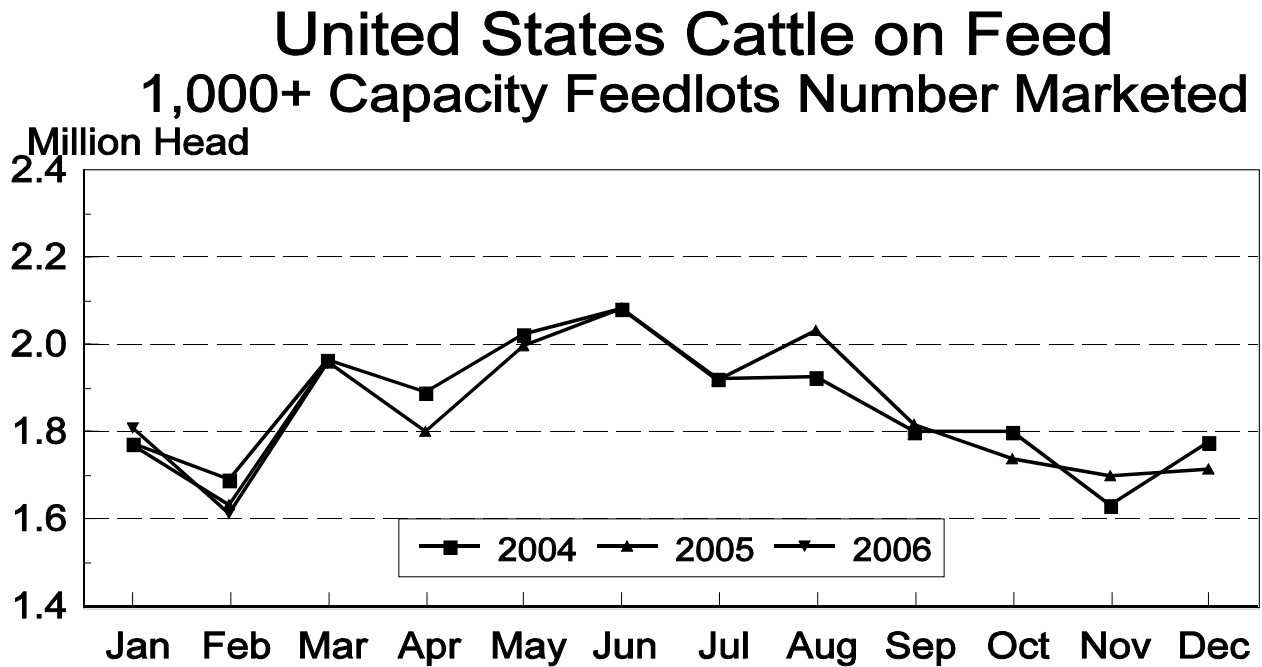
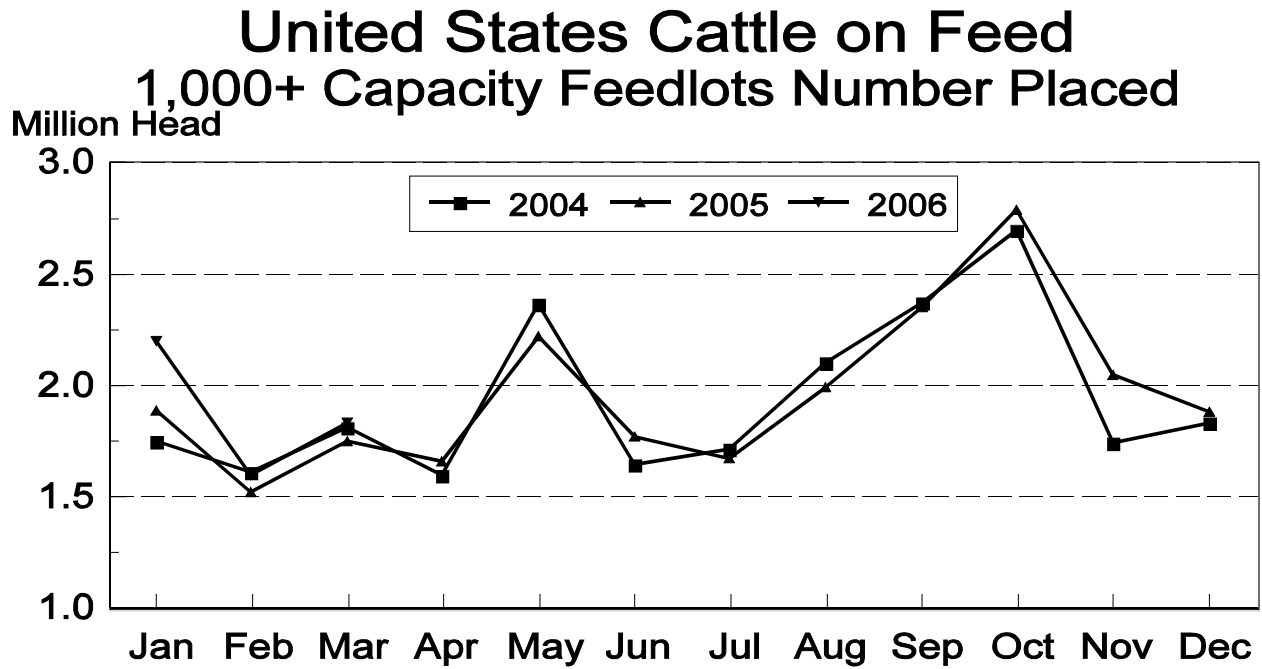


**Cattle on Feed: Number Placed on Feed, 1,000+ Capacity Feedlots,
by Month, State, and United States 2005-2006**

State	During Mar 2005	During Feb 2006	During Mar 2006		
			Number	as % of 2005	as % of Feb
	<i>1,000 Head</i>	<i>1,000 Head</i>	<i>1,000 Head</i>	<i>Percent</i>	<i>Percent</i>
AZ	27	31	30	111	97
CA	65	63	59	91	94
CO	165	150	155	94	103
ID	44	32	42	95	131
IA	55	60	55	100	92
KS	445	410	480	108	117
NE	300	330	335	112	102
NM	13	13	21	162	162
OK	61	49	68	111	139
SD	31	33	36	116	109
TX	480	360	485	101	135
WA	22	25	26	118	104
Oth Sts	42	42	45	107	107
US	1,750	1,598	1,837	105	115

**Cattle on Feed: Number Placed on Feed by Weight Group, 1,000+ Capacity
Feedlots, by Month, State, and United States, 2005-2006**

State	During March									
	Under 600		600-699		700-799		800 Plus		Total	
	2005	2006	2005	2006	2005	2006	2005	2006	2005	2006
	<i>1,000 Head</i>	<i>1,000 Head</i>	<i>1,000 Head</i>	<i>1,000 Head</i>	<i>1,000 Head</i>	<i>1,000 Head</i>	<i>1,000 Head</i>	<i>1,000 Head</i>	<i>1,000 Head</i>	<i>1,000 Head</i>
CO	15	25	35	30	65	60	50	40	165	155
KS	50	70	85	80	170	165	140	165	445	480
NE	34	50	52	50	92	90	122	145	300	335
TX	85	120	105	120	190	165	100	80	480	485
Oth Sts	115	115	43	62	92	85	110	120	360	382
US	299	380	320	342	609	565	522	550	1,750	1,837
State	During February									
	Under 600		600-699		700-799		800 Plus		Total	
	2005	2006	2005	2006	2005	2006	2005	2006	2005	2006
	<i>1,000 Head</i>	<i>1,000 Head</i>	<i>1,000 Head</i>	<i>1,000 Head</i>	<i>1,000 Head</i>	<i>1,000 Head</i>	<i>1,000 Head</i>	<i>1,000 Head</i>	<i>1,000 Head</i>	<i>1,000 Head</i>
CO	15	20	45	30	70	55	45	45	175	150
KS	50	60	75	85	125	145	110	120	360	410
NE	42	55	63	60	111	105	99	110	315	330
TX	70	110	75	70	135	120	60	60	340	360
Oth Sts	100	110	50	55	85	85	98	98	333	348
US	277	355	308	300	526	510	412	433	1,523	1,598



**Cattle on Feed: Number Marketed, 1,000+ Capacity Feedlots,
by Month, State, and United States 2005-2006**

State	During Mar 2005	During Feb 2006	During Mar 2006		
			Number	as % of 2005	as % of Feb
	<i>1,000 Head</i>	<i>1,000 Head</i>	<i>1,000 Head</i>	<i>Percent</i>	<i>Percent</i>
AZ	24	24	28	117	117
CA	70	56	68	97	121
CO	175	165	165	94	100
ID	53	38	45	85	118
IA	64	58	73	114	126
KS	460	360	470	102	131
NE	350	360	370	106	103
NM	23	14	23	100	164
OK	73	56	72	99	129
SD	34	29	35	103	121
TX	540	370	540	100	146
WA	47	22	27	57	123
Oth Sts	50	60	42	84	70
US	1,963	1,612	1,958	100	121

**Cattle on Feed: Other Disappearance, 1,000+ Capacity Feedlots,
by Month, State, and United States 2005-2006 ¹**

State	During Mar 2005	During Feb 2006	During Mar 2006		
			Number	as % of 2005	as % of Feb
	<i>1,000 Head</i>	<i>1,000 Head</i>	<i>1,000 Head</i>	<i>Percent</i>	<i>Percent</i>
AZ	1	2	2	200	100
CA	10	7	6	60	86
CO	10	5	10	100	200
ID	1	4	2	200	50
IA	1	2	2	200	100
KS	15	20	30	200	150
NE	10	10	15	150	150
NM	2	2	2	100	100
OK	3	3	1	33	33
SD	2	4	1	50	25
TX	10	10	15	150	150
WA	1	2	1	100	50
Oth Sts	2	2	3	150	150
US	68	73	90	132	123

¹ Includes death loss, movement from feedlots to pasture, and shipments to other feedlots for further feeding.

**Cattle on Feed: Number on Feed by Class, 1,000+ Capacity Feedlots,
by Quarter, State, and United States, 2005-2006**

State	Steers & Steer Calves			Heifers & Heifer Calves			Cows and Bulls		
	Apr 1, 2005	Jan 1, 2006	Apr 1, 2006	Apr 1, 2005	Jan 1, 2006	Apr 1, 2006	Apr 1, 2005	Jan 1, 2006	Apr 1, 2006
	<i>1,000 Head</i>	<i>1,000 Head</i>	<i>1,000 Head</i>	<i>1,000 Head</i>	<i>1,000 Head</i>	<i>1,000 Head</i>	<i>1,000 Head</i>	<i>1,000 Head</i>	<i>1,000 Head</i>
AZ	320	332	342	6	2	9	0	0	0
CA	480	506	500	20	44	35	0	0	0
CO	620	690	740	390	380	320	10	10	10
ID	149	167	158	91	106	90	0	2	2
IA	300	340	355	154	169	144	1	1	1
KS	1,320	1,390	1,460	995	1,090	1,110	25	20	20
NE	1,410	1,460	1,480	835	950	900	15	20	20
NM	71	78	77	42	65	62	0	0	0
OK	215	265	245	106	105	115	4	0	0
SD	110	105	115	83	73	79	12	27	16
TX	1,680	1,900	1,940	936	1,017	999	4	3	1
WA	92	92	88	63	59	62	4	1	2
Oth Sts	225	245	240	82	87	72	3	3	3
US	6,992	7,570	7,740	3,803	4,147	3,997	78	87	75

Terms and Definitions of Cattle on Feed Estimates

Cattle on feed are animals being fed a ration of grain, silage, hay and/or protein supplement for slaughter market that are expected to produce a carcass that will grade select or better. It excludes cattle being "backgrounded only" for later sale as feeders or later placement in another feedlot.

Placements are cattle put into a feedlot, fed a ration which will produce a carcass that will grade select or better, and are intended for the slaughter market.

Marketings are cattle shipped out of feedlots to a slaughter market.

Other disappearance includes death loss, movement from feedlots to pasture, and shipments to other feedlots for further feeding.

Reliability of Cattle on Feed Estimates

Survey Procedures: During January and July all known feedlots in the U.S. with capacity of 1,000 or more head are surveyed to provide data for cattle on feed estimates. During the other months, all known feedlots from 17 States are surveyed. The 17 States account for 98 percent of the cattle on feed in feedlots with capacity of 1,000 or more head.

Estimating Procedures: These cattle on feed estimates were prepared by the Agricultural Statistics Board after reviewing recommendations and analysis submitted by each State office. Regional and State survey data were reviewed for reasonableness with each other and with estimates from the previous month when setting the current estimates.

Revision Policy: Revisions to previous estimates are made to improve month to month relationships. Estimates for the previous month are subject to revision in all States each month when current estimates are made. In February, all monthly estimates for the previous year, and the number of feedlots and annual marketings from two years ago are reviewed and subject to revisions. The reviews are primarily based on slaughter data, state check-off or brand data, and any other data that may have been received after the original estimate was made. Estimates will also be reviewed after data from the Census of Agriculture are available. No revisions will be made after that date and estimates become final.

Reliability: Since all 1000+ capacity cattle on feed operators in every State are not included in the monthly survey, survey estimates are subject to sampling variability. Survey results are also subject to non-sampling errors such as omissions, duplications, and mistakes in reporting, recording, and processing the data. The effects of these errors cannot be measured directly. They are minimized through rigid quality controls in the data collection process and through a careful review of all reported data for consistency and reasonableness.

To assist users in evaluating the reliability of estimates in this report, the "**Root Mean Square Error**" is shown for selected items in the following table. The "Root Mean Square Error" is a statistical measure based on past performance and is computed using the differences between first and latest estimates. The "Root Mean Square Error" for cattle on feed inventory estimates over the

past 10 years is .1 percent. This means that chances are 2 out of 3 that the final estimate will not be above or below the current estimate of 11.8 million head by more than .1 percent. Chances are 9 out of 10 that the difference will not exceed .1 percent.

The following table also shows a 10 year record of the range of differences between first and latest estimates for selected items. Using estimates of number on feed as an example, changes between the first estimate and the latest estimate during the past 10 years have averaged 7,000 head, ranging from 0 to 15,000 head. During this period the initial estimate has been below the final estimate 7 times, and above the final estimate 0 times. This does not imply that the initial estimate is likely to understate or overstate final inventory.

Reliability of U.S. April 1 Cattle on Feed Estimates ¹

Item	Root Mean Square Error	90% Confidence Level		Difference Between First and Final Estimates ¹			Number of Years	
		Percent	(000) Head	Average	Smallest	Largest	First Above Final	First Below Final
	<i>Percent</i>	<i>Percent</i>	<i>1,000 Head</i>	<i>1,000 Head</i>	<i>1,000 Head</i>	<i>1,000 Head</i>	<i>Number</i>	<i>Number</i>
Number on Feed	0.1	0.1	17.5	7	0	15	0	7
Placements	0.4	0.8	15.1	7	0	15	3	5
Marketings	0.3	0.5	10.2	4	0	10	2	4

¹ Based on data for the past 10 years.

ACCESS TO REPORTS!!

For your convenience, there are several ways to obtain NASS reports, data products, and services:

INTERNET ACCESS

All NASS reports are available free of charge on the worldwide Internet. For access, connect to the Internet and go to the NASS Home Page at: **www.nass.usda.gov**.

E-MAIL SUBSCRIPTION

All NASS reports are available by subscription free of charge direct to your e-mail address. Starting with the NASS Home Page at **www.nass.usda.gov**, under the right navigation, *Receive reports by Email*, click on **National** or **State**. Follow the instructions on the screen.

PRINTED REPORTS OR DATA PRODUCTS

CALL OUR TOLL-FREE ORDER DESK: 800-999-6779 (U.S. and Canada)
Other areas, please call 703-605-6220 FAX: 703-605-6900
(Visa, MasterCard, check, or money order acceptable for payment.)

ASSISTANCE

For **assistance** with general agricultural statistics or further information about NASS or its products or services, contact the **Agricultural Statistics Hotline** at **800-727-9540**, 7:30 a.m. to 4:00 p.m. ET, or e-mail: **nass@nass.usda.gov**.

The U.S. Department of Agriculture (USDA) prohibits discrimination in all its programs and activities on the basis of race, color, national origin, age, disability, and where applicable, sex, marital status, familial status, parental status, religion, sexual orientation, genetic information, political beliefs, reprisal, or because all or part of an individual's income is derived from any public assistance program. (Not all prohibited bases apply to all programs.) Persons with disabilities who require alternative means for communication of program information (Braille, large print, audiotape, etc.) should contact USDA's TARGET Center at (202) 720-2600 (voice and TDD).

To file a complaint of discrimination, write to USDA, Director, Office of Civil Rights, 1400 Independence Avenue, S.W., Washington, D.C. 20250-9410, or call (800) 795-3272 (voice) or (202) 720-6382 (TDD). USDA is an equal opportunity provider and employer.