



NASS

FACT FINDERS FOR AGRICULTURE
UNITED STATES DEPARTMENT OF AGRICULTURE

Washington, D.C.

Cattle On Feed

Released May 19, 2006, by the National Agricultural Statistics Service (NASS), Agricultural Statistics Board, U.S. Department of Agriculture. For information on *Cattle on Feed* call Mike Miller at (202) 720-3040, office hours 7:30 a.m. to 4:00 p.m. ET.

U.S. Cattle on Feed Up 9 Percent

Cattle and calves on feed for slaughter market in the United States for feedlots with capacity of 1,000 or more head totaled 11.6 million head on May 1, 2006. The inventory was 9 percent above May 1, 2005 and 11 percent above May 1, 2004. This is the highest May 1 inventory since the series began in 1996.

Placements in feedlots during April totaled 1.63 million, 2 percent below 2005 but 2 percent above 2004. Net placements were 1.54 million. During April, placements of cattle and calves weighing less than 600 pounds were 385,000, 600-699 pounds were 270,000, 700-799 pounds were 444,000, and 800 pounds and greater were 530,000.

Marketings of fed cattle during April totaled 1.79 million, down slightly from 2005 and 5 percent below 2004. This is the lowest fed cattle marketings for the month of April since the series began in 1996.

Other disappearance totaled 87,000 during April, 4 percent below 2005 and 10 percent below 2004.

**Cattle on Feed: Number on Feed, Placements, Marketings, and
Other Disappearance, 1,000+ Capacity Feedlots,
United States, May 1, 2004-2006**

Item	Number			2006 as % of	
	2004	2005	2006	2004	2005
	<i>1,000 Head</i>	<i>1,000 Head</i>	<i>1,000 Head</i>	<i>Percent</i>	<i>Percent</i>
On Feed Apr 1 ¹	10,763	10,873	11,812	110	109
Placed on Feed During Apr	1,600	1,660	1,629	102	98
Fed Cattle Marketed During Apr	1,891	1,801	1,794	95	100
Other Disappearance During Apr ²	97	91	87	90	96
On Feed May 1 ¹	10,375	10,641	11,560	111	109

¹ Cattle and calves on feed are animals for slaughter market being fed a ration of grain or other concentrates and are expected to produce a carcass that will grade select or better.

² Includes death loss, movement from feedlots to pasture, and shipments to other feedlots for further feeding.

**Cattle on Feed: Number on Feed, Placements, Marketings, and
Other Disappearance, 1,000+ Capacity Feedlots,
United States, April 1, 2004-2006**

Item	Number			2006 as % of	
	2004	2005	2006	2004	2005
	<i>1,000 Head</i>	<i>1,000 Head</i>	<i>1,000 Head</i>	<i>Percent</i>	<i>Percent</i>
On Feed Mar 1 ¹	10,987	11,154	12,023	109	108
Placed on Feed During Mar	1,810	1,750	1,837	101	105
Fed Cattle Marketed During Mar	1,967	1,963	1,958	100	100
Other Disappearance During Mar ²	67	68	90	134	132
On Feed Apr 1 ¹	10,763	10,873	11,812	110	109

¹ Cattle and calves on feed are animals for slaughter market being fed a ration of grain or other concentrates and are expected to produce a carcass that will grade select or better.

² Includes death loss, movement from feedlots to pasture, and shipments to other feedlots for further feeding.

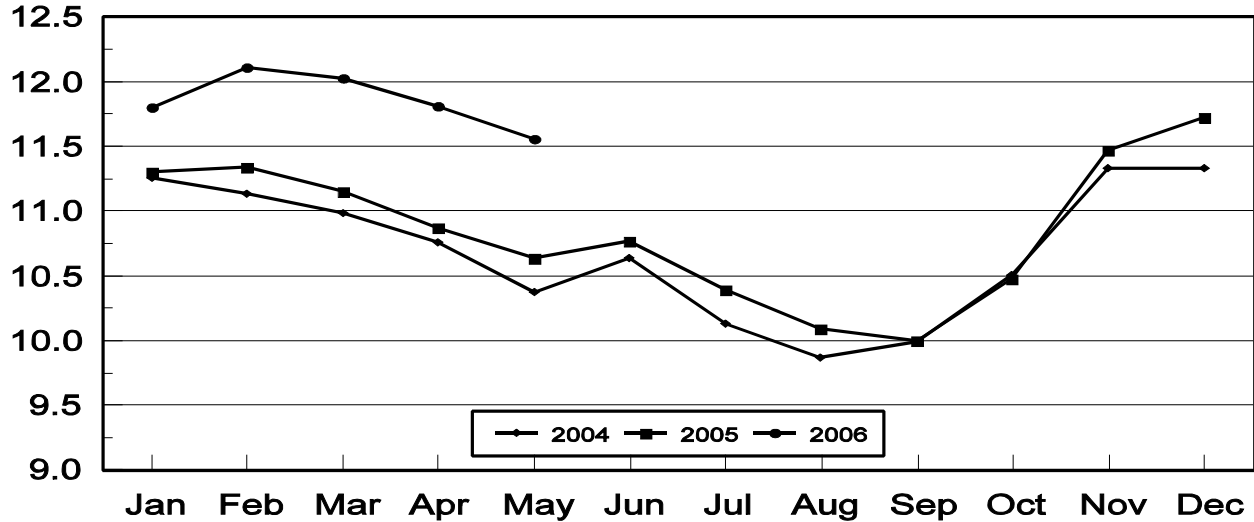
**Cattle on Feed: Number on Feed, 1,000+ Capacity Feedlots,
by Month, State, and United States 2005-2006 ¹**

State	May 1, 2005	Apr 1, 2006	May 1, 2006		
			Number	as % of 2005	as % of Apr
	<i>1,000 Head</i>	<i>1,000 Head</i>	<i>1,000 Head</i>	<i>Percent</i>	<i>Percent</i>
AZ	330	351	346	105	99
CA	500	535	530	106	99
CO	970	1,070	1,060	109	99
ID	240	250	245	102	98
IA	455	500	495	109	99
KS	2,260	2,590	2,530	112	98
NE	2,190	2,400	2,320	106	97
NM	114	139	132	116	95
OK	305	360	340	111	94
SD	200	210	200	100	95
TX	2,630	2,940	2,910	111	99
WA	147	152	152	103	100
Oth Sts	300	315	300	100	95
US	10,641	11,812	11,560	109	98

¹ Cattle and calves on feed are animals for slaughter market being fed a ration of grain or other concentrates and are expected to produce a carcass that will grade select or better.

**United States Cattle on Feed
1,000+ Capacity Feedlots**

Million Head



**Cattle on Feed: Number Placed on Feed, 1,000+ Capacity Feedlots,
by Month, State, and United States 2005-2006**

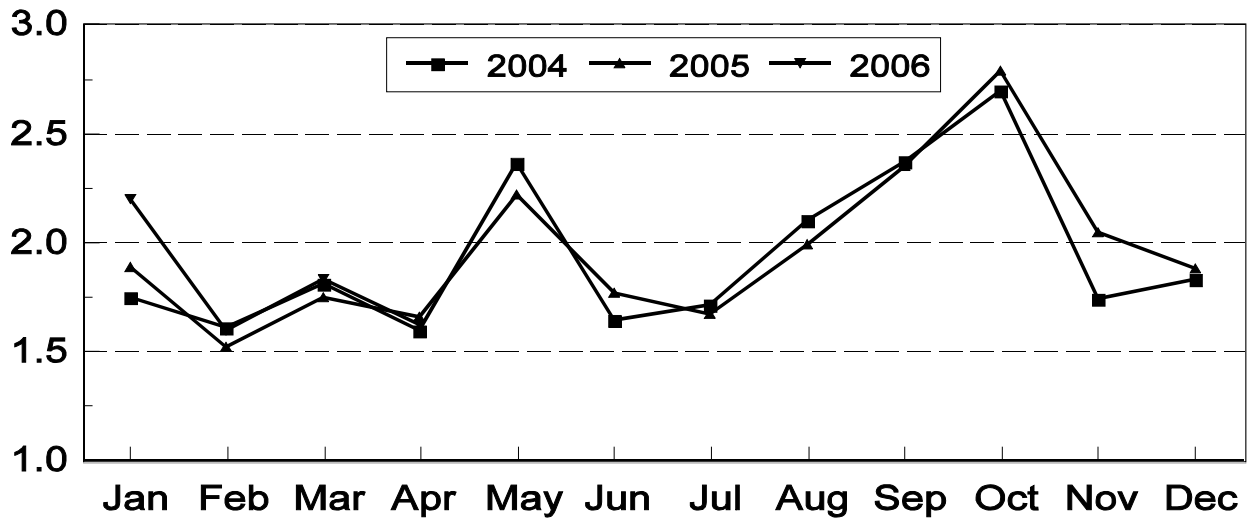
State	During Apr 2005	During Mar 2006	During Apr 2006		
			Number	as % of 2005	as % of Mar
	<i>1,000 Head</i>	<i>1,000 Head</i>	<i>1,000 Head</i>	<i>Percent</i>	<i>Percent</i>
AZ	31	30	27	87	90
CA	64	59	60	94	102
CO	120	155	140	117	90
ID	39	42	31	79	74
IA	55	55	64	116	116
KS	375	480	375	100	78
NE	320	335	320	100	96
NM	19	21	18	95	86
OK	52	68	48	92	71
SD	27	36	28	104	78
TX	500	485	455	91	94
WA	19	26	23	121	88
Oth Sts	39	45	40	103	89
US	1,660	1,837	1,629	98	89

**Cattle on Feed: Number Placed on Feed by Weight Group, 1,000+ Capacity
Feedlots, by Month, State, and United States, 2005-2006**

State	During April									
	Under 600		600-699		700-799		800 Plus		Total	
	2005	2006	2005	2006	2005	2006	2005	2006	2005	2006
	<i>1,000 Head</i>	<i>1,000 Head</i>	<i>1,000 Head</i>	<i>1,000 Head</i>	<i>1,000 Head</i>	<i>1,000 Head</i>	<i>1,000 Head</i>	<i>1,000 Head</i>	<i>1,000 Head</i>	<i>1,000 Head</i>
CO	20	40	20	25	35	35	45	40	120	140
KS	50	60	50	65	120	115	155	135	375	375
NE	45	60	40	45	105	85	130	130	320	320
TX	105	120	70	95	170	135	155	105	500	455
Oth Sts	120	105	45	40	70	74	110	120	345	339
US	340	385	225	270	500	444	595	530	1,660	1,629
	During March									
	Under 600		600-699		700-799		800 Plus		Total	
	2005	2006	2005	2006	2005	2006	2005	2006	2005	2006
	<i>1,000 Head</i>	<i>1,000 Head</i>	<i>1,000 Head</i>	<i>1,000 Head</i>	<i>1,000 Head</i>	<i>1,000 Head</i>	<i>1,000 Head</i>	<i>1,000 Head</i>	<i>1,000 Head</i>	<i>1,000 Head</i>
CO	15	25	35	30	65	60	50	40	165	155
KS	50	70	85	80	170	165	140	165	445	480
NE	34	50	52	50	92	90	122	145	300	335
TX	85	120	105	120	190	165	100	80	480	485
Oth Sts	115	115	43	62	92	85	110	120	360	382
US	299	380	320	342	609	565	522	550	1,750	1,837

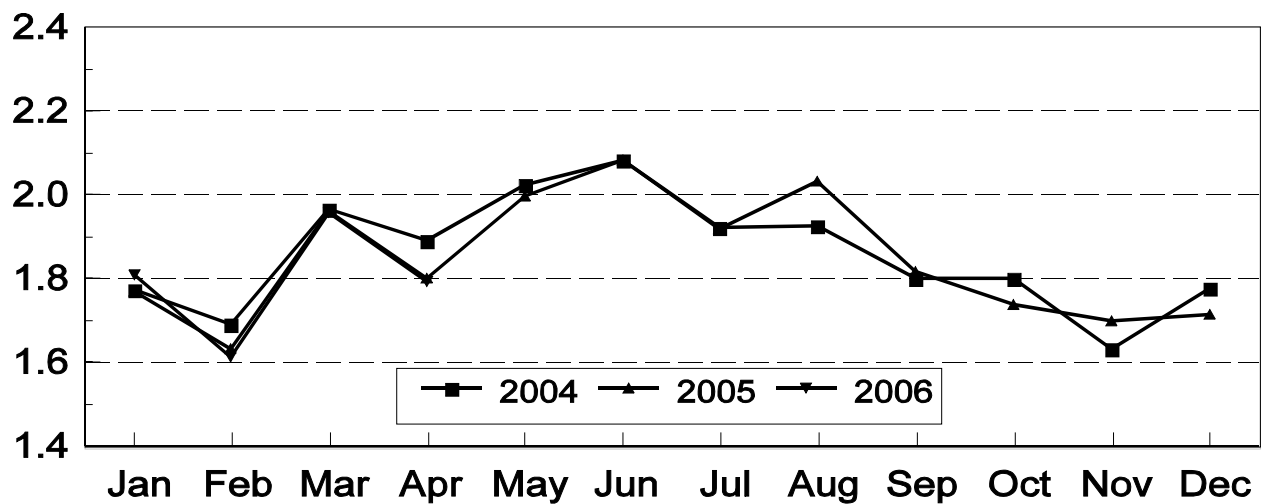
United States Cattle on Feed 1,000+ Capacity Feedlots Number Placed

Million Head



United States Cattle on Feed 1,000+ Capacity Feedlots Number Marketed

Million Head



**Cattle on Feed: Number Marketed, 1,000+ Capacity Feedlots,
by Month, State, and United States 2005-2006**

State	During Apr 2005	During Mar 2006	During Apr 2006		
			Number	as % of 2005	as % of Mar
	<i>1,000 Head</i>	<i>1,000 Head</i>	<i>1,000 Head</i>	<i>Percent</i>	<i>Percent</i>
AZ	24	28	23	96	82
CA	59	68	60	102	88
CO	150	165	140	93	85
ID	37	45	34	92	76
IA	53	73	66	125	90
KS	425	470	410	96	87
NE	380	370	390	103	105
NM	16	23	24	150	104
OK	70	72	66	94	92
SD	31	35	35	113	100
TX	480	540	470	98	87
WA	30	27	22	73	81
Oth Sts	46	42	54	117	129
US	1,801	1,958	1,794	100	92

**Cattle on Feed: Other Disappearance, 1,000+ Capacity Feedlots,
by Month, State, and United States 2005-2006 ¹**

State	During Apr 2005	During Mar 2006	During Apr 2006		
			Number	as % of 2005	as % of Mar
	<i>1,000 Head</i>	<i>1,000 Head</i>	<i>1,000 Head</i>	<i>Percent</i>	<i>Percent</i>
AZ	3	2	9	300	450
CA	5	6	5	100	83
CO	20	10	10	50	100
ID	2	2	2	100	100
IA	2	2	3	150	150
KS	30	30	25	83	83
NE	10	15	10	100	67
NM	2	2	1	50	50
OK	2	1	2	100	200
SD	1	1	3	300	300
TX	10	15	15	150	100
WA	1	1	1	100	100
Oth Sts	3	3	1	33	33
US	91	90	87	96	97

¹ Includes death loss, movement from feedlots to pasture, and shipments to other feedlots for further feeding.

Terms and Definitions of Cattle on Feed Estimates

Cattle on feed are animals being fed a ration of grain, silage, hay and/or protein supplement for slaughter market that are expected to produce a carcass that will grade select or better. It excludes cattle being "backgrounded only" for later sale as feeders or later placement in another feedlot.

Placements are cattle put into a feedlot, fed a ration which will produce a carcass that will grade select or better, and are intended for the slaughter market.

Marketings are cattle shipped out of feedlots to a slaughter market.

Other disappearance includes death loss, movement from feedlots to pasture, and shipments to other feedlots for further feeding.

Reliability of Cattle on Feed Estimates

Survey Procedures: During January and July all known feedlots in the U.S. with capacity of 1,000 or more head are surveyed to provide data for cattle on feed estimates. During the other months, all known feedlots from 17 States are surveyed. The 17 States account for 98 percent of the cattle on feed in feedlots with capacity of 1,000 or more head.

Estimating Procedures: These cattle on feed estimates were prepared by the Agricultural Statistics Board after reviewing recommendations and analysis submitted by each State office. Regional and State survey data were reviewed for reasonableness with each other and with estimates from the previous month when setting the current estimates.

Revision Policy: Revisions to previous estimates are made to improve month to month relationships. Estimates for the previous month are subject to revision in all States each month when current estimates are made. In February, all monthly estimates for the previous year, and the number of feedlots and annual marketings from two years ago are reviewed and subject to revisions. The reviews are primarily based on slaughter data, state check-off or brand data, and any other data that may have been received after the original estimate was made. Estimates will also be reviewed after data from the Census of Agriculture are available. No revisions will be made after that date and estimates become final.

Reliability: Since all 1000+ capacity cattle on feed operators in every State are not included in the monthly survey, survey estimates are subject to sampling variability. Survey results are also subject to non-sampling errors such as omissions, duplications, and mistakes in reporting, recording, and processing the data. The effects of these errors cannot be measured directly. They are minimized through rigid quality controls in the data collection process and through a careful review of all reported data for consistency and reasonableness.

To assist users in evaluating the reliability of estimates in this report, the "**Root Mean Square Error**" is shown for selected items in the following table. The "Root Mean Square Error" is a statistical measure based on past performance and is computed using the differences between first and latest estimates. The "Root Mean Square Error" for cattle on feed inventory estimates over the

past 10 years is .1 percent. This means that chances are 2 out of 3 that the final estimate will not be above or below the current estimate of 11.6 million head by more than .1 percent. Chances are 9 out of 10 that the difference will not exceed .2 percent.

The following table also shows a 10 year record of the range of differences between first and latest estimates for selected items. Using estimates of number on feed as an example, changes between the first estimate and the latest estimate during the past 10 years have averaged 10,000 head, ranging from 0 to 35,000 head. During this period the initial estimate has been below the final estimate 7 times, and above the final estimate 0 times. This does not imply that the initial estimate is likely to understate or overstate final inventory.

Reliability of U.S. May 1 Cattle on Feed Estimates ¹

Item	Root Mean Square Error	90% Confidence Level		Difference Between First and Final Estimates ¹			Number of Years	
		Percent	(000) Head	Average	Smallest	Largest	First Above Final	First Below Final
	<i>Percent</i>	<i>Percent</i>	<i>1,000 Head</i>	<i>1,000 Head</i>	<i>1,000 Head</i>	<i>1,000 Head</i>	<i>Number</i>	<i>Number</i>
Number on Feed	0.1	0.2	28.6	10	0	35	0	7
Placements	0.6	1.1	18.2	6	0	22	1	5
Marketings	0.3	0.6	10.1	4	0	12	1	5

¹ Based on data for the past 10 years.

ACCESS TO REPORTS!!

For your convenience, there are several ways to obtain NASS reports, data products, and services:

INTERNET ACCESS

All NASS reports are available free of charge on the worldwide Internet. For access, connect to the Internet and go to the NASS Home Page at: **www.nass.usda.gov**.

E-MAIL SUBSCRIPTION

All NASS reports are available by subscription free of charge direct to your e-mail address. Starting with the NASS Home Page at **www.nass.usda.gov**, under the right navigation, *Receive reports by Email*, click on **National** or **State**. Follow the instructions on the screen.

PRINTED REPORTS OR DATA PRODUCTS

CALL OUR TOLL-FREE ORDER DESK: 800-999-6779 (U.S. and Canada)
Other areas, please call 703-605-6220 FAX: 703-605-6900
(Visa, MasterCard, check, or money order acceptable for payment.)

ASSISTANCE

For **assistance** with general agricultural statistics or further information about NASS or its products or services, contact the **Agricultural Statistics Hotline** at **800-727-9540**, 7:30 a.m. to 4:00 p.m. ET, or e-mail: **nass@nass.usda.gov**.

The U.S. Department of Agriculture (USDA) prohibits discrimination in all its programs and activities on the basis of race, color, national origin, age, disability, and where applicable, sex, marital status, familial status, parental status, religion, sexual orientation, genetic information, political beliefs, reprisal, or because all or part of an individual's income is derived from any public assistance program. (Not all prohibited bases apply to all programs.) Persons with disabilities who require alternative means for communication of program information (Braille, large print, audiotape, etc.) should contact USDA's TARGET Center at (202) 720-2600 (voice and TDD).

To file a complaint of discrimination, write to USDA, Director, Office of Civil Rights, 1400 Independence Avenue, S.W., Washington, D.C. 20250-9410, or call (800) 795-3272 (voice) or (202) 720-6382 (TDD). USDA is an equal opportunity provider and employer.