



NASS

FACT FINDERS FOR AGRICULTURE
UNITED STATES DEPARTMENT OF AGRICULTURE

Washington, D.C.

Cattle On Feed

Released June 23, 2006, by the National Agricultural Statistics Service (NASS), Agricultural Statistics Board, U.S. Department of Agriculture. For information on *Cattle on Feed* call Mike Miller at (202) 720-3040, office hours 7:30 a.m. to 4:00 p.m. ET.

U.S. Cattle on Feed Up 4 Percent

Cattle and calves on feed for slaughter market in the United States for feedlots with capacity of 1,000 or more head totaled 11.2 million head on June 1, 2006. The inventory was 4 percent above June 1, 2005 and 5 percent above June 1, 2004. This is the second highest June 1 inventory since the series began in 1996.

Placements in feedlots during May totaled 1.91 million, 14 percent below 2005 and 19 percent below 2004. Net placements were 1.80 million. During May, placements of cattle and calves weighing less than 600 pounds were 440,000, 600-699 pounds were 370,000, 700-799 pounds were 503,000, and 800 pounds and greater were 600,000.

Marketings of fed cattle during May totaled 2.17 million, 9 percent above 2005 and 7 percent above 2004.

Other disappearance totaled 115,000 during May, 20 percent above 2005 and 46 percent above 2004.

**Cattle on Feed: Number on Feed, Placements, Marketings, and
Other Disappearance, 1,000+ Capacity Feedlots,
United States, June 1, 2004-2006**

Item	Number			2006 as % of	
	2004	2005	2006	2004	2005
	<i>1,000 Head</i>	<i>1,000 Head</i>	<i>1,000 Head</i>	<i>Percent</i>	<i>Percent</i>
On Feed May 1 ¹	10,375	10,641	*11,559	111	109
Placed on Feed During May	2,370	2,223	1,913	81	86
Fed Cattle Marketed During May	2,026	1,997	2,170	107	109
Other Disappearance During May ²	79	96	115	146	120
On Feed Jun 1 ¹	10,640	10,771	11,187	105	104

* Revised.

¹ Cattle and calves on feed are animals for slaughter market being fed a ration of grain or other concentrates and are expected to produce a carcass that will grade select or better.

² Includes death loss, movement from feedlots to pasture, and shipments to other feedlots for further feeding.

**Cattle on Feed: Number on Feed, Placements, Marketings, and
Other Disappearance, 1,000+ Capacity Feedlots,
United States, May 1, 2004-2006**

Item	Number			2006 as % of	
	2004	2005	2006	2004	2005
	<i>1,000 Head</i>	<i>1,000 Head</i>	<i>1,000 Head</i>	<i>Percent</i>	<i>Percent</i>
On Feed Apr 1 ¹	10,763	10,873	11,812	110	109
Placed on Feed During Apr	1,600	1,660	1,629	102	98
Fed Cattle Marketed During Apr	1,891	1,801	*1,795	95	100
Other Disappearance During Apr ²	97	91	87	90	96
On Feed May 1 ¹	10,375	10,641	*11,559	111	109

* Revised.

¹ Cattle and calves on feed are animals for slaughter market being fed a ration of grain or other concentrates and are expected to produce a carcass that will grade select or better.

² Includes death loss, movement from feedlots to pasture, and shipments to other feedlots for further feeding.

**Cattle on Feed: Number on Feed, 1,000+ Capacity Feedlots,
by Month, State, and United States 2005-2006¹**

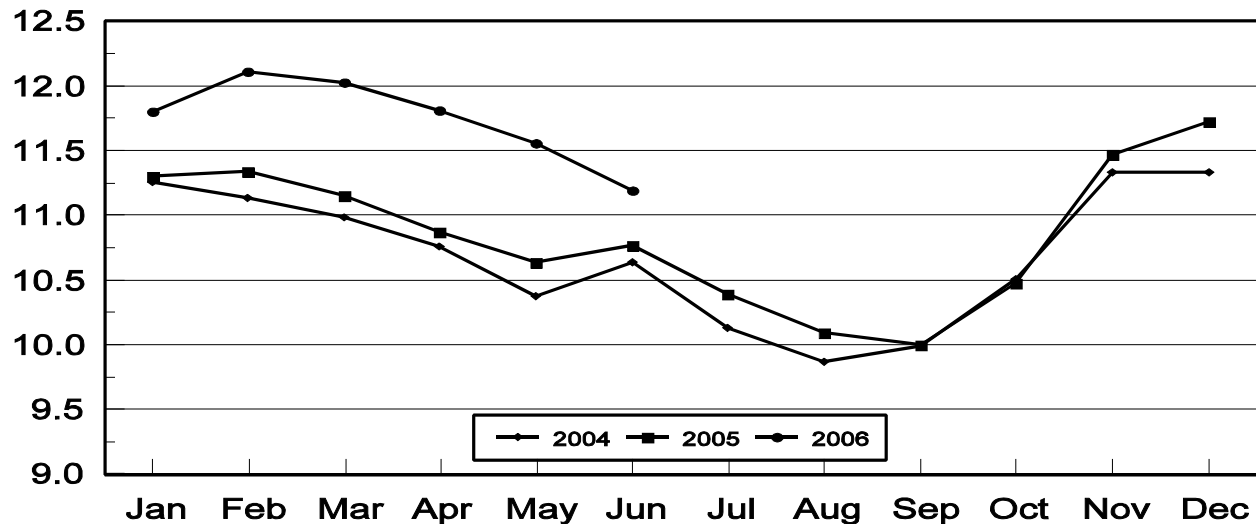
State	Jun 1, 2005	May 1, 2006	Jun 1, 2006		
			Number	as % of 2005	as % of May
	<i>1,000 Head</i>	<i>1,000 Head</i>	<i>1,000 Head</i>	<i>Percent</i>	<i>Percent</i>
AZ	331	*345	341	103	99
CA	515	530	535	104	101
CO	970	1,060	1,030	106	97
ID	245	245	230	94	94
IA	435	495	470	108	95
KS	2,280	2,530	2,400	105	95
NE	2,050	2,320	2,120	103	91
NM	127	132	135	106	102
OK	325	340	345	106	101
SD	186	200	195	105	98
TX	2,890	2,910	2,960	102	102
WA	137	152	141	103	93
Oth Sts	280	300	285	102	95
US	10,771	*11,559	11,187	104	97

* Revised.

¹ Cattle and calves on feed are animals for slaughter market being fed a ration of grain or other concentrates and are expected to produce a carcass that will grade select or better.

**United States Cattle on Feed
1,000+ Capacity Feedlots**

Million Head

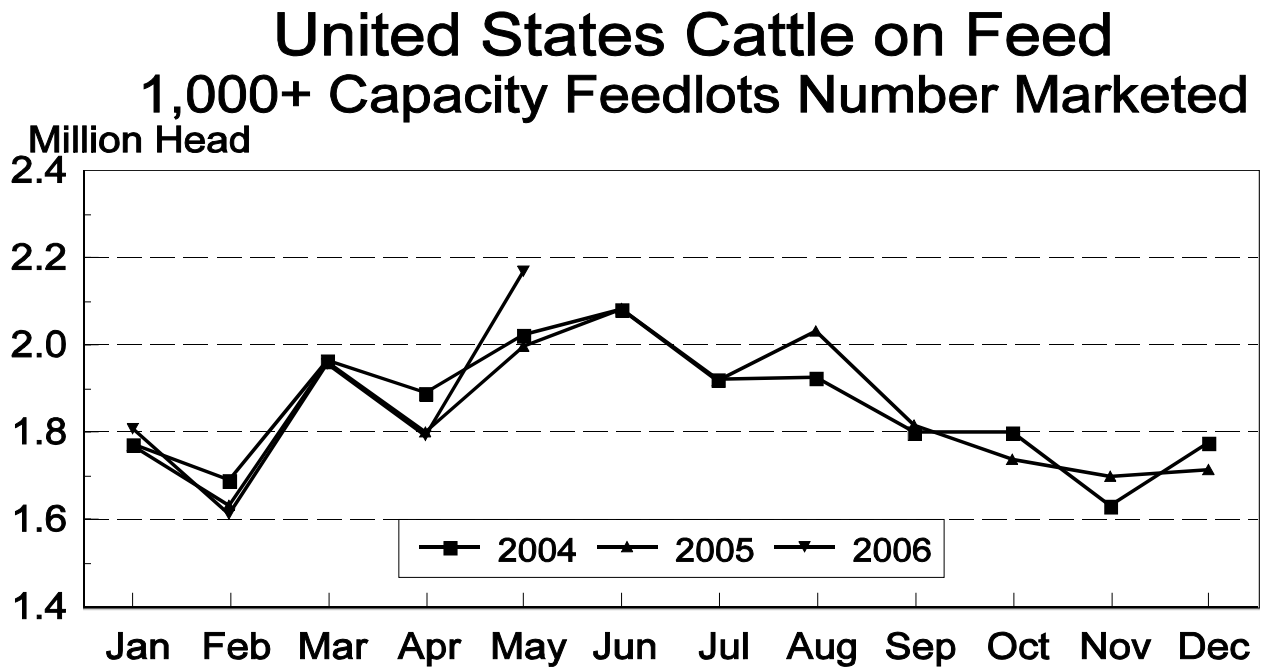
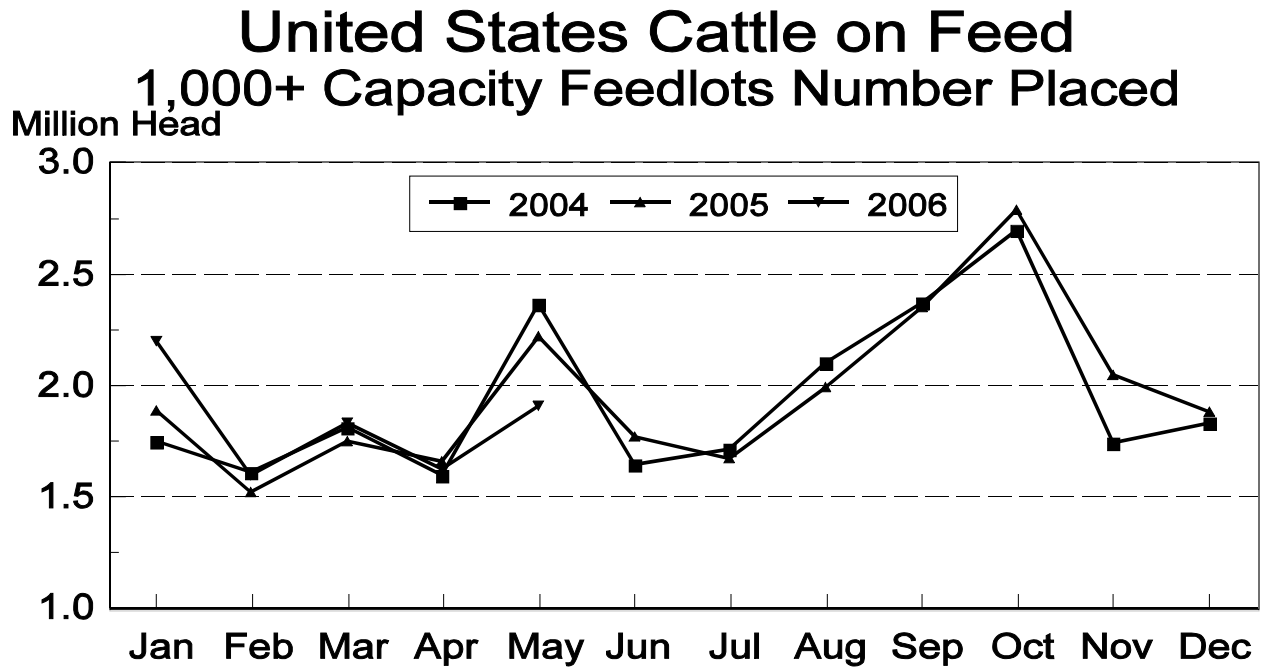


**Cattle on Feed: Number Placed on Feed, 1,000+ Capacity Feedlots,
by Month, State, and United States 2005-2006**

State	During May 2005	During Apr 2006	During May 2006		
			Number	as % of 2005	as % of Apr
	<i>1,000 Head</i>	<i>1,000 Head</i>	<i>1,000 Head</i>	<i>Percent</i>	<i>Percent</i>
AZ	32	27	29	91	107
CA	82	60	80	98	133
CO	165	140	175	106	125
ID	61	31	37	61	119
IA	55	64	51	93	80
KS	510	375	415	81	111
NE	360	320	340	94	106
NM	30	18	25	83	139
OK	86	48	76	88	158
SD	28	28	33	118	118
TX	750	455	590	79	130
WA	26	23	20	77	87
Oth Sts	38	40	42	111	105
US	2,223	1,629	1,913	86	117

**Cattle on Feed: Number Placed on Feed by Weight Group, 1,000+ Capacity
Feedlots, by Month, State, and United States, 2005-2006**

State	During May									
	Under 600		600-699		700-799		800 Plus		Total	
	2005	2006	2005	2006	2005	2006	2005	2006	2005	2006
	<i>1,000 Head</i>	<i>1,000 Head</i>	<i>1,000 Head</i>	<i>1,000 Head</i>	<i>1,000 Head</i>	<i>1,000 Head</i>	<i>1,000 Head</i>	<i>1,000 Head</i>	<i>1,000 Head</i>	<i>1,000 Head</i>
CO	20	35	30	40	60	50	55	50	165	175
KS	60	65	95	85	160	115	195	150	510	415
NE	45	65	45	50	110	80	160	145	360	340
TX	165	155	160	135	240	170	185	130	750	590
Oth Sts	145	120	60	60	93	88	140	125	438	393
US	435	440	390	370	663	503	735	600	2,223	1,913
	During April									
	Under 600		600-699		700-799		800 Plus		Total	
	2005	2006	2005	2006	2005	2006	2005	2006	2005	2006
	<i>1,000 Head</i>	<i>1,000 Head</i>	<i>1,000 Head</i>	<i>1,000 Head</i>	<i>1,000 Head</i>	<i>1,000 Head</i>	<i>1,000 Head</i>	<i>1,000 Head</i>	<i>1,000 Head</i>	<i>1,000 Head</i>
CO	20	40	20	25	35	35	45	40	120	140
KS	50	60	50	65	120	115	155	135	375	375
NE	45	60	40	45	105	85	130	130	320	320
TX	105	120	70	95	170	135	155	105	500	455
Oth Sts	120	105	45	40	70	74	110	120	345	339
US	340	385	225	270	500	444	595	530	1,660	1,629



**Cattle on Feed: Number Marketed, 1,000+ Capacity Feedlots,
by Month, State, and United States 2005-2006**

State	During May 2005	During Apr 2006	During May 2006		
			Number	as % of 2005	as % of Apr
	<i>1,000 Head</i>	<i>1,000 Head</i>	<i>1,000 Head</i>	<i>Percent</i>	<i>Percent</i>
AZ	29	*24	27	93	113
CA	62	60	70	113	117
CO	150	140	185	123	132
ID	54	34	47	87	138
IA	73	66	74	101	112
KS	465	410	520	112	127
NE	480	390	520	108	133
NM	16	24	21	131	88
OK	64	66	70	109	106
SD	38	35	34	89	97
TX	480	470	520	108	111
WA	34	22	30	88	136
Oth Sts	52	54	52	100	96
US	1,997	*1,795	2,170	109	121

* Revised.

**Cattle on Feed: Other Disappearance, 1,000+ Capacity Feedlots,
by Month, State, and United States 2005-2006 ¹**

State	During May 2005	During Apr 2006	During May 2006		
			Number	as % of 2005	as % of Apr
	<i>1,000 Head</i>	<i>1,000 Head</i>	<i>1,000 Head</i>	<i>Percent</i>	<i>Percent</i>
AZ	2	9	6	300	67
CA	5	5	5	100	100
CO	15	10	20	133	200
ID	2	2	5	250	250
IA	2	3	2	100	67
KS	25	25	25	100	100
NE	20	10	20	100	200
NM	1	1	1	100	100
OK	2	2	1	50	50
SD	4	3	4	100	133
TX	10	15	20	200	133
WA	2	1	1	50	100
Oth Sts	6	1	5	83	500
US	96	87	115	120	132

¹ Includes death loss, movement from feedlots to pasture, and shipments to other feedlots for further feeding.

Terms and Definitions of Cattle on Feed Estimates

Cattle on feed are animals being fed a ration of grain, silage, hay and/or protein supplement for slaughter market that are expected to produce a carcass that will grade select or better. It excludes cattle being "backgrounded only" for later sale as feeders or later placement in another feedlot.

Placements are cattle put into a feedlot, fed a ration which will produce a carcass that will grade select or better, and are intended for the slaughter market.

Marketings are cattle shipped out of feedlots to a slaughter market.

Other disappearance includes death loss, movement from feedlots to pasture, and shipments to other feedlots for further feeding.

Reliability of Cattle on Feed Estimates

Survey Procedures: During January and July all known feedlots in the U.S. with capacity of 1,000 or more head are surveyed to provide data for cattle on feed estimates. During the other months, all known feedlots from 17 States are surveyed. The 17 States account for 98 percent of the cattle on feed in feedlots with capacity of 1,000 or more head.

Estimating Procedures: These cattle on feed estimates were prepared by the Agricultural Statistics Board after reviewing recommendations and analysis submitted by each State office. Regional and State survey data were reviewed for reasonableness with each other and with estimates from the previous month when setting the current estimates.

Revision Policy: Revisions to previous estimates are made to improve month to month relationships. Estimates for the previous month are subject to revision in all States each month when current estimates are made. In February, all monthly estimates for the previous year, and the number of feedlots and annual marketings from two years ago are reviewed and subject to revisions. The reviews are primarily based on slaughter data, state check-off or brand data, and any other data that may have been received after the original estimate was made. Estimates will also be reviewed after data from the Census of Agriculture are available. No revisions will be made after that date and estimates become final.

Reliability: Since all 1000+ capacity cattle on feed operators in every State are not included in the monthly survey, survey estimates are subject to sampling variability. Survey results are also subject to non-sampling errors such as omissions, duplications, and mistakes in reporting, recording, and processing the data. The effects of these errors cannot be measured directly. They are minimized through rigid quality controls in the data collection process and through a careful review of all reported data for consistency and reasonableness.

To assist users in evaluating the reliability of estimates in this report, the "**Root Mean Square Error**" is shown for selected items in the following table. The "Root Mean Square Error" is a statistical measure based on past performance and is computed using the differences between first and latest estimates. The "Root Mean Square Error" for cattle on feed inventory estimates over the past 10 years is .2 percent. This means that chances are 2 out of 3 that the final estimate will not be above or below the current estimate of 11.2 million head by more than .2 percent. Chances are 9 out of 10 that the difference will not exceed .4 percent.

The following table also shows a 10 year record of the range of differences between first and latest estimates for selected items. Using estimates of number on feed as an example, changes between the first estimate and the latest estimate during the past 10 years have averaged 15,000 head, ranging from 0

to 50,000 head. During this period the initial estimate has been below the final estimate 9 times, and above the final estimate 0 times. This does not imply that the initial estimate is likely to understate or overstate final inventory.

Reliability of U.S. June 1 Cattle on Feed Estimates ¹

Item	Root Mean Square Error	90% Confidence Level		Difference Between First and Final Estimates ¹			Number of Years	
		Percent	(000) Head	Average	Smallest	Largest	First Above Final	First Below Final
	<i>Percent</i>	<i>Percent</i>	<i>1,000 Head</i>	<i>1,000 Head</i>	<i>1,000 Head</i>	<i>1,000 Head</i>	<i>Number</i>	<i>Number</i>
Number on Feed	0.2	0.4	40.5	15	0	50	0	9
Placements	0.8	1.5	27.9	11	0	40	1	8
Marketings	0.6	1.1	23.0	7	0	33	3	4

¹ Based on data for the past 10 years.

Information Contacts

Listed below are the commodity specialists in the Livestock Branch of the National Agricultural Statistics Service to contact for additional information.

- Dan Kerestes, Chief Livestock Branch (202) 720-3570
- William Weaver, Head, Livestock Section (202) 720-3570
 - Bruce Boess - Hogs and Pigs (202) 720-3106
 - Shawn Clark - Dairy Products (202) 690-3236
 - Scott Hollis - Sheep & Lambs, Goats (202) 720-4751
 - Mike Miller - Cattle, Cattle on Feed (202) 720-3040
 - Katy Paulsen - Livestock Slaughter (515) 284-4340
 - Ann Summa - Milk Production and Milk Cows (202) 720-3278
 - Charmaine Wilson - Dairy Products Prices (202) 690-2168

ACCESS TO REPORTS!!

For your convenience, there are several ways to obtain NASS reports, data products, and services:

INTERNET ACCESS

All NASS reports are available free of charge on the worldwide Internet. For access, connect to the Internet and go to the NASS Home Page at: www.nass.usda.gov.

E-MAIL SUBSCRIPTION

All NASS reports are available by subscription free of charge direct to your e-mail address. Starting with the NASS Home Page at www.nass.usda.gov, under the right navigation, *Receive reports by Email*, click on **National** or **State**. Follow the instructions on the screen.

PRINTED REPORTS OR DATA PRODUCTS

CALL OUR TOLL-FREE ORDER DESK: 800-999-6779 (U.S. and Canada)
Other areas, please call 703-605-6220 FAX: 703-605-6900
(Visa, MasterCard, check, or money order acceptable for payment.)

ASSISTANCE

For **assistance** with general agricultural statistics or further information about NASS or its products or services, contact the **Agricultural Statistics Hotline** at **800-727-9540**, 7:30 a.m. to 4:00 p.m. ET, or e-mail: nass@nass.usda.gov.

The U.S. Department of Agriculture (USDA) prohibits discrimination in all its programs and activities on the basis of race, color, national origin, age, disability, and where applicable, sex, marital status, familial status, parental status, religion, sexual orientation, genetic information, political beliefs, reprisal, or because all or part of an individual's income is derived from any public assistance program. (Not all prohibited bases apply to all programs.) Persons with disabilities who require alternative means for communication of program information (Braille, large print, audiotape, etc.) should contact USDA's TARGET Center at (202) 720-2600 (voice and TDD).

To file a complaint of discrimination, write to USDA, Director, Office of Civil Rights, 1400 Independence Avenue, S.W., Washington, D.C. 20250-9410, or call (800) 795-3272 (voice) or (202) 720-6382 (TDD). USDA is an equal opportunity provider and employer.