



NASS

FACT FINDERS FOR AGRICULTURE
UNITED STATES DEPARTMENT OF AGRICULTURE

Washington, D.C.

Cattle On Feed

Released July 21, 2006, by the National Agricultural Statistics Service (NASS), Agricultural Statistics Board, U.S. Department of Agriculture. For information on *Cattle on Feed* call Mike Miller at (202) 720-3040, office hours 7:30 a.m. to 4:00 p.m. ET.

U.S. Cattle on Feed Up 5 Percent

Cattle and calves on feed for slaughter market in the United States for feedlots with capacity of 1,000 or more head totaled 10.9 million head on July 1, 2006. The inventory was 5 percent above July 1, 2005 and 7 percent above July 1, 2004. This is the second highest July 1 inventory since the series began in 1996. The inventory included 7.09 million steers and steer calves, up 4 percent from the previous year. This group accounted for 65 percent of the total inventory. Heifers and heifer calves accounted for 3.71 million head, up 5 percent from 2005.

Placements in feedlots during June totaled 1.95 million, 10 percent above 2005 and 18 percent above 2004. This is the second highest placements for the month of June since the series began in 1996. Net placements were 1.89 million. During June, placements of cattle and calves weighing less than 600 pounds were 565,000, 600-699 pounds were 430,000, 700-799 pounds were 456,000, and 800 pounds and greater were 500,000.

Marketings of fed cattle during June totaled 2.20 million, 6 percent above 2005 and up 6 percent from 2004. This is the second highest fed cattle marketings for the month of June since the series began in 1996.

Other disappearance totaled 63,000 during June, unchanged from 2005 but 10 percent below 2004.

U.S. All Cattle on Feed Up 4 Percent

Cattle on feed July 1, 2006, from all feedlots in the United States, totaled 12.5 million, up 4 percent from the 12.0 million on July 1, 2005 and up 6 percent from July 1, 2004. Cattle on feed in feedlots with 1,000 or more head accounted for 87 percent of the total cattle on feed on July 1, 2006, unchanged from July 1, 2005.

**Cattle on Feed: Number on Feed, Placements, Marketings, and
Other Disappearance, 1,000+ Capacity Feedlots,
United States, July 1, 2004-2006**

Item	Number			2006 as % of	
	2004	2005	2006	2004	2005
	<i>1,000 Head</i>	<i>1,000 Head</i>	<i>1,000 Head</i>	<i>Percent</i>	<i>Percent</i>
On Feed Jun 1 ¹	10,640	10,771	11,187	105	104
Placed on Feed During Jun	1,647	1,769	1,951	118	110
Fed Cattle Marketed During Jun	2,085	2,083	2,203	106	106
Other Disappearance During Jun ²	70	63	63	90	100
On Feed Jul 1 ¹	10,132	10,394	10,872	107	105

¹ Cattle and calves on feed are animals for slaughter market being fed a ration of grain or other concentrates and are expected to produce a carcass that will grade select or better.

² Includes death loss, movement from feedlots to pasture, and shipments to other feedlots for further feeding.

**Cattle on Feed: Number on Feed, Placements, Marketings, and
Other Disappearance, 1,000+ Capacity Feedlots,
United States, June 1, 2004-2006**

Item	Number			2006 as % of	
	2004	2005	2006	2004	2005
	<i>1,000 Head</i>	<i>1,000 Head</i>	<i>1,000 Head</i>	<i>Percent</i>	<i>Percent</i>
On Feed May 1 ¹	10,375	10,641	11,559	111	109
Placed on Feed During May	2,370	2,223	1,913	81	86
Fed Cattle Marketed During May	2,026	1,997	2,170	107	109
Other Disappearance During May ²	79	96	115	146	120
On Feed Jun 1 ¹	10,640	10,771	11,187	105	104

¹ Cattle and calves on feed are animals for slaughter market being fed a ration of grain or other concentrates and are expected to produce a carcass that will grade select or better.

² Includes death loss, movement from feedlots to pasture, and shipments to other feedlots for further feeding.

**Cattle on Feed: Number on Feed by Class, 1,000+ Capacity Feedlots,
United States, July 1, 2004-2006**

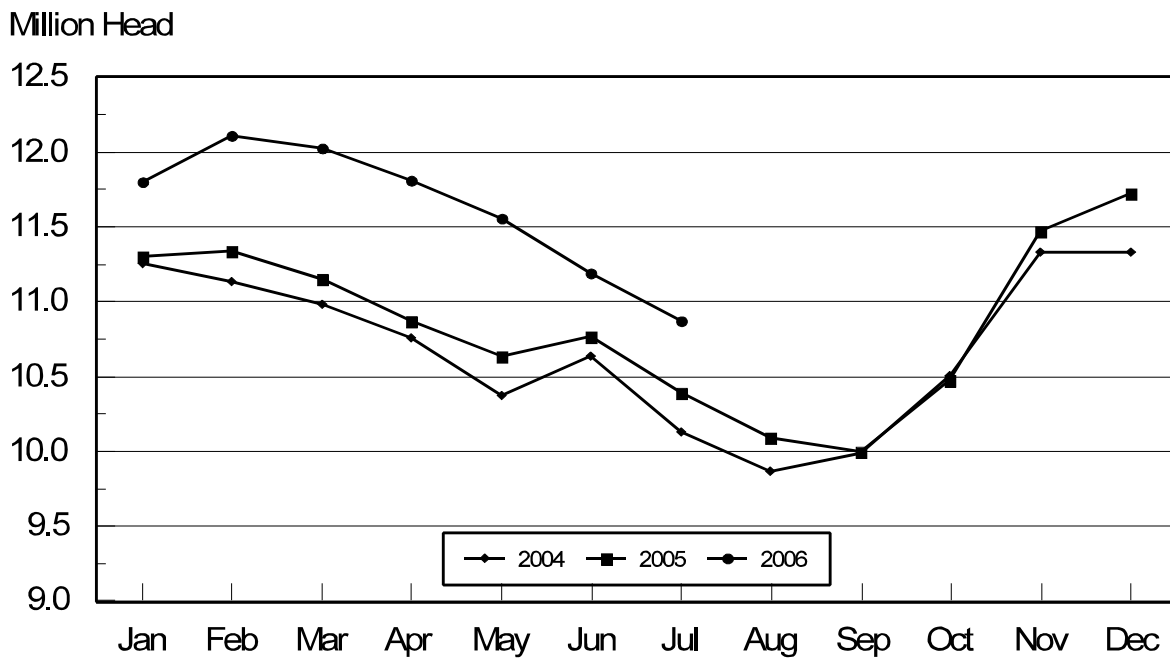
Item	Number			2006 as % of	
	2004	2005	2006	2004	2005
	<i>1,000 Head</i>	<i>1,000 Head</i>	<i>1,000 Head</i>	<i>Percent</i>	<i>Percent</i>
Class on Feed Jul 1					
Steers and Steer Calves	6,379	6,802	7,092	111	104
Heifers and Heifer Calves	3,701	3,527	3,710	100	105
Cows and Bulls	52	65	70	135	108

**Cattle on Feed: Number on Feed, 1,000+ Capacity Feedlots,
by Month, State, and United States 2005-2006 ¹**

State	Jul 1, 2005	Jun 1, 2006	Jul 1, 2006		
			Number	as % of 2005	as % of Jun
	<i>1,000 Head</i>	<i>1,000 Head</i>	<i>1,000 Head</i>	<i>Percent</i>	<i>Percent</i>
AZ	324	341	344	106	101
CA	520	535	530	102	99
CO	900	1,030	980	109	95
ID	260	230	230	88	100
IA	415	470	460	111	98
KS	2,200	2,400	2,280	104	95
NE	1,820	2,120	1,990	109	94
NM	132	135	140	106	104
OK	320	345	340	106	99
SD	161	195	180	112	92
TX	2,950	2,960	2,980	101	101
WA	142	141	148	104	105
Oth Sts	250	285	270	108	95
US	10,394	11,187	10,872	105	97

¹ Cattle and calves on feed are animals for slaughter market being fed a ration of grain or other concentrates and are expected to produce a carcass that will grade select or better.

**United States Cattle on Feed
1,000+ Capacity Feedlots**



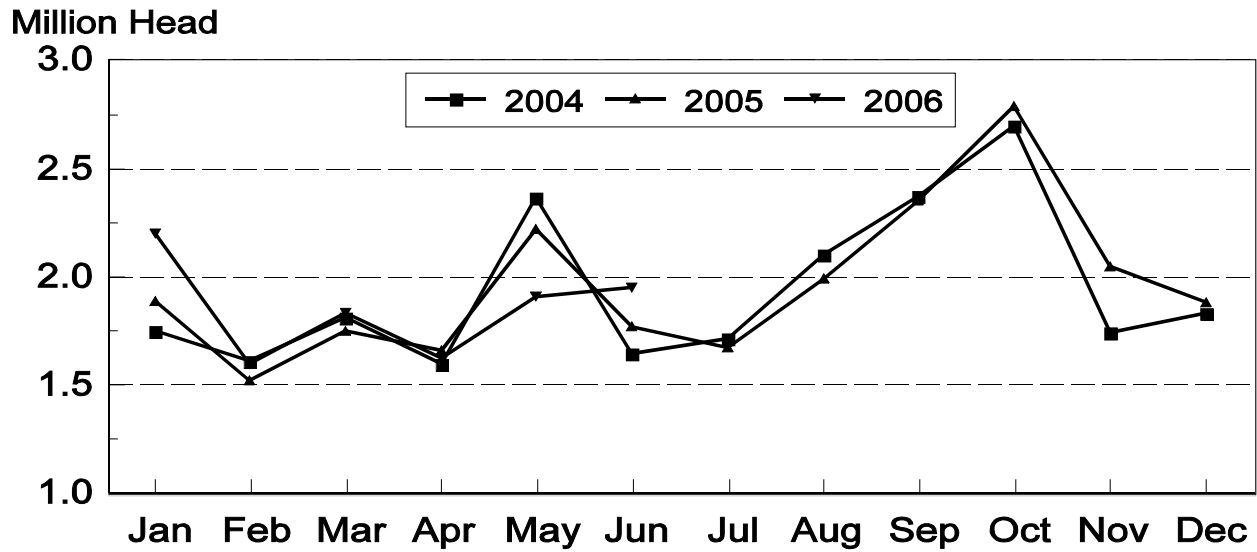
**Cattle on Feed: Number Placed on Feed, 1,000+ Capacity Feedlots,
by Month, State, and United States 2005-2006**

State	During Jun 2005	During May 2006	During Jun 2006		
			Number	as % of 2005	as % of May
	<i>1,000 Head</i>	<i>1,000 Head</i>	<i>1,000 Head</i>	<i>Percent</i>	<i>Percent</i>
AZ	29	29	34	117	117
CA	73	80	73	100	91
CO	130	175	175	135	100
ID	70	37	58	83	157
IA	49	51	59	120	116
KS	400	415	445	111	107
NE	290	340	370	128	109
NM	26	25	33	127	132
OK	54	76	63	117	83
SD	26	33	29	112	88
TX	550	590	530	96	90
WA	41	20	39	95	195
Oth Sts	31	42	43	139	102
US	1,769	1,913	1,951	110	102

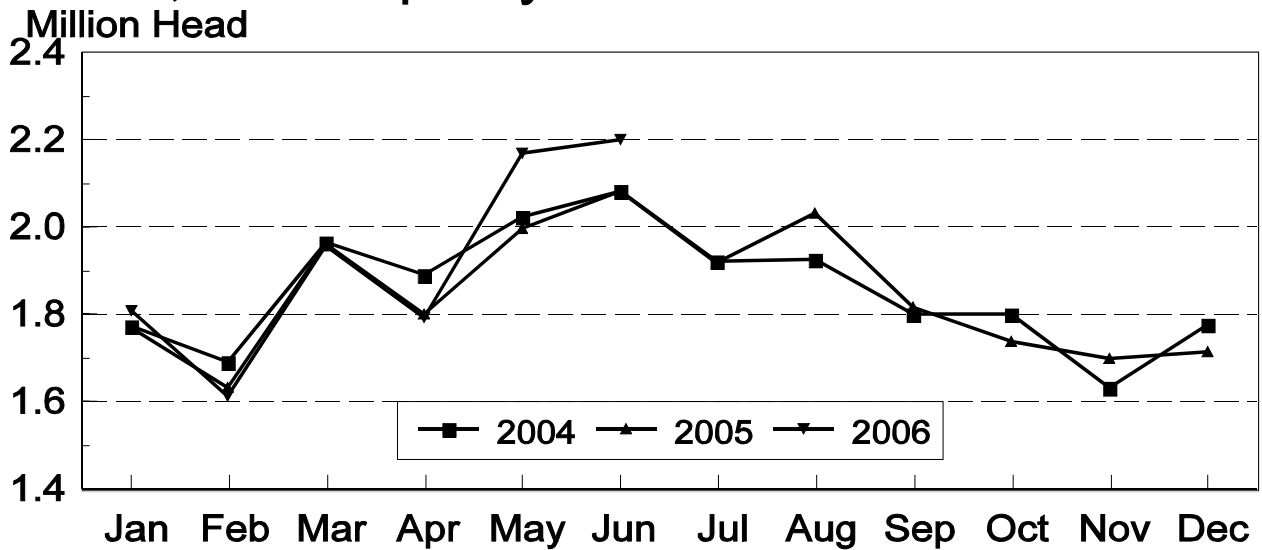
**Cattle on Feed: Number Placed on Feed by Weight Group, 1,000+ Capacity
Feedlots, by Month, State, and United States, 2005-2006**

State	During June									
	Under 600		600-699		700-799		800 Plus		Total	
	2005	2006	2005	2006	2005	2006	2005	2006	2005	2006
	<i>1,000 Head</i>	<i>1,000 Head</i>	<i>1,000 Head</i>	<i>1,000 Head</i>	<i>1,000 Head</i>	<i>1,000 Head</i>	<i>1,000 Head</i>	<i>1,000 Head</i>	<i>1,000 Head</i>	<i>1,000 Head</i>
CO	25	50	25	35	40	55	40	35	130	175
KS	80	115	85	105	125	105	110	120	400	445
NE	52	80	38	60	75	90	125	140	290	370
TX	130	190	150	170	160	115	110	55	550	530
Oth Sts	125	130	49	60	80	91	145	150	399	431
US	412	565	347	430	480	456	530	500	1,769	1,951
	During May									
	Under 600		600-699		700-799		800 Plus		Total	
	2005	2006	2005	2006	2005	2006	2005	2006	2005	2006
	<i>1,000 Head</i>	<i>1,000 Head</i>	<i>1,000 Head</i>	<i>1,000 Head</i>	<i>1,000 Head</i>	<i>1,000 Head</i>	<i>1,000 Head</i>	<i>1,000 Head</i>	<i>1,000 Head</i>	<i>1,000 Head</i>
CO	20	35	30	40	60	50	55	50	165	175
KS	60	65	95	85	160	115	195	150	510	415
NE	45	65	45	50	110	80	160	145	360	340
TX	165	155	160	135	240	170	185	130	750	590
Oth Sts	145	120	60	60	93	88	140	125	438	393
US	435	440	390	370	663	503	735	600	2,223	1,913

United States Cattle on Feed 1,000+ Capacity Feedlots Number Placed



United States Cattle on Feed 1,000+ Capacity Feedlots Number Marketed



**Cattle on Feed: Number Marketed, 1,000+ Capacity Feedlots,
by Month, State, and United States 2005-2006**

State	During Jun 2005	During May 2006	During Jun 2006		
			Number	as % of 2005	as % of May
	<i>1,000 Head</i>	<i>1,000 Head</i>	<i>1,000 Head</i>	<i>Percent</i>	<i>Percent</i>
AZ	35	27	30	86	111
CA	63	70	74	117	106
CO	190	185	215	113	116
ID	54	47	55	102	117
IA	68	74	66	97	89
KS	465	520	550	118	106
NE	510	520	490	96	94
NM	18	21	27	150	129
OK	58	70	67	116	96
SD	48	34	41	85	121
TX	480	520	500	104	96
WA	35	30	31	89	103
Oth Sts	59	52	57	97	110
US	2,083	2,170	2,203	106	102

**Cattle on Feed: Other Disappearance, 1,000+ Capacity Feedlots,
by Month, State, and United States 2005-2006 ¹**

State	During Jun 2005	During May 2006	During Jun 2006		
			Number	as % of 2005	as % of May
	<i>1,000 Head</i>	<i>1,000 Head</i>	<i>1,000 Head</i>	<i>Percent</i>	<i>Percent</i>
AZ	1	6	1	100	17
CA	5	5	4	80	80
CO	10	20	10	100	50
ID	1	5	3	300	60
IA	1	2	3	300	150
KS	15	25	15	100	60
NE	10	20	10	100	50
NM	3	1	1	33	100
OK	1	1	1	100	100
SD	3	4	3	100	75
TX	10	20	10	100	50
WA	1	1	1	100	100
Oth Sts	2	5	1	50	20
US	63	115	63	100	55

¹ Includes death loss, movement from feedlots to pasture, and shipments to other feedlots for further feeding.

**Cattle on Feed: Number on Feed by Class, 1,000+ Capacity Feedlots,
by Quarter, State, and United States, 2005-2006**

State	Steers & Steer Calves			Heifers & Heifer Calves			Cows and Bulls		
	Jul 1, 2005	Apr 1, 2006	Jul 1, 2006	Jul 1, 2005	Apr 1, 2006	Jul 1, 2006	Jul 1, 2005	Apr 1, 2006	Jul 1, 2006
	<i>1,000 Head</i>	<i>1,000 Head</i>	<i>1,000 Head</i>	<i>1,000 Head</i>	<i>1,000 Head</i>	<i>1,000 Head</i>	<i>1,000 Head</i>	<i>1,000 Head</i>	<i>1,000 Head</i>
AZ	319	342	341	5	9	3	0	0	0
CA	490	500	487	30	35	40	0	0	3
CO	555	740	650	340	320	320	5	10	10
ID	169	158	149	89	90	79	2	2	2
IA	265	355	320	149	144	139	1	1	1
KS	1,280	1,460	1,300	900	1,110	970	20	20	10
NE	1,150	1,480	1,240	660	900	740	10	20	10
NM	77	77	84	55	62	56	0	0	0
OK	205	245	240	114	115	100	1	0	0
SD	75	115	85	69	79	72	17	16	23
TX	1,940	1,940	1,900	1,005	999	1,075	5	1	5
WA	87	88	81	54	62	66	1	2	1
Oth Sts	190	240	215	57	72	50	3	3	5
US	6,802	7,740	7,092	3,527	3,997	3,710	65	75	70

**Cattle on Feed: Total Number on Feed, United States,
July 1, 2004-2006 ¹**

State	Jul 1, 2004	Jul 1, 2005	July 1, 2006		
			Number	as % of 2004	as % of 2005
	<i>1,000 Head</i>	<i>1,000 Head</i>	<i>1,000 Head</i>	<i>Percent</i>	<i>Percent</i>
US	11,800	12,000	12,500	106	104

¹ Cattle and calves on feed are animals for slaughter market being fed a ration of grain or other concentrates and are expected to produce a carcass that will grade select or better.

Terms and Definitions of Cattle on Feed Estimates

Cattle on feed are animals being fed a ration of grain, silage, hay and/or protein supplement for slaughter market that are expected to produce a carcass that will grade select or better. It excludes cattle being "backgrounded only" for later sale as feeders or later placement in another feedlot.

Placements are cattle put into a feedlot, fed a ration which will produce a carcass that will grade select or better, and are intended for the slaughter market.

Marketings are cattle shipped out of feedlots to a slaughter market.

Other disappearance includes death loss, movement from feedlots to pasture, and shipments to other feedlots for further feeding.

Reliability of Cattle on Feed Estimates

Survey Procedures: During January and July all known feedlots in the U.S. with capacity of 1,000 or more head are surveyed to provide data for cattle on feed estimates. During the other months, all known feedlots from 17 States are surveyed. The 17 States account for 98 percent of the cattle on feed in feedlots with capacity of 1,000 or more head.

Estimating Procedures: These cattle on feed estimates were prepared by the Agricultural Statistics Board after reviewing recommendations and analysis submitted by each State office. Regional and State survey data were reviewed for reasonableness with each other and with estimates from the previous month when setting the current estimates.

Revision Policy: Revisions to previous estimates are made to improve month to month relationships. Estimates for the previous month are subject to revision in all States each month when current estimates are made. In February, all monthly estimates for the previous year, and the number of feedlots and annual marketings from two years ago are reviewed and subject to revisions. The reviews are primarily based on slaughter data, state check-off or brand data, and any other data that may have been received after the original estimate was made. Estimates will also be reviewed after data from the Census of Agriculture are available. No revisions will be made after that date and estimates become final.

Reliability: Since all 1000+ capacity cattle on feed operators in every State are not included in the monthly survey, survey estimates are subject to sampling variability. Survey results are also subject to non-sampling errors such as omissions, duplications, and mistakes in reporting, recording, and processing the data. The effects of these errors cannot be measured directly. They are minimized through rigid quality controls in the data collection process and through a careful review of all reported data for consistency and reasonableness.

To assist users in evaluating the reliability of estimates in this report, the "**Root Mean Square Error**" is shown for selected items in the following table. The "Root Mean Square Error" is a statistical measure based on past performance and is computed using the differences between first and latest estimates. The "Root Mean Square Error" for cattle on feed inventory estimates over the past 10 years is .1 percent. This means that chances are 2 out of 3 that the final estimate will not be above or below the current estimate of 10.9 million head by more than .1 percent. Chances are 9 out of 10 that the difference will not exceed .2 percent.

The following table also shows a 10 year record of the range of differences between first and latest estimates for selected items. Using estimates of number on feed as an example, changes between the first estimate and the latest estimate during the past 10 years have averaged 7,000 head, ranging from 0

to 20,000 head. During this period the initial estimate has been below the final estimate 4 times, and above the final estimate 2 times. This does not imply that the initial estimate is likely to understate or overstate final inventory.

Reliability of U.S. July 1 Cattle on Feed Estimates ¹

Item	Root Mean Square Error	90% Confidence Level		Difference Between First and Final Estimates ¹			Number of Years	
		Percent	(000) Head	Average	Smallest	Largest	First Above Final	First Below Final
	<i>Percent</i>	<i>Percent</i>	<i>1,000 Head</i>	<i>1,000 Head</i>	<i>1,000 Head</i>	<i>1,000 Head</i>	<i>Number</i>	<i>Number</i>
Number on Feed	0.1	0.2	18.3	7	0	20	2	4
Placements	0.3	0.6	10.8	3	0	10	2	3
Marketings	0.4	0.7	15.6	5	0	20	1	5

¹ Based on data for the past 10 years.

Information Contacts

Listed below are the commodity specialists in the Livestock Branch of the National Agricultural Statistics Service to contact for additional information.

Dan Kerestes, Chief, Livestock Branch (202) 720-3570

William Weaver, Head, Livestock Section (202) 720-3570

 Bruce Boess - Hogs and Pigs (202) 720-3106

 Shawn Clark - Dairy Products (202) 690-3236

 Jason Hardegree - Milk Production and Milk Cows (202) 720-3278

 Scott Hollis - Sheep & Lambs, Goats (202) 720-4751

 Mike Miller - Cattle, Cattle on Feed (202) 720-3040

 Katy Paulsen - Livestock Slaughter (515) 284-4340

 Charmaine Wilson - Dairy Products Prices (202) 690-2168

ACCESS TO REPORTS!!

For your convenience, there are several ways to obtain NASS reports, data products, and services:

INTERNET ACCESS

All NASS reports are available free of charge on the worldwide Internet. For access, connect to the Internet and go to the NASS Home Page at: www.nass.usda.gov.

E-MAIL SUBSCRIPTION

All NASS reports are available by subscription free of charge direct to your e-mail address. Starting with the NASS Home Page at www.nass.usda.gov, under the right navigation, *Receive reports by Email*, click on **National** or **State**. Follow the instructions on the screen.

PRINTED REPORTS OR DATA PRODUCTS

CALL OUR TOLL-FREE ORDER DESK: 800-999-6779 (U.S. and Canada)
Other areas, please call 703-605-6220 FAX: 703-605-6900
(Visa, MasterCard, check, or money order acceptable for payment.)

ASSISTANCE

For **assistance** with general agricultural statistics or further information about NASS or its products or services, contact the **Agricultural Statistics Hotline** at **800-727-9540**, 7:30 a.m. to 4:00 p.m. ET, or e-mail: nass@nass.usda.gov.

The U.S. Department of Agriculture (USDA) prohibits discrimination in all its programs and activities on the basis of race, color, national origin, age, disability, and where applicable, sex, marital status, familial status, parental status, religion, sexual orientation, genetic information, political beliefs, reprisal, or because all or part of an individual's income is derived from any public assistance program. (Not all prohibited bases apply to all programs.) Persons with disabilities who require alternative means for communication of program information (Braille, large print, audiotape, etc.) should contact USDA's TARGET Center at (202) 720-2600 (voice and TDD).

To file a complaint of discrimination, write to USDA, Director, Office of Civil Rights, 1400 Independence Avenue, S.W., Washington, D.C. 20250-9410, or call (800) 795-3272 (voice) or (202) 720-6382 (TDD). USDA is an equal opportunity provider and employer.