



NASS

FACT FINDERS FOR AGRICULTURE
UNITED STATES DEPARTMENT OF AGRICULTURE

Washington, D.C.

Cattle On Feed

Released August 18, 2006, by the National Agricultural Statistics Service (NASS), Agricultural Statistics Board, U.S. Department of Agriculture. For information on *Cattle on Feed* call Mike Miller at (202) 720-3040, office hours 7:30 a.m. to 4:00 p.m. ET.

U.S. Cattle on Feed Up 7 Percent

Cattle and calves on feed for slaughter market in the United States for feedlots with capacity of 1,000 or more head totaled 10.8 million head on August 1, 2006. The inventory was 7 percent above August 1, 2005 and 10 percent above August 1, 2004. This is the second highest August 1 inventory since the series began in 1996.

Placements in feedlots during July totaled 1.96 million, 17 percent above 2005 and 14 percent above 2004. Net placements were 1.91 million. During July, placements of cattle and calves weighing less than 600 pounds were 570,000, 600-699 pounds were 403,000, 700-799 pounds were 490,000, and 800 pounds and greater were 500,000.

Marketings of fed cattle during July totaled 1.96 million, 2 percent above 2005 and 2 percent above 2004.

Other disappearance totaled 58,000 during July, 5 percent below 2005 but unchanged from 2004.

**Cattle on Feed: Number on Feed, Placements, Marketings, and
Other Disappearance, 1,000+ Capacity Feedlots,
United States, August 1, 2004-2006**

Item	Number			2006 as % of	
	2004	2005	2006	2004	2005
	<i>1,000 Head</i>	<i>1,000 Head</i>	<i>1,000 Head</i>	<i>Percent</i>	<i>Percent</i>
On Feed Jul 1 ¹	10,132	10,394	10,872	107	105
Placed on Feed During Jul	1,719	1,678	1,963	114	117
Fed Cattle Marketed During Jul	1,925	1,918	1,955	102	102
Other Disappearance During Jul ²	58	61	58	100	95
On Feed Aug 1 ¹	9,868	10,093	10,822	110	107

¹ Cattle and calves on feed are animals for slaughter market being fed a ration of grain or other concentrates and are expected to produce a carcass that will grade select or better.

² Includes death loss, movement from feedlots to pasture, and shipments to other feedlots for further feeding.

**Cattle on Feed: Number on Feed, Placements, Marketings, and
Other Disappearance, 1,000+ Capacity Feedlots,
United States, July 1, 2004-2006**

Item	Number			2006 as % of	
	2004	2005	2006	2004	2005
	<i>1,000 Head</i>	<i>1,000 Head</i>	<i>1,000 Head</i>	<i>Percent</i>	<i>Percent</i>
On Feed Jun 1 ¹	10,640	10,771	11,187	105	104
Placed on Feed During Jun	1,647	1,769	*1,946	118	110
Fed Cattle Marketed During Jun	2,085	2,083	*2,198	105	106
Other Disappearance During Jun ²	70	63	63	90	100
On Feed Jul 1 ¹	10,132	10,394	10,872	107	105

* Revised.

¹ Cattle and calves on feed are animals for slaughter market being fed a ration of grain or other concentrates and are expected to produce a carcass that will grade select or better.

² Includes death loss, movement from feedlots to pasture, and shipments to other feedlots for further feeding.

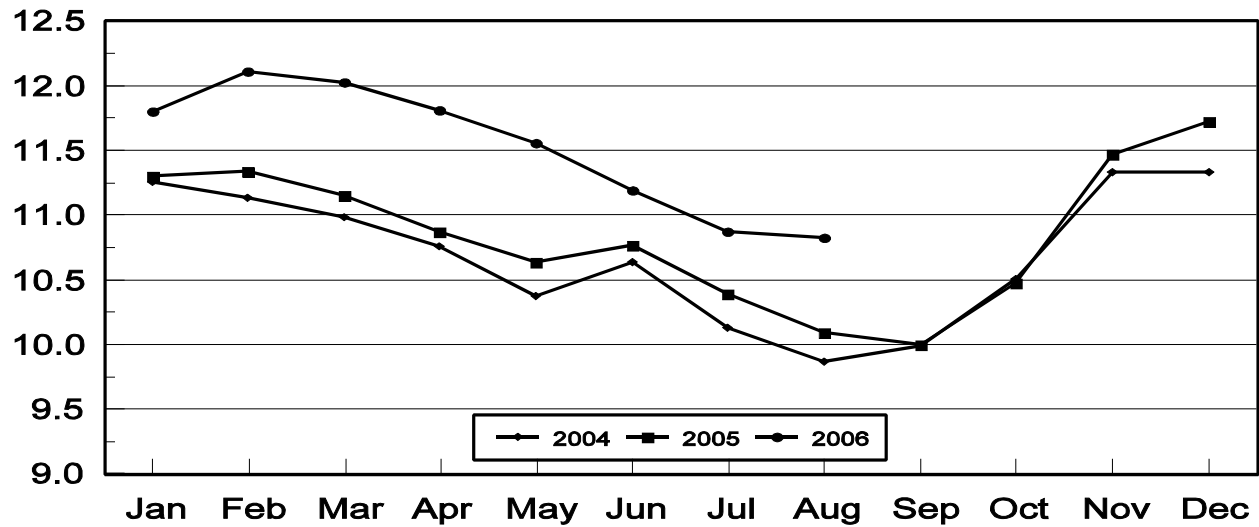
**Cattle on Feed: Number on Feed, 1,000+ Capacity Feedlots,
by Month, State, and United States 2005-2006¹**

State	Aug 1, 2005	Jul 1, 2006	Aug 1, 2006		
			Number	as % of 2005	as % of Jul
	<i>1,000 Head</i>	<i>1,000 Head</i>	<i>1,000 Head</i>	<i>Percent</i>	<i>Percent</i>
AZ	314	344	339	108	99
CA	530	530	515	97	97
CO	820	980	940	115	96
ID	250	230	225	90	98
IA	400	460	445	111	97
KS	2,190	2,280	2,360	108	104
NE	1,730	1,990	1,950	113	98
NM	134	140	144	107	103
OK	320	340	345	108	101
SD	143	180	165	115	92
TX	2,890	2,980	2,970	103	100
WA	137	148	154	112	104
Oth Sts	235	270	270	115	100
US	10,093	10,872	10,822	107	100

¹ Cattle and calves on feed are animals for slaughter market being fed a ration of grain or other concentrates and are expected to produce a carcass that will grade select or better.

**United States Cattle on Feed
1,000+ Capacity Feedlots**

Million Head



**Cattle on Feed: Number Placed on Feed, 1,000+ Capacity Feedlots,
by Month, State, and United States 2005-2006**

State	During Jul 2005	During Jun 2006	During Jul 2006		
			Number	as % of 2005	as % of Jun
	<i>1,000 Head</i>	<i>1,000 Head</i>	<i>1,000 Head</i>	<i>Percent</i>	<i>Percent</i>
AZ	29	34	31	107	91
CA	72	73	55	76	75
CO	125	*170	150	120	88
ID	36	58	36	100	62
IA	49	59	60	122	102
KS	480	445	590	123	133
NE	325	370	380	117	103
NM	23	33	23	100	70
OK	62	63	58	94	92
SD	15	29	24	160	83
TX	400	530	480	120	91
WA	26	39	33	127	85
Oth Sts	36	43	43	119	100
US	1,678	*1,946	1,963	117	101

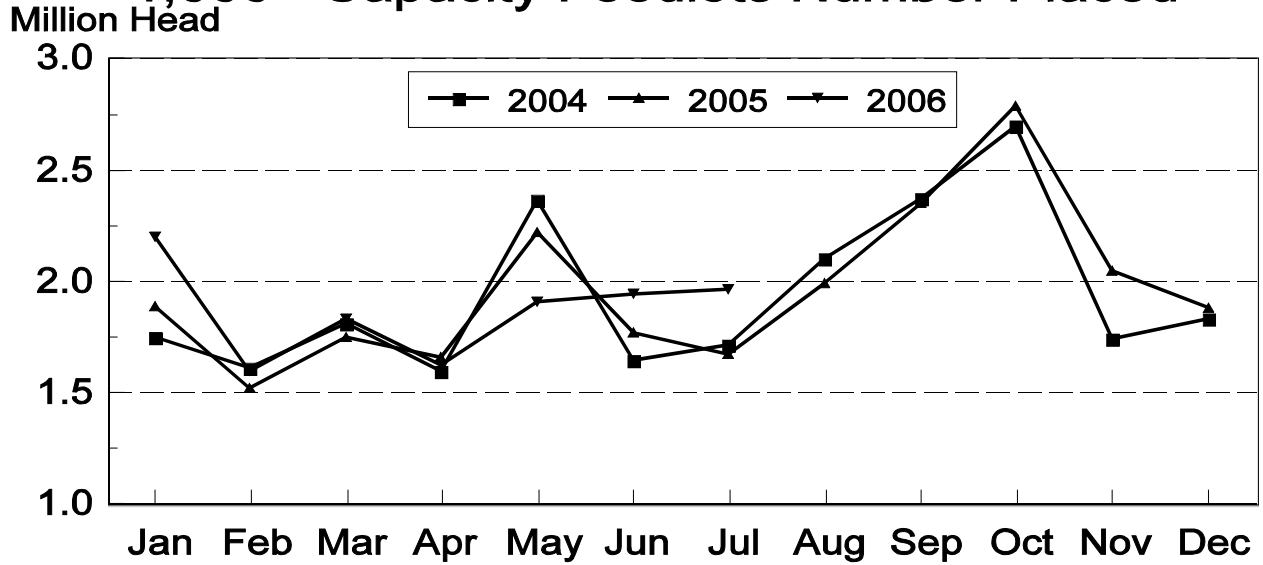
* Revised.

**Cattle on Feed: Number Placed on Feed by Weight Group, 1,000+ Capacity
Feedlots, by Month, State, and United States, 2005-2006**

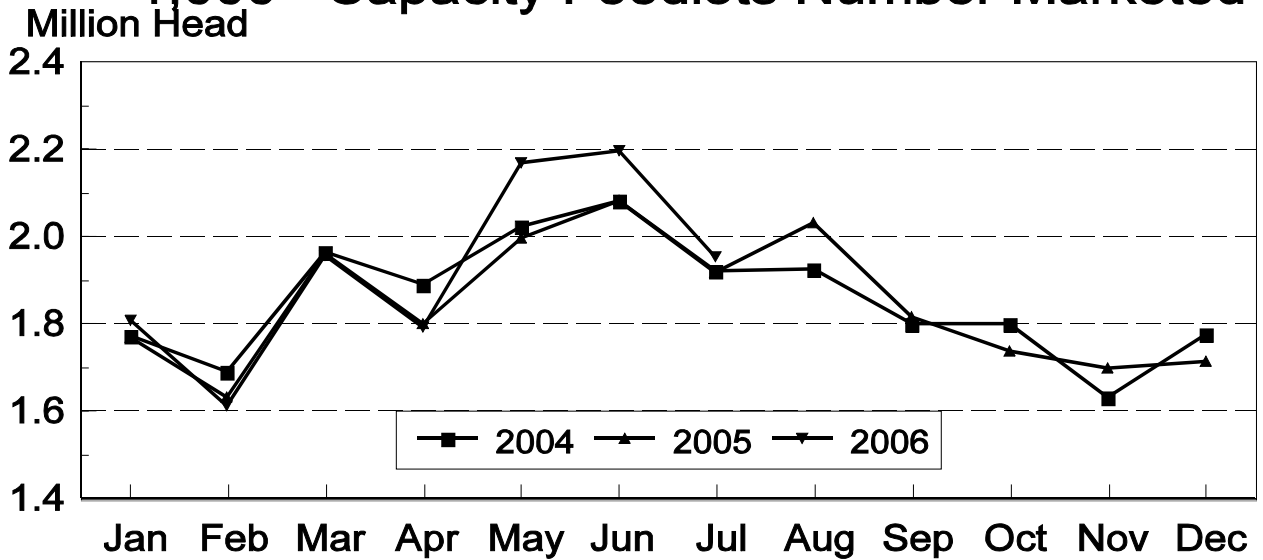
State	During July									
	Under 600		600-699		700-799		800 Plus		Total	
	2005	2006	2005	2006	2005	2006	2005	2006	2005	2006
	<i>1,000 Head</i>	<i>1,000 Head</i>	<i>1,000 Head</i>	<i>1,000 Head</i>	<i>1,000 Head</i>	<i>1,000 Head</i>	<i>1,000 Head</i>	<i>1,000 Head</i>	<i>1,000 Head</i>	<i>1,000 Head</i>
CO	20	40	20	30	45	40	40	40	125	150
KS	85	140	100	145	150	165	145	140	480	590
NE	40	60	65	65	90	100	130	155	325	380
TX	130	220	105	110	110	105	55	45	400	480
Oth Sts	125	110	48	53	70	80	105	120	348	363
US	400	570	338	403	465	490	475	500	1,678	1,963
	During June									
	Under 600		600-699		700-799		800 Plus		Total	
	2005	2006	2005	2006	2005	2006	2005	2006	2005	2006
	<i>1,000 Head</i>	<i>1,000 Head</i>	<i>1,000 Head</i>	<i>1,000 Head</i>	<i>1,000 Head</i>	<i>1,000 Head</i>	<i>1,000 Head</i>	<i>1,000 Head</i>	<i>1,000 Head</i>	<i>1,000 Head</i>
CO	25	50	25	35	40	55	40	*30	130	*170
KS	80	115	85	105	125	105	110	120	400	445
NE	52	80	38	60	75	90	125	140	290	370
TX	130	190	150	170	160	115	110	55	550	530
Oth Sts	125	130	49	60	80	91	145	150	399	431
US	412	565	347	430	480	456	530	*495	1,769	*1,946

* Revised.

United States Cattle on Feed 1,000+ Capacity Feedlots Number Placed



United States Cattle on Feed 1,000+ Capacity Feedlots Number Marketed



**Cattle on Feed: Number Marketed, 1,000+ Capacity Feedlots,
by Month, State, and United States 2005-2006**

State	During Jul 2005	During Jun 2006	During Jul 2006		
			Number	as % of 2005	as % of Jun
	<i>1,000 Head</i>	<i>1,000 Head</i>	<i>1,000 Head</i>	<i>Percent</i>	<i>Percent</i>
AZ	37	30	34	92	113
CA	59	74	67	114	91
CO	200	*210	180	90	86
ID	45	55	40	89	73
IA	63	66	73	116	111
KS	470	550	495	105	90
NE	405	490	410	101	84
NM	18	27	18	100	67
OK	61	67	52	85	78
SD	30	41	38	127	93
TX	450	500	480	107	96
WA	30	31	26	87	84
Oth Sts	50	57	42	84	74
US	1,918	*2,198	1,955	102	89

* Revised.

**Cattle on Feed: Other Disappearance, 1,000+ Capacity Feedlots,
by Month, State, and United States 2005-2006 ¹**

State	During Jul 2005	During Jun 2006	During Jul 2006		
			Number	as % of 2005	as % of Jun
	<i>1,000 Head</i>	<i>1,000 Head</i>	<i>1,000 Head</i>	<i>Percent</i>	<i>Percent</i>
AZ	2	1	2	100	200
CA	3	4	3	100	75
CO	5	10	10	200	100
ID	1	3	1	100	33
IA	1	3	2	200	67
KS	20	15	15	75	100
NE	10	10	10	100	100
NM	3	1	1	33	100
OK	1	1	1	100	100
SD	3	3	1	33	33
TX	10	10	10	100	100
WA	1	1	1	100	100
Oth Sts	1	1	1	100	100
US	61	63	58	95	92

¹ Includes death loss, movement from feedlots to pasture, and shipments to other feedlots for further feeding.

Terms and Definitions of Cattle on Feed Estimates

Cattle on feed are animals being fed a ration of grain, silage, hay and/or protein supplement for slaughter market that are expected to produce a carcass that will grade select or better. It excludes cattle being "backgrounded only" for later sale as feeders or later placement in another feedlot.

Placements are cattle put into a feedlot, fed a ration which will produce a carcass that will grade select or better, and are intended for the slaughter market.

Marketings are cattle shipped out of feedlots to a slaughter market.

Other disappearance includes death loss, movement from feedlots to pasture, and shipments to other feedlots for further feeding.

Reliability of Cattle on Feed Estimates

Survey Procedures: During January and July all known feedlots in the U.S. with capacity of 1,000 or more head are surveyed to provide data for cattle on feed estimates. During the other months, all known feedlots from 17 States are surveyed. The 17 States account for 98 percent of the cattle on feed in feedlots with capacity of 1,000 or more head.

Estimating Procedures: These cattle on feed estimates were prepared by the Agricultural Statistics Board after reviewing recommendations and analysis submitted by each State office. Regional and State survey data were reviewed for reasonableness with each other and with estimates from the previous month when setting the current estimates.

Revision Policy: Revisions to previous estimates are made to improve month to month relationships. Estimates for the previous month are subject to revision in all States each month when current estimates are made. In February, all monthly estimates for the previous year, and the number of feedlots and annual marketings from two years ago are reviewed and subject to revisions. The reviews are primarily based on slaughter data, state check-off or brand data, and any other data that may have been received after the original estimate was made. Estimates will also be reviewed after data from the Census of Agriculture are available. No revisions will be made after that date and estimates become final.

Reliability: Since all 1000+ capacity cattle on feed operators in every State are not included in the monthly survey, survey estimates are subject to sampling variability. Survey results are also subject to non-sampling errors such as omissions, duplications, and mistakes in reporting, recording, and processing the data. The effects of these errors cannot be measured directly. They are minimized through rigid quality controls in the data collection process and through a careful review of all reported data for consistency and reasonableness.

To assist users in evaluating the reliability of estimates in this report, the "**Root Mean Square Error**" is shown for selected items in the following table. The "Root Mean Square Error" is a statistical measure based on past performance and is computed using the differences between first and latest estimates. The "Root Mean Square Error" for cattle on feed inventory estimates over the past 10 years is .1 percent. This means that chances are 2 out of 3 that the final estimate will not be above or below the current estimate of 10.8 million head by more than .1 percent. Chances are 9 out of 10 that the difference will not exceed .2 percent.

The following table also shows a 10 year record of the range of differences between first and latest estimates for selected items. Using estimates of number on feed as an example, changes between the first estimate and the latest estimate during the past 10 years have averaged 8,000 head, ranging from 0

to 20,000 head. During this period the initial estimate has been below the final estimate 6 times, and above the final estimate 1 time. This does not imply that the initial estimate is likely to understate or overstate final inventory.

Reliability of U.S. August 1 Cattle on Feed Estimates ¹

Item	Root Mean Square Error	90% Confidence Level		Difference Between First and Final Estimates ¹			Number of Years	
		Percent	(000) Head	Average	Smallest	Largest	First Above Final	First Below Final
	<i>Percent</i>	<i>Percent</i>	<i>1,000 Head</i>	<i>1,000 Head</i>	<i>1,000 Head</i>	<i>1,000 Head</i>	<i>Number</i>	<i>Number</i>
Number on Feed	0.1	0.2	23.8	8	0	20	1	6
Placements	0.3	0.5	9.3	3	0	11	2	2
Marketings	0.3	0.5	10.7	2	0	20	1	1

¹ Based on data for the past 10 years.

Information Contacts

Listed below are the commodity specialists in the Livestock Branch of the National Agricultural Statistics Service to contact for additional information.

- Dan Kerestes, Chief Livestock Branch (202) 720-3570
- William Weaver, Head, Livestock Section (202) 720-3570
 - Bruce Boess - Hogs and Pigs (202) 720-3106
 - Shawn Clark - Dairy Products (202) 690-3236
 - Jason Hardegree - Milk Production and Milk Cows (202) 720-3278
 - Scott Hollis - Sheep & Lambs, Goats (202) 720-4751
 - Mike Miller - Cattle, Cattle on Feed (202) 720-3040
 - Katy Paulsen - Livestock Slaughter (515) 284-4340
 - Charmaine Wilson - Dairy Products Prices (202) 690-2168

ACCESS TO REPORTS!!

For your convenience, there are several ways to obtain NASS reports, data products, and services:

INTERNET ACCESS

All NASS reports are available free of charge on the worldwide Internet. For access, connect to the Internet and go to the NASS Home Page at: www.nass.usda.gov.

E-MAIL SUBSCRIPTION

All NASS reports are available by subscription free of charge direct to your e-mail address. Starting with the NASS Home Page at www.nass.usda.gov, under the right navigation, *Receive reports by Email*, click on **National** or **State**. Follow the instructions on the screen.

PRINTED REPORTS OR DATA PRODUCTS

CALL OUR TOLL-FREE ORDER DESK: 800-999-6779 (U.S. and Canada)
Other areas, please call 703-605-6220 FAX: 703-605-6900
(Visa, MasterCard, check, or money order acceptable for payment.)

ASSISTANCE

For **assistance** with general agricultural statistics or further information about NASS or its products or services, contact the **Agricultural Statistics Hotline** at **800-727-9540**, 7:30 a.m. to 4:00 p.m. ET, or e-mail: nass@nass.usda.gov.

The U.S. Department of Agriculture (USDA) prohibits discrimination in all its programs and activities on the basis of race, color, national origin, age, disability, and where applicable, sex, marital status, familial status, parental status, religion, sexual orientation, genetic information, political beliefs, reprisal, or because all or part of an individual's income is derived from any public assistance program. (Not all prohibited bases apply to all programs.) Persons with disabilities who require alternative means for communication of program information (Braille, large print, audiotape, etc.) should contact USDA's TARGET Center at (202) 720-2600 (voice and TDD).

To file a complaint of discrimination, write to USDA, Director, Office of Civil Rights, 1400 Independence Avenue, S.W., Washington, D.C. 20250-9410, or call (800) 795-3272 (voice) or (202) 720-6382 (TDD). USDA is an equal opportunity provider and employer.