



NASS

FACT FINDERS FOR AGRICULTURE
UNITED STATES DEPARTMENT OF AGRICULTURE

Washington, D.C.

Cattle On Feed

Released September 22, 2006, by the National Agricultural Statistics Service (NASS), Agricultural Statistics Board, U.S. Department of Agriculture. For information on *Cattle on Feed* call Mike Miller at (202) 720-3040, office hours 7:30 a.m. to 4:00 p.m. ET.

U.S. Cattle on Feed Up 10 Percent

Cattle and calves on feed for slaughter market in the United States for feedlots with capacity of 1,000 or more head totaled 11.0 million head on September 1, 2006. The inventory was 10 percent above September 1, 2005 and 10 percent above September 1, 2004. This is the highest September 1 inventory since the series began in 1996.

Placements in feedlots during August totaled 2.30 million, 15 percent above 2005 and 9 percent above 2004. Net placements were 2.24 million. During August, placements of cattle and calves weighing less than 600 pounds were 680,000, 600-699 pounds were 435,000, 700-799 pounds were 535,000, and 800 pounds and greater were 650,000.

Marketings of fed cattle during August totaled 2.08 million, 2 percent above 2005 and 8 percent above 2004.

Other disappearance totaled 59,000 during August, 11 percent above 2005 and 5 percent above 2004.

**Cattle on Feed: Number on Feed, Placements, Marketings, and
Other Disappearance, 1,000+ Capacity Feedlots,
United States, September 1, 2004-2006**

Item	Number			2006 as % of	
	2004	2005	2006	2004	2005
	<i>1,000 Head</i>	<i>1,000 Head</i>	<i>1,000 Head</i>	<i>Percent</i>	<i>Percent</i>
On Feed Aug 1 ¹	9,868	10,093	10,822	110	107
Placed on Feed During Aug	2,102	1,993	2,300	109	115
Fed Cattle Marketed During Aug	1,926	2,033	2,077	108	102
Other Disappearance During Aug ²	56	53	59	105	111
On Feed Sep 1 ¹	9,988	10,000	10,986	110	110

¹ Cattle and calves on feed are animals for slaughter market being fed a ration of grain or other concentrates and are expected to produce a carcass that will grade select or better.

² Includes death loss, movement from feedlots to pasture, and shipments to other feedlots for further feeding.

**Cattle on Feed: Number on Feed, Placements, Marketings, and
Other Disappearance, 1,000+ Capacity Feedlots,
United States, August 1, 2004-2006**

Item	Number			2006 as % of	
	2004	2005	2006	2004	2005
	<i>1,000 Head</i>	<i>1,000 Head</i>	<i>1,000 Head</i>	<i>Percent</i>	<i>Percent</i>
On Feed Jul 1 ¹	10,132	10,394	10,872	107	105
Placed on Feed During Jul	1,719	1,678	1,963	114	117
Fed Cattle Marketed During Jul	1,925	1,918	1,955	102	102
Other Disappearance During Jul ²	58	61	58	100	95
On Feed Aug 1 ¹	9,868	10,093	10,822	110	107

¹ Cattle and calves on feed are animals for slaughter market being fed a ration of grain or other concentrates and are expected to produce a carcass that will grade select or better.

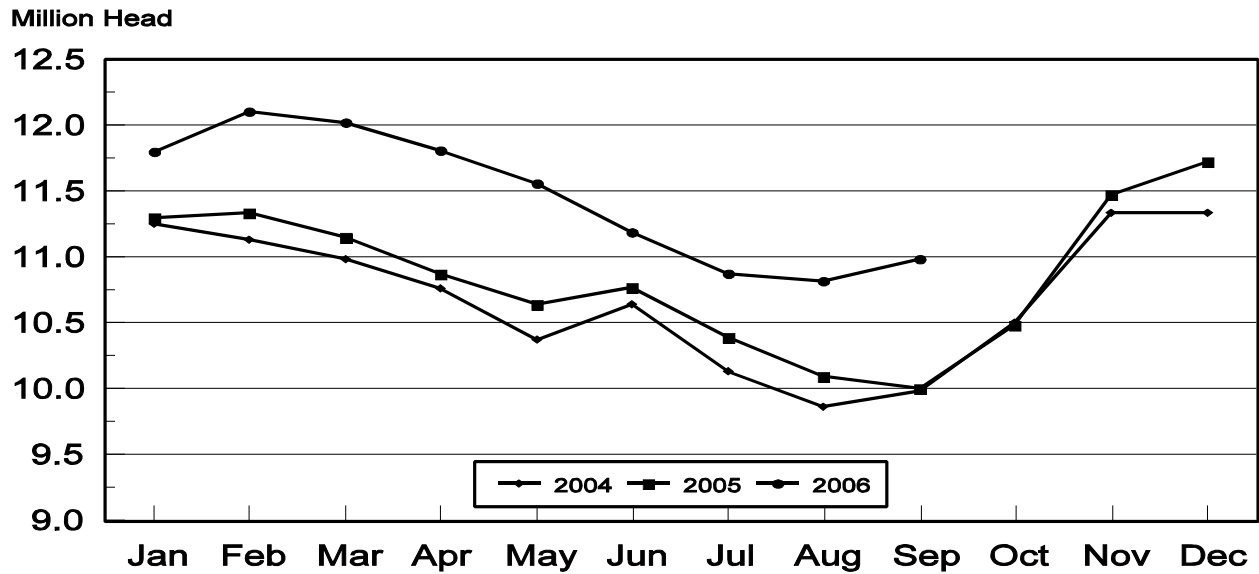
² Includes death loss, movement from feedlots to pasture, and shipments to other feedlots for further feeding.

**Cattle on Feed: Number on Feed, 1,000+ Capacity Feedlots,
by Month, State, and United States 2005-2006 ¹**

State	Sep 1, 2005	Aug 1, 2006	Sep 1, 2006		
			Number	as % of 2005	as % of Aug
	<i>1,000 Head</i>	<i>1,000 Head</i>	<i>1,000 Head</i>	<i>Percent</i>	<i>Percent</i>
AZ	314	339	336	107	99
CA	530	515	520	98	101
CO	770	940	960	125	102
ID	250	225	235	94	104
IA	395	445	455	115	102
KS	2,210	2,360	2,390	108	101
NE	1,770	1,950	2,050	116	105
NM	135	144	142	105	99
OK	320	345	345	108	100
SD	132	165	155	117	94
TX	2,800	2,970	2,960	106	100
WA	139	154	158	114	103
Oth Sts	235	270	280	119	104
US	10,000	10,822	10,986	110	102

¹ Cattle and calves on feed are animals for slaughter market being fed a ration of grain or other concentrates and are expected to produce a carcass that will grade select or better.

**United States Cattle on Feed
1,000+ Capacity Feedlots**

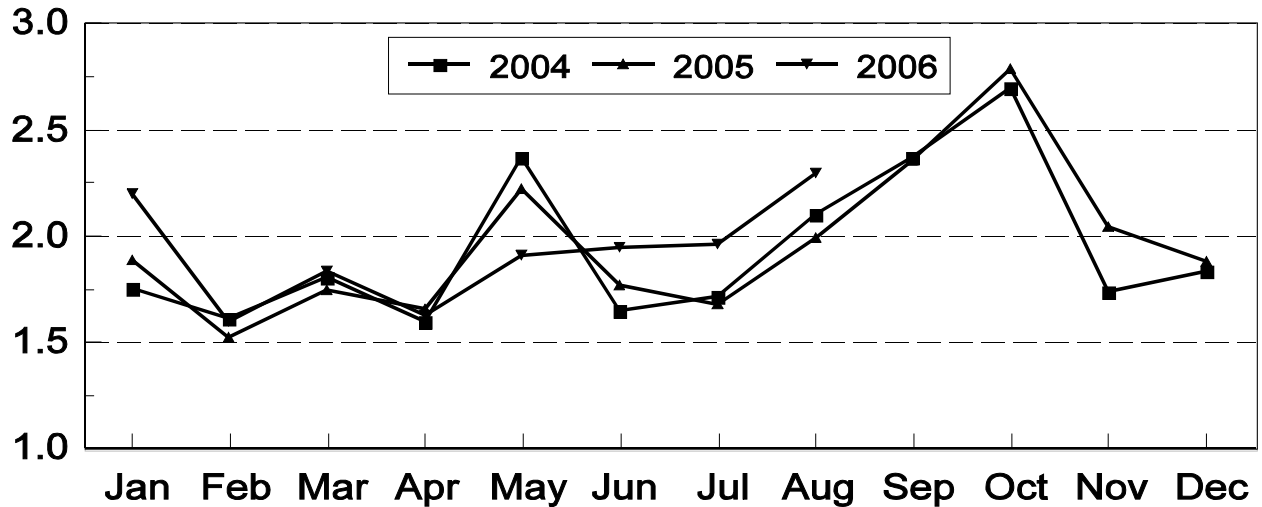


**Cattle on Feed: Number Placed on Feed, 1,000+ Capacity Feedlots,
by Month, State, and United States 2005-2006**

State	During Aug 2005	During Jul 2006	During Aug 2006		
			Number	as % of 2005	as % of Jul
	<i>1,000 Head</i>	<i>1,000 Head</i>	<i>1,000 Head</i>	<i>Percent</i>	<i>Percent</i>
AZ	35	31	30	86	97
CA	62	55	66	106	120
CO	155	150	210	135	140
ID	51	36	55	108	153
IA	69	60	80	116	133
KS	520	590	590	113	100
NE	415	380	470	113	124
NM	28	23	26	93	113
OK	70	58	77	110	133
SD	24	24	30	125	125
TX	480	480	570	119	119
WA	30	33	35	117	106
Oth Sts	54	43	61	113	142
US	1,993	1,963	2,300	115	117

**United States Cattle on Feed
1,000+ Capacity Feedlots Number Placed**

Million Head



**Cattle on Feed: Number Placed on Feed by Weight Group, 1,000+ Capacity
Feedlots, by Month, State, and United States, 2005-2006**

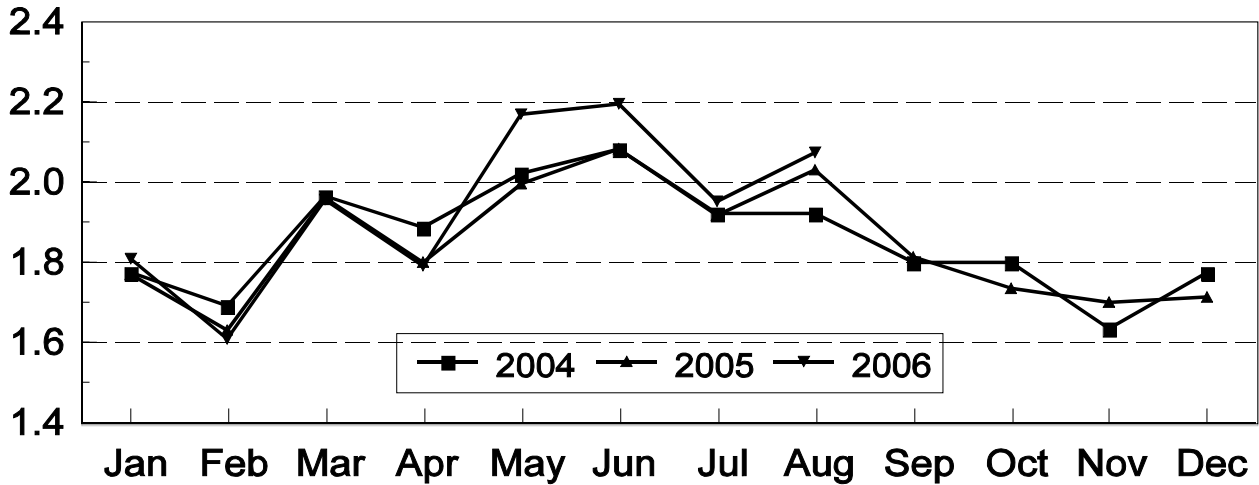
State	During August									
	Under 600		600-699		700-799		800 Plus		Total	
	2005	2006	2005	2006	2005	2006	2005	2006	2005	2006
	<i>1,000 Head</i>	<i>1,000 Head</i>	<i>1,000 Head</i>	<i>1,000 Head</i>	<i>1,000 Head</i>	<i>1,000 Head</i>	<i>1,000 Head</i>	<i>1,000 Head</i>	<i>1,000 Head</i>	<i>1,000 Head</i>
CO	20	50	25	30	40	50	70	80	155	210
KS	85	140	105	120	165	185	165	145	520	590
NE	43	80	65	75	112	115	195	200	415	470
TX	140	280	130	140	135	95	75	55	480	570
Oth Sts	130	130	60	70	88	90	145	170	423	460
US	418	680	385	435	540	535	650	650	1,993	2,300
	During July									
	Under 600		600-699		700-799		800 Plus		Total	
	2005	2006	2005	2006	2005	2006	2005	2006	2005	2006
	<i>1,000 Head</i>	<i>1,000 Head</i>	<i>1,000 Head</i>	<i>1,000 Head</i>	<i>1,000 Head</i>	<i>1,000 Head</i>	<i>1,000 Head</i>	<i>1,000 Head</i>	<i>1,000 Head</i>	<i>1,000 Head</i>
CO	20	40	20	30	45	40	40	40	125	150
KS	85	140	100	145	150	165	145	140	480	590
NE	40	60	65	65	90	100	130	155	325	380
TX	130	220	105	110	110	105	55	45	400	480
Oth Sts	125	110	48	53	70	80	105	120	348	363
US	400	570	338	403	465	490	475	500	1,678	1,963

**Cattle on Feed: Number Marketed, 1,000+ Capacity Feedlots,
by Month, State, and United States 2005-2006**

State	During Aug 2005	During Jul 2006	During Aug 2006		
			Number	as % of 2005	as % of Jul
			<i>1,000 Head</i>	<i>Percent</i>	<i>Percent</i>
AZ	34	34	31	91	91
CA	57	67	59	104	88
CO	200	180	185	93	103
ID	50	40	44	88	110
IA	72	73	69	96	95
KS	490	495	540	110	109
NE	365	410	360	99	88
NM	24	18	26	108	144
OK	68	52	76	112	146
SD	34	38	37	109	97
TX	560	480	570	102	119
WA	27	26	30	111	115
Oth Sts	52	42	50	96	119
US	2,033	1,955	2,077	102	106

United States Cattle on Feed 1,000+ Capacity Feedlots Number Marketed

Million Head



**Cattle on Feed: Other Disappearance, 1,000+ Capacity Feedlots,
by Month, State, and United States 2005-2006¹**

State	During Aug 2005	During Jul 2006	During Aug 2006		
			Number	as % of 2005	as % of Jul
	<i>1,000 Head</i>	<i>1,000 Head</i>	<i>1,000 Head</i>	<i>Percent</i>	<i>Percent</i>
AZ	1	2	2	200	100
CA	5	3	2	40	67
CO	5	10	5	100	50
ID	1	1	1	100	100
IA	2	2	1	50	50
KS	10	15	20	200	133
NE	10	10	10	100	100
NM	3	1	2	67	200
OK	2	1	1	50	100
SD	1	1	3	300	300
TX	10	10	10	100	100
WA	1	1	1	100	100
Oth Sts	2	1	1	50	100
US	53	58	59	111	102

¹ Includes death loss, movement from feedlots to pasture, and shipments to other feedlots for further feeding.

Terms and Definitions of Cattle on Feed Estimates

Cattle on feed are animals being fed a ration of grain, silage, hay and/or protein supplement for slaughter market that are expected to produce a carcass that will grade select or better. It excludes cattle being "backgrounded only" for later sale as feeders or later placement in another feedlot.

Placements are cattle put into a feedlot, fed a ration which will produce a carcass that will grade select or better, and are intended for the slaughter market.

Marketings are cattle shipped out of feedlots to a slaughter market.

Other disappearance includes death loss, movement from feedlots to pasture, and shipments to other feedlots for further feeding.

Reliability of Cattle on Feed Estimates

Survey Procedures: During January and July all known feedlots in the U.S. with capacity of 1,000 or more head are surveyed to provide data for cattle on feed estimates. During the other months, all known feedlots from 17 States are surveyed. The 17 States account for 98 percent of the cattle on feed in feedlots with capacity of 1,000 or more head.

Estimating Procedures: These cattle on feed estimates were prepared by the Agricultural Statistics Board after reviewing recommendations and analysis submitted by each State office. Regional and State survey data were reviewed for reasonableness with each other and with estimates from the previous month when setting the current estimates.

Revision Policy: Revisions to previous estimates are made to improve month to month relationships. Estimates for the previous month are subject to revision in all States each month when current estimates are made. In February, all monthly estimates for the previous year, and the number of feedlots and annual marketings from two years ago are reviewed and subject to revisions. The reviews are primarily based on slaughter data, state check-off or brand data, and any other data that may have been received after the original estimate was made. Estimates will also be reviewed after data from the Census of Agriculture are available. No revisions will be made after that date and estimates become final.

Reliability: Since all 1000+ capacity cattle on feed operators in every State are not included in the monthly survey, survey estimates are subject to sampling variability. Survey results are also subject to non-sampling errors such as omissions, duplications, and mistakes in reporting, recording, and processing the data. The effects of these errors cannot be measured directly. They are minimized through rigid quality controls in the data collection process and through a careful review of all reported data for consistency and reasonableness.

To assist users in evaluating the reliability of estimates in this report, the "**Root Mean Square Error**" is shown for selected items in the following table. The "Root Mean Square Error" is a statistical measure based on past performance and is computed using the differences between first and latest estimates. The "Root Mean Square Error" for cattle on feed inventory estimates over the past 10 years is .1 percent. This means that chances are 2 out of 3 that the final estimate will not be above or below the current estimate of 11.0 million head by more than .1 percent. Chances are 9 out of 10 that the difference will not exceed .3 percent.

The following table also shows a 10 year record of the range of differences between first and latest estimates for selected items. Using estimates of number on feed as an example, changes between the first estimate and the latest estimate during the past 10 years have averaged 11,000 head, ranging from 0

to 30,000 head. During this period the initial estimate has been below the final estimate 5 times, and above the final estimate 2 times. This does not imply that the initial estimate is likely to understate or overstate final inventory.

Reliability of U.S. September 1 Cattle on Feed Estimates ¹

Item	Root Mean Square Error	90% Confidence Level		Difference Between First and Final Estimates ¹			Number of Years	
		Percent	(000) Head	Average	Smallest	Largest	First Above Final	First Below Final
	<i>Percent</i>	<i>Percent</i>	<i>1,000 Head</i>	<i>1,000 Head</i>	<i>1,000 Head</i>	<i>1,000 Head</i>	<i>Number</i>	<i>Number</i>
Number on Feed	0.1	0.3	29.4	11	0	30	2	5
Placements	0.6	1.0	23.8	7	0	32	0	5
Marketings	0.4	0.8	17.1	6	0	20	0	6

¹ Based on data for the past 10 years.

Information Contacts

Listed below are the commodity specialists in the Livestock Branch of the National Agricultural Statistics Service to contact for additional information.

- Dan Kerestes, Chief Livestock Branch (202) 720-3570
- William Weaver, Head, Livestock Section (202) 720-3570
 - Bruce Boess - Hogs and Pigs (202) 720-3106
 - Shawn Clark - Dairy Products (202) 690-3236
 - Jason Hardegree - Milk Production and Milk Cows (202) 720-3278
 - Scott Hollis - Sheep & Lambs, Goats (202) 720-4751
 - Mike Miller - Cattle, Cattle on Feed (202) 720-3040
 - Katy Paulsen - Livestock Slaughter (515) 284-4340
 - Charmaine Wilson - Dairy Products Prices (202) 690-2168

ACCESS TO REPORTS!!

For your convenience, there are several ways to obtain NASS reports, data products, and services:

INTERNET ACCESS

All NASS reports are available free of charge on the worldwide Internet. For access, connect to the Internet and go to the NASS Home Page at: www.nass.usda.gov.

E-MAIL SUBSCRIPTION

All NASS reports are available by subscription free of charge direct to your e-mail address. Starting with the NASS Home Page at www.nass.usda.gov, under the right navigation, *Receive reports by Email*, click on **National** or **State**. Follow the instructions on the screen.

PRINTED REPORTS OR DATA PRODUCTS

CALL OUR TOLL-FREE ORDER DESK: 800-999-6779 (U.S. and Canada)
Other areas, please call 703-605-6220 FAX: 703-605-6900
(Visa, MasterCard, check, or money order acceptable for payment.)

ASSISTANCE

For **assistance** with general agricultural statistics or further information about NASS or its products or services, contact the **Agricultural Statistics Hotline** at **800-727-9540**, 7:30 a.m. to 4:00 p.m. ET, or e-mail: nass@nass.usda.gov.

The U.S. Department of Agriculture (USDA) prohibits discrimination in all its programs and activities on the basis of race, color, national origin, age, disability, and where applicable, sex, marital status, familial status, parental status, religion, sexual orientation, genetic information, political beliefs, reprisal, or because all or part of an individual's income is derived from any public assistance program. (Not all prohibited bases apply to all programs.) Persons with disabilities who require alternative means for communication of program information (Braille, large print, audiotape, etc.) should contact USDA's TARGET Center at (202) 720-2600 (voice and TDD).

To file a complaint of discrimination, write to USDA, Director, Office of Civil Rights, 1400 Independence Avenue, S.W., Washington, D.C. 20250-9410, or call (800) 795-3272 (voice) or (202) 720-6382 (TDD). USDA is an equal opportunity provider and employer.