



NASS

FACT FINDERS FOR AGRICULTURE
UNITED STATES DEPARTMENT OF AGRICULTURE

Washington, D.C.

Cattle On Feed

Released December 22, 2006, by the National Agricultural Statistics Service (NASS), Agricultural Statistics Board, U.S. Department of Agriculture. For information on *Cattle on Feed* call Mike Miller at (202) 720-3040, office hours 7:30 a.m. to 4:00 p.m. ET.

U.S. Cattle on Feed Up 2 Percent

Cattle and calves on feed for slaughter market in the United States for feedlots with capacity of 1,000 or more head totaled 12.0 million head on December 1, 2006. The inventory was 2 percent above December 1, 2005 and 6 percent above December 1, 2004. This is the highest December 1 inventory since the series began in 1996.

Placements in feedlots during November totaled 1.89 million, 8 percent below 2005 but 8 percent above 2004. Net placements were 1.81 million. This is the second lowest placements for the month of November since the series began in 1996. During November, placements of cattle and calves weighing less than 600 pounds were 555,000, 600-699 pounds were 565,000, 700-799 pounds were 404,000, and 800 pounds and greater were 365,000.

Marketings of fed cattle during November totaled 1.80 million, 6 percent above 2005 and 10 percent above 2004. This is the second highest fed cattle marketings for the month of November since the series began in 1996.

Other disappearance totaled 83,000 during November, 9 percent below 2005 and 23 percent below 2004.

**Cattle on Feed: Number on Feed, Placements, Marketings, and
Other Disappearance, 1,000+ Capacity Feedlots,
United States, December 1, 2004-2006**

Item	Number			2006 as % of	
	2004	2005	2006	2004	2005
	<i>1,000 Head</i>	<i>1,000 Head</i>	<i>1,000 Head</i>	<i>Percent</i>	<i>Percent</i>
On Feed Nov 1 ¹	11,334	11,473	*11,969	106	104
Placed on Feed During Nov	1,743	2,045	1,889	108	92
Fed Cattle Marketed During Nov	1,635	1,701	1,802	110	106
Other Disappearance During Nov ²	108	91	83	77	91
On Feed Dec 1 ¹	11,334	11,726	11,973	106	102

* Revised.

¹ Cattle and calves on feed are animals for slaughter market being fed a ration of grain or other concentrates and are expected to produce a carcass that will grade select or better.

² Includes death loss, movement from feedlots to pasture, and shipments to other feedlots for further feeding.

**Cattle on Feed: Number on Feed, Placements, Marketings, and
Other Disappearance, 1,000+ Capacity Feedlots,
United States, November 1, 2004-2006**

Item	Number			2006 as % of	
	2004	2005	2006	2004	2005
	<i>1,000 Head</i>	<i>1,000 Head</i>	<i>1,000 Head</i>	<i>Percent</i>	<i>Percent</i>
On Feed Oct 1 ¹	10,502	10,482	11,385	108	109
Placed on Feed During Oct	2,701	2,788	*2,430	90	87
Fed Cattle Marketed During Oct	1,803	1,739	*1,765	98	101
Other Disappearance During Oct ²	66	58	81	123	140
On Feed Nov 1 ¹	11,334	11,473	*11,969	106	104

* Revised.

¹ Cattle and calves on feed are animals for slaughter market being fed a ration of grain or other concentrates and are expected to produce a carcass that will grade select or better.

² Includes death loss, movement from feedlots to pasture, and shipments to other feedlots for further feeding.

**Cattle on Feed: Number on Feed, 1,000+ Capacity Feedlots,
by Month, State, and United States 2005-2006 ¹**

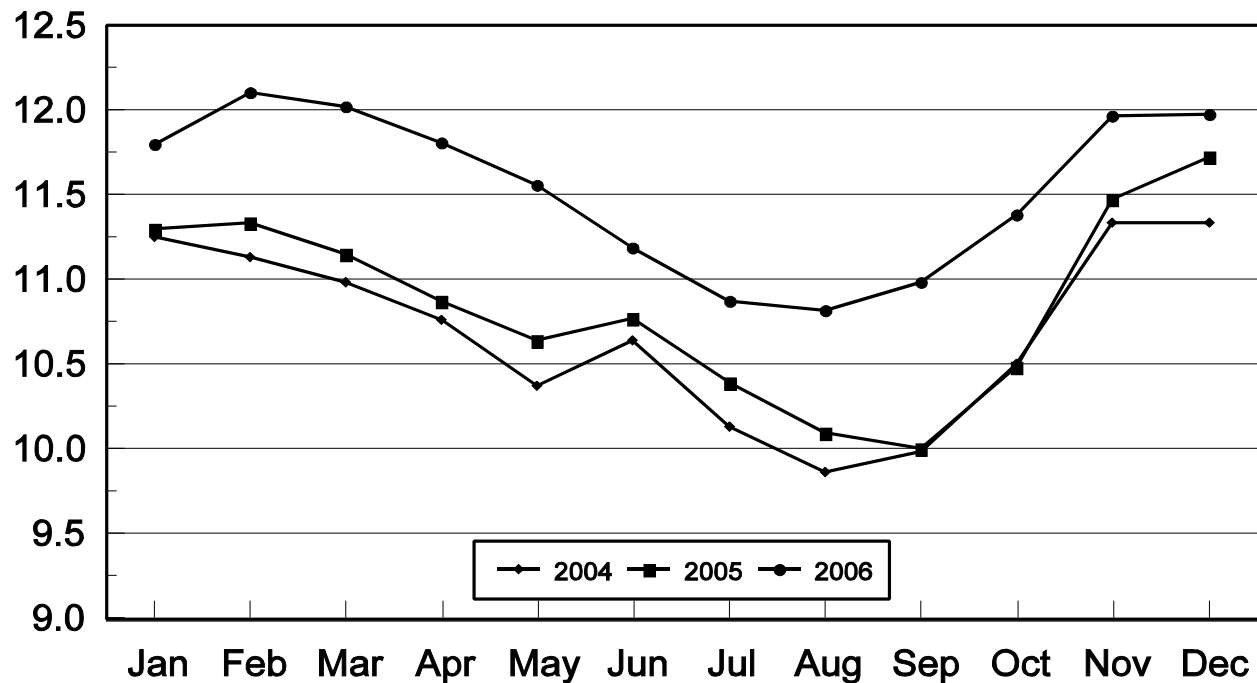
State	Dec 1, 2005	Nov 1, 2006	Dec 1, 2006		
			Number	as % of 2005	as % of Nov
	<i>1,000 Head</i>	<i>1,000 Head</i>	<i>1,000 Head</i>	<i>Percent</i>	<i>Percent</i>
AZ	328	342	341	104	100
CA	550	530	540	98	102
CO	1,070	*1,130	1,120	105	99
ID	280	285	270	96	95
IA	500	490	500	100	102
KS	2,470	2,550	2,550	103	100
NE	2,400	2,440	2,510	105	103
NM	137	141	137	100	97
OK	365	360	350	96	97
SD	190	190	210	111	111
TX	2,940	2,990	2,900	99	97
WA	161	181	185	115	102
Oth Sts	335	340	360	107	106
US	11,726	*11,969	11,973	102	100

* Revised.

¹ Cattle and calves on feed are animals for slaughter market being fed a ration of grain or other concentrates and are expected to produce a carcass that will grade select or better.

United States Cattle on Feed 1,000+ Capacity Feedlots

Million Head



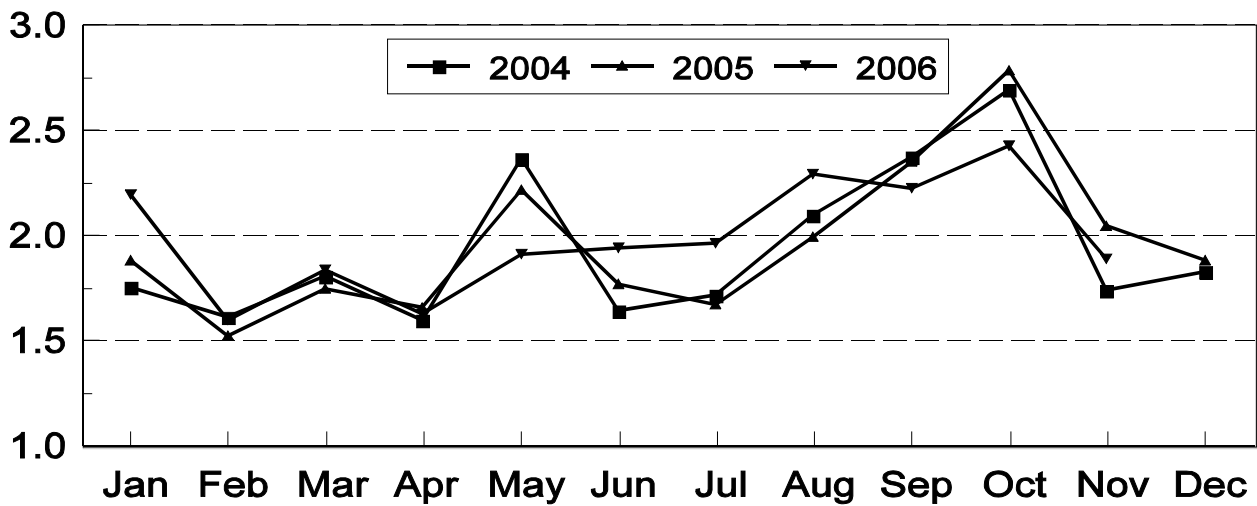
**Cattle on Feed: Number Placed on Feed, 1,000+ Capacity Feedlots,
by Month, State, and United States 2005-2006**

State	During Nov 2005	During Oct 2006	During Nov 2006		
			Number	as % of 2005	as % of Oct
	<i>1,000 Head</i>	<i>1,000 Head</i>	<i>1,000 Head</i>	<i>Percent</i>	<i>Percent</i>
AZ	35	34	30	86	88
CA	66	71	69	105	97
CO	165	*215	150	91	70
ID	49	71	43	88	61
IA	108	109	82	76	75
KS	465	520	405	87	78
NE	440	560	460	105	82
NM	18	14	14	78	100
OK	68	65	50	74	77
SD	63	64	56	89	88
TX	495	590	435	88	74
WA	27	34	31	115	91
Oth Sts	46	83	64	139	77
US	2,045	*2,430	1,889	92	78

* Revised.

United States Cattle on Feed 1,000+ Capacity Feedlots Number Placed

Million Head



**Cattle on Feed: Number Placed on Feed by Weight Group, 1,000+ Capacity
Feedlots, by Month, State, and United States, 2005-2006**

State	During November									
	Under 600		600-699		700-799		800 Plus		Total	
	2005	2006	2005	2006	2005	2006	2005	2006	2005	2006
	<i>1,000 Head</i>	<i>1,000 Head</i>	<i>1,000 Head</i>	<i>1,000 Head</i>	<i>1,000 Head</i>	<i>1,000 Head</i>	<i>1,000 Head</i>	<i>1,000 Head</i>	<i>1,000 Head</i>	<i>1,000 Head</i>
CO	45	45	60	45	35	30	25	30	165	150
KS	155	110	145	115	100	105	65	75	465	405
NE	120	100	145	165	85	95	90	100	440	460
TX	160	145	170	130	120	100	45	60	495	435
Oth Sts	180	155	130	110	80	74	90	100	480	439
US	660	555	650	565	420	404	315	365	2,045	1,889
	During October									
	Under 600		600-699		700-799		800 Plus		Total	
	2005	2006	2005	2006	2005	2006	2005	2006	2005	2006
	<i>1,000 Head</i>	<i>1,000 Head</i>	<i>1,000 Head</i>	<i>1,000 Head</i>	<i>1,000 Head</i>	<i>1,000 Head</i>	<i>1,000 Head</i>	<i>1,000 Head</i>	<i>1,000 Head</i>	<i>1,000 Head</i>
CO	75	55	65	*55	60	45	85	60	285	*215
KS	170	180	175	120	130	125	105	95	580	520
NE	220	175	200	175	120	95	120	115	660	560
TX	185	210	205	185	200	135	80	60	670	590
Oth Sts	230	220	145	115	83	85	135	125	593	545
US	880	840	790	*650	593	485	525	455	2,788	*2,430

* Revised.

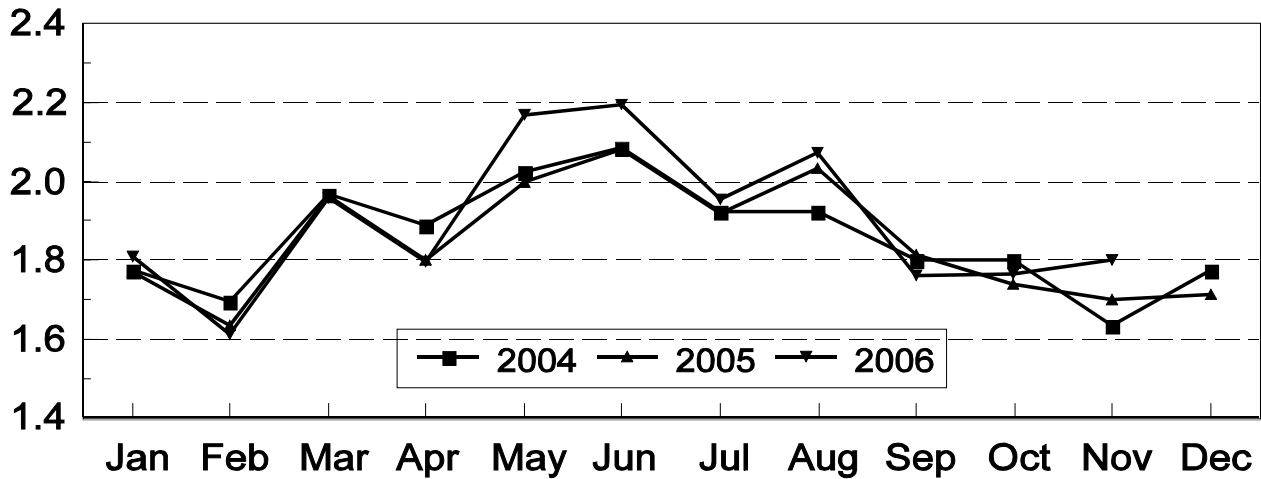
**Cattle on Feed: Number Marketed, 1,000+ Capacity Feedlots,
by Month, State, and United States 2005-2006**

State	During Nov 2005	During Oct 2006	During Nov 2006		
			Number	as % of 2005	as % of Oct
	<i>1,000 Head</i>	<i>1,000 Head</i>	<i>1,000 Head</i>	<i>Percent</i>	<i>Percent</i>
AZ	29	27	29	100	107
CA	53	62	55	104	89
CO	115	*135	150	130	111
ID	57	50	56	98	112
IA	80	78	70	88	90
KS	375	395	385	103	97
NE	305	330	380	125	115
NM	20	13	16	80	123
OK	62	58	57	92	98
SD	33	43	35	106	81
TX	510	510	500	98	98
WA	28	23	26	93	113
Oth Sts	34	41	43	126	105
US	1,701	*1,765	1,802	106	102

* Revised.

United States Cattle on Feed 1,000+ Capacity Feedlots Number Marketed

Million Head



**Cattle on Feed: Other Disappearance, 1,000+ Capacity Feedlots,
by Month, State, and United States 2005-2006 ¹**

State	During Nov 2005	During Oct 2006	During Nov 2006		
			Number	as % of 2005	as % of Oct
	<i>1,000 Head</i>	<i>1,000 Head</i>	<i>1,000 Head</i>	<i>Percent</i>	<i>Percent</i>
AZ	1	1	2	200	200
CA	8	4	4	50	100
CO	10	10	10	100	100
ID	2	1	2	100	200
IA	3	1	2	67	200
KS	30	25	20	67	80
NE	15	10	10	67	100
NM	2	3	2	100	67
OK	1	2	3	300	150
SD	1	1	1	100	100
TX	15	20	25	167	125
WA	1	1	1	100	100
Oth Sts	2	2	1	50	50
US	91	81	83	91	102

¹ Includes death loss, movement from feedlots to pasture, and shipments to other feedlots for further feeding.

Terms and Definitions of Cattle on Feed Estimates

Cattle on feed are animals being fed a ration of grain, silage, hay and/or protein supplement for slaughter market that are expected to produce a carcass that will grade select or better. It excludes cattle being "backgrounded only" for later sale as feeders or later placement in another feedlot.

Placements are cattle put into a feedlot, fed a ration which will produce a carcass that will grade select or better, and are intended for the slaughter market.

Marketings are cattle shipped out of feedlots to a slaughter market.

Other disappearance includes death loss, movement from feedlots to pasture, and shipments to other feedlots for further feeding.

Reliability of Cattle on Feed Estimates

Survey Procedures: During January and July all known feedlots in the U.S. with capacity of 1,000 or more head are surveyed to provide data for cattle on feed estimates. During the other months, all known feedlots from 17 States are surveyed. The 17 States account for 98 percent of the cattle on feed in feedlots with capacity of 1,000 or more head.

Estimating Procedures: These cattle on feed estimates were prepared by the Agricultural Statistics Board after reviewing recommendations and analysis submitted by each State office. Regional and State survey data were reviewed for reasonableness with each other and with estimates from the previous month when setting the current estimates.

Revision Policy: Revisions to previous estimates are made to improve month to month relationships. Estimates for the previous month are subject to revision in all States each month when current estimates are made. In February, all monthly estimates for the previous year, and the number of feedlots and annual marketings from two years ago are reviewed and subject to revisions. The reviews are primarily based on slaughter data, state check-off or brand data, and any other data that may have been received after the original estimate was made. Estimates will also be reviewed after data from the Census of Agriculture are available. No revisions will be made after that date and estimates become final.

Reliability: Since all 1,000+ capacity cattle on feed operators in every State are not included in the monthly survey, survey estimates are subject to sampling variability. Survey results are also subject to non-sampling errors such as omissions, duplications, and mistakes in reporting, recording, and processing the data. The effects of these errors cannot be measured directly. They are minimized through rigid quality controls in the data collection process and through a careful review of all reported data for consistency and reasonableness.

To assist users in evaluating the reliability of estimates in this report, the "**Root Mean Square Error**" is shown for selected items in the following table. The "Root Mean Square Error" is a statistical measure based on past performance and is computed using the differences between first and latest estimates. The "Root Mean Square Error" for cattle on feed inventory estimates over the past 10 years is .2 percent. This means that chances are 2 out of 3 that the final estimate will not be above or below the current estimate of 12.0 million head by more than .2 percent. Chances are 9 out of 10 that the difference will not exceed .4 percent.

The following table also shows a 10 year record of the range of differences between first and latest estimates for selected items. Using estimates of number on feed as an example, changes between the first estimate and the latest estimate during the past 10 years have averaged 15,000 head, ranging from 0

to 48,000 head. During this period the initial estimate has been below the final estimate 5 times, and above the final estimate 1 time. This does not imply that the initial estimate is likely to understate or overstate final inventory.

Reliability of U.S. December 1 Cattle on Feed Estimates ¹

Item	Root Mean Square Error	90% Confidence Level		Difference Between First and Final Estimates ¹			Number of Years	
		Percent	(000) Head	Average	Smallest	Largest	First Above Final	First Below Final
	<i>Percent</i>	<i>Percent</i>	<i>1,000 Head</i>	<i>1,000 Head</i>	<i>1,000 Head</i>	<i>1,000 Head</i>	<i>Number</i>	<i>Number</i>
Number on Feed	0.2	0.4	45.3	15	0	48	1	5
Placements	0.3	0.6	10.6	3	0	15	0	3
Marketings	0.5	0.8	15.0	4	0	20	1	3

¹ Based on data for the past 10 years.

Information Contacts

Listed below are the commodity specialists in the Livestock Branch of the National Agricultural Statistics Service to contact for additional information.

- Dan Kerestes, Chief Livestock Branch (202) 720-3570
- William Weaver, Head, Livestock Section (202) 720-3570
 - Bruce Boess - Hogs and Pigs (202) 720-3106
 - Shawn Clark - Dairy Products (202) 690-3236
 - Jason Hardegree - Milk Production and Milk Cows (202) 720-3278
 - Scott Hollis - Sheep & Lambs, Goats (202) 720-4751
 - Mike Miller - Cattle, Cattle on Feed (202) 720-3040
 - Katy Paulsen - Livestock Slaughter (515) 284-4340
 - Charmaine Wilson - Dairy Products Prices (202) 690-2168

ACCESS TO REPORTS!!

For your convenience, there are several ways to obtain NASS reports, data products, and services:

INTERNET ACCESS

All NASS reports are available free of charge on the worldwide Internet. For access, connect to the Internet and go to the NASS Home Page at: www.nass.usda.gov.

E-MAIL SUBSCRIPTION

All NASS reports are available by subscription free of charge direct to your e-mail address. Starting with the NASS Home Page at www.nass.usda.gov, under the right navigation, *Receive reports by Email*, click on **National** or **State**. Follow the instructions on the screen.

PRINTED REPORTS OR DATA PRODUCTS

CALL OUR TOLL-FREE ORDER DESK: 800-999-6779 (U.S. and Canada)
Other areas, please call 703-605-6220 FAX: 703-605-6900
(Visa, MasterCard, check, or money order acceptable for payment.)

ASSISTANCE

For **assistance** with general agricultural statistics or further information about NASS or its products or services, contact the **Agricultural Statistics Hotline** at **800-727-9540**, 7:30 a.m. to 4:00 p.m. ET, or e-mail: nass@nass.usda.gov.

The U.S. Department of Agriculture (USDA) prohibits discrimination in all its programs and activities on the basis of race, color, national origin, age, disability, and where applicable, sex, marital status, familial status, parental status, religion, sexual orientation, genetic information, political beliefs, reprisal, or because all or a part of an individual's income is derived from any public assistance program. (Not all prohibited bases apply to all programs.) Persons with disabilities who require alternative means for communication of program information (Braille, large print, audiotape, etc.) should contact USDA's TARGET Center at (202) 720-2600 (voice and TDD).

To file a complaint of discrimination, write to USDA, Director, Office of Civil Rights, 1400 Independence Avenue, S.W., Washington, D.C. 20250-9410, or call (800) 795-3272 (voice) or (202) 720-6382 (TDD). USDA is an equal opportunity provider and employer.