



# Cattle On Feed

---

Released January 26, 2007, by the National Agricultural Statistics Service (NASS), Agricultural Statistics Board, U.S. Department of Agriculture. For information on *Cattle on Feed* call Mike Miller at (202) 720-3040, office hours 7:30 a.m. to 4:00 p.m. ET.

## U.S. Cattle on Feed Up 1 Percent

**Cattle and calves on feed** for slaughter market in the United States for feedlots with capacity of 1,000 or more head totaled 12.0 million head on January 1, 2007. The inventory was 1 percent above January 1, 2006 and 6 percent above January 1, 2005. This is the highest January 1 inventory since the series began in 1996. The inventory included 7.57 million steers and steer calves, up slightly from the previous year. This group accounted for 63 percent of the total inventory. Heifers and heifer calves accounted for 4.30 million head, up 4 percent from January 1, 2006.

**Placements** in feedlots during December totaled 1.71 million, 9 percent below 2005 and 7 percent below 2004. Net placements were 1.63 million. During December, placements of cattle and calves weighing less than 600 pounds were 470,000, 600-699 pounds were 504,000, 700-799 pounds were 420,000, and 800 pounds and greater were 320,000.

**Marketings** of fed cattle during December totaled 1.63 million, 5 percent below 2005 and 9 percent below 2004. This is the lowest fed cattle marketings for the month of December since the series began in 1996.

**Other disappearance** totaled 88,000 during December, 3 percent below 2005 and 4 percent below 2004.

**Cattle on Feed: Number on Feed, Placements, Marketings, and  
Other Disappearance, 1,000+ Capacity Feedlots,  
United States, January 1, 2005-2007**

Item	Number			2007 as % of	
	2005	2006	2007	2005	2006
	<i>1,000 Head</i>	<i>1,000 Head</i>	<i>1,000 Head</i>	<i>Percent</i>	<i>Percent</i>
On Feed Dec 1 <sup>1 2</sup>	11,334	11,726	11,973	106	102
Placed on Feed During Dec <sup>2</sup>	1,834	1,884	1,714	93	91
Fed Cattle Marketed During Dec <sup>2</sup>	1,777	1,715	1,625	91	95
Other Disappearance During Dec <sup>2 3</sup>	92	91	88	96	97
On Feed Jan 1 <sup>1</sup>	11,299	11,804	11,974	106	101

<sup>1</sup> Cattle and calves on feed are animals for slaughter market being fed a ration of grain or other concentrates and are expected to produce a carcass that will grade select or better.

<sup>2</sup> December preceding year.

<sup>3</sup> Includes death loss, movement from feedlots to pasture, and shipments to other feedlots for further feeding.

**Cattle on Feed: Number on Feed, Placements, Marketings, and  
Other Disappearance, 1,000+ Capacity Feedlots,  
United States, December 1, 2004-2006**

Item	Number			2006 as % of	
	2004	2005	2006	2004	2005
	<i>1,000 Head</i>	<i>1,000 Head</i>	<i>1,000 Head</i>	<i>Percent</i>	<i>Percent</i>
On Feed Nov 1 <sup>1</sup>	11,334	11,473	11,969	106	104
Placed on Feed During Nov	1,743	2,045	*1,884	108	92
Fed Cattle Marketed During Nov	1,635	1,701	*1,797	110	106
Other Disappearance During Nov <sup>2</sup>	108	91	83	77	91
On Feed Dec 1 <sup>1</sup>	11,334	11,726	11,973	106	102

\* Revised.

<sup>1</sup> Cattle and calves on feed are animals for slaughter market being fed a ration of grain or other concentrates and are expected to produce a carcass that will grade select or better.

<sup>2</sup> Includes death loss, movement from feedlots to pasture, and shipments to other feedlots for further feeding.

**Cattle on Feed: Number on Feed by Class, 1,000+ Capacity Feedlots,  
United States, January 1, 2005-2007**

Item	Number			2007 as % of	
	2005	2006	2007	2005	2006
	<i>1,000 Head</i>	<i>1,000 Head</i>	<i>1,000 Head</i>	<i>Percent</i>	<i>Percent</i>
Class on Feed Jan 1					
Steers and Steer Calves	7,175	7,570	7,574	106	100
Heifers and Heifer Calves	4,046	4,147	4,303	106	104
Cows and Bulls	78	87	97	124	111

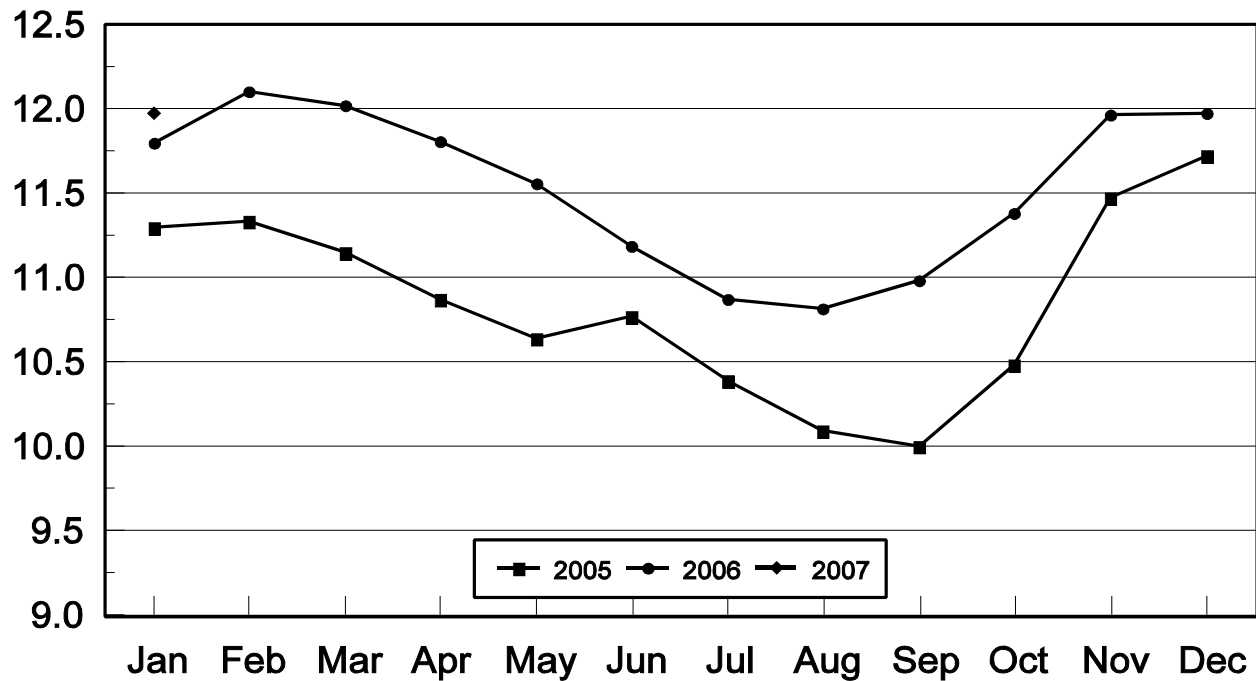
**Cattle on Feed: Number on Feed, 1,000+ Capacity Feedlots,  
by Month, State, and United States 2006-2007 <sup>1</sup>**

State	Jan 1, 2006	Dec 1, 2006	Jan 1, 2007		
			Number	as % of 2006	as % of Dec
	<i>1,000 Head</i>	<i>1,000 Head</i>	<i>1,000 Head</i>	<i>Percent</i>	<i>Percent</i>
AZ	334	341	334	100	98
CA	550	540	550	100	102
CO	1,080	1,120	1,100	102	98
ID	275	270	260	95	96
IA	510	500	520	102	104
KS	2,500	2,550	2,540	102	100
NE	2,430	2,510	2,540	105	101
NM	143	137	136	95	99
OK	370	350	350	95	100
SD	205	210	225	110	107
TX	2,920	2,900	2,870	98	99
WA	152	185	184	121	99
Oth Sts	335	360	365	109	101
US	11,804	11,973	11,974	101	100

<sup>1</sup> Cattle and calves on feed are animals for slaughter market being fed a ration of grain or other concentrates and are expected to produce a carcass that will grade select or better.

## United States Cattle on Feed 1,000+ Capacity Feedlots

Million Head



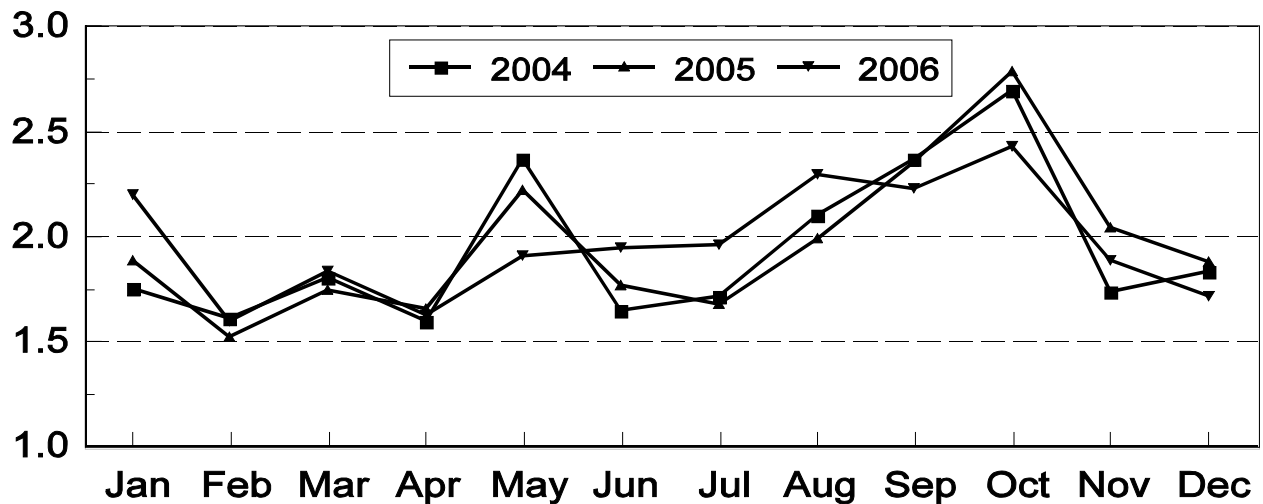
**Cattle on Feed: Number Placed on Feed, 1,000+ Capacity Feedlots,  
by Month, State, and United States 2005-2006**

State	During Dec 2005	During Nov 2006	During Dec 2006		
			Number	as % of 2005	as % of Nov
	<i>1,000 Head</i>	<i>1,000 Head</i>	<i>1,000 Head</i>	<i>Percent</i>	<i>Percent</i>
AZ	35	30	26	74	87
CA	69	69	77	112	112
CO	155	*145	135	87	93
ID	48	43	39	81	91
IA	65	82	82	126	100
KS	495	405	410	83	101
NE	350	460	390	111	85
NM	20	14	15	75	107
OK	64	50	46	72	92
SD	46	56	50	109	89
TX	465	435	370	80	85
WA	26	31	24	92	77
Oth Sts	46	64	50	109	78
US	1,884	*1,884	1,714	91	91

\* Revised.

## United States Cattle on Feed 1,000+ Capacity Feedlots Number Placed

Million Head



**Cattle on Feed: Number Placed on Feed by Weight Group, 1,000+ Capacity  
Feedlots, by Month, State, and United States, 2005-2006**

State	During December									
	Under 600		600-699		700-799		800 Plus		Total	
	2005	2006	2005	2006	2005	2006	2005	2006	2005	2006
	<i>1,000 Head</i>	<i>1,000 Head</i>	<i>1,000 Head</i>	<i>1,000 Head</i>	<i>1,000 Head</i>	<i>1,000 Head</i>	<i>1,000 Head</i>	<i>1,000 Head</i>	<i>1,000 Head</i>	<i>1,000 Head</i>
CO	35	25	45	40	45	40	30	30	155	135
KS	120	95	150	140	135	105	90	70	495	410
NE	60	65	100	115	100	115	90	95	350	390
TX	200	140	165	115	70	80	30	35	465	370
Oth Sts	160	145	94	94	80	80	85	90	419	409
US	575	470	554	504	430	420	325	320	1,884	1,714
	During November									
	Under 600		600-699		700-799		800 Plus		Total	
	2005	2006	2005	2006	2005	2006	2005	2006	2005	2006
	<i>1,000 Head</i>	<i>1,000 Head</i>	<i>1,000 Head</i>	<i>1,000 Head</i>	<i>1,000 Head</i>	<i>1,000 Head</i>	<i>1,000 Head</i>	<i>1,000 Head</i>	<i>1,000 Head</i>	<i>1,000 Head</i>
CO	45	45	60	*40	35	30	25	30	165	*145
KS	155	110	145	115	100	105	65	75	465	405
NE	120	100	145	165	85	95	90	100	440	460
TX	160	145	170	130	120	100	45	60	495	435
Oth Sts	180	155	130	110	80	74	90	100	480	439
US	660	555	650	*560	420	404	315	365	2,045	*1,884

\* Revised.

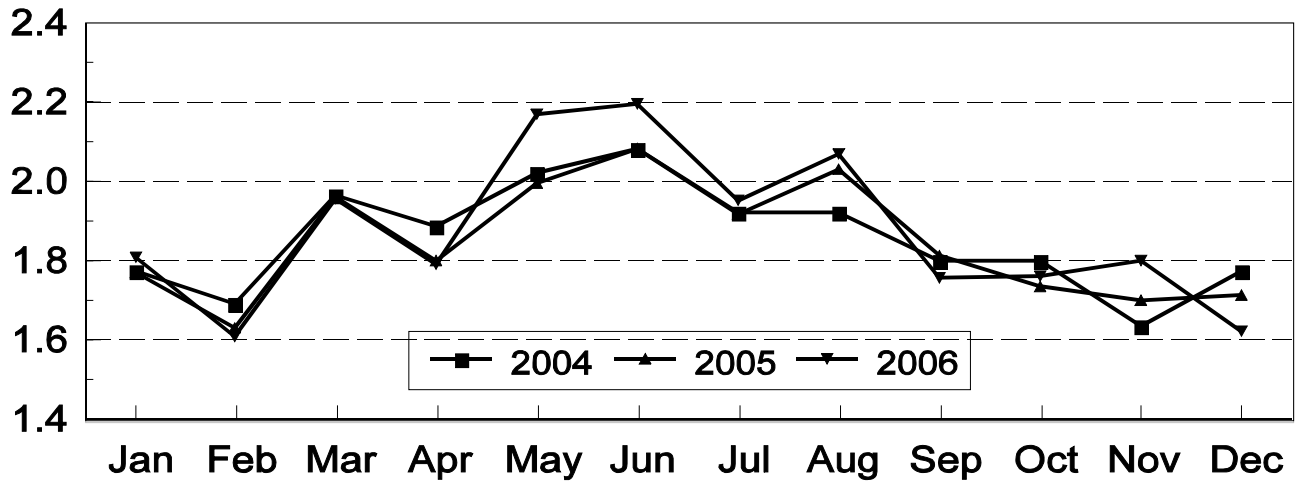
**Cattle on Feed: Number Marketed, 1,000+ Capacity Feedlots,  
by Month, State, and United States 2005-2006**

State	During Dec 2005	During Nov 2006	During Dec 2006		
			Number	as % of 2005	as % of Nov
	<i>1,000 Head</i>	<i>1,000 Head</i>	<i>1,000 Head</i>	<i>Percent</i>	<i>Percent</i>
AZ	27	29	31	115	107
CA	60	55	63	105	115
CO	140	*145	150	107	103
ID	50	56	41	82	73
IA	53	70	59	111	84
KS	435	385	390	90	101
NE	305	380	350	115	92
NM	13	16	15	115	94
OK	57	57	42	74	74
SD	28	35	32	114	91
TX	470	500	385	82	77
WA	34	26	24	71	92
Oth Sts	43	43	43	100	100
US	1,715	*1,797	1,625	95	90

\* Revised.

# United States Cattle on Feed 1,000+ Capacity Feedlots Number Marketed

Million Head



**Cattle on Feed: Other Disappearance, 1,000+ Capacity Feedlots,  
by Month, State, and United States 2005-2006 <sup>1</sup>**

State	During Dec 2005	During Nov 2006	During Dec 2006		
			Number	as % of 2005	as % of Nov
	<i>1,000 Head</i>	<i>1,000 Head</i>	<i>1,000 Head</i>	<i>Percent</i>	<i>Percent</i>
AZ	2	2	2	100	100
CA	9	4	4	44	100
CO	5	10	5	100	50
ID	3	2	8	267	400
IA	2	2	3	150	150
KS	30	20	30	100	150
NE	15	10	10	67	100
NM	1	2	1	100	50
OK	2	3	4	200	133
SD	3	1	3	100	300
TX	15	25	15	100	60
WA	1	1	1	100	100
Oth Sts	3	1	2	67	200
US	91	83	88	97	106

<sup>1</sup> Includes death loss, movement from feedlots to pasture, and shipments to other feedlots for further feeding.

**Cattle on Feed: Number on Feed by Class, 1,000+ Capacity Feedlots,  
by Quarter, State, and United States, 2006-2007**

State	Steers & Steer Calves			Heifers & Heifer Calves			Cows and Bulls		
	Jan 1, 2006	Oct 1, 2006	Jan 1, 2007	Jan 1, 2006	Oct 1, 2006	Jan 1, 2007	Jan 1, 2006	Oct 1, 2006	Jan 1, 2007
	<i>1,000 Head</i>	<i>1,000 Head</i>	<i>1,000 Head</i>	<i>1,000 Head</i>	<i>1,000 Head</i>	<i>1,000 Head</i>	<i>1,000 Head</i>	<i>1,000 Head</i>	<i>1,000 Head</i>
AZ	332	334	331	2	2	3	0	0	0
CA	506	480	495	44	45	55	0	0	0
CO	690	730	710	380	325	380	10	5	10
ID	167	172	148	106	92	102	2	1	10
IA	340	310	350	169	149	169	1	1	1
KS	1,390	1,280	1,360	1,090	1,150	1,155	20	20	25
NE	1,460	1,250	1,580	950	950	940	20	20	20
NM	78	82	82	65	61	54	0	0	0
OK	265	245	230	105	110	120	0	0	0
SD	105	82	115	73	74	85	27	14	25
TX	1,900	1,900	1,800	1,017	1,027	1,067	3	3	3
WA	92	97	103	59	73	80	1	1	1
Oth Sts	245	235	270	87	64	93	3	1	2
US	7,570	7,197	7,574	4,147	4,122	4,303	87	66	97

## Terms and Definitions of Cattle on Feed Estimates

**Cattle on feed** are animals being fed a ration of grain, silage, hay and/or protein supplement for slaughter market that are expected to produce a carcass that will grade select or better. It excludes cattle being "backgrounded only" for later sale as feeders or later placement in another feedlot.

**Placements** are cattle put into a feedlot, fed a ration which will produce a carcass that will grade select or better, and are intended for the slaughter market.

**Marketings** are cattle shipped out of feedlots to a slaughter market.

**Other disappearance** includes death loss, movement from feedlots to pasture, and shipments to other feedlots for further feeding.

## Reliability of Cattle on Feed Estimates

**Survey Procedures:** During January and July all known feedlots in the U.S. with capacity of 1,000 or more head are surveyed to provide data for cattle on feed estimates. During the other months, all known feedlots from 17 States are surveyed. The 17 States account for 98 percent of the cattle on feed in feedlots with capacity of 1,000 or more head.

**Estimating Procedures:** These cattle on feed estimates were prepared by the Agricultural Statistics Board after reviewing recommendations and analysis submitted by each State office. Regional and State survey data were reviewed for reasonableness with each other and with estimates from the previous month when setting the current estimates.

**Revision Policy:** Revisions to previous estimates are made to improve month to month relationships. Estimates for the previous month are subject to revision in all States each month when current estimates are made. In February, all monthly estimates for the previous year, and the number of feedlots and annual marketings from two years ago are reviewed and subject to revisions. The reviews are primarily based on slaughter data, state check-off or brand data, and any other data that may have been received after the original estimate was made. Estimates will also be reviewed after data from the Census of Agriculture are available. No revisions will be made after that date and estimates become final.

**Reliability:** Since all 1,000+ capacity cattle on feed operators in every State are not included in the monthly survey, survey estimates are subject to sampling variability. Survey results are also subject to non-sampling errors such as omissions, duplications, and mistakes in reporting, recording, and processing the data. The effects of these errors cannot be measured directly. They are minimized through rigid quality controls in the data collection process and through a careful review of all reported data for consistency and reasonableness.

To assist users in evaluating the reliability of estimates in this report, the "**Root Mean Square Error**" is shown for selected items in the following table. The "Root Mean Square Error" is a statistical measure based on past performance and is computed using the differences between first and latest estimates. The "Root Mean Square Error" for cattle on feed inventory estimates over the past 10 years is .2 percent. This means that chances are 2 out of 3 that the final estimate will not be above or below the current estimate of 12.0 million head by more than .2 percent. Chances are 9 out of 10 that the difference will not exceed .4 percent.

The following table also shows a 10 year record of the range of differences between first and latest estimates for selected items. Using estimates of number on feed as an example, changes between the first estimate and the latest estimate during the past 10 years have averaged 14,000 head, ranging from 0



to 70,000 head. During this period the initial estimate has been below the final estimate 4 times, and above the final estimate 1 time. This does not imply that the initial estimate is likely to understate or overstate final inventory.

**Reliability of U.S. January 1 Cattle on Feed Estimates <sup>1</sup>**

Item	Root Mean Square Error	90% Confidence Level		Difference Between First and Final Estimates <sup>1</sup>			Number of Years	
		Percent	(000) Head	Average	Smallest	Largest	First Above Final	First Below Final
	<i>Percent</i>	<i>Percent</i>	<i>1,000 Head</i>	<i>1,000 Head</i>	<i>1,000 Head</i>	<i>1,000 Head</i>	<i>Number</i>	<i>Number</i>
Number on Feed	0.2	0.4	53.1	14	0	70	1	4
Placements	0.5	0.9	16.2	4	0	20	0	2
Marketings	0.2	0.3	5.3	1	0	10	1	1

<sup>1</sup> Based on data for the past 10 years.

### Information Contacts

Listed below are the commodity specialists in the Livestock Branch of the National Agricultural Statistics Service to contact for additional information.

Dan Kerestes, Chief, Livestock Branch . . . . . (202) 720-3570

William Weaver, Head, Livestock Section . . . . . (202) 720-3570

    Bruce Boess - Hogs and Pigs . . . . . (202) 720-3106

    Shawn Clark - Dairy Products . . . . . (202) 690-3236

    Jason Hardegree - Milk Production and Milk Cows . . . . . (202) 720-3278

    Scott Hollis - Sheep & Lambs, Goats . . . . . (202) 720-4751

    Mike Miller - Cattle, Cattle on Feed . . . . . (202) 720-3040

    Katy Paulsen - Livestock Slaughter . . . . . (515) 284-4340

    Charmaine Wilson - Dairy Products Prices . . . . . (202) 690-2168

## ACCESS TO REPORTS!!

---

For your convenience, there are several ways to obtain NASS reports, data products, and services:

### INTERNET ACCESS

All NASS reports are available free of charge on the worldwide Internet. For access, connect to the Internet and go to the NASS Home Page at: [www.nass.usda.gov](http://www.nass.usda.gov).

### E-MAIL SUBSCRIPTION

All NASS reports are available by subscription free of charge direct to your e-mail address. Starting with the NASS Home Page at [www.nass.usda.gov](http://www.nass.usda.gov), under the right navigation, *Receive reports by Email*, click on **National** or **State**. Follow the instructions on the screen.

-----

### PRINTED REPORTS OR DATA PRODUCTS

**CALL OUR TOLL-FREE ORDER DESK: 800-999-6779 (U.S. and Canada)**  
**Other areas, please call 703-605-6220      FAX: 703-605-6900**  
**(Visa, MasterCard, check, or money order acceptable for payment.)**

-----

### ASSISTANCE

For **assistance** with general agricultural statistics or further information about NASS or its products or services, contact the **Agricultural Statistics Hotline** at **800-727-9540**, 7:30 a.m. to 4:00 p.m. ET, or e-mail: [nass@nass.usda.gov](mailto:nass@nass.usda.gov).

The U.S. Department of Agriculture (USDA) prohibits discrimination in all its programs and activities on the basis of race, color, national origin, age, disability, and where applicable, sex, marital status, familial status, parental status, religion, sexual orientation, genetic information, political beliefs, reprisal, or because all or a part of an individual's income is derived from any public assistance program. (Not all prohibited bases apply to all programs.) Persons with disabilities who require alternative means for communication of program information (Braille, large print, audiotape, etc.) should contact USDA's TARGET Center at (202) 720-2600 (voice and TDD).

To file a complaint of discrimination, write to USDA, Director, Office of Civil Rights, 1400 Independence Avenue, S.W., Washington, D.C. 20250-9410, or call (800) 795-3272 (voice) or (202) 720-6382 (TDD). USDA is an equal opportunity provider and employer.