



NASS

FACT FINDERS FOR AGRICULTURE
UNITED STATES DEPARTMENT OF AGRICULTURE

Washington, D.C.

Cattle On Feed

Released February 23, 2007, by the National Agricultural Statistics Service (NASS), Agricultural Statistics Board, U.S. Department of Agriculture. For information on *Cattle on Feed* call Mike Miller at (202) 720-3040, office hours 7:30 a.m. to 4:00 p.m. ET.

U.S. Cattle on Feed Down 3 Percent

Cattle and calves on feed for slaughter market in the United States for feedlots with capacity of 1,000 or more head totaled 11.7 million head on February 1, 2007. The inventory was 3 percent below February 1, 2006 but 3 percent above February 1, 2005.

Placements in feedlots during January totaled 1.69 million, 23 percent below 2006 and 10 percent below 2005. Net placements were 1.59 million. This is the second lowest placements for the month of January since the series began in 1996. During January, placements of cattle and calves weighing less than 600 pounds were 320,000, 600-699 pounds were 390,000, 700-799 pounds were 545,000, and 800 pounds and greater were 435,000.

Marketings of fed cattle during January totaled 1.84 million, up 2 percent from 2006 and up 4 percent from 2005.

Other disappearance totaled 97,000 during January, 17 percent above 2006 and 33 percent above 2005.

2006 Cattle on Feed and Annual Size Group Estimates

This report contains the 2006 monthly cattle on feed estimates for feedlots with capacity of 1,000 or more head. Also included are the number of feedlots, inventory, and annual marketings by size group for 2005 and 2006. Data for total U.S. capacity of 1,000 or more head feedlots are also published in this issue. These data are measured by the number of head.

Cattle and calves on feed for slaughter market in the United States for feedlots with capacity of 1,000 or more head represented 83.9 percent of all cattle and calves on feed in the United States on January 1, 2007, up from 83.5 percent on January 1, 2006.

Marketings of fed cattle for feedlots with capacity of 1,000 or more head during 2006 represented 86.1 percent all cattle marketed from feedlots in the United States, up from 86.0 percent during 2005.

**Cattle on Feed: Number on Feed, Placements, Marketings, and
Other Disappearance, 1,000+ Capacity Feedlots,
United States, February 1, 2005-2007**

Item	Number			2007 as % of	
	2005	2006	2007	2005	2006
	<i>1,000 Head</i>	<i>1,000 Head</i>	<i>1,000 Head</i>	<i>Percent</i>	<i>Percent</i>
On Feed Jan 1 ¹	11,299	11,804	11,974	106	101
Placed on Feed During Jan	1,888	2,199	1,690	90	77
Fed Cattle Marketed During Jan	1,772	1,810	1,841	104	102
Other Disappearance During Jan ²	73	83	97	133	117
On Feed Feb 1 ¹	11,342	12,110	11,726	103	97

¹ Cattle and calves on feed are animals for slaughter market being fed a ration of grain or other concentrates and are expected to produce a carcass that will grade select or better.

² Includes death loss, movement from feedlots to pasture, and shipments to other feedlots for further feeding.

**Cattle on Feed: Number on Feed, Placements, Marketings, and
Other Disappearance, 1,000+ Capacity Feedlots,
United States, January 1, 2005-2007**

Item	Number			2007 as % of	
	2005	2006	2007	2005	2006
	<i>1,000 Head</i>	<i>1,000 Head</i>	<i>1,000 Head</i>	<i>Percent</i>	<i>Percent</i>
On Feed Dec 1 ^{1 2}	11,334	11,726	11,973	106	102
Placed on Feed During Dec ²	1,834	1,884	1,714	93	91
Fed Cattle Marketed During Dec ²	1,777	1,715	1,625	91	95
Other Disappearance During Dec ^{2 3}	92	91	88	96	97
On Feed Jan 1 ¹	11,299	11,804	11,974	106	101

¹ Cattle and calves on feed are animals for slaughter market being fed a ration of grain or other concentrates and are expected to produce a carcass that will grade select or better.

² December preceding year.

³ Includes death loss, movement from feedlots to pasture, and shipments to other feedlots for further feeding.

**Cattle on Feed: Number on Feed by Class, 1,000+ Capacity Feedlots,
United States, January 1, 2005-2007**

Item	Number			2007 as % of	
	2005	2006	2007	2005	2006
	<i>1,000 Head</i>	<i>1,000 Head</i>	<i>1,000 Head</i>	<i>Percent</i>	<i>Percent</i>
Class on Feed Jan 1					
Steers and Steer Calves	7,175	7,570	7,574	106	100
Heifers and Heifer Calves	4,046	4,147	4,303	106	104
Cows and Bulls	78	87	97	124	111

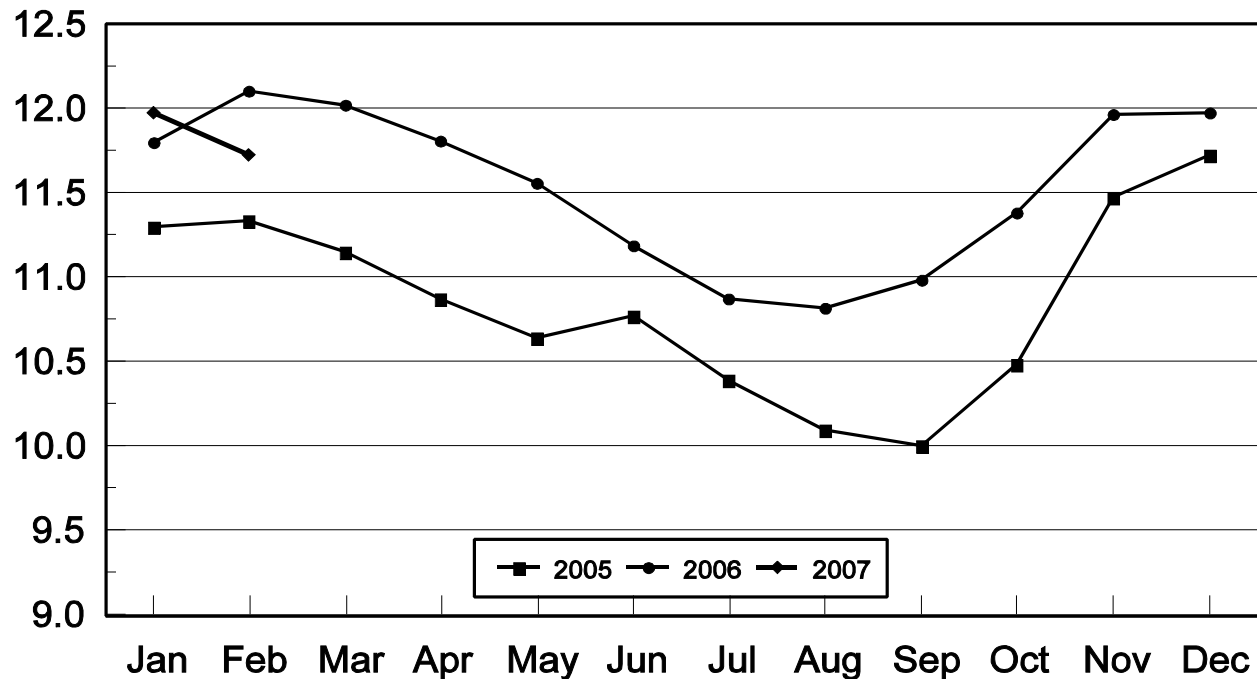
**Cattle on Feed: Number on Feed, 1,000+ Capacity Feedlots,
by Month, State, and United States 2006-2007 ¹**

State	Feb 1, 2006	Jan 1, 2007	Feb 1, 2007		
			Number	as % of 2006	as % of Jan
	<i>1,000 Head</i>	<i>1,000 Head</i>	<i>1,000 Head</i>	<i>Percent</i>	<i>Percent</i>
AZ	346	334	334	97	100
CA	550	550	540	98	98
CO	1,110	1,100	1,040	94	95
ID	265	260	255	96	98
IA	520	520	530	102	102
KS	2,580	2,540	2,430	94	96
NE	2,490	2,540	2,540	102	100
NM	146	136	135	92	99
OK	375	350	350	93	100
SD	210	225	230	110	102
TX	3,030	2,870	2,800	92	98
WA	153	184	177	116	96
Oth Sts	335	365	365	109	100
US	12,110	11,974	11,726	97	98

¹ Cattle and calves on feed are animals for slaughter market being fed a ration of grain or other concentrates and are expected to produce a carcass that will grade select or better.

United States Cattle on Feed 1,000+ Capacity Feedlots

Million Head



**Cattle on Feed: Number Placed on Feed, 1,000+ Capacity Feedlots,
by Month, State, and United States 2006-2007**

State	During Jan 2006	During Dec 2006	During Jan 2007		
			Number	as % of 2006	as % of Dec
	<i>1,000 Head</i>	<i>1,000 Head</i>	<i>1,000 Head</i>	<i>Percent</i>	<i>Percent</i>
AZ	39	26	33	85	127
CA	71	77	64	90	83
CO	225	135	155	69	115
ID	46	39	43	93	110
IA	81	82	76	94	93
KS	570	410	365	64	89
NE	425	390	420	99	108
NM	18	15	8	44	53
OK	65	46	50	77	109
SD	38	50	50	132	100
TX	540	370	340	63	92
WA	33	24	27	82	113
Oth Sts	48	50	59	123	118
US	2,199	1,714	1,690	77	99

**Cattle on Feed: Number Placed on Feed by Weight Group, 1,000+ Capacity
Feedlots, by Month, State, and United States, 2005-2007**

State	During January									
	Under 600		600-699		700-799		800 Plus		Total	
	2006	2007	2006	2007	2006	2007	2006	2007	2006	2007
	<i>1,000 Head</i>	<i>1,000 Head</i>	<i>1,000 Head</i>	<i>1,000 Head</i>	<i>1,000 Head</i>	<i>1,000 Head</i>	<i>1,000 Head</i>	<i>1,000 Head</i>	<i>1,000 Head</i>	<i>1,000 Head</i>
CO	35	15	45	35	85	55	60	50	225	155
KS	95	50	125	110	220	125	130	80	570	365
NE	50	45	80	85	150	150	145	140	425	420
TX	210	85	115	85	150	120	65	50	540	340
Oth Sts	140	125	82	75	97	95	120	115	439	410
US	530	320	447	390	702	545	520	435	2,199	1,690
	During December									
	Under 600		600-699		700-799		800 Plus		Total	
	2005	2006	2005	2006	2005	2006	2005	2006	2005	2006
	<i>1,000 Head</i>	<i>1,000 Head</i>	<i>1,000 Head</i>	<i>1,000 Head</i>	<i>1,000 Head</i>	<i>1,000 Head</i>	<i>1,000 Head</i>	<i>1,000 Head</i>	<i>1,000 Head</i>	<i>1,000 Head</i>
CO	35	25	45	40	45	40	30	30	155	135
KS	120	95	150	140	135	105	90	70	495	410
NE	60	65	100	115	100	115	90	95	350	390
TX	200	140	165	115	70	80	30	35	465	370
Oth Sts	160	145	94	94	80	80	85	90	419	409
US	575	470	554	504	430	420	325	320	1,884	1,714

**Cattle on Feed: Number Marketed, 1,000+ Capacity Feedlots,
by Month, State, and United States 2006-2007**

State	During Jan 2006	During Dec 2006	During Jan 2007		
			Number	as % of 2006	as % of Dec
	<i>1,000 Head</i>	<i>1,000 Head</i>	<i>1,000 Head</i>	<i>Percent</i>	<i>Percent</i>
AZ	26	31	32	123	103
CA	62	63	72	116	114
CO	185	150	200	108	133
ID	51	41	47	92	115
IA	69	59	64	93	108
KS	465	390	445	96	114
NE	355	350	405	114	116
NM	13	15	8	62	53
OK	57	42	48	84	114
SD	32	32	42	131	131
TX	420	385	390	93	101
WA	31	24	33	106	138
Oth Sts	44	43	55	125	128
US	1,810	1,625	1,841	102	113

**Cattle on Feed: Other Disappearance, 1,000+ Capacity Feedlots,
by Month, State, and United States 2006-2007 ¹**

State	During Jan 2006	During Dec 2006	During Jan 2007		
			Number	as % of 2006	as % of Dec
	<i>1,000 Head</i>	<i>1,000 Head</i>	<i>1,000 Head</i>	<i>Percent</i>	<i>Percent</i>
AZ	1	2	1	100	50
CA	9	4	2	22	50
CO	10	5	15	150	300
ID	5	8	1	20	13
IA	2	3	2	100	67
KS	25	30	30	120	100
NE	10	10	15	150	150
NM	2	1	1	50	100
OK	3	4	2	67	50
SD	1	3	3	300	100
TX	10	15	20	200	133
WA	1	1	1	100	100
Oth Sts	4	2	4	100	200
US	83	88	97	117	110

¹ Includes death loss, movement from feedlots to pasture, and shipments to other feedlots for further feeding.

**Cattle on Feed: Number on Feed, 1,000+ Capacity Feedlots,
by Month, State, and United States, 2006¹**

State	Jan 1	Feb 1	Mar 1	Apr 1	May 1	Jun 1
	<i>1,000 Head</i>	<i>1,000 Head</i>	<i>1,000 Head</i>	<i>1,000 Head</i>	<i>1,000 Head</i>	<i>1,000 Head</i>
AZ	334	346	351	351	345	341
CA	550	550	550	535	530	535
CO	1,080	1,110	1,090	1,070	1,060	1,030
ID	275	265	255	250	245	230
IA	510	520	520	500	495	470
KS	2,500	2,580	2,610	2,590	2,530	2,400
NE	2,430	2,490	2,450	2,400	2,320	2,120
NM	143	146	143	139	132	135
OK	370	375	365	360	340	345
SD	205	210	210	210	200	195
TX	2,920	3,030	3,010	2,940	2,910	2,960
WA	152	153	154	152	152	141
Oth Sts	335	335	315	315	300	285
US	11,804	12,110	12,023	11,812	11,559	11,187
	Jul 1	Aug 1	Sep 1	Oct 1	Nov 1	Dec 1
	<i>1,000 Head</i>	<i>1,000 Head</i>	<i>1,000 Head</i>	<i>1,000 Head</i>	<i>1,000 Head</i>	<i>1,000 Head</i>
AZ	344	339	336	336	342	341
CA	530	515	520	525	530	540
CO	980	940	960	1,060	1,130	1,120
ID	230	225	235	265	285	270
IA	460	445	455	460	490	500
KS	2,280	2,360	2,390	2,450	2,550	2,550
NE	1,990	1,950	2,050	2,220	2,440	2,510
NM	140	144	142	143	141	137
OK	340	345	345	355	360	350
SD	180	165	155	170	190	210
TX	2,980	2,970	2,960	2,930	2,990	2,900
WA	148	154	158	171	181	185
Oth Sts	270	270	280	300	340	360
US	10,872	10,822	10,986	11,385	11,969	11,973

¹ Cattle and calves on feed are animals for slaughter market being fed a ration of grain or other concentrates and are expected to produce a carcass that will grade select or better.

**Cattle on Feed: Number Placed on Feed, 1,000+ Capacity Feedlots,
by Month, State, and United States, 2005-2006**

State	During					
	Dec	Jan	Feb	Mar	Apr	May
	<i>1,000 Head</i>	<i>1,000 Head</i>	<i>1,000 Head</i>	<i>1,000 Head</i>	<i>1,000 Head</i>	<i>1,000 Head</i>
AZ	35	39	31	30	27	29
CA	69	71	63	59	60	80
CO	155	225	*140	155	*130	*165
ID	48	46	32	42	31	37
IA	65	81	60	55	64	51
KS	495	570	410	480	375	415
NE	350	425	330	335	320	340
NM	20	18	13	21	18	25
OK	64	65	49	68	48	76
SD	46	38	33	36	28	33
TX	465	540	360	485	455	590
WA	26	33	25	26	23	20
Oth Sts	46	48	42	45	40	42
US	1,884	2,199	*1,588	1,837	*1,619	*1,903
	During					
	Jun	Jul	Aug	Sep	Oct	Nov
	<i>1,000 Head</i>	<i>1,000 Head</i>	<i>1,000 Head</i>	<i>1,000 Head</i>	<i>1,000 Head</i>	<i>1,000 Head</i>
AZ	34	31	30	28	34	30
CA	73	55	66	72	71	69
CO	170	*145	*200	240	215	145
ID	58	36	55	72	71	43
IA	59	60	80	81	109	82
KS	445	590	590	500	520	405
NE	370	380	470	500	560	460
NM	33	23	26	21	14	14
OK	63	58	77	71	65	50
SD	29	24	30	50	64	56
TX	530	480	570	495	590	435
WA	39	33	35	37	34	31
Oth Sts	43	43	61	60	83	64
US	1,946	*1,958	*2,290	2,227	2,430	1,884

* Revised.

**Cattle on Feed: Number Placed on Feed by Weight Group, 1,000+ Capacity
Feedlots, by Month, State, and United States, 2005-2006**

State	During December				
	Under 600	600-699	700-799	800 Plus	Total
	<i>1,000 Head</i>	<i>1,000 Head</i>	<i>1,000 Head</i>	<i>1,000 Head</i>	<i>1,000 Head</i>
CO	35	45	45	30	155
KS	120	150	135	90	495
NE	60	100	100	90	350
TX	200	165	70	30	465
Oth Sts	160	94	80	85	419
US	575	554	430	325	1,884
	During January				
	Under 600	600-699	700-799	800 Plus	Total
	<i>1,000 Head</i>	<i>1,000 Head</i>	<i>1,000 Head</i>	<i>1,000 Head</i>	<i>1,000 Head</i>
CO	35	45	85	60	225
KS	95	125	220	130	570
NE	50	80	150	145	425
TX	210	115	150	65	540
Oth Sts	140	82	97	120	439
US	530	447	702	520	2,199
	During February				
	Under 600	600-699	700-799	800 Plus	Total
	<i>1,000 Head</i>	<i>1,000 Head</i>	<i>1,000 Head</i>	<i>1,000 Head</i>	<i>1,000 Head</i>
CO	20	30	*50	*40	*140
KS	60	85	145	120	410
NE	55	60	105	110	330
TX	110	70	120	60	360
Oth Sts	110	55	85	98	348
US	355	300	*505	*428	*1,588

See footnote(s) at end of table.

--continued

**Cattle on Feed: Number Placed on Feed by Weight Group, 1,000+ Capacity
Feedlots, by Month, State, and United States, 2005-2006 (continued)**

State	During March				
	Under 600	600-699	700-799	800 Plus	Total
	<i>1,000 Head</i>	<i>1,000 Head</i>	<i>1,000 Head</i>	<i>1,000 Head</i>	<i>1,000 Head</i>
CO	25	30	60	40	155
KS	70	80	165	165	480
NE	50	50	90	145	335
TX	120	120	165	80	485
Oth Sts	115	62	85	120	382
US	380	342	565	550	1,837
	During April				
	Under 600	600-699	700-799	800 Plus	Total
	<i>1,000 Head</i>	<i>1,000 Head</i>	<i>1,000 Head</i>	<i>1,000 Head</i>	<i>1,000 Head</i>
CO	40	*20	35	*35	*130
KS	60	65	115	135	375
NE	60	45	85	130	320
TX	120	95	135	105	455
Oth Sts	105	40	74	120	339
US	385	*265	444	*525	*1,619
	During May				
	Under 600	600-699	700-799	800 Plus	Total
	<i>1,000 Head</i>	<i>1,000 Head</i>	<i>1,000 Head</i>	<i>1,000 Head</i>	<i>1,000 Head</i>
CO	35	40	*45	*45	*165
KS	65	85	115	150	415
NE	65	50	80	145	340
TX	155	135	170	130	590
Oth Sts	120	60	88	125	393
US	440	370	*498	*595	*1,903

See footnote(s) at end of table.

--continued

**Cattle on Feed: Number Placed on Feed by Weight Group, 1,000+ Capacity
Feedlots, by Month, State, and United States, 2005-2006 (continued)**

State	During June				
	Under 600	600-699	700-799	800 Plus	Total
	<i>1,000 Head</i>	<i>1,000 Head</i>	<i>1,000 Head</i>	<i>1,000 Head</i>	<i>1,000 Head</i>
CO	50	35	55	30	170
KS	115	105	105	120	445
NE	80	60	90	140	370
TX	190	170	115	55	530
Oth Sts	130	60	91	150	431
US	565	430	456	495	1,946
	During July				
	Under 600	600-699	700-799	800 Plus	Total
	<i>1,000 Head</i>	<i>1,000 Head</i>	<i>1,000 Head</i>	<i>1,000 Head</i>	<i>1,000 Head</i>
CO	40	30	40	*35	*145
KS	140	145	165	140	590
NE	60	65	100	155	380
TX	220	110	105	45	480
Oth Sts	110	53	80	120	363
US	570	403	490	*495	*1,958
	During August				
	Under 600	600-699	700-799	800 Plus	Total
	<i>1,000 Head</i>	<i>1,000 Head</i>	<i>1,000 Head</i>	<i>1,000 Head</i>	<i>1,000 Head</i>
CO	50	25	50	*75	*200
KS	140	120	185	145	590
NE	80	75	115	200	470
TX	280	140	95	55	570
Oth Sts	130	70	90	170	460
US	680	430	535	*645	*2,290

See footnote(s) at end of table.

--continued

**Cattle on Feed: Number Placed on Feed by Weight Group, 1,000+ Capacity
Feedlots, by Month, State, and United States, 2005-2006 (continued)**

State	During September				
	Under 600	600-699	700-799	800 Plus	Total
	<i>1,000 Head</i>	<i>1,000 Head</i>	<i>1,000 Head</i>	<i>1,000 Head</i>	<i>1,000 Head</i>
CO	45	35	50	110	240
KS	185	105	100	110	500
NE	105	70	120	205	500
TX	230	135	85	45	495
Oth Sts	155	67	95	175	492
US	720	412	450	645	2,227
	During October				
	Under 600	600-699	700-799	800 Plus	Total
	<i>1,000 Head</i>	<i>1,000 Head</i>	<i>1,000 Head</i>	<i>1,000 Head</i>	<i>1,000 Head</i>
CO	55	55	45	60	215
KS	180	120	125	95	520
NE	175	175	95	115	560
TX	210	185	135	60	590
Oth Sts	220	115	85	125	545
US	840	650	485	455	2,430
	During November				
	Under 600	600-699	700-799	800 Plus	Total
	<i>1,000 Head</i>	<i>1,000 Head</i>	<i>1,000 Head</i>	<i>1,000 Head</i>	<i>1,000 Head</i>
CO	45	40	30	30	145
KS	110	115	105	75	405
NE	100	165	95	100	460
TX	145	130	100	60	435
Oth Sts	155	110	74	100	439
US	555	560	404	365	1,884

* Revised.

**Cattle on Feed: Number Marketed, 1,000+ Capacity Feedlots,
by Month, State, and United States, 2005-2006**

State	During					
	Dec	Jan	Feb	Mar	Apr	May
	<i>1,000 Head</i>	<i>1,000 Head</i>	<i>1,000 Head</i>	<i>1,000 Head</i>	<i>1,000 Head</i>	<i>1,000 Head</i>
AZ	27	26	24	28	24	27
CA	60	62	56	68	60	70
CO	140	185	*155	165	*130	*175
ID	50	51	38	45	34	47
IA	53	69	58	73	66	74
KS	435	465	360	470	410	520
NE	305	355	360	370	390	520
NM	13	13	14	23	24	21
OK	57	57	56	72	66	70
SD	28	32	29	35	35	34
TX	470	420	370	540	470	520
WA	34	31	22	27	22	30
Oth Sts	43	44	60	42	54	52
US	1,715	1,810	*1,602	1,958	*1,785	*2,160
	During					
	Jun	Jul	Aug	Sep	Oct	Nov
	<i>1,000 Head</i>	<i>1,000 Head</i>	<i>1,000 Head</i>	<i>1,000 Head</i>	<i>1,000 Head</i>	<i>1,000 Head</i>
AZ	30	34	31	26	27	29
CA	74	67	59	64	62	55
CO	210	*175	*175	135	135	145
ID	55	40	44	41	50	56
IA	66	73	69	73	78	70
KS	550	495	540	420	395	385
NE	490	410	360	320	330	380
NM	27	18	26	16	13	16
OK	67	52	76	59	58	57
SD	41	38	37	34	43	35
TX	500	480	570	510	510	500
WA	31	26	30	23	23	26
Oth Sts	57	42	50	39	41	43
US	2,198	*1,950	*2,067	1,760	1,765	1,797

* Revised.

**Cattle on Feed: Number on Feed by Class, 1,000+ Capacity Feedlots,
by Quarter, State, and United States, 2006**

State	Steers & Steer Calves				Heifers & Heifer Calves			
	Jan 1	Apr 1	Jul 1	Oct 1	Jan 1	Apr 1	Jul 1	Oct 1
	<i>1,000 Head</i>	<i>1,000 Head</i>	<i>1,000 Head</i>	<i>1,000 Head</i>	<i>1,000 Head</i>	<i>1,000 Head</i>	<i>1,000 Head</i>	<i>1,000 Head</i>
AZ	332	342	341	334	2	9	3	2
CA	506	500	487	480	44	35	40	45
CO	690	740	650	730	380	320	320	325
ID	167	158	149	172	106	90	79	92
IA	340	355	320	310	169	144	139	149
KS	1,390	1,460	1,300	1,280	1,090	1,110	970	1,150
NE	1,460	1,480	1,240	1,250	950	900	740	950
NM	78	77	84	82	65	62	56	61
OK	265	245	240	245	105	115	100	110
SD	105	115	85	82	73	79	72	74
TX	1,900	1,940	1,900	1,900	1,017	999	1,075	1,027
WA	92	88	81	97	59	62	66	73
Oth Sts	245	240	215	235	87	72	50	64
US	7,570	7,740	7,092	7,197	4,147	3,997	3,710	4,122
	Cows and Bulls							
	Jan 1	Apr 1	Jul 1	Oct 1				
	<i>1,000 Head</i>	<i>1,000 Head</i>	<i>1,000 Head</i>	<i>1,000 Head</i>				
AZ	0	0	0	0				
CA	0	0	0	3				
CO	10	10	10	10				
ID	2	2	2	2				
IA	1	1	1	1				
KS	20	20	20	10				
NE	20	20	20	10				
NM	0	0	0	0				
OK	0	0	0	0				
SD	27	16	23	14				
TX	3	1	5	3				
WA	1	2	1	1				
Oth Sts	3	3	5	1				
US	87	75	70	66				

**Cattle on Feed: Number of Feedlots, Inventory, and Marketings, by
Size of Feedlot, United States 2005-2006 ¹ (continued)**

Year and State	Feedlot Capacity in Number of Head					
	1,000 - 1,999			2,000 - 3,999		
	Lots	Inventory	Cattle Marketed	Lots	Inventory	Cattle Marketed
	<i>Number</i>	<i>1,000 Head</i>	<i>1,000 Head</i>	<i>Number</i>	<i>1,000 Head</i>	<i>1,000 Head</i>
2005	855	506	811	547	777	1,307
2006	818	488	797	552	804	1,347

¹ Number of feedlots is the number of lots operating at anytime during the year. Inventory is the number on hand January 1 of the following year. The United States totals show the actual number of feedlots, inventory, and number of animals marketed in each size group. The sum of the number shown by State under a specified size group may or may not add to the United States total for that size group since for some states size groups are combined to avoid disclosing individual operations.

**Cattle on Feed: Number of Feedlots, Inventory, and Marketings, by
Size of Feedlot, United States 2005-2006 ¹ (continued)**

Year and State	Feedlot Capacity in Number of Head					
	4,000 - 7,999			8,000 -15,999		
	Lots	Inventory	Cattle Marketed	Lots	Inventory	Cattle Marketed
	<i>Number</i>	<i>1,000 Head</i>	<i>1,000 Head</i>	<i>Number</i>	<i>1,000 Head</i>	<i>1,000 Head</i>
2005	*349	*1,007	1,780	*185	*1,365	2,609
2006	344	1,035	1,773	190	1,412	2,713

* Revised.

¹ Number of feedlots is the number of lots operating at anytime during the year. Inventory is the number on hand January 1 of the following year. The United States totals show the actual number of feedlots, inventory, and number of animals marketed in each size group. The sum of the number shown by State under a specified size group may or may not add to the United States total for that size group since for some states size groups are combined to avoid disclosing individual operations.

**Cattle on Feed: Number of Feedlots, Inventory, and Marketings,
by Size of Feedlot, State, and United States 2005-2006 ¹ (continued)**

Year and State	Feedlot Capacity in Number of Head					
	1,000 - 3,999			4,000 - 15,999		
	Lots	Inventory	Cattle Marketed	Lots	Inventory	Cattle Marketed
	<i>Number</i>	<i>1,000 Head</i>	<i>1,000 Head</i>	<i>Number</i>	<i>1,000 Head</i>	<i>1,000 Head</i>
2005						
AZ						
CA	4	4	5	4	15	15
CO	76	57	90	52	200	335
ID	19	15	29	21	103	229
IA	310	385	575	² 30	² 125	² 205
KS	69	85	140	87	455	830
NE	530	475	840	198	940	1,770
NM				² 4	² 13	² 23
OK	3	3	7	12	53	95
SD	138	99	190	² 26	² 106	² 213
TX	11	13	20	38	247	475
WA	² 7	² 15	² 26	² 6	² 52	² 140
Oth Sts	240	145	220	² 60	² 190	² 344
US	1,402	1,283	2,118	534	2,372	4,389
2006						
AZ						
CA	4	4	6	5	22	22
CO	62	55	85	50	200	310
ID	17	13	28	22	85	191
IA	300	355	570	² 35	² 165	² 258
KS	60	75	135	81	450	855
NE	530	500	870	199	1,000	1,870
NM				² 4	² 11	² 18
OK	3	4	7	11	46	95
SD	141	114	186	² 27	² 111	² 239
TX	11	11	25	38	224	470
WA	² 7	² 15	² 22	² 6	² 55	² 97
Oth Sts	240	160	230	² 60	² 205	² 337
US	1,370	1,292	2,144	534	2,447	4,486

See footnote(s) at end of table.

--continued

**Cattle on Feed: Number of Feedlots, Inventory, and Marketings, by
Size of Feedlot, State, and United States 2005-2006 ¹ (continued)**

Year and State	Feedlot Capacity in Number of Head					
	16,000 - 31,999			32,000 and Over		
	Lots	Inventory	Cattle Marketed	Lots	Inventory	Cattle Marketed
	<i>Number</i>	<i>1,000 Head</i>	<i>1,000 Head</i>	<i>Number</i>	<i>1,000 Head</i>	<i>1,000 Head</i>
2005						
AZ	² 3	² 28	² 33	3	306	312
CA	6	114	125	7	417	562
CO	*14	270	420	12	553	1,140
ID	² 5	² 157	² 358			
IA						
KS	32	590	1,240	32	1,370	3,070
NE	32	590	1,100	10	425	710
NM	2	34	74	2	96	116
OK	3	68	130	6	246	495
SD						
TX	32	560	1,030	49	2,100	4,230
WA				3	85	211
Oth Sts						
US	*136	2,438	4,574	126	5,711	11,091
2006						
AZ	² 3	² 28	² 34	3	306	303
CA	6	120	160	6	404	572
CO	13	270	390	13	575	1,150
ID	² 6	² 162	² 323			
IA						
KS	33	655	1,390	31	1,360	3,020
NE	30	580	1,115	11	460	780
NM	2	27	56	2	98	152
OK	3	72	135	6	228	495
SD						
TX	32	575	1,070	49	2,060	4,210
WA				3	114	196
Oth Sts						
US	135	2,522	4,758	126	5,713	11,089

See footnote(s) at end of table.

--continued

**Cattle on Feed: Number of Feedlots, Inventory, and Marketings, by
Size of Feedlot, State, and United States 2005-2006 ¹ (continued)**

Year and State	Feedlot Capacity in Number of Head		
	Total - 1,000+ Capacity Feedlots		
	Lots	Inventory	Cattle Marketed
	<i>Number</i>	<i>1,000 Head</i>	<i>1,000 Head</i>
2005			
AZ	6	334	345
CA	21	550	707
CO	*154	1,080	1,985
ID	45	275	616
IA	340	510	780
KS	220	2,500	5,280
NE	770	2,430	4,420
NM	8	143	213
OK	24	370	727
SD	164	205	403
TX	130	2,920	5,755
WA	16	152	377
Oth Sts	300	335	564
US	*2,198	11,804	22,172
2006			
AZ	6	334	337
CA	21	550	760
CO	138	1,100	1,935
ID	45	260	542
IA	335	520	828
KS	205	2,540	5,400
NE	770	2,540	4,635
NM	8	136	226
OK	23	350	732
SD	168	225	425
TX	130	2,870	5,775
WA	16	184	315
Oth Sts	300	365	567
US	2,165	11,974	22,477

* Revised.

¹ Number of feedlots is the number of lots operating at anytime during the year. Inventory is the number on hand January 1 of the following year. The United States totals show the actual number of feedlots, inventory, and number of animals marketed in each size group. The sum of the numbers shown by State under a specified size group may or may not add to the United States total for that size group since for some States size groups are combined to avoid disclosing individual operations.

² Lots, inventory, and marketings from other size groups are included to avoid disclosing individual operations.

**Cattle on Feed: Feedlot Capacity, 1000+ Capacity Feedlots,
United States, January 1, 2005-2007 ¹**

Item	Feedlot Capacity in Number of Head		
	2005	2006	2007
	<i>1,000 Head</i>	<i>1,000 Head</i>	<i>1,000 Head</i>
US	16,600	16,800	16,800

¹ Total capacity of all 1000+ capacity feedlots in the U.S.

**Cattle on Feed: Number of Feedlots, Inventory, and Marketings,
by Size of Feedlot, Region, and United States 2005-2006 ¹**

Year and State	Feedlot Capacity in Number of Head					
	16,000 - 23,999			24,000 - 31,999		
	Lots	Inventory	Cattle Marketed	Lots	Inventory	Cattle Marketed
	<i>Number</i>	<i>1,000 Head</i>	<i>1,000 Head</i>	<i>Number</i>	<i>1,000 Head</i>	<i>1,000 Head</i>
2005						
AZ,CA,TX	20	291	510	19	405	671
CO,KS,NE	51	770	1,435	*27	680	1,325
Oth Sts	*7	*106	*224	*12	*186	*409
US	*78	*1,167	*2,169	58	*1,271	*2,405
2006						
AZ,CA,TX	19	280	500	20	436	756
CO,KS,NE	47	765	1,425	29	740	1,470
Oth Sts	8	125	270	12	176	337
US	74	1,170	2,195	61	1,352	2,563

See footnote(s) at end of table.

--continued

**Cattle on Feed: Number of Feedlots, Inventory, and Marketings, by
Size of Feedlot, Region, and United States 2005-2006 ¹ (continued)**

Year and State	Feedlot Capacity in Number of Head					
	32,000 - 49,999			50,000 and Over		
	Lots	Inventory	Cattle Marketed	Lots	Inventory	Cattle Marketed
	<i>Number</i>	<i>1,000 Head</i>	<i>1,000 Head</i>	<i>Number</i>	<i>1,000 Head</i>	<i>1,000 Head</i>
2005						
AZ,CA,TX	31	1,062	1,838	28	1,761	3,266
CO,KS,NE	*35	1,143	2,355	*19	1,205	2,565
Oth Sts	4	121	231	9	419	836
US	*70	2,326	4,424	*56	3,385	6,667
2006						
AZ,CA,TX	28	874	1,621	30	1,896	3,464
CO,KS,NE	37	1,165	2,390	18	1,230	2,560
Oth Sts	4	116	206	9	432	848
US	69	2,155	4,217	57	3,558	6,872

* Revised.

¹ Number of feedlots is the number of lots operating at anytime during the year. Inventory is the number on hand January 1 of the following year.

**Cattle on Feed: Number of Feedlots, Inventory, and Marketings,
Feedlots With Less Than 1,000 Head Capacity,
by State, and United States 2005-2006 ¹**

Year and State	Lots		Inventory		Cattle Marketed	
	<i>Number</i>		<i>1,000 Head</i>		<i>1,000 Head</i>	
2005						
IL		5,600		157		230
IN		5,700		106		160
IA		8,600		410		600
MI		3,700		150		230
MN		5,400		184		290
MO		3,200		51		80
NE		3,800		170		290
ND		1,100		34		60
OH		6,100		158		270
PA		4,600		70		110
SD		3,000		195		280
WI		7,900		216		320
Oth Sts		27,300		426.9		700
US		86,000		2,327.9		3,620
2006						
IL		5,500		157		240
IN		5,700		102		150
IA		8,400		352		500
MI		3,500		132		210
MN		5,100		177		270
MO		3,200		64		90
NE		3,800		160		300
ND		1,100		33		60
OH		6,100		166		280
PA		4,600		67		120
SD		3,000		195		290
WI		8,000		228		350
Oth Sts		28,000		461.7		780
US		86,000		2,294.7		3,640

¹ Number of feedlots is the number of lots operating at the end of the year. Inventory is the number on hand January 1 of the following year.

**Cattle on Feed: Number of Feedlots, Inventory, and Marketings,
by Size of Feedlot, United States 2005-2006 ¹**

Feedlot Capacity	2005			2006		
	Lots	Inventory	Cattle Marketed	Lots	Inventory	Cattle Marketed
	<i>No.</i>	<i>1,000 Head</i>	<i>1,000 Head</i>	<i>No.</i>	<i>1,000 Head</i>	<i>1,000 Head</i>
Less than 1,000 head	86,000	2,327.9	3,620	86,000	2,294.7	3,640
1,000 head or more	*2,198	11,804	22,172	2,165	11,974	22,477
All Feedlots	*88,198	14,131.9	25,792	88,165	14,268.7	26,117

* Revised.

¹ Number of feedlots with capacity less than 1,000 head is the number of lots operating at the end of the year. Number of feedlots with capacity 1,000 head or more is the number of lots operating at anytime during the year. Inventory is the number on hand January 1 of the following year.

Terms and Definitions of Cattle on Feed Estimates

Cattle on feed are animals being fed a ration of grain, silage, hay and/or protein supplement for slaughter market that are expected to produce a carcass that will grade select or better. It excludes cattle being "backgrounded only" for later sale as feeders or later placement in another feedlot.

Placements are cattle put into a feedlot, fed a ration which will produce a carcass that will grade select or better, and are intended for the slaughter market.

Marketings are cattle shipped out of feedlots to a slaughter market.

Other disappearance includes death loss, movement from feedlots to pasture, and shipments to other feedlots for further feeding.

Reliability of Cattle on Feed Estimates

Survey Procedures: During January and July all known feedlots in the U.S. with capacity of 1,000 or more head are surveyed to provide data for cattle on feed estimates. During the other months, all known feedlots from 17 States are surveyed. The 17 States account for 98 percent of the cattle on feed in feedlots with capacity of 1,000 or more head.

Estimating Procedures: These cattle on feed estimates were prepared by the Agricultural Statistics Board after reviewing recommendations and analysis submitted by each State office. Regional and State survey data were reviewed for reasonableness with each other and with estimates from the previous month when setting the current estimates.

Revision Policy: Revisions to previous estimates are made to improve month to month relationships. Estimates for the previous month are subject to revision in all States each month when current estimates are made. In February, all monthly estimates for the previous year, and the number of feedlots and annual marketings from two years ago are reviewed and subject to revisions. The reviews are primarily based on slaughter data, state check-off or brand data, and any other data that may have been received after the original estimate was made. Estimates will also be reviewed after data from the Census of Agriculture are available. No revisions will be made after that date and estimates become final.

Reliability: Since all 1,000+ capacity cattle on feed operators in every State are not included in the monthly survey, survey estimates are subject to sampling variability. Survey results are also subject to non-sampling errors such as omissions, duplications, and mistakes in reporting, recording, and processing the data. The effects of these errors cannot be measured directly. They are minimized through rigid quality controls in the data collection process and through a careful review of all reported data for consistency and reasonableness.

To assist users in evaluating the reliability of estimates in this report, the "**Root Mean Square Error**" is shown for selected items in the following table. The "Root Mean Square Error" is a statistical measure based on past performance and is computed using the differences between first and latest estimates. The "Root Mean Square Error" for cattle on feed inventory estimates over the past 10 years is .1 percent. This means that chances are 2 out of 3 that the final estimate will not be above or below the current estimate of 11.7 million head by more than .1 percent. Chances are 9 out of 10 that the difference will not exceed .2 percent.

The following table also shows a 10 year record of the range of differences between first and latest estimates for selected items. Using estimates of number on feed as an example, changes between the first estimate and the latest estimate during the past 10 years have averaged 10,000 head, ranging from 0 to 30,000 head. During this period the initial estimate has been below the final estimate 7 times, and above the final estimate 1 time. This does not imply that the initial estimate is likely to understate or overstate final inventory.

Reliability of U.S. February 1 Cattle on Feed Estimates ¹

Item	Root Mean Square Error	90% Confidence Level		Difference Between First and Final Estimates ¹			Number of Years	
		Percent	(000) Head	Average	Smallest	Largest	First Above Final	First Below Final
Number on Feed	0.1	0.2	26.9	10	0	30	1	7
Placements	0.8	1.5	25.4	10	0	46	2	6
Marketings	0.3	0.5	8.4	3	0	10	4	1

¹ Based on data for the past 10 years.

Information Contacts

Listed below are the commodity specialists in the Livestock Branch of the National Agricultural Statistics Service to contact for additional information.

- Dan Kerestes, Chief Livestock Branch (202) 720-3570
- William Weaver, Head, Livestock Section (202) 720-3570
 - Bruce Boess - Hogs and Pigs (202) 720-3106
 - Shawn Clark - Dairy Products (202) 690-3236
 - Jason Hardegree - Milk Production and Milk Cows (202) 720-3278
 - Scott Hollis - Sheep & Lambs, Goats (202) 720-4751
 - Mike Miller - Cattle, Cattle on Feed (202) 720-3040
 - Katy Paulsen - Livestock Slaughter (515) 284-4340
 - Charmaine Wilson - Dairy Products Prices (202) 690-2168

ACCESS TO REPORTS!!

For your convenience, there are several ways to obtain NASS reports, data products, and services:

INTERNET ACCESS

All NASS reports are available free of charge on the worldwide Internet. For access, connect to the Internet and go to the NASS Home Page at: **www.nass.usda.gov**.

E-MAIL SUBSCRIPTION

All NASS reports are available by subscription free of charge direct to your e-mail address. Starting with the NASS Home Page at **www.nass.usda.gov**, under the right navigation, *Receive reports by Email*, click on **National** or **State**. Follow the instructions on the screen.

PRINTED REPORTS OR DATA PRODUCTS

CALL OUR TOLL-FREE ORDER DESK: 800-999-6779 (U.S. and Canada)
Other areas, please call 703-605-6220 FAX: 703-605-6900
(Visa, MasterCard, check, or money order acceptable for payment.)

ASSISTANCE

For **assistance** with general agricultural statistics or further information about NASS or its products or services, contact the **Agricultural Statistics Hotline** at **800-727-9540**, 7:30 a.m. to 4:00 p.m. ET, or e-mail: **nass@nass.usda.gov**.

The U.S. Department of Agriculture (USDA) prohibits discrimination in all its programs and activities on the basis of race, color, national origin, age, disability, and where applicable, sex, marital status, familial status, parental status, religion, sexual orientation, genetic information, political beliefs, reprisal, or because all or a part of an individual's income is derived from any public assistance program. (Not all prohibited bases apply to all programs.) Persons with disabilities who require alternative means for communication of program information (Braille, large print, audiotape, etc.) should contact USDA's TARGET Center at (202) 720-2600 (voice and TDD).

To file a complaint of discrimination, write to USDA, Director, Office of Civil Rights, 1400 Independence Avenue, S.W., Washington, D.C. 20250-9410, or call (800) 795-3272 (voice) or (202) 720-6382 (TDD). USDA is an equal opportunity provider and employer.