



NASS

FACT FINDERS FOR AGRICULTURE
UNITED STATES DEPARTMENT OF AGRICULTURE

Washington, D.C.

Cattle On Feed

Released March 23, 2007, by the National Agricultural Statistics Service (NASS), Agricultural Statistics Board, U.S. Department of Agriculture. For information on *Cattle on Feed* call Mike Miller at (202) 720-3040, office hours 7:30 a.m. to 4:00 p.m. ET.

U.S. Cattle on Feed Down 4 Percent

Cattle and calves on feed for slaughter market in the United States for feedlots with capacity of 1,000 or more head totaled 11.6 million head on March 1, 2007. The inventory was 4 percent below March 1, 2006 but 4 percent above March 1, 2005.

Placements in feedlots during February totaled 1.66 million, 4 percent above 2006 and 9 percent above 2005. Net placements were 1.58 million. During February, placements of cattle and calves weighing less than 600 pounds were 325,000, 600-699 pounds were 334,000, 700-799 pounds were 505,000, and 800 pounds and greater were 495,000.

Marketings of fed cattle during February totaled 1.71 million, 7 percent above 2006 and 5 percent above 2005.

Other disappearance totaled 75,000 during February, 3 percent above 2006 but 3 percent below 2005.

**Cattle on Feed: Number on Feed, Placements, Marketings, and
Other Disappearance, 1,000+ Capacity Feedlots,
United States, March 1, 2005-2007**

Item	Number			2007 as % of	
	2005	2006	2007	2005	2006
	<i>1,000 Head</i>	<i>1,000 Head</i>	<i>1,000 Head</i>	<i>Percent</i>	<i>Percent</i>
On Feed Feb 1 ¹	11,342	12,110	11,726	103	97
Placed on Feed During Feb	1,523	1,588	1,659	109	104
Fed Cattle Marketed During Feb	1,634	1,602	1,711	105	107
Other Disappearance During Feb ²	77	73	75	97	103
On Feed Mar 1 ¹	11,154	12,023	11,599	104	96

¹ Cattle and calves on feed are animals for slaughter market being fed a ration of grain or other concentrates and are expected to produce a carcass that will grade select or better.

² Includes death loss, movement from feedlots to pasture, and shipments to other feedlots for further feeding.

**Cattle on Feed: Number on Feed, Placements, Marketings, and
Other Disappearance, 1,000+ Capacity Feedlots,
United States, February 1, 2005-2007**

Item	Number			2007 as % of	
	2005	2006	2007	2005	2006
	<i>1,000 Head</i>	<i>1,000 Head</i>	<i>1,000 Head</i>	<i>Percent</i>	<i>Percent</i>
On Feed Jan 1 ¹	11,299	11,804	11,974	106	101
Placed on Feed During Jan	1,888	2,199	1,690	90	77
Fed Cattle Marketed During Jan	1,772	1,810	1,841	104	102
Other Disappearance During Jan ²	73	83	97	133	117
On Feed Feb 1 ¹	11,342	12,110	11,726	103	97

¹ Cattle and calves on feed are animals for slaughter market being fed a ration of grain or other concentrates and are expected to produce a carcass that will grade select or better.

² Includes death loss, movement from feedlots to pasture, and shipments to other feedlots for further feeding.

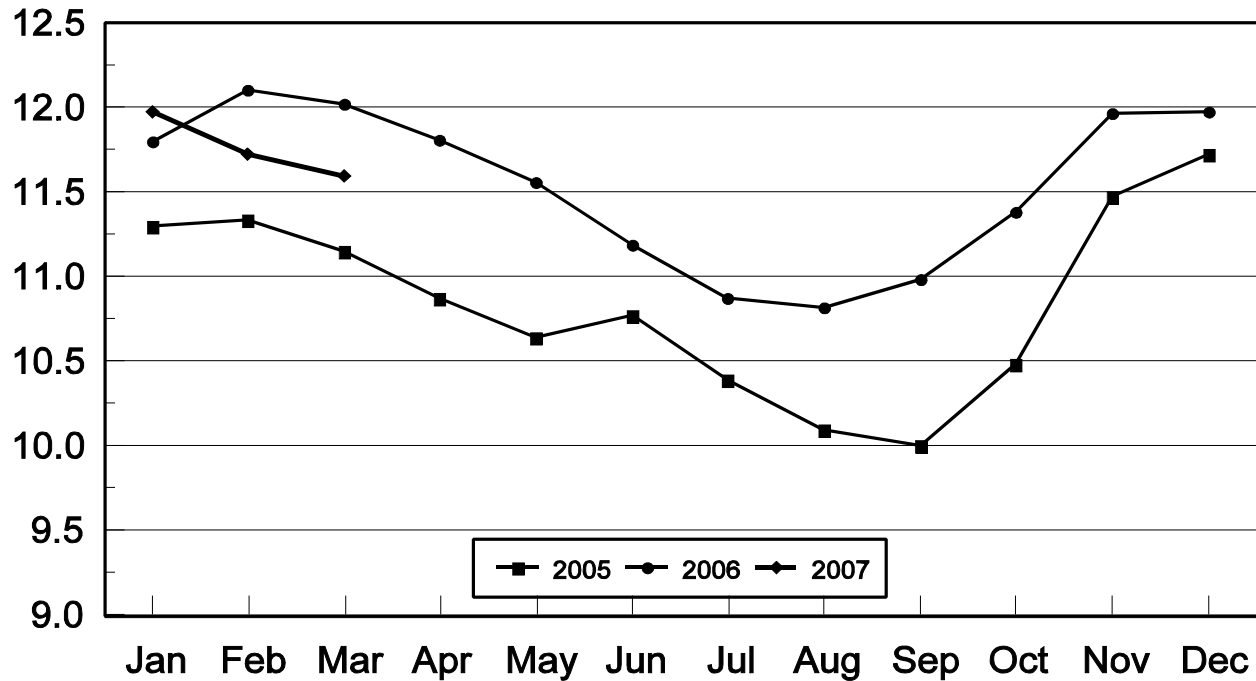
**Cattle on Feed: Number on Feed, 1,000+ Capacity Feedlots,
by Month, State, and United States 2006-2007 ¹**

State	Mar 1, 2006	Feb 1, 2007	Mar 1, 2007		
			Number	as % of 2006	as % of Feb
	<i>1,000 Head</i>	<i>1,000 Head</i>	<i>1,000 Head</i>	<i>Percent</i>	<i>Percent</i>
AZ	351	334	329	94	99
CA	550	540	530	96	98
CO	1,090	1,040	1,010	93	97
ID	255	255	250	98	98
IA	520	530	530	102	100
KS	2,610	2,430	2,420	93	100
NE	2,450	2,540	2,510	102	99
NM	143	135	130	91	96
OK	365	350	350	96	100
SD	210	230	230	110	100
TX	3,010	2,800	2,790	93	100
WA	154	177	170	110	96
Oth Sts	315	365	350	111	96
US	12,023	11,726	11,599	96	99

¹ Cattle and calves on feed are animals for slaughter market being fed a ration of grain or other concentrates and are expected to produce a carcass that will grade select or better.

United States Cattle on Feed 1,000+ Capacity Feedlots

Million Head

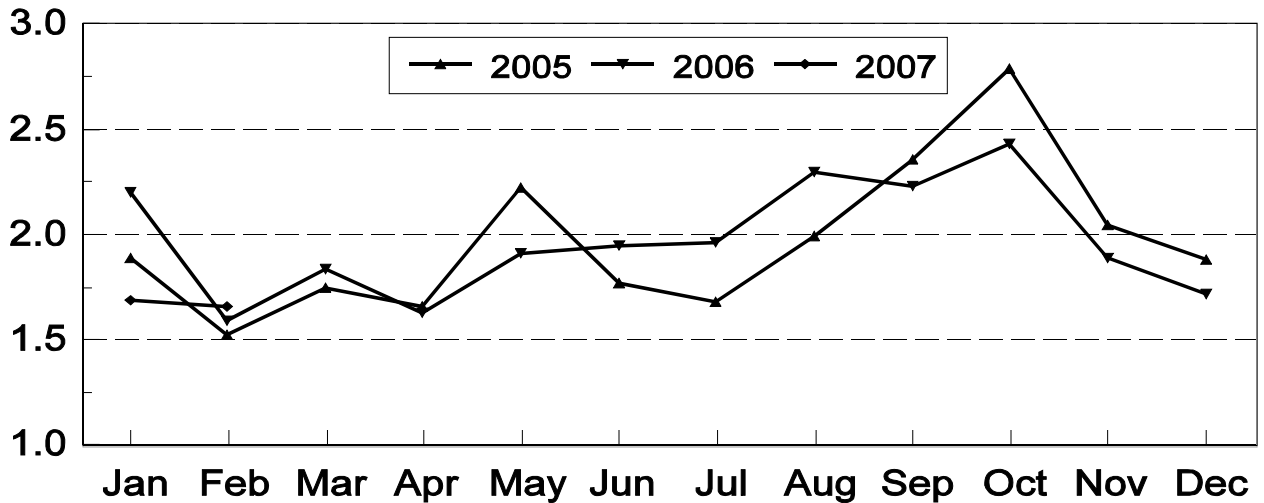


**Cattle on Feed: Number Placed on Feed, 1,000+ Capacity Feedlots,
by Month, State, and United States 2006-2007**

State	During Feb 2006	During Jan 2007	During Feb 2007		
			Number	as % of 2006	as % of Jan
	<i>1,000 Head</i>	<i>1,000 Head</i>	<i>1,000 Head</i>	<i>Percent</i>	<i>Percent</i>
AZ	31	33	24	77	73
CA	63	64	60	95	94
CO	140	155	140	100	90
ID	32	43	39	122	91
IA	60	76	64	107	84
KS	410	365	395	96	108
NE	330	420	360	109	86
NM	13	8	14	108	175
OK	49	50	59	120	118
SD	33	50	43	130	86
TX	360	340	390	108	115
WA	25	27	25	100	93
Oth Sts	42	59	46	110	78
US	1,588	1,690	1,659	104	98

**United States Cattle on Feed
1,000+ Capacity Feedlots Number Placed**

Million Head



**Cattle on Feed: Number Placed on Feed by Weight Group, 1,000+ Capacity
Feedlots, by Month, State, and United States, 2006-2007**

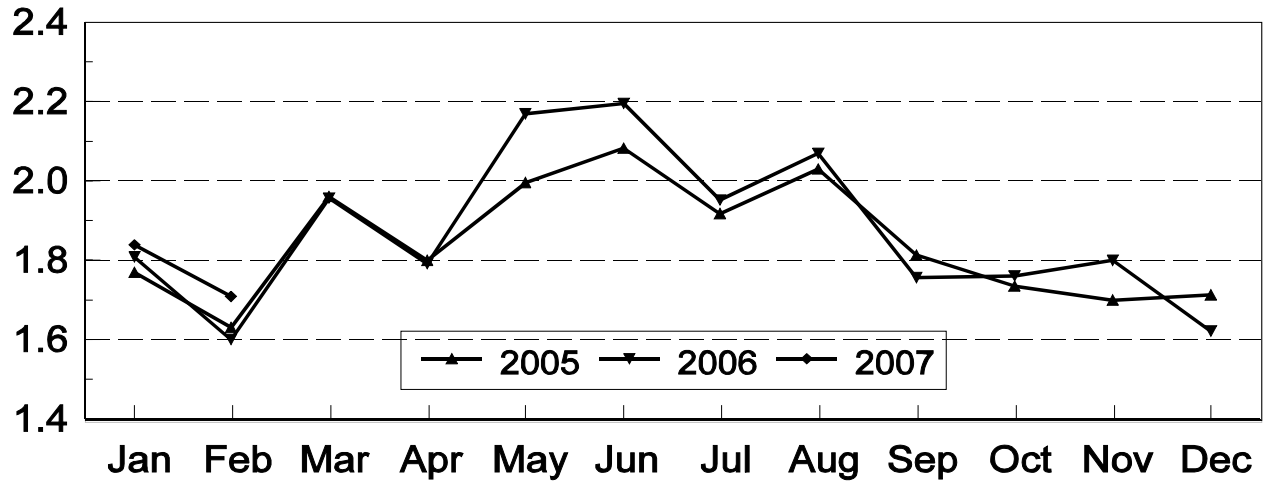
State	During February									
	Under 600		600-699		700-799		800 Plus		Total	
	2006	2007	2006	2007	2006	2007	2006	2007	2006	2007
	<i>1,000 Head</i>	<i>1,000 Head</i>	<i>1,000 Head</i>	<i>1,000 Head</i>	<i>1,000 Head</i>	<i>1,000 Head</i>	<i>1,000 Head</i>	<i>1,000 Head</i>	<i>1,000 Head</i>	<i>1,000 Head</i>
CO	20	15	30	30	50	45	40	50	140	140
KS	60	50	85	85	145	145	120	115	410	395
NE	55	40	60	60	105	110	110	150	330	360
TX	110	100	70	100	120	120	60	70	360	390
Oth Sts	110	120	55	59	85	85	98	110	348	374
US	355	325	300	334	505	505	428	495	1,588	1,659
	During January									
	Under 600		600-699		700-799		800 Plus		Total	
	2006	2007	2006	2007	2006	2007	2006	2007	2006	2007
	<i>1,000 Head</i>	<i>1,000 Head</i>	<i>1,000 Head</i>	<i>1,000 Head</i>	<i>1,000 Head</i>	<i>1,000 Head</i>	<i>1,000 Head</i>	<i>1,000 Head</i>	<i>1,000 Head</i>	<i>1,000 Head</i>
CO	35	15	45	35	85	55	60	50	225	155
KS	95	50	125	110	220	125	130	80	570	365
NE	50	45	80	85	150	150	145	140	425	420
TX	210	85	115	85	150	120	65	50	540	340
Oth Sts	140	125	82	75	97	95	120	115	439	410
US	530	320	447	390	702	545	520	435	2,199	1,690

**Cattle on Feed: Number Marketed, 1,000+ Capacity Feedlots,
by Month, State, and United States 2006-2007**

State	During Feb 2006	During Jan 2007	During Feb 2007		
			Number	as % of 2006	as % of Jan
			<i>1,000 Head</i>	<i>Percent</i>	<i>Percent</i>
AZ	24	32	28	117	88
CA	56	72	67	120	93
CO	155	200	160	103	80
ID	38	47	43	113	91
IA	58	64	63	109	98
KS	360	445	380	106	85
NE	360	405	380	106	94
NM	14	8	18	129	225
OK	56	48	58	104	121
SD	29	42	41	141	98
TX	370	390	385	104	99
WA	22	33	31	141	94
Oth Sts	60	55	57	95	104
US	1,602	1,841	1,711	107	93

United States Cattle on Feed 1,000+ Capacity Feedlots Number Marketed

Million Head



**Cattle on Feed: Other Disappearance, 1,000+ Capacity Feedlots,
by Month, State, and United States 2006-2007¹**

State	During Feb 2006 <i>1,000 Head</i>	During Jan 2007 <i>1,000 Head</i>	During Feb 2007		
			Number <i>1,000 Head</i>	as % of 2006 <i>Percent</i>	as % of Jan <i>Percent</i>
AZ	2	1	1	50	100
CA	7	2	3	43	150
CO	5	15	10	200	67
ID	4	1	1	25	100
IA	2	2	1	50	50
KS	20	30	25	125	83
NE	10	15	10	100	67
NM	2	1	1	50	100
OK	3	2	1	33	50
SD	4	3	2	50	67
TX	10	20	15	150	75
WA	2	1	1	50	100
Oth Sts	2	4	4	200	100
US	73	97	75	103	77

¹ Includes death loss, movement from feedlots to pasture, and shipments to other feedlots for further feeding.

Terms and Definitions of Cattle on Feed Estimates

Cattle on feed are animals being fed a ration of grain, silage, hay and/or protein supplement for slaughter market that are expected to produce a carcass that will grade select or better. It excludes cattle being "backgrounded only" for later sale as feeders or later placement in another feedlot.

Placements are cattle put into a feedlot, fed a ration which will produce a carcass that will grade select or better, and are intended for the slaughter market.

Marketings are cattle shipped out of feedlots to a slaughter market.

Other disappearance includes death loss, movement from feedlots to pasture, and shipments to other feedlots for further feeding.

Reliability of Cattle on Feed Estimates

Survey Procedures: During January and July all known feedlots in the U.S. with capacity of 1,000 or more head are surveyed to provide data for cattle on feed estimates. During the other months, all known feedlots from 17 States are surveyed. The 17 States account for 98 percent of the cattle on feed in feedlots with capacity of 1,000 or more head.

Estimating Procedures: These cattle on feed estimates were prepared by the Agricultural Statistics Board after reviewing recommendations and analysis submitted by each State office. Regional and State survey data were reviewed for reasonableness with each other and with estimates from the previous month when setting the current estimates.

Revision Policy: Revisions to previous estimates are made to improve month to month relationships. Estimates for the previous month are subject to revision in all States each month when current estimates are made. In February, all monthly estimates for the previous year, and the number of feedlots and annual marketings from two years ago are reviewed and subject to revisions. The reviews are primarily based on slaughter data, state check-off or brand data, and any other data that may have been received after the original estimate was made. Estimates will also be reviewed after data from the Census of Agriculture are available. No revisions will be made after that date and estimates become final.

Reliability: Since all 1,000+ capacity cattle on feed operators in every State are not included in the monthly survey, survey estimates are subject to sampling variability. Survey results are also subject to non-sampling errors such as omissions, duplications, and mistakes in reporting, recording, and processing the data. The effects of these errors cannot be measured directly. They are minimized through rigid quality controls in the data collection process and through a careful review of all reported data for consistency and reasonableness.

To assist users in evaluating the reliability of estimates in this report, the "**Root Mean Square Error**" is shown for selected items in the following table. The "Root Mean Square Error" is a statistical measure based on past performance and is computed using the differences between first and latest estimates. The "Root Mean Square Error" for cattle on feed inventory estimates over the past 10 years is .1 percent. This means that chances are 2 out of 3 that the final estimate will not be above or below the current estimate of 11.6 million head by more than .1 percent. Chances are 9 out of 10 that the difference will not exceed .2 percent.

The following table also shows a 10 year record of the range of differences between first and latest estimates for selected items. Using estimates of number on feed as an example, changes between the first estimate and the latest estimate during the past 10 years have averaged 7,000 head, ranging from 0

to 25,000 head. During this period the initial estimate has been below the final estimate 5 times, and above the final estimate 0 times. This does not imply that the initial estimate is likely to understate or overstate final inventory.

Reliability of U.S. March 1 Cattle on Feed Estimates ¹

Item	Root Mean Square Error	90% Confidence Level		Difference Between First and Final Estimates ¹			Number of Years	
		Percent	(000) Head	Average	Smallest	Largest	First Above Final	First Below Final
	<i>Percent</i>	<i>Percent</i>	<i>1,000 Head</i>	<i>1,000 Head</i>	<i>1,000 Head</i>	<i>1,000 Head</i>	<i>Number</i>	<i>Number</i>
Number on Feed	0.1	0.2	22.6	7	0	25	0	5
Placements	1.1	2.0	33.7	12	0	42	2	5
Marketings	0.9	1.6	27.4	10	0	40	1	6

¹ Based on data for the past 10 years.

Information Contacts

Listed below are the commodity specialists in the Livestock Branch of the National Agricultural Statistics Service to contact for additional information.

- Dan Kerestes, Chief Livestock Branch (202) 720-3570
- William Weaver, Head, Livestock Section (202) 720-3570
 - Bruce Boess - Hogs and Pigs (202) 720-3106
 - Shawn Clark - Dairy Products (202) 690-3236
 - Jason Hardegree - Milk Production and Milk Cows (202) 720-3278
 - Scott Hollis - Sheep & Lambs, Goats (202) 720-4751
 - Mike Miller - Cattle, Cattle on Feed (202) 720-3040
 - Benita Hodge - Livestock Slaughter (515) 284-4340
 - Charmaine Wilson - Dairy Products Prices (202) 690-2168

ACCESS TO REPORTS!!

For your convenience, there are several ways to obtain NASS reports, data products, and services:

INTERNET ACCESS

All NASS reports are available free of charge on the worldwide Internet. For access, connect to the Internet and go to the NASS Home Page at: www.nass.usda.gov.

E-MAIL SUBSCRIPTION

All NASS reports are available by subscription free of charge direct to your e-mail address. Starting with the NASS Home Page at www.nass.usda.gov, under the right navigation, *Receive reports by Email*, click on **National** or **State**. Follow the instructions on the screen.

PRINTED REPORTS OR DATA PRODUCTS

CALL OUR TOLL-FREE ORDER DESK: 800-999-6779 (U.S. and Canada)
Other areas, please call 703-605-6220 FAX: 703-605-6900
(Visa, MasterCard, check, or money order acceptable for payment.)

ASSISTANCE

For **assistance** with general agricultural statistics or further information about NASS or its products or services, contact the **Agricultural Statistics Hotline** at **800-727-9540**, 7:30 a.m. to 4:00 p.m. ET, or e-mail: nass@nass.usda.gov.

The U.S. Department of Agriculture (USDA) prohibits discrimination in all its programs and activities on the basis of race, color, national origin, age, disability, and where applicable, sex, marital status, familial status, parental status, religion, sexual orientation, genetic information, political beliefs, reprisal, or because all or a part of an individual's income is derived from any public assistance program. (Not all prohibited bases apply to all programs.) Persons with disabilities who require alternative means for communication of program information (Braille, large print, audiotape, etc.) should contact USDA's TARGET Center at (202) 720-2600 (voice and TDD).

To file a complaint of discrimination, write to USDA, Director, Office of Civil Rights, 1400 Independence Avenue, S.W., Washington, D.C. 20250-9410, or call (800) 795-3272 (voice) or (202) 720-6382 (TDD). USDA is an equal opportunity provider and employer.