



NASS

FACT FINDERS FOR AGRICULTURE
UNITED STATES DEPARTMENT OF AGRICULTURE

Washington, D.C.

Cattle On Feed

Released April 20, 2007, by the National Agricultural Statistics Service (NASS), Agricultural Statistics Board, U.S. Department of Agriculture. For information on *Cattle on Feed* call Mike Miller at (202) 720-3040, office hours 7:30 a.m. to 4:00 p.m. ET.

U.S. Cattle on Feed Down 1 Percent

Cattle and calves on feed for slaughter market in the United States for feedlots with capacity of 1,000 or more head totaled 11.6 million head on April 1, 2007. The inventory was 1 percent below April 1, 2006 but 7 percent above April 1, 2005. This is the second highest April 1 inventory since the series began in 1996. The inventory included 7.43 million steers and steer calves, down 4 percent from the previous year. This group accounted for 64 percent of the total inventory. Heifers and heifer calves accounted for 4.14 million head, up 4 percent from 2006.

Placements in feedlots during March totaled 1.97 million, 7 percent above 2006 and 12 percent above 2005. Net placements were 1.89 million. During March, placements of cattle and calves weighing less than 600 pounds were 350,000, 600-699 pounds were 375,000, 700-799 pounds were 640,000, and 800 pounds and greater were 600,000.

Marketings of fed cattle during March totaled 1.85 million, down 6 percent from 2006 and 6 percent below 2005.

Other disappearance totaled 72,000 during March, 20 percent below 2006 but 6 percent above 2005.

**Cattle on Feed: Number on Feed, Placements, Marketings, and
Other Disappearance, 1,000+ Capacity Feedlots,
United States, April 1, 2005-2007**

Item	Number			2007 as % of	
	2005	2006	2007	2005	2006
	<i>1,000 Head</i>	<i>1,000 Head</i>	<i>1,000 Head</i>	<i>Percent</i>	<i>Percent</i>
On Feed Mar 1 ¹	11,154	12,023	11,599	104	96
Placed on Feed During Mar	1,750	1,837	1,965	112	107
Fed Cattle Marketed During Mar	1,963	1,958	1,848	94	94
Other Disappearance During Mar ²	68	90	72	106	80
On Feed Apr 1 ¹	10,873	11,812	11,644	107	99

¹ Cattle and calves on feed are animals for slaughter market being fed a ration of grain or other concentrates and are expected to produce a carcass that will grade select or better.

² Includes death loss, movement from feedlots to pasture, and shipments to other feedlots for further feeding.

**Cattle on Feed: Number on Feed, Placements, Marketings, and
Other Disappearance, 1,000+ Capacity Feedlots,
United States, March 1, 2005-2007**

Item	Number			2007 as % of	
	2005	2006	2007	2005	2006
	<i>1,000 Head</i>	<i>1,000 Head</i>	<i>1,000 Head</i>	<i>Percent</i>	<i>Percent</i>
On Feed Feb 1 ¹	11,342	12,110	11,726	103	97
Placed on Feed During Feb	1,523	1,588	1,659	109	104
Fed Cattle Marketed During Feb	1,634	1,602	1,711	105	107
Other Disappearance During Feb ²	77	73	75	97	103
On Feed Mar 1 ¹	11,154	12,023	11,599	104	96

¹ Cattle and calves on feed are animals for slaughter market being fed a ration of grain or other concentrates and are expected to produce a carcass that will grade select or better.

² Includes death loss, movement from feedlots to pasture, and shipments to other feedlots for further feeding.

**Cattle on Feed: Number on Feed by Class, 1,000+ Capacity Feedlots,
United States, April 1, 2005-2007**

Item	Number			2007 as % of	
	2005	2006	2007	2005	2006
	<i>1,000 Head</i>	<i>1,000 Head</i>	<i>1,000 Head</i>	<i>Percent</i>	<i>Percent</i>
Class on Feed Apr 1					
Steers and Steer Calves	6,992	7,740	7,433	106	96
Heifers and Heifer Calves	3,803	3,997	4,142	109	104
Cows and Bulls	78	75	69	88	92

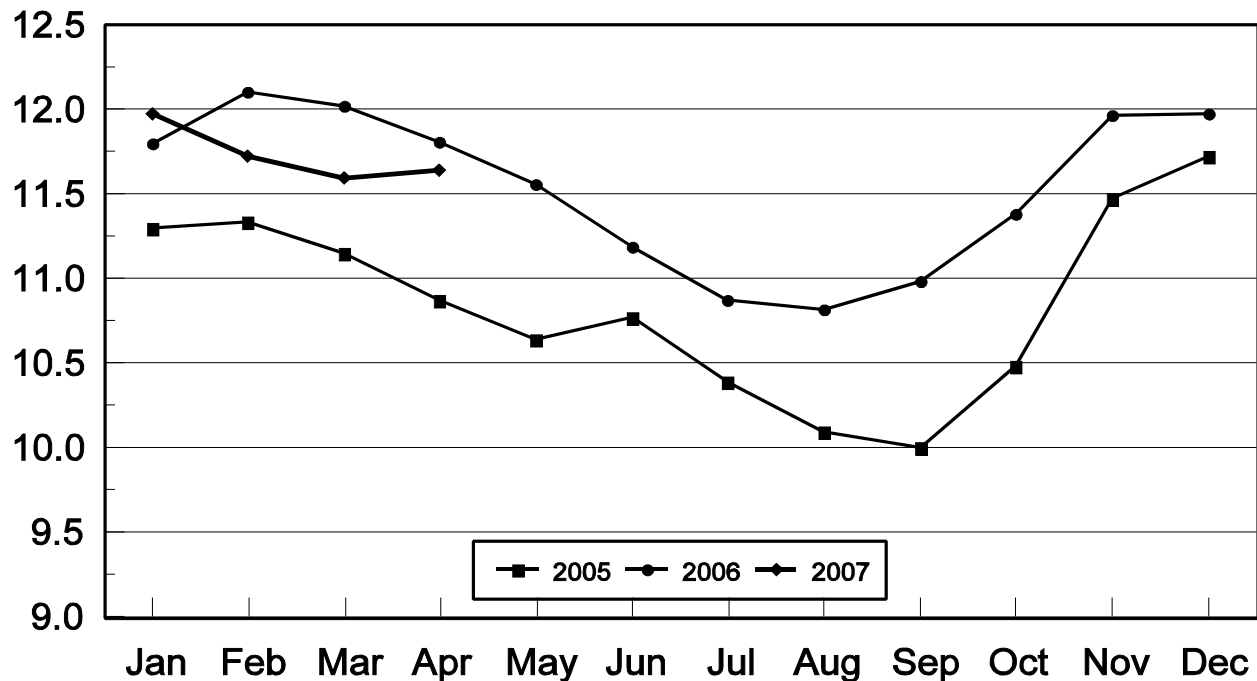
**Cattle on Feed: Number on Feed, 1,000+ Capacity Feedlots,
by Month, State, and United States 2006-2007 ¹**

State	Apr 1, 2006	Mar 1, 2007	Apr 1, 2007		
			Number	as % of 2006	as % of Mar
	<i>1,000 Head</i>	<i>1,000 Head</i>	<i>1,000 Head</i>	<i>Percent</i>	<i>Percent</i>
AZ	351	329	340	97	103
CA	535	530	530	99	100
CO	1,070	1,010	1,020	95	101
ID	250	250	245	98	98
IA	500	530	530	106	100
KS	2,590	2,420	2,480	96	102
NE	2,400	2,510	2,480	103	99
NM	139	130	131	94	101
OK	360	350	350	97	100
SD	210	230	230	110	100
TX	2,940	2,790	2,800	95	100
WA	152	170	163	107	96
Oth Sts	315	350	345	110	99
US	11,812	11,599	11,644	99	100

¹ Cattle and calves on feed are animals for slaughter market being fed a ration of grain or other concentrates and are expected to produce a carcass that will grade select or better.

United States Cattle on Feed 1,000+ Capacity Feedlots

Million Head

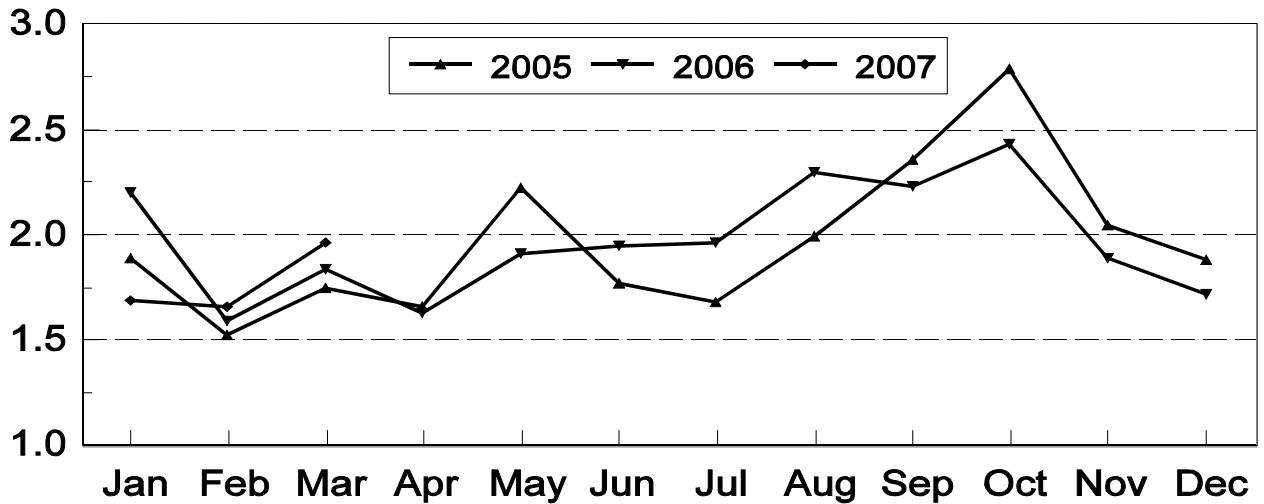


**Cattle on Feed: Number Placed on Feed, 1,000+ Capacity Feedlots,
by Month, State, and United States 2006-2007**

State	During Mar 2006	During Feb 2007	During Mar 2007		
			Number	as % of 2006	as % of Feb
	<i>1,000 Head</i>	<i>1,000 Head</i>	<i>1,000 Head</i>	<i>Percent</i>	<i>Percent</i>
AZ	30	24	46	153	192
CA	59	60	68	115	113
CO	155	140	165	106	118
ID	42	39	38	90	97
IA	55	64	72	131	113
KS	480	395	510	106	129
NE	335	360	350	104	97
NM	21	14	19	90	136
OK	68	59	68	100	115
SD	36	43	40	111	93
TX	485	390	520	107	133
WA	26	25	26	100	104
Oth Sts	45	46	43	96	93
US	1,837	1,659	1,965	107	118

United States Cattle on Feed 1,000+ Capacity Feedlots Number Placed

Million Head



**Cattle on Feed: Number Placed on Feed by Weight Group, 1,000+ Capacity
Feedlots, by Month, State, and United States, 2006-2007**

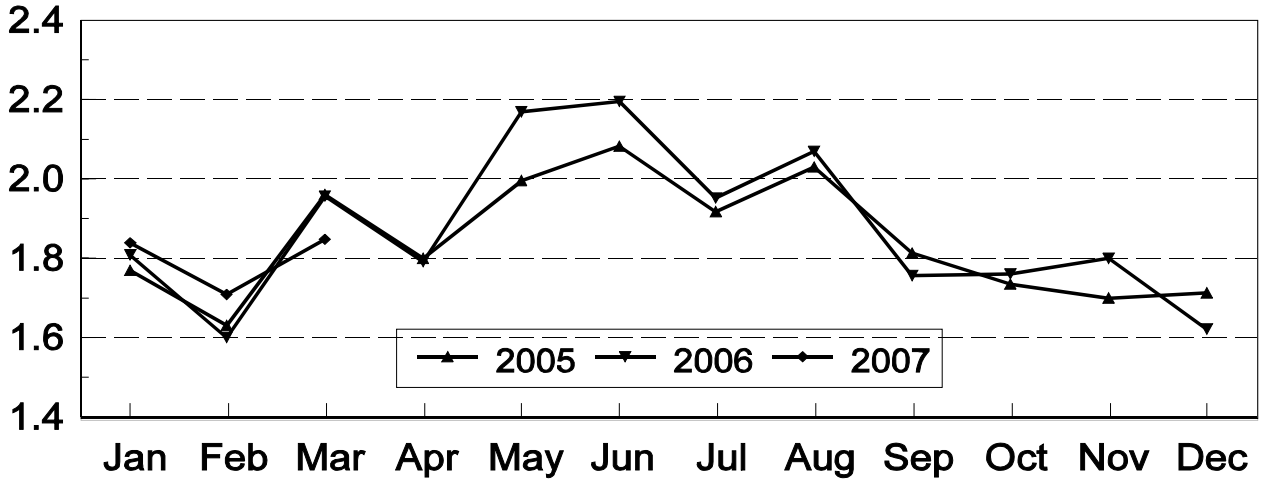
State	During March									
	Under 600		600-699		700-799		800 Plus		Total	
	2006	2007	2006	2007	2006	2007	2006	2007	2006	2007
	<i>1,000 Head</i>	<i>1,000 Head</i>	<i>1,000 Head</i>	<i>1,000 Head</i>	<i>1,000 Head</i>	<i>1,000 Head</i>	<i>1,000 Head</i>	<i>1,000 Head</i>	<i>1,000 Head</i>	<i>1,000 Head</i>
CO	25	20	30	30	60	50	40	65	155	165
KS	70	70	80	115	165	170	165	155	480	510
NE	50	40	50	50	90	110	145	150	335	350
TX	120	90	120	120	165	200	80	110	485	520
Oth Sts	115	130	62	60	85	110	120	120	382	420
US	380	350	342	375	565	640	550	600	1,837	1,965
	During February									
	Under 600		600-699		700-799		800 Plus		Total	
	2006	2007	2006	2007	2006	2007	2006	2007	2006	2007
	<i>1,000 Head</i>	<i>1,000 Head</i>	<i>1,000 Head</i>	<i>1,000 Head</i>	<i>1,000 Head</i>	<i>1,000 Head</i>	<i>1,000 Head</i>	<i>1,000 Head</i>	<i>1,000 Head</i>	<i>1,000 Head</i>
CO	20	15	30	30	50	45	40	50	140	140
KS	60	50	85	85	145	145	120	115	410	395
NE	55	40	60	60	105	110	110	150	330	360
TX	110	100	70	100	120	120	60	70	360	390
Oth Sts	110	120	55	59	85	85	98	110	348	374
US	355	325	300	334	505	505	428	495	1,588	1,659

**Cattle on Feed: Number Marketed, 1,000+ Capacity Feedlots,
by Month, State, and United States 2006-2007**

State	During Mar 2006	During Feb 2007	During Mar 2007		
			Number	as % of 2006	as % of Feb
			<i>1,000 Head</i>	<i>Percent</i>	<i>Percent</i>
AZ	28	28	33	118	118
CA	68	67	65	96	97
CO	165	160	145	88	91
ID	45	43	42	93	98
IA	73	63	70	96	111
KS	470	380	430	91	113
NE	370	380	370	100	97
NM	23	18	17	74	94
OK	72	58	67	93	116
SD	35	41	37	106	90
TX	540	385	495	92	129
WA	27	31	32	119	103
Oth Sts	42	57	45	107	79
US	1,958	1,711	1,848	94	108

United States Cattle on Feed 1,000+ Capacity Feedlots Number Marketed

Million Head



**Cattle on Feed: Other Disappearance, 1,000+ Capacity Feedlots,
by Month, State, and United States 2006-2007¹**

State	During Mar 2006	During Feb 2007	During Mar 2007		
			Number	as % of 2006	as % of Feb
	<i>1,000 Head</i>	<i>1,000 Head</i>	<i>1,000 Head</i>	<i>Percent</i>	<i>Percent</i>
AZ	2	1	2	100	200
CA	6	3	3	50	100
CO	10	10	10	100	100
ID	2	1	1	50	100
IA	2	1	2	100	200
KS	30	25	20	67	80
NE	15	10	10	67	100
NM	2	1	1	50	100
OK	1	1	1	100	100
SD	1	2	3	300	150
TX	15	15	15	100	100
WA	1	1	1	100	100
Oth Sts	3	4	3	100	75
US	90	75	72	80	96

¹ Includes death loss, movement from feedlots to pasture, and shipments to other feedlots for further feeding.

**Cattle on Feed: Number on Feed by Class, 1,000+ Capacity Feedlots,
by Quarter, State, and United States, 2006-2007**

State	Steers & Steer Calves			Heifers & Heifer Calves			Cows and Bulls		
	Apr 1, 2006	Jan 1, 2007	Apr 1, 2007	Apr 1, 2006	Jan 1, 2007	Apr 1, 2007	Apr 1, 2006	Jan 1, 2007	Apr 1, 2007
	<i>1,000 Head</i>	<i>1,000 Head</i>	<i>1,000 Head</i>	<i>1,000 Head</i>	<i>1,000 Head</i>	<i>1,000 Head</i>	<i>1,000 Head</i>	<i>1,000 Head</i>	<i>1,000 Head</i>
AZ	342	331	339	9	3	1	0	0	0
CA	500	495	485	35	55	45	0	0	0
CO	740	710	660	320	380	355	10	10	5
ID	158	148	146	90	102	96	2	10	3
IA	355	350	350	144	169	179	1	1	1
KS	1,460	1,360	1,340	1,110	1,155	1,115	20	25	25
NE	1,480	1,580	1,520	900	940	950	20	20	10
NM	77	82	81	62	54	50	0	0	0
OK	245	230	235	115	120	115	0	0	0
SD	115	115	130	79	85	82	16	25	18
TX	1,940	1,800	1,780	999	1,067	1,017	1	3	3
WA	88	103	87	62	80	75	2	1	1
Oth Sts	240	270	280	72	93	62	3	2	3
US	7,740	7,574	7,433	3,997	4,303	4,142	75	97	69

Terms and Definitions of Cattle on Feed Estimates

Cattle on feed are animals being fed a ration of grain, silage, hay and/or protein supplement for slaughter market that are expected to produce a carcass that will grade select or better. It excludes cattle being "backgrounded only" for later sale as feeders or later placement in another feedlot.

Placements are cattle put into a feedlot, fed a ration which will produce a carcass that will grade select or better, and are intended for the slaughter market.

Marketings are cattle shipped out of feedlots to a slaughter market.

Other disappearance includes death loss, movement from feedlots to pasture, and shipments to other feedlots for further feeding.

Reliability of Cattle on Feed Estimates

Survey Procedures: During January and July all known feedlots in the U.S. with capacity of 1,000 or more head are surveyed to provide data for cattle on feed estimates. During the other months, all known feedlots from 17 States are surveyed. The 17 States account for 98 percent of the cattle on feed in feedlots with capacity of 1,000 or more head.

Estimating Procedures: These cattle on feed estimates were prepared by the Agricultural Statistics Board after reviewing recommendations and analysis submitted by each State office. Regional and State survey data were reviewed for reasonableness with each other and with estimates from the previous month when setting the current estimates.

Revision Policy: Revisions to previous estimates are made to improve month to month relationships. Estimates for the previous month are subject to revision in all States each month when current estimates are made. In February, all monthly estimates for the previous year, and the number of feedlots and annual marketings from two years ago are reviewed and subject to revisions. The reviews are primarily based on slaughter data, state check-off or brand data, and any other data that may have been received after the original estimate was made. Estimates will also be reviewed after data from the Census of Agriculture are available. No revisions will be made after that date and estimates become final.

Reliability: Since all 1,000+ capacity cattle on feed operators in every State are not included in the monthly survey, survey estimates are subject to sampling variability. Survey results are also subject to non-sampling errors such as omissions, duplications, and mistakes in reporting, recording, and processing the data. The effects of these errors cannot be measured directly. They are minimized through rigid quality controls in the data collection process and through a careful review of all reported data for consistency and reasonableness.

To assist users in evaluating the reliability of estimates in this report, the "**Root Mean Square Error**" is shown for selected items in the following table. The "Root Mean Square Error" is a statistical measure based on past performance and is computed using the differences between first and latest estimates. The "Root Mean Square Error" for cattle on feed inventory estimates over the past 10 years is .1 percent. This means that chances are 2 out of 3 that the final estimate will not be above or below the current estimate of 11.6 million head by more than .1 percent. Chances are 9 out of 10 that the difference will not exceed .1 percent.

The following table also shows a 10 year record of the range of differences between first and latest estimates for selected items. Using estimates of number on feed as an example, changes between the first estimate and the latest estimate during the past 10 years have averaged 7,000 head, ranging from 0

to 15,000 head. During this period the initial estimate has been below the final estimate 7 times, and above the final estimate 0 times. This does not imply that the initial estimate is likely to understate or overstate final inventory.

Reliability of U.S. April 1 Cattle on Feed Estimates ¹

Item	Root Mean Square Error	90% Confidence Level		Difference Between First and Final Estimates ¹			Number of Years	
		Percent	(000) Head	Average	Smallest	Largest	First Above Final	First Below Final
	<i>Percent</i>	<i>Percent</i>	<i>1,000 Head</i>	<i>1,000 Head</i>	<i>1,000 Head</i>	<i>1,000 Head</i>	<i>Number</i>	<i>Number</i>
Number on Feed	0.1	0.1	17.3	7	0	15	0	7
Placements	0.4	0.8	16.2	7	0	15	3	5
Marketings	0.3	0.5	9.7	4	0	10	2	4

¹ Based on data for the past 10 years.

Information Contacts

Listed below are the commodity specialists in the Livestock Branch of the National Agricultural Statistics Service to contact for additional information.

Dan Kerestes, Chief, Livestock Branch (202) 720-3570

Livestock Section

William Weaver, Head, Livestock Section (202) 720-3570
 Bruce Boess - Hogs and Pigs (202) 720-3106
 Shawn Clark - Dairy Products (202) 690-3236
 Jason Hardegree - Milk Production and Milk Cows (202) 720-3278
 Scott Hollis - Sheep & Lambs, Goats (202) 720-4751
 Mike Miller - Cattle, Cattle on Feed (202) 720-3040
 Benita Hodge - Livestock Slaughter (515) 284-4340
 Charmaine Wilson - Dairy Products Prices (202) 690-2168

ACCESS TO REPORTS!!

For your convenience, there are several ways to obtain NASS reports, data products, and services:

INTERNET ACCESS

All NASS reports are available free of charge on the worldwide Internet. For access, connect to the Internet and go to the NASS Home Page at: www.nass.usda.gov.

E-MAIL SUBSCRIPTION

All NASS reports are available by subscription free of charge direct to your e-mail address. Starting with the NASS Home Page at www.nass.usda.gov, under the right navigation, *Receive reports by Email*, click on **National** or **State**. Follow the instructions on the screen.

PRINTED REPORTS OR DATA PRODUCTS

CALL OUR TOLL-FREE ORDER DESK: 800-999-6779 (U.S. and Canada)
Other areas, please call 703-605-6220 FAX: 703-605-6900
(Visa, MasterCard, check, or money order acceptable for payment.)

ASSISTANCE

For **assistance** with general agricultural statistics or further information about NASS or its products or services, contact the **Agricultural Statistics Hotline** at **800-727-9540**, 7:30 a.m. to 4:00 p.m. ET, or e-mail: nass@nass.usda.gov.

The U.S. Department of Agriculture (USDA) prohibits discrimination in all its programs and activities on the basis of race, color, national origin, age, disability, and where applicable, sex, marital status, familial status, parental status, religion, sexual orientation, genetic information, political beliefs, reprisal, or because all or a part of an individual's income is derived from any public assistance program. (Not all prohibited bases apply to all programs.) Persons with disabilities who require alternative means for communication of program information (Braille, large print, audiotape, etc.) should contact USDA's TARGET Center at (202) 720-2600 (voice and TDD).

To file a complaint of discrimination, write to USDA, Director, Office of Civil Rights, 1400 Independence Avenue, S.W., Washington, D.C. 20250-9410, or call (800) 795-3272 (voice) or (202) 720-6382 (TDD). USDA is an equal opportunity provider and employer.