



NASS

FACT FINDERS FOR AGRICULTURE
UNITED STATES DEPARTMENT OF AGRICULTURE

Washington, D.C.

Cattle On Feed

Released June 22, 2007, by the National Agricultural Statistics Service (NASS), Agricultural Statistics Board, U.S. Department of Agriculture. For information on *Cattle on Feed* call Mike Miller at (202) 720-3040, office hours 7:30 a.m. to 4:00 p.m. ET.

U.S. Cattle on Feed Up 1 Percent

Cattle and calves on feed for slaughter market in the United States for feedlots with capacity of 1,000 or more head totaled 11.3 million head on June 1, 2007. The inventory was 1 percent above June 1, 2006 and 5 percent above June 1, 2005. This is highest June 1 inventory since the series began in 1996.

Placements in feedlots during May totaled 2.16 million, 13 percent above 2006 but 3 percent below 2005. Net placements were 2.06 million. During May, placements of cattle and calves weighing less than 600 pounds were 420,000, 600-699 pounds were 374,000, 700-799 pounds were 645,000, and 800 pounds and greater were 720,000.

Marketings of fed cattle during May totaled 2.09 million, 3 percent below 2006 but 4 percent above 2005.

Other disappearance totaled 99,000 during May, 14 percent below 2006 but 3 percent above 2005.

**Cattle on Feed: Number on Feed, Placements, Marketings, and
Other Disappearance, 1,000+ Capacity Feedlots,
United States, June 1, 2005-2007**

Item	Number			2007 as % of	
	2005	2006	2007	2005	2006
	<i>1,000 Head</i>	<i>1,000 Head</i>	<i>1,000 Head</i>	<i>Percent</i>	<i>Percent</i>
On Feed May 1 ¹	10,641	11,559	11,297	106	98
Placed on Feed During May	2,223	1,903	2,159	97	113
Fed Cattle Marketed During May	1,997	2,160	2,085	104	97
Other Disappearance During May ²	96	115	99	103	86
On Feed Jun 1 ¹	10,771	11,187	11,272	105	101

¹ Cattle and calves on feed are animals for slaughter market being fed a ration of grain or other concentrates and are expected to produce a carcass that will grade select or better.

² Includes death loss, movement from feedlots to pasture, and shipments to other feedlots for further feeding.

**Cattle on Feed: Number on Feed, Placements, Marketings, and
Other Disappearance, 1,000+ Capacity Feedlots,
United States, May 1, 2005-2007**

Item	Number			2007 as % of	
	2005	2006	2007	2005	2006
	<i>1,000 Head</i>	<i>1,000 Head</i>	<i>1,000 Head</i>	<i>Percent</i>	<i>Percent</i>
On Feed Apr 1 ¹	10,873	11,812	11,644	107	99
Placed on Feed During Apr	1,660	1,619	1,573	95	97
Fed Cattle Marketed During Apr	1,801	1,785	1,821	101	102
Other Disappearance During Apr ²	91	87	99	109	114
On Feed May 1 ¹	10,641	11,559	11,297	106	98

¹ Cattle and calves on feed are animals for slaughter market being fed a ration of grain or other concentrates and are expected to produce a carcass that will grade select or better.

² Includes death loss, movement from feedlots to pasture, and shipments to other feedlots for further feeding.

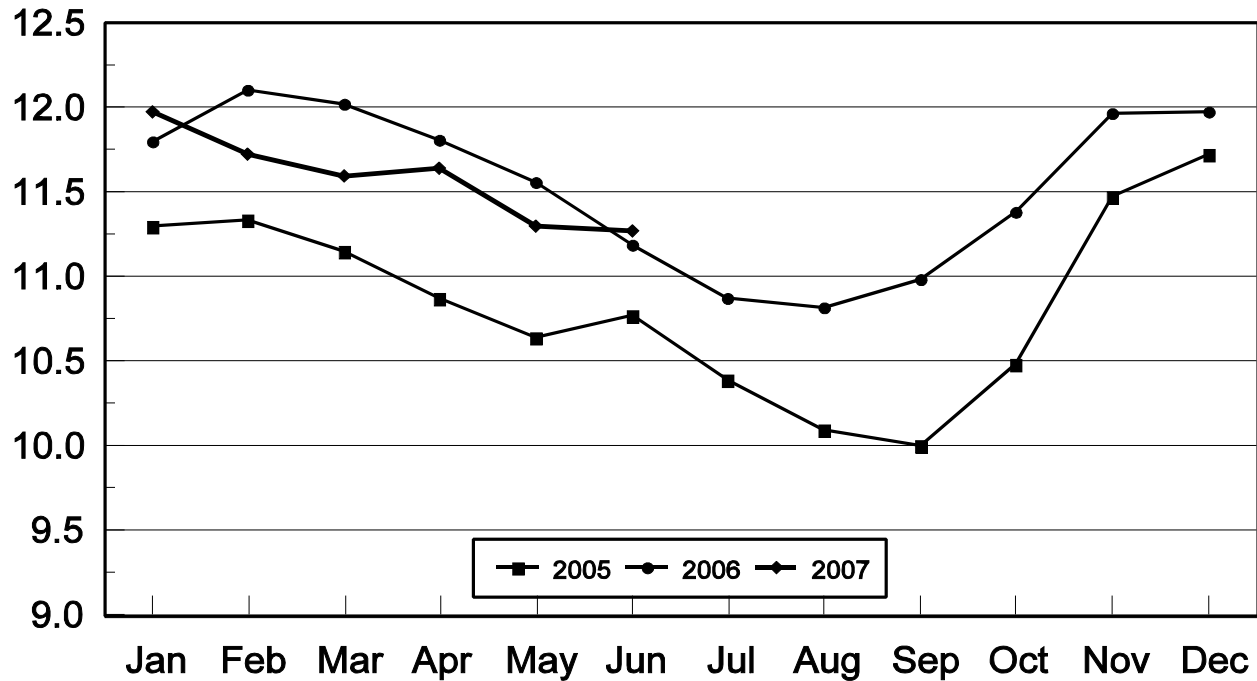
**Cattle on Feed: Number on Feed, 1,000+ Capacity Feedlots,
by Month, State, and United States 2006-2007 ¹**

State	Jun 1, 2006	May 1, 2007	Jun 1, 2007		
			Number	as % of 2006	as % of May
	<i>1,000 Head</i>	<i>1,000 Head</i>	<i>1,000 Head</i>	<i>Percent</i>	<i>Percent</i>
AZ	341	340	340	100	100
CA	535	550	555	104	101
CO	1,030	1,020	1,020	99	100
ID	230	235	230	100	98
IA	470	530	520	111	98
KS	2,400	2,350	2,290	95	97
NE	2,120	2,420	2,290	108	95
NM	135	118	128	95	108
OK	345	335	340	99	101
SD	195	230	215	110	93
TX	2,960	2,680	2,870	97	107
WA	141	154	149	106	97
Oth Sts	285	335	325	114	97
US	11,187	11,297	11,272	101	100

¹ Cattle and calves on feed are animals for slaughter market being fed a ration of grain or other concentrates and are expected to produce a carcass that will grade select or better.

United States Cattle on Feed 1,000+ Capacity Feedlots

Million Head

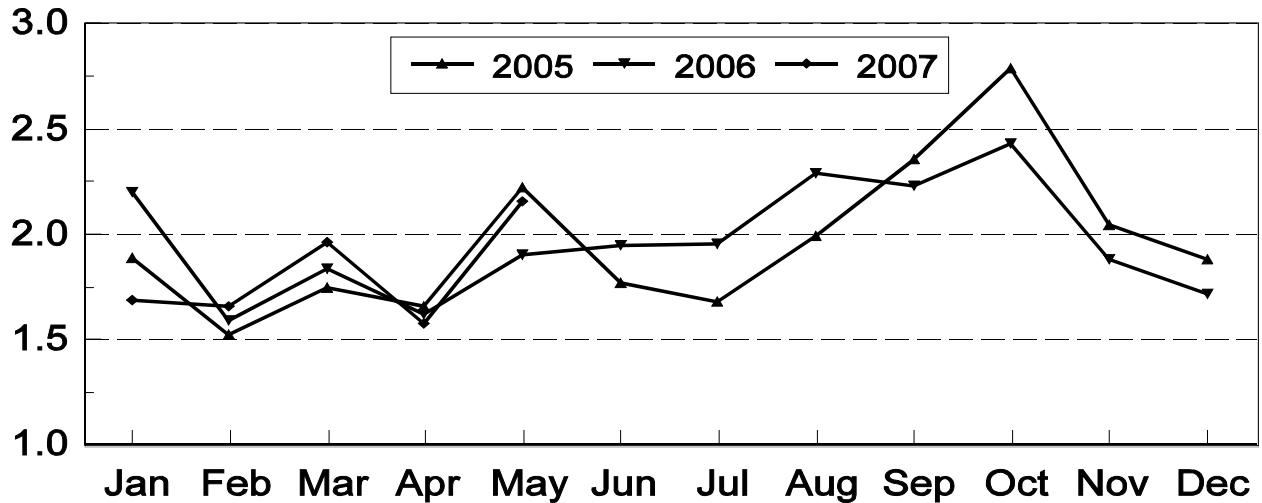


**Cattle on Feed: Number Placed on Feed, 1,000+ Capacity Feedlots,
by Month, State, and United States 2006-2007**

State	During May 2006	During Apr 2007	During May 2007		
			Number	as % of 2006	as % of Apr
	<i>1,000 Head</i>	<i>1,000 Head</i>	<i>1,000 Head</i>	<i>Percent</i>	<i>Percent</i>
AZ	29	31	36	124	116
CA	80	85	73	91	86
CO	165	155	175	106	113
ID	37	35	43	116	123
IA	51	61	54	106	89
KS	415	355	465	112	131
NE	340	290	390	115	134
NM	25	12	34	136	283
OK	76	54	71	93	131
SD	33	36	34	103	94
TX	590	380	710	120	187
WA	20	22	29	145	132
Oth Sts	42	57	45	107	79
US	1,903	1,573	2,159	113	137

**United States Cattle on Feed
1,000+ Capacity Feedlots Number Placed**

Million Head



**Cattle on Feed: Number Placed on Feed by Weight Group, 1,000+ Capacity
Feedlots, by Month, State, and United States, 2006-2007**

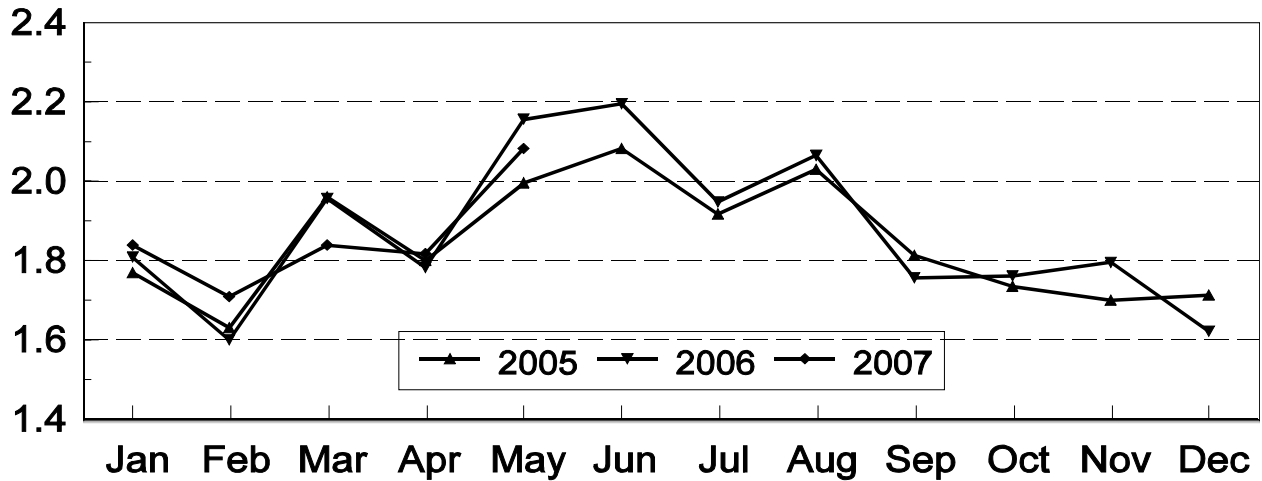
State	During May									
	Under 600		600-699		700-799		800 Plus		Total	
	2006	2007	2006	2007	2006	2007	2006	2007	2006	2007
	<i>1,000 Head</i>	<i>1,000 Head</i>	<i>1,000 Head</i>	<i>1,000 Head</i>	<i>1,000 Head</i>	<i>1,000 Head</i>	<i>1,000 Head</i>	<i>1,000 Head</i>	<i>1,000 Head</i>	<i>1,000 Head</i>
CO	35	25	40	30	45	50	45	70	165	175
KS	65	80	85	85	115	135	150	165	415	465
NE	65	55	50	60	80	110	145	165	340	390
TX	155	130	135	145	170	260	130	175	590	710
Oth Sts	120	130	60	54	88	90	125	145	393	419
US	440	420	370	374	498	645	595	720	1,903	2,159
	During April									
	Under 600		600-699		700-799		800 Plus		Total	
	2006	2007	2006	2007	2006	2007	2006	2007	2006	2007
	<i>1,000 Head</i>	<i>1,000 Head</i>	<i>1,000 Head</i>	<i>1,000 Head</i>	<i>1,000 Head</i>	<i>1,000 Head</i>	<i>1,000 Head</i>	<i>1,000 Head</i>	<i>1,000 Head</i>	<i>1,000 Head</i>
CO	40	30	20	30	35	40	35	55	130	155
KS	60	60	65	65	115	110	135	120	375	355
NE	60	50	45	40	85	80	130	120	320	290
TX	120	105	95	75	135	110	105	90	455	380
Oth Sts	105	130	40	53	74	90	120	120	339	393
US	385	375	265	263	444	430	525	505	1,619	1,573

**Cattle on Feed: Number Marketed, 1,000+ Capacity Feedlots,
by Month, State, and United States 2006-2007**

State	During May 2006	During Apr 2007	During May 2007		
			Number	as % of 2006	as % of Apr
	<i>1,000 Head</i>	<i>1,000 Head</i>	<i>1,000 Head</i>	<i>Percent</i>	<i>Percent</i>
AZ	27	30	32	119	107
CA	70	61	65	93	107
CO	175	135	155	89	115
ID	47	40	42	89	105
IA	74	59	63	85	107
KS	520	445	500	96	112
NE	520	340	500	96	147
NM	21	24	23	110	96
OK	70	68	65	93	96
SD	34	34	45	132	132
TX	520	490	510	98	104
WA	30	30	33	110	110
Oth Sts	52	65	52	100	80
US	2,160	1,821	2,085	97	114

United States Cattle on Feed 1,000+ Capacity Feedlots Number Marketed

Million Head



**Cattle on Feed: Other Disappearance, 1,000+ Capacity Feedlots,
by Month, State, and United States 2006-2007 ¹**

State	During May 2006	During Apr 2007	During May 2007		
			Number	as % of 2006	as % of Apr
	<i>1,000 Head</i>	<i>1,000 Head</i>	<i>1,000 Head</i>	<i>Percent</i>	<i>Percent</i>
AZ	6	1	4	67	400
CA	5	4	3	60	75
CO	20	20	20	100	100
ID	5	5	6	120	120
IA	2	2	1	50	50
KS	25	40	25	100	63
NE	20	10	20	100	200
NM	1	1	1	100	100
OK	1	1	1	100	100
SD	4	2	4	100	200
TX	20	10	10	50	100
WA	1	1	1	100	100
Oth Sts	5	2	3	60	150
US	115	99	99	86	100

¹ Includes death loss, movement from feedlots to pasture, and shipments to other feedlots for further feeding.

Terms and Definitions of Cattle on Feed Estimates

Cattle on feed are animals being fed a ration of grain, silage, hay and/or protein supplement for slaughter market that are expected to produce a carcass that will grade select or better. It excludes cattle being "backgrounded only" for later sale as feeders or later placement in another feedlot.

Placements are cattle put into a feedlot, fed a ration which will produce a carcass that will grade select or better, and are intended for the slaughter market.

Marketings are cattle shipped out of feedlots to a slaughter market.

Other disappearance includes death loss, movement from feedlots to pasture, and shipments to other feedlots for further feeding.

Reliability of Cattle on Feed Estimates

Survey Procedures: During January and July all known feedlots in the U.S. with capacity of 1,000 or more head are surveyed to provide data for cattle on feed estimates. During the other months, all known feedlots from 17 States are surveyed. The 17 States account for 98 percent of the cattle on feed in feedlots with capacity of 1,000 or more head.

Estimating Procedures: These cattle on feed estimates were prepared by the Agricultural Statistics Board after reviewing recommendations and analysis submitted by each State office. Regional and State survey data were reviewed for reasonableness with each other and with estimates from the previous month when setting the current estimates.

Revision Policy: Revisions to previous estimates are made to improve month to month relationships. Estimates for the previous month are subject to revision in all States each month when current estimates are made. In February, all monthly estimates for the previous year, and the number of feedlots and annual marketings from two years ago are reviewed and subject to revisions. The reviews are primarily based on slaughter data, state check-off or brand data, and any other data that may have been received after the original estimate was made. Estimates will also be reviewed after data from the Census of Agriculture are available. No revisions will be made after that date and estimates become final.

Reliability: Since all 1,000+ capacity cattle on feed operators in every State are not included in the monthly survey, survey estimates are subject to sampling variability. Survey results are also subject to non-sampling errors such as omissions, duplications, and mistakes in reporting, recording, and processing the data. The effects of these errors cannot be measured directly. They are minimized through rigid quality controls in the data collection process and through a careful review of all reported data for consistency and reasonableness.

To assist users in evaluating the reliability of estimates in this report, the "**Root Mean Square Error**" is shown for selected items in the following table. The "Root Mean Square Error" is a statistical measure based on past performance and is computed using the differences between first and latest estimates. The "Root Mean Square Error" for cattle on feed inventory estimates over the past 10 years is .2 percent. This means that chances are 2 out of 3 that the final estimate will not be above or below the current estimate of 11.3 million head by more than .2 percent. Chances are 9 out of 10 that the difference will not exceed .4 percent.

The following table also shows a 10 year record of the range of differences between first and latest estimates for selected items. Using estimates of number on feed as an example, changes between the first estimate and the latest estimate during the past 10 years have averaged 14,000 head, ranging from 0

to 50,000 head. During this period the initial estimate has been below the final estimate 8 times, and above the final estimate 0 times. This does not imply that the initial estimate is likely to understate or overstate final inventory.

Reliability of U.S. June 1 Cattle on Feed Estimates ¹

Item	Root Mean Square Error	90% Confidence Level		Difference Between First and Final Estimates ¹			Number of Years	
		Percent	(000) Head	Average	Smallest	Largest	First Above Final	First Below Final
	<i>Percent</i>	<i>Percent</i>	<i>1,000 Head</i>	<i>1,000 Head</i>	<i>1,000 Head</i>	<i>1,000 Head</i>	<i>Number</i>	<i>Number</i>
Number on Feed	0.2	0.4	40.1	14	0	50	0	8
Placements	0.8	1.4	31.2	11	0	40	2	7
Marketings	0.6	1.1	22.8	8	0	33	4	4

¹ Based on data for the past 10 years.

Information Contacts

Listed below are the commodity specialists in the Livestock Branch of the National Agricultural Statistics Service to contact for additional information.

Dan Kerestes, Chief, Livestock Branch (202) 720-3570

Livestock Section

- William Weaver, Head, Livestock Section (202) 720-3570
- Bruce Boess - Hogs and Pigs (202) 720-3106
- Shawn Clark - Dairy Products (202) 690-3236
- Jason Hardegree - Milk Production and Milk Cows (202) 720-3278
- Scott Hollis - Sheep & Lambs, Goats (202) 720-4751
- Mike Miller - Cattle, Cattle on Feed (202) 720-3040
- Benita Hodge - Livestock Slaughter (515) 284-4340
- Charmaine Wilson - Dairy Products Prices (202) 690-2168

ACCESS TO REPORTS!!

For your convenience, there are several ways to obtain NASS reports, data products, and services:

INTERNET ACCESS

All NASS reports are available free of charge on the worldwide Internet. For access, connect to the Internet and go to the NASS Home Page at: www.nass.usda.gov.

E-MAIL SUBSCRIPTION

All NASS reports are available by subscription free of charge direct to your e-mail address. Starting with the NASS Home Page at www.nass.usda.gov, under the right navigation, *Receive reports by Email*, click on **National** or **State**. Follow the instructions on the screen.

PRINTED REPORTS OR DATA PRODUCTS

CALL OUR TOLL-FREE ORDER DESK: 800-999-6779 (U.S. and Canada)
Other areas, please call 703-605-6220 FAX: 703-605-6900
(Visa, MasterCard, check, or money order acceptable for payment.)

ASSISTANCE

For **assistance** with general agricultural statistics or further information about NASS or its products or services, contact the **Agricultural Statistics Hotline** at **800-727-9540**, 7:30 a.m. to 4:00 p.m. ET, or e-mail: nass@nass.usda.gov.

The U.S. Department of Agriculture (USDA) prohibits discrimination in all its programs and activities on the basis of race, color, national origin, age, disability, and where applicable, sex, marital status, familial status, parental status, religion, sexual orientation, genetic information, political beliefs, reprisal, or because all or a part of an individual's income is derived from any public assistance program. (Not all prohibited bases apply to all programs.) Persons with disabilities who require alternative means for communication of program information (Braille, large print, audiotape, etc.) should contact USDA's TARGET Center at (202) 720-2600 (voice and TDD).

To file a complaint of discrimination, write to USDA, Director, Office of Civil Rights, 1400 Independence Avenue, S.W., Washington, D.C. 20250-9410, or call (800) 795-3272 (voice) or (202) 720-6382 (TDD). USDA is an equal opportunity provider and employer.