



NASS

FACT FINDERS FOR AGRICULTURE
UNITED STATES DEPARTMENT OF AGRICULTURE

Washington, D.C.

Cattle On Feed

Released July 20, 2007, by the National Agricultural Statistics Service (NASS), Agricultural Statistics Board, U.S. Department of Agriculture. For information on *Cattle on Feed* call Mike Miller at (202) 720-3040, office hours 7:30 a.m. to 4:00 p.m. ET.

U.S. Cattle on Feed Down 1 Percent

Cattle and calves on feed for slaughter market in the United States for feedlots with capacity of 1,000 or more head totaled 10.7 million head on July 1, 2007. The inventory was 1 percent below July 1, 2006 but 3 percent above July 1, 2005. The inventory included 6.74 million steers and steer calves, down 5 percent from the previous year. This group accounted for 63 percent of the total inventory. Heifers and heifer calves accounted for 3.93 million head, up 6 percent from 2006.

Placements in feedlots during June totaled 1.66 million, 15 percent below 2006 and 6 percent below 2005. Net placements were 1.61 million. During June, placements of cattle and calves weighing less than 600 pounds were 405,000, 600-699 pounds were 325,000, 700-799 pounds were 457,000, and 800 pounds and greater were 470,000.

Marketings of fed cattle during June totaled 2.14 million, 3 percent below 2006 but up 3 percent from 2005.

Other disappearance totaled 52,000 during June, down 17 percent from 2006 and 2005.

U.S. All Cattle on Feed Down 2 Percent

Cattle on feed July 1, 2007, from all feedlots in the United States, totaled 12.3 million, down 2 percent from the 12.5 million on July 1, 2006 but up 3 percent from July 1, 2005. Cattle on feed in feedlots with 1,000 or more head accounted for 87 percent of the total cattle on feed on July 1, 2007, unchanged from July 1, 2006.

**Cattle on Feed: Number on Feed, Placements, Marketings, and
Other Disappearance, 1,000+ Capacity Feedlots,
United States, July 1, 2005-2007**

Item	Number			2007 as % of	
	2005	2006	2007	2005	2006
	<i>1,000 Head</i>	<i>1,000 Head</i>	<i>1,000 Head</i>	<i>Percent</i>	<i>Percent</i>
On Feed Jun 1 ¹	10,771	11,187	11,272	105	101
Placed on Feed During Jun	1,769	1,946	1,657	94	85
Fed Cattle Marketed During Jun	2,083	2,198	2,140	103	97
Other Disappearance During Jun ²	63	63	52	83	83
On Feed Jul 1 ¹	10,394	10,872	10,737	103	99

¹ Cattle and calves on feed are animals for slaughter market being fed a ration of grain or other concentrates and are expected to produce a carcass that will grade select or better.

² Includes death loss, movement from feedlots to pasture, and shipments to other feedlots for further feeding.

**Cattle on Feed: Number on Feed, Placements, Marketings, and
Other Disappearance, 1,000+ Capacity Feedlots,
United States, June 1, 2005-2007**

Item	Number			2007 as % of	
	2005	2006	2007	2005	2006
	<i>1,000 Head</i>	<i>1,000 Head</i>	<i>1,000 Head</i>	<i>Percent</i>	<i>Percent</i>
On Feed May 1 ¹	10,641	11,559	11,297	106	98
Placed on Feed During May	2,223	1,903	2,159	97	113
Fed Cattle Marketed During May	1,997	2,160	2,085	104	97
Other Disappearance During May ²	96	115	99	103	86
On Feed Jun 1 ¹	10,771	11,187	11,272	105	101

¹ Cattle and calves on feed are animals for slaughter market being fed a ration of grain or other concentrates and are expected to produce a carcass that will grade select or better.

² Includes death loss, movement from feedlots to pasture, and shipments to other feedlots for further feeding.

**Cattle on Feed: Number on Feed by Class, 1,000+ Capacity Feedlots,
United States, July 1, 2005-2007**

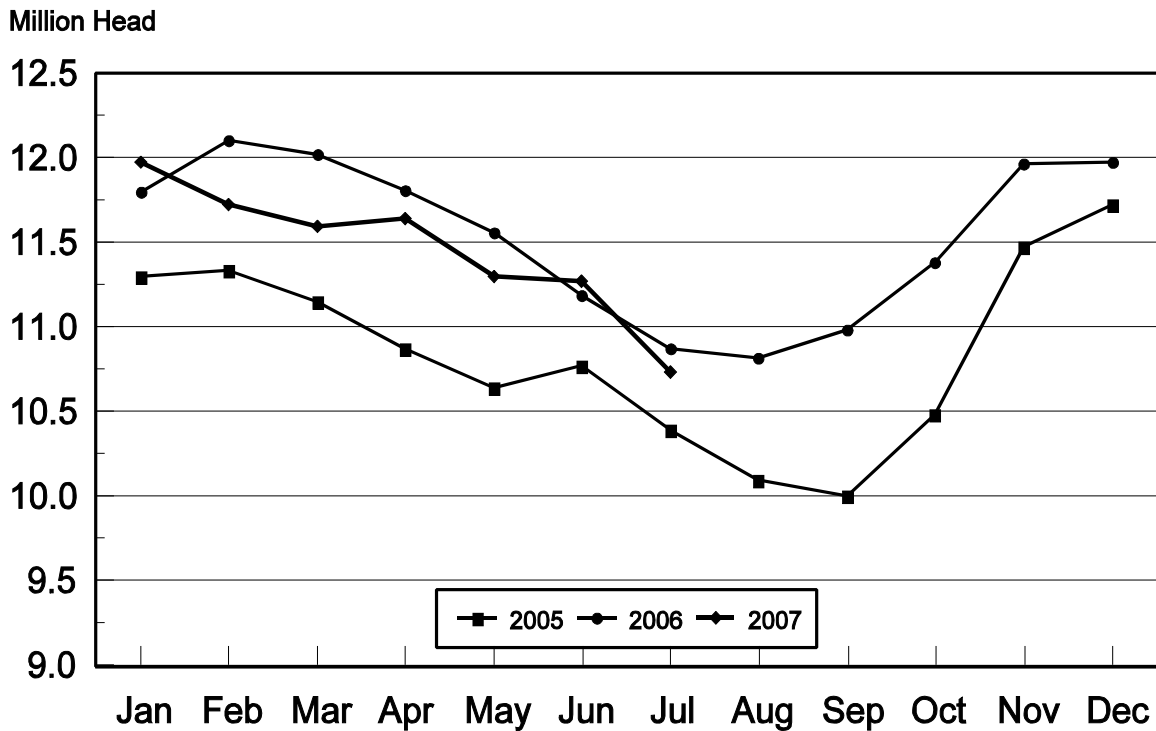
Item	Number			2007 as % of	
	2005	2006	2007	2005	2006
	<i>1,000 Head</i>	<i>1,000 Head</i>	<i>1,000 Head</i>	<i>Percent</i>	<i>Percent</i>
Class on Feed Jul 1					
Steers and Steer Calves	6,802	7,092	6,742	99	95
Heifers and Heifer Calves	3,527	3,710	3,928	111	106
Cows and Bulls	65	70	67	103	96

**Cattle on Feed: Number on Feed, 1,000+ Capacity Feedlots,
by Month, State, and United States 2006-2007 ¹**

State	Jul 1, 2006	Jun 1, 2007	Jul 1, 2007		
			Number	as % of 2006	as % of Jun
	<i>1,000 Head</i>	<i>1,000 Head</i>	<i>1,000 Head</i>	<i>Percent</i>	<i>Percent</i>
AZ	344	340	343	100	101
CA	530	555	545	103	98
CO	980	1,020	940	96	92
ID	230	230	220	96	96
IA	460	520	510	111	98
KS	2,280	2,290	2,140	94	93
NE	1,990	2,290	2,050	103	90
NM	140	128	132	94	103
OK	340	340	325	96	96
SD	180	215	197	109	92
TX	2,980	2,870	2,870	96	100
WA	148	149	150	101	101
Oth Sts	270	325	315	117	97
US	10,872	11,272	10,737	99	95

¹ Cattle and calves on feed are animals for slaughter market being fed a ration of grain or other concentrates and are expected to produce a carcass that will grade select or better.

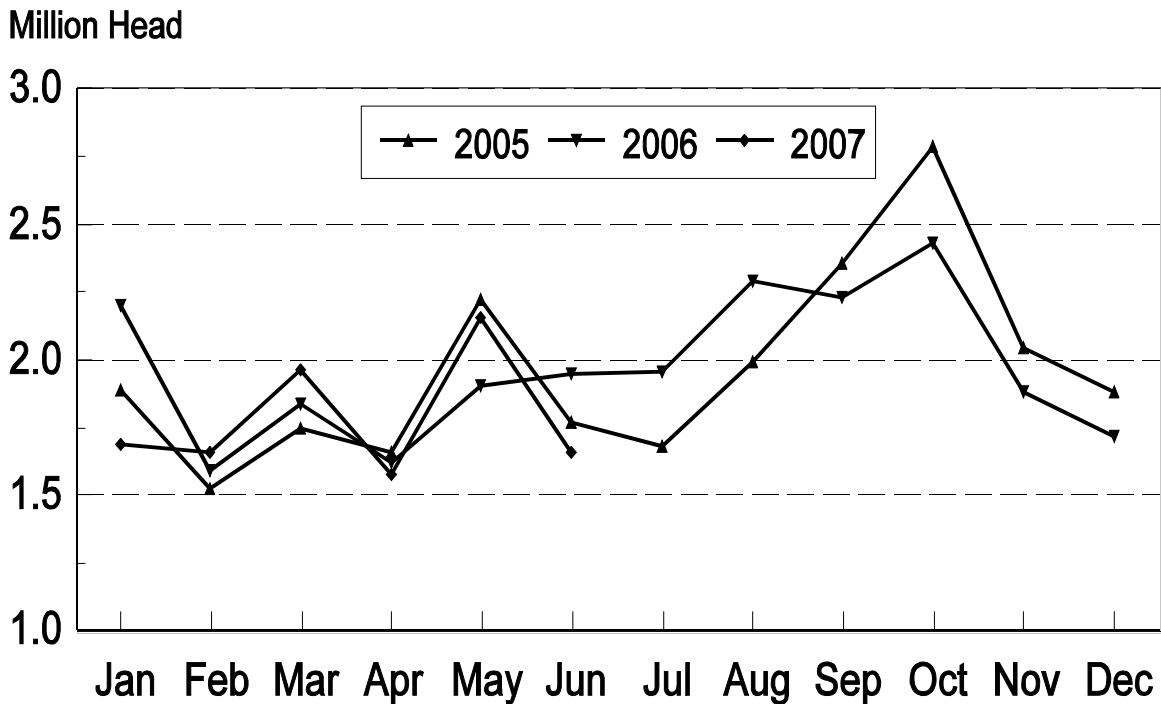
United States Cattle on Feed 1,000+ Capacity Feedlots



**Cattle on Feed: Number Placed on Feed, 1,000+ Capacity Feedlots,
by Month, State, and United States 2006-2007**

State	During Jun 2006	During May 2007	During Jun 2007		
			Number	as % of 2006	as % of May
	<i>1,000 Head</i>	<i>1,000 Head</i>	<i>1,000 Head</i>	<i>Percent</i>	<i>Percent</i>
AZ	34	36	39	115	108
CA	73	73	53	73	73
CO	170	175	120	71	69
ID	58	43	37	64	86
IA	59	54	52	88	96
KS	445	465	375	84	81
NE	370	390	330	89	85
NM	33	34	22	67	65
OK	63	71	52	83	73
SD	29	34	24	83	71
TX	530	710	485	92	68
WA	39	29	31	79	107
Oth Sts	43	45	37	86	82
US	1,946	2,159	1,657	85	77

United States Cattle on Feed 1,000+ Capacity Feedlots Number Placed



**Cattle on Feed: Number Placed on Feed by Weight Group, 1,000+ Capacity
Feedlots, by Month, State, and United States, 2006-2007**

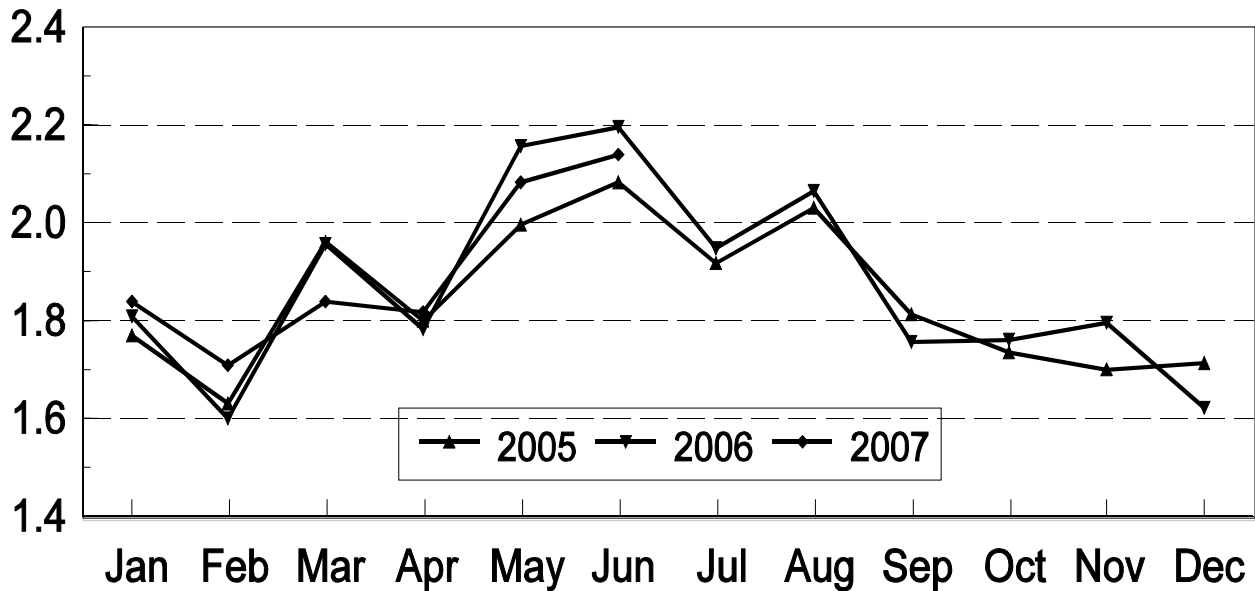
State	During June									
	Under 600		600-699		700-799		800 Plus		Total	
	2006	2007	2006	2007	2006	2007	2006	2007	2006	2007
	<i>1,000 Head</i>	<i>1,000 Head</i>	<i>1,000 Head</i>	<i>1,000 Head</i>	<i>1,000 Head</i>	<i>1,000 Head</i>	<i>1,000 Head</i>	<i>1,000 Head</i>	<i>1,000 Head</i>	<i>1,000 Head</i>
CO	50	15	35	20	55	35	30	50	170	120
KS	115	80	105	70	105	125	120	100	445	375
NE	80	75	60	55	90	70	140	130	370	330
TX	190	110	170	135	115	160	55	80	530	485
Oth Sts	130	125	60	45	91	67	150	110	431	347
US	565	405	430	325	456	457	495	470	1,946	1,657
	During May									
	Under 600		600-699		700-799		800 Plus		Total	
	2006	2007	2006	2007	2006	2007	2006	2007	2006	2007
	<i>1,000 Head</i>	<i>1,000 Head</i>	<i>1,000 Head</i>	<i>1,000 Head</i>	<i>1,000 Head</i>	<i>1,000 Head</i>	<i>1,000 Head</i>	<i>1,000 Head</i>	<i>1,000 Head</i>	<i>1,000 Head</i>
CO	35	25	40	30	45	50	45	70	165	175
KS	65	80	85	85	115	135	150	165	415	465
NE	65	55	50	60	80	110	145	165	340	390
TX	155	130	135	145	170	260	130	175	590	710
Oth Sts	120	130	60	54	88	90	125	145	393	419
US	440	420	370	374	498	645	595	720	1,903	2,159

**Cattle on Feed: Number Marketed, 1,000+ Capacity Feedlots,
by Month, State, and United States 2006-2007**

State	During Jun 2006	During May 2007	During Jun 2007		
			Number	as % of 2006	as % of May
			<i>1,000 Head</i>	<i>Percent</i>	<i>Percent</i>
AZ	30	32	35	117	109
CA	74	65	60	81	92
CO	210	155	190	90	123
ID	55	42	46	84	110
IA	66	63	61	92	97
KS	550	500	515	94	103
NE	490	500	560	114	112
NM	27	23	17	63	74
OK	67	65	66	99	102
SD	41	45	39	95	87
TX	500	510	475	95	93
WA	31	33	30	97	91
Oth Sts	57	52	46	81	88
US	2,198	2,085	2,140	97	103

United States Cattle on Feed 1,000+ Capacity Feedlots Number Marketed

Million Head



**Cattle on Feed: Other Disappearance, 1,000+ Capacity Feedlots,
by Month, State, and United States 2006-2007 ¹**

State	During Jun 2006 <i>1,000 Head</i>	During May 2007 <i>1,000 Head</i>	During Jun 2007		
			Number <i>1,000 Head</i>	as % of 2006 <i>Percent</i>	as % of May <i>Percent</i>
AZ	1	4	1	100	25
CA	4	3	3	75	100
CO	10	20	10	100	50
ID	3	6	1	33	17
IA	3	1	1	33	100
KS	15	25	10	67	40
NE	10	20	10	100	50
NM	1	1	1	100	100
OK	1	1	1	100	100
SD	3	4	3	100	75
TX	10	10	10	100	100
WA	1	1	0	0	0
Oth Sts	1	3	1	100	33
US	63	99	52	83	53

¹ Includes death loss, movement from feedlots to pasture, and shipments to other feedlots for further feeding.

**Cattle on Feed: Number on Feed by Class, 1,000+ Capacity Feedlots,
by Quarter, State, and United States, 2006-2007**

State	Steers & Steer Calves			Heifers & Heifer Calves			Cows and Bulls		
	Jul 1, 2006	Apr 1, 2007	Jul 1, 2007	Jul 1, 2006	Apr 1, 2007	Jul 1, 2007	Jul 1, 2006	Apr 1, 2007	Jul 1, 2007
	<i>1,000 Head</i>	<i>1,000 Head</i>	<i>1,000 Head</i>	<i>1,000 Head</i>	<i>1,000 Head</i>	<i>1,000 Head</i>	<i>1,000 Head</i>	<i>1,000 Head</i>	<i>1,000 Head</i>
AZ	341	339	342	3	1	1	0	0	0
CA	487	485	490	40	45	54	3	0	1
CO	650	660	590	320	355	345	10	5	5
ID	149	146	133	79	96	83	2	3	4
IA	320	350	340	139	179	169	1	1	1
KS	1,300	1,340	1,090	970	1,115	1,030	10	25	20
NE	1,240	1,520	1,230	740	950	810	10	10	10
NM	84	81	84	56	50	48	0	0	0
OK	240	235	225	100	115	100	0	0	0
SD	85	130	98	72	82	80	23	18	19
TX	1,900	1,780	1,780	1,075	1,017	1,087	5	3	3
WA	81	87	90	66	75	59	1	1	1
Oth Sts	215	280	250	50	62	62	5	3	3
US	7,092	7,433	6,742	3,710	4,142	3,928	70	69	67

**Cattle on Feed: Total Number on Feed, United States,
July 1, 2005-2007 ¹**

State	Jul 1, 2005	Jul 1, 2006	July 1, 2007		
			Number	as % of 2005	as % of 2006
	<i>1,000 Head</i>	<i>1,000 Head</i>	<i>1,000 Head</i>	<i>Percent</i>	<i>Percent</i>
US	12,000	12,500	12,300	103	98

¹ Cattle and calves on feed are animals for slaughter market being fed a ration of grain or other concentrates and are expected to produce a carcass that will grade select or better.

Terms and Definitions of Cattle on Feed Estimates

Cattle on feed are animals being fed a ration of grain, silage, hay and/or protein supplement for slaughter market that are expected to produce a carcass that will grade select or better. It excludes cattle being "backgrounded only" for later sale as feeders or later placement in another feedlot.

Placements are cattle put into a feedlot, fed a ration which will produce a carcass that will grade select or better, and are intended for the slaughter market.

Marketings are cattle shipped out of feedlots to a slaughter market.

Other disappearance includes death loss, movement from feedlots to pasture, and shipments to other feedlots for further feeding.

Reliability of Cattle on Feed Estimates

Survey Procedures: During January and July all known feedlots in the U.S. with capacity of 1,000 or more head are surveyed to provide data for cattle on feed estimates. During the other months, all known feedlots from 17 States are surveyed. The 17 States account for 98 percent of the cattle on feed in feedlots with capacity of 1,000 or more head.

Estimating Procedures: These cattle on feed estimates were prepared by the Agricultural Statistics Board after reviewing recommendations and analysis submitted by each State office. Regional and State survey data were reviewed for reasonableness with each other and with estimates from the previous month when setting the current estimates.

Revision Policy: Revisions to previous estimates are made to improve month to month relationships. Estimates for the previous month are subject to revision in all States each month when current estimates are made. In February, all monthly estimates for the previous year, and the number of feedlots and annual marketings from two years ago are reviewed and subject to revisions. The reviews are primarily based on slaughter data, state check-off or brand data, and any other data that may have been received after the original estimate was made. Estimates will also be reviewed after data from the Census of Agriculture are available. No revisions will be made after that date and estimates become final.

Reliability: Since all 1,000+ capacity cattle on feed operators in every State are not included in the monthly survey, survey estimates are subject to sampling variability. Survey results are also subject to non-sampling errors such as omissions, duplications, and mistakes in reporting, recording, and processing the data. The effects of these errors cannot be measured directly. They are minimized through rigid quality controls in the data collection process and through a careful review of all reported data for consistency and reasonableness.

To assist users in evaluating the reliability of estimates in this report, the "**Root Mean Square Error**" is shown for selected items in the following table. The "Root Mean Square Error" is a statistical measure based on past performance and is computed using the differences between first and latest estimates. The "Root Mean Square Error" for cattle on feed inventory estimates over the past 10 years is .1 percent. This means that chances are 2 out of 3 that the final estimate will not be above or below the current estimate of 10.7 million head by more than .1 percent. Chances are 9 out of 10 that the difference will not exceed .2 percent.

The following table also shows a 10 year record of the range of differences between first and latest estimates for selected items. Using estimates of number on feed as an example, changes between the first estimate and the latest estimate during the past 10 years have averaged 7,000 head, ranging from 0

to 20,000 head. During this period the initial estimate has been below the final estimate 4 times, and above the final estimate 2 times. This does not imply that the initial estimate is likely to understate or overstate final inventory.

Reliability of U.S. July 1 Cattle on Feed Estimates ¹

Item	Root Mean Square Error	90% Confidence Level		Difference Between First and Final Estimates ¹			Number of Years	
		Percent	(000) Head	Average	Smallest	Largest	First Above Final	First Below Final
	<i>Percent</i>	<i>Percent</i>	<i>1,000 Head</i>	<i>1,000 Head</i>	<i>1,000 Head</i>	<i>1,000 Head</i>	<i>Number</i>	<i>Number</i>
Number on Feed	0.1	0.2	18.1	7	0	20	2	4
Placements	0.3	0.6	9.5	4	0	10	3	3
Marketings	0.4	0.7	15.4	6	0	20	2	5

¹ Based on data for the past 10 years.

Information Contacts

Listed below are the commodity specialists in the Livestock Branch of the National Agricultural Statistics Service to contact for additional information.

- Dan Kerestes, Chief, Livestock Branch (202) 720-3570
- Shawn Clark, Head, Livestock Section (202) 720-3570
- Bruce Boess - Hogs and Pigs (202) 720-3106
- Shawn Clark - Dairy Products (202) 690-3236
- Jason Hardegree - Milk Production and Milk Cows (202) 720-3278
- Scott Hollis - Sheep & Lambs, Goats & Kids (202) 720-4751
- Mike Miller - Cattle, Cattle on Feed (202) 720-3040
- Benita Hodge - Livestock Slaughter (515) 284-4340
- Charmaine Wilson - Dairy Products Prices (202) 690-2168

ACCESS TO REPORTS!!

For your convenience, there are several ways to obtain NASS reports, data products, and services:

INTERNET ACCESS

All NASS reports are available free of charge on the worldwide Internet. For access, connect to the Internet and go to the NASS Home Page at: www.nass.usda.gov.

E-MAIL SUBSCRIPTION

All NASS reports are available by subscription free of charge direct to your e-mail address. Starting with the NASS Home Page at www.nass.usda.gov, under the right navigation, *Receive reports by Email*, click on **National** or **State**. Follow the instructions on the screen.

PRINTED REPORTS OR DATA PRODUCTS

CALL OUR TOLL-FREE ORDER DESK: 800-999-6779 (U.S. and Canada)
Other areas, please call 703-605-6220 FAX: 703-605-6900
(Visa, MasterCard, check, or money order acceptable for payment.)

ASSISTANCE

For **assistance** with general agricultural statistics or further information about NASS or its products or services, contact the **Agricultural Statistics Hotline** at **800-727-9540**, 7:30 a.m. to 4:00 p.m. ET, or e-mail: nass@nass.usda.gov.

The U.S. Department of Agriculture (USDA) prohibits discrimination in all its programs and activities on the basis of race, color, national origin, age, disability, and where applicable, sex, marital status, familial status, parental status, religion, sexual orientation, genetic information, political beliefs, reprisal, or because all or a part of an individual's income is derived from any public assistance program. (Not all prohibited bases apply to all programs.) Persons with disabilities who require alternative means for communication of program information (Braille, large print, audiotape, etc.) should contact USDA's TARGET Center at (202) 720-2600 (voice and TDD).

To file a complaint of discrimination, write to USDA, Director, Office of Civil Rights, 1400 Independence Avenue, S.W., Washington, D.C. 20250-9410, or call (800) 795-3272 (voice) or (202) 720-6382 (TDD). USDA is an equal opportunity provider and employer.