



NASS

FACT FINDERS FOR AGRICULTURE
UNITED STATES DEPARTMENT OF AGRICULTURE

Washington, D.C.

Cattle On Feed

Released August 17, 2007, by the National Agricultural Statistics Service (NASS), Agricultural Statistics Board, U.S. Department of Agriculture. For information on *Cattle on Feed* call Mike Miller at (202) 720-3040, office hours 7:30 a.m. to 4:00 p.m. ET.

U.S. Cattle on Feed Down 5 Percent

Cattle and calves on feed for slaughter market in the United States for feedlots with capacity of 1,000 or more head totaled 10.3 million head on August 1, 2007. The inventory was 5 percent below August 1, 2006 but 2 percent above August 1, 2005.

Placements in feedlots during July totaled 1.62 million, 17 percent below 2006 and 3 percent below 2005. Net placements were 1.56 million. This is the lowest placements for the month of July since the series began in 1996. During July, placements of cattle and calves weighing less than 600 pounds were 360,000, 600-699 pounds were 312,000, 700-799 pounds were 445,000, and 800 pounds and greater were 505,000.

Marketings of fed cattle during July totaled 2.0 million, 3 percent above 2006 and 4 percent above 2005.

Other disappearance totaled 61,000 during July, 5 percent above 2006 but unchanged from 2005.

**Cattle on Feed: Number on Feed, Placements, Marketings, and
Other Disappearance, 1,000+ Capacity Feedlots,
United States, August 1, 2005-2007**

Item	Number			2007 as % of	
	2005	2006	2007	2005	2006
	<i>1,000 Head</i>	<i>1,000 Head</i>	<i>1,000 Head</i>	<i>Percent</i>	<i>Percent</i>
On Feed Jul 1 ¹	10,394	10,872	10,737	103	99
Placed on Feed During Jul	1,678	1,958	1,622	97	83
Fed Cattle Marketed During Jul	1,918	1,950	1,999	104	103
Other Disappearance During Jul ²	61	58	61	100	105
On Feed Aug 1 ¹	10,093	10,822	10,299	102	95

¹ Cattle and calves on feed are animals for slaughter market being fed a ration of grain or other concentrates and are expected to produce a carcass that will grade select or better.

² Includes death loss, movement from feedlots to pasture, and shipments to other feedlots for further feeding.

**Cattle on Feed: Number on Feed, Placements, Marketings, and
Other Disappearance, 1,000+ Capacity Feedlots,
United States, July 1, 2005-2007**

Item	Number			2007 as % of	
	2005	2006	2007	2005	2006
	<i>1,000 Head</i>	<i>1,000 Head</i>	<i>1,000 Head</i>	<i>Percent</i>	<i>Percent</i>
On Feed Jun 1 ¹	10,771	11,187	11,272	105	101
Placed on Feed During Jun	1,769	1,946	1,657	94	85
Fed Cattle Marketed During Jun	2,083	2,198	2,140	103	97
Other Disappearance During Jun ²	63	63	52	83	83
On Feed Jul 1 ¹	10,394	10,872	10,737	103	99

¹ Cattle and calves on feed are animals for slaughter market being fed a ration of grain or other concentrates and are expected to produce a carcass that will grade select or better.

² Includes death loss, movement from feedlots to pasture, and shipments to other feedlots for further feeding.

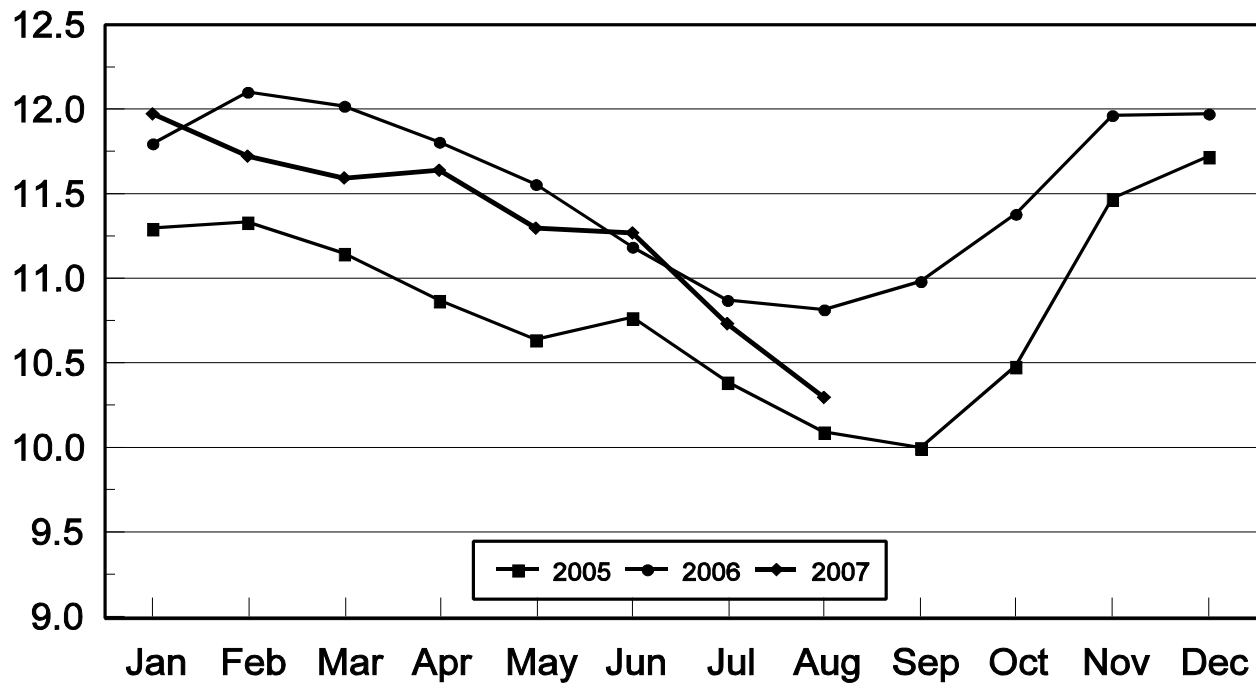
**Cattle on Feed: Number on Feed, 1,000+ Capacity Feedlots,
by Month, State, and United States 2006-2007 ¹**

State	Aug 1, 2006	Jul 1, 2007	Aug 1, 2007		
			Number	as % of 2006	as % of Jul
	<i>1,000 Head</i>	<i>1,000 Head</i>	<i>1,000 Head</i>	<i>Percent</i>	<i>Percent</i>
AZ	339	343	341	101	99
CA	515	545	540	105	99
CO	940	940	870	93	93
ID	225	220	205	91	93
IA	445	510	500	112	98
KS	2,360	2,140	2,100	89	98
NE	1,950	2,050	1,910	98	93
NM	144	132	129	90	98
OK	345	325	305	88	94
SD	165	197	175	106	89
TX	2,970	2,870	2,780	94	97
WA	154	150	144	94	96
Oth Sts	270	315	300	111	95
US	10,822	10,737	10,299	95	96

¹ Cattle and calves on feed are animals for slaughter market being fed a ration of grain or other concentrates and are expected to produce a carcass that will grade select or better.

United States Cattle on Feed 1,000+ Capacity Feedlots

Million Head

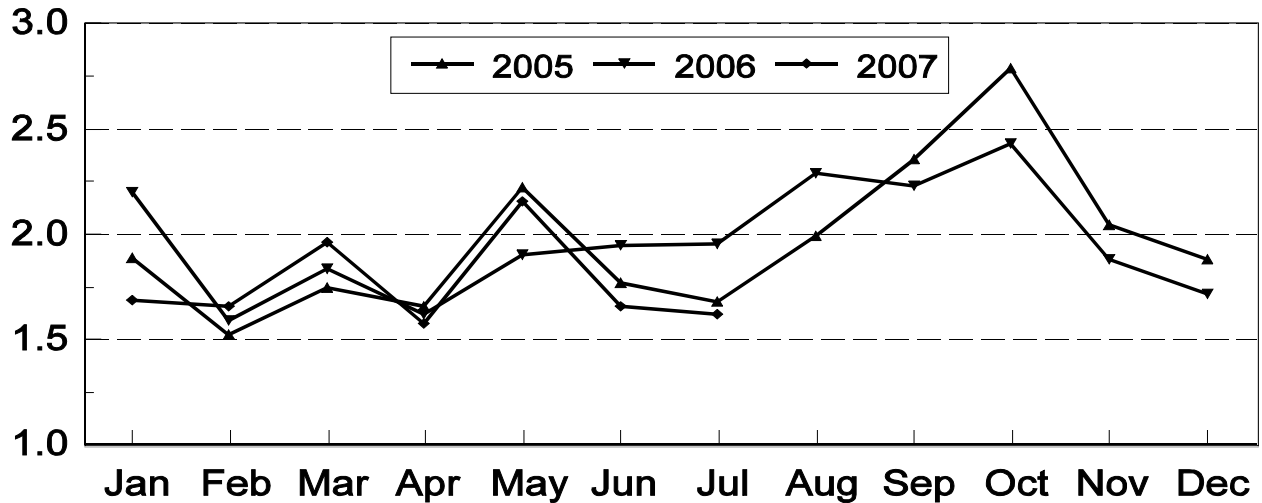


**Cattle on Feed: Number Placed on Feed, 1,000+ Capacity Feedlots,
by Month, State, and United States 2006-2007**

State	During Jul 2006	During Jun 2007	During Jul 2007		
			Number	as % of 2006	as % of Jun
	<i>1,000 Head</i>	<i>1,000 Head</i>	<i>1,000 Head</i>	<i>Percent</i>	<i>Percent</i>
AZ	31	39	32	103	82
CA	55	53	51	93	96
CO	145	120	115	79	96
ID	36	37	35	97	95
IA	60	52	64	107	123
KS	590	375	430	73	115
NE	380	330	350	92	106
NM	23	22	12	52	55
OK	58	52	48	83	92
SD	24	24	22	92	92
TX	480	485	390	81	80
WA	33	31	27	82	87
Oth Sts	43	37	46	107	124
US	1,958	1,657	1,622	83	98

**United States Cattle on Feed
1,000+ Capacity Feedlots Number Placed**

Million Head



**Cattle on Feed: Number Placed on Feed by Weight Group, 1,000+ Capacity
Feedlots, by Month, State, and United States, 2006-2007**

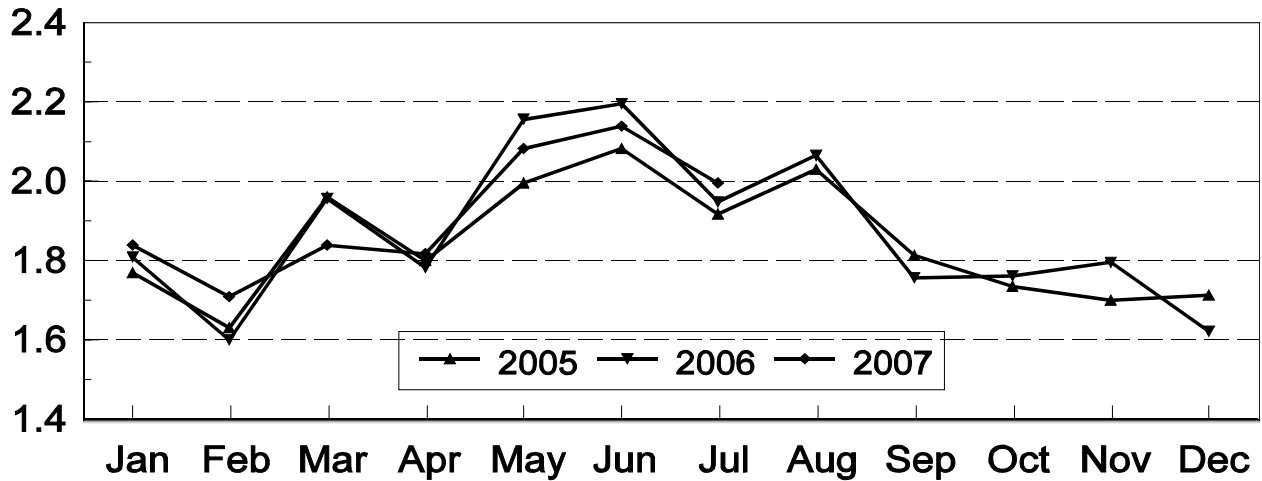
State	During July									
	Under 600		600-699		700-799		800 Plus		Total	
	2006	2007	2006	2007	2006	2007	2006	2007	2006	2007
	<i>1,000 Head</i>	<i>1,000 Head</i>	<i>1,000 Head</i>	<i>1,000 Head</i>	<i>1,000 Head</i>	<i>1,000 Head</i>	<i>1,000 Head</i>	<i>1,000 Head</i>	<i>1,000 Head</i>	<i>1,000 Head</i>
CO	40	15	30	20	40	35	35	45	145	115
KS	140	75	145	90	165	140	140	125	590	430
NE	60	55	65	60	100	90	155	145	380	350
TX	220	110	110	100	105	115	45	65	480	390
Oth Sts	110	105	53	42	80	65	120	125	363	337
US	570	360	403	312	490	445	495	505	1,958	1,622
	During June									
	Under 600		600-699		700-799		800 Plus		Total	
	2006	2007	2006	2007	2006	2007	2006	2007	2006	2007
	<i>1,000 Head</i>	<i>1,000 Head</i>	<i>1,000 Head</i>	<i>1,000 Head</i>	<i>1,000 Head</i>	<i>1,000 Head</i>	<i>1,000 Head</i>	<i>1,000 Head</i>	<i>1,000 Head</i>	<i>1,000 Head</i>
CO	50	15	35	20	55	35	30	50	170	120
KS	115	80	105	70	105	125	120	100	445	375
NE	80	75	60	55	90	70	140	130	370	330
TX	190	110	170	135	115	160	55	80	530	485
Oth Sts	130	125	60	45	91	67	150	110	431	347
US	565	405	430	325	456	457	495	470	1,946	1,657

**Cattle on Feed: Number Marketed, 1,000+ Capacity Feedlots,
by Month, State, and United States 2006-2007**

State	During Jul 2006	During Jun 2007	During Jul 2007		
			Number	as % of 2006	as % of Jun
			<i>1,000 Head</i>	<i>Percent</i>	<i>Percent</i>
AZ	34	35	33	97	94
CA	67	60	54	81	90
CO	175	190	175	100	92
ID	40	46	49	123	107
IA	73	61	73	100	120
KS	495	515	450	91	87
NE	410	560	480	117	86
NM	18	17	14	78	82
OK	52	66	67	129	102
SD	38	39	42	111	108
TX	480	475	470	98	99
WA	26	30	32	123	107
Oth Sts	42	46	60	143	130
US	1,950	2,140	1,999	103	93

United States Cattle on Feed 1,000+ Capacity Feedlots Number Marketed

Million Head



**Cattle on Feed: Other Disappearance, 1,000+ Capacity Feedlots,
by Month, State, and United States 2006-2007¹**

State	During Jul 2006	During Jun 2007	During Jul 2007		
			Number	as % of 2006	as % of Jun
	<i>1,000 Head</i>	<i>1,000 Head</i>	<i>1,000 Head</i>	<i>Percent</i>	<i>Percent</i>
AZ	2	1	1	50	100
CA	3	3	2	67	67
CO	10	10	10	100	100
ID	1	1	1	100	100
IA	2	1	1	50	100
KS	15	10	20	133	200
NE	10	10	10	100	100
NM	1	1	1	100	100
OK	1	1	1	100	100
SD	1	3	2	200	67
TX	10	10	10	100	100
WA	1	0	1	100	
Oth Sts	1	1	1	100	100
US	58	52	61	105	117

¹ Includes death loss, movement from feedlots to pasture, and shipments to other feedlots for further feeding.

Terms and Definitions of Cattle on Feed Estimates

Cattle on feed are animals being fed a ration of grain, silage, hay and/or protein supplement for slaughter market that are expected to produce a carcass that will grade select or better. It excludes cattle being "backgrounded only" for later sale as feeders or later placement in another feedlot.

Placements are cattle put into a feedlot, fed a ration which will produce a carcass that will grade select or better, and are intended for the slaughter market.

Marketings are cattle shipped out of feedlots to a slaughter market.

Other disappearance includes death loss, movement from feedlots to pasture, and shipments to other feedlots for further feeding.

Reliability of Cattle on Feed Estimates

Survey Procedures: During January and July all known feedlots in the U.S. with capacity of 1,000 or more head are surveyed to provide data for cattle on feed estimates. During the other months, all known feedlots from 17 States are surveyed. The 17 States account for 98 percent of the cattle on feed in feedlots with capacity of 1,000 or more head.

Estimating Procedures: These cattle on feed estimates were prepared by the Agricultural Statistics Board after reviewing recommendations and analysis submitted by each State office. Regional and State survey data were reviewed for reasonableness with each other and with estimates from the previous month when setting the current estimates.

Revision Policy: Revisions to previous estimates are made to improve month to month relationships. Estimates for the previous month are subject to revision in all States each month when current estimates are made. In February, all monthly estimates for the previous year, and the number of feedlots and annual marketings from two years ago are reviewed and subject to revisions. The reviews are primarily based on slaughter data, state check-off or brand data, and any other data that may have been received after the original estimate was made. Estimates will also be reviewed after data from the Census of Agriculture are available. No revisions will be made after that date and estimates become final.

Reliability: Since all 1,000+ capacity cattle on feed operators in every State are not included in the monthly survey, survey estimates are subject to sampling variability. Survey results are also subject to non-sampling errors such as omissions, duplications, and mistakes in reporting, recording, and processing the data. The effects of these errors cannot be measured directly. They are minimized through rigid quality controls in the data collection process and through a careful review of all reported data for consistency and reasonableness.

To assist users in evaluating the reliability of estimates in this report, the "**Root Mean Square Error**" is shown for selected items in the following table. The "Root Mean Square Error" is a statistical measure based on past performance and is computed using the differences between first and latest estimates. The "Root Mean Square Error" for cattle on feed inventory estimates over the past 10 years is .1 percent. This means that chances are 2 out of 3 that the final estimate will not be above or below the current estimate of 10.3 million head by more than .1 percent. Chances are 9 out of 10 that the difference will not exceed .2 percent.

The following table also shows a 10 year record of the range of differences between first and latest estimates for selected items. Using estimates of number on feed as an example, changes between the first estimate and the latest estimate during the past 10 years have averaged 8,000 head, ranging from 0

to 20,000 head. During this period the initial estimate has been below the final estimate 6 times, and above the final estimate 1 time. This does not imply that the initial estimate is likely to understate or overstate final inventory.

Reliability of U.S. August 1 Cattle on Feed Estimates ¹

Item	Root Mean Square Error	90% Confidence Level		Difference Between First and Final Estimates ¹			Number of Years	
		Percent	(000) Head	Average	Smallest	Largest	First Above Final	First Below Final
	<i>Percent</i>	<i>Percent</i>	<i>1,000 Head</i>	<i>1,000 Head</i>	<i>1,000 Head</i>	<i>1,000 Head</i>	<i>Number</i>	<i>Number</i>
Number on Feed	0.1	0.2	23.8	8	0	20	1	6
Placements	0.3	0.5	9.7	3	0	11	3	2
Marketings	0.3	0.6	11.1	3	0	20	2	1

¹ Based on data for the past 10 years.

Information Contacts

Listed below are the commodity specialists in the Livestock Branch of the National Agricultural Statistics Service to contact for additional information.

- Dan Kerestes, Chief, Livestock Branch (202) 720-3570
- Shawn Clark, Head, Livestock Section (202) 720-3570
 - Bruce Boess - Hogs and Pigs (202) 720-3106
 - Vacant - Dairy Products (202) 690-3236
 - Jason Hardegree - Milk Production and Milk Cows (202) 720-3278
 - Scott Hollis - Sheep & Lambs, Goats & Kids (202) 720-4751
 - Mike Miller - Cattle, Cattle on Feed (202) 720-3040
 - Benita Hodge - Livestock Slaughter (515) 284-4340
 - Charmaine Wilson - Dairy Products Prices (202) 690-2168

ACCESS TO REPORTS!!

For your convenience, there are several ways to obtain NASS reports, data products, and services:

INTERNET ACCESS

All NASS reports are available free of charge on the worldwide Internet. For access, connect to the Internet and go to the NASS Home Page at: www.nass.usda.gov.

E-MAIL SUBSCRIPTION

All NASS reports are available by subscription free of charge direct to your e-mail address. Starting with the NASS Home Page at www.nass.usda.gov, under the right navigation, *Receive reports by Email*, click on **National** or **State**. Follow the instructions on the screen.

PRINTED REPORTS OR DATA PRODUCTS

CALL OUR TOLL-FREE ORDER DESK: 800-999-6779 (U.S. and Canada)
Other areas, please call 703-605-6220 FAX: 703-605-6900
(Visa, MasterCard, check, or money order acceptable for payment.)

ASSISTANCE

For **assistance** with general agricultural statistics or further information about NASS or its products or services, contact the **Agricultural Statistics Hotline** at **800-727-9540**, 7:30 a.m. to 4:00 p.m. ET, or e-mail: nass@nass.usda.gov.

The U.S. Department of Agriculture (USDA) prohibits discrimination in all its programs and activities on the basis of race, color, national origin, age, disability, and where applicable, sex, marital status, familial status, parental status, religion, sexual orientation, genetic information, political beliefs, reprisal, or because all or a part of an individual's income is derived from any public assistance program. (Not all prohibited bases apply to all programs.) Persons with disabilities who require alternative means for communication of program information (Braille, large print, audiotape, etc.) should contact USDA's TARGET Center at (202) 720-2600 (voice and TDD).

To file a complaint of discrimination, write to USDA, Director, Office of Civil Rights, 1400 Independence Avenue, S.W., Washington, D.C. 20250-9410, or call (800) 795-3272 (voice) or (202) 720-6382 (TDD). USDA is an equal opportunity provider and employer.

USDA Data Users' Meeting

October 29, 2007

Crowne Plaza Chicago O'Hare

Rosemont, Illinois

(847) 671-6350

The USDA's National Agricultural Statistics Service will be organizing an open forum for data users. The purpose will be to provide updates on pending changes in the various statistical and information programs and seek comments and input from data users. Other USDA agencies to be represented will include the Agricultural Marketing Service, the Economic Research Service, the Foreign Agricultural Service, and World Agricultural Outlook Board. The Foreign Trade Division from the Census Bureau will also be included in the meeting.

For registration details or additional information for the Data Users' Meeting, see the NASS homepage at www.nass.usda.gov/forum/ or contact Marjorie Taylor (NASS) at (202) 690-8141 or at marjorie_taylor@nass.usda.gov.

This Data Users' Meeting precedes an Industry Outlook meeting that will be held at the same location on October 30, 2007. The Outlook meeting brings together analysts from various commodity sectors to discuss the outlook situation. For registration details or additional information for the Industry Outlook Meeting see the Livestock and Marketing Information Center (LMIC) homepage at www.lmic.info or contact Jim Robb at (720) 544-2941 or at robb@lmic.info.