



# NASS

FACT FINDERS FOR AGRICULTURE  
UNITED STATES DEPARTMENT OF AGRICULTURE

Washington, D.C.

## Cattle On Feed

---

Released September 21, 2007, by the National Agricultural Statistics Service (NASS), Agricultural Statistics Board, U.S. Department of Agriculture. For information on *Cattle on Feed* call Mike Miller at (202) 720-3040, office hours 7:30 a.m. to 4:00 p.m. ET.

### U.S. Cattle on Feed Down 6 Percent

**Cattle and calves on feed** for slaughter market in the United States for feedlots with capacity of 1,000 or more head totaled 10.3 million head on September 1, 2007. The inventory was 6 percent below September 1, 2006 but 3 percent above September 1, 2005.

**Placements** in feedlots during August totaled 2.12 million, 7 percent below 2006 but 6 percent above 2005. Net placements were 2.07 million. During August, placements of cattle and calves weighing less than 600 pounds were 490,000, 600-699 pounds were 440,000, 700-799 pounds were 549,000, and 800 pounds and greater were 640,000.

**Marketings** of fed cattle during August totaled 2.07 million, virtually unchanged from 2006 but 2 percent above 2005.

**Other disappearance** totaled 50,000 during August, 15 percent below 2006 and 6 percent below 2005.

**Cattle on Feed: Number on Feed, Placements, Marketings, and  
Other Disappearance, 1,000+ Capacity Feedlots,  
United States, September 1, 2005-2007**

Item	Number			2007 as % of	
	2005	2006	2007	2005	2006
	<i>1,000 Head</i>	<i>1,000 Head</i>	<i>1,000 Head</i>	<i>Percent</i>	<i>Percent</i>
On Feed Aug 1 <sup>1</sup>	10,093	10,822	10,299	102	95
Placed on Feed During Aug	1,993	2,290	2,119	106	93
Fed Cattle Marketed During Aug	2,033	2,067	2,066	102	100
Other Disappearance During Aug <sup>2</sup>	53	59	50	94	85
On Feed Sep 1 <sup>1</sup>	10,000	10,986	10,302	103	94

<sup>1</sup> Cattle and calves on feed are animals for slaughter market being fed a ration of grain or other concentrates and are expected to produce a carcass that will grade select or better.

<sup>2</sup> Includes death loss, movement from feedlots to pasture, and shipments to other feedlots for further feeding.

**Cattle on Feed: Number on Feed, Placements, Marketings, and  
Other Disappearance, 1,000+ Capacity Feedlots,  
United States, August 1, 2005-2007**

Item	Number			2007 as % of	
	2005	2006	2007	2005	2006
	<i>1,000 Head</i>	<i>1,000 Head</i>	<i>1,000 Head</i>	<i>Percent</i>	<i>Percent</i>
On Feed Jul 1 <sup>1</sup>	10,394	10,872	10,737	103	99
Placed on Feed During Jul	1,678	1,958	1,622	97	83
Fed Cattle Marketed During Jul	1,918	1,950	1,999	104	103
Other Disappearance During Jul <sup>2</sup>	61	58	61	100	105
On Feed Aug 1 <sup>1</sup>	10,093	10,822	10,299	102	95

<sup>1</sup> Cattle and calves on feed are animals for slaughter market being fed a ration of grain or other concentrates and are expected to produce a carcass that will grade select or better.

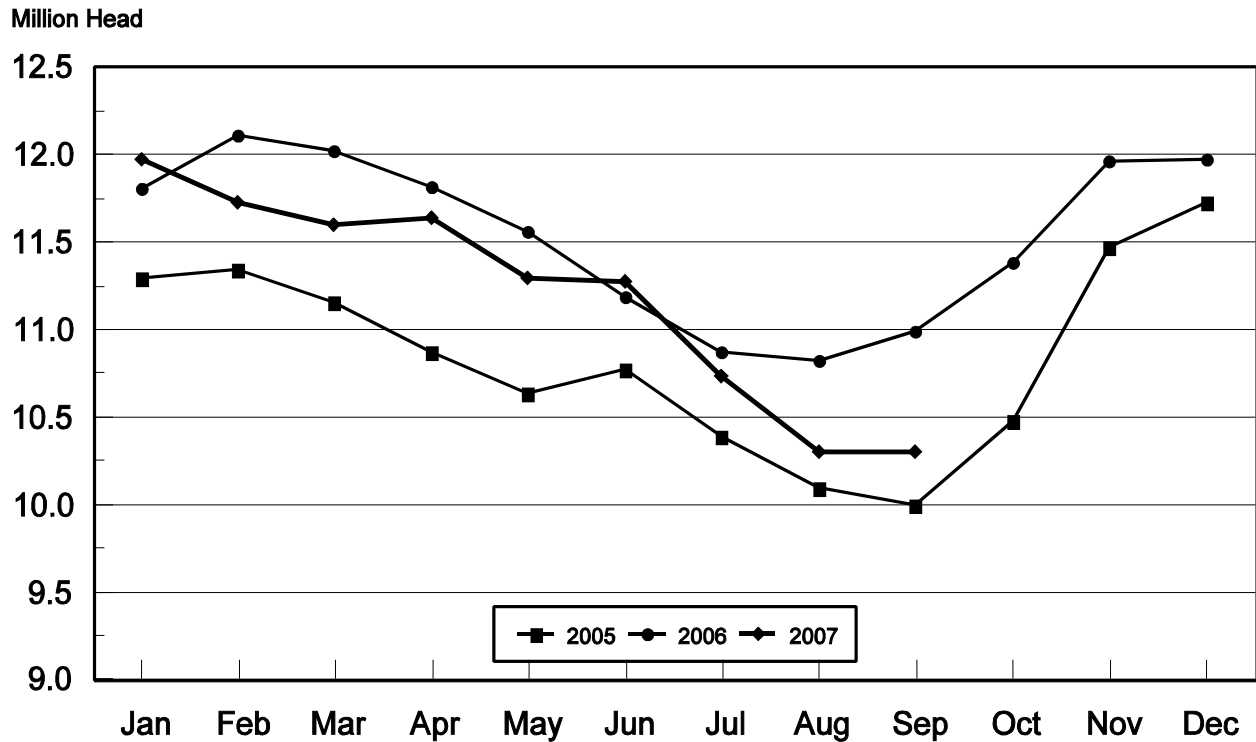
<sup>2</sup> Includes death loss, movement from feedlots to pasture, and shipments to other feedlots for further feeding.

**Cattle on Feed: Number on Feed, 1,000+ Capacity Feedlots,  
by Month, State, and United States 2006-2007 <sup>1</sup>**

State	Sep 1, 2006	Aug 1, 2007	Sep 1, 2007		
			Number	as % of 2006	as % of Aug
	<i>1,000 Head</i>	<i>1,000 Head</i>	<i>1,000 Head</i>	<i>Percent</i>	<i>Percent</i>
AZ	336	341	348	104	102
CA	520	540	530	102	98
CO	960	870	850	89	98
ID	235	205	205	87	100
IA	455	500	490	108	98
KS	2,390	2,100	2,140	90	102
NE	2,050	1,910	1,930	94	101
NM	142	129	131	92	102
OK	345	305	310	90	102
SD	155	175	175	113	100
TX	2,960	2,780	2,740	93	99
WA	158	144	148	94	103
Oth Sts	280	300	305	109	102
US	10,986	10,299	10,302	94	100

<sup>1</sup> Cattle and calves on feed are animals for slaughter market being fed a ration of grain or other concentrates and are expected to produce a carcass that will grade select or better.

**United States Cattle on Feed  
1,000+ Capacity Feedlots**

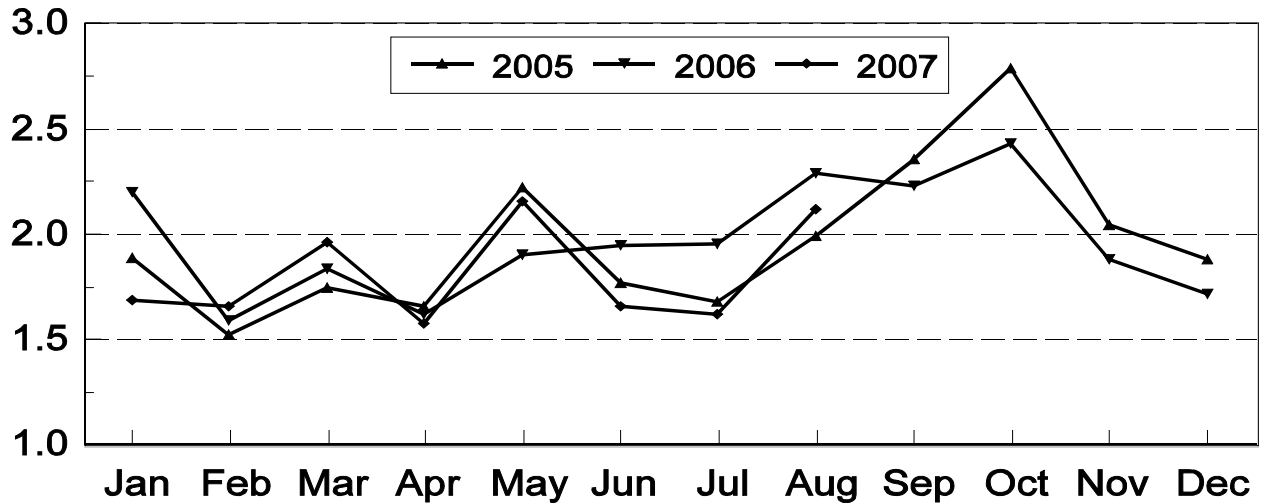


**Cattle on Feed: Number Placed on Feed, 1,000+ Capacity Feedlots,  
by Month, State, and United States 2006-2007**

State	During Aug 2006	During Jul 2007	During Aug 2007		
			Number	as % of 2006	as % of Jul
	<i>1,000 Head</i>	<i>1,000 Head</i>	<i>1,000 Head</i>	<i>Percent</i>	<i>Percent</i>
AZ	30	32	36	120	113
CA	66	51	54	82	106
CO	200	115	170	85	148
ID	55	35	48	87	137
IA	80	64	71	89	111
KS	590	430	520	88	121
NE	470	350	465	99	133
NM	26	12	22	85	183
OK	77	48	75	97	156
SD	30	22	37	123	168
TX	570	390	520	91	133
WA	35	27	35	100	130
Oth Sts	61	46	66	108	143
US	2,290	1,622	2,119	93	131

**United States Cattle on Feed  
1,000+ Capacity Feedlots Number Placed**

Million Head



**Cattle on Feed: Number Placed on Feed by Weight Group, 1,000+ Capacity  
Feedlots, by Month, State, and United States, 2006-2007**

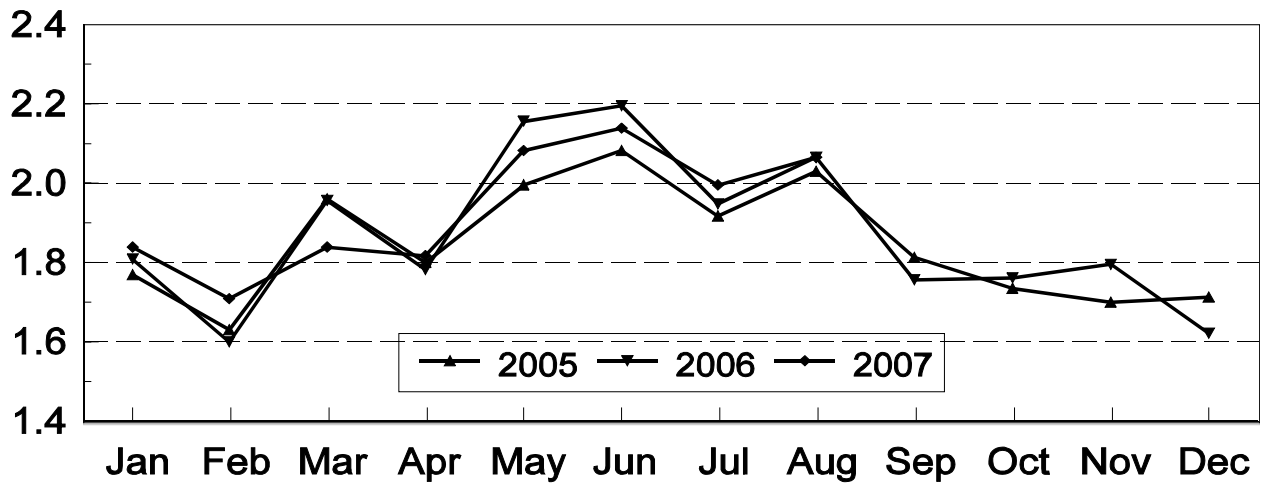
State	During August									
	Under 600		600-699		700-799		800 Plus		Total	
	2006	2007	2006	2007	2006	2007	2006	2007	2006	2007
	<i>1,000 Head</i>	<i>1,000 Head</i>	<i>1,000 Head</i>	<i>1,000 Head</i>	<i>1,000 Head</i>	<i>1,000 Head</i>	<i>1,000 Head</i>	<i>1,000 Head</i>	<i>1,000 Head</i>	<i>1,000 Head</i>
CO	50	25	25	30	50	40	75	75	200	170
KS	140	100	120	120	185	160	145	140	590	520
NE	80	75	75	70	115	115	200	205	470	465
TX	280	160	140	160	95	140	55	60	570	520
Oth Sts	130	130	70	60	90	94	170	160	460	444
US	680	490	430	440	535	549	645	640	2,290	2,119
	During July									
	Under 600		600-699		700-799		800 Plus		Total	
	2006	2007	2006	2007	2006	2007	2006	2007	2006	2007
	<i>1,000 Head</i>	<i>1,000 Head</i>	<i>1,000 Head</i>	<i>1,000 Head</i>	<i>1,000 Head</i>	<i>1,000 Head</i>	<i>1,000 Head</i>	<i>1,000 Head</i>	<i>1,000 Head</i>	<i>1,000 Head</i>
CO	40	15	30	20	40	35	35	45	145	115
KS	140	75	145	90	165	140	140	125	590	430
NE	60	55	65	60	100	90	155	145	380	350
TX	220	110	110	100	105	115	45	65	480	390
Oth Sts	110	105	53	42	80	65	120	125	363	337
US	570	360	403	312	490	445	495	505	1,958	1,622

**Cattle on Feed: Number Marketed, 1,000+ Capacity Feedlots,  
by Month, State, and United States 2006-2007**

State	During Aug 2006	During Jul 2007	During Aug 2007		
			Number	as % of 2006	as % of Jul
	<i>1,000 Head</i>	<i>1,000 Head</i>	<i>1,000 Head</i>	<i>Percent</i>	<i>Percent</i>
AZ	31	33	28	90	85
CA	59	54	62	105	115
CO	175	175	185	106	106
ID	44	49	47	107	96
IA	69	73	80	116	110
KS	540	450	465	86	103
NE	360	480	435	121	91
NM	26	14	19	73	136
OK	76	67	69	91	103
SD	37	42	36	97	86
TX	570	470	550	96	117
WA	30	32	30	100	94
Oth Sts	50	60	60	120	100
US	2,067	1,999	2,066	100	103

# United States Cattle on Feed 1,000+ Capacity Feedlots Number Marketed

Million Head



**Cattle on Feed: Other Disappearance, 1,000+ Capacity Feedlots,  
by Month, State, and United States 2006-2007<sup>1</sup>**

State	During Aug 2006	During Jul 2007	During Aug 2007		
			Number	as % of 2006	as % of Jul
	<i>1,000 Head</i>	<i>1,000 Head</i>	<i>1,000 Head</i>	<i>Percent</i>	<i>Percent</i>
AZ	2	1	1	50	100
CA	2	2	2	100	100
CO	5	10	5	100	50
ID	1	1	1	100	100
IA	1	1	1	100	100
KS	20	20	15	75	75
NE	10	10	10	100	100
NM	2	1	1	50	100
OK	1	1	1	100	100
SD	3	2	1	33	50
TX	10	10	10	100	100
WA	1	1	1	100	100
Oth Sts	1	1	1	100	100
US	59	61	50	85	82

<sup>1</sup> Includes death loss, movement from feedlots to pasture, and shipments to other feedlots for further feeding.

## Terms and Definitions of Cattle on Feed Estimates

**Cattle on feed** are animals being fed a ration of grain, silage, hay and/or protein supplement for slaughter market that are expected to produce a carcass that will grade select or better. It excludes cattle being "backgrounded only" for later sale as feeders or later placement in another feedlot.

**Placements** are cattle put into a feedlot, fed a ration which will produce a carcass that will grade select or better, and are intended for the slaughter market.

**Marketings** are cattle shipped out of feedlots to a slaughter market.

**Other disappearance** includes death loss, movement from feedlots to pasture, and shipments to other feedlots for further feeding.

## Reliability of Cattle on Feed Estimates

**Survey Procedures:** During January and July all known feedlots in the U.S. with capacity of 1,000 or more head are surveyed to provide data for cattle on feed estimates. During the other months, all known feedlots from 17 States are surveyed. The 17 States account for 98 percent of the cattle on feed in feedlots with capacity of 1,000 or more head.

**Estimating Procedures:** These cattle on feed estimates were prepared by the Agricultural Statistics Board after reviewing recommendations and analysis submitted by each State office. Regional and State survey data were reviewed for reasonableness with each other and with estimates from the previous month when setting the current estimates.

**Revision Policy:** Revisions to previous estimates are made to improve month to month relationships. Estimates for the previous month are subject to revision in all States each month when current estimates are made. In February, all monthly estimates for the previous year, and the number of feedlots and annual marketings from two years ago are reviewed and subject to revisions. The reviews are primarily based on slaughter data, state check-off or brand data, and any other data that may have been received after the original estimate was made. Estimates will also be reviewed after data from the Census of Agriculture are available. No revisions will be made after that date and estimates become final.

**Reliability:** Since all 1,000+ capacity cattle on feed operators in every State are not included in the monthly survey, survey estimates are subject to sampling variability. Survey results are also subject to non-sampling errors such as omissions, duplications, and mistakes in reporting, recording, and processing the data. The effects of these errors cannot be measured directly. They are minimized through rigid quality controls in the data collection process and through a careful review of all reported data for consistency and reasonableness.

To assist users in evaluating the reliability of estimates in this report, the "**Root Mean Square Error**" is shown for selected items in the following table. The "Root Mean Square Error" is a statistical measure based on past performance and is computed using the differences between first and latest estimates. The "Root Mean Square Error" for cattle on feed inventory estimates over the past 10 years is .1 percent. This means that chances are 2 out of 3 that the final estimate will not be above or below the current estimate of 10.3 million head by more than .1 percent. Chances are 9 out of 10 that the difference will not exceed .3 percent.

The following table also shows a 10 year record of the range of differences between first and latest estimates for selected items. Using estimates of number on feed as an example, changes between the first estimate and the latest estimate during the past 10 years have averaged 11,000 head, ranging from 0

to 30,000 head. During this period the initial estimate has been below the final estimate 5 times, and above the final estimate 2 times. This does not imply that the initial estimate is likely to understate or overstate final inventory.

**Reliability of U.S. September 1 Cattle on Feed Estimates <sup>1</sup>**

Item	Root Mean Square Error	90% Confidence Level		Difference Between First and Final Estimates <sup>1</sup>			Number of Years	
		Percent	(000) Head	Average	Smallest	Largest	First Above Final	First Below Final
	<i>Percent</i>	<i>Percent</i>	<i>1,000 Head</i>	<i>1,000 Head</i>	<i>1,000 Head</i>	<i>1,000 Head</i>	<i>Number</i>	<i>Number</i>
Number on Feed	0.1	0.3	29.4	11	0	30	2	5
Placements	0.6	1.1	24.5	8	0	32	1	5
Marketings	0.5	0.9	18.1	7	0	20	1	6

<sup>1</sup> Based on data for the past 10 years.

**Information Contacts**

Listed below are the commodity specialists in the Livestock Branch of the National Agricultural Statistics Service to contact for additional information.

- Dan Kerestes, Chief, Livestock Branch . . . . . (202) 720-3570
- Shawn Clark, Head, Livestock Section . . . . . (202) 720-3570
  - Bruce Boess - Hogs and Pigs . . . . . (202) 720-3106
  - Vacant - Dairy Products . . . . . (202) 690-3236
  - Jason Hardegree - Milk Production and Milk Cows . . . . . (202) 720-3278
  - Scott Hollis - Sheep & Lambs, Goats & Kids . . . . . (202) 720-4751
  - Mike Miller - Cattle, Cattle on Feed . . . . . (202) 720-3040
  - Benita Hodge - Livestock Slaughter . . . . . (515) 284-4340
  - Charmaine Wilson - Dairy Products Prices . . . . . (202) 690-2168



## ACCESS TO REPORTS!!

---

For your convenience, there are several ways to obtain NASS reports, data products, and services:

### INTERNET ACCESS

All NASS reports are available free of charge on the worldwide Internet. For access, connect to the Internet and go to the NASS Home Page at: [www.nass.usda.gov](http://www.nass.usda.gov).

### E-MAIL SUBSCRIPTION

All NASS reports are available by subscription free of charge direct to your e-mail address. Starting with the NASS Home Page at [www.nass.usda.gov](http://www.nass.usda.gov), under the right navigation, *Receive reports by Email*, click on **National** or **State**. Follow the instructions on the screen.

-----

### PRINTED REPORTS OR DATA PRODUCTS

**CALL OUR TOLL-FREE ORDER DESK: 800-999-6779 (U.S. and Canada)**  
**Other areas, please call 703-605-6220      FAX: 703-605-6900**  
**(Visa, MasterCard, check, or money order acceptable for payment.)**

-----

### ASSISTANCE

For **assistance** with general agricultural statistics or further information about NASS or its products or services, contact the **Agricultural Statistics Hotline** at **800-727-9540**, 7:30 a.m. to 4:00 p.m. ET, or e-mail: [nass@nass.usda.gov](mailto:nass@nass.usda.gov).

The U.S. Department of Agriculture (USDA) prohibits discrimination in all its programs and activities on the basis of race, color, national origin, age, disability, and where applicable, sex, marital status, familial status, parental status, religion, sexual orientation, genetic information, political beliefs, reprisal, or because all or a part of an individual's income is derived from any public assistance program. (Not all prohibited bases apply to all programs.) Persons with disabilities who require alternative means for communication of program information (Braille, large print, audiotape, etc.) should contact USDA's TARGET Center at (202) 720-2600 (voice and TDD).

To file a complaint of discrimination write to USDA, Director, Office of Civil Rights, 1400 Independence Avenue, S.W., Washington, D.C. 20250-9410 or call (800) 795-3272 (voice) or (202) 720-6382 (TDD). USDA is an equal opportunity provider and employer.

## **USDA Data Users' Meeting**

**October 29, 2007**

**Crowne Plaza Chicago O'Hare**

**Rosemont, Illinois**

**(847) 671-6350**

The USDA's National Agricultural Statistics Service will be organizing an open forum for data users. The purpose will be to provide updates on pending changes in the various statistical and information programs and seek comments and input from data users. Other USDA agencies to be represented will include the Agricultural Marketing Service, the Economic Research Service, the Foreign Agricultural Service, and World Agricultural Outlook Board. The Foreign Trade Division from the Census Bureau will also be included in the meeting.

For registration details or additional information for the Data Users' Meeting, see the NASS homepage at [www.nass.usda.gov/forum/](http://www.nass.usda.gov/forum/) or contact Marjorie Taylor (NASS) at (202) 690-8141 or at [marjorie\\_taylor@nass.usda.gov](mailto:marjorie_taylor@nass.usda.gov).

This Data Users' Meeting precedes an Industry Outlook meeting that will be held at the same location on October 30, 2007. The Outlook meeting brings together analysts from various commodity sectors to discuss the outlook situation. For registration details or additional information for the Industry Outlook Meeting see the Livestock and Marketing Information Center (LMIC) homepage at [www.lmic.info](http://www.lmic.info) or contact Jim Robb at (720) 544-2941 or at [robb@lmic.info](mailto:robb@lmic.info).