



Cattle On Feed

Released October 19, 2007, by the National Agricultural Statistics Service (NASS), Agricultural Statistics Board, U.S. Department of Agriculture. For information on *Cattle on Feed* call Mike Miller at (202) 720-3040, office hours 7:30 a.m. to 4:00 p.m. ET.

U.S. Cattle on Feed Down 4 Percent

Cattle and calves on feed for slaughter market in the United States for feedlots with capacity of 1,000 or more head totaled 11.0 million head on October 1, 2007. The inventory was 4 percent below October 1, 2006 but 5 percent above October 1, 2005. The inventory included 6.83 million steers and steer calves, down 5 percent from the previous year. This group accounted for 62 percent of the total inventory. Heifers and heifer calves accounted for 4.07 million head, down 1 percent from 2006.

Placements in feedlots during September totaled 2.43 million, 9 percent above 2006 and 3 percent above 2005. Net placements were 2.37 million head. During September, placements of cattle and calves weighing less than 600 pounds were 610,000, 600-699 pounds were 505,000, 700-799 pounds were 570,000, and 800 pounds and greater were 740,000.

Marketings of fed cattle during September totaled 1.71 million, 3 percent below 2006 and 6 percent below 2005. This is the second lowest fed cattle marketings for the month of September since the series began in 1996.

Other disappearance totaled 54,000 during September, 21 percent below 2006 and 5 percent below 2005.

**Cattle on Feed: Number on Feed, Placements, Marketings, and
Other Disappearance, 1,000+ Capacity Feedlots,
United States, October 1, 2005-2007**

Item	Number			2007 as % of	
	2005	2006	2007	2005	2006
	<i>1,000 Head</i>	<i>1,000 Head</i>	<i>1,000 Head</i>	<i>Percent</i>	<i>Percent</i>
On Feed Sep 1 ¹	10,000	10,986	10,302	103	94
Placed on Feed During Sep	2,355	2,227	2,425	103	109
Fed Cattle Marketed During Sep	1,816	1,760	1,706	94	97
Other Disappearance During Sep ²	57	68	54	95	79
On Feed Oct 1 ¹	10,482	11,385	10,967	105	96

¹ Cattle and calves on feed are animals for slaughter market being fed a ration of grain or other concentrates and are expected to produce a carcass that will grade select or better.

² Includes death loss, movement from feedlots to pasture, and shipments to other feedlots for further feeding.

**Cattle on Feed: Number on Feed, Placements, Marketings, and
Other Disappearance, 1,000+ Capacity Feedlots,
United States, September 1, 2005-2007**

Item	Number			2007 as % of	
	2005	2006	2007	2005	2006
	<i>1,000 Head</i>	<i>1,000 Head</i>	<i>1,000 Head</i>	<i>Percent</i>	<i>Percent</i>
On Feed Aug 1 ¹	10,093	10,822	10,299	102	95
Placed on Feed During Aug	1,993	2,290	2,119	106	93
Fed Cattle Marketed During Aug	2,033	2,067	2,066	102	100
Other Disappearance During Aug ²	53	59	50	94	85
On Feed Sep 1 ¹	10,000	10,986	10,302	103	94

¹ Cattle and calves on feed are animals for slaughter market being fed a ration of grain or other concentrates and are expected to produce a carcass that will grade select or better.

² Includes death loss, movement from feedlots to pasture, and shipments to other feedlots for further feeding.

**Cattle on Feed: Number on Feed by Class, 1,000+ Capacity Feedlots,
United States, October 1, 2005-2007**

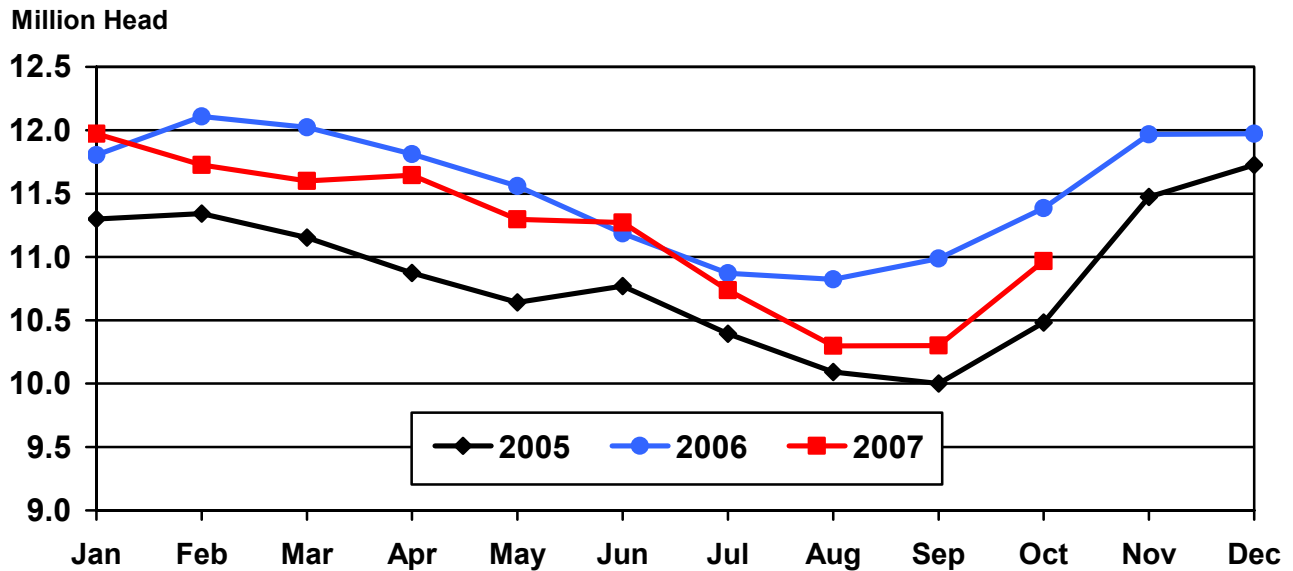
Item	Number			2007 as % of	
	2005	2006	2007	2005	2006
	<i>1,000 Head</i>	<i>1,000 Head</i>	<i>1,000 Head</i>	<i>Percent</i>	<i>Percent</i>
Class on Feed Oct 1					
Steers and Steer Calves	6,872	7,197	6,832	99	95
Heifers and Heifer Calves	3,553	4,122	4,070	115	99
Cows and Bulls	57	66	65	114	98

**Cattle on Feed: Number on Feed, 1,000+ Capacity Feedlots,
by Month, State, and United States 2006-2007 ¹**

State	Oct 1, 2006	Sep 1, 2007	Oct 1, 2007		
			Number	as % of 2006	as % of Sep
	<i>1,000 Head</i>	<i>1,000 Head</i>	<i>1,000 Head</i>	<i>Percent</i>	<i>Percent</i>
AZ	336	348	350	104	101
CA	525	530	540	103	102
CO	1,060	850	940	89	111
ID	265	205	210	79	102
IA	460	490	510	111	104
KS	2,450	2,140	2,310	94	108
NE	2,220	1,930	2,140	96	111
NM	143	131	133	93	102
OK	355	310	325	92	105
SD	170	175	180	106	103
TX	2,930	2,740	2,840	97	104
WA	171	148	154	90	104
Oth Sts	300	305	335	112	110
US	11,385	10,302	10,967	96	106

¹ Cattle and calves on feed are animals for slaughter market being fed a ration of grain or other concentrates and are expected to produce a carcass that will grade select or better.

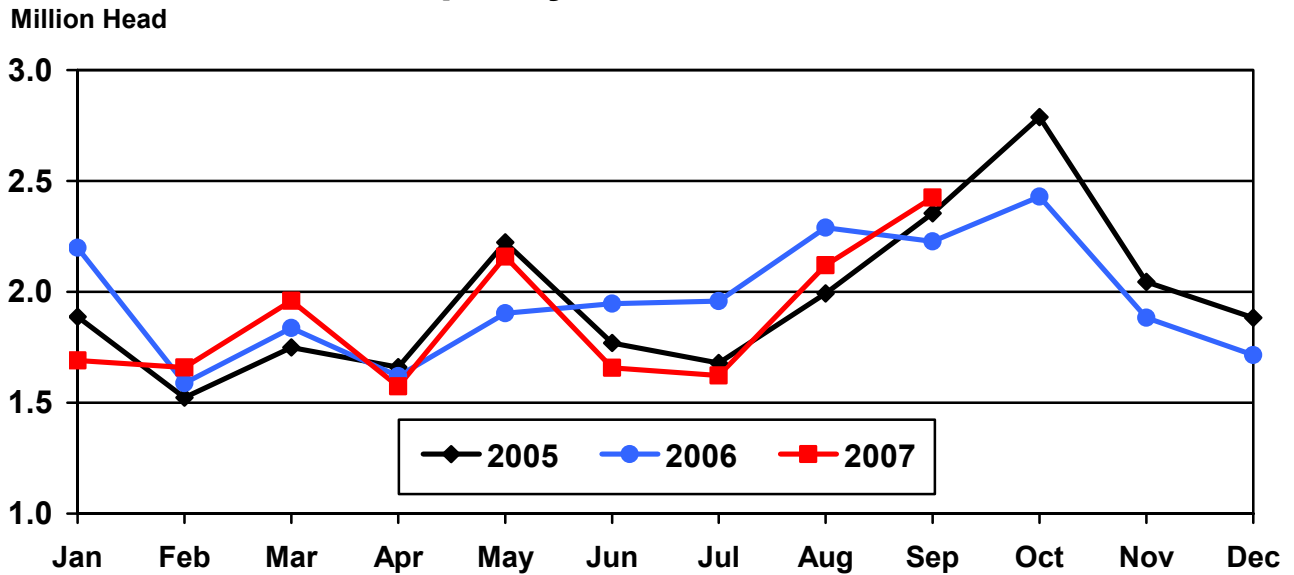
United States Cattle on Feed 1,000+ Capacity Feedlots



**Cattle on Feed: Number Placed on Feed, 1,000+ Capacity Feedlots,
by Month, State, and United States 2006-2007**

State	During Sep 2006	During Aug 2007	During Sep 2007		
			Number	as % of 2006	as % of Aug
	<i>1,000 Head</i>	<i>1,000 Head</i>	<i>1,000 Head</i>	<i>Percent</i>	<i>Percent</i>
AZ	28	36	28	100	78
CA	72	54	60	83	111
CO	240	170	265	110	156
ID	72	48	48	67	100
IA	81	71	100	123	141
KS	500	520	540	108	104
NE	500	465	540	108	116
NM	21	22	17	81	77
OK	71	75	72	101	96
SD	50	37	43	86	116
TX	495	520	590	119	113
WA	37	35	36	97	103
Oth Sts	60	66	86	143	130
US	2,227	2,119	2,425	109	114

**United States Cattle on Feed
1,000+ Capacity Feedlots Number Placed**



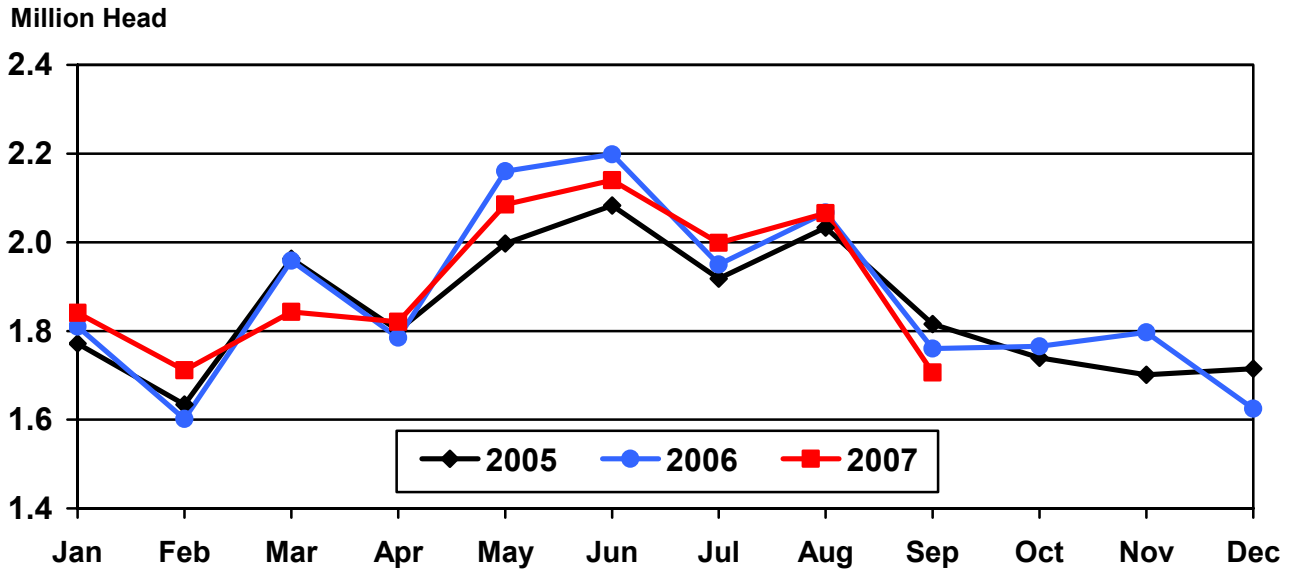
**Cattle on Feed: Number Placed on Feed by Weight Group, 1,000+ Capacity
Feedlots, by Month, State, and United States, 2006-2007**

State	During September									
	Under 600		600-699		700-799		800 Plus		Total	
	2006	2007	2006	2007	2006	2007	2006	2007	2006	2007
	<i>1,000 Head</i>	<i>1,000 Head</i>	<i>1,000 Head</i>	<i>1,000 Head</i>	<i>1,000 Head</i>	<i>1,000 Head</i>	<i>1,000 Head</i>	<i>1,000 Head</i>	<i>1,000 Head</i>	<i>1,000 Head</i>
CO	45	35	35	40	50	65	110	125	240	265
KS	185	140	105	140	100	130	110	130	500	540
NE	105	100	70	80	120	120	205	240	500	540
TX	230	190	135	170	85	165	45	65	495	590
Oth Sts	155	145	67	75	95	90	175	180	492	490
US	720	610	412	505	450	570	645	740	2,227	2,425
	During August									
	Under 600		600-699		700-799		800 Plus		Total	
	2006	2007	2006	2007	2006	2007	2006	2007	2006	2007
	<i>1,000 Head</i>	<i>1,000 Head</i>	<i>1,000 Head</i>	<i>1,000 Head</i>	<i>1,000 Head</i>	<i>1,000 Head</i>	<i>1,000 Head</i>	<i>1,000 Head</i>	<i>1,000 Head</i>	<i>1,000 Head</i>
CO	50	25	25	30	50	40	75	75	200	170
KS	140	100	120	120	185	160	145	140	590	520
NE	80	75	75	70	115	115	200	205	470	465
TX	280	160	140	160	95	140	55	60	570	520
Oth Sts	130	130	70	60	90	94	170	160	460	444
US	680	490	430	440	535	549	645	640	2,290	2,119

**Cattle on Feed: Number Marketed, 1,000+ Capacity Feedlots,
by Month, State, and United States 2006-2007**

State	During Sep 2006	During Aug 2007	During Sep 2007		
			Number	as % of 2006	as % of Aug
	<i>1,000 Head</i>	<i>1,000 Head</i>	<i>1,000 Head</i>	<i>Percent</i>	<i>Percent</i>
AZ	26	28	24	92	86
CA	64	62	47	73	76
CO	135	185	170	126	92
ID	41	47	41	100	87
IA	73	80	79	108	99
KS	420	465	355	85	76
NE	320	435	320	100	74
NM	16	19	13	81	68
OK	59	69	56	95	81
SD	34	36	37	109	103
TX	510	550	480	94	87
WA	23	30	29	126	97
Oth Sts	39	60	55	141	92
US	1,760	2,066	1,706	97	83

United States Cattle on Feed 1,000+ Capacity Feedlots Number Marketed



**Cattle on Feed: Other Disappearance, 1,000+ Capacity Feedlots,
by Month, State, and United States 2006-2007¹**

State	During Sep 2006	During Aug 2007	During Sep 2007		
			Number	as % of 2006	as % of Aug
	<i>1,000 Head</i>	<i>1,000 Head</i>	<i>1,000 Head</i>	<i>Percent</i>	<i>Percent</i>
AZ	2	1	2	100	200
CA	3	2	3	100	150
CO	5	5	5	100	100
ID	1	1	2	200	200
IA	3	1	1	33	100
KS	20	15	15	75	100
NE	10	10	10	100	100
NM	4	1	2	50	200
OK	2	1	1	50	100
SD	1	1	1	100	100
TX	15	10	10	67	100
WA	1	1	1	100	100
Oth Sts	1	1	1	100	100
US	68	50	54	79	108

¹ Includes death loss, movement from feedlots to pasture, and shipments to other feedlots for further feeding.

**Cattle on Feed: Number on Feed by Class, 1,000+ Capacity Feedlots,
by Quarter, State, and United States, 2006-2007**

State	Steers & Steer Calves			Heifers & Heifer Calves			Cows and Bulls		
	Oct 1, 2006	Jul 1, 2007	Oct 1, 2007	Oct 1, 2006	Jul 1, 2007	Oct 1, 2007	Oct 1, 2006	Jul 1, 2007	Oct 1, 2007
	<i>1,000 Head</i>	<i>1,000 Head</i>	<i>1,000 Head</i>	<i>1,000 Head</i>	<i>1,000 Head</i>	<i>1,000 Head</i>	<i>1,000 Head</i>	<i>1,000 Head</i>	<i>1,000 Head</i>
AZ	334	342	349	2	1	1	0	0	0
CA	480	490	490	45	54	50	0	1	0
CO	730	590	575	325	345	360	5	5	5
ID	172	133	114	92	83	91	1	4	5
IA	310	340	350	149	169	159	1	1	1
KS	1,280	1,090	1,220	1,150	1,030	1,065	20	20	25
NE	1,250	1,230	1,280	950	810	850	20	10	10
NM	82	84	82	61	48	51	0	0	0
OK	245	225	220	110	100	105	0	0	0
SD	82	98	87	74	80	80	14	19	13
TX	1,900	1,780	1,740	1,027	1,087	1,097	3	3	3
WA	97	90	80	73	59	73	1	1	1
Oth Sts	235	250	245	64	62	88	1	3	2
US	7,197	6,742	6,832	4,122	3,928	4,070	66	67	65

Terms and Definitions of Cattle on Feed Estimates

Cattle on feed are animals being fed a ration of grain, silage, hay and/or protein supplement for slaughter market that are expected to produce a carcass that will grade select or better. It excludes cattle being "backgrounded only" for later sale as feeders or later placement in another feedlot.

Placements are cattle put into a feedlot, fed a ration which will produce a carcass that will grade select or better, and are intended for the slaughter market.

Marketings are cattle shipped out of feedlots to a slaughter market.

Other disappearance includes death loss, movement from feedlots to pasture, and shipments to other feedlots for further feeding.

Reliability of Cattle on Feed Estimates

Survey Procedures: During January and July all known feedlots in the U.S. with capacity of 1,000 or more head are surveyed to provide data for cattle on feed estimates. During the other months, all known feedlots from 17 States are surveyed. The 17 States account for 98 percent of the cattle on feed in feedlots with capacity of 1,000 or more head.

Estimating Procedures: These cattle on feed estimates were prepared by the Agricultural Statistics Board after reviewing recommendations and analysis submitted by each State office. Regional and State survey data were reviewed for reasonableness with each other and with estimates from the previous month when setting the current estimates.

Revision Policy: Revisions to previous estimates are made to improve month to month relationships. Estimates for the previous month are subject to revision in all States each month when current estimates are made. In February, all monthly estimates for the previous year, and the number of feedlots and annual marketings from two years ago are reviewed and subject to revisions. The reviews are primarily based on slaughter data, state check-off or brand data, and any other data that may have been received after the original estimate was made. Estimates will also be reviewed after data from the Census of Agriculture are available. No revisions will be made after that date and estimates become final.

Reliability: Since all 1,000+ capacity cattle on feed operators in every State are not included in the monthly survey, survey estimates are subject to sampling variability. Survey results are also subject to non-sampling errors such as omissions, duplications, and mistakes in reporting, recording, and processing the data. The effects of these errors cannot be measured directly. They are minimized through rigid quality controls in the data collection process and through a careful review of all reported data for consistency and reasonableness.

To assist users in evaluating the reliability of estimates in this report, the "**Root Mean Square Error**" is shown for selected items in the following table. The "Root Mean Square Error" is a statistical measure based on past performance and is computed using the differences between first and latest estimates. The "Root Mean Square Error" for cattle on feed inventory estimates over the past 10 years is .2 percent. This means that chances are 2 out of 3 that the final estimate will not be

above or below the current estimate of 11.0 million head by more than .2 percent. Chances are 9 out of 10 that the difference will not exceed .3 percent.

The following table also shows a 10 year record of the range of differences between first and latest estimates for selected items. Using estimates of number on feed as an example, changes between the first estimate and the latest estimate during the past 10 years have averaged 10,000 head, ranging from 0 to 36,000 head. During this period the initial estimate has been below the final estimate 5 times, and above the final estimate 0 times. This does not imply that the initial estimate is likely to understate or overstate final inventory.

Reliability of U.S. October 1 Cattle on Feed Estimates ¹

Item	Root Mean Square Error	90% Confidence Level		Difference Between First and Final Estimates ¹			Number of Years	
		Percent	(000) Head	Average	Smallest	Largest	First Above Final	First Below Final
	<i>Percent</i>	<i>Percent</i>	<i>1,000 Head</i>	<i>1,000 Head</i>	<i>1,000 Head</i>	<i>1,000 Head</i>	<i>Number</i>	<i>Number</i>
Number on Feed	0.2	0.3	33.3	10	0	36	0	5
Placements	0.2	0.3	7.7	2	0	11	0	4
Marketings	0.1	0.2	2.7	1	0	5	0	1

¹ Based on data for the past 10 years.

Information Contacts

Listed below are the commodity specialists in the Livestock Branch of the National Agricultural Statistics Service to contact for additional information.

Dan Kerestes, Chief, Livestock Branch (202) 720-3570

Livestock Section

Shawn Clark, Head, Livestock Section (202) 720-3570
 Bruce Boess - Hogs and Pigs (202) 720-3106
 Vacant - Dairy Products (202) 690-3236
 Jason Hardegree - Milk Production and Milk Cows (202) 720-3278
 Scott Hollis - Sheep & Lambs, Goats & Kids (202) 720-4751
 Mike Miller - Cattle, Cattle on Feed (202) 720-3040
 Benita Hodge - Livestock Slaughter (515) 284-4340
 Vacant - Dairy Products Prices (202) 690-2168

ACCESS TO REPORTS!!

For your convenience, there are several ways to obtain NASS reports, data products, and services:

INTERNET ACCESS

All NASS reports are available free of charge on the worldwide Internet. For access, connect to the Internet and go to the NASS Home Page at: www.nass.usda.gov.

E-MAIL SUBSCRIPTION

All NASS reports are available by subscription free of charge direct to your e-mail address. Starting with the NASS Home Page at www.nass.usda.gov, under the right navigation, *Receive reports by Email*, click on **National** or **State**. Follow the instructions on the screen.

PRINTED REPORTS OR DATA PRODUCTS

CALL OUR TOLL-FREE ORDER DESK: 800-999-6779 (U.S. and Canada)
Other areas, please call 703-605-6220 FAX: 703-605-6900
(Visa, MasterCard, check, or money order acceptable for payment.)

ASSISTANCE

For **assistance** with general agricultural statistics or further information about NASS or its products or services, contact the **Agricultural Statistics Hotline** at **800-727-9540**, 7:30 a.m. to 4:00 p.m. ET, or e-mail: nass@nass.usda.gov.

The U.S. Department of Agriculture (USDA) prohibits discrimination in all its programs and activities on the basis of race, color, national origin, age, disability, and where applicable, sex, marital status, familial status, parental status, religion, sexual orientation, genetic information, political beliefs, reprisal, or because all or a part of an individual's income is derived from any public assistance program. (Not all prohibited bases apply to all programs.) Persons with disabilities who require alternative means for communication of program information (Braille, large print, audiotape, etc.) should contact USDA's TARGET Center at (202) 720-2600 (voice and TDD).

To file a complaint of discrimination, write to USDA, Director, Office of Civil Rights, 1400 Independence Avenue, S.W., Washington, D.C. 20250-9410, or call (800) 795-3272 (voice) or (202) 720-6382 (TDD). USDA is an equal opportunity provider and employer.