



# Cattle On Feed

---

Released November 16, 2007, by the National Agricultural Statistics Service (NASS), Agricultural Statistics Board, U.S. Department of Agriculture. For information on *Cattle on Feed* call Mike Miller at (202) 720-3040, office hours 7:30 a.m. to 4:00 p.m. ET.

## U.S. Cattle on Feed Down 2 Percent

**Cattle and calves on feed** for slaughter market in the United States for feedlots with capacity of 1,000 or more head totaled 11.8 million head on November 1, 2007. The inventory was 2 percent below November 1, 2006 but 3 percent above November 1, 2005.

**Placements** in feedlots during October totaled 2.72 million, 12 percent above 2006 but 3 percent below 2005. Net placements were 2.67 million head. During October, placements of cattle and calves weighing less than 600 pounds were 855,000, 600-699 pounds were 745,000, 700-799 pounds were 556,000, and 800 pounds and greater were 560,000.

**Marketings** of fed cattle during October totaled 1.88 million, 6 percent above 2006 and 8 percent above 2005.

**Other disappearance** totaled 47,000 during October, 42 percent below 2006 and 19 percent below 2005.

**Cattle on Feed: Number on Feed, Placements, Marketings, and  
Other Disappearance, 1,000+ Capacity Feedlots,  
United States, November 1, 2005-2007**

Item	Number			2007 as % of	
	2005	2006	2007	2005	2006
	<i>1,000 Head</i>	<i>1,000 Head</i>	<i>1,000 Head</i>	<i>Percent</i>	<i>Percent</i>
On Feed Oct 1 <sup>1</sup>	10,482	11,385	10,967	105	96
Placed on Feed During Oct	2,788	2,430	2,716	97	112
Fed Cattle Marketed During Oct	1,739	1,765	1,876	108	106
Other Disappearance During Oct <sup>2</sup>	58	81	47	81	58
On Feed Nov 1 <sup>1</sup>	11,473	11,969	11,760	103	98

<sup>1</sup> Cattle and calves on feed are animals for slaughter market being fed a ration of grain or other concentrates and are expected to produce a carcass that will grade select or better.

<sup>2</sup> Includes death loss, movement from feedlots to pasture, and shipments to other feedlots for further feeding.

**Cattle on Feed: Number on Feed, Placements, Marketings, and  
Other Disappearance, 1,000+ Capacity Feedlots,  
United States, October 1, 2005-2007**

Item	Number			2007 as % of	
	2005	2006	2007	2005	2006
	<i>1,000 Head</i>	<i>1,000 Head</i>	<i>1,000 Head</i>	<i>Percent</i>	<i>Percent</i>
On Feed Sep 1 <sup>1</sup>	10,000	10,986	10,302	103	94
Placed on Feed During Sep	2,355	2,227	*2,420	103	109
Fed Cattle Marketed During Sep	1,816	1,760	*1,701	94	97
Other Disappearance During Sep <sup>2</sup>	57	68	54	95	79
On Feed Oct 1 <sup>1</sup>	10,482	11,385	10,967	105	96

\*Revised.

<sup>1</sup> Cattle and calves on feed are animals for slaughter market being fed a ration of grain or other concentrates and are expected to produce a carcass that will grade select or better.

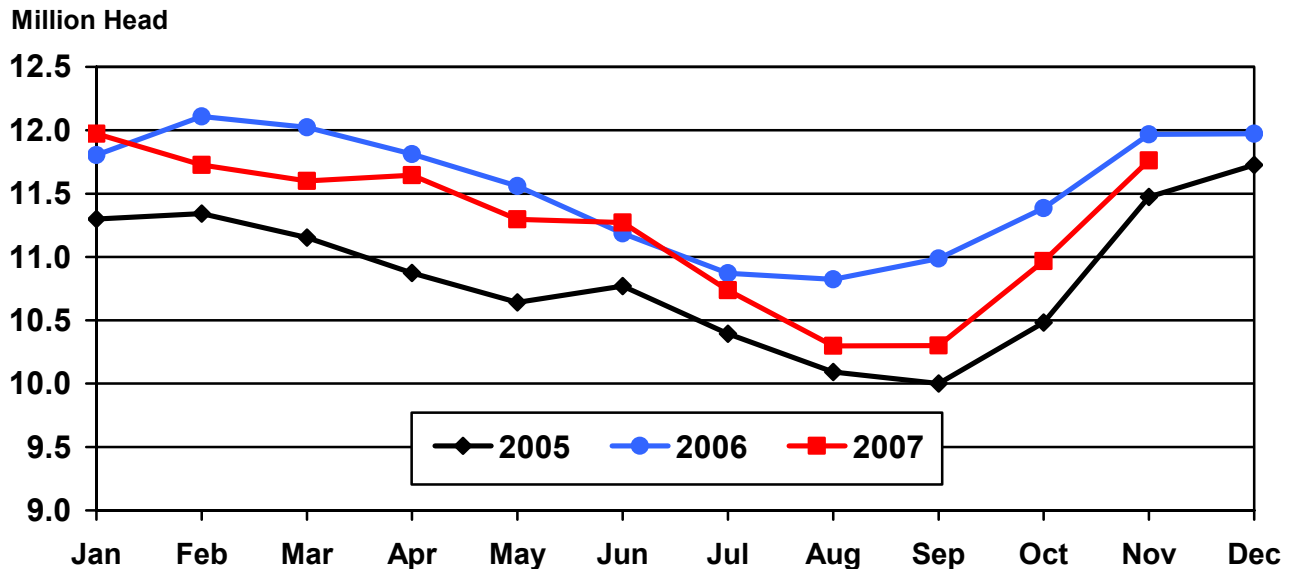
<sup>2</sup> Includes death loss, movement from feedlots to pasture, and shipments to other feedlots for further feeding.

**Cattle on Feed: Number on Feed, 1,000+ Capacity Feedlots,  
by Month, State, and United States 2006-2007 <sup>1</sup>**

State	Nov 1, 2006	Oct 1, 2007	Nov 1, 2007		
			Number	as % of 2006	as % of Oct
	<i>1,000 Head</i>	<i>1,000 Head</i>	<i>1,000 Head</i>	<i>Percent</i>	<i>Percent</i>
AZ	342	350	360	105	103
CA	530	540	545	103	101
CO	1,130	940	1,030	91	110
ID	285	210	235	82	112
IA	490	510	550	112	108
KS	2,550	2,310	2,420	95	105
NE	2,440	2,140	2,400	98	112
NM	141	133	134	95	101
OK	360	325	335	93	103
SD	190	180	205	108	114
TX	2,990	2,840	3,000	100	106
WA	181	154	166	92	108
Oth Sts	340	335	380	112	113
US	11,969	10,967	11,760	98	107

<sup>1</sup> Cattle and calves on feed are animals for slaughter market being fed a ration of grain or other concentrates and are expected to produce a carcass that will grade select or better.

### United States Cattle on Feed 1,000+ Capacity Feedlots



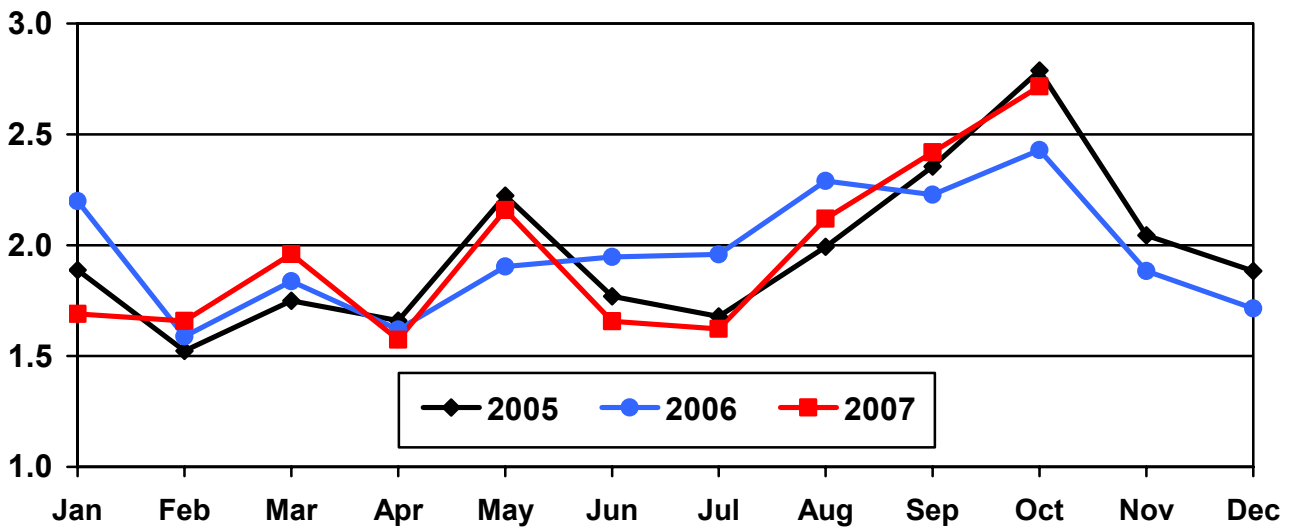
**Cattle on Feed: Number Placed on Feed, 1,000+ Capacity Feedlots,  
by Month, State, and United States 2006-2007**

State	During Oct 2006	During Sep 2007	During Oct 2007		
			Number	as % of 2006	as % of Sep
	<i>1,000 Head</i>	<i>1,000 Head</i>	<i>1,000 Head</i>	<i>Percent</i>	<i>Percent</i>
AZ	34	28	39	115	139
CA	71	60	67	94	112
CO	215	*260	260	121	100
ID	71	48	69	97	144
IA	109	100	120	110	120
KS	520	540	530	102	98
NE	560	540	620	111	115
NM	14	17	22	157	129
OK	65	72	74	114	103
SD	64	43	71	111	165
TX	590	590	700	119	119
WA	34	36	42	124	117
Oth Sts	83	86	102	123	119
US	2,430	*2,420	2,716	112	112

\*Revised.

**United States Cattle on Feed  
1,000+ Capacity Feedlots Number Placed**

Million Head



**Cattle on Feed: Number Placed on Feed by Weight Group, 1,000+ Capacity  
Feedlots, by Month, State, and United States, 2006-2007**

State	During October									
	Under 600		600-699		700-799		800 Plus		Total	
	2006	2007	2006	2007	2006	2007	2006	2007	2006	2007
	<i>1,000 Head</i>	<i>1,000 Head</i>	<i>1,000 Head</i>	<i>1,000 Head</i>	<i>1,000 Head</i>	<i>1,000 Head</i>	<i>1,000 Head</i>	<i>1,000 Head</i>	<i>1,000 Head</i>	<i>1,000 Head</i>
CO	55	65	55	65	45	55	60	75	215	260
KS	180	175	120	135	125	125	95	95	520	530
NE	175	175	175	175	95	110	115	160	560	620
TX	210	210	185	230	135	180	60	80	590	700
Oth Sts	220	230	115	140	85	86	125	150	545	606
US	840	855	650	745	485	556	455	560	2,430	2,716
	During September									
	Under 600		600-699		700-799		800 Plus		Total	
	2006	2007	2006	2007	2006	2007	2006	2007	2006	2007
	<i>1,000 Head</i>	<i>1,000 Head</i>	<i>1,000 Head</i>	<i>1,000 Head</i>	<i>1,000 Head</i>	<i>1,000 Head</i>	<i>1,000 Head</i>	<i>1,000 Head</i>	<i>1,000 Head</i>	<i>1,000 Head</i>
CO	45	35	35	40	50	*60	110	125	240	*260
KS	185	140	105	140	100	130	110	130	500	540
NE	105	100	70	80	120	120	205	240	500	540
TX	230	190	135	170	85	165	45	65	495	590
Oth Sts	155	145	67	75	95	90	175	180	492	490
US	720	610	412	505	450	*565	645	740	2,227	*2,420

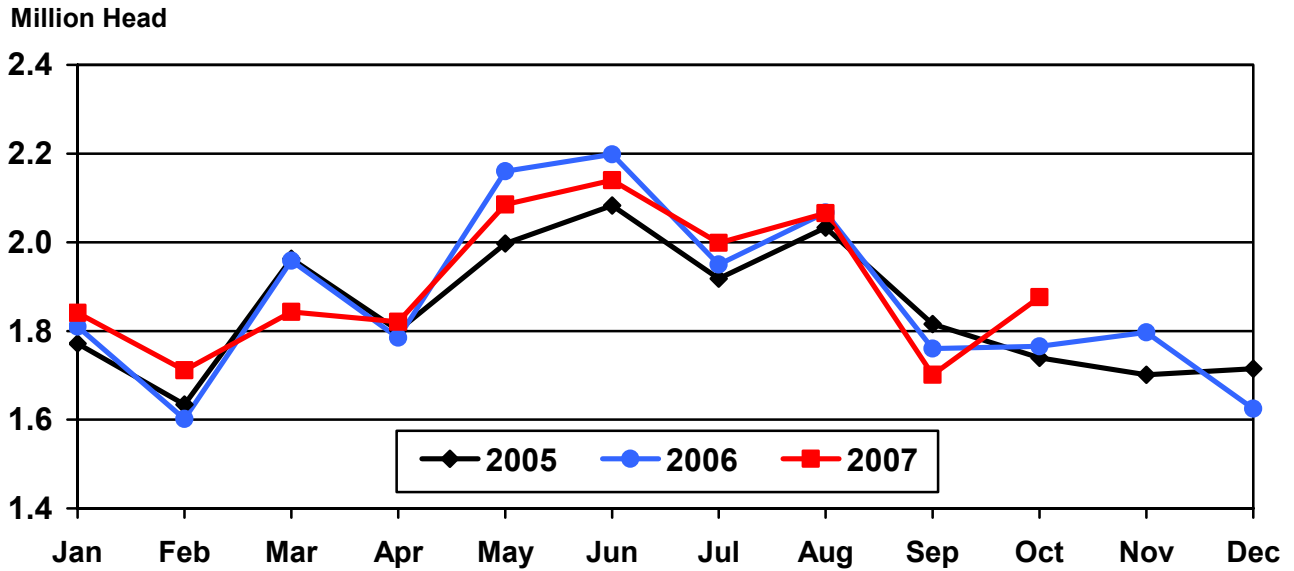
\* Revised.

**Cattle on Feed: Number Marketed, 1,000+ Capacity Feedlots,  
by Month, State, and United States 2006-2007**

State	During Oct 2006	During Sep 2007	During Oct 2007		
			Number	as % of 2006	as % of Sep
	<i>1,000 Head</i>	<i>1,000 Head</i>	<i>1,000 Head</i>	<i>Percent</i>	<i>Percent</i>
AZ	27	24	27	100	113
CA	62	47	60	97	128
CO	135	*165	165	122	100
ID	50	41	43	86	105
IA	78	79	79	101	100
KS	395	355	410	104	115
NE	330	320	350	106	109
NM	13	13	19	146	146
OK	58	56	63	109	113
SD	43	37	45	105	122
TX	510	480	530	104	110
WA	23	29	29	126	100
Oth Sts	41	55	56	137	102
US	1,765	*1,701	1,876	106	110

\* Revised.

## United States Cattle on Feed 1,000+ Capacity Feedlots Number Marketed



**Cattle on Feed: Other Disappearance, 1,000+ Capacity Feedlots,  
by Month, State, and United States 2006-2007<sup>1</sup>**

State	During Oct 2006	During Sep 2007	During Oct 2007		
			Number	as % of 2006	as % of Sep
	<i>1,000 Head</i>	<i>1,000 Head</i>	<i>1,000 Head</i>	<i>Percent</i>	<i>Percent</i>
AZ	1	2	2	200	100
CA	4	3	2	50	67
CO	10	5	5	50	100
ID	1	2	1	100	50
IA	1	1	1	100	100
KS	25	15	10	40	67
NE	10	10	10	100	100
NM	3	2	2	67	100
OK	2	1	1	50	100
SD	1	1	1	100	100
TX	20	10	10	50	100
WA	1	1	1	100	100
Oth Sts	2	1	1	50	100
US	81	54	47	58	87

<sup>1</sup> Includes death loss, movement from feedlots to pasture, and shipments to other feedlots for further feeding.

## Terms and Definitions of Cattle on Feed Estimates

**Cattle on feed** are animals being fed a ration of grain, silage, hay and/or protein supplement for slaughter market that are expected to produce a carcass that will grade select or better. It excludes cattle being "backgrounded only" for later sale as feeders or later placement in another feedlot.

**Placements** are cattle put into a feedlot, fed a ration which will produce a carcass that will grade select or better, and are intended for the slaughter market.

**Marketings** are cattle shipped out of feedlots to a slaughter market.

**Other disappearance** includes death loss, movement from feedlots to pasture, and shipments to other feedlots for further feeding.

## Reliability of Cattle on Feed Estimates

**Survey Procedures:** During January and July all known feedlots in the U.S. with capacity of 1,000 or more head are surveyed to provide data for cattle on feed estimates. During the other months, all known feedlots from 17 States are surveyed. The 17 States account for 98 percent of the cattle on feed in feedlots with capacity of 1,000 or more head.

**Estimating Procedures:** These cattle on feed estimates were prepared by the Agricultural Statistics Board after reviewing recommendations and analysis submitted by each State office. Regional and State survey data were reviewed for reasonableness with each other and with estimates from the previous month when setting the current estimates.

**Revision Policy:** Revisions to previous estimates are made to improve month to month relationships. Estimates for the previous month are subject to revision in all States each month when current estimates are made. In February, all monthly estimates for the previous year, and the number of feedlots and annual marketings from two years ago are reviewed and subject to revisions. The reviews are primarily based on slaughter data, state check-off or brand data, and any other data that may have been received after the original estimate was made. Estimates will also be reviewed after data from the Census of Agriculture are available. No revisions will be made after that date and estimates become final.

**Reliability:** Since all 1,000+ capacity cattle on feed operators in every State are not included in the monthly survey, survey estimates are subject to sampling variability. Survey results are also subject to non-sampling errors such as omissions, duplications, and mistakes in reporting, recording, and processing the data. The effects of these errors cannot be measured directly. They are minimized through rigid quality controls in the data collection process and through a careful review of all reported data for consistency and reasonableness.

To assist users in evaluating the reliability of estimates in this report, the "**Root Mean Square Error**" is shown for selected items in the following table. The "Root Mean Square Error" is a statistical measure based on past performance and is computed using the differences between first and latest estimates. The "Root Mean Square Error" for cattle on feed inventory estimates over the past 10 years is .2 percent. This means that chances are 2 out of 3 that the final estimate will not be

above or below the current estimate of 11.8 million head by more than .2 percent. Chances are 9 out of 10 that the difference will not exceed .3 percent.

The following table also shows a 10 year record of the range of differences between first and latest estimates for selected items. Using estimates of number on feed as an example, changes between the first estimate and the latest estimate during the past 10 years have averaged 11,000 head, ranging from 0 to 44,000 head. During this period the initial estimate has been below the final estimate 5 times, and above the final estimate 1 time. This does not imply that the initial estimate is likely to understate or overstate final inventory.

**Reliability of U.S. November 1 Cattle on Feed Estimates <sup>1</sup>**

Item	Root Mean Square Error	90% Confidence Level		Difference Between First and Final Estimates <sup>1</sup>			Number of Years	
		Percent	(000) Head	Average	Smallest	Largest	First Above Final	First Below Final
	<i>Percent</i>	<i>Percent</i>	<i>1,000 Head</i>	<i>1,000 Head</i>	<i>1,000 Head</i>	<i>1,000 Head</i>	<i>Number</i>	<i>Number</i>
Number on Feed	0.2	0.3	36.0	11	0	44	1	5
Placements	0.4	0.6	17.5	7	0	20	1	6
Marketings	0.5	0.9	16.0	6	0	20	2	5

<sup>1</sup> Based on data for the past 10 years.

### Information Contacts

Listed below are the commodity specialists in the Livestock Branch of the National Agricultural Statistics Service to contact for additional information.

Dan Kerestes, Chief, Livestock Branch ..... (202) 720-3570

#### Livestock Section

Shawn Clark, Head, Livestock Section ..... (202) 720-3570  
 Bruce Boess - Hogs and Pigs ..... (202) 720-3106  
 Vacant - Dairy Products ..... (202) 690-3236  
 Jason Hardegree - Milk Production and Milk Cows ..... (202) 720-3278  
 Scott Hollis - Sheep & Lambs, Goats & Kids ..... (202) 720-4751  
 Mike Miller - Cattle, Cattle on Feed ..... (202) 720-3040  
 Benita Hodge - Livestock Slaughter ..... (515) 284-4340  
 Vacant - Dairy Products Prices ..... (202) 690-2168



## ACCESS TO REPORTS!!

---

For your convenience, there are several ways to obtain NASS reports, data products, and services:

### INTERNET ACCESS

All NASS reports are available free of charge on the worldwide Internet. For access, connect to the Internet and go to the NASS Home Page at: **www.nass.usda.gov**.

### E-MAIL SUBSCRIPTION

All NASS reports are available by subscription free of charge direct to your e-mail address. Starting with the NASS Home Page at **www.nass.usda.gov**, under the right navigation, *Receive reports by Email*, click on **National** or **State**. Follow the instructions on the screen.

-----

### PRINTED REPORTS OR DATA PRODUCTS

**CALL OUR TOLL-FREE ORDER DESK: 800-999-6779 (U.S. and Canada)**  
**Other areas, please call 703-605-6220      FAX: 703-605-6900**  
**(Visa, MasterCard, check, or money order acceptable for payment.)**

-----

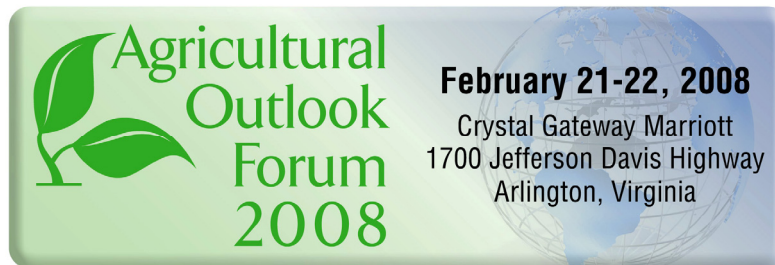
### ASSISTANCE

For **assistance** with general agricultural statistics or further information about NASS or its products or services, contact the **Agricultural Statistics Hotline** at **800-727-9540**, 7:30 a.m. to 4:00 p.m. ET, or e-mail: **nass@nass.usda.gov**.

The U.S. Department of Agriculture (USDA) prohibits discrimination in all its programs and activities on the basis of race, color, national origin, age, disability, and where applicable, sex, marital status, familial status, parental status, religion, sexual orientation, genetic information, political beliefs, reprisal, or because all or a part of an individual's income is derived from any public assistance program. (Not all prohibited bases apply to all programs.) Persons with disabilities who require alternative means for communication of program information (Braille, large print, audiotape, etc.) should contact USDA's TARGET Center at (202) 720-2600 (voice and TDD).

To file a complaint of discrimination, write to USDA, Director, Office of Civil Rights, 1400 Independence Avenue, S.W., Washington, D.C. 20250-9410, or call (800) 795-3272 (voice) or (202) 720-6382 (TDD). USDA is an equal opportunity provider and employer.

# Energizing Rural America in the Global Marketplace



Please join us for USDA's 84<sup>th</sup> annual Forum as the Secretary of Agriculture and government, farm, and industry leaders discuss the future of American agriculture.

- ❖ More than 100 experts are scheduled to speak.
- ❖ Topical sessions include luncheon and dinner speakers.
- ❖ Extensive networking opportunities.

Forecasts • Trends • Policies

**Register at: [www.usda.gov/oce/forum](http://www.usda.gov/oce/forum) for \$300**