



Cattle On Feed

Released December 21, 2007, by the National Agricultural Statistics Service (NASS), Agricultural Statistics Board, U.S. Department of Agriculture. For information on *Cattle on Feed* call Mike Miller at (202) 720-3040, office hours 7:30 a.m. to 4:00 p.m. ET.

U.S. Cattle on Feed Up 1 Percent

Cattle and calves on feed for slaughter market in the United States for feedlots with capacity of 1,000 or more head totaled 12.1 million head on December 1, 2007. The inventory was 1 percent above December 1, 2006 and 3 percent above December 1, 2005. This is the highest December 1 inventory since the series began in 1996.

Placements in feedlots during November totaled 2.12 million, 12 percent above 2006 and 3 percent above 2005. Net placements were 2.06 million head. During November, placements of cattle and calves weighing less than 600 pounds were 685,000, 600-699 pounds were 650,000, 700-799 pounds were 420,000, and 800 pounds and greater were 361,000.

Marketings of fed cattle during November totaled 1.74 million, 3 percent below 2006 but 2 percent above 2005.

Other disappearance totaled 57,000 during November, 31 percent below 2006 and 37 percent below 2005.

**Cattle on Feed: Number on Feed, Placements, Marketings, and
Other Disappearance, 1,000+ Capacity Feedlots,
United States, December 1, 2005-2007**

Item	Number			2007 as % of	
	2005	2006	2007	2005	2006
	<i>1,000 Head</i>	<i>1,000 Head</i>	<i>1,000 Head</i>	<i>Percent</i>	<i>Percent</i>
On Feed Nov 1 ¹	11,473	11,969	11,760	103	98
Placed on Feed During Nov	2,045	1,884	2,116	103	112
Fed Cattle Marketed During Nov	1,701	1,797	1,738	102	97
Other Disappearance During Nov ²	91	83	57	63	69
On Feed Dec 1 ¹	11,726	11,973	12,081	103	101

¹ Cattle and calves on feed are animals for slaughter market being fed a ration of grain or other concentrates and are expected to produce a carcass that will grade select or better.

² Includes death loss, movement from feedlots to pasture, and shipments to other feedlots for further feeding.

**Cattle on Feed: Number on Feed, Placements, Marketings, and
Other Disappearance, 1,000+ Capacity Feedlots,
United States, November 1, 2005-2007**

Item	Number			2007 as % of	
	2005	2006	2007	2005	2006
	<i>1,000 Head</i>	<i>1,000 Head</i>	<i>1,000 Head</i>	<i>Percent</i>	<i>Percent</i>
On Feed Oct 1 ¹	10,482	11,385	10,967	105	96
Placed on Feed During Oct	2,788	2,430	2,716	97	112
Fed Cattle Marketed During Oct	1,739	1,765	1,876	108	106
Other Disappearance During Oct ²	58	81	47	81	58
On Feed Nov 1 ¹	11,473	11,969	11,760	103	98

¹ Cattle and calves on feed are animals for slaughter market being fed a ration of grain or other concentrates and are expected to produce a carcass that will grade select or better.

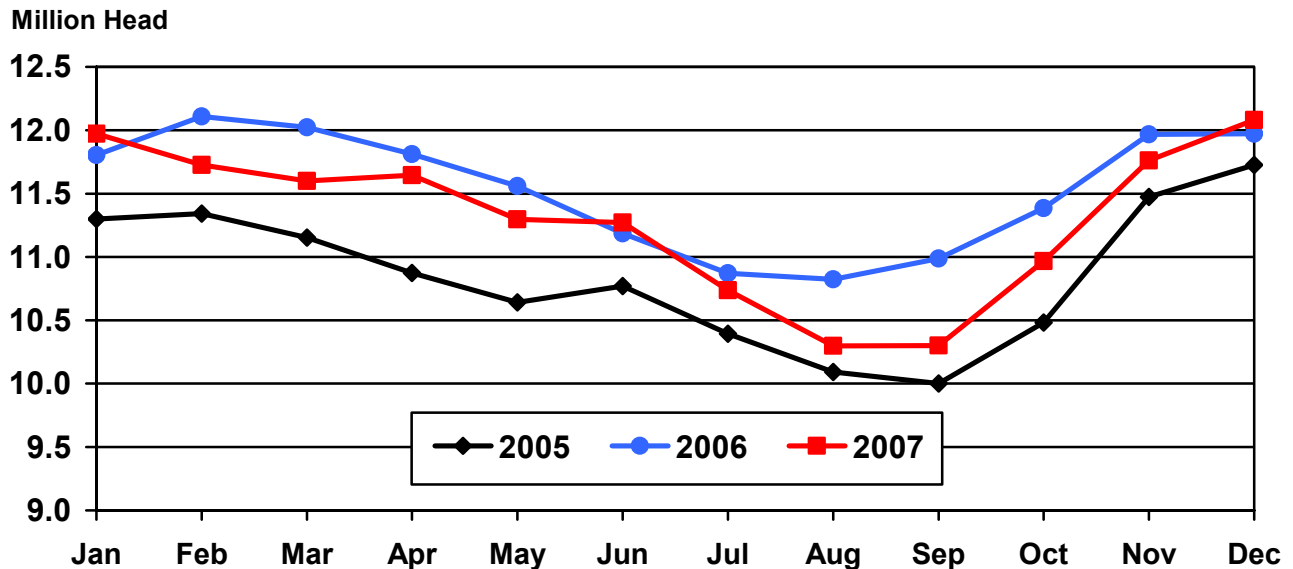
² Includes death loss, movement from feedlots to pasture, and shipments to other feedlots for further feeding.

**Cattle on Feed: Number on Feed, 1,000+ Capacity Feedlots,
by Month, State, and United States 2006-2007 ¹**

State	Dec 1, 2006	Nov 1, 2007	Dec 1, 2007		
			Number	as % of 2006	as % of Nov
	<i>1,000 Head</i>	<i>1,000 Head</i>	<i>1,000 Head</i>	<i>Percent</i>	<i>Percent</i>
AZ	341	360	367	108	102
CA	540	545	555	103	102
CO	1,120	1,030	1,070	96	104
ID	270	235	240	89	102
IA	500	550	570	114	104
KS	2,550	2,420	2,500	98	103
NE	2,510	2,400	2,520	100	105
NM	137	134	131	96	98
OK	350	335	345	99	103
SD	210	205	215	102	105
TX	2,900	3,000	3,010	104	100
WA	185	166	168	91	101
Oth Sts	360	380	390	108	103
US	11,973	11,760	12,081	101	103

¹ Cattle and calves on feed are animals for slaughter market being fed a ration of grain or other concentrates and are expected to produce a carcass that will grade select or better.

United States Cattle on Feed 1,000+ Capacity Feedlots

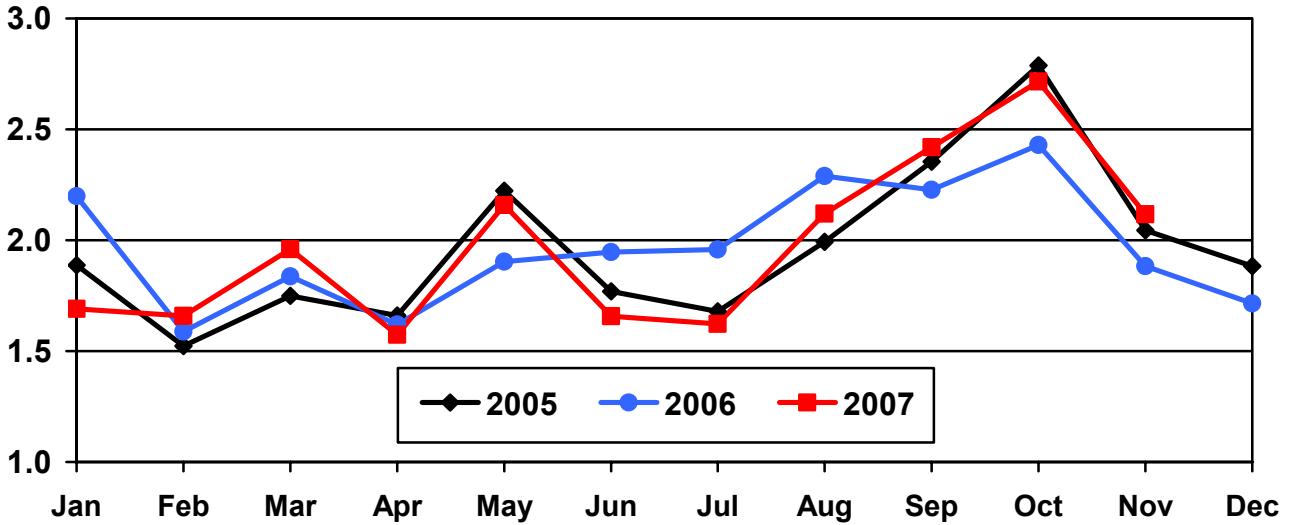


**Cattle on Feed: Number Placed on Feed, 1,000+ Capacity Feedlots,
by Month, State, and United States 2006-2007**

State	During Nov 2006	During Oct 2007	During Nov 2007		
			Number	as % of 2006	as % of Oct
	<i>1,000 Head</i>	<i>1,000 Head</i>	<i>1,000 Head</i>	<i>Percent</i>	<i>Percent</i>
AZ	30	39	37	123	95
CA	69	67	73	106	109
CO	145	260	190	131	73
ID	43	69	48	112	70
IA	82	120	96	117	80
KS	405	530	450	111	85
NE	460	620	485	105	78
NM	14	22	22	157	100
OK	50	74	62	124	84
SD	56	71	50	89	70
TX	435	700	510	117	73
WA	31	42	31	100	74
Oth Sts	64	102	62	97	61
US	1,884	2,716	2,116	112	78

**United States Cattle on Feed
1,000+ Capacity Feedlots Number Placed**

Million Head



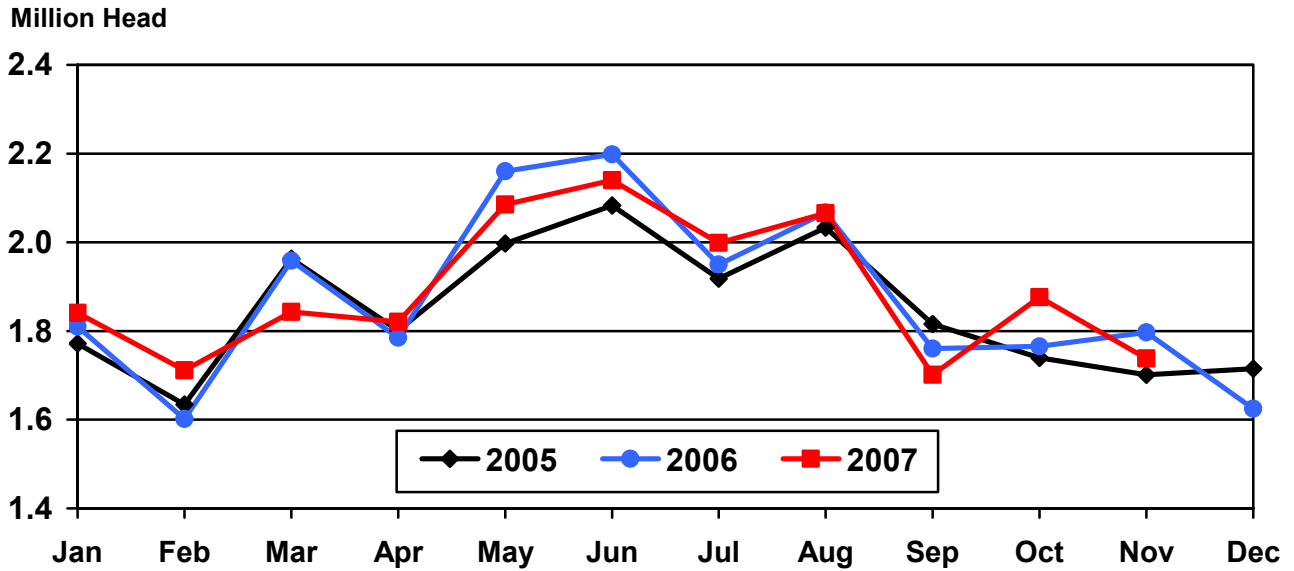
**Cattle on Feed: Number Placed on Feed by Weight Group, 1,000+ Capacity
Feedlots, by Month, State, and United States, 2006-2007**

State	During November									
	Under 600		600-699		700-799		800 Plus		Total	
	2006	2007	2006	2007	2006	2007	2006	2007	2006	2007
	<i>1,000 Head</i>	<i>1,000 Head</i>	<i>1,000 Head</i>	<i>1,000 Head</i>	<i>1,000 Head</i>	<i>1,000 Head</i>	<i>1,000 Head</i>	<i>1,000 Head</i>	<i>1,000 Head</i>	<i>1,000 Head</i>
CO	45	55	40	60	30	35	30	40	145	190
KS	110	140	115	135	105	100	75	75	405	450
NE	100	120	165	170	95	100	100	95	460	485
TX	145	180	130	165	100	110	60	55	435	510
Oth Sts	155	190	110	120	74	75	100	96	439	481
US	555	685	560	650	404	420	365	361	1,884	2,116
State	During October									
	Under 600		600-699		700-799		800 Plus		Total	
	2006	2007	2006	2007	2006	2007	2006	2007	2006	2007
	<i>1,000 Head</i>	<i>1,000 Head</i>	<i>1,000 Head</i>	<i>1,000 Head</i>	<i>1,000 Head</i>	<i>1,000 Head</i>	<i>1,000 Head</i>	<i>1,000 Head</i>	<i>1,000 Head</i>	<i>1,000 Head</i>
CO	55	65	55	65	45	55	60	75	215	260
KS	180	175	120	135	125	125	95	95	520	530
NE	175	175	175	175	95	110	115	160	560	620
TX	210	210	185	230	135	180	60	80	590	700
Oth Sts	220	230	115	140	85	86	125	150	545	606
US	840	855	650	745	485	556	455	560	2,430	2,716

**Cattle on Feed: Number Marketed, 1,000+ Capacity Feedlots,
by Month, State, and United States 2006-2007**

State	During Nov 2006	During Oct 2007	During Nov 2007		
			Number	as % of 2006	as % of Oct
	<i>1,000 Head</i>	<i>1,000 Head</i>	<i>1,000 Head</i>	<i>Percent</i>	<i>Percent</i>
AZ	29	27	27	93	100
CA	55	60	61	111	102
CO	145	165	145	100	88
ID	56	43	42	75	98
IA	70	79	75	107	95
KS	385	410	355	92	87
NE	380	350	355	93	101
NM	16	19	23	144	121
OK	57	63	50	88	79
SD	35	45	38	109	84
TX	500	530	490	98	92
WA	26	29	27	104	93
Oth Sts	43	56	50	116	89
US	1,797	1,876	1,738	97	93

United States Cattle on Feed 1,000+ Capacity Feedlots Number Marketed



**Cattle on Feed: Other Disappearance, 1,000+ Capacity Feedlots,
by Month, State, and United States 2006-2007¹**

State	During Nov 2006	During Oct 2007	During Nov 2007		
			Number	as % of 2006	as % of Oct
	<i>1,000 Head</i>	<i>1,000 Head</i>	<i>1,000 Head</i>	<i>Percent</i>	<i>Percent</i>
AZ	2	2	3	150	150
CA	4	2	2	50	100
CO	10	5	5	50	100
ID	2	1	1	50	100
IA	2	1	1	50	100
KS	20	10	15	75	150
NE	10	10	10	100	100
NM	2	2	2	100	100
OK	3	1	2	67	200
SD	1	1	2	200	200
TX	25	10	10	40	100
WA	1	1	2	200	200
Oth Sts	1	1	2	200	200
US	83	47	57	69	121

¹ Includes death loss, movement from feedlots to pasture, and shipments to other feedlots for further feeding.

Terms and Definitions of Cattle on Feed Estimates

Cattle on feed are animals being fed a ration of grain, silage, hay and/or protein supplement for slaughter market that are expected to produce a carcass that will grade select or better. It excludes cattle being "backgrounded only" for later sale as feeders or later placement in another feedlot.

Placements are cattle put into a feedlot, fed a ration which will produce a carcass that will grade select or better, and are intended for the slaughter market.

Marketings are cattle shipped out of feedlots to a slaughter market.

Other disappearance includes death loss, movement from feedlots to pasture, and shipments to other feedlots for further feeding.

Reliability of Cattle on Feed Estimates

Survey Procedures: During January and July all known feedlots in the U.S. with capacity of 1,000 or more head are surveyed to provide data for cattle on feed estimates. During the other months, all known feedlots from 17 States are surveyed. The 17 States account for 98 percent of the cattle on feed in feedlots with capacity of 1,000 or more head.

Estimating Procedures: These cattle on feed estimates were prepared by the Agricultural Statistics Board after reviewing recommendations and analysis submitted by each State office. Regional and State survey data were reviewed for reasonableness with each other and with estimates from the previous month when setting the current estimates.

Revision Policy: Revisions to previous estimates are made to improve month to month relationships. Estimates for the previous month are subject to revision in all States each month when current estimates are made. In February, all monthly estimates for the previous year, and the number of feedlots and annual marketings from two years ago are reviewed and subject to revisions. The reviews are primarily based on slaughter data, state check-off or brand data, and any other data that may have been received after the original estimate was made. Estimates will also be reviewed after data from the Census of Agriculture are available. No revisions will be made after that date and estimates become final.

Reliability: Since all 1,000+ capacity cattle on feed operators in every State are not included in the monthly survey, survey estimates are subject to sampling variability. Survey results are also subject to non-sampling errors such as omissions, duplications, and mistakes in reporting, recording, and processing the data. The effects of these errors cannot be measured directly. They are minimized through rigid quality controls in the data collection process and through a careful review of all reported data for consistency and reasonableness.

To assist users in evaluating the reliability of estimates in this report, the "**Root Mean Square Error**" is shown for selected items in the following table. The "Root Mean Square Error" is a statistical measure based on past performance and is computed using the differences between first and latest estimates. The "Root Mean Square Error" for cattle on feed inventory estimates over the past 10 years is .2 percent. This means that chances are 2 out of 3 that the final estimate will not be

above or below the current estimate of 12.1 million head by more than .2 percent. Chances are 9 out of 10 that the difference will not exceed .3 percent.

The following table also shows a 10 year record of the range of differences between first and latest estimates for selected items. Using estimates of number on feed as an example, changes between the first estimate and the latest estimate during the past 10 years have averaged 11,000 head, ranging from 0 to 48,000 head. During this period the initial estimate has been below the final estimate 4 times, and above the final estimate 1 time. This does not imply that the initial estimate is likely to understate or overstate final inventory.

Reliability of U.S. December 1 Cattle on Feed Estimates ¹

Item	Root Mean Square Error	90% Confidence Level		Difference Between First and Final Estimates ¹			Number of Years	
		Percent	(000) Head	Average	Smallest	Largest	First Above Final	First Below Final
	<i>Percent</i>	<i>Percent</i>	<i>1,000 Head</i>	<i>1,000 Head</i>	<i>1,000 Head</i>	<i>1,000 Head</i>	<i>Number</i>	<i>Number</i>
Number on Feed	0.2	0.3	39.5	11	0	48	1	4
Placements	0.2	0.4	9.5	2	0	14	1	2
Marketings	0.3	0.5	8.7	3	0	10	1	3

¹ Based on data for the past 10 years.

Information Contacts

Listed below are the commodity specialists in the Livestock Branch of the National Agricultural Statistics Service to contact for additional information.

Dan Kerestes, Chief, Livestock Branch (202) 720-3570

Livestock Section

Shawn Clark, Head, Livestock Section (202) 720-3570
 Bruce Boess - Hogs and Pigs (202) 720-3106
 Vacant - Dairy Products (202) 690-3236
 Jason Hardegree - Milk Production and Milk Cows (202) 720-3278
 Scott Hollis - Sheep & Lambs, Goats & Kids (202) 720-4751
 Mike Miller - Cattle, Cattle on Feed (202) 720-3040
 Benita Hodge - Livestock Slaughter (515) 284-4340
 Joe Gaynor - Dairy Products Prices (202) 690-2168

ACCESS TO REPORTS!!

For your convenience, there are several ways to obtain NASS reports, data products, and services:

INTERNET ACCESS

All NASS reports are available free of charge on the worldwide Internet. For access, connect to the Internet and go to the NASS Home Page at: www.nass.usda.gov.

E-MAIL SUBSCRIPTION

All NASS reports are available by subscription free of charge direct to your e-mail address. Starting with the NASS Home Page at www.nass.usda.gov, under the right navigation, *Receive reports by Email*, click on **National** or **State**. Follow the instructions on the screen.

PRINTED REPORTS OR DATA PRODUCTS

CALL OUR TOLL-FREE ORDER DESK: 800-999-6779 (U.S. and Canada)
Other areas, please call 703-605-6220 FAX: 703-605-6900
(Visa, MasterCard, check, or money order acceptable for payment.)

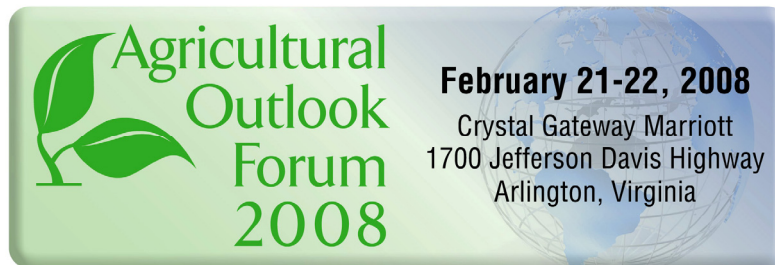
ASSISTANCE

For **assistance** with general agricultural statistics or further information about NASS or its products or services, contact the **Agricultural Statistics Hotline** at **800-727-9540**, 7:30 a.m. to 4:00 p.m. ET, or e-mail: nass@nass.usda.gov.

The U.S. Department of Agriculture (USDA) prohibits discrimination in all its programs and activities on the basis of race, color, national origin, age, disability, and where applicable, sex, marital status, familial status, parental status, religion, sexual orientation, genetic information, political beliefs, reprisal, or because all or a part of an individual's income is derived from any public assistance program. (Not all prohibited bases apply to all programs.) Persons with disabilities who require alternative means for communication of program information (Braille, large print, audiotape, etc.) should contact USDA's TARGET Center at (202) 720-2600 (voice and TDD).

To file a complaint of discrimination, write to USDA, Director, Office of Civil Rights, 1400 Independence Avenue, S.W., Washington, D.C. 20250-9410, or call (800) 795-3272 (voice) or (202) 720-6382 (TDD). USDA is an equal opportunity provider and employer.

Energizing Rural America in the Global Marketplace



Please join us for USDA's 84th annual Forum as the Secretary of Agriculture and government, farm, and industry leaders discuss the future of American agriculture.

- ❖ More than 100 experts are scheduled to speak.
- ❖ Topical sessions include luncheon and dinner speakers.
- ❖ Extensive networking opportunities.

Forecasts • Trends • Policies

Register at: www.usda.gov/oce/forum for \$300