

Cattle On Feed

Released January 25, 2008, by the National Agricultural Statistics Service (NASS), Agricultural Statistics Board, U.S. Department of Agriculture. For information on *Cattle on Feed* call Mike Miller at (202) 720-3040, office hours 7:30 a.m. to 4:00 p.m. ET.

U.S. Cattle on Feed Up 1 Percent

Cattle and calves on feed for slaughter market in the United States for feedlots with capacity of 1,000 or more head totaled 12.1 million head on January 1, 2008. The inventory was 1 percent above January 1, 2007 and 2 percent above January 1, 2006. This is the highest January 1 inventory since the series began in 1996. The inventory included 7.65 million steers and steer calves, up 1 percent from the previous year. This group accounted for 63 percent of the total inventory. Heifers and heifer calves accounted for 4.38 million head, up 2 percent from 2007.

Placements in feedlots during December totaled 1.70 million, 1 percent below 2007 and 10 percent below 2006. Net placements were 1.64 million head. During December, placements of cattle and calves weighing less than 600 pounds were 480,000, 600-699 pounds were 505,000, 700-799 pounds were 420,000 and 800 pounds and greater were 296,000.

Marketings of fed cattle during December totaled 1.65 million, 1 percent above 2007 but 4 percent below 2006. This is the second lowest fed cattle marketings for the month of December since the series began in 1996.

Other disappearance totaled 58,000 during December, 34 percent below 2007 and 36 percent below 2006.

Special Note

November placements in New Mexico (NM) include 9,000 head which should have been reported in October. Since October placements are not open for revision at this time, placements were included in November to negate an imbalance. Based on current New Mexico data, November inventory should be 143,000 head. During October and November, placements should be 31,000 head for each month. Marketings are not affected by these revisions. U.S. level placements and inventory should be adjusted by these same amounts bringing October and November placements to 2,725,000 head and 2,125,000 head, respectively. U.S. inventory for November should be 11,769,000 head. These adjustments along with any other revisions will be made during the normal annual revision process and published in the February Cattle on Feed report.

**Cattle on Feed: Number on Feed, Placements, Marketings, and
Other Disappearance, 1,000+ Capacity Feedlots,
United States, January 1, 2006-2008**

| Item | Number | | | 2008 as % of | |
|---|-------------------|-------------------|-------------------|----------------|----------------|
| | 2006 | 2007 | 2008 | 2006 | 2007 |
| | <i>1,000 Head</i> | <i>1,000 Head</i> | <i>1,000 Head</i> | <i>Percent</i> | <i>Percent</i> |
| On Feed Dec 1 ^{1 2} | 11,726 | 11,973 | *12,099 | 103 | 101 |
| Placed on Feed During Dec ² | 1,884 | 1,714 | 1,701 | 90 | 99 |
| Fed Cattle Marketed During Dec ² | 1,715 | 1,625 | 1,645 | 96 | 101 |
| Other Disappearance During Dec ^{2 3} | 91 | 88 | 58 | 64 | 66 |
| On Feed Jan 1 ¹ | 11,804 | 11,974 | 12,097 | 102 | 101 |

* Revised.

¹ Cattle and calves on feed are animals for slaughter market being fed a ration of grain or other concentrates and are expected to produce a carcass that will grade select or better.

² December preceding year.

³ Includes death loss, movement from feedlots to pasture, and shipments to other feedlots for further feeding.

**Cattle on Feed: Number on Feed, Placements, Marketings, and
Other Disappearance, 1,000+ Capacity Feedlots,
United States, December 1, 2005-2007**

| Item | Number | | | 2007 as % of | |
|---|-------------------|-------------------|-------------------|----------------|----------------|
| | 2005 | 2006 | 2007 | 2005 | 2006 |
| | <i>1,000 Head</i> | <i>1,000 Head</i> | <i>1,000 Head</i> | <i>Percent</i> | <i>Percent</i> |
| On Feed Nov 1 ¹ | 11,473 | 11,969 | 11,760 | 103 | 98 |
| Placed on Feed During Nov | 2,045 | 1,884 | *2,134 | 104 | 113 |
| Fed Cattle Marketed During Nov | 1,701 | 1,797 | 1,738 | 102 | 97 |
| Other Disappearance During Nov ² | 91 | 83 | 57 | 63 | 69 |
| On Feed Dec 1 ¹ | 11,726 | 11,973 | *12,099 | 103 | 101 |

* Revised.

¹ Cattle and calves on feed are animals for slaughter market being fed a ration of grain or other concentrates and are expected to produce a carcass that will grade select or better.

² Includes death loss, movement from feedlots to pasture, and shipments to other feedlots for further feeding.

**Cattle on Feed: Number on Feed by Class, 1,000+ Capacity Feedlots,
United States, January 1, 2006-2008**

| Item | Number | | | 2008 as % of | |
|---------------------------|-------------------|-------------------|-------------------|----------------|----------------|
| | 2006 | 2007 | 2008 | 2006 | 2007 |
| | <i>1,000 Head</i> | <i>1,000 Head</i> | <i>1,000 Head</i> | <i>Percent</i> | <i>Percent</i> |
| Class on Feed Jan 1 | | | | | |
| Steers and Steer Calves | 7,570 | 7,574 | 7,646 | 101 | 101 |
| Heifers and Heifer Calves | 4,147 | 4,303 | 4,381 | 106 | 102 |
| Cows and Bulls | 87 | 97 | 70 | 80 | 72 |

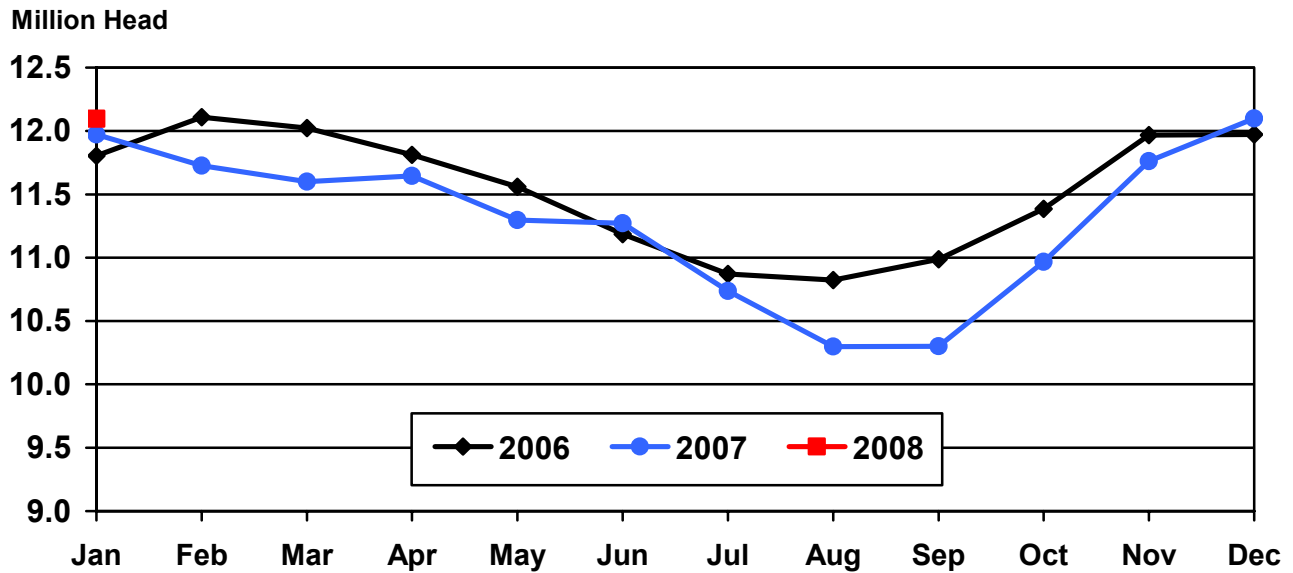
**Cattle on Feed: Number on Feed, 1,000+ Capacity Feedlots,
by Month, State, and United States 2007-2008¹**

| State | Jan 1, 2007 | Dec 1, 2007 | Jan 1, 2008 | | |
|---------|-------------------|-------------------|-------------------|----------------|----------------|
| | | | Number | as % of 2007 | as % of Dec |
| | <i>1,000 Head</i> | <i>1,000 Head</i> | <i>1,000 Head</i> | <i>Percent</i> | <i>Percent</i> |
| AZ | 334 | 367 | 368 | 110 | 100 |
| CA | 550 | 555 | 560 | 102 | 101 |
| CO | 1,100 | 1,070 | 1,100 | 100 | 103 |
| ID | 260 | 240 | 235 | 90 | 98 |
| IA | 520 | 570 | 570 | 110 | 100 |
| KS | 2,540 | 2,500 | 2,480 | 98 | 99 |
| NE | 2,540 | 2,520 | 2,530 | 100 | 100 |
| NM | 136 | *149 | 160 | 118 | 107 |
| OK | 350 | 345 | 350 | 100 | 101 |
| SD | 225 | 215 | 230 | 102 | 107 |
| TX | 2,870 | 3,010 | 2,960 | 103 | 98 |
| WA | 184 | 168 | 164 | 89 | 98 |
| Oth Sts | 365 | 390 | 390 | 107 | 100 |
| US | 11,974 | *12,099 | 12,097 | 101 | 100 |

* Revised.

¹ Cattle and calves on feed are animals for slaughter market being fed a ration of grain or other concentrates and are expected to produce a carcass that will grade select or better.

**United States Cattle on Feed
1,000+ Capacity Feedlots**



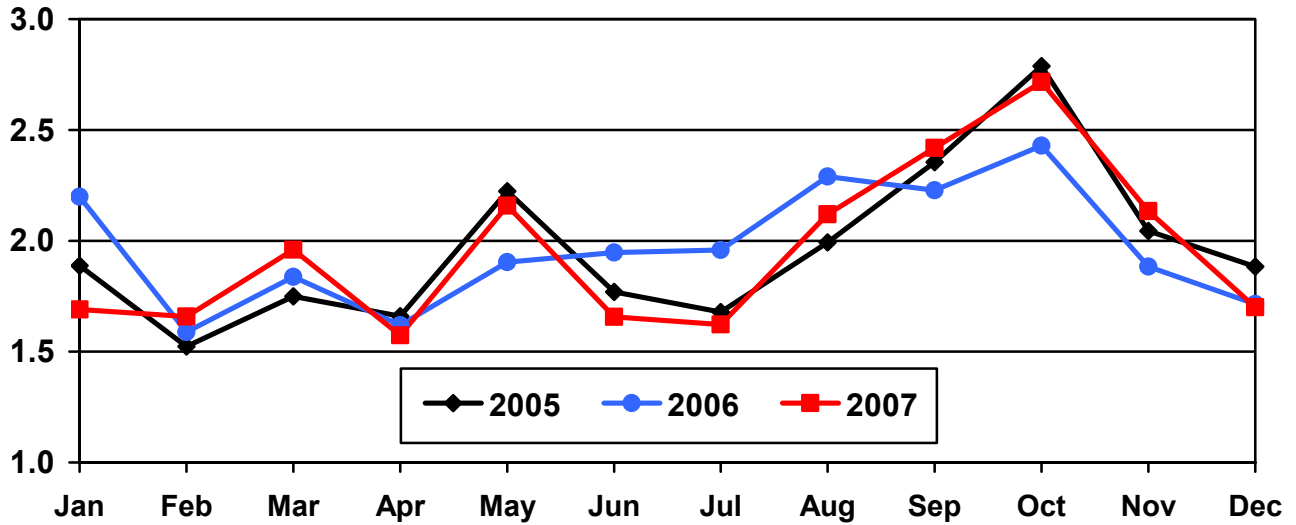
**Cattle on Feed: Number Placed on Feed, 1,000+ Capacity Feedlots,
by Month, State, and United States 2006-2007**

| State | During Dec 2006 | During Nov 2007 | During Dec 2007 | | |
|---------|--------------------|--------------------|-------------------|-----------------|----------------|
| | | | Number | as % of 2006 | as % of Nov |
| | <i>1,000 Head</i> | <i>1,000 Head</i> | <i>1,000 Head</i> | <i>Percent</i> | <i>Percent</i> |
| AZ | 26 | 37 | 26 | 100 | 70 |
| CA | 77 | 73 | 67 | 87 | 92 |
| CO | 135 | 190 | 170 | 126 | 89 |
| ID | 39 | 48 | 39 | 100 | 81 |
| IA | 82 | 96 | 71 | 87 | 74 |
| KS | 410 | 450 | 385 | 94 | 86 |
| NE | 390 | 485 | 355 | 91 | 73 |
| NM | 15 | *40 | 26 | 173 | 65 |
| OK | 46 | 62 | 44 | 96 | 71 |
| SD | 50 | 50 | 50 | 100 | 100 |
| TX | 370 | 510 | 380 | 103 | 75 |
| WA | 24 | 31 | 25 | 104 | 81 |
| Oth Sts | 50 | 62 | 63 | 126 | 102 |
| US | 1,714 | *2,134 | 1,701 | 99 | 80 |

*Revised.

**United States Cattle on Feed
1,000+ Capacity Feedlots Number Placed**

Million Head



**Cattle on Feed: Number Placed on Feed by Weight Group, 1,000+ Capacity
Feedlots, by Month, State, and United States, 2006-2007**

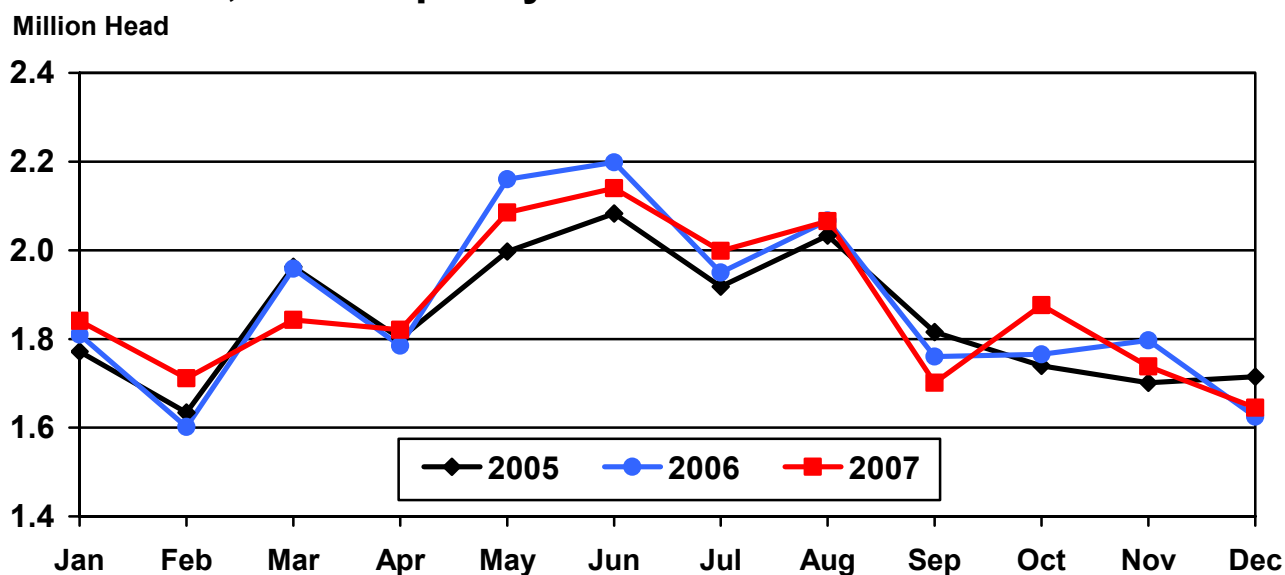
| State | During December | | | | | | | | | |
|---------|-------------------|-------------------|-------------------|-------------------|-------------------|-------------------|-------------------|-------------------|-------------------|-------------------|
| | Under 600 | | 600-699 | | 700-799 | | 800 Plus | | Total | |
| | 2006 | 2007 | 2006 | 2007 | 2006 | 2007 | 2006 | 2007 | 2006 | 2007 |
| | <i>1,000 Head</i> | <i>1,000 Head</i> | <i>1,000 Head</i> | <i>1,000 Head</i> | <i>1,000 Head</i> | <i>1,000 Head</i> | <i>1,000 Head</i> | <i>1,000 Head</i> | <i>1,000 Head</i> | <i>1,000 Head</i> |
| CO | 25 | 30 | 40 | 55 | 40 | 50 | 30 | 35 | 135 | 170 |
| KS | 95 | 80 | 140 | 120 | 105 | 120 | 70 | 65 | 410 | 385 |
| NE | 65 | 65 | 115 | 100 | 115 | 100 | 95 | 90 | 390 | 355 |
| TX | 140 | 145 | 115 | 125 | 80 | 80 | 35 | 30 | 370 | 380 |
| Oth Sts | 145 | 160 | 94 | 105 | 80 | 70 | 90 | 76 | 409 | 411 |
| US | 470 | 480 | 504 | 505 | 420 | 420 | 320 | 296 | 1,714 | 1,701 |
| | During November | | | | | | | | | |
| | Under 600 | | 600-699 | | 700-799 | | 800 Plus | | Total | |
| | 2006 | 2007 | 2006 | 2007 | 2006 | 2007 | 2006 | 2007 | 2006 | 2007 |
| | <i>1,000 Head</i> | <i>1,000 Head</i> | <i>1,000 Head</i> | <i>1,000 Head</i> | <i>1,000 Head</i> | <i>1,000 Head</i> | <i>1,000 Head</i> | <i>1,000 Head</i> | <i>1,000 Head</i> | <i>1,000 Head</i> |
| CO | 45 | 55 | 40 | 60 | 30 | 35 | 30 | 40 | 145 | 190 |
| KS | 110 | 140 | 115 | 135 | 105 | 100 | 75 | 75 | 405 | 450 |
| NE | 100 | 120 | 165 | 170 | 95 | 100 | 100 | 95 | 460 | 485 |
| TX | 145 | 180 | 130 | 165 | 100 | 110 | 60 | 55 | 435 | 510 |
| Oth Sts | 155 | 190 | 110 | *138 | 74 | 75 | 100 | 96 | 439 | *499 |
| US | 555 | 685 | 560 | *668 | 404 | 420 | 365 | 361 | 1,884 | *2,134 |

* Revised.

**Cattle on Feed: Number Marketed, 1,000+ Capacity Feedlots,
by Month, State, and United States 2006-2007**

| State | During Dec 2006 | During Nov 2007 | During Dec 2007 | | |
|---------|--------------------|--------------------|-------------------|-----------------|----------------|
| | | | Number | as % of 2006 | as % of Nov |
| | <i>1,000 Head</i> | <i>1,000 Head</i> | <i>1,000 Head</i> | <i>Percent</i> | <i>Percent</i> |
| AZ | 31 | 27 | 24 | 77 | 89 |
| CA | 63 | 61 | 60 | 95 | 98 |
| CO | 150 | 145 | 135 | 90 | 93 |
| ID | 41 | 42 | 42 | 102 | 100 |
| IA | 59 | 75 | 69 | 117 | 92 |
| KS | 390 | 355 | 390 | 100 | 110 |
| NE | 350 | 355 | 335 | 96 | 94 |
| NM | 15 | 23 | 13 | 87 | 57 |
| OK | 42 | 50 | 37 | 88 | 74 |
| SD | 32 | 38 | 33 | 103 | 87 |
| TX | 385 | 490 | 420 | 109 | 86 |
| WA | 24 | 27 | 28 | 117 | 104 |
| Oth Sts | 43 | 50 | 59 | 137 | 118 |
| US | 1,625 | 1,738 | 1,645 | 101 | 95 |

United States Cattle on Feed 1,000+ Capacity Feedlots Number Marketed



**Cattle on Feed: Other Disappearance, 1,000+ Capacity Feedlots,
by Month, State, and United States 2006-2007¹**

| State | During Dec 2006 | During Nov 2007 | During Dec 2007 | | |
|---------|--------------------|--------------------|-------------------|-----------------|----------------|
| | | | Number | as % of 2006 | as % of Nov |
| | <i>1,000 Head</i> | <i>1,000 Head</i> | <i>1,000 Head</i> | <i>Percent</i> | <i>Percent</i> |
| AZ | 2 | 3 | 1 | 50 | 33 |
| CA | 4 | 2 | 2 | 50 | 100 |
| CO | 5 | 5 | 5 | 100 | 100 |
| ID | 8 | 1 | 2 | 25 | 200 |
| IA | 3 | 1 | 2 | 67 | 200 |
| KS | 30 | 15 | 15 | 50 | 100 |
| NE | 10 | 10 | 10 | 100 | 100 |
| NM | 1 | 2 | 2 | 200 | 100 |
| OK | 4 | 2 | 2 | 50 | 100 |
| SD | 3 | 2 | 2 | 67 | 100 |
| TX | 15 | 10 | 10 | 67 | 100 |
| WA | 1 | 2 | 1 | 100 | 50 |
| Oth Sts | 2 | 2 | 4 | 200 | 200 |
| US | 88 | 57 | 58 | 66 | 102 |

¹ Includes death loss, movement from feedlots to pasture, and shipments to other feedlots for further feeding.

**Cattle on Feed: Number on Feed by Class, 1,000+ Capacity Feedlots,
by Quarter, State, and United States, 2007-2008**

| State | Steers & Steer Calves | | | Heifers & Heifer Calves | | | Cows and Bulls | | |
|---------|-----------------------|-------------------|-------------------|-------------------------|-------------------|-------------------|-------------------|-------------------|-------------------|
| | Jan 1, 2007 | Oct 1, 2007 | Jan 1, 2008 | Jan 1, 2007 | Oct 1, 2007 | Jan 1, 2008 | Jan 1, 2007 | Oct 1, 2007 | Jan 1, 2008 |
| | <i>1,000 Head</i> | <i>1,000 Head</i> | <i>1,000 Head</i> | <i>1,000 Head</i> | <i>1,000 Head</i> | <i>1,000 Head</i> | <i>1,000 Head</i> | <i>1,000 Head</i> | <i>1,000 Head</i> |
| AZ | 331 | 349 | 365 | 3 | 1 | 3 | 0 | 0 | 0 |
| CA | 495 | 490 | 500 | 55 | 50 | 60 | 0 | 0 | 0 |
| CO | 710 | 575 | 670 | 380 | 360 | 425 | 10 | 5 | 5 |
| ID | 148 | 114 | 127 | 102 | 91 | 98 | 10 | 5 | 10 |
| IA | 350 | 350 | 390 | 169 | 159 | 179 | 1 | 1 | 1 |
| KS | 1,360 | 1,220 | 1,350 | 1,155 | 1,065 | 1,120 | 25 | 25 | 10 |
| NE | 1,580 | 1,280 | 1,550 | 940 | 850 | 970 | 20 | 10 | 10 |
| NM | 82 | 82 | 90 | 54 | 51 | 70 | 0 | 0 | 0 |
| OK | 230 | 220 | 240 | 120 | 105 | 110 | 0 | 0 | 0 |
| SD | 115 | 87 | 111 | 85 | 80 | 90 | 25 | 13 | 29 |
| TX | 1,800 | 1,740 | 1,880 | 1,067 | 1,097 | 1,077 | 3 | 3 | 3 |
| WA | 103 | 80 | 88 | 80 | 73 | 75 | 1 | 1 | 1 |
| Oth Sts | 270 | 245 | 285 | 93 | 88 | 104 | 2 | 2 | 1 |
| US | 7,574 | 6,832 | 7,646 | 4,303 | 4,070 | 4,381 | 97 | 65 | 70 |

Terms and Definitions of Cattle on Feed Estimates

Cattle on feed are animals being fed a ration of grain, silage, hay and/or protein supplement for slaughter market that are expected to produce a carcass that will grade select or better. It excludes cattle being "backgrounded only" for later sale as feeders or later placement in another feedlot.

Placements are cattle put into a feedlot, fed a ration which will produce a carcass that will grade select or better, and are intended for the slaughter market.

Marketings are cattle shipped out of feedlots to a slaughter market.

Other disappearance includes death loss, movement from feedlots to pasture, and shipments to other feedlots for further feeding.

Reliability of Cattle on Feed Estimates

Survey Procedures: During January and July all known feedlots in the U.S. with capacity of 1,000 or more head are surveyed to provide data for cattle on feed estimates. During the other months, all known feedlots from 17 States are surveyed. The 17 States account for 98 percent of the cattle on feed in feedlots with capacity of 1,000 or more head.

Estimating Procedures: These cattle on feed estimates were prepared by the Agricultural Statistics Board after reviewing recommendations and analysis submitted by each State office. Regional and State survey data were reviewed for reasonableness with each other and with estimates from the previous month when setting the current estimates.

Revision Policy: Revisions to previous estimates are made to improve month to month relationships. Estimates for the previous month are subject to revision in all States each month when current estimates are made. In February, all monthly estimates for the previous year, and the number of feedlots and annual marketings from two years ago are reviewed and subject to revisions. The reviews are primarily based on slaughter data, state check-off or brand data, and any other data that may have been received after the original estimate was made. Estimates will also be reviewed after data from the Census of Agriculture are available. No revisions will be made after that date and estimates become final.

Reliability: Since all 1,000+ capacity cattle on feed operators in every State are not included in the monthly survey, survey estimates are subject to sampling variability. Survey results are also subject to non-sampling errors such as omissions, duplications, and mistakes in reporting, recording, and processing the data. The effects of these errors cannot be measured directly. They are minimized through rigid quality controls in the data collection process and through a careful review of all reported data for consistency and reasonableness.

To assist users in evaluating the reliability of estimates in this report, the "**Root Mean Square Error**" is shown for selected items in the following table. The "Root Mean Square Error" is a statistical measure based on past performance and is computed using the differences between first and latest estimates. The "Root Mean Square Error" for cattle on feed inventory estimates over the past 10 years is .2 percent. This means that chances are 2 out of 3 that the final estimate will not be

above or below the current estimate of 12.1 million head by more than .2 percent. Chances are 9 out of 10 that the difference will not exceed .4 percent.

The following table also shows a 10 year record of the range of differences between first and latest estimates for selected items. Using estimates of number on feed as an example, changes between the first estimate and the latest estimate during the past 10 years have averaged 14,000 head, ranging from 0 to 70,000 head. During this period the initial estimate has been below the final estimate 4 times, and above the final estimate 1 time. This does not imply that the initial estimate is likely to understate or overstate final inventory.

Reliability of U.S. January 1 Cattle on Feed Estimates ¹

| Item | Root Mean Square Error | 90% Confidence Level | | Difference Between First and Final Estimates ¹ | | | Number of Years | |
|----------------|------------------------|----------------------|-------------------|---|-------------------|-------------------|-------------------|-------------------|
| | | Percent | (000) Head | Average | Smallest | Largest | First Above Final | First Below Final |
| | <i>Percent</i> | <i>Percent</i> | <i>1,000 Head</i> | <i>1,000 Head</i> | <i>1,000 Head</i> | <i>1,000 Head</i> | <i>Number</i> | <i>Number</i> |
| Number on Feed | 0.2 | 0.4 | 53.7 | 14 | 0 | 70 | 1 | 4 |
| Placements | 0.5 | 0.9 | 16.1 | 4 | 0 | 20 | 0 | 2 |
| Marketings | 0.2 | 0.3 | 5.3 | 1 | 0 | 10 | 1 | 1 |

¹ Based on data for the past 10 years.

Information Contacts

Listed below are the commodity specialists in the Livestock Branch of the National Agricultural Statistics Service to contact for additional information.

Dan Kerestes, Chief, Livestock Branch (202) 720-3570

Livestock Section

Shawn Clark, Head, Livestock Section (202) 720-3570
 Bruce Boess - Hogs and Pigs (202) 720-3106
 Jim Collom - Dairy Products (202) 690-3236
 Joe Gaynor - Dairy Products Prices (202) 690-2168
 Jason Hardegree - Milk Production and Milk Cows (202) 720-3278
 Benita Hodge - Livestock Slaughter (515) 284-4340
 Scott Hollis - Sheep & Lambs, Goats & Kids (202) 720-4751
 Mike Miller - Cattle, Cattle on Feed (202) 720-3040

ACCESS TO REPORTS!!

For your convenience, there are several ways to obtain NASS reports, data products, and services:

INTERNET ACCESS

All NASS reports are available free of charge on the worldwide Internet. For access, connect to the Internet and go to the NASS Home Page at: www.nass.usda.gov.

E-MAIL SUBSCRIPTION

All NASS reports are available by subscription free of charge direct to your e-mail address. Starting with the NASS Home Page at www.nass.usda.gov, under the right navigation, *Receive reports by Email*, click on **National** or **State**. Follow the instructions on the screen.

PRINTED REPORTS OR DATA PRODUCTS

CALL OUR TOLL-FREE ORDER DESK: 800-999-6779 (U.S. and Canada)
Other areas, please call 703-605-6220 FAX: 703-605-6900
(Visa, MasterCard, check, or money order acceptable for payment.)

ASSISTANCE

For **assistance** with general agricultural statistics or further information about NASS or its products or services, contact the **Agricultural Statistics Hotline** at **800-727-9540**, 7:30 a.m. to 4:00 p.m. ET, or e-mail: nass@nass.usda.gov.

The U.S. Department of Agriculture (USDA) prohibits discrimination in all its programs and activities on the basis of race, color, national origin, age, disability, and where applicable, sex, marital status, familial status, parental status, religion, sexual orientation, genetic information, political beliefs, reprisal, or because all or a part of an individual's income is derived from any public assistance program. (Not all prohibited bases apply to all programs.) Persons with disabilities who require alternative means for communication of program information (Braille, large print, audiotape, etc.) should contact USDA's TARGET Center at (202) 720-2600 (voice and TDD).

To file a complaint of discrimination, write to USDA, Director, Office of Civil Rights, 1400 Independence Avenue, S.W., Washington, D.C. 20250-9410, or call (800) 795-3272 (voice) or (202) 720-6382 (TDD). USDA is an equal opportunity provider and employer.