



# Cattle On Feed

---

Released February 22, 2008, by the National Agricultural Statistics Service (NASS), Agricultural Statistics Board, U.S. Department of Agriculture. For information on *Cattle on Feed* call Mike Miller at (202) 720-3040, office hours 7:30 a.m. to 4:00 p.m. ET.

## U.S. Cattle on Feed Up 2 Percent

**Cattle and calves on feed** for slaughter market in the United States for feedlots with capacity of 1,000 or more head totaled 12.0 million head on February 1, 2008. The inventory was 2 percent above February 1, 2007 but 1 percent below February 1, 2006. This is the second highest February 1 inventory since the series began in 1996.

**Placements** in feedlots during January totaled 1.79 million, 6 percent above 2007 but 19 percent below 2006. Net placements were 1.73 million head. During January, placements of cattle and calves weighing less than 600 pounds were 400,000, 600-699 pounds were 467,000, 700-799 pounds were 525,000, and 800 pounds and greater were 395,000.

**Marketings** of fed cattle during January totaled 1.86 million, 1 percent above 2007 and 3 percent above 2006.

**Other disappearance** totaled 60,000 during January, 38 percent below 2007 and 28 percent below 2006.

## 2007 Cattle on Feed and Annual Size Group Estimates

This report contains the 2007 monthly cattle on feed estimates for feedlots with capacity of 1,000 or more head. Also included are the number of feedlots, inventory, and annual marketings by size group for 2006 and 2007. Data for total U.S. capacity of 1,000 or more head feedlots are also published in this issue. These data are measured by the number of head.

**Cattle and calves on feed** for slaughter market in the United States for feedlots with capacity of 1,000 or more head represented 84.5 percent of all cattle and calves on feed in the United States on January 1, 2008, up from 83.9 percent on January 1, 2007.

**Marketings** of fed cattle for feedlots with capacity of 1,000 or more head during 2007 represented 85.9 percent all cattle marketed from feedlots in the United States, down from 86.1 percent during 2006.



## Contents

## Page

U.S. Cattle on Feed: Number on Feed, Placements, Marketings and Other Disappearance .....	1
Cattle on Feed: Number on Feed, 1000+ Capacity Feedlots, by State and United States.....	2
Cattle on Feed: Number Placed on Feed, 1000+ Capacity Feedlots, by State and United States .....	3
Cattle on Feed: Number Marketed and Other Disappearance, by State and United States.....	4
Cattle on Feed: Number on Feed, by State and United States.....	5
Cattle on Feed: Number Placed on Feed, by State and United States.....	6
Cattle on Feed: Number Placed on Feed by Weight Group, by State and United States .....	7
Cattle on Feed: Number Marketed by State and United States .....	11
Cattle on Feed: Other Disappearance by State and United States.....	12
Cattle on Feed: Number on Feed by Class .....	13
Cattle on Feed: Number of Feedlots, Inventory and Marketings by Size of Feedlot .....	14
Cattle on Feed: Feedlot Capacity .....	17
Cattle on Feed: Number of Feedlots, Inventory and Marketings by Size of Feedlot, by Region.....	18
Cattle on Feed: Feedlots with Less Than 1,000 Head Capacity .....	20
Reliability Statement .....	21
Information Contacts.....	22

**Cattle on Feed: Number on Feed, Placements, Marketings, and  
Other Disappearance, 1,000+ Capacity Feedlots,  
United States, February 1, 2006-2008**

Item	Number			2008 as % of	
	2006	2007	2008	2006	2007
	<i>1,000 Head</i>	<i>1,000 Head</i>	<i>1,000 Head</i>	<i>Percent</i>	<i>Percent</i>
On Feed Jan 1 <sup>1</sup>	11,804	11,974	12,097	102	101
Placed on Feed During Jan	2,199	1,690	1,787	81	106
Fed Cattle Marketed During Jan	1,810	1,841	1,858	103	101
Other Disappearance During Jan <sup>2</sup>	83	97	60	72	62
On Feed Feb 1	12,110	11,726	11,966	99	102

<sup>1</sup> Cattle and calves on feed are animals for slaughter market being fed a ration of grain or other concentrates and are expected to produce a carcass that will grade select or better.

<sup>2</sup> Includes death loss, movement from feedlots to pasture, and shipments to other feedlots for further feeding.

**Cattle on Feed: Number on Feed, Placements, Marketings, and  
Other Disappearance, 1,000+ Capacity Feedlots,  
United States, January 1, 2006-2008**

Item	Number			2008 as % of	
	2006	2007	2008	2006	2007
	<i>1,000 Head</i>	<i>1,000 Head</i>	<i>1,000 Head</i>	<i>Percent</i>	<i>Percent</i>
On Feed Dec 1 <sup>1 2</sup>	11,726	11,973	12,099	103	101
Placed on Feed During Dec <sup>2</sup>	1,884	1,714	1,701	90	99
Fed Cattle Marketed During Dec <sup>2</sup>	1,715	1,625	1,645	96	101
Other Disappearance During Dec <sup>2 3</sup>	91	88	58	64	66
On Feed Jan 1 <sup>1</sup>	11,804	11,974	12,097	102	101

<sup>1</sup> Cattle and calves on feed are animals for slaughter market being fed a ration of grain or other concentrates and are expected to produce a carcass that will grade select or better.

<sup>2</sup> December preceding year.

<sup>3</sup> Includes death loss, movement from feedlots to pasture, and shipments to other feedlots for further feeding.

**Cattle on Feed: Number on Feed by Class, 1,000+ Capacity Feedlots,  
United States, January 1, 2006-2008**

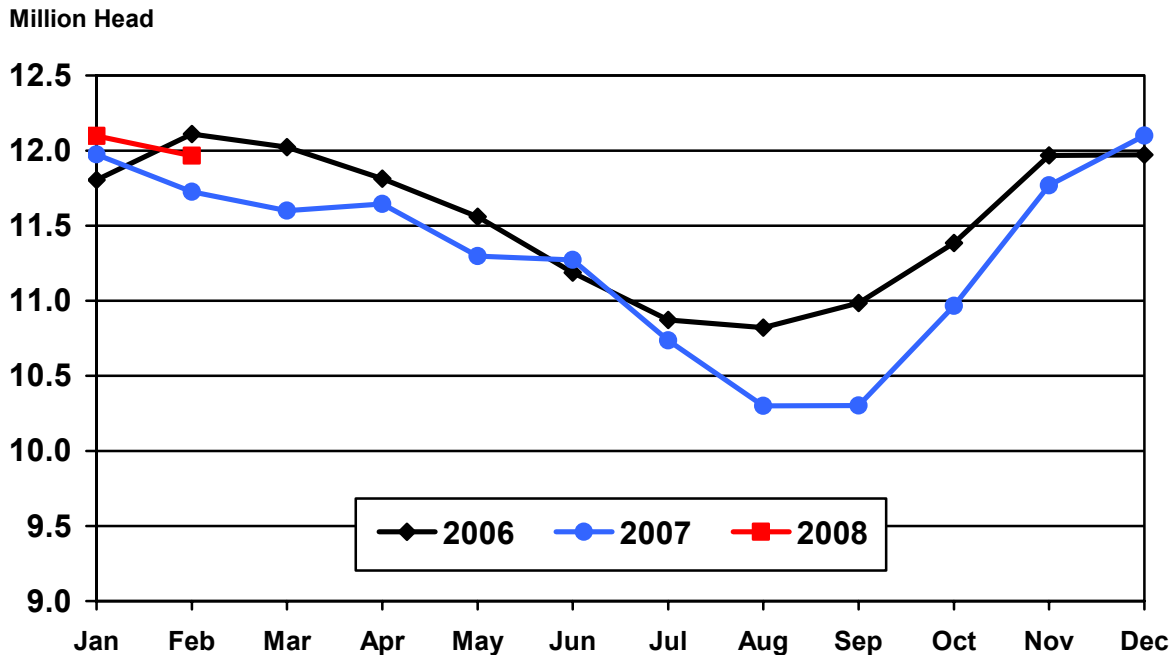
Item	Number			2008 as % of	
	2006	2007	2008	2006	2007
	<i>1,000 Head</i>	<i>1,000 Head</i>	<i>1,000 Head</i>	<i>Percent</i>	<i>Percent</i>
Class on Feed Jan 1					
Steers and Steer Calves	7,570	7,574	7,646	101	101
Heifers and Heifer Calves	4,147	4,303	4,381	106	102
Cows and Bulls	87	97	70	80	72

**Cattle on Feed: Number on Feed, 1,000+ Capacity Feedlots,  
by Month, State, and United States 2007-2008<sup>1</sup>**

State	Feb 1, 2007	Jan 1, 2008	Feb 1, 2008		
			Number	as % of 2007	as % of Jan
	<i>1,000 Head</i>	<i>1,000 Head</i>	<i>1,000 Head</i>	<i>Percent</i>	<i>Percent</i>
AZ	334	368	373	112	101
CA	540	560	555	103	99
CO	1,040	1,100	1,090	105	99
ID	255	235	235	92	100
IA	530	570	570	108	100
KS	2,430	2,480	2,430	100	98
NE	2,540	2,530	2,510	99	99
NM	135	160	160	119	100
OK	350	350	355	101	101
SD	230	230	230	100	100
TX	2,800	2,960	2,930	105	99
WA	177	164	153	86	93
Oth Sts	365	390	375	103	96
US	11,726	12,097	11,966	102	99

<sup>1</sup> Cattle and calves on feed are animals for slaughter market being fed a ration of grain or other concentrates and are expected to produce a carcass that will grade select or better.

## United States Cattle on Feed 1,000+ Capacity Feedlots



**Cattle on Feed: Number Placed on Feed, 1,000+ Capacity Feedlots,  
by Month, State, and United States 2007-2008**

State	During Jan 2007	During Dec 2007	During Jan 2008		
			Number	as % of 2007	as % of Dec
	<i>1,000 Head</i>	<i>1,000 Head</i>	<i>1,000 Head</i>	<i>Percent</i>	<i>Percent</i>
AZ	33	26	35	106	135
CA	64	67	76	119	113
CO	155	170	180	116	106
ID	43	39	43	100	110
IA	76	71	72	95	101
KS	365	385	405	111	105
NE	420	355	380	90	107
NM	8	26	16	200	62
OK	50	44	54	108	123
SD	50	50	45	90	90
TX	340	380	400	118	105
WA	27	25	27	100	108
Oth Sts	59	63	54	92	86
US	1,690	1,701	1,787	106	105

**Cattle on Feed: Number Placed on Feed by Weight Group, 1,000+ Capacity  
Feedlots, by Month, State, and United States, 2006-2008**

State	During January									
	Under 600		600-699		700-799		800 Plus		Total	
	2007	2008	2007	2008	2007	2008	2007	2008	2007	2008
	<i>1,000 Head</i>	<i>1,000 Head</i>	<i>1,000 Head</i>	<i>1,000 Head</i>	<i>1,000 Head</i>	<i>1,000 Head</i>	<i>1,000 Head</i>	<i>1,000 Head</i>	<i>1,000 Head</i>	<i>1,000 Head</i>
CO	15	20	35	45	55	55	50	60	155	180
KS	50	55	110	120	125	140	80	90	365	405
NE	45	50	85	90	150	125	140	115	420	380
TX	85	135	85	125	120	110	50	30	340	400
Oth Sts	125	140	75	87	95	95	115	100	410	422
US	320	400	390	467	545	525	435	395	1,690	1,787
State	During December									
	Under 600		600-699		700-799		800 Plus		Total	
	2006	2007	2006	2007	2006	2007	2006	2007	2006	2007
	<i>1,000 Head</i>	<i>1,000 Head</i>	<i>1,000 Head</i>	<i>1,000 Head</i>	<i>1,000 Head</i>	<i>1,000 Head</i>	<i>1,000 Head</i>	<i>1,000 Head</i>	<i>1,000 Head</i>	<i>1,000 Head</i>
CO	25	30	40	55	40	50	30	35	135	170
KS	95	80	140	120	105	120	70	65	410	385
NE	65	65	115	100	115	100	95	90	390	355
TX	140	145	115	125	80	80	35	30	370	380
Oth Sts	145	160	94	105	80	70	90	76	409	411
US	470	480	504	505	420	420	320	296	1,714	1,701

**Cattle on Feed: Number Marketed, 1,000+ Capacity Feedlots,  
by Month, State, and United States 2007-2008**

State	During Jan 2007	During Dec 2007	During Jan 2008		
			Number	as % of 2007	as % of Dec
	<i>1,000 Head</i>	<i>1,000 Head</i>	<i>1,000 Head</i>	<i>Percent</i>	<i>Percent</i>
AZ	32	24	29	91	121
CA	72	60	72	100	120
CO	200	135	185	93	137
ID	47	42	42	89	100
IA	64	69	69	108	100
KS	445	390	445	100	114
NE	405	335	390	96	116
NM	8	13	15	188	115
OK	48	37	47	98	127
SD	42	33	43	102	130
TX	390	420	420	108	100
WA	33	28	36	109	129
Oth Sts	55	59	65	118	110
US	1,841	1,645	1,858	101	113

**Cattle on Feed: Other Disappearance, 1,000+ Capacity Feedlots,  
by Month, State, and United States 2007-2008<sup>1</sup>**

State	During Jan 2007	During Dec 2007	During Jan 2008		
			Number	as % of 2007	as % of Dec
	<i>1,000 Head</i>	<i>1,000 Head</i>	<i>1,000 Head</i>	<i>Percent</i>	<i>Percent</i>
AZ	1	1	1	100	100
CA	2	2	9	450	450
CO	15	5	5	33	100
ID	1	2	1	100	50
IA	2	2	3	150	150
KS	30	15	10	33	67
NE	15	10	10	67	100
NM	1	2	1	100	50
OK	2	2	2	100	100
SD	3	2	2	67	100
TX	20	10	10	50	100
WA	1	1	2	200	200
Oth Sts	4	4	4	100	100
US	97	58	60	62	103

<sup>1</sup> Includes death loss, movement from feedlots to pasture, and shipments to other feedlots for further feeding.

**Cattle on Feed: Number on Feed, 1,000+ Capacity Feedlots,  
by Month, State, and United States, 2007<sup>1</sup>**

State	Jan 1	Feb 1	Mar 1	Apr 1	May 1	Jun 1
	<i>1,000 Head</i>	<i>1,000 Head</i>	<i>1,000 Head</i>	<i>1,000 Head</i>	<i>1,000 Head</i>	<i>1,000 Head</i>
AZ	334	334	329	340	340	340
CA	550	540	530	530	550	555
CO	1,100	1,040	1,010	1,020	1,020	1,020
ID	260	255	250	245	235	230
IA	520	530	530	530	530	520
KS	2,540	2,430	2,420	2,480	2,350	2,290
NE	2,540	2,540	2,510	2,480	2,420	2,290
NM	136	135	130	131	118	128
OK	350	350	350	350	335	340
SD	225	230	230	230	230	215
TX	2,870	2,800	2,790	2,800	2,680	2,870
WA	184	177	170	163	154	149
Oth Sts	365	365	350	345	335	325
US	11,974	11,726	11,599	11,644	11,297	11,272
	Jul 1	Aug 1	Sep 1	Oct 1	Nov 1	Dec 1
	<i>1,000 Head</i>	<i>1,000 Head</i>	<i>1,000 Head</i>	<i>1,000 Head</i>	<i>1,000 Head</i>	<i>1,000 Head</i>
AZ	343	341	348	350	360	367
CA	545	540	530	540	545	555
CO	940	870	850	940	1,030	1,070
ID	220	205	205	210	235	240
IA	510	500	490	510	550	570
KS	2,140	2,100	2,140	2,310	2,420	2,500
NE	2,050	1,910	1,930	2,140	2,400	2,520
NM	132	129	131	133	*143	149
OK	325	305	310	325	335	345
SD	197	175	175	180	205	215
TX	2,870	2,780	2,740	2,840	3,000	3,010
WA	150	144	148	154	166	168
Oth Sts	315	300	305	335	380	390
US	10,737	10,299	10,302	10,967	*11,769	12,099

\* Revised.

<sup>1</sup> Cattle and calves on feed are animals for slaughter market being fed a ration of grain or other concentrates and are expected to produce a carcass that will grade select or better.





**Cattle on Feed: Number Placed on Feed by Weight Group, 1,000+ Capacity  
Feedlots, by Month, State, and United States, 2006-2007**

State	During December				
	Under 600	600-699	700-799	800 Plus	Total
	<i>1,000 Head</i>	<i>1,000 Head</i>	<i>1,000 Head</i>	<i>1,000 Head</i>	<i>1,000 Head</i>
CO	25	40	40	30	135
KS	95	140	105	70	410
NE	65	115	115	95	390
TX	140	115	80	35	370
Oth Sts	145	94	80	90	409
US	470	504	420	320	1,714
	During January				
	Under 600	600-699	700-799	800 Plus	Total
	<i>1,000 Head</i>	<i>1,000 Head</i>	<i>1,000 Head</i>	<i>1,000 Head</i>	<i>1,000 Head</i>
CO	15	35	55	50	155
KS	50	110	125	80	365
NE	45	85	150	140	420
TX	85	85	120	50	340
Oth Sts	125	75	95	115	410
US	320	390	545	435	1,690
	During February				
	Under 600	600-699	700-799	800 Plus	Total
	<i>1,000 Head</i>	<i>1,000 Head</i>	<i>1,000 Head</i>	<i>1,000 Head</i>	<i>1,000 Head</i>
CO	15	30	45	50	140
KS	50	85	145	115	395
NE	40	60	110	150	360
TX	100	100	120	70	390
Oth Sts	120	59	85	110	374
US	325	334	505	495	1,659

--continued

**Cattle on Feed: Number Placed on Feed by Weight Group, 1,000+ Capacity  
Feedlots, by Month, State, and United States, 2006-2007 (continued)**

State	During March				
	Under 600	600-699	700-799	800 Plus	Total
	<i>1,000 Head</i>	<i>1,000 Head</i>	<i>1,000 Head</i>	<i>1,000 Head</i>	<i>1,000 Head</i>
CO	15	30	50	65	160
KS	70	115	170	155	510
NE	40	50	110	150	350
TX	90	120	200	110	520
Oth Sts	130	60	110	120	420
US	345	375	640	600	1,960
	During April				
	Under 600	600-699	700-799	800 Plus	Total
	<i>1,000 Head</i>	<i>1,000 Head</i>	<i>1,000 Head</i>	<i>1,000 Head</i>	<i>1,000 Head</i>
CO	30	30	40	*50	*150
KS	60	65	110	120	355
NE	50	40	80	120	290
TX	105	75	110	90	380
Oth Sts	130	53	90	120	393
US	375	263	430	*500	*1,568
	During May				
	Under 600	600-699	700-799	800 Plus	Total
	<i>1,000 Head</i>	<i>1,000 Head</i>	<i>1,000 Head</i>	<i>1,000 Head</i>	<i>1,000 Head</i>
CO	25	30	50	70	175
KS	80	85	135	165	465
NE	55	60	110	165	390
TX	130	145	260	175	710
Oth Sts	130	54	90	145	419
US	420	374	645	720	2,159

See footnote(s) at end of table.

--continued

**Cattle on Feed: Number Placed on Feed by Weight Group, 1,000+ Capacity  
Feedlots, by Month, State, and United States, 2006-2007 (continued)**

State	During June				
	Under 600	600-699	700-799	800 Plus	Total
	<i>1,000 Head</i>	<i>1,000 Head</i>	<i>1,000 Head</i>	<i>1,000 Head</i>	<i>1,000 Head</i>
CO	15	20	35	50	120
KS	80	70	125	100	375
NE	75	55	70	130	330
TX	110	135	160	80	485
Oth Sts	125	45	67	110	347
US	405	325	457	470	1,657
	During July				
	Under 600	600-699	700-799	800 Plus	Total
	<i>1,000 Head</i>	<i>1,000 Head</i>	<i>1,000 Head</i>	<i>1,000 Head</i>	<i>1,000 Head</i>
CO	15	20	35	45	115
KS	75	90	140	125	430
NE	55	60	90	145	350
TX	110	100	115	65	390
Oth Sts	105	42	65	125	337
US	360	312	445	505	1,622
	During August				
	Under 600	600-699	700-799	800 Plus	Total
	<i>1,000 Head</i>	<i>1,000 Head</i>	<i>1,000 Head</i>	<i>1,000 Head</i>	<i>1,000 Head</i>
CO	25	30	40	75	170
KS	100	120	160	140	520
NE	75	70	115	205	465
TX	160	160	140	60	520
Oth Sts	130	60	94	160	444
US	490	440	549	640	2,119

See footnote(s) at end of table.

--continued

**Cattle on Feed: Number Placed on Feed by Weight Group, 1,000+ Capacity  
Feedlots, by Month, State, and United States, 2006-2007 (continued)**

State	During September				
	Under 600	600-699	700-799	800 Plus	Total
	<i>1,000 Head</i>	<i>1,000 Head</i>	<i>1,000 Head</i>	<i>1,000 Head</i>	<i>1,000 Head</i>
CO	35	40	60	*120	*255
KS	140	140	130	130	540
NE	100	80	120	240	540
TX	190	170	165	65	590
Oth Sts	145	75	90	180	490
US	610	505	565	*735	*2,415
	During October				
	Under 600	600-699	700-799	800 Plus	Total
	<i>1,000 Head</i>	<i>1,000 Head</i>	<i>1,000 Head</i>	<i>1,000 Head</i>	<i>1,000 Head</i>
CO	65	65	55	75	260
KS	175	135	125	95	530
NE	175	175	110	160	620
TX	210	230	180	80	700
Oth Sts	*240	140	*85	150	*615
US	*865	745	*555	560	*2,725
	During November				
	Under 600	600-699	700-799	800 Plus	Total
	<i>1,000 Head</i>	<i>1,000 Head</i>	<i>1,000 Head</i>	<i>1,000 Head</i>	<i>1,000 Head</i>
CO	55	60	35	40	190
KS	140	135	100	75	450
NE	120	170	100	95	485
TX	180	165	110	55	510
Oth Sts	190	*130	75	*95	*490
US	685	*660	420	*360	*2,125

\* Revised.

**Cattle on Feed: Number Marketed, 1,000+ Capacity Feedlots,  
by Month, State, and United States, 2006-2007**

State	During					
	Dec	Jan	Feb	Mar	Apr	May
	<i>1,000 Head</i>	<i>1,000 Head</i>	<i>1,000 Head</i>	<i>1,000 Head</i>	<i>1,000 Head</i>	<i>1,000 Head</i>
AZ	31	32	28	33	30	32
CA	63	72	67	65	61	65
CO	150	200	160	140	*130	155
ID	41	47	43	42	40	42
IA	59	64	63	70	59	63
KS	390	445	380	430	445	500
NE	350	405	380	370	340	500
NM	15	8	18	17	24	23
OK	42	48	58	67	68	65
SD	32	42	41	37	34	45
TX	385	390	385	495	490	510
WA	24	33	31	32	30	33
Oth Sts	43	55	57	45	65	52
US	1,625	1,841	1,711	1,843	*1,816	2,085
	During					
	Jun	Jul	Aug	Sep	Oct	Nov
	<i>1,000 Head</i>	<i>1,000 Head</i>	<i>1,000 Head</i>	<i>1,000 Head</i>	<i>1,000 Head</i>	<i>1,000 Head</i>
AZ	35	33	28	24	27	27
CA	60	54	62	47	60	61
CO	190	175	185	*160	165	145
ID	46	49	47	41	43	42
IA	61	73	80	79	79	75
KS	515	450	465	355	410	355
NE	560	480	435	320	350	355
NM	17	14	19	13	19	23
OK	66	67	69	56	63	50
SD	39	42	36	37	45	38
TX	475	470	550	480	530	490
WA	30	32	30	29	29	27
Oth Sts	46	60	60	55	56	50
US	2,140	1,999	2,066	*1,696	1,876	1,738

\* Revised.

**Cattle on Feed: Other Disappearance, 1,000+ Capacity Feedlots,  
by Month, State, and United States, 2006-2007<sup>1</sup>**

State	During					
	Dec	Jan	Feb	Mar	Apr	May
	<i>1,000 Head</i>	<i>1,000 Head</i>	<i>1,000 Head</i>	<i>1,000 Head</i>	<i>1,000 Head</i>	<i>1,000 Head</i>
AZ	2	1	1	2	1	4
CA	4	2	3	3	4	3
CO	5	15	10	10	20	20
ID	8	1	1	1	5	6
IA	3	2	1	2	2	1
KS	30	30	25	20	40	25
NE	10	15	10	10	10	20
NM	1	1	1	1	1	1
OK	4	2	1	1	1	1
SD	3	3	2	3	2	4
TX	15	20	15	15	10	10
WA	1	1	1	1	1	1
Oth Sts	2	4	4	3	2	3
US	88	97	75	72	99	99
	During					
	Jun	Jul	Aug	Sep	Oct	Nov
	<i>1,000 Head</i>	<i>1,000 Head</i>	<i>1,000 Head</i>	<i>1,000 Head</i>	<i>1,000 Head</i>	<i>1,000 Head</i>
AZ	1	1	1	2	2	3
CA	3	2	2	3	2	2
CO	10	10	5	5	5	5
ID	1	1	1	2	1	1
IA	1	1	1	1	1	1
KS	10	20	15	15	10	15
NE	10	10	10	10	10	10
NM	1	1	1	2	2	2
OK	1	1	1	1	1	2
SD	3	2	1	1	1	2
TX	10	10	10	10	10	10
WA	0	1	1	1	1	2
Oth Sts	1	1	1	1	1	2
US	52	61	50	54	47	57

<sup>1</sup> Includes death loss, movement from feedlots to pasture, and shipments to other feedlots for further feeding.

**Cattle on Feed: Number on Feed by Class, 1,000+ Capacity Feedlots,  
by Quarter, State, and United States, 2007**

State	Steers & Steer Calves				Heifers & Heifer Calves			
	Jan 1	Apr 1	Jul 1	Oct 1	Jan 1	Apr 1	Jul 1	Oct 1
	<i>1,000 Head</i>	<i>1,000 Head</i>	<i>1,000 Head</i>	<i>1,000 Head</i>	<i>1,000 Head</i>	<i>1,000 Head</i>	<i>1,000 Head</i>	<i>1,000 Head</i>
AZ	331	339	342	349	3	1	1	1
CA	495	485	490	490	55	45	54	50
CO	710	660	590	575	380	355	345	360
ID	148	146	133	114	102	96	83	91
IA	350	350	340	350	169	179	169	159
KS	1,360	1,340	1,090	1,220	1,155	1,115	1,030	1,065
NE	1,580	1,520	1,230	1,280	940	950	810	850
NM	82	81	84	82	54	50	48	51
OK	230	235	225	220	120	115	100	105
SD	115	130	98	87	85	82	80	80
TX	1,800	1,780	1,780	1,740	1,067	1,017	1,087	1,097
WA	103	87	90	80	80	75	59	73
Oth Sts	270	280	250	245	93	62	62	88
US	7,574	7,433	6,742	6,832	4,303	4,142	3,928	4,070
	<b>Cows and Bulls</b>							
	Jan 1	Apr 1	Jul 1	Oct 1				
	<i>1,000 Head</i>	<i>1,000 Head</i>	<i>1,000 Head</i>	<i>1,000 Head</i>				
AZ	0	0	0	0				
CA	0	0	0	1				
CO	10	5	5	5				
ID	10	3	4	5				
IA	1	1	1	1				
KS	25	25	20	25				
NE	20	10	10	10				
NM	0	0	0	0				
OK	0	0	0	0				
SD	25	18	19	13				
TX	3	3	3	3				
WA	1	1	1	1				
Oth Sts	2	3	3	2				
US	97	69	67	65				



**Cattle on Feed: Number of Feedlots, Inventory, and Marketings, by  
Size of Feedlot, United States 2006-2007<sup>1</sup> (continued)**

Year and State	Feedlot Capacity in Number of Head					
	1,000 - 1,999			2,000 - 3,999		
	Lots	Inventory	Cattle Marketed	Lots	Inventory	Cattle Marketed
	<i>Number</i>	<i>1,000 Head</i>	<i>1,000 Head</i>	<i>Number</i>	<i>1,000 Head</i>	<i>1,000 Head</i>
2006	818	488	797	552	804	1,347
2007	809	457	780	564	816	1,395

<sup>1</sup> Number of feedlots is the number of lots operating at anytime during the year. Inventory is the number on hand January 1 of the following year. The United States totals show the actual number of feedlots, inventory, and number of animals marketed in each size group. The sum of the number shown by State under a specified size group may or may not add to the United States total for that size group since for some states size groups are combined to avoid disclosing individual operations.

**Cattle on Feed: Number of Feedlots, Inventory, and Marketings, by  
Size of Feedlot, United States 2006-2007<sup>1</sup> (continued)**

Year and State	Feedlot Capacity in Number of Head					
	4,000 - 7,999			8,000 -15,999		
	Lots	Inventory	Cattle Marketed	Lots	Inventory	Cattle Marketed
	<i>Number</i>	<i>1,000 Head</i>	<i>1,000 Head</i>	<i>Number</i>	<i>1,000 Head</i>	<i>1,000 Head</i>
2006	344	1,035	1,773	190	1,412	2,713
2007	343	1,140	1,974	182	1,372	2,535

<sup>1</sup> Number of feedlots is the number of lots operating at anytime during the year. Inventory is the number on hand January 1 of the following year. The United States totals show the actual number of feedlots, inventory, and number of animals marketed in each size group. The sum of the number shown by State under a specified size group may or may not add to the United States total for that size group since for some states size groups are combined to avoid disclosing individual operations.

**Cattle on Feed: Number of Feedlots, Inventory, and Marketings,  
by Size of Feedlot, State, and United States 2006-2007 <sup>1</sup> (continued)**

Year and State	Feedlot Capacity in Number of Head					
	1,000 - 3,999			4,000 - 15,999		
	Lots	Inventory	Cattle Marketed	Lots	Inventory	Cattle Marketed
	<i>Number</i>	<i>1,000 Head</i>	<i>1,000 Head</i>	<i>Number</i>	<i>1,000 Head</i>	<i>1,000 Head</i>
2006						
AZ						
CA	4	4	6	5	22	22
CO	62	55	85	50	200	310
ID	17	13	28	22	85	191
IA	300	355	570	<sup>2</sup> 35	<sup>2</sup> 165	<sup>2</sup> 258
KS	60	75	135	81	450	855
NE	530	500	870	199	1,000	1,870
NM				<sup>2</sup> 4	<sup>2</sup> 11	<sup>2</sup> 18
OK	3	4	7	11	46	95
SD	141	114	186	<sup>2</sup> 27	<sup>2</sup> 111	<sup>2</sup> 239
TX	11	11	25	38	224	470
WA	<sup>2</sup> 7	<sup>2</sup> 15	<sup>2</sup> 22	<sup>2</sup> 6	<sup>2</sup> 55	<sup>2</sup> 97
Oth Sts	240	160	230	<sup>2</sup> 60	<sup>2</sup> 205	<sup>2</sup> 337
US	1,370	1,292	2,144	534	2,447	4,486
2007						
AZ						
CA	4	4	5	3	11	13
CO	58	60	85	48	190	280
ID	14	14	31	18	68	145
IA	303	375	540	<sup>2</sup> 42	<sup>2</sup> 195	<sup>2</sup> 295
KS	60	70	135	76	440	810
NE	525	430	850	203	1,060	2,030
NM				<sup>2</sup> 4	<sup>2</sup> 10	<sup>2</sup> 18
OK	3	4	7	11	48	82
SD	148	110	202	<sup>2</sup> 28	<sup>2</sup> 120	<sup>2</sup> 267
TX	11	10	20	37	250	400
WA	<sup>2</sup> 5	<sup>2</sup> 20	<sup>2</sup> 28	<sup>2</sup> 4	<sup>2</sup> 46	<sup>2</sup> 118
Oth Sts	245	190	290	<sup>2</sup> 55	<sup>2</sup> 200	<sup>2</sup> 370
US	1,373	1,273	2,175	525	2,512	4,509

See footnote(s) at end of table.

--continued

**Cattle on Feed: Number of Feedlots, Inventory, and Marketings, by  
Size of Feedlot, State, and United States 2006-2007 <sup>1</sup> (continued)**

Year and State	Feedlot Capacity in Number of Head					
	16,000 - 31,999			32,000 and Over		
	Lots	Inventory	Cattle Marketed	Lots	Inventory	Cattle Marketed
	<i>Number</i>	<i>1,000 Head</i>	<i>1,000 Head</i>	<i>Number</i>	<i>1,000 Head</i>	<i>1,000 Head</i>
2006						
AZ	<sup>2</sup> 3	<sup>2</sup> 28	<sup>2</sup> 34	3	306	303
CA	6	120	160	6	404	572
CO	13	270	390	13	575	1,150
ID	<sup>2</sup> 6	<sup>2</sup> 162	<sup>2</sup> 323			
IA						
KS	33	655	1,390	31	1,360	3,020
NE	30	580	1,115	11	460	780
NM	2	27	56	2	98	152
OK	3	72	135	6	228	495
SD						
TX	32	575	1,070	49	2,060	4,210
WA				3	114	196
Oth Sts						
US	135	2,522	4,758	126	5,713	11,089
2007						
AZ	<sup>2</sup> 3	<sup>2</sup> 27	<sup>2</sup> 34	3	341	319
CA	7	102	128	7	443	588
CO	13	225	355	13	625	1,220
ID	<sup>2</sup> 7	<sup>2</sup> 153	<sup>2</sup> 348			
IA						
KS	33	630	1,305	31	1,340	2,890
NE	29	525	1,035	13	515	915
NM	2	45	43	2	105	147
OK	3	48	130	6	250	495
SD						
TX	31	540	995	49	2,160	4,270
WA				3	98	218
Oth Sts						
US	133	2,339	4,495	129	5,973	11,277

See footnote(s) at end of table.

--continued

**Cattle on Feed: Number of Feedlots, Inventory, and Marketings, by  
Size of Feedlot, State, and United States 2006-2007 <sup>1</sup> (continued)**

Year and State	Feedlot Capacity in Number of Head		
	Total - 1,000+ Capacity Feedlots		
	Lots	Inventory	Cattle Marketed
	<i>Number</i>	<i>1,000 Head</i>	<i>1,000 Head</i>
2006			
AZ	6	334	337
CA	21	550	760
CO	138	1,100	1,935
ID	45	260	542
IA	335	520	828
KS	205	2,540	5,400
NE	770	2,540	4,635
NM	8	136	226
OK	23	350	732
SD	168	225	425
TX	130	2,870	5,775
WA	16	184	315
Oth Sts	300	365	567
US	2,165	11,974	22,477
2007			
AZ	6	368	353
CA	21	560	734
CO	132	1,100	1,940
ID	39	235	524
IA	345	570	835
KS	200	2,480	5,140
NE	770	2,530	4,830
NM	8	160	208
OK	23	350	714
SD	176	230	469
TX	128	2,960	5,685
WA	12	164	364
Oth Sts	300	390	660
US	2,160	12,097	22,456

\* Revised.

<sup>1</sup> Number of feedlots is the number of lots operating at anytime during the year. Inventory is the number on hand January 1 of the following year. The United States totals show the actual number of feedlots, inventory, and number of animals marketed in each size group. The sum of the numbers shown by State under a specified size group may or may not add to the United States total for that size group since for some States size groups are combined to avoid disclosing individual operations.

<sup>2</sup> Lots, inventory, and marketings from other size groups are included to avoid disclosing individual operations.

**Cattle on Feed: Feedlot Capacity, 1000+ Capacity Feedlots,  
United States, January 1, 2006-2008 <sup>1</sup>**

Item	Feedlot Capacity in Number of Head		
	2006	2007	2008
	<i>1,000 Head</i>	<i>1,000 Head</i>	<i>1,000 Head</i>
US	16,800	16,800	16,800

<sup>1</sup> Total capacity of all 1000+ capacity feedlots in the U.S.

**Cattle on Feed: Number of Feedlots, Inventory, and Marketings,  
by Size of Feedlot, Region, and United States 2006-2007 <sup>1</sup>**

Year and State	Feedlot Capacity in Number of Head					
	16,000 - 23,999			24,000 - 31,999		
	Lots	Inventory	Cattle Marketed	Lots	Inventory	Cattle Marketed
	<i>Number</i>	<i>1,000 Head</i>	<i>1,000 Head</i>	<i>Number</i>	<i>1,000 Head</i>	<i>1,000 Head</i>
2006						
AZ,CA, TX	19	280	500	20	436	756
CO,KS,NE	47	765	1,425	29	740	1,470
Oth Sts	8	125	270	12	176	337
US	74	1,170	2,195	61	1,352	2,563
2007						
AZ,CA, TX	21	291	493	18	374	657
CO,KS,NE	48	730	1,375	27	650	1,320
Oth Sts	9	130	298	10	164	352
US	78	1,151	2,166	55	1,188	2,329

See footnote(s) at end of table.

--continued

**Cattle on Feed: Number of Feedlots, Inventory, and Marketings, by  
Size of Feedlot, Region, and United States 2006-2007<sup>1</sup> (continued)**

Year and State	Feedlot Capacity in Number of Head					
	32,000 - 49,999			50,000 and Over		
	Lots	Inventory	Cattle Marketed	Lots	Inventory	Cattle Marketed
	<i>Number</i>	<i>1,000 Head</i>	<i>1,000 Head</i>	<i>Number</i>	<i>1,000 Head</i>	<i>1,000 Head</i>
2006						
AZ,CA,TX	28	874	1,621	30	1,896	3,464
CO,KS,NE	37	*1,185	*2,410	18	*1,210	*2,540
Oth Sts	4	116	206	9	432	848
US	69	*2,175	*4,237	57	*3,538	*6,852
2007						
AZ,CA,TX	29	984	1,654	30	1,960	3,523
CO,KS,NE	39	1,300	2,540	18	1,180	2,485
Oth Sts	3	106	182	10	443	893
US	71	2,390	4,376	58	3,583	6,901

\* Revised.

<sup>1</sup> Number of feedlots is the number of lots operating at anytime during the year. Inventory is the number on hand January 1 of the following year.

**Cattle on Feed: Number of Feedlots, Inventory, and Marketings,  
Feedlots With Less Than 1,000 Head Capacity,  
by State, and United States 2006-2007<sup>1</sup>**

Year and State	Lots	Inventory	Cattle Marketed
	<i>Number</i>	<i>1,000 Head</i>	<i>1,000 Head</i>
2006			
IL	5,500	157	240
IN	5,700	102	150
IA	8,400	352	500
MI	3,500	132	210
MN	5,100	177	270
MO	3,200	64	90
NE	3,800	160	300
ND	1,100	33	60
OH	6,100	166	280
PA	4,600	67	120
SD	3,000	195	290
WI	8,000	228	350
Oth Sts	28,000	461.7	780
US	86,000	2,294.7	3,640
2007			
IL	4,800	109	200
IN	5,400	101	160
IA	7,500	290	440
MI	3,200	122	190
MN	5,300	201	310
MO	2,500	55	80
NE	3,800	170	300
ND	1,000	28	60
OH	6,400	166	290
PA	4,600	68	120
SD	3,000	170	290
WI	8,500	241	380
Oth Sts	29,000	498.7	880
US	85,000	2,219.7	3,700

<sup>1</sup> Number of feedlots is the number of lots operating at the end of the year. Inventory is the number on hand January 1 of the following year.

**Cattle on Feed: Number of Feedlots, Inventory, and Marketings,  
by Size of Feedlot, United States 2006-2007<sup>1</sup>**

Feedlot Capacity	2006			2007		
	Lots	Inventory	Cattle Marketed	Lots	Inventory	Cattle Marketed
	<i>No.</i>	<i>1,000 Head</i>	<i>1,000 Head</i>	<i>No.</i>	<i>1,000 Head</i>	<i>1,000 Head</i>
Less than 1,000 head	86,000	2,294.7	3,640	85,000	2,219.7	3,700
1,000 head or more	2,165	11,974	22,477	2,160	12,097	22,456
All Feedlots	88,165	14,268.7	26,117	87,160	14,316.7	26,156

<sup>1</sup> Number of feedlots with capacity less than 1,000 head is the number of lots operating at the end of the year. Number of feedlots with capacity 1,000 head or more is the number of lots operating at anytime during the year. Inventory is the number on hand January 1 of the following year.

## Terms and Definitions of Cattle on Feed Estimates

**Cattle on feed** are animals being fed a ration of grain, silage, hay and/or protein supplement for slaughter market that are expected to produce a carcass that will grade select or better. It excludes cattle being "backgrounded only" for later sale as feeders or later placement in another feedlot.

**Placements** are cattle put into a feedlot, fed a ration which will produce a carcass that will grade select or better, and are intended for the slaughter market.

**Marketings** are cattle shipped out of feedlots to a slaughter market.

**Other disappearance** includes death loss, movement from feedlots to pasture, and shipments to other feedlots for further feeding.

## Reliability of Cattle on Feed Estimates

**Survey Procedures:** During January and July all known feedlots in the U.S. with capacity of 1,000 or more head are surveyed to provide data for cattle on feed estimates. During the other months, all known feedlots from 17 States are surveyed. The 17 States account for 98 percent of the cattle on feed in feedlots with capacity of 1,000 or more head.

**Estimating Procedures:** These cattle on feed estimates were prepared by the Agricultural Statistics Board after reviewing recommendations and analysis submitted by each State office. Regional and State survey data were reviewed for reasonableness with each other and with estimates from the previous month when setting the current estimates.

**Revision Policy:** Revisions to previous estimates are made to improve month to month relationships. Estimates for the previous month are subject to revision in all States each month when current estimates are made. In February, all monthly estimates for the previous year, and the number of feedlots and annual marketings from two years ago are reviewed and subject to revisions. The reviews are primarily based on slaughter data, state check-off or brand data, and any other data that may have been received after the original estimate was made. Estimates will also be reviewed after data from the Census of Agriculture are available. No revisions will be made after that date and estimates become final.

**Reliability:** Since all 1,000+ capacity cattle on feed operators in every State are not included in the monthly survey, survey estimates are subject to sampling variability. Survey results are also subject to non-sampling errors such as omissions, duplications, and mistakes in reporting, recording, and processing the data. The effects of these errors cannot be measured directly. They are minimized through rigid quality controls in the data collection process and through a careful review of all reported data for consistency and reasonableness.

To assist users in evaluating the reliability of estimates in this report, the "**Root Mean Square Error**" is shown for selected items in the following table. The "Root Mean Square Error" is a statistical measure based on past performance and is computed using the differences between first and latest estimates. The "Root Mean Square Error" for cattle on feed inventory estimates over the past 10 years is .1 percent. This means that chances are 2 out of 3 that the final estimate will not be above or below the current estimate of 12.0 million head by more than .1 percent. Chances are 9 out of 10 that the difference will not exceed .2 percent.



The following table also shows a 10 year record of the range of differences between first and latest estimates for selected items. Using estimates of number on feed as an example, changes between the first estimate and the latest estimate during the past 10 years have averaged 7,000 head, ranging from 0 to 17,000 head. During this period the initial estimate has been below the final estimate 6 times, and above the final estimate 1 time. This does not imply that the initial estimate is likely to understate or overstate final inventory.

**Reliability of U.S. February 1 Cattle on Feed Estimates <sup>1</sup>**

Item	Root Mean Square Error	90% Confidence Level		Difference Between First and Final Estimates <sup>1</sup>			Number of Years	
		Percent	(000) Head	Average	Smallest	Largest	First Above Final	First Below Final
Number on Feed	0.1	0.2	18.7	7	0	17	1	6
Placements	0.7	1.4	24.5	8	0	46	2	5
Marketings	0.2	0.4	6.6	2	0	8	3	1

<sup>1</sup> Based on data for the past 10 years.

### Information Contacts

Listed below are the commodity specialists in the Livestock Branch of the National Agricultural Statistics Service to contact for additional information.

Dan Kerestes, Chief, Livestock Branch ..... (202) 720-3570

#### Livestock Section

Shawn Clark, Head, Livestock Section ..... (202) 720-3570  
 Bruce Boess - Hogs and Pigs ..... (202) 720-3106  
 Jim Collom - Dairy Products ..... (202) 690-3236  
 Joe Gaynor - Dairy Products Prices ..... (202) 690-2168  
 Jason Hardegree - Milk Production and Milk Cows ..... (202) 720-3278  
 Benita Hodge - Livestock Slaughter ..... (515) 284-4340  
 Scott Hollis - Sheep and Goats ..... (202) 720-4751  
 Mike Miller - Cattle, Cattle on Feed ..... (202) 720-3040

## ACCESS TO REPORTS!!

---

For your convenience, there are several ways to obtain NASS reports, data products, and services:

### INTERNET ACCESS

All NASS reports are available free of charge on the worldwide Internet. For access, connect to the Internet and go to the NASS Home Page at: [www.nass.usda.gov](http://www.nass.usda.gov).

### E-MAIL SUBSCRIPTION

All NASS reports are available by subscription free of charge direct to your e-mail address. Starting with the NASS Home Page at [www.nass.usda.gov](http://www.nass.usda.gov), under the right navigation, *Receive reports by Email*, click on **National** or **State**. Follow the instructions on the screen.

-----

### PRINTED REPORTS OR DATA PRODUCTS

**CALL OUR TOLL-FREE ORDER DESK: 800-999-6779 (U.S. and Canada)**  
**Other areas, please call 703-605-6220      FAX: 703-605-6900**  
**(Visa, MasterCard, check, or money order acceptable for payment.)**

-----

### ASSISTANCE

For **assistance** with general agricultural statistics or further information about NASS or its products or services, contact the **Agricultural Statistics Hotline** at **800-727-9540**, 7:30 a.m. to 4:00 p.m. ET, or e-mail: [nass@nass.usda.gov](mailto:nass@nass.usda.gov).

The U.S. Department of Agriculture (USDA) prohibits discrimination in all its programs and activities on the basis of race, color, national origin, age, disability, and where applicable, sex, marital status, familial status, parental status, religion, sexual orientation, genetic information, political beliefs, reprisal, or because all or a part of an individual's income is derived from any public assistance program. (Not all prohibited bases apply to all programs.) Persons with disabilities who require alternative means for communication of program information (Braille, large print, audiotape, etc.) should contact USDA's TARGET Center at (202) 720-2600 (voice and TDD).

To file a complaint of discrimination, write to USDA, Director, Office of Civil Rights, 1400 Independence Avenue, S.W., Washington, D.C. 20250-9410, or call (800) 795-3272 (voice) or (202) 720-6382 (TDD). USDA is an equal opportunity provider and employer.