



Cattle On Feed

Released March 20, 2008, by the National Agricultural Statistics Service (NASS), Agricultural Statistics Board, U.S. Department of Agriculture. For information on *Cattle on Feed* call Mike Miller at (202) 720-3040, office hours 7:30 a.m. to 4:00 p.m. ET.

U.S. Cattle on Feed Up 2 Percent

Cattle and calves on feed for slaughter market in the United States for feedlots with capacity of 1,000 or more head totaled 11.9 million head on March 1, 2008. The inventory was 2 percent above March 1, 2007 but 1 percent below March 1, 2006. This is the second highest March 1 inventory since the series began in 1996.

Placements in feedlots during February totaled 1.72 million, 4 percent above 2007 and 9 percent above 2006. Net placements were 1.66 million head. During February, placements of cattle and calves weighing less than 600 pounds were 330,000, 600-699 pounds were 385,000, 700-799 pounds were 533,000, and 800 pounds and greater were 475,000.

Marketings of fed cattle during February totaled 1.78 million, 4 percent above 2007 and 11 percent above 2006.

Other disappearance totaled 60,000 during February, 20 percent below 2007 and 18 percent below 2006.

**Cattle on Feed: Number on Feed, Placements, Marketings, and
Other Disappearance, 1,000+ Capacity Feedlots,
United States, March 1, 2006-2008**

Item	Number			2008 as % of	
	2006	2007	2008	2006	2007
	<i>1,000 Head</i>	<i>1,000 Head</i>	<i>1,000 Head</i>	<i>Percent</i>	<i>Percent</i>
On Feed Feb 1 ¹	12,110	11,726	11,966	99	102
Placed on Feed During Feb	1,588	1,659	1,723	109	104
Fed Cattle Marketed During Feb	1,602	1,711	1,776	111	104
Other Disappearance During Feb ²	73	75	60	82	80
On Feed Mar 1	12,023	11,599	11,853	99	102

¹ Cattle and calves on feed are animals for slaughter market being fed a ration of grain or other concentrates and are expected to produce a carcass that will grade select or better.

² Includes death loss, movement from feedlots to pasture, and shipments to other feedlots for further feeding.

**Cattle on Feed: Number on Feed, Placements, Marketings, and
Other Disappearance, 1,000+ Capacity Feedlots,
United States, February 1, 2006-2008**

Item	Number			2008 as % of	
	2006	2007	2008	2006	2007
	<i>1,000 Head</i>	<i>1,000 Head</i>	<i>1,000 Head</i>	<i>Percent</i>	<i>Percent</i>
On Feed Jan 1 ¹	11,804	11,974	12,097	102	101
Placed on Feed During Jan	2,199	1,690	1,787	81	106
Fed Cattle Marketed During Jan	1,810	1,841	1,858	103	101
Other Disappearance During Jan ²	83	97	60	72	62
On Feed Feb 1 ¹	12,110	11,726	11,966	99	102

¹ Cattle and calves on feed are animals for slaughter market being fed a ration of grain or other concentrates and are expected to produce a carcass that will grade select or better.

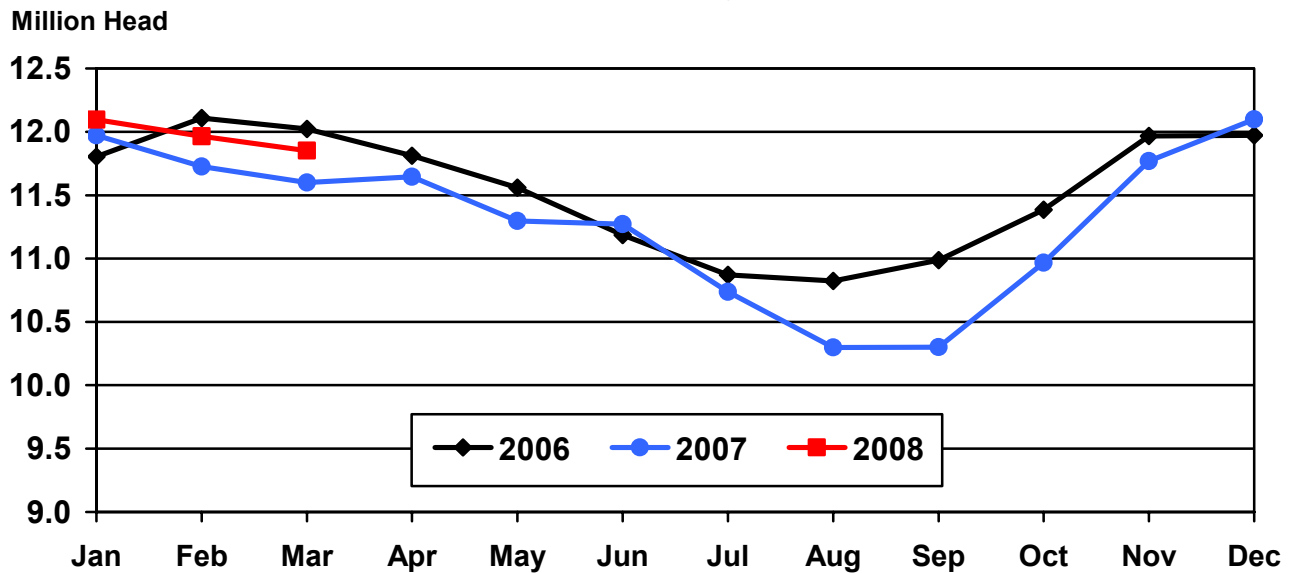
² Includes death loss, movement from feedlots to pasture, and shipments to other feedlots for further feeding.

**Cattle on Feed: Number on Feed, 1,000+ Capacity Feedlots,
by Month, State, and United States 2007-2008 ¹**

State	Mar 1, 2007	Feb 1, 2008	Mar 1, 2008		
			Number	as % of 2007	as % of Feb
	<i>1,000 Head</i>	<i>1,000 Head</i>	<i>1,000 Head</i>	<i>Percent</i>	<i>Percent</i>
AZ	329	373	377	115	101
CA	530	555	545	103	98
CO	1,010	1,090	1,050	104	96
ID	250	235	235	94	100
IA	530	570	560	106	98
KS	2,420	2,430	2,410	100	99
NE	2,510	2,510	2,490	99	99
NM	130	160	160	123	100
OK	350	355	350	100	99
SD	230	230	235	102	102
TX	2,790	2,930	2,920	105	100
WA	170	153	151	89	99
Oth Sts	350	375	370	106	99
US	11,599	11,966	11,853	102	99

¹ Cattle and calves on feed are animals for slaughter market being fed a ration of grain or other concentrates and are expected to produce a carcass that will grade select or better.

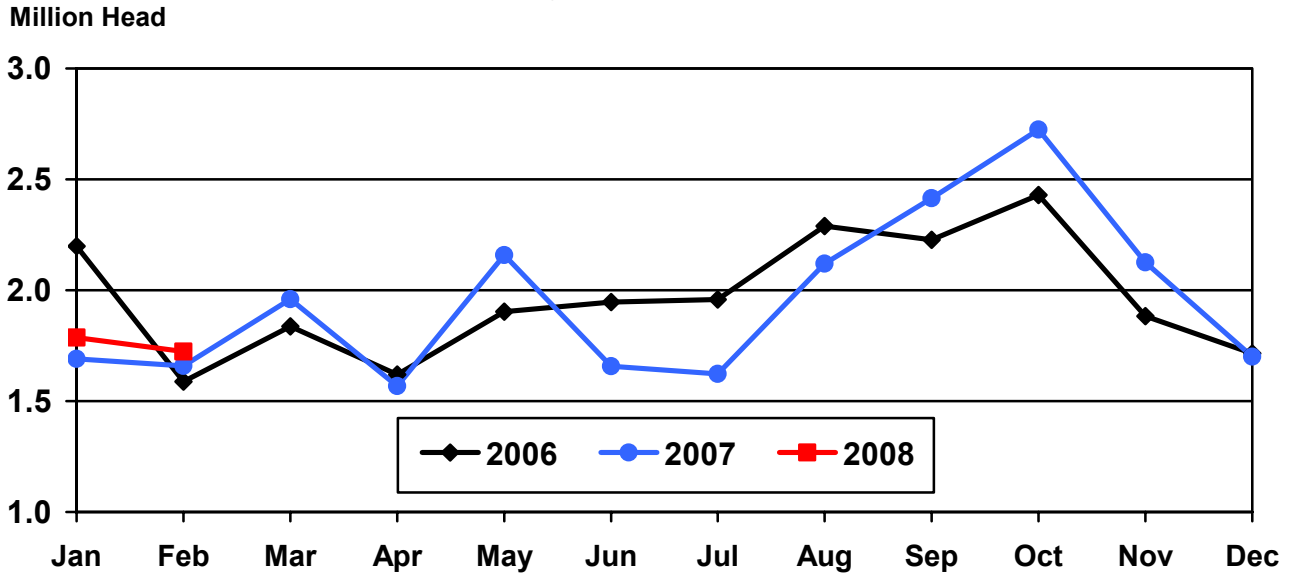
United States Cattle on Feed 1,000+ Capacity Feedlots



**Cattle on Feed: Number Placed on Feed, 1,000+ Capacity Feedlots,
by Month, State, and United States 2007-2008**

State	During Feb 2007	During Jan 2008	During Feb 2008		
			Number	as % of 2007	as % of Jan
	<i>1,000 Head</i>	<i>1,000 Head</i>	<i>1,000 Head</i>	<i>Percent</i>	<i>Percent</i>
AZ	24	35	36	150	103
CA	60	76	60	100	79
CO	140	180	155	111	86
ID	39	43	39	100	91
IA	64	72	62	97	86
KS	395	405	390	99	96
NE	360	380	350	97	92
NM	14	16	15	107	94
OK	59	54	45	76	83
SD	43	45	47	109	104
TX	390	400	440	113	110
WA	25	27	30	120	111
Oth Sts	46	54	54	117	100
US	1,659	1,787	1,723	104	96

**United States Cattle on Feed
1,000+ Capacity Feedlots Number Placed**



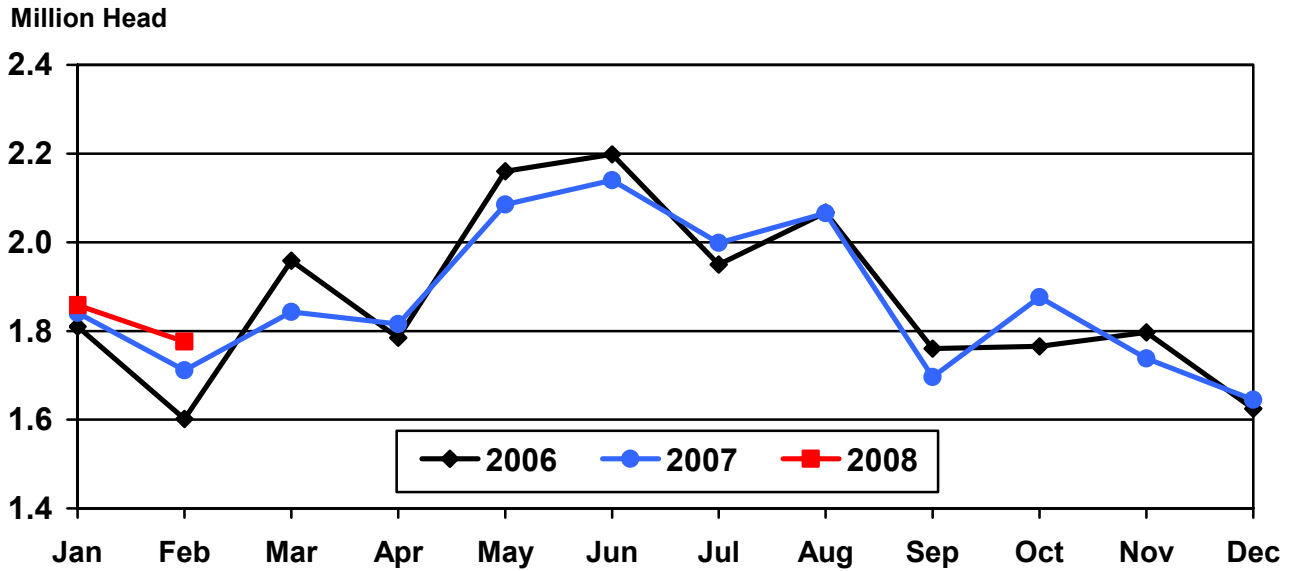
**Cattle on Feed: Number Placed on Feed by Weight Group, 1,000+ Capacity
Feedlots, by Month, State, and United States, 2007-2008**

State	During February									
	Under 600		600-699		700-799		800 Plus		Total	
	2007	2008	2007	2008	2007	2008	2007	2008	2007	2008
	<i>1,000 Head</i>	<i>1,000 Head</i>	<i>1,000 Head</i>	<i>1,000 Head</i>	<i>1,000 Head</i>	<i>1,000 Head</i>	<i>1,000 Head</i>	<i>1,000 Head</i>	<i>1,000 Head</i>	<i>1,000 Head</i>
CO	15	10	30	35	45	50	50	60	140	155
KS	50	40	85	85	145	160	115	105	395	390
NE	40	40	60	70	110	110	150	130	360	350
TX	100	120	100	125	120	125	70	70	390	440
Oth Sts	120	120	59	70	85	88	110	110	374	388
US	325	330	334	385	505	533	495	475	1,659	1,723
State	During January									
	Under 600		600-699		700-799		800 Plus		Total	
	2007	2008	2007	2008	2007	2008	2007	2008	2007	2008
	<i>1,000 Head</i>	<i>1,000 Head</i>	<i>1,000 Head</i>	<i>1,000 Head</i>	<i>1,000 Head</i>	<i>1,000 Head</i>	<i>1,000 Head</i>	<i>1,000 Head</i>	<i>1,000 Head</i>	<i>1,000 Head</i>
CO	15	20	35	45	55	55	50	60	155	180
KS	50	55	110	120	125	140	80	90	365	405
NE	45	50	85	90	150	125	140	115	420	380
TX	85	135	85	125	120	110	50	30	340	400
Oth Sts	125	140	75	87	95	95	115	100	410	422
US	320	400	390	467	545	525	435	395	1,690	1,787

**Cattle on Feed: Number Marketed, 1,000+ Capacity Feedlots,
by Month, State, and United States 2007-2008**

State	During Feb 2007	During Jan 2008	During Feb 2008		
			Number	as % of 2007	as % of Jan
	<i>1,000 Head</i>	<i>1,000 Head</i>	<i>1,000 Head</i>	<i>Percent</i>	<i>Percent</i>
AZ	28	29	30	107	103
CA	67	72	63	94	88
CO	160	185	190	119	103
ID	43	42	38	88	90
IA	63	69	69	110	100
KS	380	445	400	105	90
NE	380	390	360	95	92
NM	18	15	14	78	93
OK	58	47	48	83	102
SD	41	43	40	98	93
TX	385	420	440	114	105
WA	31	36	30	97	83
Oth Sts	57	65	54	95	83
US	1,711	1,858	1,776	104	96

United States Cattle on Feed 1,000+ Capacity Feedlots Number Marketed



**Cattle on Feed: Other Disappearance, 1,000+ Capacity Feedlots,
by Month, State, and United States 2007-2008 ¹**

State	During Feb 2007	During Jan 2008	During Feb 2008		
			Number	as % of 2007	as % of Jan
	<i>1,000 Head</i>	<i>1,000 Head</i>	<i>1,000 Head</i>	<i>Percent</i>	<i>Percent</i>
AZ	1	1	2	200	200
CA	3	9	7	233	78
CO	10	5	5	50	100
ID	1	1	1	100	100
IA	1	3	3	300	100
KS	25	10	10	40	100
NE	10	10	10	100	100
NM	1	1	1	100	100
OK	1	2	2	200	100
SD	2	2	2	100	100
TX	15	10	10	67	100
WA	1	2	2	200	100
Oth Sts	4	4	5	125	125
US	75	60	60	80	100

¹ Includes death loss, movement from feedlots to pasture, and shipments to other feedlots for further feeding.

Terms and Definitions of Cattle on Feed Estimates

Cattle on feed are animals being fed a ration of grain, silage, hay and/or protein supplement for slaughter market that are expected to produce a carcass that will grade select or better. It excludes cattle being "backgrounded only" for later sale as feeders or later placement in another feedlot.

Placements are cattle put into a feedlot, fed a ration which will produce a carcass that will grade select or better, and are intended for the slaughter market.

Marketings are cattle shipped out of feedlots to a slaughter market.

Other disappearance includes death loss, movement from feedlots to pasture, and shipments to other feedlots for further feeding.

Reliability of Cattle on Feed Estimates

Survey Procedures: During January and July all known feedlots in the U.S. with capacity of 1,000 or more head are surveyed to provide data for cattle on feed estimates. During the other months, all known feedlots from 17 States are surveyed. The 17 States account for 98 percent of the cattle on feed in feedlots with capacity of 1,000 or more head.

Estimating Procedures: These cattle on feed estimates were prepared by the Agricultural Statistics Board after reviewing recommendations and analysis submitted by each State office. Regional and State survey data were reviewed for reasonableness with each other and with estimates from the previous month when setting the current estimates.

Revision Policy: Revisions to previous estimates are made to improve month to month relationships. Estimates for the previous month are subject to revision in all States each month when current estimates are made. In February, all monthly estimates for the previous year, and the number of feedlots and annual marketings from two years ago are reviewed and subject to revisions. The reviews are primarily based on slaughter data, state check-off or brand data, and any other data that may have been received after the original estimate was made. Estimates will also be reviewed after data from the Census of Agriculture are available. No revisions will be made after that date and estimates become final.

Reliability: Since all 1,000+ capacity cattle on feed operators in every State are not included in the monthly survey, survey estimates are subject to sampling variability. Survey results are also subject to non-sampling errors such as omissions, duplications, and mistakes in reporting, recording, and processing the data. The effects of these errors cannot be measured directly. They are minimized through rigid quality controls in the data collection process and through a careful review of all reported data for consistency and reasonableness.

To assist users in evaluating the reliability of estimates in this report, the "**Root Mean Square Error**" is shown for selected items in the following table. The "Root Mean Square Error" is a statistical measure based on past performance and is computed using the differences between first and latest estimates. The "Root Mean Square Error" for cattle on feed inventory estimates over the past 10 years is .1 percent. This means that chances are 2 out of 3 that the final estimate will not be

above or below the current estimate of 11.9 million head by more than .1 percent. Chances are 9 out of 10 that the difference will not exceed .2 percent.

The following table also shows a 10 year record of the range of differences between first and latest estimates for selected items. Using estimates of number on feed as an example, changes between the first estimate and the latest estimate during the past 10 years have averaged 7,000 head, ranging from 0 to 25,000 head. During this period the initial estimate has been below the final estimate 5 times, and above the final estimate 0 times. This does not imply that the initial estimate is likely to understate or overstate final inventory.

Reliability of U.S. March 1 Cattle on Feed Estimates ¹

Item	Root Mean Square Error	90% Confidence Level		Difference Between First and Final Estimates ¹			Number of Years	
		Percent	(000) Head	Average	Smallest	Largest	First Above Final	First Below Final
	<i>Percent</i>	<i>Percent</i>	<i>1,000 Head</i>	<i>1,000 Head</i>	<i>1,000 Head</i>	<i>1,000 Head</i>	<i>Number</i>	<i>Number</i>
Number on Feed	0.1	0.2	23.1	7	0	25	0	5
Placements	1.0	1.9	32.2	10	0	42	2	4
Marketings	0.8	1.4	24.6	8	0	40	1	5

¹ Based on data for the past 10 years.

Information Contacts

Listed below are the commodity specialists in the Livestock Branch of the National Agricultural Statistics Service to contact for additional information.

Dan Kerestes, Chief, Livestock Branch (202) 720-3570

Livestock Section

Scott Hollis, Head, Livestock Section (202) 690-2424
 Bruce Boess - Hogs and Pigs (202) 720-3106
 Jim Collom - Dairy Products (202) 690-3236
 Joe Gaynor - Dairy Products Prices (202) 690-2168
 Jason Hardegree - Milk Production and Milk Cows (202) 720-3278
 Benita Hodge - Livestock Slaughter (515) 284-4340
 Scott Hollis - Sheep and Goats (202) 690-2424
 Mike Miller - Cattle, Cattle on Feed (202) 720-3040

ACCESS TO REPORTS!!

For your convenience, there are several ways to obtain NASS reports, data products, and services:

INTERNET ACCESS

All NASS reports are available free of charge on the worldwide Internet. For access, connect to the Internet and go to the NASS Home Page at: **www.nass.usda.gov**.

E-MAIL SUBSCRIPTION

All NASS reports are available by subscription free of charge direct to your e-mail address. Starting with the NASS Home Page at **www.nass.usda.gov**, under the right navigation, *Receive reports by Email*, click on **National** or **State**. Follow the instructions on the screen.

PRINTED REPORTS OR DATA PRODUCTS

CALL OUR TOLL-FREE ORDER DESK: 800-999-6779 (U.S. and Canada)
Other areas, please call 703-605-6220 FAX: 703-605-6900
(Visa, MasterCard, check, or money order acceptable for payment.)

ASSISTANCE

For **assistance** with general agricultural statistics or further information about NASS or its products or services, contact the **Agricultural Statistics Hotline** at **800-727-9540**, 7:30 a.m. to 4:00 p.m. ET, or e-mail: **nass@nass.usda.gov**.

The U.S. Department of Agriculture (USDA) prohibits discrimination in all its programs and activities on the basis of race, color, national origin, age, disability, and where applicable, sex, marital status, familial status, parental status, religion, sexual orientation, genetic information, political beliefs, reprisal, or because all or a part of an individual's income is derived from any public assistance program. (Not all prohibited bases apply to all programs.) Persons with disabilities who require alternative means for communication of program information (Braille, large print, audiotape, etc.) should contact USDA's TARGET Center at (202) 720-2600 (voice and TDD).

To file a complaint of discrimination, write to USDA, Director, Office of Civil Rights, 1400 Independence Avenue, S.W., Washington, D.C. 20250-9410, or call (800) 795-3272 (voice) or (202) 720-6382 (TDD). USDA is an equal opportunity provider and employer.