



Cattle On Feed

Released April 18, 2008, by the National Agricultural Statistics Service (NASS), Agricultural Statistics Board, U.S. Department of Agriculture. For information on *Cattle on Feed* call Mike Miller at (202) 720-3040, office hours 7:30 a.m. to 4:00 p.m. ET.

U.S. Cattle on Feed Up Slightly

Cattle and calves on feed for slaughter market in the United States for feedlots with capacity of 1,000 or more head totaled 11.7 million head on April 1, 2008. The inventory was slightly above April 1, 2007 but 1 percent below April 1, 2006. This is the second highest April 1 inventory since the series began in 1996. The inventory included 7.35 million steers and steer calves, down 1 percent from the previous year. This group accounted for 63 percent of the total inventory. Heifers and heifer calves accounted for 4.28 million head, up 3 percent from 2007.

Placements in feedlots during March totaled 1.74 million, 11 percent below 2007 and 5 percent below 2006. Net placements were 1.67 million head. This is the second lowest placements for the month of March since the series began in 1996. During March, placements of cattle and calves weighing less than 600 pounds were 335,000, 600-699 pounds were 330,000, 700-799 pounds were 561,000 and 800 pounds and greater were 510,000.

Marketings of fed cattle during March totaled 1.84 million, slightly below 2007 and 6 percent below 2006.

Other disappearance totaled 63,000 during March, 12 percent below 2007 and 30 percent below 2006.

**Cattle on Feed: Number on Feed, Placements, Marketings, and
Other Disappearance, 1,000+ Capacity Feedlots,
United States, April 1, 2006-2008**

Item	Number			2008 as % of	
	2006	2007	2008	2006	2007
	<i>1,000 Head</i>	<i>1,000 Head</i>	<i>1,000 Head</i>	<i>Percent</i>	<i>Percent</i>
On Feed Mar 1 ¹	12,023	11,599	11,853	99	102
Placed on Feed During Mar	1,837	1,960	1,736	95	89
Fed Cattle Marketed During Mar	1,958	1,843	1,842	94	100
Other Disappearance During Mar ²	90	72	63	70	88
On Feed Apr 1	11,812	11,644	11,684	99	100

¹ Cattle and calves on feed are animals for slaughter market being fed a ration of grain or other concentrates and are expected to produce a carcass that will grade select or better.

² Includes death loss, movement from feedlots to pasture, and shipments to other feedlots for further feeding.

**Cattle on Feed: Number on Feed, Placements, Marketings, and
Other Disappearance, 1,000+ Capacity Feedlots,
United States, March 1, 2006-2008**

Item	Number			2008 as % of	
	2006	2007	2008	2006	2007
	<i>1,000 Head</i>	<i>1,000 Head</i>	<i>1,000 Head</i>	<i>Percent</i>	<i>Percent</i>
On Feed Feb 1 ¹	12,110	11,726	11,966	99	102
Placed on Feed During Feb	1,588	1,659	1,723	109	104
Fed Cattle Marketed During Feb	1,602	1,711	1,776	111	104
Other Disappearance During Feb ²	73	75	60	82	80
On Feed Mar 1 ¹	12,023	11,599	11,853	99	102

¹ Cattle and calves on feed are animals for slaughter market being fed a ration of grain or other concentrates and are expected to produce a carcass that will grade select or better.

² Includes death loss, movement from feedlots to pasture, and shipments to other feedlots for further feeding.

**Cattle on Feed: Number on Feed by Class, 1,000+ Capacity Feedlots,
United States, April 1, 2006-2008**

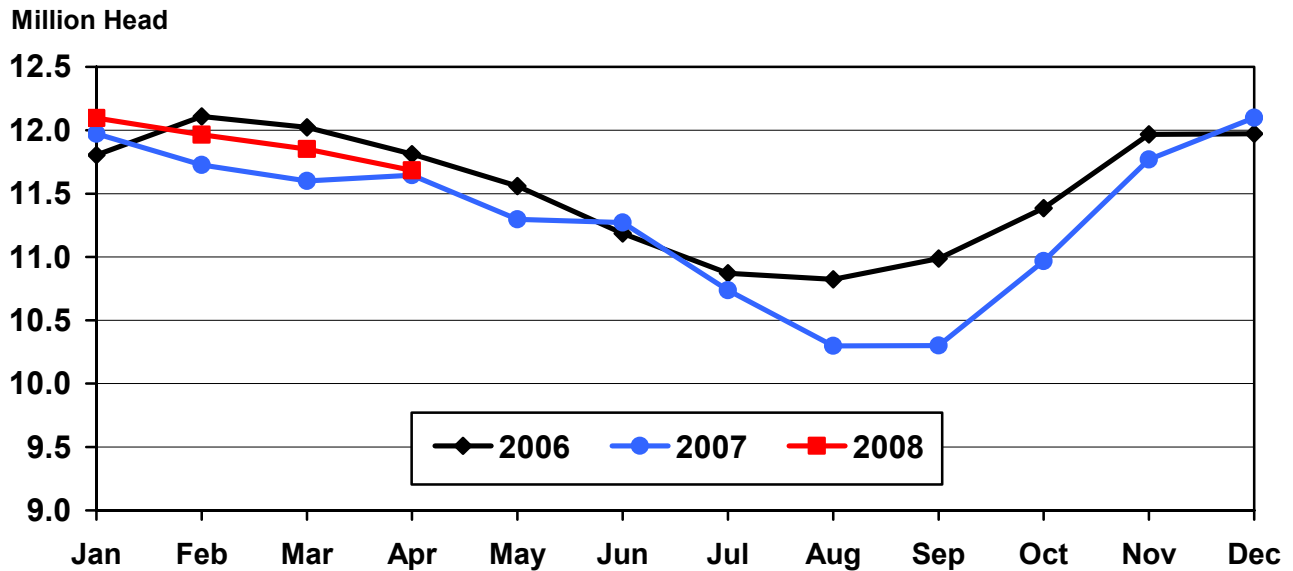
Item	Number			2008 as % of	
	2006	2007	2008	2006	2007
	<i>1,000 Head</i>	<i>1,000 Head</i>	<i>1,000 Head</i>	<i>Percent</i>	<i>Percent</i>
Class on Feed Apr 1					
Steers and Steer Calves	7,740	7,433	7,347	95	99
Heifers and Heifer Calves	3,997	4,142	4,276	107	103
Cows and Bulls	75	69	61	81	88

**Cattle on Feed: Number on Feed, 1,000+ Capacity Feedlots,
by Month, State, and United States 2007-2008¹**

State	Apr 1, 2007	Mar 1, 2008	Apr 1, 2008		
			Number	as % of 2007	as % of Mar
	<i>1,000 Head</i>	<i>1,000 Head</i>	<i>1,000 Head</i>	<i>Percent</i>	<i>Percent</i>
AZ	340	377	374	110	99
CA	530	545	530	100	97
CO	1,020	1,050	1,020	100	97
ID	245	235	230	94	98
IA	530	560	550	104	98
KS	2,480	2,410	2,420	98	100
NE	2,480	2,490	2,450	99	98
NM	131	160	158	121	99
OK	350	350	340	97	97
SD	230	235	225	98	96
TX	2,800	2,920	2,880	103	99
WA	163	151	152	93	101
Oth Sts	345	370	355	103	96
US	11,644	11,853	11,684	100	99

¹ Cattle and calves on feed are animals for slaughter market being fed a ration of grain or other concentrates and are expected to produce a carcass that will grade select or better.

**United States Cattle on Feed
1,000+ Capacity Feedlots**

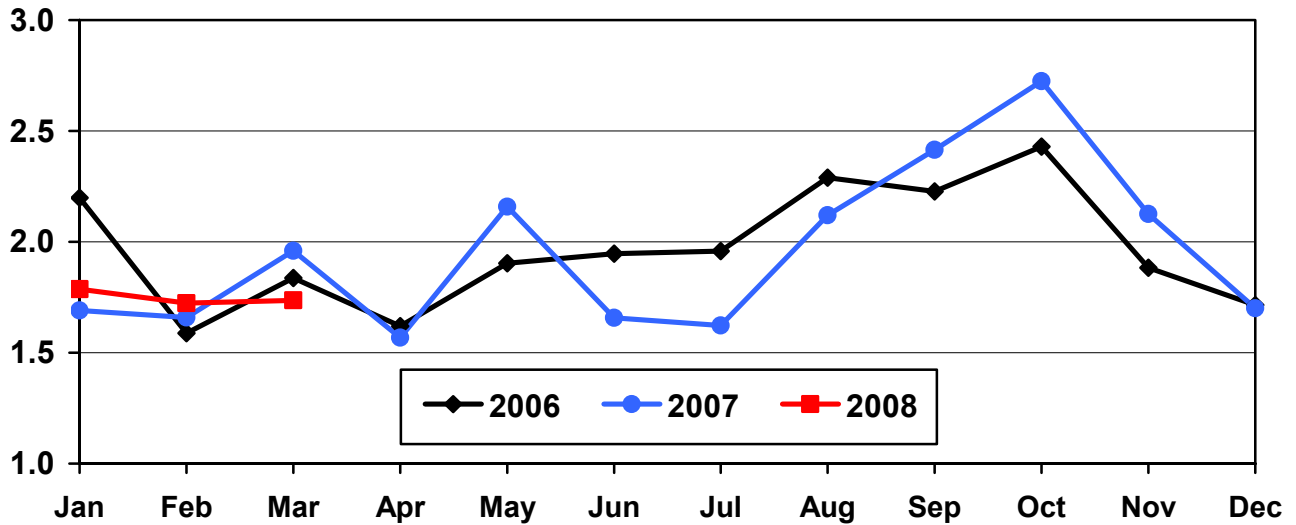


**Cattle on Feed: Number Placed on Feed, 1,000+ Capacity Feedlots,
by Month, State, and United States 2007-2008**

State	During Mar 2007	During Feb 2008	During Mar 2008		
			Number	as % of 2007	as % of Feb
	<i>1,000 Head</i>	<i>1,000 Head</i>	<i>1,000 Head</i>	<i>Percent</i>	<i>Percent</i>
AZ	46	36	30	65	83
CA	68	60	55	81	92
CO	160	155	135	84	87
ID	38	39	37	97	95
IA	72	62	59	82	95
KS	510	390	440	86	113
NE	350	350	360	103	103
NM	19	15	10	53	67
OK	68	45	50	74	111
SD	40	47	32	80	68
TX	520	440	450	87	102
WA	26	30	30	115	100
Oth Sts	43	54	48	112	89
US	1,960	1,723	1,736	89	101

**United States Cattle on Feed
1,000+ Capacity Feedlots Number Placed**

Million Head



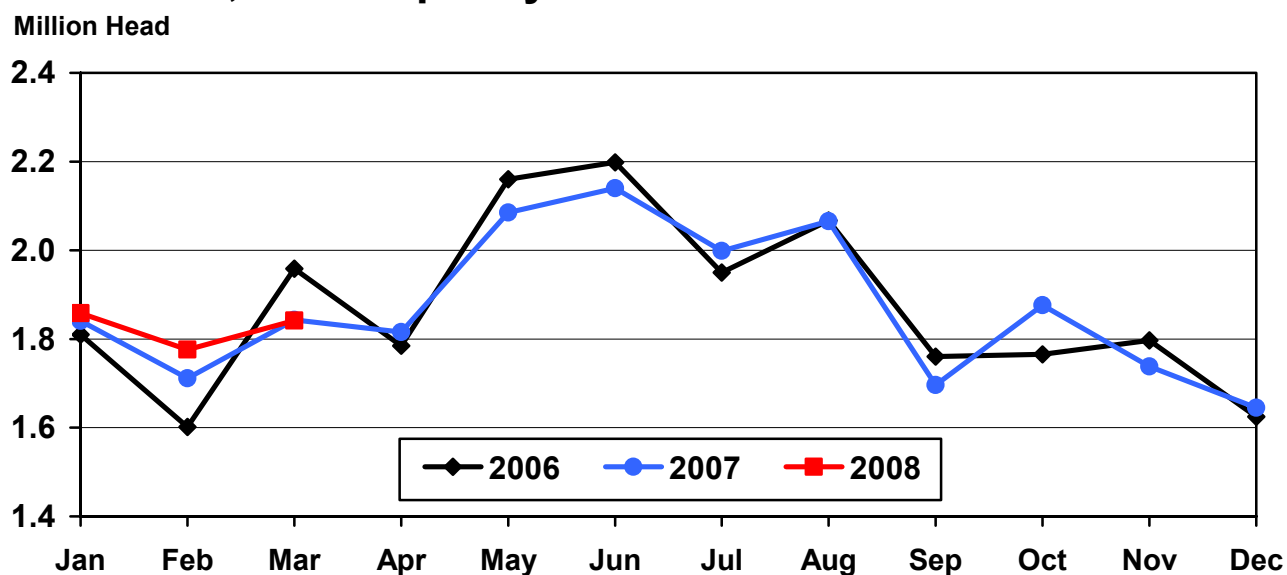
**Cattle on Feed: Number Placed on Feed by Weight Group, 1,000+ Capacity
Feedlots, by Month, State, and United States, 2007-2008**

State	During March									
	Under 600		600-699		700-799		800 Plus		Total	
	2007	2008	2007	2008	2007	2008	2007	2008	2007	2008
	<i>1,000 Head</i>	<i>1,000 Head</i>	<i>1,000 Head</i>	<i>1,000 Head</i>	<i>1,000 Head</i>	<i>1,000 Head</i>	<i>1,000 Head</i>	<i>1,000 Head</i>	<i>1,000 Head</i>	<i>1,000 Head</i>
CO	15	20	30	25	50	45	65	45	160	135
KS	70	55	115	95	170	150	155	140	510	440
NE	40	50	50	50	110	110	150	150	350	360
TX	90	100	120	105	200	165	110	80	520	450
Oth Sts	130	110	60	55	110	91	120	95	420	351
US	345	335	375	330	640	561	600	510	1,960	1,736
	During February									
	Under 600		600-699		700-799		800 Plus		Total	
	2007	2008	2007	2008	2007	2008	2007	2008	2007	2008
	<i>1,000 Head</i>	<i>1,000 Head</i>	<i>1,000 Head</i>	<i>1,000 Head</i>	<i>1,000 Head</i>	<i>1,000 Head</i>	<i>1,000 Head</i>	<i>1,000 Head</i>	<i>1,000 Head</i>	<i>1,000 Head</i>
CO	15	10	30	35	45	50	50	60	140	155
KS	50	40	85	85	145	160	115	105	395	390
NE	40	40	60	70	110	110	150	130	360	350
TX	100	120	100	125	120	125	70	70	390	440
Oth Sts	120	120	59	70	85	88	110	110	374	388
US	325	330	334	385	505	533	495	475	1,659	1,723

**Cattle on Feed: Number Marketed, 1,000+ Capacity Feedlots,
by Month, State, and United States 2007-2008**

State	During Mar 2007	During Feb 2008	During Mar 2008		
			Number	as % of 2007	as % of Feb
	<i>1,000 Head</i>	<i>1,000 Head</i>	<i>1,000 Head</i>	<i>Percent</i>	<i>Percent</i>
AZ	33	30	31	94	103
CA	65	63	65	100	103
CO	140	190	160	114	84
ID	42	38	39	93	103
IA	70	69	68	97	99
KS	430	400	415	97	104
NE	370	360	390	105	108
NM	17	14	11	65	79
OK	67	48	58	87	121
SD	37	40	37	100	93
TX	495	440	480	97	109
WA	32	30	28	88	93
Oth Sts	45	54	60	133	111
US	1,843	1,776	1,842	100	104

United States Cattle on Feed 1,000+ Capacity Feedlots Number Marketed



**Cattle on Feed: Other Disappearance, 1,000+ Capacity Feedlots,
by Month, State, and United States 2007-2008 ¹**

State	During Mar 2007	During Feb 2008	During Mar 2008		
			Number	as % of 2007	as % of Feb
	<i>1,000 Head</i>	<i>1,000 Head</i>	<i>1,000 Head</i>	<i>Percent</i>	<i>Percent</i>
AZ	2	2	2	100	100
CA	3	7	5	167	71
CO	10	5	5	50	100
ID	1	1	3	300	300
IA	2	3	1	50	33
KS	20	10	15	75	150
NE	10	10	10	100	100
NM	1	1	1	100	100
OK	1	2	2	200	100
SD	3	2	5	167	250
TX	15	10	10	67	100
WA	1	2	1	100	50
Oth Sts	3	5	3	100	60
US	72	60	63	88	105

¹ Includes death loss, movement from feedlots to pasture, and shipments to other feedlots for further feeding.

**Cattle on Feed: Number on Feed by Class, 1,000+ Capacity Feedlots,
by Quarter, State, and United States, 2007-2008**

State	Steers & Steer Calves			Heifers & Heifer Calves			Cows and Bulls		
	Apr 1, 2007	Jan 1, 2008	Apr 1, 2008	Apr 1, 2007	Jan 1, 2008	Apr 1, 2008	Apr 1, 2007	Jan 1, 2008	Apr 1, 2008
	<i>1,000 Head</i>	<i>1,000 Head</i>	<i>1,000 Head</i>	<i>1,000 Head</i>	<i>1,000 Head</i>	<i>1,000 Head</i>	<i>1,000 Head</i>	<i>1,000 Head</i>	<i>1,000 Head</i>
AZ	339	365	371	1	3	3	0	0	0
CA	485	500	485	45	60	45	0	0	0
CO	660	670	600	355	425	415	5	5	5
ID	146	127	132	96	98	96	3	10	2
IA	350	390	380	179	179	170	1	1	0
KS	1,340	1,350	1,270	1,115	1,120	1,130	25	10	20
NE	1,520	1,550	1,550	950	970	890	10	10	10
NM	81	90	94	50	70	64	0	0	0
OK	235	240	220	115	110	120	0	0	0
SD	130	111	121	82	90	86	18	29	18
TX	1,780	1,880	1,790	1,017	1,077	1,087	3	3	3
WA	87	88	74	75	75	77	1	1	1
Oth Sts	280	285	260	62	104	93	3	1	2
US	7,433	7,646	7,347	4,142	4,381	4,276	69	70	61

Terms and Definitions of Cattle on Feed Estimates

Cattle on feed are animals being fed a ration of grain, silage, hay and/or protein supplement for slaughter market that are expected to produce a carcass that will grade select or better. It excludes cattle being "backgrounded only" for later sale as feeders or later placement in another feedlot.

Placements are cattle put into a feedlot, fed a ration which will produce a carcass that will grade select or better, and are intended for the slaughter market.

Marketings are cattle shipped out of feedlots to a slaughter market.

Other disappearance includes death loss, movement from feedlots to pasture, and shipments to other feedlots for further feeding.

Reliability of Cattle on Feed Estimates

Survey Procedures: During January and July all known feedlots in the U.S. with capacity of 1,000 or more head are surveyed to provide data for cattle on feed estimates. During the other months, all known feedlots from 17 States are surveyed. The 17 States account for 98 percent of the cattle on feed in feedlots with capacity of 1,000 or more head.

Estimating Procedures: These cattle on feed estimates were prepared by the Agricultural Statistics Board after reviewing recommendations and analysis submitted by each State office. Regional and State survey data were reviewed for reasonableness with each other and with estimates from the previous month when setting the current estimates.

Revision Policy: Revisions to previous estimates are made to improve month to month relationships. Estimates for the previous month are subject to revision in all States each month when current estimates are made. In February, all monthly estimates for the previous year, and the number of feedlots and annual marketings from two years ago are reviewed and subject to revisions. The reviews are primarily based on slaughter data, state check-off or brand data, and any other data that may have been received after the original estimate was made. Estimates will also be reviewed after data from the Census of Agriculture are available. No revisions will be made after that date and estimates become final.

Reliability: Since all 1,000+ capacity cattle on feed operators in every State are not included in the monthly survey, survey estimates are subject to sampling variability. Survey results are also subject to non-sampling errors such as omissions, duplications, and mistakes in reporting, recording, and processing the data. The effects of these errors cannot be measured directly. They are minimized through rigid quality controls in the data collection process and through a careful review of all reported data for consistency and reasonableness.

To assist users in evaluating the reliability of estimates in this report, the "**Root Mean Square Error**" is shown for selected items in the following table. The "Root Mean Square Error" is a statistical measure based on past performance and is computed using the differences between first and latest estimates. The "Root Mean Square Error" for cattle on feed inventory estimates over the past 10 years is .1 percent. This means that chances are 2 out of 3 that the final estimate will not be

above or below the current estimate of 11.7 million head by more than .1 percent. Chances are 9 out of 10 that the difference will not exceed .1 percent.

The following table also shows a 10 year record of the range of differences between first and latest estimates for selected items. Using estimates of number on feed as an example, changes between the first estimate and the latest estimate during the past 10 years have averaged 7,000 head, ranging from 0 to 15,000 head. During this period the initial estimate has been below the final estimate 7 times, and above the final estimate 0 times. This does not imply that the initial estimate is likely to understate or overstate final inventory.

Reliability of U.S. April 1 Cattle on Feed Estimates ¹

Item	Root Mean Square Error	90% Confidence Level		Difference Between First and Final Estimates ¹			Number of Years	
		Percent	(000) Head	Average	Smallest	Largest	First Above Final	First Below Final
	<i>Percent</i>	<i>Percent</i>	<i>1,000 Head</i>	<i>1,000 Head</i>	<i>1,000 Head</i>	<i>1,000 Head</i>	<i>Number</i>	<i>Number</i>
Number on Feed	0.1	0.1	17.3	7	0	15	0	7
Placements	0.5	0.8	14.5	8	0	15	4	5
Marketings	0.3	0.5	10.0	4	0	10	3	4

¹ Based on data for the past 10 years.

Information Contacts

Listed below are the commodity specialists in the Livestock Branch of the National Agricultural Statistics Service to contact for additional information.

Dan Kerestes, Chief, Livestock Branch (202) 720-3570

Livestock Section

Scott Hollis, Head, Livestock Section (202) 690-2424
 Jim Collom - Dairy Products (202) 690-3236
 Joe Gaynor - Dairy Products Prices (202) 690-2168
 Jason Hardegree - Milk Production and Milk Cows (202) 720-3278
 Benita Hodge - Livestock Slaughter (515) 284-4340
 Scott Hollis - Sheep and Goats (202) 690-2424
 Mike Miller - Cattle, Cattle on Feed (202) 720-3040
 Nicholas Streff - Hogs and Pigs (202) 720-3106

ACCESS TO REPORTS!!

For your convenience, there are several ways to obtain NASS reports, data products, and services:

INTERNET ACCESS

All NASS reports are available free of charge on the worldwide Internet. For access, connect to the Internet and go to the NASS Home Page at: www.nass.usda.gov.

E-MAIL SUBSCRIPTION

All NASS reports are available by subscription free of charge direct to your e-mail address. Starting with the NASS Home Page at www.nass.usda.gov, under the right navigation, *Receive reports by Email*, click on **National** or **State**. Follow the instructions on the screen.

PRINTED REPORTS OR DATA PRODUCTS

CALL OUR TOLL-FREE ORDER DESK: 800-999-6779 (U.S. and Canada)
Other areas, please call 703-605-6220 FAX: 703-605-6900
(Visa, MasterCard, check, or money order acceptable for payment.)

ASSISTANCE

For **assistance** with general agricultural statistics or further information about NASS or its products or services, contact the **Agricultural Statistics Hotline** at **800-727-9540**, 7:30 a.m. to 4:00 p.m. ET, or e-mail: nass@nass.usda.gov.

The U.S. Department of Agriculture (USDA) prohibits discrimination in all its programs and activities on the basis of race, color, national origin, age, disability, and where applicable, sex, marital status, familial status, parental status, religion, sexual orientation, genetic information, political beliefs, reprisal, or because all or a part of an individual's income is derived from any public assistance program. (Not all prohibited bases apply to all programs.) Persons with disabilities who require alternative means for communication of program information (Braille, large print, audiotape, etc.) should contact USDA's TARGET Center at (202) 720-2600 (voice and TDD).

To file a complaint of discrimination, write to USDA, Director, Office of Civil Rights, 1400 Independence Avenue, S.W., Washington, D.C. 20250-9410, or call (800) 795-3272 (voice) or (202) 720-6382 (TDD). USDA is an equal opportunity provider and employer.