



Cattle On Feed

Released May 16, 2008, by the National Agricultural Statistics Service (NASS), Agricultural Statistics Board, U.S. Department of Agriculture. For information on *Cattle on Feed* call Jason Hardegree at (202) 720-3040, office hours 7:30 a.m. to 4:00 p.m. ET.

U.S. Cattle on Feed Down 1 Percent

Cattle and calves on feed for slaughter market in the United States for feedlots with capacity of 1,000 or more head totaled 11.1 million head on May 1, 2008. The inventory was 1 percent below May 1, 2007 and 4 percent below May 1, 2006.

Placements in feedlots during April totaled 1.54 million, 2 percent below 2007 and 5 percent below 2006. Net placements were 1.46 million head. During April, placements of cattle and calves weighing less than 600 pounds were 315,000, 600-699 pounds were 278,000, 700-799 pounds were 428,000, and 800 pounds and greater were 515,000.

Marketings of fed cattle during April totaled 2.01 million, 11 percent above 2007 and 13 percent above 2006. This is the highest fed cattle marketings for the month of April since the series began in 1996.

Other disappearance totaled 75,000 during April, 24 percent below 2007 and 14 percent below 2006.

**Cattle on Feed: Number on Feed, Placements, Marketings, and
Other Disappearance, 1,000+ Capacity Feedlots,
United States, May 1, 2006-2008**

Item	Number			2008 as % of	
	2006	2007	2008	2006	2007
	<i>1,000 Head</i>	<i>1,000 Head</i>	<i>1,000 Head</i>	<i>Percent</i>	<i>Percent</i>
On Feed Apr 1 ¹	11,812	11,644	11,684	99	100
Placed on Feed During Apr	1,619	1,568	1,536	95	98
Fed Cattle Marketed During Apr	1,785	1,816	2,010	113	111
Other Disappearance During Apr ²	87	99	75	86	76
On Feed May 1	11,559	11,297	11,135	96	99

¹ Cattle and calves on feed are animals for slaughter market being fed a ration of grain or other concentrates and are expected to produce a carcass that will grade select or better.

² Includes death loss, movement from feedlots to pasture, and shipments to other feedlots for further feeding.

**Cattle on Feed: Number on Feed, Placements, Marketings, and
Other Disappearance, 1,000+ Capacity Feedlots,
United States, April 1, 2006-2008**

Item	Number			2008 as % of	
	2006	2007	2008	2006	2007
	<i>1,000 Head</i>	<i>1,000 Head</i>	<i>1,000 Head</i>	<i>Percent</i>	<i>Percent</i>
On Feed Mar 1 ¹	12,023	11,599	11,853	99	102
Placed on Feed During Mar	1,837	1,960	1,736	95	89
Fed Cattle Marketed During Mar	1,958	1,843	1,842	94	100
Other Disappearance During Mar ²	90	72	63	70	88
On Feed Apr 1 ¹	11,812	11,644	11,684	99	100

¹ Cattle and calves on feed are animals for slaughter market being fed a ration of grain or other concentrates and are expected to produce a carcass that will grade select or better.

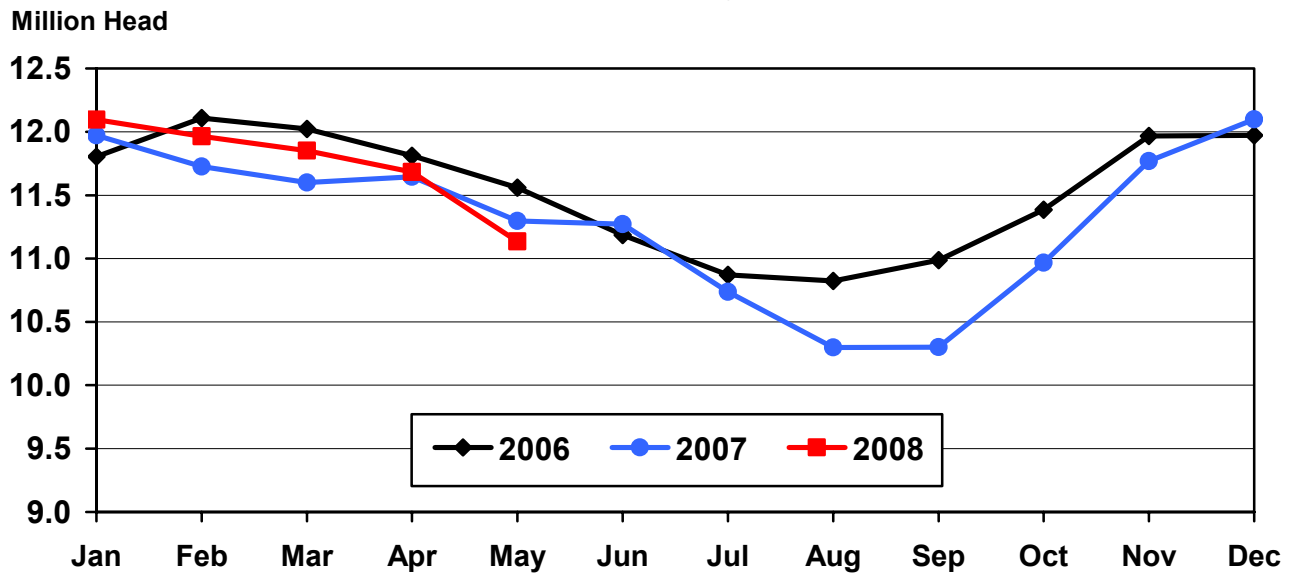
² Includes death loss, movement from feedlots to pasture, and shipments to other feedlots for further feeding.

**Cattle on Feed: Number on Feed, 1,000+ Capacity Feedlots,
by Month, State, and United States 2007-2008 ¹**

State	May 1, 2007	Apr 1, 2008	May 1, 2008		
			Number	as % of 2007	as % of Apr
	<i>1,000 Head</i>	<i>1,000 Head</i>	<i>1,000 Head</i>	<i>Percent</i>	<i>Percent</i>
AZ	340	374	370	109	99
CA	550	530	520	95	98
CO	1,020	1,020	950	93	93
ID	235	230	225	96	98
IA	530	550	530	100	96
KS	2,350	2,420	2,290	97	95
NE	2,420	2,450	2,380	98	97
NM	118	158	150	127	95
OK	335	340	305	91	90
SD	230	225	220	96	98
TX	2,680	2,880	2,690	100	93
WA	154	152	155	101	102
Oth Sts	335	355	350	104	99
US	11,297	11,684	11,135	99	95

¹ Cattle and calves on feed are animals for slaughter market being fed a ration of grain or other concentrates and are expected to produce a carcass that will grade select or better.

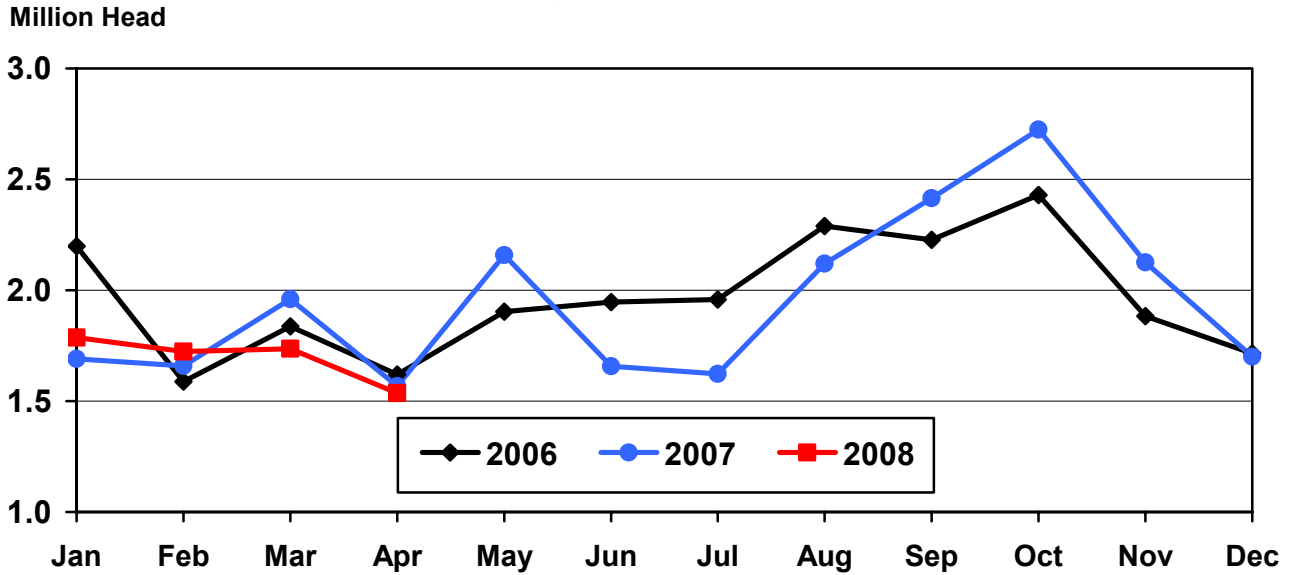
**United States Cattle on Feed
1,000+ Capacity Feedlots**



**Cattle on Feed: Number Placed on Feed, 1,000+ Capacity Feedlots,
by Month, State, and United States 2007-2008**

State	During Apr 2007	During Mar 2008	During Apr 2008		
			Number	as % of 2007	as % of Mar
	<i>1,000 Head</i>	<i>1,000 Head</i>	<i>1,000 Head</i>	<i>Percent</i>	<i>Percent</i>
AZ	31	30	34	110	113
CA	85	55	64	75	116
CO	150	135	115	77	85
ID	35	37	28	80	76
IA	61	59	59	97	100
KS	355	440	360	101	82
NE	290	360	340	117	94
NM	12	10	9	75	90
OK	54	50	40	74	80
SD	36	32	33	92	103
TX	380	450	360	95	80
WA	22	30	33	150	110
Oth Sts	57	48	61	107	127
US	1,568	1,736	1,536	98	88

**United States Cattle on Feed
1,000+ Capacity Feedlots Number Placed**



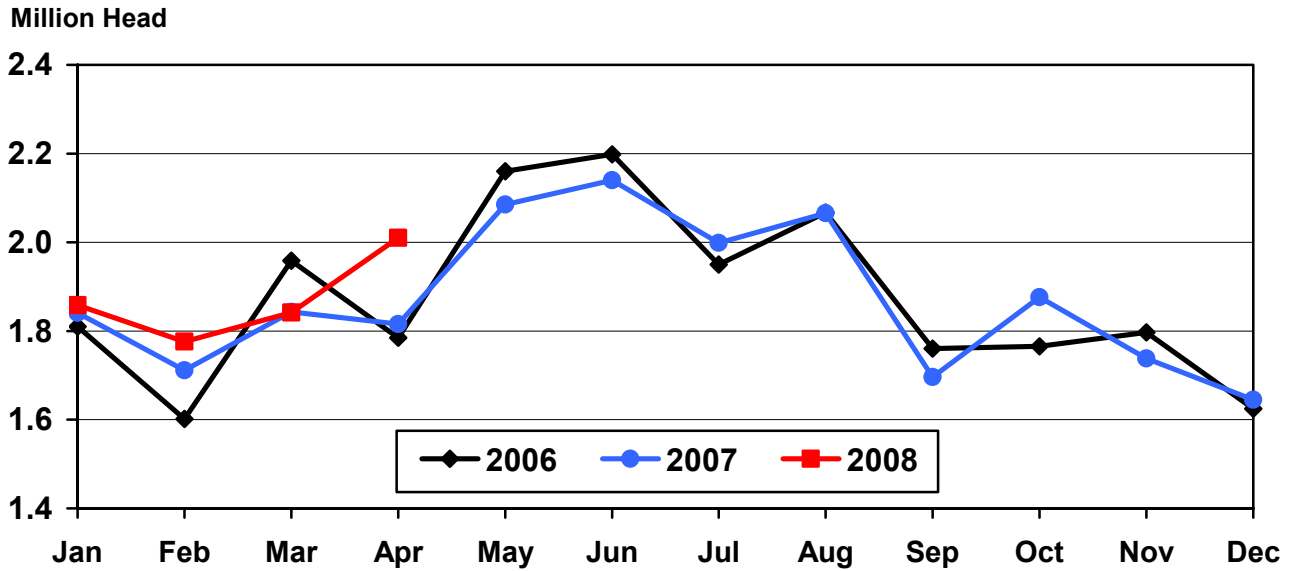
**Cattle on Feed: Number Placed on Feed by Weight Group, 1,000+ Capacity
Feedlots, by Month, State, and United States, 2007-2008**

State	During April									
	Under 600		600-699		700-799		800 Plus		Total	
	2007	2008	2007	2008	2007	2008	2007	2008	2007	2008
	<i>1,000 Head</i>	<i>1,000 Head</i>	<i>1,000 Head</i>	<i>1,000 Head</i>	<i>1,000 Head</i>	<i>1,000 Head</i>	<i>1,000 Head</i>	<i>1,000 Head</i>	<i>1,000 Head</i>	<i>1,000 Head</i>
CO	30	15	30	25	40	35	50	40	150	115
KS	60	45	65	70	110	115	120	130	355	360
NE	50	50	40	60	80	90	120	140	290	340
TX	105	90	75	80	110	110	90	80	380	360
Oth Sts	130	115	53	43	90	78	120	125	393	361
US	375	315	263	278	430	428	500	515	1,568	1,536
State	During March									
	Under 600		600-699		700-799		800 Plus		Total	
	2007	2008	2007	2008	2007	2008	2007	2008	2007	2008
	<i>1,000 Head</i>	<i>1,000 Head</i>	<i>1,000 Head</i>	<i>1,000 Head</i>	<i>1,000 Head</i>	<i>1,000 Head</i>	<i>1,000 Head</i>	<i>1,000 Head</i>	<i>1,000 Head</i>	<i>1,000 Head</i>
CO	15	20	30	25	50	45	65	45	160	135
KS	70	55	115	95	170	150	155	140	510	440
NE	40	50	50	50	110	110	150	150	350	360
TX	90	100	120	105	200	165	110	80	520	450
Oth Sts	130	110	60	55	110	91	120	95	420	351
US	345	335	375	330	640	561	600	510	1,960	1,736

**Cattle on Feed: Number Marketed, 1,000+ Capacity Feedlots,
by Month, State, and United States 2007-2008**

State	During Apr 2007	During Mar 2008	During Apr 2008		
			Number	as % of 2007	as % of Mar
	<i>1,000 Head</i>	<i>1,000 Head</i>	<i>1,000 Head</i>	<i>Percent</i>	<i>Percent</i>
AZ	30	31	37	123	119
CA	61	65	70	115	108
CO	130	160	165	127	103
ID	40	39	32	80	82
IA	59	68	77	131	113
KS	445	415	470	106	113
NE	340	390	400	118	103
NM	24	11	16	67	145
OK	68	58	74	109	128
SD	34	37	37	109	100
TX	490	480	540	110	113
WA	30	28	29	97	104
Oth Sts	65	60	63	97	105
US	1,816	1,842	2,010	111	109

United States Cattle on Feed 1,000+ Capacity Feedlots Number Marketed



**Cattle on Feed: Other Disappearance, 1,000+ Capacity Feedlots,
by Month, State, and United States 2007-2008 ¹**

State	During Apr 2007	During Mar 2008	During Apr 2008		
			Number	as % of 2007	as % of Mar
	<i>1,000 Head</i>	<i>1,000 Head</i>	<i>1,000 Head</i>	<i>Percent</i>	<i>Percent</i>
AZ	1	2	1	100	50
CA	4	5	4	100	80
CO	20	5	20	100	400
ID	5	3	1	20	33
IA	2	1	2	100	200
KS	40	15	20	50	133
NE	10	10	10	100	100
NM	1	1	1	100	100
OK	1	2	1	100	50
SD	2	5	1	50	20
TX	10	10	10	100	100
WA	1	1	1	100	100
Oth Sts	2	3	3	150	100
US	99	63	75	76	119

¹ Includes death loss, movement from feedlots to pasture, and shipments to other feedlots for further feeding.

Terms and Definitions of Cattle on Feed Estimates

Cattle on feed are animals being fed a ration of grain, silage, hay and/or protein supplement for slaughter market that are expected to produce a carcass that will grade select or better. It excludes cattle being "backgrounded only" for later sale as feeders or later placement in another feedlot.

Placements are cattle put into a feedlot, fed a ration which will produce a carcass that will grade select or better, and are intended for the slaughter market.

Marketings are cattle shipped out of feedlots to a slaughter market.

Other disappearance includes death loss, movement from feedlots to pasture, and shipments to other feedlots for further feeding.

Reliability of Cattle on Feed Estimates

Survey Procedures: During January and July all known feedlots in the U.S. with capacity of 1,000 or more head are surveyed to provide data for cattle on feed estimates. During the other months, all known feedlots from 17 States are surveyed. The 17 States account for 98 percent of the cattle on feed in feedlots with capacity of 1,000 or more head.

Estimating Procedures: These cattle on feed estimates were prepared by the Agricultural Statistics Board after reviewing recommendations and analysis submitted by each State office. Regional and State survey data were reviewed for reasonableness with each other and with estimates from the previous month when setting the current estimates.

Revision Policy: Revisions to previous estimates are made to improve month to month relationships. Estimates for the previous month are subject to revision in all States each month when current estimates are made. In February, all monthly estimates for the previous year, and the number of feedlots and annual marketings from two years ago are reviewed and subject to revisions. The reviews are primarily based on slaughter data, state check-off or brand data, and any other data that may have been received after the original estimate was made. Estimates will also be reviewed after data from the Census of Agriculture are available. No revisions will be made after that date and estimates become final.

Reliability: Since all 1,000+ capacity cattle on feed operators in every State are not included in the monthly survey, survey estimates are subject to sampling variability. Survey results are also subject to non-sampling errors such as omissions, duplications, and mistakes in reporting, recording, and processing the data. The effects of these errors cannot be measured directly. They are minimized through rigid quality controls in the data collection process and through a careful review of all reported data for consistency and reasonableness.

To assist users in evaluating the reliability of estimates in this report, the "**Root Mean Square Error**" is shown for selected items in the following table. The "Root Mean Square Error" is a statistical measure based on past performance and is computed using the differences between first and latest estimates. The "Root Mean Square Error" for cattle on feed inventory estimates over the past 10 years is .1 percent. This means that chances are 2 out of 3 that the final estimate will not be

above or below the current estimate of 11.1 million head by more than .1 percent. Chances are 9 out of 10 that the difference will not exceed .2 percent.

The following table also shows a 10 year record of the range of differences between first and latest estimates for selected items. Using estimates of number on feed as an example, changes between the first estimate and the latest estimate during the past 10 years have averaged 10,000 head, ranging from 0 to 35,000 head. During this period the initial estimate has been below the final estimate 7 times, and above the final estimate 1 time. This does not imply that the initial estimate is likely to understate or overstate final inventory.

Reliability of U.S. May 1 Cattle on Feed Estimates ¹

Item	Root Mean Square Error	90% Confidence Level		Difference Between First and Final Estimates ¹			Number of Years	
		Percent	(000) Head	Average	Smallest	Largest	First Above Final	First Below Final
	<i>Percent</i>	<i>Percent</i>	<i>1,000 Head</i>	<i>1,000 Head</i>	<i>1,000 Head</i>	<i>1,000 Head</i>	<i>Number</i>	<i>Number</i>
Number on Feed	0.1	0.2	27.5	10	0	35.0	1	7
Placements	0.6	1.1	17.3	7	0.0	22.0	3	4
Marketings	0.3	0.6	11.7	5	0.0	12.0	3	4

¹ Based on data for the past 10 years.

Information Contacts

Listed below are the commodity specialists in the Livestock Branch of the National Agricultural Statistics Service to contact for additional information.

Dan Kerestes, Chief, Livestock Branch (202) 720-3570

Livestock Section

Scott Hollis, Head, Livestock Section (202) 690-2424
 Jim Collom - Dairy Products (202) 690-3236
 Joe Gaynor - Dairy Products Prices (202) 690-2168
 Jason Hardegree - Cattle, Cattle on Feed (202) 720-3040
 Benita Hodge - Livestock Slaughter (515) 284-4340
 Scott Hollis - Sheep and Goats (202) 690-2424
 Mike Miller - Milk Production and Milk Cows (202) 720-3278
 Nicholas Streff - Hogs and Pigs (202) 720-3106

ACCESS TO REPORTS!!

For your convenience, there are several ways to obtain NASS reports, data products, and services:

INTERNET ACCESS

All NASS reports are available free of charge on the worldwide Internet. For access, connect to the Internet and go to the NASS Home Page at: **www.nass.usda.gov**.

E-MAIL SUBSCRIPTION

All NASS reports are available by subscription free of charge direct to your e-mail address. Starting with the NASS Home Page at **www.nass.usda.gov**, under the right navigation, *Receive reports by Email*, click on **National** or **State**. Follow the instructions on the screen.

PRINTED REPORTS OR DATA PRODUCTS

CALL OUR TOLL-FREE ORDER DESK: 800-999-6779 (U.S. and Canada)
Other areas, please call 703-605-6220 FAX: 703-605-6900
(Visa, MasterCard, check, or money order acceptable for payment.)

ASSISTANCE

For **assistance** with general agricultural statistics or further information about NASS or its products or services, contact the **Agricultural Statistics Hotline** at **800-727-9540**, 7:30 a.m. to 4:00 p.m. ET, or e-mail: **nass@nass.usda.gov**.

The U.S. Department of Agriculture (USDA) prohibits discrimination in all its programs and activities on the basis of race, color, national origin, age, disability, and where applicable, sex, marital status, familial status, parental status, religion, sexual orientation, genetic information, political beliefs, reprisal, or because all or a part of an individual's income is derived from any public assistance program. (Not all prohibited bases apply to all programs.) Persons with disabilities who require alternative means for communication of program information (Braille, large print, audiotape, etc.) should contact USDA's TARGET Center at (202) 720-2600 (voice and TDD).

To file a complaint of discrimination, write to USDA, Director, Office of Civil Rights, 1400 Independence Avenue, S.W., Washington, D.C. 20250-9410, or call (800) 795-3272 (voice) or (202) 720-6382 (TDD). USDA is an equal opportunity provider and employer.