



Cattle on Feed

Released June 20, 2008, by the National Agricultural Statistics Service (NASS), Agricultural Statistics Board, U.S. Department of Agriculture. For information on *Cattle on Feed* call Jason Hardegree at (202) 720-3040, office hours 7:30 a.m. to 4:00 p.m. ET.

U.S. Cattle on Feed Down 4 Percent

Cattle and calves on feed for slaughter market in the United States for feedlots with capacity of 1,000 or more head totaled 10.8 million head on June 1, 2008. The inventory was 4 percent below June 1, 2007 and 3 percent below June 1, 2006.

Placements in feedlots during May totaled 1.90 million, 12 percent below 2007 and slightly below 2006. Net placements were 1.82 million head. During May, placements of cattle and calves weighing less than 600 pounds were 340,000, 600-699 pounds were 350,000, 700-799 pounds were 564,000, and 800 pounds and greater were 645,000.

Marketings of fed cattle during May totaled 2.14 million, 3 percent above 2007 but 1 percent below 2006.

Other disappearance totaled 80,000 during May, 19 percent below 2007 and 30 percent below 2006.

**Cattle on Feed: Number on Feed, Placements, Marketings, and
Other Disappearance, 1,000+ Capacity Feedlots,
United States, June 1, 2006-2008**

Item	Number			2008 as % of	
	2006	2007	2008	2006	2007
	<i>1,000 Head</i>	<i>1,000 Head</i>	<i>1,000 Head</i>	<i>Percent</i>	<i>Percent</i>
On Feed May 1 ¹	11,559	11,297	11,135	96	99
Placed on Feed During May	1,903	2,159	1,899	100	88
Fed Cattle Marketed During May	2,160	2,085	2,140	99	103
Other Disappearance During May ²	115	99	80	70	81
On Feed Jun 1	11,187	11,272	10,814	97	96

¹ Cattle and calves on feed are animals for slaughter market being fed a ration of grain or other concentrates and are expected to produce a carcass that will grade select or better.

² Includes death loss, movement from feedlots to pasture, and shipments to other feedlots for further feeding.

**Cattle on Feed: Number on Feed, Placements, Marketings, and
Other Disappearance, 1,000+ Capacity Feedlots,
United States, May 1, 2006-2008**

Item	Number			2008 as % of	
	2006	2007	2008	2006	2007
	<i>1,000 Head</i>	<i>1,000 Head</i>	<i>1,000 Head</i>	<i>Percent</i>	<i>Percent</i>
On Feed Apr 1 ¹	11,812	11,644	11,684	99	100
Placed on Feed During Apr	1,619	1,568	1,536	95	98
Fed Cattle Marketed During Apr	1,785	1,816	2,010	113	111
Other Disappearance During Apr ²	87	99	75	86	76
On Feed May 1 ¹	11,559	11,297	11,135	96	99

¹ Cattle and calves on feed are animals for slaughter market being fed a ration of grain or other concentrates and are expected to produce a carcass that will grade select or better.

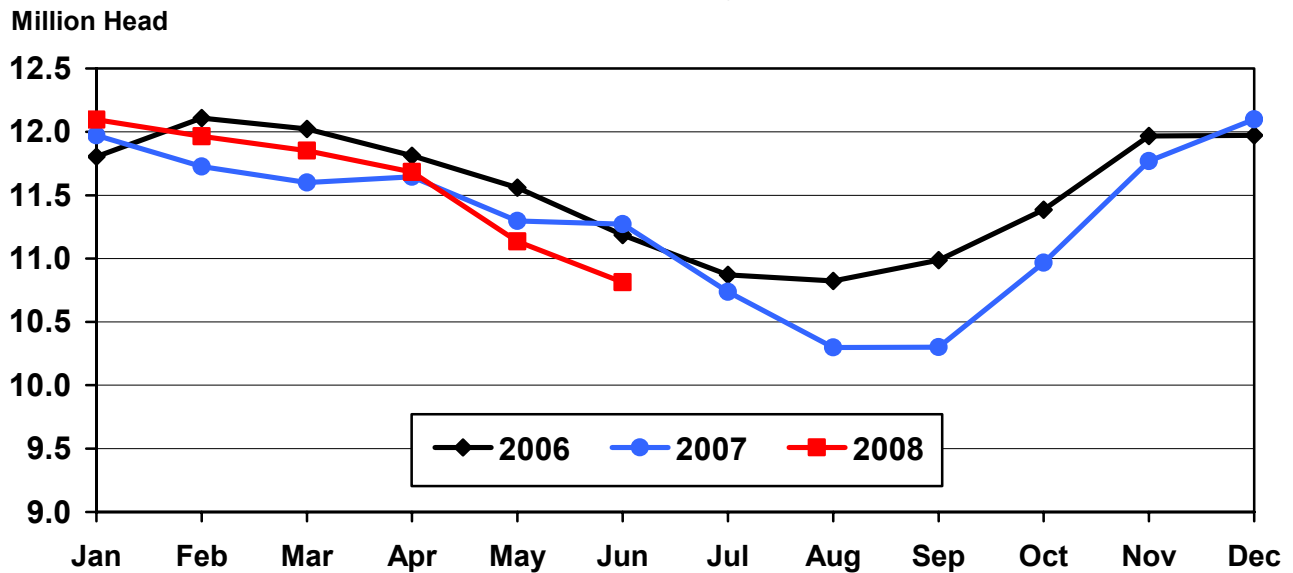
² Includes death loss, movement from feedlots to pasture, and shipments to other feedlots for further feeding.

**Cattle on Feed: Number on Feed, 1,000+ Capacity Feedlots,
by Month, State, and United States 2007-2008 ¹**

State	Jun 1, 2007	May 1, 2008	Jun 1, 2008		
			Number	as % of 2007	as % of May
	<i>1,000 Head</i>	<i>1,000 Head</i>	<i>1,000 Head</i>	<i>Percent</i>	<i>Percent</i>
AZ	340	370	365	107	99
CA	555	520	525	95	101
CO	1,020	950	920	90	97
ID	230	225	215	93	96
IA	520	530	520	100	98
KS	2,290	2,290	2,190	96	96
NE	2,290	2,380	2,250	98	95
NM	128	150	149	116	99
OK	340	305	305	90	100
SD	215	220	205	95	93
TX	2,870	2,690	2,690	94	100
WA	149	155	145	97	94
Oth Sts	325	350	335	103	96
US	11,272	11,135	10,814	96	97

¹ Cattle and calves on feed are animals for slaughter market being fed a ration of grain or other concentrates and are expected to produce a carcass that will grade select or better.

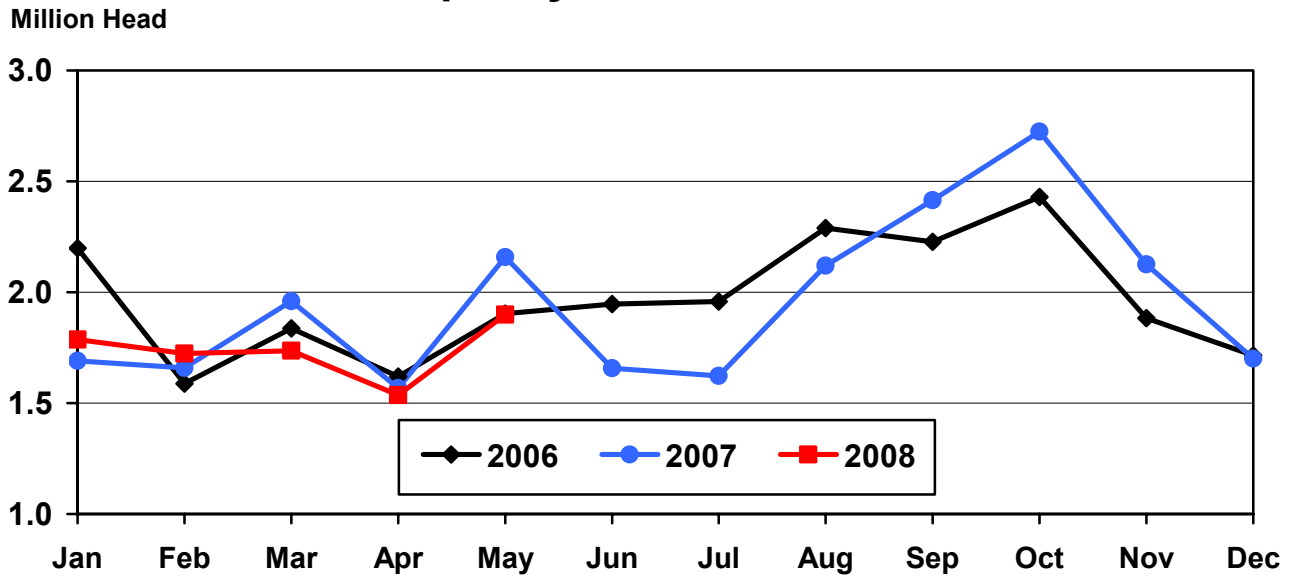
**United States Cattle on Feed
1,000+ Capacity Feedlots**



**Cattle on Feed: Number Placed on Feed, 1,000+ Capacity Feedlots,
by Month, State, and United States 2007-2008**

State	During May 2007	During Apr 2008	During May 2008		
			Number	as % of 2007	as % of Apr
	<i>1,000 Head</i>	<i>1,000 Head</i>	<i>1,000 Head</i>	<i>Percent</i>	<i>Percent</i>
AZ	36	34	34	94	100
CA	73	64	80	110	125
CO	175	115	150	86	130
ID	43	28	28	65	100
IA	54	59	58	107	98
KS	465	360	410	88	114
NE	390	340	370	95	109
NM	34	9	23	68	256
OK	71	40	76	107	190
SD	34	33	34	100	103
TX	710	360	560	79	156
WA	29	33	29	100	88
Oth Sts	45	61	47	104	77
US	2,159	1,536	1,899	88	124

**United States Cattle on Feed
1,000+ Capacity Feedlots Number Placed**



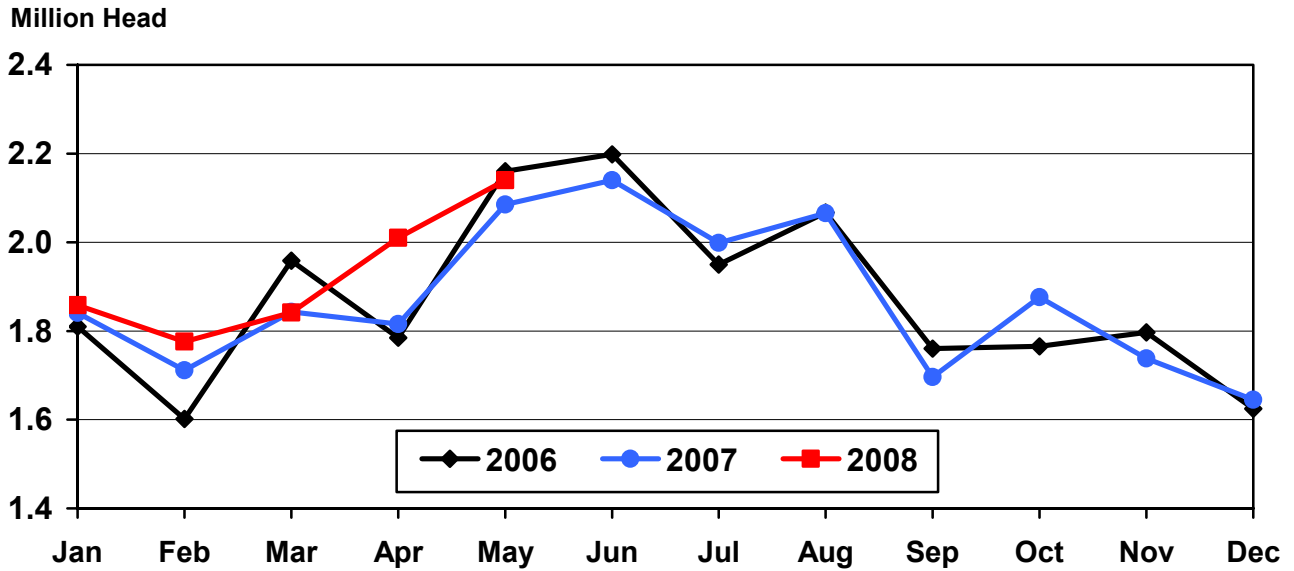
**Cattle on Feed: Number Placed on Feed by Weight Group, 1,000+ Capacity
Feedlots, by Month, State, and United States, 2007-2008**

State	During May									
	Under 600		600-699		700-799		800 Plus		Total	
	2007	2008	2007	2008	2007	2008	2007	2008	2007	2008
	<i>1,000 Head</i>	<i>1,000 Head</i>	<i>1,000 Head</i>	<i>1,000 Head</i>	<i>1,000 Head</i>	<i>1,000 Head</i>	<i>1,000 Head</i>	<i>1,000 Head</i>	<i>1,000 Head</i>	<i>1,000 Head</i>
CO	25	25	30	30	50	45	70	50	175	150
KS	80	50	85	70	135	130	165	160	465	410
NE	55	40	60	70	110	85	165	175	390	370
TX	130	105	145	125	260	210	175	120	710	560
Oth Sts	130	120	54	55	90	94	145	140	419	409
US	420	340	374	350	645	564	720	645	2,159	1,899
	During April									
	Under 600		600-699		700-799		800 Plus		Total	
	2007	2008	2007	2008	2007	2008	2007	2008	2007	2008
	<i>1,000 Head</i>	<i>1,000 Head</i>	<i>1,000 Head</i>	<i>1,000 Head</i>	<i>1,000 Head</i>	<i>1,000 Head</i>	<i>1,000 Head</i>	<i>1,000 Head</i>	<i>1,000 Head</i>	<i>1,000 Head</i>
CO	30	15	30	25	40	35	50	40	150	115
KS	60	45	65	70	110	115	120	130	355	360
NE	50	50	40	60	80	90	120	140	290	340
TX	105	90	75	80	110	110	90	80	380	360
Oth Sts	130	115	53	43	90	78	120	125	393	361
US	375	315	263	278	430	428	500	515	1,568	1,536

**Cattle on Feed: Number Marketed, 1,000+ Capacity Feedlots,
by Month, State, and United States 2007-2008**

State	During May 2007	During Apr 2008	During May 2008		
			Number	as % of 2007	as % of Apr
	<i>1,000 Head</i>	<i>1,000 Head</i>	<i>1,000 Head</i>	<i>Percent</i>	<i>Percent</i>
AZ	32	37	38	119	103
CA	65	70	71	109	101
CO	155	165	170	110	103
ID	42	32	36	86	113
IA	63	77	65	103	84
KS	500	470	490	98	104
NE	500	400	480	96	120
NM	23	16	23	100	144
OK	65	74	75	115	101
SD	45	37	46	102	124
TX	510	540	550	108	102
WA	33	29	38	115	131
Oth Sts	52	63	58	112	92
US	2,085	2,010	2,140	103	106

United States Cattle on Feed 1,000+ Capacity Feedlots Number Marketed



**Cattle on Feed: Other Disappearance, 1,000+ Capacity Feedlots,
by Month, State, and United States 2007-2008 ¹**

State	During May 2007	During Apr 2008	During May 2008		
			Number	as % of 2007	as % of Apr
	<i>1,000 Head</i>	<i>1,000 Head</i>	<i>1,000 Head</i>	<i>Percent</i>	<i>Percent</i>
AZ	4	1	1	25	100
CA	3	4	4	133	100
CO	20	20	10	50	50
ID	6	1	2	33	200
IA	1	2	3	300	150
KS	25	20	20	80	100
NE	20	10	20	100	200
NM	1	1	1	100	100
OK	1	1	1	100	100
SD	4	1	3	75	300
TX	10	10	10	100	100
WA	1	1	1	100	100
Oth Sts	3	3	4	133	133
US	99	75	80	81	107

¹ Includes death loss, movement from feedlots to pasture, and shipments to other feedlots for further feeding.

Terms and Definitions of Cattle on Feed Estimates

Cattle on feed are animals being fed a ration of grain, silage, hay and/or protein supplement for slaughter market that are expected to produce a carcass that will grade select or better. It excludes cattle being "backgrounded only" for later sale as feeders or later placement in another feedlot.

Placements are cattle put into a feedlot, fed a ration which will produce a carcass that will grade select or better, and are intended for the slaughter market.

Marketings are cattle shipped out of feedlots to a slaughter market.

Other disappearance includes death loss, movement from feedlots to pasture, and shipments to other feedlots for further feeding.

Reliability of Cattle on Feed Estimates

Survey Procedures: During January and July all known feedlots in the U.S. with capacity of 1,000 or more head are surveyed to provide data for cattle on feed estimates. During the other months, all known feedlots from 17 States are surveyed. The 17 States account for 98 percent of the cattle on feed in feedlots with capacity of 1,000 or more head.

Estimating Procedures: These cattle on feed estimates were prepared by the Agricultural Statistics Board after reviewing recommendations and analysis submitted by each State office. Regional and State survey data were reviewed for reasonableness with each other and with estimates from the previous month when setting the current estimates.

Revision Policy: Revisions to previous estimates are made to improve month to month relationships. Estimates for the previous month are subject to revision in all States each month when current estimates are made. In February, all monthly estimates for the previous year, and the number of feedlots and annual marketings from two years ago are reviewed and subject to revisions. The reviews are primarily based on slaughter data, state check-off or brand data, and any other data that may have been received after the original estimate was made. Estimates will also be reviewed after data from the Census of Agriculture are available. No revisions will be made after that date and estimates become final.

Reliability: Since all 1,000+ capacity cattle on feed operators in every State are not included in the monthly survey, survey estimates are subject to sampling variability. Survey results are also subject to non-sampling errors such as omissions, duplications, and mistakes in reporting, recording, and processing the data. The effects of these errors cannot be measured directly. They are minimized through rigid quality controls in the data collection process and through a careful review of all reported data for consistency and reasonableness.

To assist users in evaluating the reliability of estimates in this report, the "**Root Mean Square Error**" is shown for selected items in the following table. The "Root Mean Square Error" is a statistical measure based on past performance and is computed using the differences between first and latest estimates. The "Root Mean Square Error" for cattle on feed inventory estimates over the past 24 months is less than 0.1 percent (0.04). This means that chances are 2 out of 3 that the final

estimate will not be above or below the current estimate of 10.8 million head by more than 0.04 percent. Chances are 9 out of 10 that the difference will not exceed 0.1 percent.

The following table also shows a 24 month record of the range of differences between first and latest estimates for selected items. Using estimates of number on feed as an example, changes between the first estimate and the latest estimate during the past 24 months have averaged 2,000 head, ranging from 0 to 18,000 head. During this period the initial estimate has not been above the final estimate, but has been below the final estimate 3 times. This does not imply that the initial estimate is likely to understate or overstate final inventory.

Reliability of Monthly Cattle on Feed Estimates ¹

Item	Root Mean Square Error	90% Confidence Level		Difference Between First and Final Estimates ¹			Number of Months	
		Percent	(000) Head	Average	Smallest	Largest	First Above Final	First Below Final
	<i>Percent</i>	<i>Percent</i>	<i>1,000 Head</i>	<i>1,000 Head</i>	<i>1,000 Head</i>	<i>1,000 Head</i>	<i>Number</i>	<i>Number</i>
Number on Feed	0.0	0.1	10.8	2	0	18	0	3
Placements	0.2	0.4	7.6	3	0	10	9	3
Marketings	0.2	0.4	8.6	3	0	10	10	0

¹ Based on data for the past 24 months.

Information Contacts

Listed below are the commodity specialists in the Livestock Branch of the National Agricultural Statistics Service to contact for additional information.

Dan Kerestes, Chief, Livestock Branch (202) 720-3570

Livestock Section

Scott Hollis, Head, Livestock Section (202) 690-2424
 Jim Collom - Dairy Products (202) 690-3236
 Joe Gaynor - Dairy Products Prices (202) 690-2168
 Jason Hardegree - Cattle, Cattle on Feed (202) 720-3040
 Benita Hodge - Livestock Slaughter (515) 284-4340
 Scott Hollis - Sheep and Goats (202) 690-2424
 Mike Miller - Milk Production and Milk Cows (202) 720-3278
 Nicholas Streff - Hogs and Pigs (202) 720-3106

ACCESS TO REPORTS!!

For your convenience, there are several ways to obtain NASS reports, data products, and services:

INTERNET ACCESS

All NASS reports are available free of charge on the worldwide Internet. For access, connect to the Internet and go to the NASS Home Page at: **www.nass.usda.gov**.

E-MAIL SUBSCRIPTION

All NASS reports are available by subscription free of charge direct to your e-mail address. Starting with the NASS Home Page at **www.nass.usda.gov**, under the right navigation, *Receive reports by Email*, click on **National** or **State**. Follow the instructions on the screen.

PRINTED REPORTS OR DATA PRODUCTS

CALL OUR TOLL-FREE ORDER DESK: 800-999-6779 (U.S. and Canada)
Other areas, please call 703-605-6220 FAX: 703-605-6900
(Visa, MasterCard, check, or money order acceptable for payment.)

ASSISTANCE

For **assistance** with general agricultural statistics or further information about NASS or its products or services, contact the **Agricultural Statistics Hotline** at **800-727-9540**, 7:30 a.m. to 4:00 p.m. ET, or e-mail: **nass@nass.usda.gov**.

The U.S. Department of Agriculture (USDA) prohibits discrimination in all its programs and activities on the basis of race, color, national origin, age, disability, and where applicable, sex, marital status, familial status, parental status, religion, sexual orientation, genetic information, political beliefs, reprisal, or because all or a part of an individual's income is derived from any public assistance program. (Not all prohibited bases apply to all programs.) Persons with disabilities who require alternative means for communication of program information (Braille, large print, audiotape, etc.) should contact USDA's TARGET Center at (202) 720-2600 (voice and TDD).

To file a complaint of discrimination, write to USDA, Director, Office of Civil Rights, 1400 Independence Avenue, S.W., Washington, D.C. 20250-9410, or call (800) 795-3272 (voice) or (202) 720-6382 (TDD). USDA is an equal opportunity provider and employer.