



Cattle on Feed

Released July 25, 2008, by the National Agricultural Statistics Service (NASS), Agricultural Statistics Board, U.S. Department of Agriculture. For information on *Cattle on Feed* call Jason Hardegree at (202) 720-3040, office hours 7:30 a.m. to 4:00 p.m. ET.

U.S. Cattle on Feed Down 4 Percent

Cattle and calves on feed for slaughter market in the United States for feedlots with capacity of 1,000 or more head totaled 10.3 million head on July 1, 2008. The inventory was 4 percent below July 1, 2007 and 5 percent below July 1, 2006. The inventory included 6.43 million steers and steer calves, down 5 percent from the previous year. This group accounted for 62 percent of the total inventory. Heifers and heifer calves accounted for 3.82 million head, down 3 percent from 2007.

Placements in feedlots during June totaled 1.51 million, 9 percent below 2007 and 22 percent below 2006. Net placements were 1.45 million head. During June, placements of cattle and calves weighing less than 600 pounds were 365,000, 600-699 pounds were 325,000, 700-799 pounds were 383,000 and 800 pounds and greater were 440,000.

Marketings of fed cattle during June totaled 1.97 million, 8 percent below 2007 and 10 percent below 2006. This is the lowest fed cattle marketings for the month of June since the series began in 1996.

Other disappearance totaled 60,000 during June, 15 percent above 2007, but 5 percent below 2006.

U.S. All Cattle on Feed Down 5 Percent

Cattle on feed July 1, 2008, from all feedlots in the United States, totaled 11.7 million, down 5 percent from the 12.3 million on July 1, 2007 and down 6 percent from July 1, 2006. Cattle on feed in feedlots with 1,000 or more head accounted for 88 percent of the total cattle on feed on July 1, 2008, up 1 percent from July 1, 2007.

**Cattle on Feed: Number on Feed, Placements, Marketings, and
Other Disappearance, 1,000+ Capacity Feedlots,
United States, July 1, 2006-2008**

Item	Number			2008 as % of	
	2006	2007	2008	2006	2007
	<i>1,000 Head</i>	<i>1,000 Head</i>	<i>1,000 Head</i>	<i>Percent</i>	<i>Percent</i>
On Feed Jun 1 ¹	11,187	11,272	*10,815	97	96
Placed on Feed During Jun	1,946	1,657	1,513	78	91
Fed Cattle Marketed During Jun	2,198	2,140	1,973	90	92
Other Disappearance During Jun ²	63	52	60	95	115
On Feed Jul 1 ¹	10,872	10,737	10,295	95	96

* Revised.

¹ Cattle and calves on feed are animals for slaughter market being fed a ration of grain or other concentrates and are expected to produce a carcass that will grade select or better.

² Includes death loss, movement from feedlots to pasture, and shipments to other feedlots for further feeding.

**Cattle on Feed: Number on Feed, Placements, Marketings, and
Other Disappearance, 1,000+ Capacity Feedlots,
United States, June 1, 2006-2008**

Item	Number			2008 as % of	
	2006	2007	2008	2006	2007
	<i>1,000 Head</i>	<i>1,000 Head</i>	<i>1,000 Head</i>	<i>Percent</i>	<i>Percent</i>
On Feed May 1 ¹	11,559	11,297	11,135	96	99
Placed on Feed During May	1,903	2,159	*1,900	100	88
Fed Cattle Marketed During May	2,160	2,085	2,140	99	103
Other Disappearance During May ²	115	99	80	70	81
On Feed Jun 1 ¹	11,187	11,272	*10,815	97	96

* Revised.

¹ Cattle and calves on feed are animals for slaughter market being fed a ration of grain or other concentrates and are expected to produce a carcass that will grade select or better.

² Includes death loss, movement from feedlots to pasture, and shipments to other feedlots for further feeding.

**Cattle on Feed: Number on Feed by Class, 1,000+ Capacity Feedlots,
United States, July 1, 2006-2008**

Item	Number			2008 as % of	
	2006	2007	2008	2006	2007
	<i>1,000 Head</i>	<i>1,000 Head</i>	<i>1,000 Head</i>	<i>Percent</i>	<i>Percent</i>
Class on Feed Jul 1					
Steers and Steer Calves	7,092	6,742	6,432	91	95
Heifers and Heifer Calves	3,710	3,928	3,823	103	97
Cows and Bulls	70	67	40	57	60

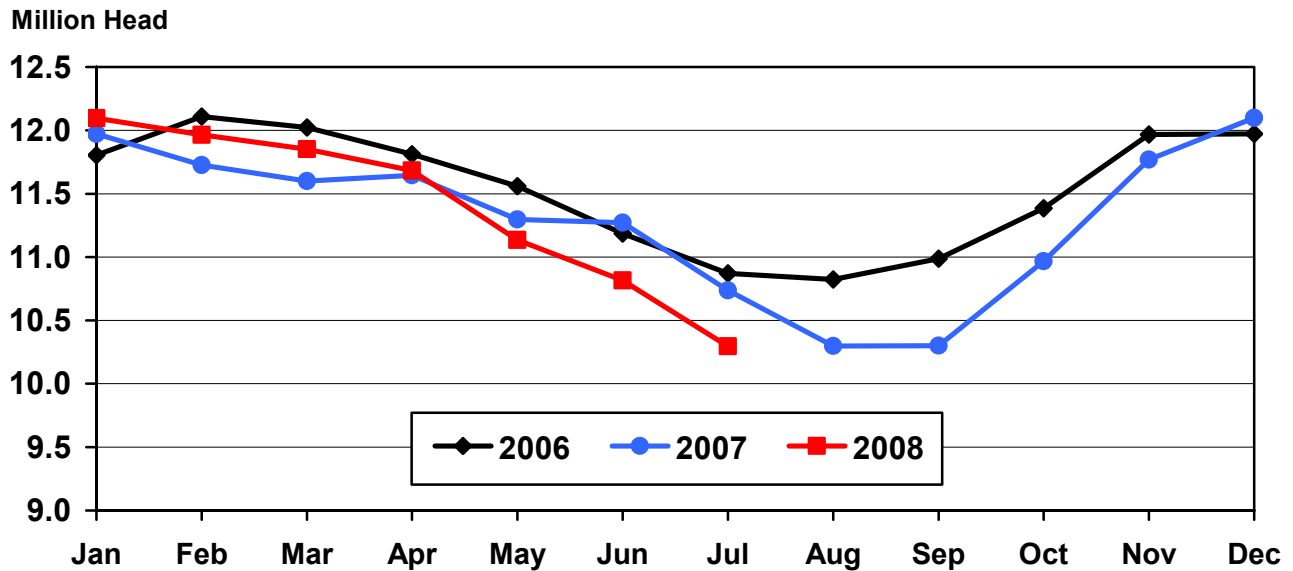
**Cattle on Feed: Number on Feed, 1,000+ Capacity Feedlots,
by Month, State, and United States 2007-2008¹**

State	Jul 1, 2007	Jun 1, 2008	Jul 1, 2008		
			Number	as % of 2007	as % of Jun
	<i>1,000 Head</i>	<i>1,000 Head</i>	<i>1,000 Head</i>	<i>Percent</i>	<i>Percent</i>
AZ	343	365	356	104	98
CA	545	525	520	95	99
CO	940	920	820	87	89
ID	220	215	200	91	93
IA	510	520	500	98	96
KS	2,140	2,190	2,080	97	95
NE	2,050	2,250	2,050	100	91
NM	132	*150	154	117	103
OK	325	305	300	92	98
SD	197	205	185	94	90
TX	2,870	2,690	2,660	93	99
WA	150	145	140	93	97
Oth Sts	315	335	330	105	99
US	10,737	*10,815	10,295	96	95

* Revised.

¹ Cattle and calves on feed are animals for slaughter market being fed a ration of grain or other concentrates and are expected to produce a carcass that will grade select or better.

United States Cattle on Feed 1,000+ Capacity Feedlots



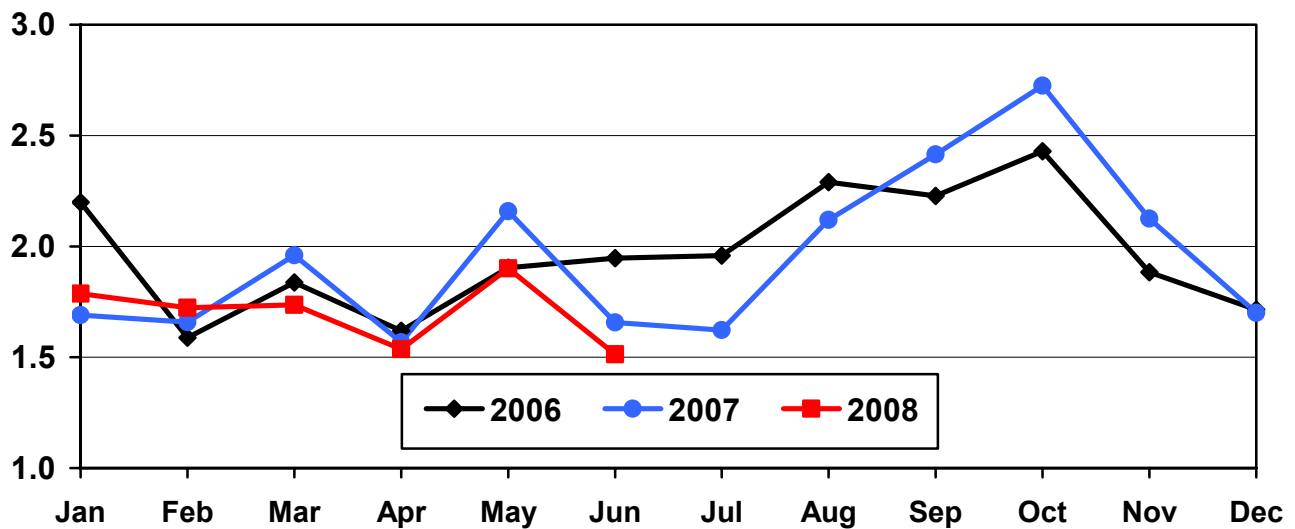
**Cattle on Feed: Number Placed on Feed, 1,000+ Capacity Feedlots,
by Month, State, and United States 2007-2008**

State	During Jun 2007	During May 2008	During Jun 2008		
			Number	as % of 2007	as % of May
	<i>1,000 Head</i>	<i>1,000 Head</i>	<i>1,000 Head</i>	<i>Percent</i>	<i>Percent</i>
AZ	39	34	32	82	94
CA	53	80	52	98	65
CO	120	150	80	67	53
ID	37	28	33	89	118
IA	52	58	41	79	71
KS	375	410	330	88	80
NE	330	370	290	88	78
NM	22	*24	32	145	133
OK	52	76	57	110	75
SD	24	34	21	88	62
TX	485	560	460	95	82
WA	31	29	28	90	97
Oth Sts	37	47	57	154	121
US	1,657	*1,900	1,513	91	80

*Revised.

**United States Cattle on Feed
1,000+ Capacity Feedlots Number Placed**

Million Head



**Cattle on Feed: Number Placed on Feed by Weight Group, 1,000+ Capacity
Feedlots, by Month, State, and United States, 2007-2008**

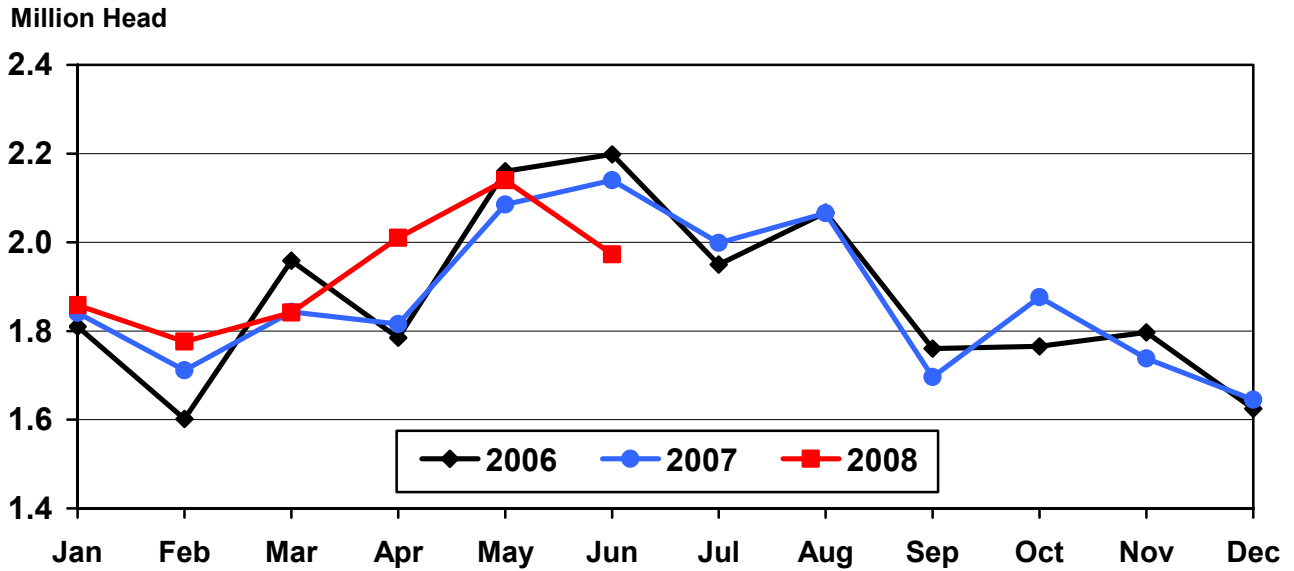
State	During June									
	Under 600		600-699		700-799		800 Plus		Total	
	2007	2008	2007	2008	2007	2008	2007	2008	2007	2008
	<i>1,000 Head</i>	<i>1,000 Head</i>	<i>1,000 Head</i>	<i>1,000 Head</i>	<i>1,000 Head</i>	<i>1,000 Head</i>	<i>1,000 Head</i>	<i>1,000 Head</i>	<i>1,000 Head</i>	<i>1,000 Head</i>
CO	15	20	20	10	35	25	50	25	120	80
KS	80	60	70	75	125	100	100	95	375	330
NE	75	40	55	40	70	70	130	140	330	290
TX	110	135	135	140	160	120	80	65	485	460
Oth Sts	125	110	45	60	67	68	110	115	347	353
US	405	365	325	325	457	383	470	440	1,657	1,513
	During May									
	Under 600		600-699		700-799		800 Plus		Total	
	2007	2008	2007	2008	2007	2008	2007	2008	2007	2008
	<i>1,000 Head</i>	<i>1,000 Head</i>	<i>1,000 Head</i>	<i>1,000 Head</i>	<i>1,000 Head</i>	<i>1,000 Head</i>	<i>1,000 Head</i>	<i>1,000 Head</i>	<i>1,000 Head</i>	<i>1,000 Head</i>
CO	25	25	30	30	50	45	70	50	175	150
KS	80	50	85	70	135	130	165	160	465	410
NE	55	40	60	70	110	85	165	175	390	370
TX	130	105	145	125	260	210	175	120	710	560
Oth Sts	130	120	54	55	90	*95	145	140	419	*410
US	420	340	374	350	645	*565	720	645	2,159	*1,900

* Revised.

**Cattle on Feed: Number Marketed, 1,000+ Capacity Feedlots,
by Month, State, and United States 2007-2008**

State	During Jun 2007	During May 2008	During Jun 2008		
			Number	as % of 2007	as % of May
	<i>1,000 Head</i>	<i>1,000 Head</i>	<i>1,000 Head</i>	<i>Percent</i>	<i>Percent</i>
AZ	35	38	40	114	105
CA	60	71	55	92	77
CO	190	170	170	89	100
ID	46	36	47	102	131
IA	61	65	60	98	92
KS	515	490	430	83	88
NE	560	480	475	85	99
NM	17	23	27	159	117
OK	66	75	61	92	81
SD	39	46	38	97	83
TX	475	550	480	101	87
WA	30	38	32	107	84
Oth Sts	46	58	58	126	100
US	2,140	2,140	1,973	92	92

United States Cattle on Feed 1,000+ Capacity Feedlots Number Marketed



**Cattle on Feed: Other Disappearance, 1,000+ Capacity Feedlots,
by Month, State, and United States 2007-2008¹**

State	During Jun 2007	During May 2008	During Jun 2008		
			Number	as % of 2007	as % of May
	<i>1,000 Head</i>	<i>1,000 Head</i>	<i>1,000 Head</i>	<i>Percent</i>	<i>Percent</i>
AZ	1	1	1	100	100
CA	3	4	2	67	50
CO	10	10	10	100	100
ID	1	2	1	100	50
IA	1	3	1	100	33
KS	10	20	10	100	50
NE	10	20	15	150	75
NM	1	1	1	100	100
OK	1	1	1	100	100
SD	3	3	3	100	100
TX	10	10	10	100	100
WA	0	1	1		100
Oth Sts	1	4	4	400	100
US	52	80	60	115	75

¹ Includes death loss, movement from feedlots to pasture, and shipments to other feedlots for further feeding.

**Cattle on Feed: Number on Feed by Class, 1,000+ Capacity Feedlots,
by Quarter, State, and United States, 2007-2008**

State	Steers & Steer Calves			Heifers & Heifer Calves			Cows and Bulls		
	Jul 1, 2007	Apr 1, 2008	Jul 1, 2008	Jul 1, 2007	Apr 1, 2008	Jul 1, 2008	Jul 1, 2007	Apr 1, 2008	Jul 1, 2008
	<i>1,000 Head</i>	<i>1,000 Head</i>	<i>1,000 Head</i>	<i>1,000 Head</i>	<i>1,000 Head</i>	<i>1,000 Head</i>	<i>1,000 Head</i>	<i>1,000 Head</i>	<i>1,000 Head</i>
AZ	342	371	354	1	3	2	0	0	0
CA	490	485	470	54	45	50	1	0	0
CO	590	600	485	345	415	330	5	5	5
ID	133	132	112	83	96	86	4	2	2
IA	340	380	335	169	170	165	1	0	0
KS	1,090	1,270	1,135	1,030	1,130	940	20	20	5
NE	1,230	1,550	1,270	810	890	775	10	10	5
NM	84	94	78	48	64	76	0	0	0
OK	225	220	190	100	120	110	0	0	0
SD	98	121	93	80	86	75	19	18	17
TX	1,780	1,790	1,600	1,087	1,087	1,059	3	3	1
WA	90	74	65	59	77	74	1	1	1
Oth Sts	250	260	245	62	93	81	3	2	4
US	6,742	7,347	6,432	3,928	4,276	3,823	67	61	40

**Cattle on Feed: Total Number on Feed, United States,
July 1, 2006-2008 ¹**

State	Jul 1, 2006	Jul 1, 2007	July 1, 2008		
			Number	as % of 2006	as % of 2007
	<i>1,000 Head</i>	<i>1,000 Head</i>	<i>1,000 Head</i>	<i>Percent</i>	<i>Percent</i>
US	12,500	12,300	11,700	94	95

¹ Cattle and calves on feed are animals for slaughter market being fed a ration of grain or other concentrates and are expected to produce a carcass that will grade select or better.

Terms and Definitions of Cattle on Feed Estimates

Cattle on feed are animals being fed a ration of grain, silage, hay and/or protein supplement for slaughter market that are expected to produce a carcass that will grade select or better. It excludes cattle being "backgrounded only" for later sale as feeders or later placement in another feedlot.

Placements are cattle put into a feedlot, fed a ration which will produce a carcass that will grade select or better, and are intended for the slaughter market.

Marketings are cattle shipped out of feedlots to a slaughter market.

Other disappearance includes death loss, movement from feedlots to pasture, and shipments to other feedlots for further feeding.

Reliability of Cattle on Feed Estimates

Survey Procedures: During January and July all known feedlots in the U.S. with capacity of 1,000 or more head are surveyed to provide data for cattle on feed estimates. During the other months, all known feedlots from 17 States are surveyed. The 17 States account for 98 percent of the cattle on feed in feedlots with capacity of 1,000 or more head.

Estimating Procedures: These cattle on feed estimates were prepared by the Agricultural Statistics Board after reviewing recommendations and analysis submitted by each State office. Regional and State survey data were reviewed for reasonableness with each other and with estimates from the previous month when setting the current estimates.

Revision Policy: Revisions to previous estimates are made to improve month to month relationships. Estimates for the previous month are subject to revision in all States each month when current estimates are made. In February, all monthly estimates for the previous year, and the number of feedlots and annual marketings from two years ago are reviewed and subject to revisions. The reviews are primarily based on slaughter data, state check-off or brand data, and any other data that may have been received after the original estimate was made. Estimates will also be reviewed after data from the Census of Agriculture are available. No revisions will be made after that date and estimates become final.

Reliability: Since all 1,000+ capacity cattle on feed operators in every State are not included in the monthly survey, survey estimates are subject to sampling variability. Survey results are also subject to non-sampling errors such as omissions, duplications, and mistakes in reporting, recording, and processing the data. The effects of these errors cannot be measured directly. They are minimized through rigid quality controls in the data collection process and through a careful review of all reported data for consistency and reasonableness.

To assist users in evaluating the reliability of estimates in this report, the "**Root Mean Square Error**" is shown for selected items in the following table. The "Root Mean Square Error" is a statistical measure based on past performance and is computed using the differences between first and latest estimates. The "Root Mean Square Error" for cattle on feed inventory estimates over the past 24 months is less than 0.1 percent (0.04). This means that chances are 2 out of 3 that the final

estimate will not be above or below the current estimate of 10.3 million head by more than 0.04 percent. Chances are 9 out of 10 that the difference will not exceed 0.1 percent.

The following table also shows a 24 month record of the range of differences between first and latest estimates for selected items. Using estimates of number on feed as an example, changes between the first estimate and the latest estimate during the past 24 months have averaged 2,000 head, ranging from 0 to 18,000 head. During this period the initial estimate has not been above the final estimate, but has been below the final estimate 4 times. This does not imply that the initial estimate is likely to understate or overstate final inventory.

Reliability of Monthly Cattle on Feed Estimates ¹

Item	Root Mean Square Error	90% Confidence Level		Difference Between First and Final Estimates ¹			Number of Months	
		Percent	(000) Head	Average	Smallest	Largest	First Above Final	First Below Final
	<i>Percent</i>	<i>Percent</i>	<i>1,000 Head</i>	<i>1,000 Head</i>	<i>1,000 Head</i>	<i>1,000 Head</i>	<i>Number</i>	<i>Number</i>
Number on Feed	0.0	0.1	10.3	2	0	18	0	4
Placements	0.2	0.4	6.1	3	0	10	8	4
Marketings	0.2	0.4	7.9	2	0	10	9	0

¹ Based on data for the past 24 months.

Information Contacts

Listed below are the commodity specialists in the Livestock Branch of the National Agricultural Statistics Service to contact for additional information.

Dan Kerestes, Chief, Livestock Branch (202) 720-3570

Livestock Section

Scott Hollis, Head, Livestock Section (202) 690-2424
 Jim Collom - Dairy Products (202) 690-3236
 Joe Gaynor - Dairy Products Prices (202) 690-2168
 Jason Hardegree - Cattle, Cattle on Feed (202) 720-3040
 Benita Hodge - Livestock Slaughter (515) 284-4340
 Everett Olbert - Sheep and Goats (202) 720-4751
 Mike Miller - Milk Production and Milk Cows (202) 720-3278
 Nick Streff - Hogs and Pigs (202) 720-3106

ACCESS TO REPORTS!!

For your convenience, there are several ways to obtain NASS reports, data products, and services:

INTERNET ACCESS

All NASS reports are available free of charge on the worldwide Internet. For access, connect to the Internet and go to the NASS Home Page at: www.nass.usda.gov.

E-MAIL SUBSCRIPTION

All NASS reports are available by subscription free of charge direct to your e-mail address. Starting with the NASS Home Page at www.nass.usda.gov, under the right navigation, *Receive reports by Email*, click on **National** or **State**. Follow the instructions on the screen.

PRINTED REPORTS OR DATA PRODUCTS

CALL OUR TOLL-FREE ORDER DESK: 800-999-6779 (U.S. and Canada)
Other areas, please call 703-605-6220 FAX: 703-605-6900
(Visa, MasterCard, check, or money order acceptable for payment.)

ASSISTANCE

For **assistance** with general agricultural statistics or further information about NASS or its products or services, contact the **Agricultural Statistics Hotline** at **800-727-9540**, 7:30 a.m. to 4:00 p.m. ET, or e-mail: nass@nass.usda.gov.

The U.S. Department of Agriculture (USDA) prohibits discrimination in all its programs and activities on the basis of race, color, national origin, age, disability, and where applicable, sex, marital status, familial status, parental status, religion, sexual orientation, genetic information, political beliefs, reprisal, or because all or a part of an individual's income is derived from any public assistance program. (Not all prohibited bases apply to all programs.) Persons with disabilities who require alternative means for communication of program information (Braille, large print, audiotape, etc.) should contact USDA's TARGET Center at (202) 720-2600 (voice and TDD).

To file a complaint of discrimination, write to USDA, Director, Office of Civil Rights, 1400 Independence Avenue, S.W., Washington, D.C. 20250-9410, or call (800) 795-3272 (voice) or (202) 720-6382 (TDD). USDA is an equal opportunity provider and employer.