



Cattle on Feed

Released August 22, 2008, by the National Agricultural Statistics Service (NASS), Agricultural Statistics Board, U.S. Department of Agriculture. For information on *Cattle on Feed* call Jason Hardegree at (202) 720-3040, office hours 7:30 a.m. to 4:00 p.m. ET.

U.S. Cattle on Feed Down 4 Percent

Cattle and calves on feed for slaughter market in the United States for feedlots with capacity of 1,000 or more head totaled 9.87 million head on August 1, 2008. The inventory was 4 percent below August 1, 2007 and 9 percent below August 1, 2006.

Placements in feedlots during July totaled 1.66 million, 2 percent above 2007 but 15 percent below 2006. Net placements were 1.62 million head. This is the second lowest placements for the month of July since the series began in 1996. During July, placements of cattle and calves weighing less than 600 pounds were 360,000, 600-699 pounds were 320,000, 700-799 pounds were 476,000 and 800 pounds and greater were 505,000.

Marketings of fed cattle during July totaled 2.04 million, 2 percent above 2007 and 5 percent above 2006.

Other disappearance totaled 45,000 during July, 26 percent below 2007 and 22 percent below 2006.

**Cattle on Feed: Number on Feed, Placements, Marketings, and
Other Disappearance, 1,000+ Capacity Feedlots,
United States, August 1, 2006-2008**

Item	Number			2008 as % of	
	2006	2007	2008	2006	2007
	<i>1,000 Head</i>	<i>1,000 Head</i>	<i>1,000 Head</i>	<i>Percent</i>	<i>Percent</i>
On Feed Jul 1 ¹	10,872	10,737	10,295	95	96
Placed on Feed During Jul	1,958	1,622	1,661	85	102
Fed Cattle Marketed During Jul	1,950	1,999	2,042	105	102
Other Disappearance During Jul ²	58	61	45	78	74
On Feed Aug 1	10,822	10,299	9,869	91	96

¹ Cattle and calves on feed are animals for slaughter market being fed a ration of grain or other concentrates and are expected to produce a carcass that will grade select or better.

² Includes death loss, movement from feedlots to pasture, and shipments to other feedlots for further feeding.

**Cattle on Feed: Number on Feed, Placements, Marketings, and
Other Disappearance, 1,000+ Capacity Feedlots,
United States, July 1, 2006-2008**

Item	Number			2008 as % of	
	2006	2007	2008	2006	2007
	<i>1,000 Head</i>	<i>1,000 Head</i>	<i>1,000 Head</i>	<i>Percent</i>	<i>Percent</i>
On Feed Jun 1 ¹	11,187	11,272	10,815	97	96
Placed on Feed During Jun	1,946	1,657	*1,518	78	92
Fed Cattle Marketed During Jun	2,198	2,140	*1,978	90	92
Other Disappearance During Jun ²	63	52	60	95	115
On Feed Jul 1 ¹	10,872	10,737	10,295	95	96

*Revised.

¹ Cattle and calves on feed are animals for slaughter market being fed a ration of grain or other concentrates and are expected to produce a carcass that will grade select or better.

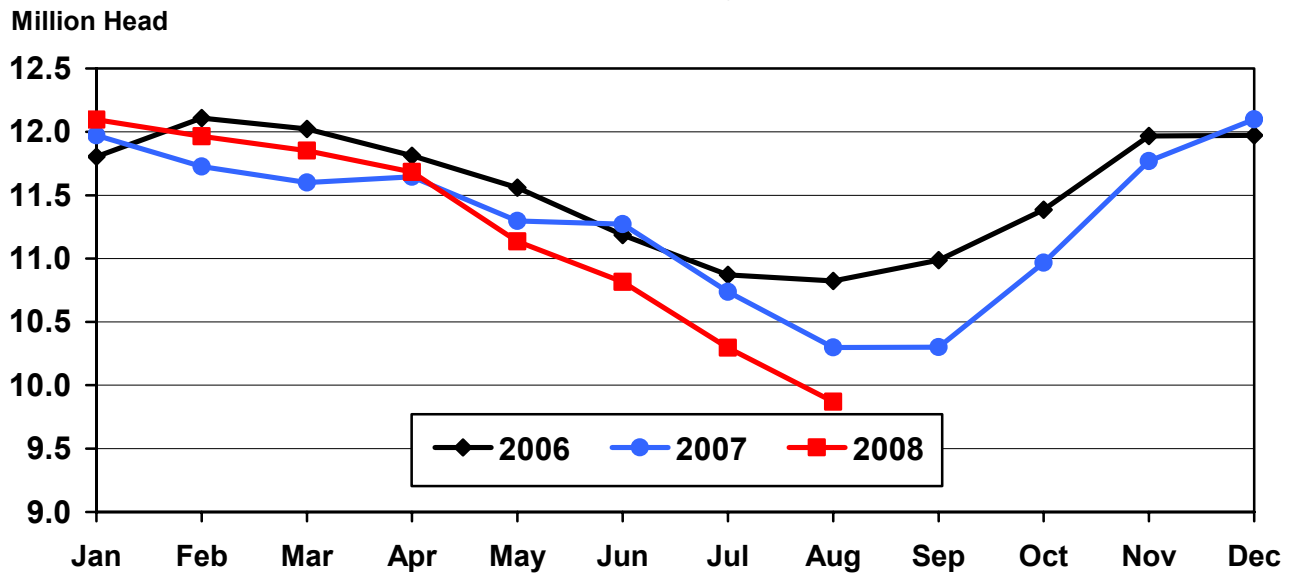
² Includes death loss, movement from feedlots to pasture, and shipments to other feedlots for further feeding.

**Cattle on Feed: Number on Feed, 1,000+ Capacity Feedlots,
by Month, State, and United States 2007-2008 ¹**

State	Aug 1, 2007	Jul 1, 2008	Aug 1, 2008			
			Number	as % of 2007	as % of Jul	
	<i>1,000 Head</i>	<i>1,000 Head</i>	<i>1,000 Head</i>	<i>Percent</i>	<i>Percent</i>	
AZ	341	356	357	105	100	
CA	540	520	515	95	99	
CO	870	820	750	86	91	
ID	205	200	180	88	90	
IA	500	500	475	95	95	
KS	2,100	2,080	2,010	96	97	
NE	1,910	2,050	1,920	101	94	
NM	129	154	164	127	106	
OK	305	300	290	95	97	
SD	175	185	170	97	92	
TX	2,780	2,660	2,590	93	97	
WA	144	140	133	92	95	
Oth Sts	300	330	315	105	95	
US	10,299	10,295	9,869	96	96	

¹ Cattle and calves on feed are animals for slaughter market being fed a ration of grain or other concentrates and are expected to produce a carcass that will grade select or better.

**United States Cattle on Feed
1,000+ Capacity Feedlots**

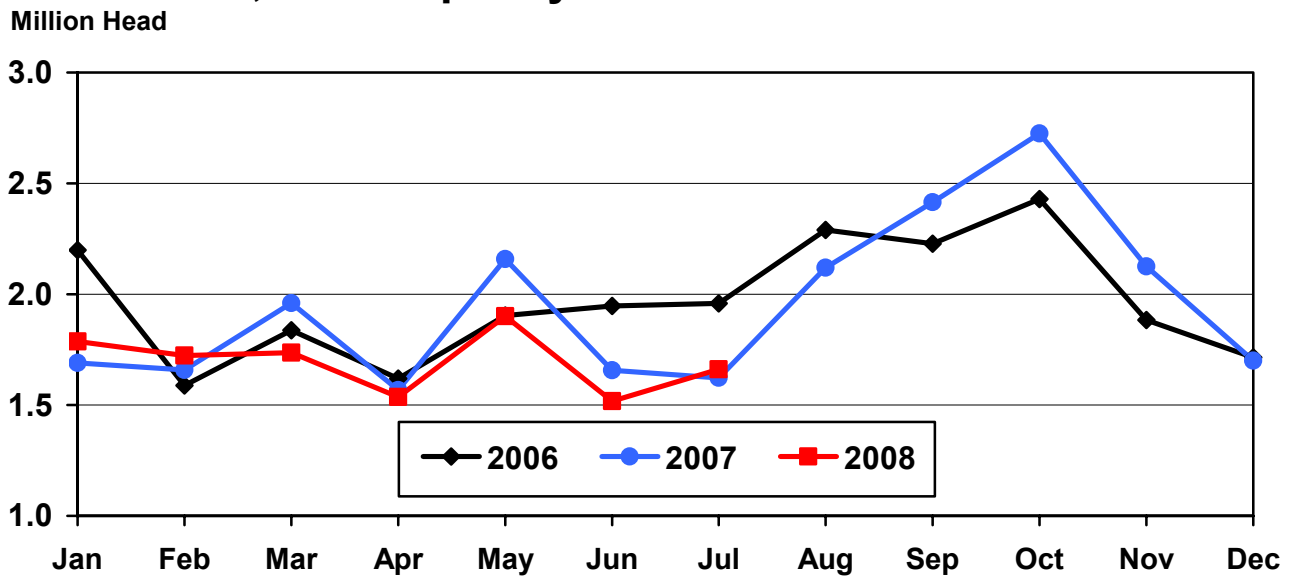


**Cattle on Feed: Number Placed on Feed, 1,000+ Capacity Feedlots,
by Month, State, and United States 2007-2008**

State	During Jul 2007	During Jun 2008	During Jul 2008		
			Number	as % of 2007	as % of Jun
	<i>1,000 Head</i>	<i>1,000 Head</i>	<i>1,000 Head</i>	<i>Percent</i>	<i>Percent</i>
AZ	32	32	37	116	116
CA	51	52	45	88	87
CO	115	*85	105	91	124
ID	35	33	29	83	88
IA	64	41	51	80	124
KS	430	330	440	102	133
NE	350	290	320	91	110
NM	12	32	32	267	100
OK	48	57	46	96	81
SD	22	21	21	95	100
TX	390	460	460	118	100
WA	27	28	32	119	114
Oth Sts	46	57	43	93	75
US	1,622	*1,518	1,661	102	109

*Revised.

**United States Cattle on Feed
1,000+ Capacity Feedlots Number Placed**



**Cattle on Feed: Number Placed on Feed by Weight Group, 1,000+ Capacity
Feedlots, by Month, State, and United States, 2007-2008**

State	During July									
	Under 600		600-699		700-799		800 Plus		Total	
	2007	2008	2007	2008	2007	2008	2007	2008	2007	2008
	<i>1,000 Head</i>	<i>1,000 Head</i>	<i>1,000 Head</i>	<i>1,000 Head</i>	<i>1,000 Head</i>	<i>1,000 Head</i>	<i>1,000 Head</i>	<i>1,000 Head</i>	<i>1,000 Head</i>	<i>1,000 Head</i>
CO	15	15	20	20	35	30	45	40	115	105
KS	75	70	90	90	140	155	125	125	430	440
NE	55	40	60	50	90	90	145	140	350	320
TX	110	130	100	110	115	130	65	90	390	460
Oth Sts	105	105	42	50	65	71	125	110	337	336
US	360	360	312	320	445	476	505	505	1,622	1,661
	During June									
	Under 600		600-699		700-799		800 Plus		Total	
	2007	2008	2007	2008	2007	2008	2007	2008	2007	2008
	<i>1,000 Head</i>	<i>1,000 Head</i>	<i>1,000 Head</i>	<i>1,000 Head</i>	<i>1,000 Head</i>	<i>1,000 Head</i>	<i>1,000 Head</i>	<i>1,000 Head</i>	<i>1,000 Head</i>	<i>1,000 Head</i>
CO	15	20	20	10	35	25	50	*30	120	*85
KS	80	60	70	75	125	100	100	95	375	330
NE	75	40	55	40	70	70	130	140	330	290
TX	110	135	135	140	160	120	80	65	485	460
Oth Sts	125	110	45	60	67	68	110	115	347	353
US	405	365	325	325	457	383	470	*445	1,657	*1,518

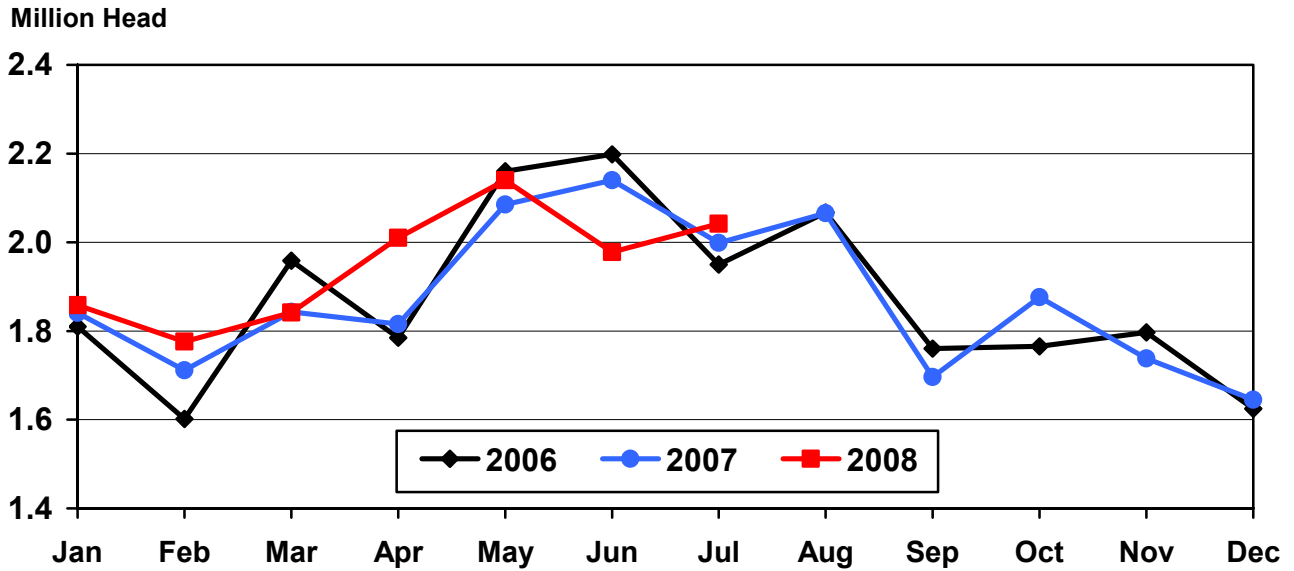
* Revised.

**Cattle on Feed: Number Marketed, 1,000+ Capacity Feedlots,
by Month, State, and United States 2007-2008**

State	During Jul 2007	During Jun 2008	During Jul 2008		
			Number	as % of 2007	as % of Jun
	<i>1,000 Head</i>	<i>1,000 Head</i>	<i>1,000 Head</i>	<i>Percent</i>	<i>Percent</i>
AZ	33	40	35	106	88
CA	54	55	48	89	87
CO	175	*175	170	97	97
ID	49	47	48	98	102
IA	73	60	75	103	125
KS	450	430	500	111	116
NE	480	475	440	92	93
NM	14	27	21	150	78
OK	67	61	55	82	90
SD	42	38	35	83	92
TX	470	480	520	111	108
WA	32	32	38	119	119
Oth Sts	60	58	57	95	98
US	1,999	*1,978	2,042	102	103

* Revised.

United States Cattle on Feed 1,000+ Capacity Feedlots Number Marketed



**Cattle on Feed: Other Disappearance, 1,000+ Capacity Feedlots,
by Month, State, and United States 2007-2008 ¹**

State	During Jul 2007	During Jun 2008	During Jul 2008		
			Number	as % of 2007	as % of Jun
	<i>1,000 Head</i>	<i>1,000 Head</i>	<i>1,000 Head</i>	<i>Percent</i>	<i>Percent</i>
AZ	1	1	1	100	100
CA	2	2	2	100	100
CO	10	10	5	50	50
ID	1	1	1	100	100
IA	1	1	1	100	100
KS	20	10	10	50	100
NE	10	15	10	100	67
NM	1	1	1	100	100
OK	1	1	1	100	100
SD	2	3	1	50	33
TX	10	10	10	100	100
WA	1	1	1	100	100
Oth Sts	1	4	1	100	25
US	61	60	45	74	75

¹ Includes death loss, movement from feedlots to pasture, and shipments to other feedlots for further feeding.

Terms and Definitions of Cattle on Feed Estimates

Cattle on feed are animals being fed a ration of grain, silage, hay and/or protein supplement for slaughter market that are expected to produce a carcass that will grade select or better. It excludes cattle being "backgrounded only" for later sale as feeders or later placement in another feedlot.

Placements are cattle put into a feedlot, fed a ration which will produce a carcass that will grade select or better, and are intended for the slaughter market.

Marketings are cattle shipped out of feedlots to a slaughter market.

Other disappearance includes death loss, movement from feedlots to pasture, and shipments to other feedlots for further feeding.

Reliability of Cattle on Feed Estimates

Survey Procedures: During January and July all known feedlots in the U.S. with capacity of 1,000 or more head are surveyed to provide data for cattle on feed estimates. During the other months, all known feedlots from 17 States are surveyed. The 17 States account for 98 percent of the cattle on feed in feedlots with capacity of 1,000 or more head.

Estimating Procedures: These cattle on feed estimates were prepared by the Agricultural Statistics Board after reviewing recommendations and analysis submitted by each State office. Regional and State survey data were reviewed for reasonableness with each other and with estimates from the previous month when setting the current estimates.

Revision Policy: Revisions to previous estimates are made to improve month to month relationships. Estimates for the previous month are subject to revision in all States each month when current estimates are made. In February, all monthly estimates for the previous year, and the number of feedlots and annual marketings from two years ago are reviewed and subject to revisions. The reviews are primarily based on slaughter data, state check-off or brand data, and any other data that may have been received after the original estimate was made. Estimates will also be reviewed after data from the Census of Agriculture are available. No revisions will be made after that date and estimates become final.

Reliability: Since all 1,000+ capacity cattle on feed operators in every State are not included in the monthly survey, survey estimates are subject to sampling variability. Survey results are also subject to non-sampling errors such as omissions, duplications, and mistakes in reporting, recording, and processing the data. The effects of these errors cannot be measured directly. They are minimized through rigid quality controls in the data collection process and through a careful review of all reported data for consistency and reasonableness.

To assist users in evaluating the reliability of estimates in this report, the "**Root Mean Square Error**" is shown for selected items in the following table. The "Root Mean Square Error" is a statistical measure based on past performance and is computed using the differences between first and latest estimates. The "Root Mean Square Error" for cattle on feed inventory estimates over the past 24 months is less than 0.1 percent (0.04). This means that chances are 2 out of 3 that the final

estimate will not be above or below the current estimate of 9.87 million head by more than 0.04 percent. Chances are 9 out of 10 that the difference will not exceed 0.1 percent.

The following table also shows a 24 month record of the range of differences between first and latest estimates for selected items. Using estimates of number on feed as an example, changes between the first estimate and the latest estimate during the past 24 months have averaged 2,000 head, ranging from 0 to 18,000 head. During this period the initial estimate has not been above the final estimate, but has been below the final estimate 4 times. This does not imply that the initial estimate is likely to understate or overstate final inventory.

Reliability of Monthly Cattle on Feed Estimates ¹

Item	Root Mean Square Error	90% Confidence Level		Difference Between First and Final Estimates ¹			Number of Months	
		Percent	(000) Head	Average	Smallest	Largest	First Above Final	First Below Final
	<i>Percent</i>	<i>Percent</i>	<i>1,000 Head</i>	<i>1,000 Head</i>	<i>1,000 Head</i>	<i>1,000 Head</i>	<i>Number</i>	<i>Number</i>
Number on Feed	0.0	0.1	9.9	2	0	18	0	4
Placements	0.2	0.4	6.6	3	0	10	7	5
Marketings	0.2	0.4	8.2	2	0	10	8	1

¹ Based on data for the past 24 months.

Information Contacts

Listed below are the commodity specialists in the Livestock Branch of the National Agricultural Statistics Service to contact for additional information.

Dan Kerestes, Chief, Livestock Branch (202) 720-3570

Livestock Section

Scott Hollis, Head, Livestock Section (202) 690-2424
 Jim Collom - Dairy Products (202) 690-3236
 Joe Gaynor - Dairy Products Prices (202) 690-2168
 Jason Hardegree - Cattle, Cattle on Feed (202) 720-3040
 Benita Hodge - Livestock Slaughter (515) 284-4340
 Everett Olbert - Sheep and Goats (202) 720-4751
 Mike Miller - Milk Production and Milk Cows (202) 720-3278
 Nick Streff - Hogs and Pigs (202) 720-3106

ACCESS TO REPORTS!!

For your convenience, there are several ways to obtain NASS reports, data products, and services:

INTERNET ACCESS

All NASS reports are available free of charge on the worldwide Internet. For access, connect to the Internet and go to the NASS Home Page at: **www.nass.usda.gov**.

E-MAIL SUBSCRIPTION

All NASS reports are available by subscription free of charge direct to your e-mail address. Starting with the NASS Home Page at **www.nass.usda.gov**, under the right navigation, *Receive reports by Email*, click on **National** or **State**. Follow the instructions on the screen.

PRINTED REPORTS OR DATA PRODUCTS

CALL OUR TOLL-FREE ORDER DESK: 800-999-6779 (U.S. and Canada)
Other areas, please call 703-605-6220 FAX: 703-605-6900
(Visa, MasterCard, check, or money order acceptable for payment.)

ASSISTANCE

For **assistance** with general agricultural statistics or further information about NASS or its products or services, contact the **Agricultural Statistics Hotline** at **800-727-9540**, 7:30 a.m. to 4:00 p.m. ET, or e-mail: **nass@nass.usda.gov**.

The U.S. Department of Agriculture (USDA) prohibits discrimination in all its programs and activities on the basis of race, color, national origin, age, disability, and where applicable, sex, marital status, familial status, parental status, religion, sexual orientation, genetic information, political beliefs, reprisal, or because all or a part of an individual's income is derived from any public assistance program. (Not all prohibited bases apply to all programs.) Persons with disabilities who require alternative means for communication of program information (Braille, large print, audiotape, etc.) should contact USDA's TARGET Center at (202) 720-2600 (voice and TDD).

To file a complaint of discrimination, write to USDA, Director, Office of Civil Rights, 1400 Independence Avenue, S.W., Washington, D.C. 20250-9410, or call (800) 795-3272 (voice) or (202) 720-6382 (TDD). USDA is an equal opportunity provider and employer.