



# Cattle on Feed

---

Released September 19, 2008, by the National Agricultural Statistics Service (NASS), Agricultural Statistics Board, U.S. Department of Agriculture. For information on *Cattle on Feed* call Jason Hardegree at (202) 720-3040, office hours 7:30 a.m. to 4:00 p.m. ET.

## U.S. Cattle on Feed Down 3 Percent

**Cattle and calves on feed** for slaughter market in the United States for feedlots with capacity of 1,000 or more head totaled 10.0 million head on September 1, 2008. The inventory was 3 percent below September 1, 2007 and 9 percent below September 1, 2006.

**Placements** in feedlots during August totaled 2.06 million, 3 percent below 2007 and 10 percent below 2006. Net placements were 2.01 million head. This is the second lowest placements for the month of August since the series began in 1996. During August, placements of cattle and calves weighing less than 600 pounds were 365,000, 600-699 pounds were 410,000, 700-799 pounds were 566,000, and 800 pounds and greater were 720,000.

**Marketings** of fed cattle during August totaled 1.88 million, 9 percent below 2007 and 9 percent below 2006. This is the lowest fed cattle marketings for the month of August since the series began in 1996.

**Other disappearance** totaled 49,000 during August, 2 percent below 2007 and 17 percent below 2006.

**Cattle on Feed: Number on Feed, Placements, Marketings, and  
Other Disappearance, 1,000+ Capacity Feedlots,  
United States, September 1, 2006-2008**

Item	Number			2008 as % of	
	2006	2007	2008	2006	2007
	<i>1,000 Head</i>	<i>1,000 Head</i>	<i>1,000 Head</i>	<i>Percent</i>	<i>Percent</i>
On Feed Aug 1 <sup>1</sup>	10,822	10,299	9,869	91	96
Placed on Feed During Aug	2,290	2,119	2,061	90	97
Fed Cattle Marketed During Aug	2,067	2,066	1,884	91	91
Other Disappearance During Aug <sup>2</sup>	59	50	49	83	98
On Feed Sep 1	10,986	10,302	9,997	91	97

<sup>1</sup> Cattle and calves on feed are animals for slaughter market being fed a ration of grain or other concentrates and are expected to produce a carcass that will grade select or better.

<sup>2</sup> Includes death loss, movement from feedlots to pasture, and shipments to other feedlots for further feeding.

**Cattle on Feed: Number on Feed, Placements, Marketings, and  
Other Disappearance, 1,000+ Capacity Feedlots,  
United States, August 1, 2006-2008**

Item	Number			2008 as % of	
	2006	2007	2008	2006	2007
	<i>1,000 Head</i>	<i>1,000 Head</i>	<i>1,000 Head</i>	<i>Percent</i>	<i>Percent</i>
On Feed Jul 1 <sup>1</sup>	10,872	10,737	10,295	95	96
Placed on Feed During Jul	1,958	1,622	*1,666	85	103
Fed Cattle Marketed During Jul	1,950	1,999	*2,047	105	102
Other Disappearance During Jul <sup>2</sup>	58	61	45	78	74
On Feed Aug 1 <sup>1</sup>	10,822	10,299	9,869	91	96

\*Revised.

<sup>1</sup> Cattle and calves on feed are animals for slaughter market being fed a ration of grain or other concentrates and are expected to produce a carcass that will grade select or better.

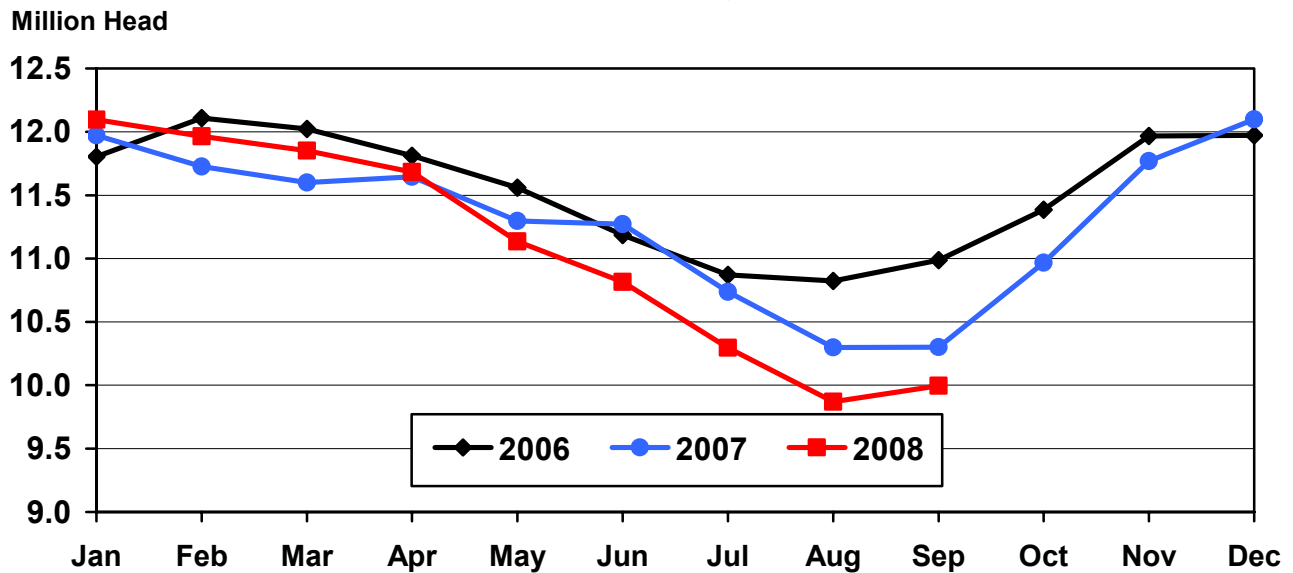
<sup>2</sup> Includes death loss, movement from feedlots to pasture, and shipments to other feedlots for further feeding.

**Cattle on Feed: Number on Feed, 1,000+ Capacity Feedlots,  
by Month, State, and United States 2007-2008 <sup>1</sup>**

State	Sep 1, 2007	Aug 1, 2008	Sep 1, 2008		
			Number	as % of 2007	as % of Aug
	<i>1,000 Head</i>	<i>1,000 Head</i>	<i>1,000 Head</i>	<i>Percent</i>	<i>Percent</i>
AZ	348	357	362	104	101
CA	530	515	505	95	98
CO	850	750	770	91	103
ID	205	180	180	88	100
IA	490	475	470	96	99
KS	2,140	2,010	2,090	98	104
NE	1,930	1,920	1,960	102	102
NM	131	164	167	127	102
OK	310	290	305	98	105
SD	175	170	165	94	97
TX	2,740	2,590	2,580	94	100
WA	148	133	138	93	104
Oth Sts	305	315	305	100	97
US	10,302	9,869	9,997	97	101

<sup>1</sup> Cattle and calves on feed are animals for slaughter market being fed a ration of grain or other concentrates and are expected to produce a carcass that will grade select or better.

### United States Cattle on Feed 1,000+ Capacity Feedlots

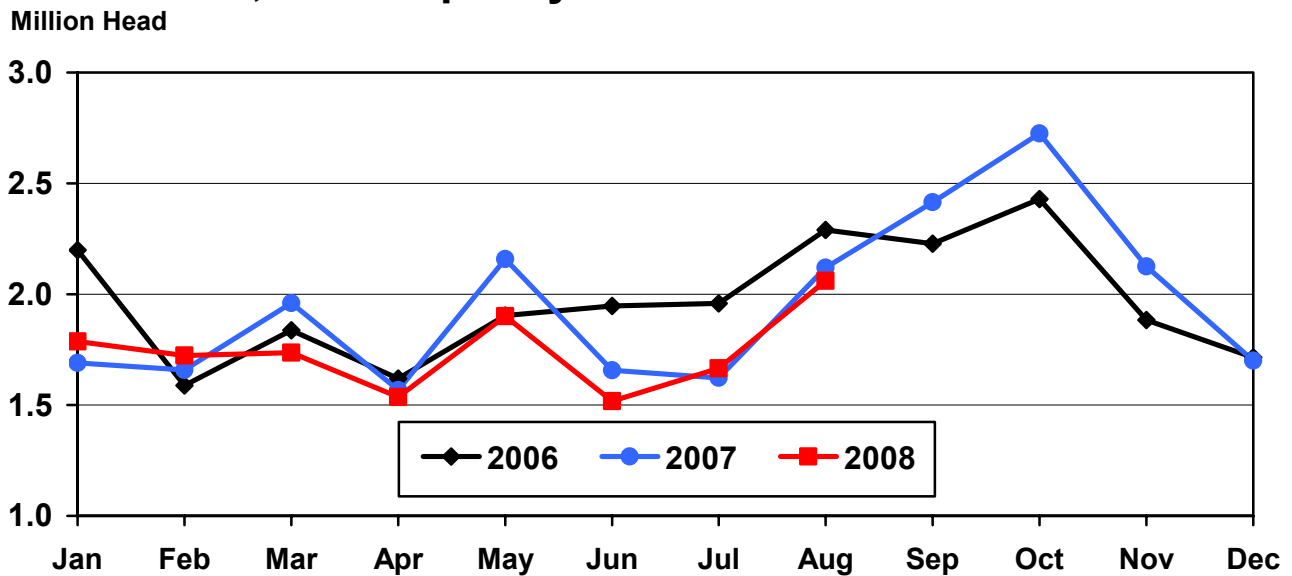


**Cattle on Feed: Number Placed on Feed, 1,000+ Capacity Feedlots,  
by Month, State, and United States 2007-2008**

State	During Aug 2007	During Jul 2008	During Aug 2008		
			Number	as % of 2007	as % of Jul
	<i>1,000 Head</i>	<i>1,000 Head</i>	<i>1,000 Head</i>	<i>Percent</i>	<i>Percent</i>
AZ	36	37	33	92	89
CA	54	45	37	69	82
CO	170	*110	190	112	173
ID	48	29	45	94	155
IA	71	51	72	101	141
KS	520	440	520	100	118
NE	465	320	445	96	139
NM	22	32	27	123	84
OK	75	46	70	93	152
SD	37	21	28	76	133
TX	520	460	510	98	111
WA	35	32	36	103	113
Oth Sts	66	43	48	73	112
US	2,119	*1,666	2,061	97	124

\*Revised.

**United States Cattle on Feed  
1,000+ Capacity Feedlots Number Placed**



**Cattle on Feed: Number Placed on Feed by Weight Group, 1,000+ Capacity  
Feedlots, by Month, State, and United States, 2007-2008**

State	During August									
	Under 600		600-699		700-799		800 Plus		Total	
	2007	2008	2007	2008	2007	2008	2007	2008	2007	2008
	<i>1,000 Head</i>	<i>1,000 Head</i>	<i>1,000 Head</i>	<i>1,000 Head</i>	<i>1,000 Head</i>	<i>1,000 Head</i>	<i>1,000 Head</i>	<i>1,000 Head</i>	<i>1,000 Head</i>	<i>1,000 Head</i>
CO	25	15	30	20	40	50	75	105	170	190
KS	100	65	120	105	160	190	140	160	520	520
NE	75	60	70	60	115	105	205	220	465	445
TX	160	125	160	170	140	140	60	75	520	510
Oth Sts	130	100	60	55	94	81	160	160	444	396
US	490	365	440	410	549	566	640	720	2,119	2,061
	During July									
	Under 600		600-699		700-799		800 Plus		Total	
	2007	2008	2007	2008	2007	2008	2007	2008	2007	2008
	<i>1,000 Head</i>	<i>1,000 Head</i>	<i>1,000 Head</i>	<i>1,000 Head</i>	<i>1,000 Head</i>	<i>1,000 Head</i>	<i>1,000 Head</i>	<i>1,000 Head</i>	<i>1,000 Head</i>	<i>1,000 Head</i>
CO	15	15	20	20	35	*35	45	40	115	*110
KS	75	70	90	90	140	155	125	125	430	440
NE	55	40	60	50	90	90	145	140	350	320
TX	110	130	100	110	115	130	65	90	390	460
Oth Sts	105	105	42	50	65	71	125	110	337	336
US	360	360	312	320	445	*481	505	505	1,622	*1,666

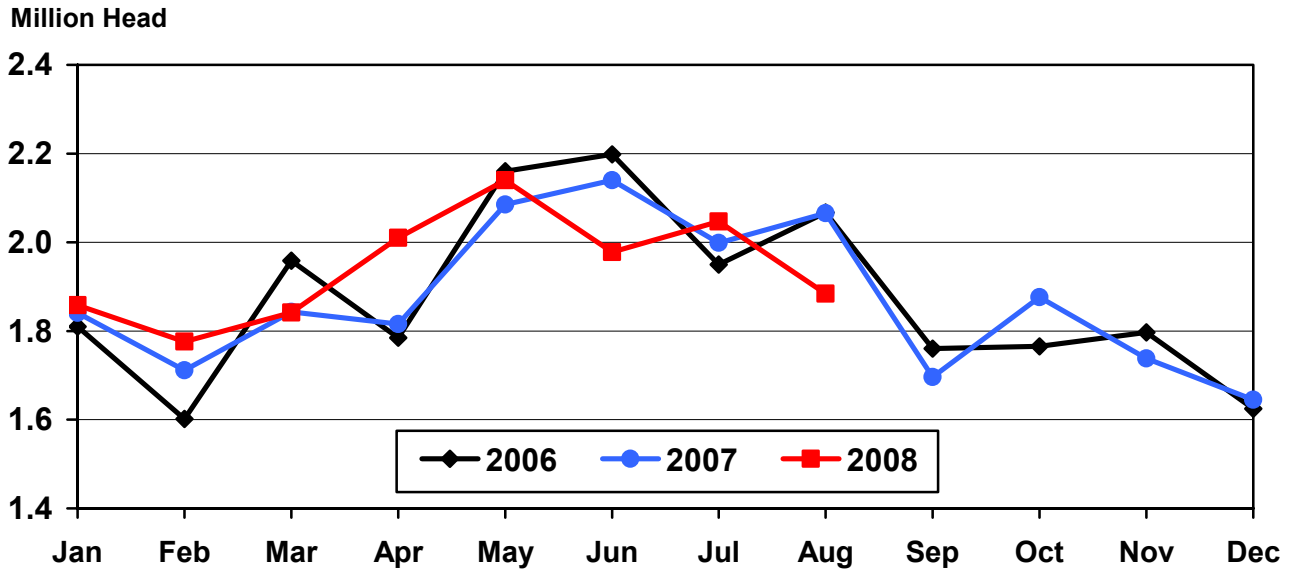
\* Revised.

**Cattle on Feed: Number Marketed, 1,000+ Capacity Feedlots,  
by Month, State, and United States 2007-2008**

State	During Aug 2007	During Jul 2008	During Aug 2008		
			Number	as % of 2007	as % of Jul
	<i>1,000 Head</i>	<i>1,000 Head</i>	<i>1,000 Head</i>	<i>Percent</i>	<i>Percent</i>
AZ	28	35	27	96	77
CA	62	48	45	73	94
CO	185	*175	165	89	94
ID	47	48	44	94	92
IA	80	75	75	94	100
KS	465	500	430	92	86
NE	435	440	395	91	90
NM	19	21	23	121	110
OK	69	55	54	78	98
SD	36	35	32	89	91
TX	550	520	510	93	98
WA	30	38	30	100	79
Oth Sts	60	57	54	90	95
US	2,066	*2,047	1,884	91	92

\* Revised.

## United States Cattle on Feed 1,000+ Capacity Feedlots Number Marketed



**Cattle on Feed: Other Disappearance, 1,000+ Capacity Feedlots,  
by Month, State, and United States 2007-2008 <sup>1</sup>**

State	During Aug 2007	During Jul 2008	During Aug 2008		
			Number	as % of 2007	as % of Jul
	<i>1,000 Head</i>	<i>1,000 Head</i>	<i>1,000 Head</i>	<i>Percent</i>	<i>Percent</i>
AZ	1	1	1	100	100
CA	2	2	2	100	100
CO	5	5	5	100	100
ID	1	1	1	100	100
IA	1	1	2	200	200
KS	15	10	10	67	100
NE	10	10	10	100	100
NM	1	1	1	100	100
OK	1	1	1	100	100
SD	1	1	1	100	100
TX	10	10	10	100	100
WA	1	1	1	100	100
Oth Sts	1	1	4	400	400
US	50	45	49	98	109

<sup>1</sup> Includes death loss, movement from feedlots to pasture, and shipments to other feedlots for further feeding.

## Terms and Definitions of Cattle on Feed Estimates

**Cattle on feed** are animals being fed a ration of grain, silage, hay and/or protein supplement for slaughter market that are expected to produce a carcass that will grade select or better. It excludes cattle being "backgrounded only" for later sale as feeders or later placement in another feedlot.

**Placements** are cattle put into a feedlot, fed a ration which will produce a carcass that will grade select or better, and are intended for the slaughter market.

**Marketings** are cattle shipped out of feedlots to a slaughter market.

**Other disappearance** includes death loss, movement from feedlots to pasture, and shipments to other feedlots for further feeding.

## Reliability of Cattle on Feed Estimates

**Survey Procedures:** During January and July all known feedlots in the U.S. with capacity of 1,000 or more head are surveyed to provide data for cattle on feed estimates. During the other months, all known feedlots from 17 States are surveyed. The 17 States account for 98 percent of the cattle on feed in feedlots with capacity of 1,000 or more head.

**Estimating Procedures:** These cattle on feed estimates were prepared by the Agricultural Statistics Board after reviewing recommendations and analysis submitted by each State office. Regional and State survey data were reviewed for reasonableness with each other and with estimates from the previous month when setting the current estimates.

**Revision Policy:** Revisions to previous estimates are made to improve month to month relationships. Estimates for the previous month are subject to revision in all States each month when current estimates are made. In February, all monthly estimates for the previous year, and the number of feedlots and annual marketings from two years ago are reviewed and subject to revisions. The reviews are primarily based on slaughter data, state check-off or brand data, and any other data that may have been received after the original estimate was made. Estimates will also be reviewed after data from the Census of Agriculture are available. No revisions will be made after that date and estimates become final.

**Reliability:** Since all 1,000+ capacity cattle on feed operators in every State are not included in the monthly survey, survey estimates are subject to sampling variability. Survey results are also subject to non-sampling errors such as omissions, duplications, and mistakes in reporting, recording, and processing the data. The effects of these errors cannot be measured directly. They are minimized through rigid quality controls in the data collection process and through a careful review of all reported data for consistency and reasonableness.

To assist users in evaluating the reliability of estimates in this report, the "**Root Mean Square Error**" is shown for selected items in the following table. The "Root Mean Square Error" is a statistical measure based on past performance and is computed using the differences between first and latest estimates. The "Root Mean Square Error" for cattle on feed inventory estimates over the past 24 months is less than 0.1 percent (0.04). This means that chances are 2 out of 3 that the final

estimate will not be above or below the current estimate of 10.0 million head by more than 0.04 percent. Chances are 9 out of 10 that the difference will not exceed 0.1 percent.

The following table also shows a 24 month record of the range of differences between first and latest estimates for selected items. Using estimates of number on feed as an example, changes between the first estimate and the latest estimate during the past 24 months have averaged 2,000 head, ranging from 0 to 18,000 head. During this period the initial estimate has not been above the final estimate, but has been below the final estimate 4 times. This does not imply that the initial estimate is likely to understate or overstate final inventory.

**Reliability of Monthly Cattle on Feed Estimates <sup>1</sup>**

Item	Root Mean Square Error	90% Confidence Level		Difference Between First and Final Estimates <sup>1</sup>			Number of Months	
		Percent	(000) Head	Average	Smallest	Largest	First Above Final	First Below Final
	<i>Percent</i>	<i>Percent</i>	<i>1,000 Head</i>	<i>1,000 Head</i>	<i>1,000 Head</i>	<i>1,000 Head</i>	<i>Number</i>	<i>Number</i>
Number on Feed	0.0	0.1	10.0	2	0	18	0	4
Placements	0.2	0.4	8.2	3	0	10	6	6
Marketings	0.2	0.4	7.5	2	0	10	7	2

<sup>1</sup> Based on data for the past 24 months.

### Information Contacts

Listed below are the commodity specialists in the Livestock Branch of the National Agricultural Statistics Service to contact for additional information.

Dan Kerestes, Chief, Livestock Branch ..... (202) 720-3570

#### Livestock Section

Scott Hollis, Head, Livestock Section ..... (202) 690-2424  
 Jim Collom - Dairy Products ..... (202) 690-3236  
 Joe Gaynor - Dairy Products Prices ..... (202) 690-2168  
 Jason Hardegree - Cattle, Cattle on Feed ..... (202) 720-3040  
 Benita Hodge - Livestock Slaughter ..... (515) 284-4340  
 Everett Olbert - Sheep and Goats ..... (202) 720-4751  
 Mike Miller - Milk Production and Milk Cows ..... (202) 720-3278  
 Nick Streff - Hogs and Pigs ..... (202) 720-3106



## ACCESS TO REPORTS!!

---

For your convenience, there are several ways to obtain NASS reports, data products, and services:

### INTERNET ACCESS

All NASS reports are available free of charge on the worldwide Internet. For access, connect to the Internet and go to the NASS Home Page at: **www.nass.usda.gov**.

### E-MAIL SUBSCRIPTION

All NASS reports are available by subscription free of charge direct to your e-mail address. Starting with the NASS Home Page at **www.nass.usda.gov**, under the right navigation, *Receive reports by Email*, click on **National** or **State**. Follow the instructions on the screen.

-----

### PRINTED REPORTS OR DATA PRODUCTS

**CALL OUR TOLL-FREE ORDER DESK: 800-999-6779 (U.S. and Canada)**  
**Other areas, please call 703-605-6220      FAX: 703-605-6900**  
**(Visa, MasterCard, check, or money order acceptable for payment.)**

-----

### ASSISTANCE

For **assistance** with general agricultural statistics or further information about NASS or its products or services, contact the **Agricultural Statistics Hotline** at **800-727-9540**, 7:30 a.m. to 4:00 p.m. ET, or e-mail: **nass@nass.usda.gov**.

The U.S. Department of Agriculture (USDA) prohibits discrimination in all its programs and activities on the basis of race, color, national origin, age, disability, and where applicable, sex, marital status, familial status, parental status, religion, sexual orientation, genetic information, political beliefs, reprisal, or because all or a part of an individual's income is derived from any public assistance program. (Not all prohibited bases apply to all programs.) Persons with disabilities who require alternative means for communication of program information (Braille, large print, audiotape, etc.) should contact USDA's TARGET Center at (202) 720-2600 (voice and TDD).

To file a complaint of discrimination, write to USDA, Director, Office of Civil Rights, 1400 Independence Avenue, S.W., Washington, D.C. 20250-9410, or call (800) 795-3272 (voice) or (202) 720-6382 (TDD). USDA is an equal opportunity provider and employer.

# **USDA Data Users' Meeting**

**October 20, 2008**

**Doubletree Hotel Chicago O'Hare Airport-Rosemont**

**Rosemont, Illinois**

**(847) 292-9100**

The USDA's National Agricultural Statistics Service will be organizing an open forum for data users. The purpose will be to provide updates on pending changes in the various statistical and information programs and seek comments and input from data users. Other USDA agencies to be represented will include the Agricultural Marketing Service, the Economic Research Service, the Foreign Agricultural Service, and World Agricultural Outlook Board. The Foreign Trade Division from the Census Bureau will also be included in the meeting.

For registration details or additional information for the Data Users' Meeting, see the NASS homepage at [www.nass.usda.gov/forum/](http://www.nass.usda.gov/forum/) or contact Marjorie Taylor (NASS) at (202) 690-8141 or at [marjorie\\_taylor@nass.usda.gov](mailto:marjorie_taylor@nass.usda.gov).

This Data Users' Meeting precedes an Industry Outlook meeting that will be held at the same location on October 21, 2008. The Outlook meeting brings together analysts from various commodity sectors to discuss the outlook situation. For registration details or additional information for the Industry Outlook Meeting see the Livestock and Marketing Information Center (LMIC) homepage at [www.lmic.info](http://www.lmic.info) or contact Jim Robb at (720) 544-2941 or at [robb@lmic.info](mailto:robb@lmic.info).