



Cattle on Feed

Released November 21, 2008, by the National Agricultural Statistics Service (NASS), Agricultural Statistics Board, U.S. Department of Agriculture. For information on *Cattle on Feed* call Jason Hardegree at (202) 720-3040, office hours 7:30 a.m. to 4:00 p.m. ET.

U.S. Cattle on Feed Down 7 Percent

Cattle and calves on feed for slaughter market in the United States for feedlots with capacity of 1,000 or more head totaled 11.0 million head on November 1, 2008. The inventory was 7 percent below November 1, 2007 and 8 percent below November 1, 2006.

Placements in feedlots during October totaled 2.44 million, 11 percent below 2007 but slightly above 2006. Net placements were 2.37 million head. During October, placements of cattle and calves weighing less than 600 pounds were 700,000, 600-699 pounds were 615,000, 700-799 pounds were 543,000, and 800 pounds and greater were 580,000.

Marketings of fed cattle during October totaled 1.81 million, 3 percent below 2007 but 3 percent above 2006.

Other disappearance totaled 67,000 during October, 43 percent above 2007 but 17 percent below 2006.

**Cattle on Feed: Number on Feed, Placements, Marketings, and
Other Disappearance, 1,000+ Capacity Feedlots,
United States, November 1, 2006-2008**

Item	Number			2008 as % of	
	2006	2007	2008	2006	2007
	<i>1,000 Head</i>	<i>1,000 Head</i>	<i>1,000 Head</i>	<i>Percent</i>	<i>Percent</i>
On Feed Oct 1 ¹	11,385	10,967	10,415	91	95
Placed on Feed During Oct	2,430	2,725	2,438	100	89
Fed Cattle Marketed During Oct	1,765	1,876	1,814	103	97
Other Disappearance During Oct ²	81	47	67	83	143
On Feed Nov 1	11,969	11,769	10,972	92	93

¹ Cattle and calves on feed are animals for slaughter market being fed a ration of grain or other concentrates and are expected to produce a carcass that will grade select or better.

² Includes death loss, movement from feedlots to pasture, and shipments to other feedlots for further feeding.

**Cattle on Feed: Number on Feed, Placements, Marketings, and
Other Disappearance, 1,000+ Capacity Feedlots,
United States, October 1, 2006-2008**

Item	Number			2008 as % of	
	2006	2007	2008	2006	2007
	<i>1,000 Head</i>	<i>1,000 Head</i>	<i>1,000 Head</i>	<i>Percent</i>	<i>Percent</i>
On Feed Sep 1 ¹	10,986	10,302	9,997	91	97
Placed on Feed During Sep	2,227	2,415	2,281	102	94
Fed Cattle Marketed During Sep	1,760	1,696	1,812	103	107
Other Disappearance During Sep ²	68	54	51	75	94
On Feed Oct 1 ¹	11,385	10,967	10,415	91	95

¹ Cattle and calves on feed are animals for slaughter market being fed a ration of grain or other concentrates and are expected to produce a carcass that will grade select or better.

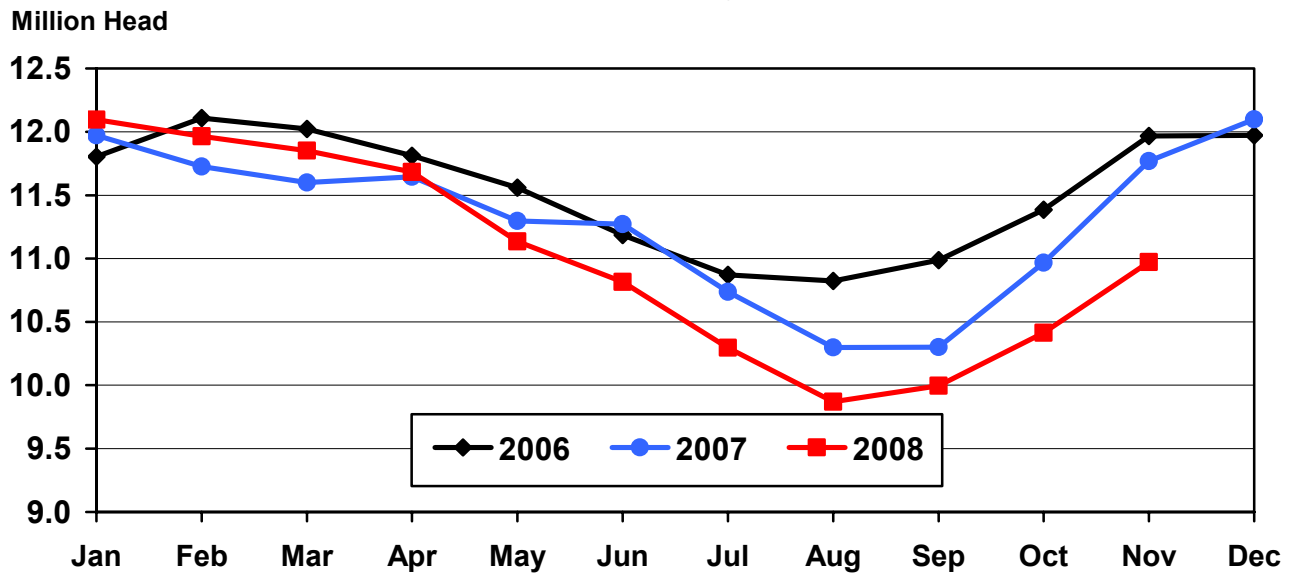
² Includes death loss, movement from feedlots to pasture, and shipments to other feedlots for further feeding.

**Cattle on Feed: Number on Feed, 1,000+ Capacity Feedlots,
by Month, State, and United States 2007-2008 ¹**

State	Nov 1, 2007	Oct 1, 2008	Nov 1, 2008		
			Number	as % of 2007	as % of Oct
	<i>1,000 Head</i>	<i>1,000 Head</i>	<i>1,000 Head</i>	<i>Percent</i>	<i>Percent</i>
AZ	360	360	362	101	101
CA	545	505	500	92	99
CO	1,030	870	960	93	110
ID	235	195	210	89	108
IA	550	475	485	88	102
KS	2,420	2,160	2,230	92	103
NE	2,400	2,110	2,310	96	109
NM	143	173	172	120	99
OK	335	315	320	96	102
SD	205	175	200	98	114
TX	3,000	2,590	2,710	90	105
WA	166	157	163	98	104
Oth Sts	380	330	350	92	106
US	11,769	10,415	10,972	93	105

¹ Cattle and calves on feed are animals for slaughter market being fed a ration of grain or other concentrates and are expected to produce a carcass that will grade select or better.

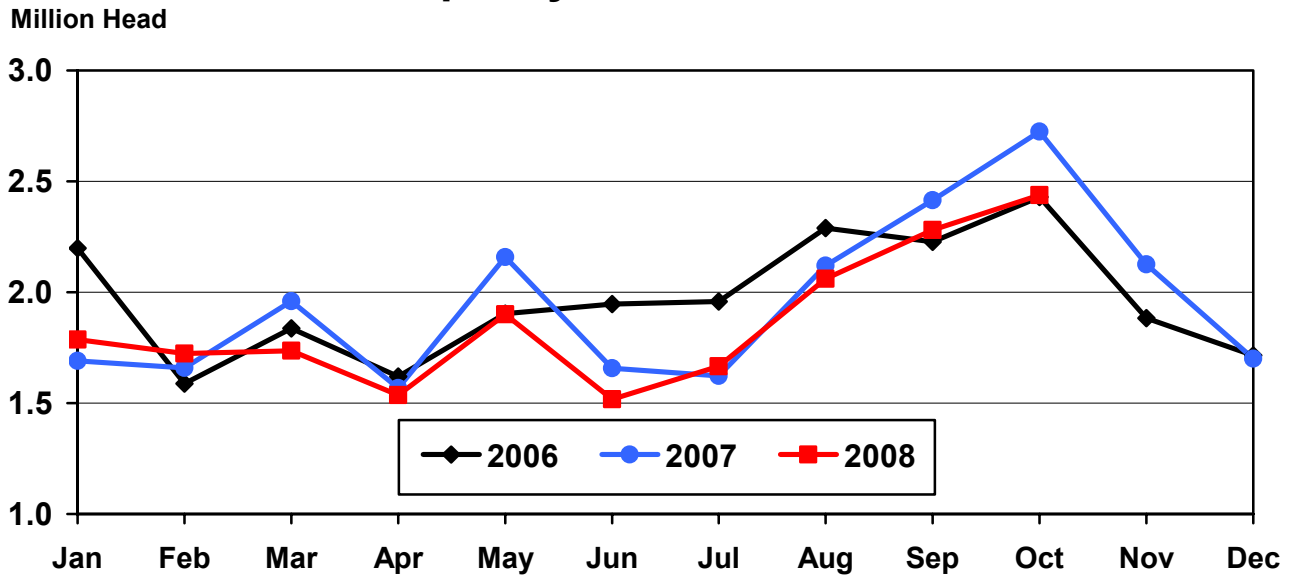
**United States Cattle on Feed
1,000+ Capacity Feedlots**



**Cattle on Feed: Number Placed on Feed, 1,000+ Capacity Feedlots,
by Month, State, and United States 2007-2008**

State	During Oct 2007	During Sep 2008	During Oct 2008		
			Number	as % of 2007	as % of Sep
	<i>1,000 Head</i>	<i>1,000 Head</i>	<i>1,000 Head</i>	<i>Percent</i>	<i>Percent</i>
AZ	39	24	31	79	129
CA	67	55	54	81	98
CO	260	255	245	94	96
ID	69	57	55	80	96
IA	120	81	104	87	128
KS	530	485	450	85	93
NE	620	550	590	95	107
NM	31	27	17	55	63
OK	74	60	75	101	125
SD	71	56	70	99	125
TX	700	510	630	90	124
WA	42	44	38	90	86
Oth Sts	102	77	79	77	103
US	2,725	2,281	2,438	89	107

**United States Cattle on Feed
1,000+ Capacity Feedlots Number Placed**



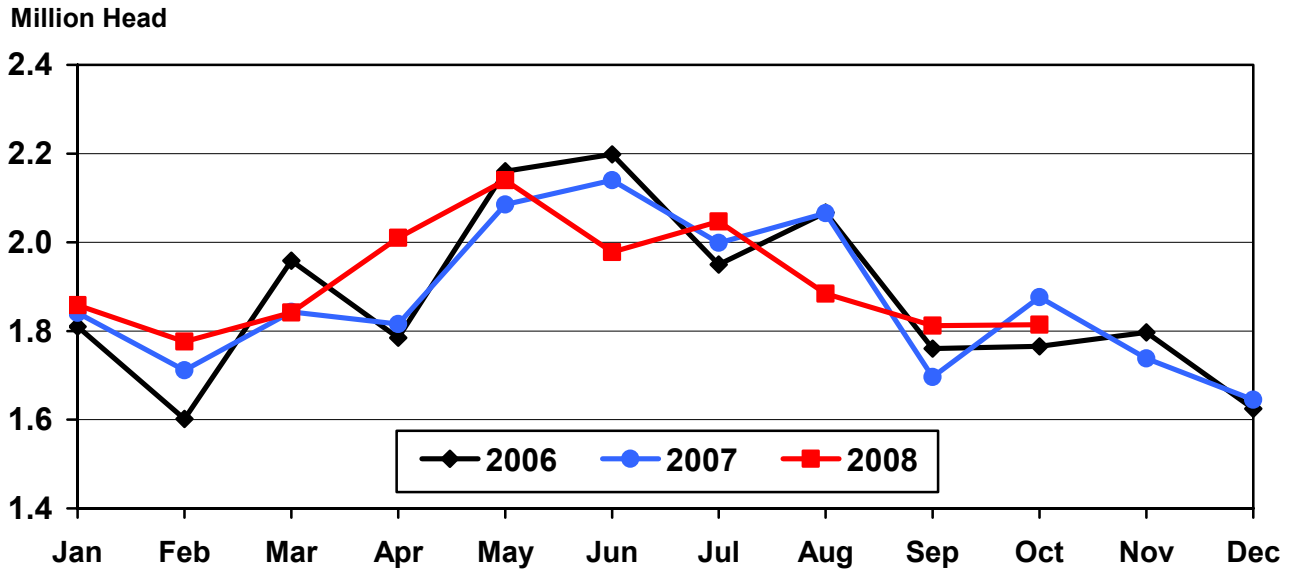
**Cattle on Feed: Number Placed on Feed by Weight Group, 1,000+ Capacity
Feedlots, by Month, State, and United States, 2007-2008**

State	During October									
	Under 600		600-699		700-799		800 Plus		Total	
	2007	2008	2007	2008	2007	2008	2007	2008	2007	2008
	<i>1,000 Head</i>	<i>1,000 Head</i>	<i>1,000 Head</i>	<i>1,000 Head</i>	<i>1,000 Head</i>	<i>1,000 Head</i>	<i>1,000 Head</i>	<i>1,000 Head</i>	<i>1,000 Head</i>	<i>1,000 Head</i>
CO	65	50	65	70	55	45	75	80	260	245
KS	175	100	135	120	125	125	95	105	530	450
NE	175	160	175	160	110	100	160	170	620	590
TX	210	195	230	160	180	190	80	85	700	630
Oth Sts	240	195	140	105	85	83	150	140	615	523
US	865	700	745	615	555	543	560	580	2,725	2,438
State	During September									
	Under 600		600-699		700-799		800 Plus		Total	
	2007	2008	2007	2008	2007	2008	2007	2008	2007	2008
	<i>1,000 Head</i>	<i>1,000 Head</i>	<i>1,000 Head</i>	<i>1,000 Head</i>	<i>1,000 Head</i>	<i>1,000 Head</i>	<i>1,000 Head</i>	<i>1,000 Head</i>	<i>1,000 Head</i>	<i>1,000 Head</i>
CO	35	20	40	30	60	45	120	160	255	255
KS	140	80	140	100	130	155	130	150	540	485
NE	100	80	80	70	120	120	240	280	540	550
TX	190	145	170	150	165	130	65	85	590	510
Oth Sts	145	120	75	65	90	91	180	205	490	481
US	610	445	505	415	565	541	735	880	2,415	2,281

**Cattle on Feed: Number Marketed, 1,000+ Capacity Feedlots,
by Month, State, and United States 2007-2008**

State	During Oct 2007	During Sep 2008	During Oct 2008		
			Number	as % of 2007	as % of Sep
	<i>1,000 Head</i>	<i>1,000 Head</i>	<i>1,000 Head</i>	<i>Percent</i>	<i>Percent</i>
AZ	27	25	28	104	112
CA	60	53	57	95	108
CO	165	150	150	91	100
ID	43	41	39	91	95
IA	79	75	93	118	124
KS	410	400	360	88	90
NE	350	390	375	107	96
NM	19	20	17	89	85
OK	63	49	68	108	139
SD	45	44	43	96	98
TX	530	490	495	93	101
WA	29	24	31	107	129
Oth Sts	56	51	58	104	114
US	1,876	1,812	1,814	97	100

United States Cattle on Feed 1,000+ Capacity Feedlots Number Marketed



**Cattle on Feed: Other Disappearance, 1,000+ Capacity Feedlots,
by Month, State, and United States 2007-2008 ¹**

State	During Oct 2007	During Sep 2008	During Oct 2008		
			Number	as % of 2007	as % of Sep
	<i>1,000 Head</i>	<i>1,000 Head</i>	<i>1,000 Head</i>	<i>Percent</i>	<i>Percent</i>
AZ	2	1	1	50	100
CA	2	2	2	100	100
CO	5	5	5	100	100
ID	1	1	1	100	100
IA	1	1	1	100	100
KS	10	15	20	200	133
NE	10	10	15	150	150
NM	2	1	1	50	100
OK	1	1	2	200	200
SD	1	2	2	200	100
TX	10	10	15	150	150
WA	1	1	1	100	100
Oth Sts	1	1	1	100	100
US	47	51	67	143	131

¹ Includes death loss, movement from feedlots to pasture, and shipments to other feedlots for further feeding.

Terms and Definitions of Cattle on Feed Estimates

Cattle on feed are animals being fed a ration of grain, silage, hay and/or protein supplement for slaughter market that are expected to produce a carcass that will grade select or better. It excludes cattle being "backgrounded only" for later sale as feeders or later placement in another feedlot.

Placements are cattle put into a feedlot, fed a ration which will produce a carcass that will grade select or better, and are intended for the slaughter market.

Marketings are cattle shipped out of feedlots to a slaughter market.

Other disappearance includes death loss, movement from feedlots to pasture, and shipments to other feedlots for further feeding.

Reliability of Cattle on Feed Estimates

Survey Procedures: During January and July all known feedlots in the U.S. with capacity of 1,000 or more head are surveyed to provide data for cattle on feed estimates. During the other months, all known feedlots from 17 States are surveyed. The 17 States account for 98 percent of the cattle on feed in feedlots with capacity of 1,000 or more head.

Estimating Procedures: These cattle on feed estimates were prepared by the Agricultural Statistics Board after reviewing recommendations and analysis submitted by each State office. Regional and State survey data were reviewed for reasonableness with each other and with estimates from the previous month when setting the current estimates.

Revision Policy: Revisions to previous estimates are made to improve month to month relationships. Estimates for the previous month are subject to revision in all States each month when current estimates are made. In February, all monthly estimates for the previous year, and the number of feedlots and annual marketings from two years ago are reviewed and subject to revisions. The reviews are primarily based on slaughter data, state check-off or brand data, and any other data that may have been received after the original estimate was made. Estimates will also be reviewed after data from the Census of Agriculture are available. No revisions will be made after that date and estimates become final.

Reliability: Since all 1,000+ capacity cattle on feed operators in every State are not included in the monthly survey, survey estimates are subject to sampling variability. Survey results are also subject to non-sampling errors such as omissions, duplications, and mistakes in reporting, recording, and processing the data. The effects of these errors cannot be measured directly. They are minimized through rigid quality controls in the data collection process and through a careful review of all reported data for consistency and reasonableness.

To assist users in evaluating the reliability of estimates in this report, the "**Root Mean Square Error**" is shown for selected items in the following table. The "Root Mean Square Error" is a statistical measure based on past performance and is computed using the differences between first and latest estimates. The "Root Mean Square Error" for cattle on feed inventory estimates over the past 24 months is less than 0.1 percent (0.04). This means that chances are 2 out of 3 that the final

estimate will not be above or below the current estimate of 11.0 million head by more than 0.04 percent. Chances are 9 out of 10 that the difference will not exceed 0.1 percent.

The following table also shows a 24 month record of the range of differences between first and latest estimates for selected items. Using estimates of number on feed as an example, changes between the first estimate and the latest estimate during the past 24 months have averaged 2,000 head, ranging from 0 to 18,000 head. During this period the initial estimate has not been above the final estimate, but has been below the final estimate 4 times. This does not imply that the initial estimate is likely to understate or overstate final inventory.

Reliability of Monthly Cattle on Feed Estimates ¹

Item	Root Mean Square Error	90% Confidence Level		Difference Between First and Final Estimates ¹			Number of Months	
		Percent	(000) Head	Average	Smallest	Largest	First Above Final	First Below Final
	<i>Percent</i>	<i>Percent</i>	<i>1,000 Head</i>	<i>1,000 Head</i>	<i>1,000 Head</i>	<i>1,000 Head</i>	<i>Number</i>	<i>Number</i>
Number on Feed	0.0	0.1	11.0	2	0	18	0	4
Placements	0.2	0.3	7.3	2	0	10	4	6
Marketings	0.2	0.3	5.4	2	0	10	5	2

¹ Based on data for the past 24 months.

Information Contacts

Listed below are the commodity specialists in the Livestock Branch of the National Agricultural Statistics Service to contact for additional information.

Dan Kerestes, Chief, Livestock Branch (202) 720-3570

Livestock Section

Scott Hollis, Head, Livestock Section (202) 690-2424
 Jim Collom - Dairy Products (202) 690-3236
 Joe Gaynor - Dairy Products Prices (202) 690-2168
 Jason Hardegree - Cattle, Cattle on Feed (202) 720-3040
 Benita Hodge - Livestock Slaughter (515) 284-4340
 Everett Olbert - Sheep and Goats (202) 720-4751
 Mike Miller - Milk Production and Milk Cows (202) 720-3278
 Nick Streff - Hogs and Pigs (202) 720-3106

ACCESS TO REPORTS!!

For your convenience, there are several ways to obtain NASS reports, data products, and services:

INTERNET ACCESS

All NASS reports are available free of charge on the worldwide Internet. For access, connect to the Internet and go to the NASS Home Page at: **www.nass.usda.gov**.

E-MAIL SUBSCRIPTION

All NASS reports are available by subscription free of charge direct to your e-mail address. Starting with the NASS Home Page at **www.nass.usda.gov**, under the right navigation, *Receive reports by Email*, click on **National** or **State**. Follow the instructions on the screen.

PRINTED REPORTS OR DATA PRODUCTS

CALL OUR TOLL-FREE ORDER DESK: 800-999-6779 (U.S. and Canada)
Other areas, please call 703-605-6220 FAX: 703-605-6900
(Visa, MasterCard, check, or money order acceptable for payment.)

ASSISTANCE

For **assistance** with general agricultural statistics or further information about NASS or its products or services, contact the **Agricultural Statistics Hotline** at **800-727-9540**, 7:30 a.m. to 4:00 p.m. ET, or e-mail: **nass@nass.usda.gov**.

The U.S. Department of Agriculture (USDA) prohibits discrimination in all its programs and activities on the basis of race, color, national origin, age, disability, and where applicable, sex, marital status, familial status, parental status, religion, sexual orientation, genetic information, political beliefs, reprisal, or because all or a part of an individual's income is derived from any public assistance program. (Not all prohibited bases apply to all programs.) Persons with disabilities who require alternative means for communication of program information (Braille, large print, audiotape, etc.) should contact USDA's TARGET Center at (202) 720-2600 (voice and TDD).

To file a complaint of discrimination, write to USDA, Director, Office of Civil Rights, 1400 Independence Avenue, S.W., Washington, D.C. 20250-9410, or call (800) 795-3272 (voice) or (202) 720-6382 (TDD). USDA is an equal opportunity provider and employer.



Global Agriculture & Rural America in Transition

Food & Energy: Expectations & Realities

February 26-27, 2009

Crystal Gateway Marriott Hotel
Arlington, Virginia

www.usda.gov/oce/forum

Early Bird Registration \$350 until January 23, 2009 * \$375 after January 23

Topical Sessions Will Address:

- *Commodity Markets
- *Trade & Farm Policy
- *Conservation
- *Risk Management
- *Food Prices
- *Rural America
- *Food Safety & Food Security
- *Energy
- *Biotechnology
- *World Markets