



Cattle on Feed

Released January 23, 2009, by the National Agricultural Statistics Service (NASS), Agricultural Statistics Board, U.S. Department of Agriculture. For information on *Cattle on Feed* call Jason Hardegree at (202) 720-3040, office hours 7:30 a.m. to 4:00 p.m. ET.

U.S. Cattle on Feed Down 7 Percent

Cattle and calves on feed for slaughter market in the United States for feedlots with capacity of 1,000 or more head totaled 11.2 million head on January 1, 2009. The inventory was 7 percent below January 1, 2008 and 6 percent below January 1, 2007. The inventory included 7.07 million steers and steer calves, down 8 percent from the previous year. This group accounted for 63 percent of the total inventory. Heifers and heifer calves accounted for 4.10 million head, down 6 percent from 2008.

Placements in feedlots during December totaled 1.65 million, 3 percent below 2007 and 4 percent below 2006. Net placements were 1.57 million head. During December, placements of cattle and calves weighing less than 600 pounds were 425,000, 600-699 pounds were 490,000, 700-799 pounds were 407,000 and 800 pounds and greater were 325,000.

Marketings of fed cattle during December totaled 1.68 million, 2 percent above 2007 and 4 percent above 2006.

Other disappearance totaled 76,000 during December, 31 percent above 2007 but 14 percent below 2006.

**Cattle on Feed: Number on Feed, Placements, Marketings, and
Other Disappearance, 1,000+ Capacity Feedlots,
United States, January 1, 2007-2009**

Item	Number			2009 as % of	
	2007	2008	2009	2007	2008
	<i>1,000 Head</i>	<i>1,000 Head</i>	<i>1,000 Head</i>	<i>Percent</i>	<i>Percent</i>
On Feed Dec 1 ^{1 2}	11,973	12,099	*11,346	95	94
Placed on Feed During Dec ²	1,714	1,701	1,647	96	97
Fed Cattle Marketed During Dec ²	1,625	1,645	1,683	104	102
Other Disappearance During Dec ^{2 3}	88	58	76	86	131
On Feed Jan 1 ¹	11,974	12,097	11,234	94	93

* Revised.

¹ Cattle and calves on feed are animals for slaughter market being fed a ration of grain or other concentrates and are expected to produce a carcass that will grade select or better.

² December preceding year.

³ Includes death loss, movement from feedlots to pasture, and shipments to other feedlots for further feeding.

**Cattle on Feed: Number on Feed, Placements, Marketings, and
Other Disappearance, 1,000+ Capacity Feedlots,
United States, December 1, 2006-2008**

Item	Number			2008 as % of	
	2006	2007	2008	2006	2007
	<i>1,000 Head</i>	<i>1,000 Head</i>	<i>1,000 Head</i>	<i>Percent</i>	<i>Percent</i>
On Feed Nov 1 ¹	11,969	11,769	10,972	92	93
Placed on Feed During Nov	1,884	2,125	*2,016	107	95
Fed Cattle Marketed During Nov	1,797	1,738	1,575	88	91
Other Disappearance During Nov ²	83	57	67	81	118
On Feed Dec 1 ¹	11,973	12,099	*11,346	95	94

* Revised.

¹ Cattle and calves on feed are animals for slaughter market being fed a ration of grain or other concentrates and are expected to produce a carcass that will grade select or better.

² Includes death loss, movement from feedlots to pasture, and shipments to other feedlots for further feeding.

**Cattle on Feed: Number on Feed by Class, 1,000+ Capacity Feedlots,
United States, January 1, 2007-2009**

Item	Number			2009 as % of	
	2007	2008	2009	2007	2008
	<i>1,000 Head</i>	<i>1,000 Head</i>	<i>1,000 Head</i>	<i>Percent</i>	<i>Percent</i>
Class on Feed Jan 1					
Steers and Steer Calves	7,574	7,646	7,071	93	92
Heifers and Heifer Calves	4,303	4,381	4,100	95	94
Cows and Bulls	97	70	63	65	90

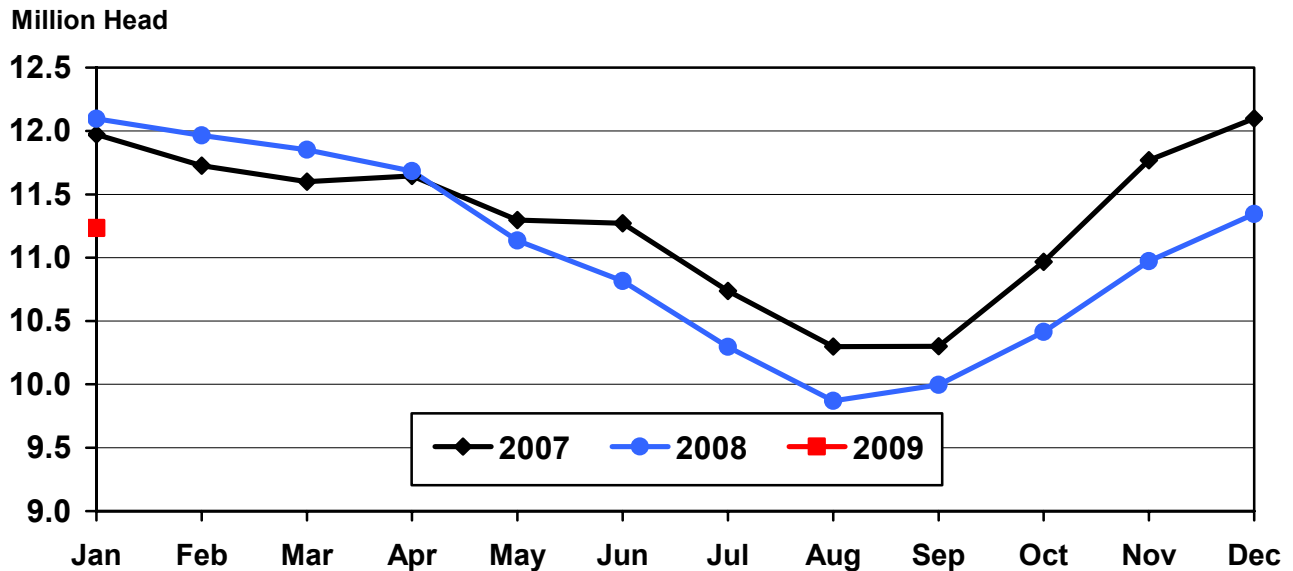
**Cattle on Feed: Number on Feed, 1,000+ Capacity Feedlots,
by Month, State, and United States 2008-2009¹**

State	Jan 1, 2008	Dec 1, 2008	Jan 1, 2009		
			Number	as % of 2008	as % of Dec
	<i>1,000 Head</i>	<i>1,000 Head</i>	<i>1,000 Head</i>	<i>Percent</i>	<i>Percent</i>
AZ	368	359	358	97	100
CA	560	495	490	88	99
CO	1,100	1,010	1,000	91	99
ID	235	225	220	94	98
IA	570	500	500	88	100
KS	2,480	2,310	2,270	92	98
NE	2,530	2,380	2,370	94	100
NM	160	*168	164	103	98
OK	350	335	335	96	100
SD	230	220	220	96	100
TX	2,960	2,810	2,790	94	99
WA	164	169	157	96	93
Oth Sts	390	365	360	92	99
US	12,097	*11,346	11,234	93	99

*Revised.

¹ Cattle and calves on feed are animals for slaughter market being fed a ration of grain or other concentrates and are expected to produce a carcass that will grade select or better.

**United States Cattle on Feed
1,000+ Capacity Feedlots**



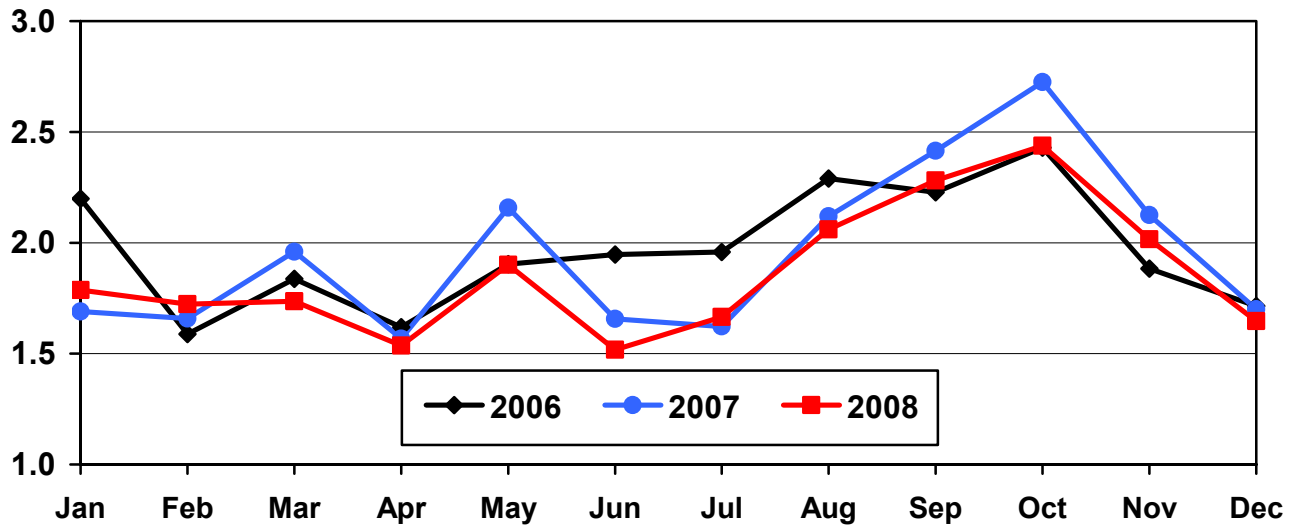
**Cattle on Feed: Number Placed on Feed, 1,000+ Capacity Feedlots,
by Month, State, and United States 2007-2008**

State	During Dec 2007	During Nov 2008	During Dec 2008		
			Number	as % of 2007	as % of Nov
	<i>1,000 Head</i>	<i>1,000 Head</i>	<i>1,000 Head</i>	<i>Percent</i>	<i>Percent</i>
AZ	26	26	29	112	112
CA	67	48	59	88	123
CO	170	185	150	88	81
ID	39	65	36	92	55
IA	71	92	66	93	72
KS	385	405	380	99	94
NE	355	440	345	97	78
NM	26	*21	16	62	76
OK	44	69	49	111	71
SD	50	57	38	76	67
TX	380	510	405	107	79
WA	25	36	28	112	78
Oth Sts	63	62	46	73	74
US	1,701	*2,016	1,647	97	82

*Revised.

**United States Cattle on Feed
1,000+ Capacity Feedlots Number Placed**

Million Head



**Cattle on Feed: Number Placed on Feed by Weight Group, 1,000+ Capacity
Feedlots, by Month, State, and United States, 2007-2008**

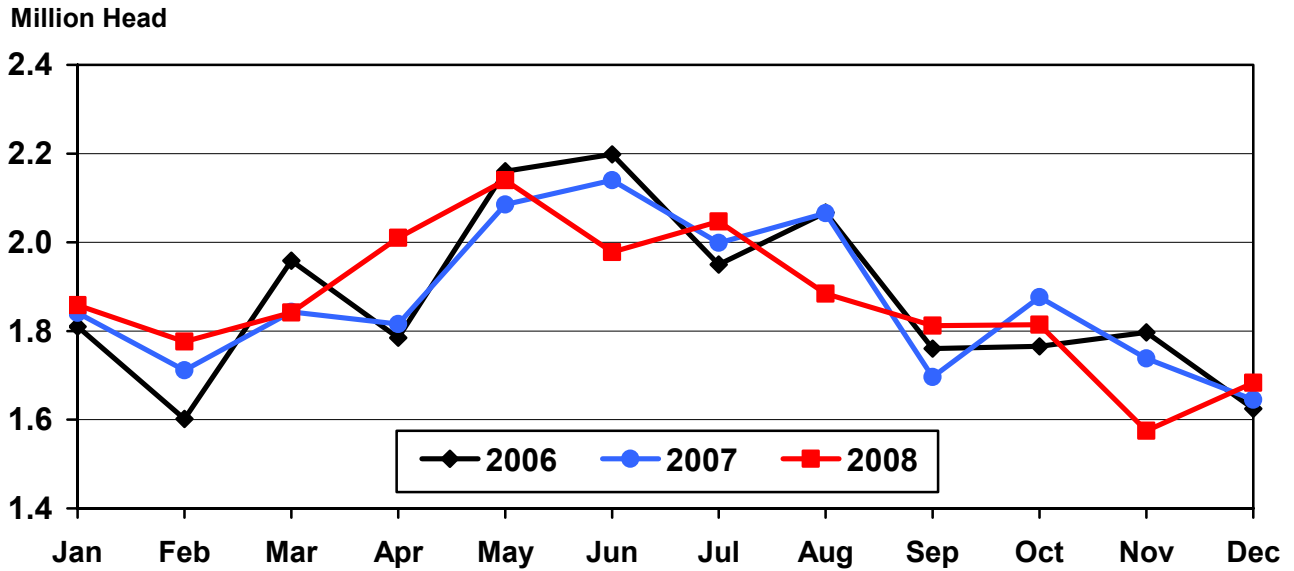
State	During December									
	Under 600		600-699		700-799		800 Plus		Total	
	2007	2008	2007	2008	2007	2008	2007	2008	2007	2008
	<i>1,000 Head</i>	<i>1,000 Head</i>	<i>1,000 Head</i>	<i>1,000 Head</i>	<i>1,000 Head</i>	<i>1,000 Head</i>	<i>1,000 Head</i>	<i>1,000 Head</i>	<i>1,000 Head</i>	<i>1,000 Head</i>
CO	30	25	55	45	50	40	35	40	170	150
KS	80	70	120	120	120	120	65	70	385	380
NE	65	55	100	100	100	100	90	90	355	345
TX	145	140	125	135	80	90	30	40	380	405
Oth Sts	160	135	105	90	70	57	76	85	411	367
US	480	425	505	490	420	407	296	325	1,701	1,647
	During November									
	Under 600		600-699		700-799		800 Plus		Total	
	2007	2008	2007	2008	2007	2008	2007	2008	2007	2008
	<i>1,000 Head</i>	<i>1,000 Head</i>	<i>1,000 Head</i>	<i>1,000 Head</i>	<i>1,000 Head</i>	<i>1,000 Head</i>	<i>1,000 Head</i>	<i>1,000 Head</i>	<i>1,000 Head</i>	<i>1,000 Head</i>
CO	55	50	60	55	35	40	40	40	190	185
KS	140	85	135	125	100	120	75	75	450	405
NE	120	110	170	160	100	80	95	90	485	440
TX	180	145	165	180	110	130	55	55	510	510
Oth Sts	190	175	130	110	75	*81	95	110	490	*476
US	685	565	660	630	420	*451	360	370	2,125	*2,016

* Revised.

**Cattle on Feed: Number Marketed, 1,000+ Capacity Feedlots,
by Month, State, and United States 2007-2008**

State	During Dec 2007	During Nov 2008	During Dec 2008		
			Number	as % of 2007	as % of Nov
	<i>1,000 Head</i>	<i>1,000 Head</i>	<i>1,000 Head</i>	<i>Percent</i>	<i>Percent</i>
AZ	24	28	29	121	104
CA	60	50	60	100	120
CO	135	130	155	115	119
ID	42	49	39	93	80
IA	69	75	64	93	85
KS	390	310	405	104	131
NE	335	355	340	101	96
NM	13	23	18	138	78
OK	37	52	46	124	88
SD	33	35	37	112	106
TX	420	395	405	96	103
WA	28	29	38	136	131
Oth Sts	59	44	47	80	107
US	1,645	1,575	1,683	102	107

United States Cattle on Feed 1,000+ Capacity Feedlots Number Marketed



**Cattle on Feed: Other Disappearance, 1,000+ Capacity Feedlots,
by Month, State, and United States 2007-2008¹**

State	During Dec 2007	During Nov 2008	During Dec 2008		
			Number	as % of 2007	as % of Nov
	<i>1,000 Head</i>	<i>1,000 Head</i>	<i>1,000 Head</i>	<i>Percent</i>	<i>Percent</i>
AZ	1	1	1	100	100
CA	2	3	4	200	133
CO	5	5	5	100	100
ID	2	1	2	100	200
IA	2	2	2	100	100
KS	15	15	15	100	100
NE	10	15	15	150	100
NM	2	2	2	100	100
OK	2	2	3	150	150
SD	2	2	1	50	50
TX	10	15	20	200	133
WA	1	1	2	200	200
Oth Sts	4	3	4	100	133
US	58	67	76	131	113

¹ Includes death loss, movement from feedlots to pasture, and shipments to other feedlots for further feeding.

**Cattle on Feed: Number on Feed by Class, 1,000+ Capacity Feedlots,
by Quarter, State, and United States, 2008-2009**

State	Steers & Steer Calves			Heifers & Heifer Calves			Cows and Bulls		
	Jan 1, 2008	Oct 1, 2008	Jan 1, 2009	Jan 1, 2008	Oct 1, 2008	Jan 1, 2009	Jan 1, 2008	Oct 1, 2008	Jan 1, 2009
	<i>1,000 Head</i>	<i>1,000 Head</i>	<i>1,000 Head</i>	<i>1,000 Head</i>	<i>1,000 Head</i>	<i>1,000 Head</i>	<i>1,000 Head</i>	<i>1,000 Head</i>	<i>1,000 Head</i>
AZ	365	359	357	3	1	1	0	0	0
CA	500	455	440	60	50	50	0	0	0
CO	670	515	610	425	350	385	5	5	5
ID	127	101	118	98	89	97	10	5	5
IA	390	345	345	179	130	155	1	0	0
KS	1,350	1,225	1,210	1,120	920	1,045	10	15	15
NE	1,550	1,200	1,460	970	900	900	10	10	10
NM	90	77	89	70	96	75	0	0	0
OK	240	225	215	110	90	120	0	0	0
SD	111	82	107	90	78	92	29	15	21
TX	1,880	1,590	1,770	1,077	998	1,018	3	2	2
WA	88	84	95	75	72	61	1	1	1
Oth Sts	285	255	255	104	74	101	1	1	4
US	7,646	6,513	7,071	4,381	3,848	4,100	70	54	63

Terms and Definitions of Cattle on Feed Estimates

Cattle on feed are animals being fed a ration of grain, silage, hay and/or protein supplement for slaughter market that are expected to produce a carcass that will grade select or better. It excludes cattle being "backgrounded only" for later sale as feeders or later placement in another feedlot.

Placements are cattle put into a feedlot, fed a ration which will produce a carcass that will grade select or better, and are intended for the slaughter market.

Marketings are cattle shipped out of feedlots to a slaughter market.

Other disappearance includes death loss, movement from feedlots to pasture, and shipments to other feedlots for further feeding.

Reliability of Cattle on Feed Estimates

Survey Procedures: During January and July all known feedlots in the U.S. with capacity of 1,000 or more head are surveyed to provide data for cattle on feed estimates. During the other months, all known feedlots from 17 States are surveyed. The 17 States account for 98 percent of the cattle on feed in feedlots with capacity of 1,000 or more head.

Estimating Procedures: These cattle on feed estimates were prepared by the Agricultural Statistics Board after reviewing recommendations and analysis submitted by each State office. Regional and State survey data were reviewed for reasonableness with each other and with estimates from the previous month when setting the current estimates.

Revision Policy: Revisions to previous estimates are made to improve month to month relationships. Estimates for the previous month are subject to revision in all States each month when current estimates are made. In February, all monthly estimates for the previous year, and the number of feedlots and annual marketings from two years ago are reviewed and subject to revisions. The reviews are primarily based on slaughter data, state check-off or brand data, and any other data that may have been received after the original estimate was made. Estimates will also be reviewed after data from the Census of Agriculture are available. No revisions will be made after that date and estimates become final.

Reliability: Since all 1,000+ capacity cattle on feed operators in every State are not included in the monthly survey, survey estimates are subject to sampling variability. Survey results are also subject to non-sampling errors such as omissions, duplications, and mistakes in reporting, recording, and processing the data. The effects of these errors cannot be measured directly. They are minimized through rigid quality controls in the data collection process and through a careful review of all reported data for consistency and reasonableness.

To assist users in evaluating the reliability of estimates in this report, the "**Root Mean Square Error**" is shown for selected items in the following table. The "Root Mean Square Error" is a statistical measure based on past performance and is computed using the differences between first and latest estimates. The "Root Mean Square Error" for cattle on feed inventory estimates over the past 24 months is less than 0.1 percent (0.03). This means that chances are 2 out of 3 that the final

estimate will not be above or below the current estimate of 11.2 million head by more than 0.03 percent. Chances are 9 out of 10 that the difference will not exceed 0.1 percent.

The following table also shows a 24 month record of the range of differences between first and latest estimates for selected items. Using estimates of number on feed as an example, changes between the first estimate and the latest estimate during the past 24 months have averaged 1,000 head, ranging from 0 to 18,000 head. During this period the initial estimate has not been above the final estimate, but has been below the final estimate 4 times. This does not imply that the initial estimate is likely to understate or overstate final inventory.

Reliability of Monthly Cattle on Feed Estimates ¹

Item	Root Mean Square Error	90% Confidence Level		Difference Between First and Final Estimates ¹			Number of Months	
		Percent	(000) Head	Average	Smallest	Largest	First Above Final	First Below Final
	<i>Percent</i>	<i>Percent</i>	<i>1,000 Head</i>	<i>1,000 Head</i>	<i>1,000 Head</i>	<i>1,000 Head</i>	<i>Number</i>	<i>Number</i>
Number on Feed	0.0	0.1	11.2	1	0	18	0	4
Placements	0.2	0.3	4.9	2	0	10	3	6
Marketings	0.2	0.3	5.0	1	0	10	3	2

¹ Based on data for the past 24 months.

Information Contacts

Listed below are the commodity specialists in the Livestock Branch of the National Agricultural Statistics Service to contact for additional information.

Dan Kerestes, Chief, Livestock Branch (202) 720-3570

Livestock Section

Scott Hollis, Head, Livestock Section (202) 690-2424
 Jim Collom - Dairy Products (202) 690-3236
 Joe Gaynor - Dairy Products Prices (202) 690-2168
 Jason Hardegree - Cattle, Cattle on Feed (202) 720-3040
 Sherry Bertramsen - Livestock Slaughter (515) 284-4340
 Everett Olbert - Sheep and Goats (202) 720-4751
 Mike Miller - Milk Production and Milk Cows (202) 720-3278
 Nick Streff - Hogs and Pigs (202) 720-3106

ACCESS TO REPORTS!!

For your convenience, there are several ways to obtain NASS reports, data products, and services:

INTERNET ACCESS

All NASS reports are available free of charge on the worldwide Internet. For access, connect to the Internet and go to the NASS Home Page at: www.nass.usda.gov.

E-MAIL SUBSCRIPTION

All NASS reports are available by subscription free of charge direct to your e-mail address. Starting with the NASS Home Page at www.nass.usda.gov, under the right navigation, *Receive reports by Email*, click on **National** or **State**. Follow the instructions on the screen.

PRINTED REPORTS OR DATA PRODUCTS

CALL OUR TOLL-FREE ORDER DESK: 800-999-6779 (U.S. and Canada)
Other areas, please call 703-605-6220 FAX: 703-605-6900
(Visa, MasterCard, check, or money order acceptable for payment.)

ASSISTANCE

For **assistance** with general agricultural statistics or further information about NASS or its products or services, contact the **Agricultural Statistics Hotline** at **800-727-9540**, 7:30 a.m. to 4:00 p.m. ET, or e-mail: nass@nass.usda.gov.

The U.S. Department of Agriculture (USDA) prohibits discrimination in all its programs and activities on the basis of race, color, national origin, age, disability, and where applicable, sex, marital status, familial status, parental status, religion, sexual orientation, genetic information, political beliefs, reprisal, or because all or a part of an individual's income is derived from any public assistance program. (Not all prohibited bases apply to all programs.) Persons with disabilities who require alternative means for communication of program information (Braille, large print, audiotape, etc.) should contact USDA's TARGET Center at (202) 720-2600 (voice and TDD).

To file a complaint of discrimination, write to USDA, Director, Office of Civil Rights, 1400 Independence Avenue, S.W., Washington, D.C. 20250-9410, or call (800) 795-3272 (voice) or (202) 720-6382 (TDD). USDA is an equal opportunity provider and employer.



Global Agriculture & Rural America in Transition

Food & Energy: Expectations & Realities

February 26-27, 2009

Crystal Gateway Marriott Hotel
Arlington, Virginia

www.usda.gov/oce/forum

Early Bird Registration \$350 until January 23, 2009 * \$375 after January 23

Topical Sessions Will Address:

- *Commodity Markets
- *Trade & Farm Policy
- *Conservation
- *Risk Management
- *Food Prices
- *Rural America
- *Food Safety & Food Security
- *Energy
- *Biotechnology
- *World Markets