



# Cattle on Feed

---

Released March 20, 2009, by the National Agricultural Statistics Service (NASS), Agricultural Statistics Board, U.S. Department of Agriculture. For information on *Cattle on Feed* call Jason Hardegree at (202) 720-3040, office hours 7:30 a.m. to 4:00 p.m. ET.

## U.S. Cattle on Feed Down 5 Percent

**Cattle and calves on feed** for slaughter market in the United States for feedlots with capacity of 1,000 or more head totaled 11.2 million head on March 1, 2009. The inventory was 5 percent below March 1, 2008.

**Placements** in feedlots during February totaled 1.68 million, 3 percent below 2008. Net placements were 1.62 million head. During February, placements of cattle and calves weighing less than 600 pounds were 320,000, 600-699 pounds were 385,000, 700-799 pounds were 538,000, and 800 pounds and greater were 435,000.

**Marketings** of fed cattle during February totaled 1.68 million, 5 percent below 2008.

**Other disappearance** totaled 56,000 during February, 7 percent below 2008. This is the lowest other disappearance for the month of February since the series began in 1996.

**Cattle on Feed: Number on Feed, Placements, Marketings, and  
Other Disappearance, 1,000+ Capacity Feedlots,  
United States, March 1, 2008-2009**

Item	Number		2009 as %
	2008	2009	of 2008
	<i>1,000 Head</i>	<i>1,000 Head</i>	<i>Percent</i>
On Feed Feb 1	11,966	11,288	94
Placed on Feed During Feb	1,723	1,678	97
Fed Cattle Marketed During Feb	1,776	1,682	95
Other Disappearance During Feb	60	56	93
On Feed Mar 1	11,853	11,228	95

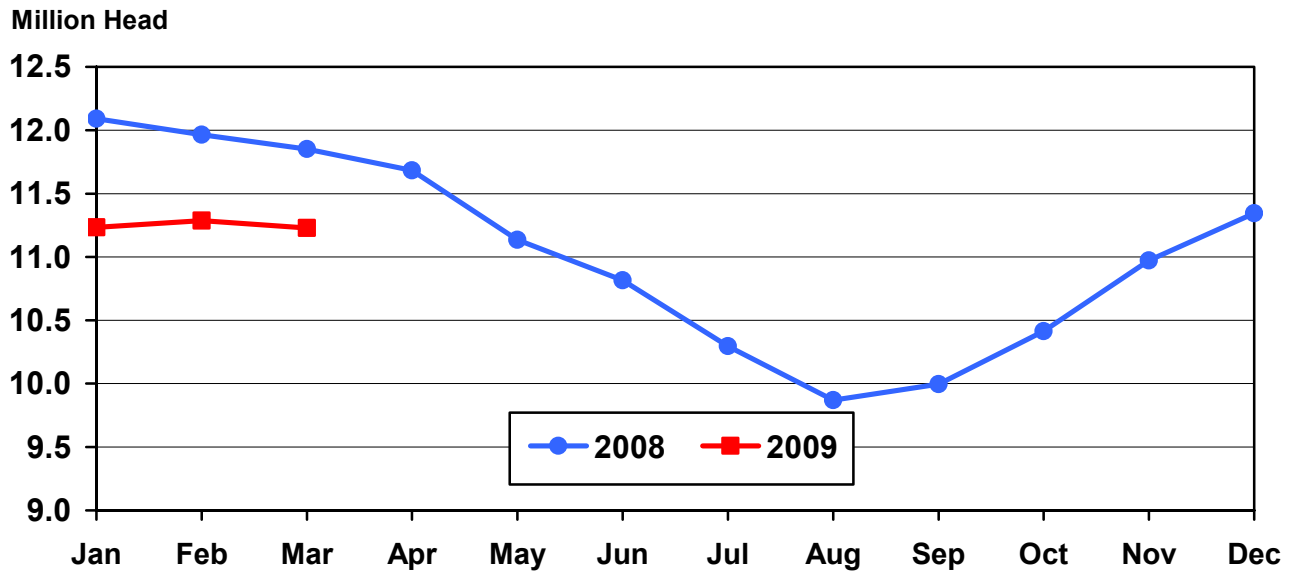
**Cattle on Feed: Number on Feed, Placements, Marketings, and  
Other Disappearance, 1,000+ Capacity Feedlots,  
United States, February 1, 2008-2009**

Item	Number		2009 as %
	2008	2009	of 2008
	<i>1,000 Head</i>	<i>1,000 Head</i>	<i>Percent</i>
On Feed Jan 1	12,092	11,234	93
Placed on Feed During Jan	1,787	1,858	104
Fed Cattle Marketed During Jan	1,853	1,737	94
Other Disappearance During Jan	60	67	112
On Feed Feb 1	11,966	11,288	94

**Cattle on Feed: Number on Feed, 1,000+ Capacity Feedlots,  
by Month, State, and United States 2008-2009**

State	Mar 1, 2008	Feb 1, 2009	Mar 1, 2009		
			Number	as % of 2008	as % of Feb
	<i>1,000 Head</i>	<i>1,000 Head</i>	<i>1,000 Head</i>	<i>Percent</i>	<i>Percent</i>
AZ	377	349	342	91	98
CA	545	480	460	84	96
CO	1,050	1,020	1,040	99	102
ID	235	215	215	91	100
IA	560	520	520	93	100
KS	2,410	2,260	2,290	95	101
NE	2,490	2,400	2,330	94	97
NM	160	158	148	93	94
OK	350	330	330	94	100
SD	235	225	225	96	100
TX	2,920	2,810	2,820	97	100
WA	151	151	153	101	101
Oth Sts	370	370	355	96	96
US	11,853	11,288	11,228	95	99

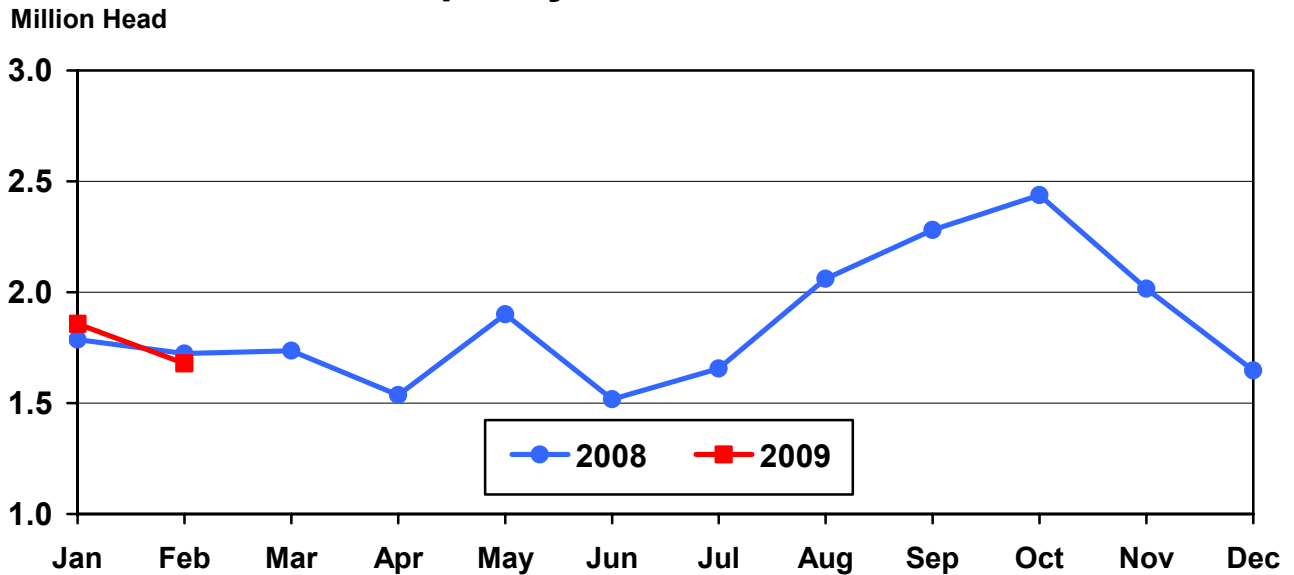
**United States Cattle on Feed  
1,000+ Capacity Feedlots**



**Cattle on Feed: Number Placed on Feed, 1,000+ Capacity Feedlots,  
by Month, State, and United States 2008-2009**

State	During Feb 2008	During Jan 2009	During Feb 2009		
			Number	as % of 2008	as % of Jan
	<i>1,000 Head</i>	<i>1,000 Head</i>	<i>1,000 Head</i>	<i>Percent</i>	<i>Percent</i>
AZ	36	27	26	72	96
CA	60	51	36	60	71
CO	155	200	190	123	95
ID	39	37	38	97	103
IA	62	81	62	100	77
KS	390	435	420	108	97
NE	350	400	310	89	78
NM	15	9	9	60	100
OK	45	54	51	113	94
SD	47	43	43	91	100
TX	440	440	430	98	98
WA	30	30	28	93	93
Oth Sts	54	51	35	65	69
US	1,723	1,858	1,678	97	90

**United States Cattle on Feed  
1,000+ Capacity Feedlots Number Placed**



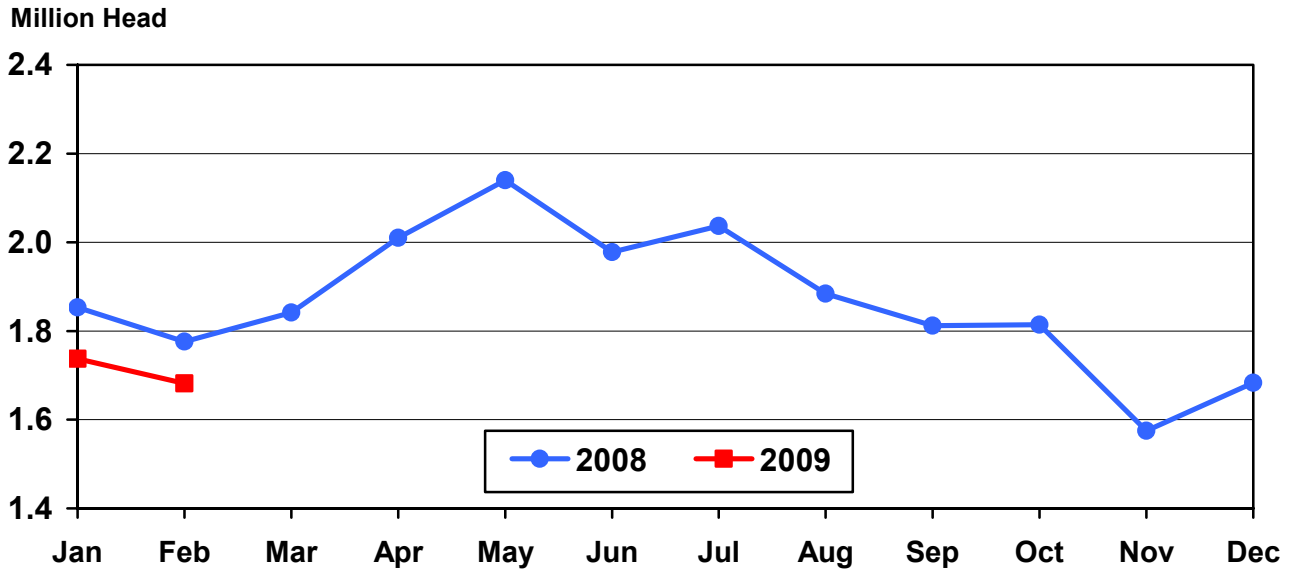
**Cattle on Feed: Number Placed on Feed by Weight Group, 1,000+ Capacity  
Feedlots, by Month, State, and United States, 2008-2009**

State	During February									
	Under 600		600-699		700-799		800 Plus		Total	
	2008	2009	2008	2009	2008	2009	2008	2009	2008	2009
	<i>1,000 Head</i>	<i>1,000 Head</i>	<i>1,000 Head</i>	<i>1,000 Head</i>	<i>1,000 Head</i>	<i>1,000 Head</i>	<i>1,000 Head</i>	<i>1,000 Head</i>	<i>1,000 Head</i>	<i>1,000 Head</i>
CO	10	20	35	45	50	55	60	70	155	190
KS	40	50	85	95	160	165	105	110	390	420
NE	40	50	70	60	110	100	130	100	350	310
TX	120	100	125	115	125	140	70	75	440	430
Oth Sts	120	100	70	70	88	78	110	80	388	328
US	330	320	385	385	533	538	475	435	1,723	1,678
State	During January									
	Under 600		600-699		700-799		800 Plus		Total	
	2008	2009	2008	2009	2008	2009	2008	2009	2008	2009
	<i>1,000 Head</i>	<i>1,000 Head</i>	<i>1,000 Head</i>	<i>1,000 Head</i>	<i>1,000 Head</i>	<i>1,000 Head</i>	<i>1,000 Head</i>	<i>1,000 Head</i>	<i>1,000 Head</i>	<i>1,000 Head</i>
CO	20	20	45	55	55	55	60	70	180	200
KS	55	60	120	130	140	160	90	85	405	435
NE	50	65	90	95	125	130	115	110	380	400
TX	135	105	125	135	110	135	30	65	400	440
Oth Sts	140	130	87	90	95	73	100	90	422	383
US	400	380	467	505	525	553	395	420	1,787	1,858

**Cattle on Feed: Number Marketed, 1,000+ Capacity Feedlots,  
by Month, State, and United States 2008-2009**

State	During Feb 2008	During Jan 2009	During Feb 2009		
			Number	as % of 2008	as % of Jan
	<i>1,000 Head</i>	<i>1,000 Head</i>	<i>1,000 Head</i>	<i>Percent</i>	<i>Percent</i>
AZ	30	35	32	107	91
CA	63	59	54	86	92
CO	190	170	165	87	97
ID	38	41	37	97	90
IA	69	59	61	88	103
KS	400	430	375	94	87
NE	360	360	370	103	103
NM	14	13	18	129	138
OK	48	57	49	102	86
SD	40	35	39	98	111
TX	440	405	410	93	101
WA	30	35	25	83	71
Oth Sts	54	38	47	87	124
US	1,776	1,737	1,682	95	97

## United States Cattle on Feed 1,000+ Capacity Feedlots Number Marketed



**Cattle on Feed: Other Disappearance, 1,000+ Capacity Feedlots,  
by Month, State, and United States 2008-2009**

State	During Feb 2008	During Jan 2009	During Feb 2009		
			Number	as % of 2008	as % of Jan
	<i>1,000 Head</i>	<i>1,000 Head</i>	<i>1,000 Head</i>	<i>Percent</i>	<i>Percent</i>
AZ	2	1	1	50	100
CA	7	2	2	29	100
CO	5	10	5	100	50
ID	1	1	1	100	100
IA	3	2	1	33	50
KS	10	15	15	150	100
NE	10	10	10	100	100
NM	1	2	1	100	50
OK	2	2	2	100	100
SD	2	3	4	200	133
TX	10	15	10	100	67
WA	2	1	1	50	100
Oth Sts	5	3	3	60	100
US	60	67	56	93	84

## Terms and Definitions of Cattle on Feed Estimates

**Cattle on feed** are animals being fed a ration of grain, silage, hay and/or protein supplement for slaughter market that are expected to produce a carcass that will grade select or better. It excludes cattle being "backgrounded only" for later sale as feeders or later placement in another feedlot.

**Placements** are cattle put into a feedlot, fed a ration which will produce a carcass that will grade select or better, and are intended for the slaughter market.

**Marketings** are cattle shipped out of feedlots to a slaughter market.

**Other disappearance** includes death loss, movement from feedlots to pasture, and shipments to other feedlots for further feeding.

## Reliability of Cattle on Feed Estimates

**Survey Procedures:** During January and July all known feedlots in the U.S. with capacity of 1,000 or more head are surveyed to provide data for cattle on feed estimates. During the other months, all known feedlots from 17 States are surveyed. The 17 States account for 98 percent of the cattle on feed in feedlots with capacity of 1,000 or more head.

**Estimating Procedures:** These cattle on feed estimates were prepared by the Agricultural Statistics Board after reviewing recommendations and analysis submitted by each State office. Regional and State survey data were reviewed for reasonableness with each other and with estimates from the previous month when setting the current estimates.

**Revision Policy:** Revisions to previous estimates are made to improve month to month relationships. Estimates for the previous month are subject to revision in all States each month when current estimates are made. In February, all monthly estimates for the previous year, and the number of feedlots and annual marketings from two years ago are reviewed and subject to revisions. The reviews are primarily based on slaughter data, state check-off or brand data, and any other data that may have been received after the original estimate was made. Estimates will also be reviewed after data from the Census of Agriculture are available. No revisions will be made after that date and estimates become final.

**Reliability:** Since all 1,000+ capacity cattle on feed operators in every State are not included in the monthly survey, survey estimates are subject to sampling variability. Survey results are also subject to non-sampling errors such as omissions, duplications, and mistakes in reporting, recording, and processing the data. The effects of these errors cannot be measured directly. They are minimized through rigid quality controls in the data collection process and through a careful review of all reported data for consistency and reasonableness.

To assist users in evaluating the reliability of estimates in this report, the "**Root Mean Square Error**" is shown for selected items in the following table. The "Root Mean Square Error" is a statistical measure based on past performance and is computed using the differences between first and latest estimates. The "Root Mean Square Error" for cattle on feed inventory estimates over the past 24 months is less than 0.1 percent (0.04). This means that chances are 2 out of 3 that the final estimate will not be above or below the current estimate of 11.2 million head by more than 0.04 percent. Chances are 9 out of 10 that the difference will not exceed 0.1 percent.

The following table also shows a 24 month record of the range of differences between first and latest estimates for selected items. Using estimates of number on feed as an example, changes between the first estimate and the latest estimate during the past 24 months have averaged 1,000 head, ranging from 0 to 18,000 head. During this period the initial estimate has been above the final estimate one time and has been below the final estimate four times. This does not imply that the initial estimate is likely to understate or overstate final inventory.

**Reliability of Monthly Cattle on Feed Estimates <sup>1</sup>**

Item	Root Mean Square Error	90% Confidence Level		Difference Between First and Final Estimates			Number of Months	
		Percent	(000) Head	Average	Smallest	Largest	First Above Final	First Below Final
	<i>Percent</i>	<i>Percent</i>	<i>1,000 Head</i>	<i>1,000 Head</i>	<i>1,000 Head</i>	<i>1,000 Head</i>	<i>Number</i>	<i>Number</i>
Number on Feed	0.0	0.1	11.2	1	0	18	1	4
Placements	0.2	0.3	5.0	2	0	10	4	5
Marketings	0.2	0.3	5.0	2	0	10	5	2

<sup>1</sup> Based on data for the past 24 months.

### Information Contacts

Listed below are the commodity specialists in the Livestock Branch of the National Agricultural Statistics Service to contact for additional information.

Dan Kerestes, Chief, Livestock Branch ..... (202) 720-3570

#### Livestock Section

Scott Hollis, Head, Livestock Section ..... (202) 690-2424  
 Jim Collom - Dairy Products ..... (202) 690-3236  
 Joe Gaynor - Dairy Products Prices ..... (202) 690-2168  
 Jason Hardegree - Cattle, Cattle on Feed ..... (202) 720-3040  
 Sherry Bertramsen - Livestock Slaughter ..... (515) 284-4340  
 Everett Olbert - Sheep and Goats ..... (202) 720-4751  
 Mike Miller - Milk Production and Milk Cows ..... (202) 720-3278  
 Nick Streff - Hogs and Pigs ..... (202) 720-3106



## ACCESS TO REPORTS!!

---

For your convenience, there are several ways to obtain NASS reports, data products, and services:

### INTERNET ACCESS

All NASS reports are available free of charge on the worldwide Internet. For access, connect to the Internet and go to the NASS Home Page at: **www.nass.usda.gov**.

### E-MAIL SUBSCRIPTION

All NASS reports are available by subscription free of charge direct to your e-mail address. Starting with the NASS Home Page at **www.nass.usda.gov**, under the right navigation, *Receive reports by Email*, click on **National** or **State**. Follow the instructions on the screen.

-----

### PRINTED REPORTS OR DATA PRODUCTS

**CALL OUR TOLL-FREE ORDER DESK: 800-999-6779 (U.S. and Canada)**  
**Other areas, please call 703-605-6220      FAX: 703-605-6900**  
**(Visa, MasterCard, check, or money order acceptable for payment.)**

-----

### ASSISTANCE

For **assistance** with general agricultural statistics or further information about NASS or its products or services, contact the **Agricultural Statistics Hotline** at **800-727-9540**, 7:30 a.m. to 4:00 p.m. ET, or e-mail: **nass@nass.usda.gov**.

The U.S. Department of Agriculture (USDA) prohibits discrimination in all its programs and activities on the basis of race, color, national origin, age, disability, and where applicable, sex, marital status, familial status, parental status, religion, sexual orientation, genetic information, political beliefs, reprisal, or because all or a part of an individual's income is derived from any public assistance program. (Not all prohibited bases apply to all programs.) Persons with disabilities who require alternative means for communication of program information (Braille, large print, audiotape, etc.) should contact USDA's TARGET Center at (202) 720-2600 (voice and TDD).

To file a complaint of discrimination, write to USDA, Director, Office of Civil Rights, 1400 Independence Avenue, S.W., Washington, D.C. 20250-9410, or call (800) 795-3272 (voice) or (202) 720-6382 (TDD). USDA is an equal opportunity provider and employer.