



# Cattle on Feed

---

Released April 17, 2009, by the National Agricultural Statistics Service (NASS), Agricultural Statistics Board, U.S. Department of Agriculture. For information on *Cattle on Feed* call Jason Hardegree at (202) 720-3040, office hours 7:30 a.m. to 4:00 p.m. ET.

## U.S. Cattle on Feed Down 5 Percent

**Cattle and calves on feed** for slaughter market in the United States for feedlots with capacity of 1,000 or more head totaled 11.2 million head on April 1, 2009. The inventory was 5 percent below April 1, 2008. The inventory included 6.98 million steers and steer calves, down 5 percent from the previous year. This group accounted for 63 percent of the total inventory. Heifers and heifer calves accounted for 4.12 million head, down 4 percent from 2008.

**Placements** in feedlots during March totaled 1.80 million, 4 percent above 2008. Net placements were 1.75 million head. During March, placements of cattle and calves weighing less than 600 pounds were 300,000, 600-699 pounds were 340,000, 700-799 pounds were 592,000 and 800 pounds and greater were 570,000.

**Marketings** of fed cattle during March totaled 1.83 million, 1 percent below 2008.

**Other disappearance** totaled 50,000 during March, 21 percent below 2008. This is the lowest other disappearance for the month of March since the series began in 1996.

**Cattle on Feed: Number on Feed, Placements, Marketings, and  
Other Disappearance, 1,000+ Capacity Feedlots,  
United States, April 1, 2008-2009**

Item	Number		2009 as %
	2008	2009	of 2008
	<i>1,000 Head</i>	<i>1,000 Head</i>	<i>Percent</i>
On Feed Mar 1	11,853	11,228	95
Placed on Feed During Mar	1,736	1,802	104
Fed Cattle Marketed During Mar	1,842	1,828	99
Other Disappearance During Mar	63	50	79
On Feed Apr 1	11,684	11,152	95

**Cattle on Feed: Number on Feed, Placements, Marketings, and  
Other Disappearance, 1,000+ Capacity Feedlots,  
United States, March 1, 2008-2009**

Item	Number		2009 as %
	2008	2009	of 2008
	<i>1,000 Head</i>	<i>1,000 Head</i>	<i>Percent</i>
On Feed Feb 1	11,966	11,288	94
Placed on Feed During Feb	1,723	1,678	97
Fed Cattle Marketed During Feb	1,776	1,682	95
Other Disappearance During Feb	60	56	93
On Feed Mar 1	11,853	11,228	95

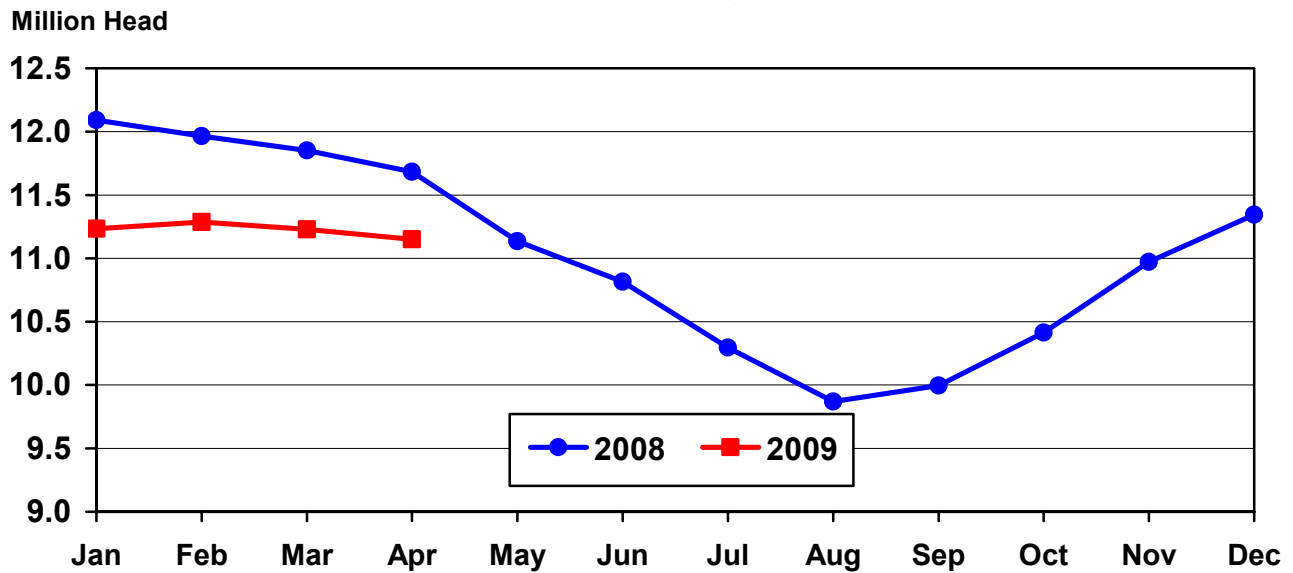
**Cattle on Feed: Number on Feed by Class, 1,000+ Capacity Feedlots,  
United States, April 1, 2008-2009**

Item	Number		2009 as % of
	2008	2009	2008
	<i>1,000 Head</i>	<i>1,000 Head</i>	<i>Percent</i>
Class on Feed Apr 1			
Steers and Steer Calves	7,347	6,979	95
Heifers and Heifer Calves	4,276	4,122	96
Cows and Bulls	61	51	84

**Cattle on Feed: Number on Feed, 1,000+ Capacity Feedlots,  
by Month, State, and United States 2008-2009**

State	Apr 1, 2008	Mar 1, 2009	Apr 1, 2009		
			Number	as % of 2008	as % of Mar
	<i>1,000 Head</i>	<i>1,000 Head</i>	<i>1,000 Head</i>	<i>Percent</i>	<i>Percent</i>
AZ	374	342	330	88	96
CA	530	460	445	84	97
CO	1,020	1,040	1,040	102	100
ID	230	215	210	91	98
IA	550	520	520	95	100
KS	2,420	2,290	2,280	94	100
NE	2,450	2,330	2,320	95	100
NM	158	148	137	87	93
OK	340	330	330	97	100
SD	225	225	225	100	100
TX	2,880	2,820	2,810	98	100
WA	152	153	160	105	105
Oth Sts	355	355	345	97	97
US	11,684	11,228	11,152	95	99

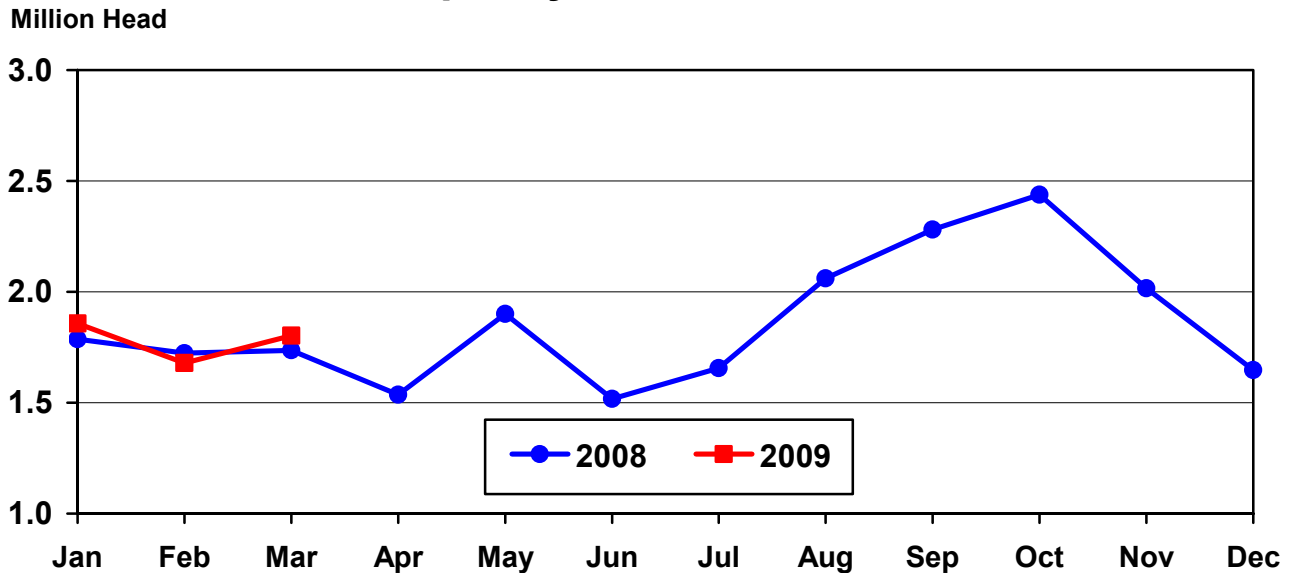
**United States Cattle on Feed  
1,000+ Capacity Feedlots**



**Cattle on Feed: Number Placed on Feed, 1,000+ Capacity Feedlots,  
by Month, State, and United States 2008-2009**

State	During Mar 2008	During Feb 2009	During Mar 2009		
			Number	as % of 2008	as % of Feb
	<i>1,000 Head</i>	<i>1,000 Head</i>	<i>1,000 Head</i>	<i>Percent</i>	<i>Percent</i>
AZ	30	26	24	80	92
CA	55	36	48	87	133
CO	135	190	165	122	87
ID	37	38	26	70	68
IA	59	62	71	120	115
KS	440	420	395	90	94
NE	360	310	360	100	116
NM	10	9	10	100	111
OK	50	51	68	136	133
SD	32	43	46	144	107
TX	450	430	510	113	119
WA	30	28	35	117	125
Oth Sts	48	35	44	92	126
US	1,736	1,678	1,802	104	107

**United States Cattle on Feed  
1,000+ Capacity Feedlots Number Placed**



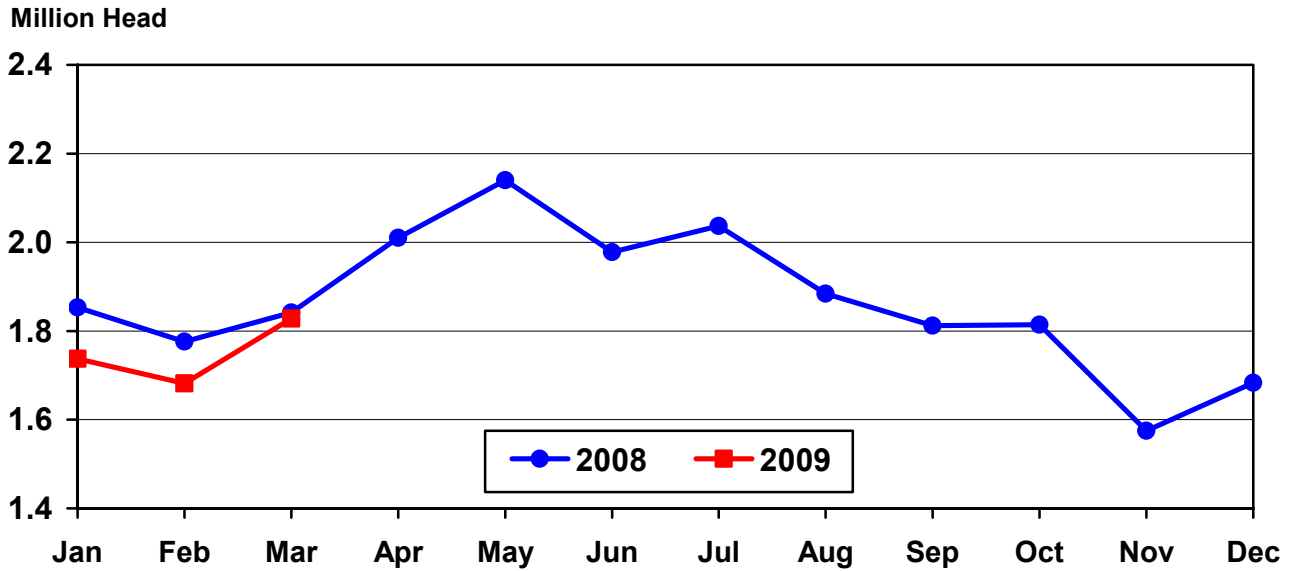
**Cattle on Feed: Number Placed on Feed by Weight Group, 1,000+ Capacity  
Feedlots, by Month, State, and United States, 2008-2009**

State	During March									
	Under 600		600-699		700-799		800 Plus		Total	
	2008	2009	2008	2009	2008	2009	2008	2009	2008	2009
	<i>1,000 Head</i>	<i>1,000 Head</i>	<i>1,000 Head</i>	<i>1,000 Head</i>	<i>1,000 Head</i>	<i>1,000 Head</i>	<i>1,000 Head</i>	<i>1,000 Head</i>	<i>1,000 Head</i>	<i>1,000 Head</i>
CO	20	20	25	25	45	55	45	65	135	165
KS	55	45	95	85	150	135	140	130	440	395
NE	50	40	50	60	110	110	150	150	360	360
TX	100	90	105	110	165	200	80	110	450	510
Oth Sts	110	105	55	60	91	92	95	115	351	372
US	335	300	330	340	561	592	510	570	1,736	1,802
State	During February									
	Under 600		600-699		700-799		800 Plus		Total	
	2008	2009	2008	2009	2008	2009	2008	2009	2008	2009
	<i>1,000 Head</i>	<i>1,000 Head</i>	<i>1,000 Head</i>	<i>1,000 Head</i>	<i>1,000 Head</i>	<i>1,000 Head</i>	<i>1,000 Head</i>	<i>1,000 Head</i>	<i>1,000 Head</i>	<i>1,000 Head</i>
CO	10	20	35	45	50	55	60	70	155	190
KS	40	50	85	95	160	165	105	110	390	420
NE	40	50	70	60	110	100	130	100	350	310
TX	120	100	125	115	125	140	70	75	440	430
Oth Sts	120	100	70	70	88	78	110	80	388	328
US	330	320	385	385	533	538	475	435	1,723	1,678

**Cattle on Feed: Number Marketed, 1,000+ Capacity Feedlots,  
by Month, State, and United States 2008-2009**

State	During Mar 2008	During Feb 2009	During Mar 2009		
			Number	as % of 2008	as % of Feb
	<i>1,000 Head</i>	<i>1,000 Head</i>	<i>1,000 Head</i>	<i>Percent</i>	<i>Percent</i>
AZ	31	32	35	113	109
CA	65	54	60	92	111
CO	160	165	155	97	94
ID	39	37	30	77	81
IA	68	61	70	103	115
KS	415	375	395	95	105
NE	390	370	365	94	99
NM	11	18	19	173	106
OK	58	49	66	114	135
SD	37	39	44	119	113
TX	480	410	510	106	124
WA	28	25	27	96	108
Oth Sts	60	47	52	87	111
US	1,842	1,682	1,828	99	109

## United States Cattle on Feed 1,000+ Capacity Feedlots Number Marketed



**Cattle on Feed: Other Disappearance, 1,000+ Capacity Feedlots,  
by Month, State, and United States 2008-2009**

State	During Mar 2008	During Feb 2009	During Mar 2009		
			Number	as % of 2008	as % of Feb
	<i>1,000 Head</i>	<i>1,000 Head</i>	<i>1,000 Head</i>	<i>Percent</i>	<i>Percent</i>
AZ	2	1	1	50	100
CA	5	2	3	60	150
CO	5	5	10	200	200
ID	3	1	1	33	100
IA	1	1	1	100	100
KS	15	15	10	67	67
NE	10	10	5	50	50
NM	1	1	2	200	200
OK	2	2	2	100	100
SD	5	4	2	40	50
TX	10	10	10	100	100
WA	1	1	1	100	100
Oth Sts	3	3	2	67	67
US	63	56	50	79	89

**Cattle on Feed: Number on Feed by Class, 1,000+ Capacity Feedlots,  
by Quarter, State, and United States, 2008-2009**

State	Steers & Steer Calves			Heifers & Heifer Calves			Cows and Bulls		
	Apr 1, 2008	Jan 1, 2009	Apr 1, 2009	Apr 1, 2008	Jan 1, 2009	Apr 1, 2009	Apr 1, 2008	Jan 1, 2009	Apr 1, 2009
	<i>1,000 Head</i>	<i>1,000 Head</i>	<i>1,000 Head</i>	<i>1,000 Head</i>	<i>1,000 Head</i>	<i>1,000 Head</i>	<i>1,000 Head</i>	<i>1,000 Head</i>	<i>1,000 Head</i>
AZ	371	357	329	3	1	1	0	0	0
CA	485	440	400	45	50	45	0	0	0
CO	600	610	670	415	385	365	5	5	5
ID	132	118	103	96	97	97	2	5	10
IA	380	345	375	170	155	145	0	0	0
KS	1,270	1,210	1,190	1,130	1,045	1,085	20	15	5
NE	1,550	1,460	1,400	890	900	910	10	10	10
NM	94	89	72	64	75	65	0	0	0
OK	220	215	190	120	120	140	0	0	0
SD	121	107	125	86	92	85	18	21	15
TX	1,790	1,770	1,780	1,087	1,018	1,028	3	2	2
WA	74	95	90	77	61	69	1	1	1
Oth Sts	260	255	255	93	101	87	2	4	3
US	7,347	7,071	6,979	4,276	4,100	4,122	61	63	51

## Terms and Definitions of Cattle on Feed Estimates

**Cattle on feed** are animals being fed a ration of grain, silage, hay and/or protein supplement for slaughter market that are expected to produce a carcass that will grade select or better. It excludes cattle being "backgrounded only" for later sale as feeders or later placement in another feedlot.

**Placements** are cattle put into a feedlot, fed a ration which will produce a carcass that will grade select or better, and are intended for the slaughter market.

**Marketings** are cattle shipped out of feedlots to a slaughter market.

**Other disappearance** includes death loss, movement from feedlots to pasture, and shipments to other feedlots for further feeding.

## Reliability of Cattle on Feed Estimates

**Survey Procedures:** During January and July all known feedlots in the U.S. with capacity of 1,000 or more head are surveyed to provide data for cattle on feed estimates. During the other months, all known feedlots from 17 States are surveyed. The 17 States account for 98 percent of the cattle on feed in feedlots with capacity of 1,000 or more head.

**Estimating Procedures:** These cattle on feed estimates were prepared by the Agricultural Statistics Board after reviewing recommendations and analysis submitted by each State office. Regional and State survey data were reviewed for reasonableness with each other and with estimates from the previous month when setting the current estimates.

**Revision Policy:** Revisions to previous estimates are made to improve month to month relationships. Estimates for the previous month are subject to revision in all States each month when current estimates are made. In February, all monthly estimates for the previous year, and the number of feedlots and annual marketings from two years ago are reviewed and subject to revisions. The reviews are primarily based on slaughter data, state check-off or brand data, and any other data that may have been received after the original estimate was made. Estimates will also be reviewed after data from the Census of Agriculture are available. No revisions will be made after that date and estimates become final.

**Reliability:** Since all 1,000+ capacity cattle on feed operators in every State are not included in the monthly survey, survey estimates are subject to sampling variability. Survey results are also subject to non-sampling errors such as omissions, duplications, and mistakes in reporting, recording, and processing the data. The effects of these errors cannot be measured directly. They are minimized through rigid quality controls in the data collection process and through a careful review of all reported data for consistency and reasonableness.

To assist users in evaluating the reliability of estimates in this report, the "**Root Mean Square Error**" is shown for selected items in the following table. The "Root Mean Square Error" is a statistical measure based on past performance and is computed using the differences between first and latest estimates. The "Root Mean Square Error" for cattle on feed inventory estimates over the past 24 months is less than 0.1 percent (0.04). This means that chances are 2 out of 3 that the final estimate will not be above or below the current estimate of 11.2 million head by more than 0.04 percent. Chances are 9 out of 10 that the difference will not exceed 0.1 percent.



The following table also shows a 24 month record of the range of differences between first and latest estimates for selected items. Using estimates of number on feed as an example, changes between the first estimate and the latest estimate during the past 24 months have averaged 1,000 head, ranging from 0 to 18,000 head. During this period the initial estimate has been above the final estimate 1 time and has been below the final estimate 4 times. This does not imply that the initial estimate is likely to understate or overstate final inventory.

**Reliability of Monthly Cattle on Feed Estimates <sup>1</sup>**

Item	Root Mean Square Error	90% Confidence Level		Difference Between First and Final Estimates			Number of Months	
		Percent	(000) Head	Average	Smallest	Largest	First Above Final	First Below Final
	<i>Percent</i>	<i>Percent</i>	<i>1,000 Head</i>	<i>1,000 Head</i>	<i>1,000 Head</i>	<i>1,000 Head</i>	<i>Number</i>	<i>Number</i>
Number on Feed	0.0	0.1	11.2	1	0	18	1	4
Placements	0.2	0.3	5.4	2	0	10	4	5
Marketings	0.2	0.3	5.5	2	0	10	5	2

<sup>1</sup> Based on data for the past 24 months.

### Information Contacts

Listed below are the commodity specialists in the Livestock Branch of the National Agricultural Statistics Service to contact for additional information.

Dan Kerestes, Chief, Livestock Branch ..... (202) 720-3570

#### Livestock Section

Scott Hollis, Head, Livestock Section ..... (202) 690-2424  
 Jim Collom - Dairy Products ..... (202) 690-3236  
 Joe Gaynor - Dairy Products Prices ..... (202) 690-2168  
 Jason Hardegree - Cattle, Cattle on Feed ..... (202) 720-3040  
 Sherry Bertramsen - Livestock Slaughter ..... (515) 284-4340  
 Everett Olbert - Sheep and Goats ..... (202) 720-4751  
 Mike Miller - Milk Production and Milk Cows ..... (202) 720-3278  
 Nick Streff - Hogs and Pigs ..... (202) 720-3106

## ACCESS TO REPORTS!!

---

For your convenience, there are several ways to obtain NASS reports, data products, and services:

### INTERNET ACCESS

All NASS reports are available free of charge. For free access, connect to the Internet and go to the NASS Home Page at: **www.nass.usda.gov**.

### E-MAIL SUBSCRIPTION

All NASS reports are available by subscription free of charge direct to your e-mail address. Starting with the NASS Home Page at **www.nass.usda.gov**, under the right navigation, *Receive reports by Email*, click on **National** or **State**. Follow the instructions on the screen.

-----

### PRINTED REPORTS OR DATA PRODUCTS

**CALL OUR TOLL-FREE ORDER DESK: 800-999-6779 (U.S. and Canada)**  
**Other areas, please call 703-605-6220      FAX: 703-605-6900**  
**(Visa, MasterCard, check, or money order acceptable for payment.)**

-----

### ASSISTANCE

For **assistance** with general agricultural statistics or further information about NASS or its products or services, contact the **Agricultural Statistics Hotline** at **800-727-9540**, 7:30 a.m. to 4:00 p.m. ET, or e-mail: **nass@nass.usda.gov**.

The U.S. Department of Agriculture (USDA) prohibits discrimination in all its programs and activities on the basis of race, color, national origin, age, disability, and where applicable, sex, marital status, familial status, parental status, religion, sexual orientation, genetic information, political beliefs, reprisal, or because all or a part of an individual's income is derived from any public assistance program. (Not all prohibited bases apply to all programs.) Persons with disabilities who require alternative means for communication of program information (Braille, large print, audiotape, etc.) should contact USDA's TARGET Center at (202) 720-2600 (voice and TDD).

To file a complaint of discrimination, write to USDA, Director, Office of Civil Rights, 1400 Independence Avenue, S.W., Washington, D.C. 20250-9410, or call (800) 795-3272 (voice) or (202) 720-6382 (TDD). USDA is an equal opportunity provider and employer.