



Cattle on Feed

Released May 22, 2009, by the National Agricultural Statistics Service (NASS), Agricultural Statistics Board, U.S. Department of Agriculture. For information on *Cattle on Feed* call Jason Hardegree at (202) 720-3040, office hours 7:30 a.m. to 4:00 p.m. ET.

U.S. Cattle on Feed Down 3 Percent

Cattle and calves on feed for slaughter market in the United States for feedlots with capacity of 1,000 or more head totaled 10.8 million head on May 1, 2009. The inventory was 3 percent below May 1, 2008.

Placements in feedlots during April totaled 1.60 million, 4 percent above 2008. Net placements were 1.53 million head. During April, placements of cattle and calves weighing less than 600 pounds were 355,000, 600-699 pounds were 315,000, 700-799 pounds were 405,000, and 800 pounds and greater were 525,000.

Marketings of fed cattle during April totaled 1.87 million, 7 percent below 2008.

Other disappearance totaled 69,000 during April, 8 percent below 2008. This is the second lowest other disappearance for the month of April since the series began in 1996.

**Cattle on Feed: Number on Feed, Placements, Marketings, and
Other Disappearance, 1,000+ Capacity Feedlots,
United States, May 1, 2008-2009**

Item	Number		2009 as %
	2008	2009	of 2008
	<i>1,000 Head</i>	<i>1,000 Head</i>	<i>Percent</i>
On Feed Apr 1	11,684	*11,162	96
Placed on Feed During Apr	1,536	1,600	104
Fed Cattle Marketed During Apr	2,010	1,871	93
Other Disappearance During Apr	75	69	92
On Feed May 1	11,135	10,822	97

* Revised.

**Cattle on Feed: Number on Feed, Placements, Marketings, and
Other Disappearance, 1,000+ Capacity Feedlots,
United States, April 1, 2008-2009**

Item	Number		2009 as %
	2008	2009	of 2008
	<i>1,000 Head</i>	<i>1,000 Head</i>	<i>Percent</i>
On Feed Mar 1	11,853	11,228	95
Placed on Feed During Mar	1,736	*1,808	104
Fed Cattle Marketed During Mar	1,842	*1,824	99
Other Disappearance During Mar	63	50	79
On Feed Apr 1	11,684	*11,162	96

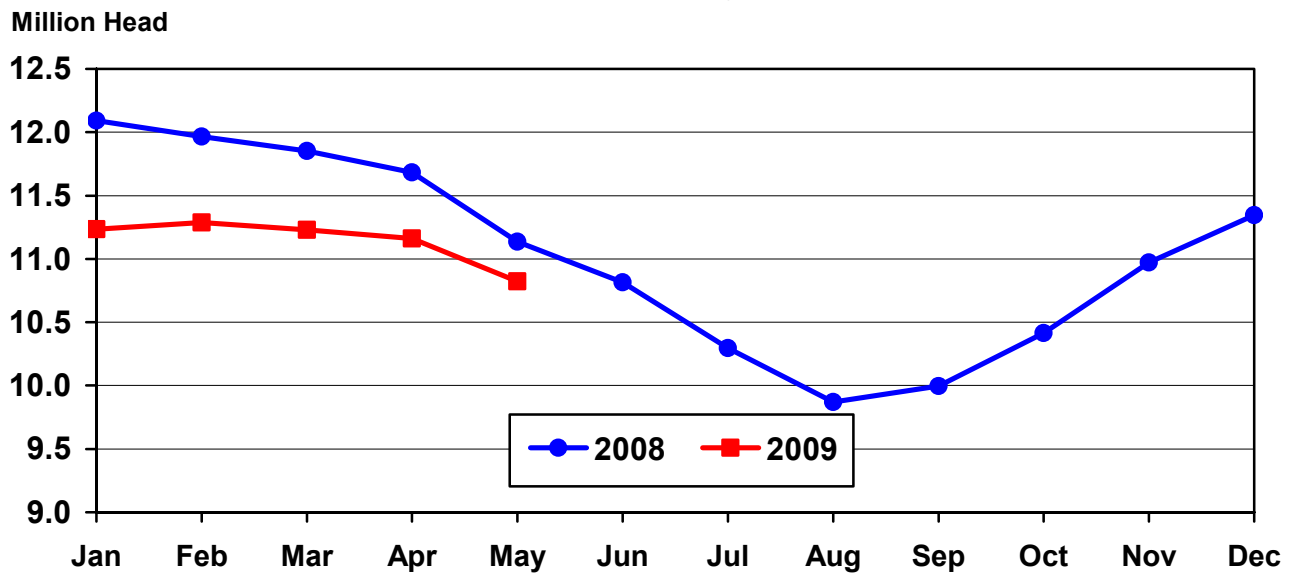
* Revised.

**Cattle on Feed: Number on Feed, 1,000+ Capacity Feedlots,
by Month, State, and United States 2008-2009**

State	May 1, 2008	Apr 1, 2009	May 1, 2009		
			Number	as % of 2008	as % of Apr
	<i>1,000 Head</i>	<i>1,000 Head</i>	<i>1,000 Head</i>	<i>Percent</i>	<i>Percent</i>
AZ	370	330	311	84	94
CA	520	445	450	87	101
CO	950	1,040	1,010	106	97
ID	225	210	210	93	100
IA	530	*530	540	102	102
KS	2,290	2,280	2,180	95	96
NE	2,380	2,320	2,270	95	98
NM	150	137	120	80	88
OK	305	330	315	103	95
SD	220	225	230	105	102
TX	2,690	2,810	2,680	100	95
WA	155	160	161	104	101
Oth Sts	350	345	345	99	100
US	11,135	*11,162	10,822	97	97

*Revised.

**United States Cattle on Feed
1,000+ Capacity Feedlots**



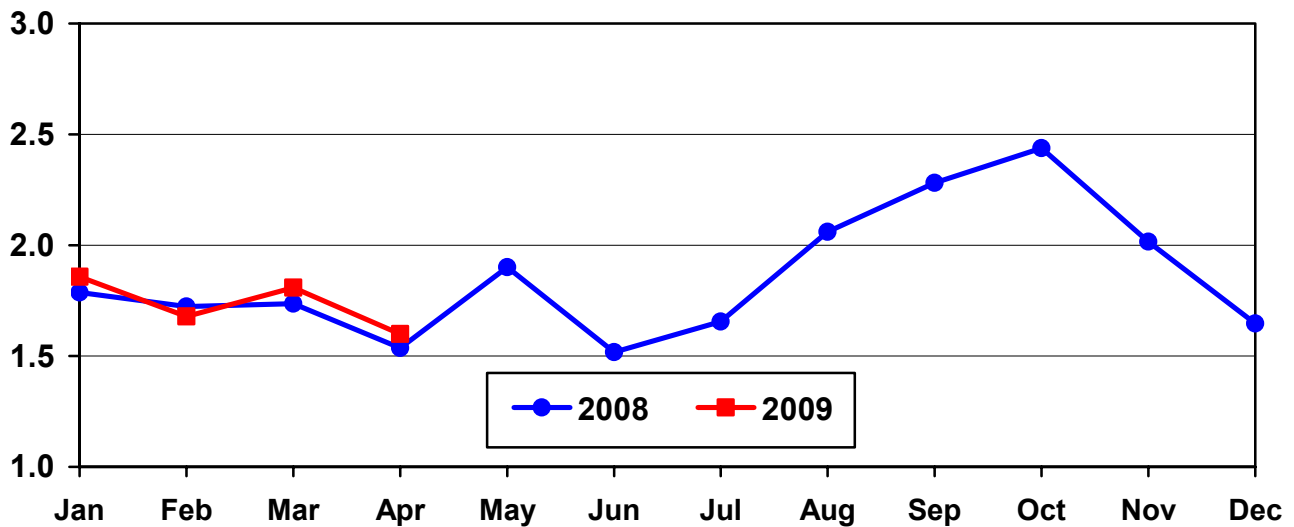
**Cattle on Feed: Number Placed on Feed, 1,000+ Capacity Feedlots,
by Month, State, and United States 2008-2009**

State	During Apr 2008	During Mar 2009	During Apr 2009		
			Number	as % of 2008	as % of Mar
	<i>1,000 Head</i>	<i>1,000 Head</i>	<i>1,000 Head</i>	<i>Percent</i>	<i>Percent</i>
AZ	34	24	21	62	88
CA	64	48	68	106	142
CO	115	165	150	130	91
ID	28	26	30	107	115
IA	59	*77	79	134	103
KS	360	395	330	92	84
NE	340	360	350	103	97
NM	9	10	11	122	110
OK	40	68	52	130	76
SD	33	46	39	118	85
TX	360	510	395	110	77
WA	33	35	26	79	74
Oth Sts	61	44	49	80	111
US	1,536	*1,808	1,600	104	88

*Revised.

**United States Cattle on Feed
1,000+ Capacity Feedlots Number Placed**

Million Head



**Cattle on Feed: Number Placed on Feed by Weight Group, 1,000+ Capacity
Feedlots, by Month, State, and United States, 2008-2009**

State	During April									
	Under 600		600-699		700-799		800 Plus		Total	
	2008	2009	2008	2009	2008	2009	2008	2009	2008	2009
	<i>1,000 Head</i>	<i>1,000 Head</i>	<i>1,000 Head</i>	<i>1,000 Head</i>	<i>1,000 Head</i>	<i>1,000 Head</i>	<i>1,000 Head</i>	<i>1,000 Head</i>	<i>1,000 Head</i>	<i>1,000 Head</i>
CO	15	20	25	30	35	40	40	60	115	150
KS	45	55	70	70	115	90	130	115	360	330
NE	50	55	60	65	90	90	140	140	340	350
TX	90	125	80	90	110	95	80	85	360	395
Oth Sts	115	100	43	60	78	90	125	125	361	375
US	315	355	278	315	428	405	515	525	1,536	1,600
	During March									
	Under 600		600-699		700-799		800 Plus		Total	
	2008	2009	2008	2009	2008	2009	2008	2009	2008	2009
	<i>1,000 Head</i>	<i>1,000 Head</i>	<i>1,000 Head</i>	<i>1,000 Head</i>	<i>1,000 Head</i>	<i>1,000 Head</i>	<i>1,000 Head</i>	<i>1,000 Head</i>	<i>1,000 Head</i>	<i>1,000 Head</i>
CO	20	20	25	25	45	55	45	65	135	165
KS	55	45	95	85	150	135	140	130	440	395
NE	50	40	50	60	110	110	150	150	360	360
TX	100	90	105	110	165	200	80	110	450	510
Oth Sts	110	*110	55	60	91	*93	95	115	351	*378
US	335	*305	330	340	561	*593	510	570	1,736	*1,808

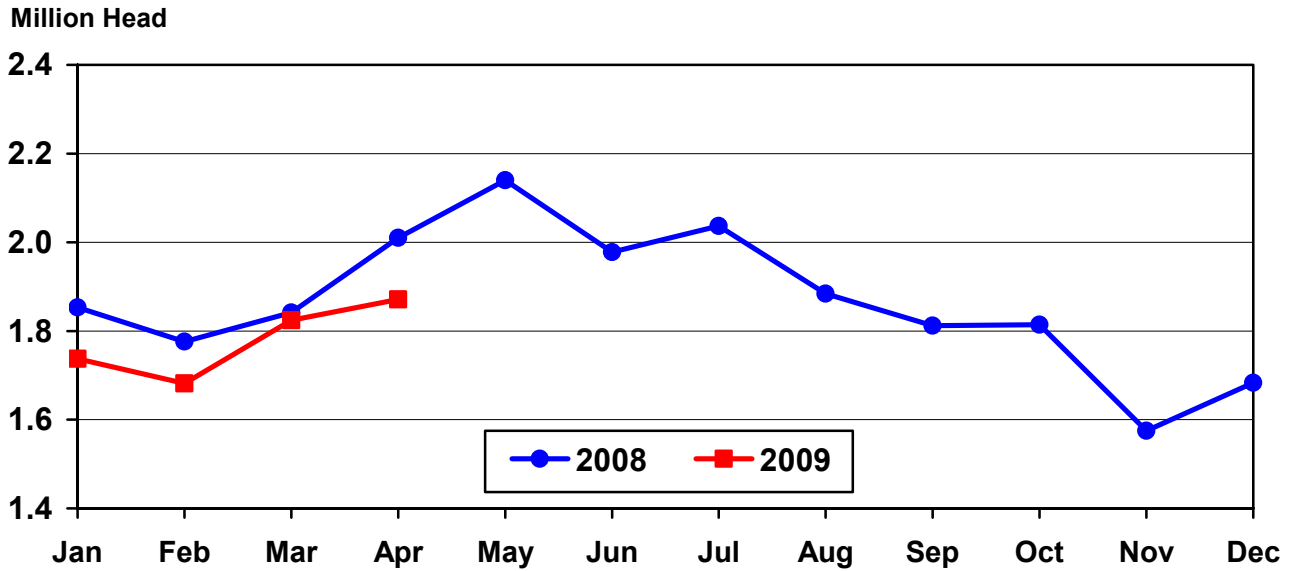
* Revised.

**Cattle on Feed: Number Marketed, 1,000+ Capacity Feedlots,
by Month, State, and United States 2008-2009**

State	During Apr 2008	During Mar 2009	During Apr 2009		
			Number	as % of 2008	as % of Mar
	<i>1,000 Head</i>	<i>1,000 Head</i>	<i>1,000 Head</i>	<i>Percent</i>	<i>Percent</i>
AZ	37	35	38	103	109
CA	70	60	61	87	102
CO	165	155	165	100	106
ID	32	30	29	91	97
IA	77	*66	68	88	103
KS	470	395	410	87	104
NE	400	365	395	99	108
NM	16	19	25	156	132
OK	74	66	66	89	100
SD	37	44	33	89	75
TX	540	510	510	94	100
WA	29	27	24	83	89
Oth Sts	63	52	47	75	90
US	2,010	*1,824	1,871	93	103

* Revised.

United States Cattle on Feed 1,000+ Capacity Feedlots Number Marketed



**Cattle on Feed: Other Disappearance, 1,000+ Capacity Feedlots,
by Month, State, and United States 2008-2009**

State	During Apr 2008	During Mar 2009	During Apr 2009		
			Number	as % of 2008	as % of Mar
	<i>1,000 Head</i>	<i>1,000 Head</i>	<i>1,000 Head</i>	<i>Percent</i>	<i>Percent</i>
AZ	1	1	2	200	200
CA	4	3	2	50	67
CO	20	10	15	75	150
ID	1	1	1	100	100
IA	2	1	1	50	100
KS	20	10	20	100	200
NE	10	5	5	50	100
NM	1	2	3	300	150
OK	1	2	1	100	50
SD	1	2	1	100	50
TX	10	10	15	150	150
WA	1	1	1	100	100
Oth Sts	3	2	2	67	100
US	75	50	69	92	138

Terms and Definitions of Cattle on Feed Estimates

Cattle on feed are animals being fed a ration of grain, silage, hay and/or protein supplement for slaughter market that are expected to produce a carcass that will grade select or better. It excludes cattle being "backgrounded only" for later sale as feeders or later placement in another feedlot.

Placements are cattle put into a feedlot, fed a ration which will produce a carcass that will grade select or better, and are intended for the slaughter market.

Marketings are cattle shipped out of feedlots to a slaughter market.

Other disappearance includes death loss, movement from feedlots to pasture, and shipments to other feedlots for further feeding.

Reliability of Cattle on Feed Estimates

Survey Procedures: During January and July all known feedlots in the U.S. with capacity of 1,000 or more head are surveyed to provide data for cattle on feed estimates. During the other months, all known feedlots from 16 States are surveyed. The 16 States account for 98 percent of the cattle on feed in feedlots with capacity of 1,000 or more head.

Estimating Procedures: These cattle on feed estimates were prepared by the Agricultural Statistics Board after reviewing recommendations and analysis submitted by each State office. Regional and State survey data were reviewed for reasonableness with each other and with estimates from the previous month when setting the current estimates.

Revision Policy: Revisions to previous estimates are made to improve month to month relationships. Estimates for the previous month are subject to revision in all States each month when current estimates are made. In February, all monthly estimates for the previous year, and the number of feedlots and annual marketings from two years ago are reviewed and subject to revisions. The reviews are primarily based on slaughter data, state check-off or brand data, and any other data that may have been received after the original estimate was made. Estimates will also be reviewed after data from the Census of Agriculture are available. No revisions will be made after that date and estimates become final.

Reliability: Since all 1,000+ capacity cattle on feed operators in every State are not included in the monthly survey, survey estimates are subject to sampling variability. Survey results are also subject to non-sampling errors such as omissions, duplications, and mistakes in reporting, recording, and processing the data. The effects of these errors cannot be measured directly. They are minimized through rigid quality controls in the data collection process and through a careful review of all reported data for consistency and reasonableness.

To assist users in evaluating the reliability of estimates in this report, the "**Root Mean Square Error**" is shown for selected items in the following table. The "Root Mean Square Error" is a statistical measure based on past performance and is computed using the differences between first and latest estimates. The "Root Mean Square Error" for cattle on feed inventory estimates over the past 24 months is less than 0.1 percent (0.04). This means that chances are 2 out of 3 that the final estimate will not be above or below the current estimate of 10.8 million head by more than 0.04 percent. Chances are 9 out of 10 that the difference will not exceed 0.1 percent.

The following table also shows a 24 month record of the range of differences between first and latest estimates for selected items. Using estimates of number on feed as an example, changes between the first estimate and the latest estimate during the past 24 months have averaged 2,000 head, ranging from 0 to 18,000 head. During this period the initial estimate has been above the final estimate 1 time and has been below the final estimate 5 times. This does not imply that the initial estimate is likely to understate or overstate final inventory.

Reliability of Monthly Cattle on Feed Estimates ¹

Item	Root Mean Square Error	90% Confidence Level		Difference Between First and Final Estimates			Number of Months	
		Percent	(000) Head	Average	Smallest	Largest	First Above Final	First Below Final
	<i>Percent</i>	<i>Percent</i>	<i>1,000 Head</i>	<i>1,000 Head</i>	<i>1,000 Head</i>	<i>1,000 Head</i>	<i>Number</i>	<i>Number</i>
Number on Feed	0.0	0.1	10.8	2	0	18	1	5
Placements	0.2	0.3	4.8	2	0	10	3	6
Marketings	0.2	0.3	5.6	2	0	10	5	2

¹ Based on data for the past 24 months.

Information Contacts

Listed below are the commodity specialists in the Livestock Branch of the National Agricultural Statistics Service to contact for additional information.

Dan Kerestes, Chief, Livestock Branch (202) 720-3570

Livestock Section

Scott Hollis, Head, Livestock Section (202) 690-2424
 Jim Collom - Dairy Products (202) 690-3236
 Joe Gaynor - Dairy Products Prices (202) 690-2168
 Jason Hardegree - Cattle, Cattle on Feed (202) 720-3040
 Sherry Bertramsen - Livestock Slaughter (515) 284-4340
 Everett Olbert - Sheep and Goats (202) 720-4751
 Mike Miller - Milk Production and Milk Cows (202) 720-3278
 Nick Streff - Hogs and Pigs (202) 720-3106

ACCESS TO REPORTS!!

For your convenience, there are several ways to obtain NASS reports, data products, and services:

INTERNET ACCESS

All NASS reports are available free of charge. For free access, connect to the Internet and go to the NASS Home Page at: **www.nass.usda.gov**.

E-MAIL SUBSCRIPTION

All NASS reports are available by subscription free of charge direct to your e-mail address. Starting with the NASS Home Page at **www.nass.usda.gov**, under the right navigation, *Receive reports by Email*, click on **National** or **State**. Follow the instructions on the screen.

PRINTED REPORTS OR DATA PRODUCTS

CALL OUR TOLL-FREE ORDER DESK: 800-999-6779 (U.S. and Canada)
Other areas, please call 703-605-6220 FAX: 703-605-6900
(Visa, MasterCard, check, or money order acceptable for payment.)

ASSISTANCE

For **assistance** with general agricultural statistics or further information about NASS or its products or services, contact the **Agricultural Statistics Hotline** at **800-727-9540**, 7:30 a.m. to 4:00 p.m. ET, or e-mail: **nass@nass.usda.gov**.

The U.S. Department of Agriculture (USDA) prohibits discrimination in all its programs and activities on the basis of race, color, national origin, age, disability, and where applicable, sex, marital status, familial status, parental status, religion, sexual orientation, genetic information, political beliefs, reprisal, or because all or a part of an individual's income is derived from any public assistance program. (Not all prohibited bases apply to all programs.) Persons with disabilities who require alternative means for communication of program information (Braille, large print, audiotape, etc.) should contact USDA's TARGET Center at (202) 720-2600 (voice and TDD).

To file a complaint of discrimination, write to USDA, Director, Office of Civil Rights, 1400 Independence Avenue, S.W., Washington, D.C. 20250-9410, or call (800) 795-3272 (voice) or (202) 720-6382 (TDD). USDA is an equal opportunity provider and employer.