



Cattle on Feed

Released June 19, 2009, by the National Agricultural Statistics Service (NASS), Agricultural Statistics Board, U.S. Department of Agriculture. For information on *Cattle on Feed* call Jason Hardegree at (202) 720-3040, office hours 7:30 a.m. to 4:00 p.m. ET.

U.S. Cattle on Feed Down 4 Percent

Cattle and calves on feed for slaughter market in the United States for feedlots with capacity of 1,000 or more head totaled 10.4 million head on June 1, 2009. The inventory was 4 percent below June 1, 2008.

Placements in feedlots during May totaled 1.64 million, 14 percent below 2008. Net placements were 1.54 million head. This is the second lowest placements for the month of May since the series began in 1996. During May, placements of cattle and calves weighing less than 600 pounds were 395,000, 600-699 pounds were 305,000, 700-799 pounds were 433,000, and 800 pounds and greater were 505,000.

Marketings of fed cattle during May totaled 1.95 million, 9 percent below 2008. This is the lowest fed cattle marketings for the month of May since the series began in 1996.

Other disappearance totaled 101,000 during May, 26 percent above 2008.

**Cattle on Feed: Number on Feed, Placements, Marketings, and
Other Disappearance, 1,000+ Capacity Feedlots,
United States, June 1, 2008-2009**

Item	Number		2009 as %
	2008	2009	of 2008
	<i>1,000 Head</i>	<i>1,000 Head</i>	<i>Percent</i>
On Feed May 1	11,135	10,822	97
Placed on Feed During May	1,900	1,638	86
Fed Cattle Marketed During May	2,140	1,952	91
Other Disappearance During May	80	101	126
On Feed Jun 1	10,815	10,407	96

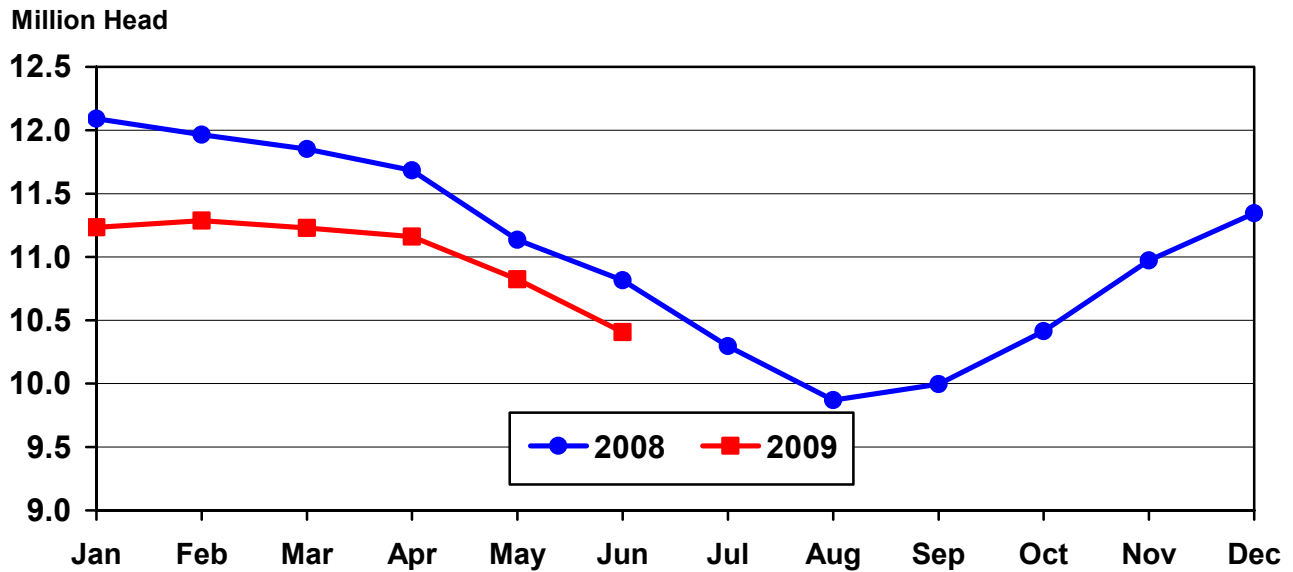
**Cattle on Feed: Number on Feed, Placements, Marketings, and
Other Disappearance, 1,000+ Capacity Feedlots,
United States, May 1, 2008-2009**

Item	Number		2009 as %
	2008	2009	of 2008
	<i>1,000 Head</i>	<i>1,000 Head</i>	<i>Percent</i>
On Feed Apr 1	11,684	11,162	96
Placed on Feed During Apr	1,536	1,600	104
Fed Cattle Marketed During Apr	2,010	1,871	93
Other Disappearance During Apr	75	69	92
On Feed May 1	11,135	10,822	97

**Cattle on Feed: Number on Feed, 1,000+ Capacity Feedlots,
by Month, State, and United States 2008-2009**

State	Jun 1, 2008	May 1, 2009	Jun 1, 2009		
			Number	as % of 2008	as % of May
	<i>1,000 Head</i>	<i>1,000 Head</i>	<i>1,000 Head</i>	<i>Percent</i>	<i>Percent</i>
AZ	365	311	301	82	97
CA	525	450	470	90	104
CO	920	1,010	980	107	97
ID	215	210	205	95	98
IA	520	540	530	102	98
KS	2,190	2,180	2,080	95	95
NE	2,250	2,270	2,110	94	93
NM	150	120	105	70	88
OK	305	315	310	102	98
SD	205	230	220	107	96
TX	2,690	2,680	2,610	97	97
WA	145	161	156	108	97
Oth Sts	335	345	330	99	96
US	10,815	10,822	10,407	96	96

**United States Cattle on Feed
1,000+ Capacity Feedlots**

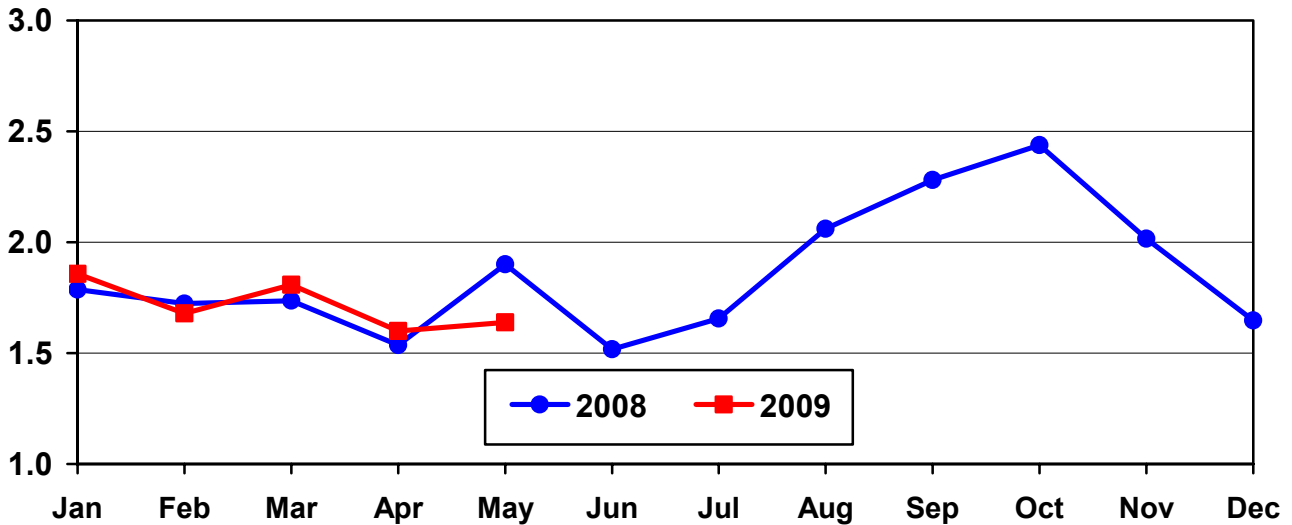


**Cattle on Feed: Number Placed on Feed, 1,000+ Capacity Feedlots,
by Month, State, and United States 2008-2009**

State	During May 2008	During Apr 2009	During May 2009		
			Number	as % of 2008	as % of Apr
	<i>1,000 Head</i>	<i>1,000 Head</i>	<i>1,000 Head</i>	<i>Percent</i>	<i>Percent</i>
AZ	34	21	26	76	124
CA	80	68	74	93	109
CO	150	150	140	93	93
ID	28	30	35	125	117
IA	58	79	60	103	76
KS	410	330	345	84	105
NE	370	350	310	84	89
NM	24	11	16	67	145
OK	76	52	67	88	129
SD	34	39	40	118	103
TX	560	395	455	81	115
WA	29	26	31	107	119
Oth Sts	47	49	39	83	80
US	1,900	1,600	1,638	86	102

**United States Cattle on Feed
1,000+ Capacity Feedlots Number Placed**

Million Head



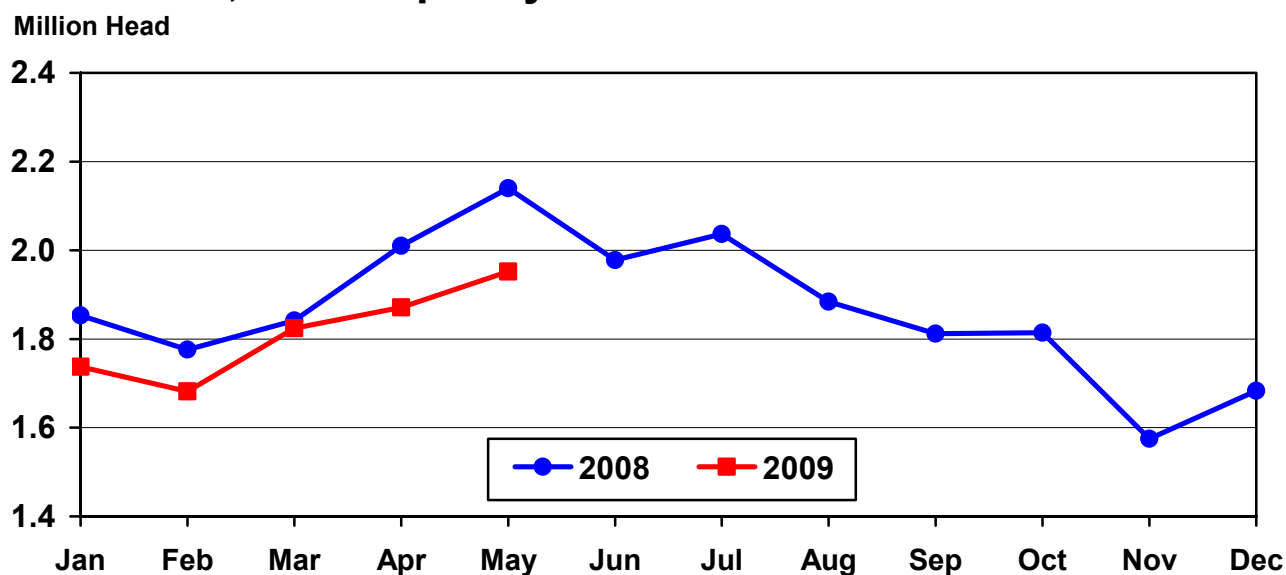
**Cattle on Feed: Number Placed on Feed by Weight Group, 1,000+ Capacity
Feedlots, by Month, State, and United States, 2008-2009**

State	During May									
	Under 600		600-699		700-799		800 Plus		Total	
	2008	2009	2008	2009	2008	2009	2008	2009	2008	2009
	<i>1,000 Head</i>	<i>1,000 Head</i>	<i>1,000 Head</i>	<i>1,000 Head</i>	<i>1,000 Head</i>	<i>1,000 Head</i>	<i>1,000 Head</i>	<i>1,000 Head</i>	<i>1,000 Head</i>	<i>1,000 Head</i>
CO	25	25	30	25	45	45	50	45	150	140
KS	50	65	70	70	130	110	160	100	410	345
NE	40	30	70	60	85	80	175	140	370	310
TX	105	170	125	100	210	110	120	75	560	455
Oth Sts	120	105	55	50	95	88	140	145	410	388
US	340	395	350	305	565	433	645	505	1,900	1,638
State	During April									
	Under 600		600-699		700-799		800 Plus		Total	
	2008	2009	2008	2009	2008	2009	2008	2009	2008	2009
	<i>1,000 Head</i>	<i>1,000 Head</i>	<i>1,000 Head</i>	<i>1,000 Head</i>	<i>1,000 Head</i>	<i>1,000 Head</i>	<i>1,000 Head</i>	<i>1,000 Head</i>	<i>1,000 Head</i>	<i>1,000 Head</i>
CO	15	20	25	30	35	40	40	60	115	150
KS	45	55	70	70	115	90	130	115	360	330
NE	50	55	60	65	90	90	140	140	340	350
TX	90	125	80	90	110	95	80	85	360	395
Oth Sts	115	100	43	60	78	90	125	125	361	375
US	315	355	278	315	428	405	515	525	1,536	1,600

**Cattle on Feed: Number Marketed, 1,000+ Capacity Feedlots,
by Month, State, and United States 2008-2009**

State	During May 2008	During Apr 2009	During May 2009		
			Number	as % of 2008	as % of Apr
	<i>1,000 Head</i>	<i>1,000 Head</i>	<i>1,000 Head</i>	<i>Percent</i>	<i>Percent</i>
AZ	38	38	35	92	92
CA	71	61	52	73	85
CO	170	165	145	85	88
ID	36	29	39	108	134
IA	65	68	68	105	100
KS	490	410	425	87	104
NE	480	395	450	94	114
NM	23	25	28	122	112
OK	75	66	71	95	108
SD	46	33	44	96	133
TX	550	510	510	93	100
WA	38	24	35	92	146
Oth Sts	58	47	50	86	106
US	2,140	1,871	1,952	91	104

United States Cattle on Feed 1,000+ Capacity Feedlots Number Marketed



**Cattle on Feed: Other Disappearance, 1,000+ Capacity Feedlots,
by Month, State, and United States 2008-2009**

State	During May 2008	During Apr 2009	During May 2009		
			Number	as % of 2008	as % of Apr
	<i>1,000 Head</i>	<i>1,000 Head</i>	<i>1,000 Head</i>	<i>Percent</i>	<i>Percent</i>
AZ	1	2	1	100	50
CA	4	2	2	50	100
CO	10	15	25	250	167
ID	2	1	1	50	100
IA	3	1	2	67	200
KS	20	20	20	100	100
NE	20	5	20	100	400
NM	1	3	3	300	100
OK	1	1	1	100	100
SD	3	1	6	200	600
TX	10	15	15	150	100
WA	1	1	1	100	100
Oth Sts	4	2	4	100	200
US	80	69	101	126	146

Terms and Definitions of Cattle on Feed Estimates

Cattle on feed are animals being fed a ration of grain, silage, hay and/or protein supplement for slaughter market that are expected to produce a carcass that will grade select or better. It excludes cattle being "backgrounded only" for later sale as feeders or later placement in another feedlot.

Placements are cattle put into a feedlot, fed a ration which will produce a carcass that will grade select or better, and are intended for the slaughter market.

Marketings are cattle shipped out of feedlots to a slaughter market.

Other disappearance includes death loss, movement from feedlots to pasture, and shipments to other feedlots for further feeding.

Reliability of Cattle on Feed Estimates

Survey Procedures: During January and July all known feedlots in the U.S. with capacity of 1,000 or more head are surveyed to provide data for cattle on feed estimates. During the other months, all known feedlots from 16 States are surveyed. The 16 States account for 98 percent of the cattle on feed in feedlots with capacity of 1,000 or more head.

Estimating Procedures: These cattle on feed estimates were prepared by the Agricultural Statistics Board after reviewing recommendations and analysis submitted by each State office. Regional and State survey data were reviewed for reasonableness with each other and with estimates from the previous month when setting the current estimates.

Revision Policy: Revisions to previous estimates are made to improve month to month relationships. Estimates for the previous month are subject to revision in all States each month when current estimates are made. In February, all monthly estimates for the previous year, and the number of feedlots and annual marketings from two years ago are reviewed and subject to revisions. The reviews are primarily based on slaughter data, state check-off or brand data, and any other data that may have been received after the original estimate was made. Estimates will also be reviewed after data from the Census of Agriculture are available. No revisions will be made after that date and estimates become final.

Reliability: Since all 1,000+ capacity cattle on feed operators in every State are not included in the monthly survey, survey estimates are subject to sampling variability. Survey results are also subject to non-sampling errors such as omissions, duplications, and mistakes in reporting, recording, and processing the data. The effects of these errors cannot be measured directly. They are minimized through rigid quality controls in the data collection process and through a careful review of all reported data for consistency and reasonableness.

To assist users in evaluating the reliability of estimates in this report, the "**Root Mean Square Error**" is shown for selected items in the following table. The "Root Mean Square Error" is a statistical measure based on past performance and is computed using the differences between first and latest estimates. The "Root Mean Square Error" for cattle on feed inventory estimates over the past 24 months is less than 0.1 percent (0.04). This means that chances are 2 out of 3 that the final estimate will not be above or below the current estimate of 10.4 million head by more than 0.04 percent. Chances are 9 out of 10 that the difference will not exceed 0.1 percent.

The following table also shows a 24 month record of the range of differences between first and latest estimates for selected items. Using estimates of number on feed as an example, changes between the first estimate and the latest estimate during the past 24 months have averaged 2,000 head, ranging from 0 to 18,000 head. During this period the initial estimate has been above the final estimate 1 time and has been below the final estimate 5 times. This does not imply that the initial estimate is likely to understate or overstate final inventory.

Reliability of Monthly Cattle on Feed Estimates ¹

Item	Root Mean Square Error	90% Confidence Level		Difference Between First and Final Estimates			Number of Months	
		Percent	(000) Head	Average	Smallest	Largest	First Above Final	First Below Final
	<i>Percent</i>	<i>Percent</i>	<i>1,000 Head</i>	<i>1,000 Head</i>	<i>1,000 Head</i>	<i>1,000 Head</i>	<i>Number</i>	<i>Number</i>
Number on Feed	0.0	0.1	10.4	2	0	18	1	5
Placements	0.2	0.3	4.9	2	0	10	2	6
Marketings	0.2	0.3	5.9	1	0	10	4	2

¹ Based on data for the past 24 months.

Information Contacts

Listed below are the commodity specialists in the Livestock Branch of the National Agricultural Statistics Service to contact for additional information.

Dan Kerestes, Chief, Livestock Branch (202) 720-3570

Livestock Section

Scott Hollis, Head, Livestock Section (202) 690-2424
 Jim Collom - Dairy Products (202) 690-3236
 Joe Gaynor - Dairy Products Prices (202) 690-2168
 Jason Hardegree - Cattle, Cattle on Feed (202) 720-3040
 Sherry Bertramsen - Livestock Slaughter (515) 284-4340
 Everett Olbert - Sheep and Goats (202) 720-4751
 Mike Miller - Milk Production and Milk Cows (202) 720-3278
 Nick Streff - Hogs and Pigs (202) 720-3106

ACCESS TO REPORTS!!

For your convenience, there are several ways to obtain NASS reports, data products, and services:

INTERNET ACCESS

All NASS reports are available free of charge. For free access, connect to the Internet and go to the NASS Home Page at: **www.nass.usda.gov**.

E-MAIL SUBSCRIPTION

All NASS reports are available by subscription free of charge direct to your e-mail address. Starting with the NASS Home Page at **www.nass.usda.gov**, under the right navigation, *Receive reports by Email*, click on **National** or **State**. Follow the instructions on the screen.

PRINTED REPORTS OR DATA PRODUCTS

CALL OUR TOLL-FREE ORDER DESK: 800-999-6779 (U.S. and Canada)
Other areas, please call 703-605-6220 FAX: 703-605-6900
(Visa, MasterCard, check, or money order acceptable for payment.)

ASSISTANCE

For **assistance** with general agricultural statistics or further information about NASS or its products or services, contact the **Agricultural Statistics Hotline** at **800-727-9540**, 7:30 a.m. to 4:00 p.m. ET, or e-mail: **nass@nass.usda.gov**.

The U.S. Department of Agriculture (USDA) prohibits discrimination in all its programs and activities on the basis of race, color, national origin, age, disability, and where applicable, sex, marital status, familial status, parental status, religion, sexual orientation, genetic information, political beliefs, reprisal, or because all or a part of an individual's income is derived from any public assistance program. (Not all prohibited bases apply to all programs.) Persons with disabilities who require alternative means for communication of program information (Braille, large print, audiotape, etc.) should contact USDA's TARGET Center at (202) 720-2600 (voice and TDD).

To file a complaint of discrimination, write to USDA, Director, Office of Civil Rights, 1400 Independence Avenue, S.W., Washington, D.C. 20250-9410, or call (800) 795-3272 (voice) or (202) 720-6382 (TDD). USDA is an equal opportunity provider and employer.